

Maternal and Child Health

“This program has as its major goal the provision of health services to mothers and children. Through assistance to States, localities, and nonprofit groups it directs primary attention to (a) reducing infant mortality and otherwise promoting the health of mothers and children, and (b) locating, diagnosing, and treating children who are suffering from crippling or handicapping illnesses.

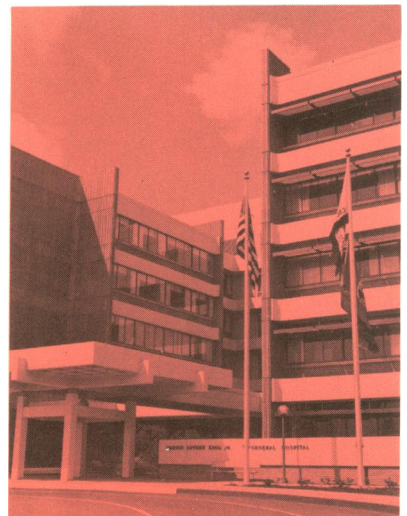
“Formula grants are made to States for maternal and child health services and crippled children’s services. In 1974, funds previously allocated for project grants will be folded into the State formula grants, and specified by the authorizing legislation.”

The legislation cited in the Budget is included in title V of the Social Security Act and provides that, with this transition, each State plan for maternal and child health service must incorporate a program of projects including Maternity and Infant Care, Comprehensive Health Services for Preschool and School Age Children, Dental Care, Intensive Care for Newborn Infants and Family Planning. All these special projects, with the exception of family planning, have been administered by the Maternal and Child Health Service.

A breakdown of funds projected for maternal and child health in FY 1974 shows \$153,051,000 for maternal and child health services (an increase of \$92,273,000 over the 1973 estimate); \$64,900,000 for services for crippled children (the same as in 1973); \$6,035,000 for research, and \$15,882,000 for training, the same as in the 1973 estimates), and \$4,340,000 in direct operations.

—Excerpted from President Nixon’s budget message to Congress, January 29, 1973.

The Martin Luther King, Jr. General Hospital, opened in April 1972, is the first public hospital located in the Watts section of Los Angeles. Before it was built, residents of south-central Los Angeles had to travel approximately 20 miles for care in a public hospital. Unique concepts of this hospital are that private community physicians are co-participants in patient care and training programs, and both public and private patients can be admitted. A report on recent conferences concerning the public hospital system begins on page 295.

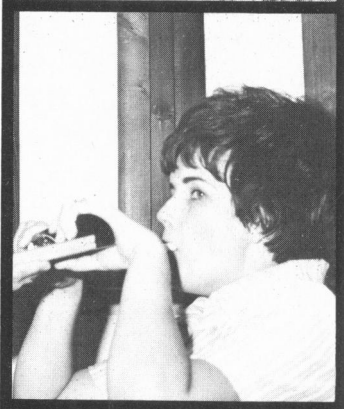
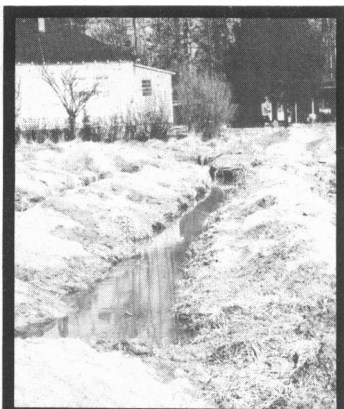


HEALTH SERVICES Reports

Formerly PUBLIC HEALTH REPORTS • Published Since 1878

APRIL 1973

VOL. 88, NO. 4



FEATURES

Page

Hypertension detection by dentists _____ 291

*Michael A. Guarino, Shirley M. Giovannoli, and
Charles L. Berman*

Public hospitals—critical or recovering? _____ 295

Alice Tetelman

A normative definition of the process of areawide health services planning _____ 305

John R. Moore, Jr.

Toward a brighter future for nursing homes _____ 316

John R. Kernodle

Spread of disease by fecal-oral route in day nurseries.
A modern health hazard _____ 320

*Stephen H. Gehlbach, J. Newton MacCormack,
Benjamin M. Drake, and William V. Thompson*

Soil pollution and environmental health _____ 323

*D. E. Pettry, R. B. Reneau, Jr., M. I. Shanholtz,
S. A. Graham, Jr., and C. W. Weston*

Team training. An experiment with promise _____ 328

R. W. Carlaw and L. B. Callan

Identifying integrated regions for health care delivery _____ 337

J. Dale Taliaferro and W. W. Remmers

U.S. Department of Health, Education, and Welfare

Caspar W. Weinberger, Secretary
Charles C. Edwards, MD, Acting
Assistant Secretary for Health

Health Services and Mental Health Administration

David J. Sencer, MD, Assistant Surgeon General, Acting Administrator

Health Services Reports

Managing Director, Gerald N. Kurtz,
Associate Administrator for
Communications and Public Affairs
Marian Priest Tebben, Editor
Esther C. Gould, Assistant Executive
Editor

Virginia M. Larson, Managing Editor
Eugene Fite, Art Director

Opinions expressed are the authors' and do not necessarily reflect the views of Health Services Reports or the Health Services and Mental Health Administration. Trade names are used for identification only and do not represent an endorsement by the Health Services and Mental Health Administration.

Address correspondence to:
Editor, Health Services Reports
Room 4A-54, Parklawn Building
5600 Fishers Lane
Rockville, Md. 20852
Telephone:
Area code 301-443-2525

323

371