

HSMHA funds screening for sickle cell disease

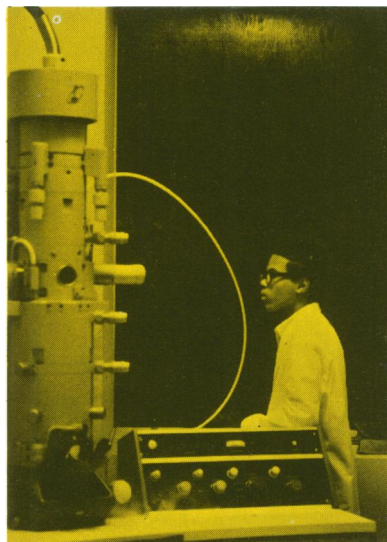
Approximately 300,000 to 400,000 persons will be screened for sickle cell disease by July 1973 in 19 screening and education clinics that were recently funded by the Health Services and Mental Health Administration. All screening is performed on a voluntary basis.

Contracts totaling \$1.9 million were awarded by HSMHA for screening and education clinics in 17 communities. The clinics are to provide screening and definitive diagnosis of sickle cell disease, education of the population at risk and of health personnel, referral of patients to appropriate sources for therapy and followup care, and to acquire detailed data on methodology.

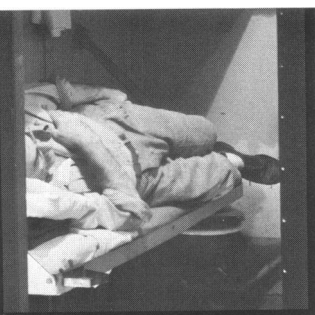
The clinics are one of three functional components of the National Sickle Cell Disease Program funded by the Department of Health, Education, and Welfare. The other two components are comprehensive research and community service centers and collaborative research and development contracts for the conduct of targeted research on sickle cell disease. These components implement the recommendations of the HEW Sickle Cell Disease Advisory Committee for a balanced program of community service and research directed against the disease. They involve the National Institutes of Health, the Health Services and Mental Health Administration, and other Federal, State, and private agencies. The National Heart and Lung Institute is responsible for coordinating the joint efforts of these agencies.

The screening and education clinics are located in Hartford, Conn., Centereach, N.Y., Washington, D.C., Baltimore, Md., Richmond, Va., Chicago, Ill., New Orleans, La., Charleston, S.C., Jackson, Miss., Miami, Fla., Detroit, Mich., Gary, Ind., Milwaukee, Wis., St. Louis, Mo., Portland, Oreg., Seattle, Wash., and Tacoma, Wash. Two contracts were awarded in Baltimore and St. Louis for two clinics in each city.

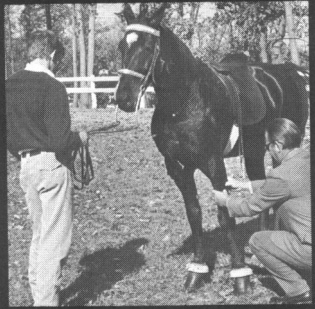
Cover—Familiarization with the electron microscope is part of the on-the-job training Baltimore City high school students are receiving at Johns Hopkins Hospital under the Health Sciences Careers Program. An article describing the program begins on page 787.



767



809



823



U.S. Department of Health, Education, and Welfare
 Elliot L. Richardson, Secretary
 Merlin K. DuVal, Jr., M.D., Assistant Secretary for Health and Scientific Affairs

Health Services and Mental Health Administration
 Vernon E. Wilson, M.D., Administrator

Health Services Reports
 Managing Director, Gerald N. Kurtz, Assistant Administrator for Information, Office of Information, Health Services and Mental Health Administration
 Marian Priest Tebben, Editor
 Esther C. Gould, Assistant Executive Editor
 Virginia M. Larson, Managing Editor
 Eugene Fite, Art Director

Opinions expressed are the authors' and do not necessarily reflect the views of Health Services Reports or the Health Services and Mental Health Administration. Trade names are used for identification only and do not represent an endorsement by the Health Services and Mental Health Administration.

Address correspondence to:
 Editor, Health Services Reports
 Room 4A-54, Parklawn Building
 5600 Fishers Lane
 Rockville, Md. 20852
 Telephone:
 Area code 301-443-2525

HEALTH SERVICES Reports

Formerly PUBLIC HEALTH REPORTS
 NOVEMBER 1972

• Published Since 1878
 VOL. 87 NO. 9

FEATURES

	Page
Jailhouse medicine—travesty of justice? <i>Seth B. Goldsmith</i> _____	767
Clinics for migrants _____	775
Characteristics of clinic personnel may influence family planning acceptance, <i>Donald W. MacCorquodale</i> _____	782
The health sciences careers program, <i>Moses S. Koch and Charles Hollander</i> _____	787
Vasectomy and psychosexual damage, <i>Philip M. Savage, Jr.</i> _____	803

PROGRAMS, PRACTICES, PEOPLE

Shawnee, Oklahoma, opens hearing clinic _____	805
New program helps minority schools train for the sciences _____	806
Long exposure to cold helps people stand it _____	806
AMA undertakes survey to identify and improve jail medical facilities _____	807
Health manpower in Pennsylvania _____	808
More lead in hair of females _____	808
More veterinarians will be needed _____	809
Memorial volume honors Weinerman _____	811
Batalden is appointed Assistant Surgeon General _____	812
Mental health training of public health workers _____	812
Residencies in public health and preventive medicine _____	813
Data on days of disability _____	814
Power drill can take samples of lung tissue _____	816
Nursing home surveyors are trained under HSMHA contracts _____	817
Regional program aids infant cardiac patients _____	817
Can learning capacity of infants be measured? _____	818
Spanish-language health communication teaching aids _____	819
Emergency room residencies _____	819
Education notes _____	820
DHEW grants awarded to train physician's assistants _____	821
Visual and other eye problems of U.S. children _____	822
New type of training for physician's assistants _____	822