

Morbidity and Mortality

Weekly Report

RECEIVED
 NOV 27 1964
 CDC LIBRARY
 ATLANTA 22, GA.

U. S. DEPARTMENT OF HEALTH, EDUCATION, AND WELFARE
 PUBLIC HEALTH SERVICE

Prepared by the **COMMUNICABLE DISEASE CENTER** 633-3311

For release November 27, 1964 ATLANTA, GEORGIA 30333 Vol. 13, No. 47

PROVISIONAL INFORMATION ON SELECTED NOTIFIABLE DISEASES IN THE UNITED STATES AND ON DEATHS IN SELECTED CITIES FOR WEEK ENDED NOVEMBER 21, 1964

EPIDEMIOLOGIC NOTES

ENCEPHALITIS

There were 31 cases of primary infectious encephalitis reported this week bringing the cumulative total of cases to 2,978 thus far this year. Two of this week's cases were reported from New Jersey and they represent delayed reports. There are no known current epidemics of arthropod-borne encephalitis, and the Houston, Texas, and New Jersey outbreaks have ended.

Reports concerning cases of encephalitis in Wisconsin and Indiana, believed to be caused by California encephalitis virus, are included in this issue.

PLAGUE

There have been no cases of human plague reported in the United States thus far this year. Last year, 1 fatal

case was reported from New Mexico in a 28-year-old Indian male.

The following table summarizes the number of reported cases of plague in the United States during the past decade.

Year	No. of Cases	Year	No. of Cases
1954	0	1959	4
1955	0	1960	2
1956	1	1961	3
1957	1	1962	0
1958	0	1963	1

Table 1. CASES OF SPECIFIED NOTIFIABLE DISEASES: UNITED STATES
 (Cumulative totals include revised and delayed reports through previous weeks)

Disease	47th Week Ended		Median 1959 - 1963	Cumulative, First 47 Weeks		
	November 21, 1964	November 23, 1963		1964	1963	Median 1959 - 1963
Aseptic meningitis	50	28	---	1,955	1,679	---
Brucellosis	8	8	8	365	334	535
Diphtheria	3	8	15	247	246	514
Encephalitis, primary infectious ..	31	---	---	2,978	---	---
Encephalitis, post-infectious ...	6	21	---	741	1,420	---
Hepatitis, infectious including						
serum hepatitis	691	793	793	34,406	39,085	39,085
Measles	2,316	2,442	2,371	446,048	371,315	401,998
Meningococcal infections	64	42	37	2,455	2,139	1,982
Poliomyelitis, Total	1	23	28	111	412	1,262
Paralytic	1	21	21	87	353	822
Nonparalytic	-	2	---	12	42	---
Unspecified	-	-	---	12	17	---
Streptococcal Sore Throat and						
Scarlet fever	7,513	6,548	---	354,389	304,044	---
Tetanus	1	5	---	250	256	---
Tularemia	7	4	---	300	264	---
Typhoid fever	5	8	12	411	491	754
Rabies in Animals	74	64	64	4,060	3,436	3,313

Table 2. NOTIFIABLE DISEASES OF LOW FREQUENCY

	Cum.		Cum.
Anthrax:	4	Psittacosis: Wisc - 1	42
Botulism:	15	Rabies in Man:	1
Leptospirosis: Penn - 2, N.C. - 1	99	Smallpox:	-
Malaria: Md - 1	90	Typhus-	
Plague:	-	Murine:	23
		Rky Mt. Spotted:	218

CALIFORNIA VIRUS ENCEPHALITIS - Wisconsin

Recent activity of California Encephalitis virus in Wisconsin has been reported from the Zoonosis Research Laboratory at the Wisconsin State Laboratory of Hygiene. Serologic surveys have revealed between 10 and 41 percent of persons studied have antibody to California Encephalitis virus. Degree of outdoor exposure appeared related to development of antibody.

Eleven serologically confirmed cases of encephalitis due to California Encephalitis virus have been reported since 1960. Hemagglutination-inhibition and mouse neutralization tests have been carried out on 351 serum samples sent to the Wisconsin State Laboratory between 1960 and 1964 from patients suspected of central nervous

system infections, and which were negative to all routine diagnostic antigens. Eleven patients showed a fourfold or greater rise in HI antibody titer to California Encephalitis virus between their acute and convalescent phase sera.

Five of the cases occurred in 1960, 2 in 1961, 1 in 1963 and 3 in 1964. Seven of the cases were male and 4 female. The ages of the patients ranged from 6 months to 11 years, and resided mainly in rural areas of western Wisconsin. Clinically all patients had fever, 9 complained of headache, 8 experienced nausea and/or vomiting and the same number had stiff neck. Six of these patients exhibited lethargy and 5 suffered convulsions; only 1 exhibited incoordination. (See table below)

Age of Patient	Onset Month and Year	Sex		Symptoms						
		M	F	Fever	Headache	Nausea or Vomiting	Stiff Neck	Lethargy	Convulsions	Incoordination
3	8/60		x	x	x	x		x		
7	8/60		x	x			x		x	
8	9/60		x	x	x		x		x	
4	9/60	x		x	x	x	x	x	x	
6 mo.	9/60	x		x		x	x	x		x
9	7/61	x		x	x					
5	9/61	x		x	x	x				
11	7/63	x		x	x	x	x	x		
4	7/64		x	x	x	x	x	x	x	
4	7/64	x		x	x	x	x	x		
3	9/64	x		x	x	x	x		x	
Total		7	4	11	9	8	8	6	5	1

The California Encephalitis virus has been isolated from the brain of a fatal case of encephalitis which occurred in 1960 and the tissue frozen since that time. The isolation was done at the Zoonosis Research Laboratory of the Wisconsin State Laboratory of Hygiene by Dr. Wayne Thompson and was confirmed by Dr. Ralph Anslow, Veterinary Science Department, University of Wisconsin, and Dr. Wm. McD. Hammon, University of

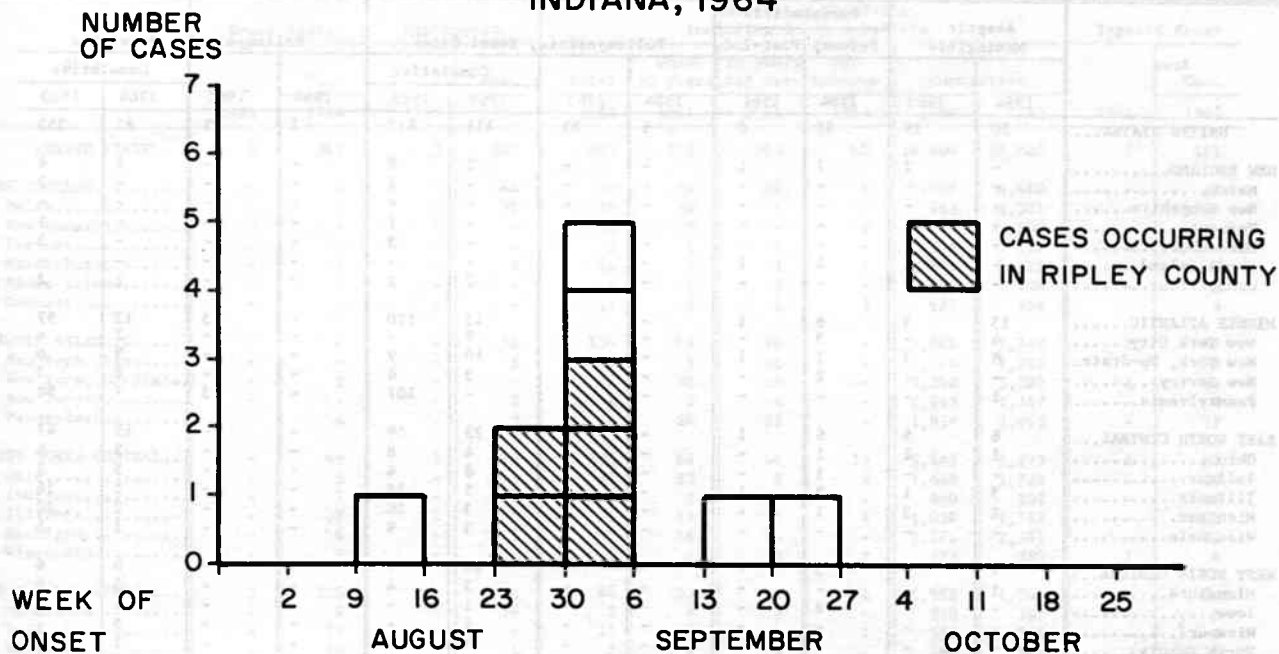
Pittsburgh School of Public Health. The identity of the isolate as a California group virus was confirmed at CDC. (Reported by A. S. Evans, M.D., Director, State Laboratory of Hygiene, Laboratory of the Wisconsin State Board of Health, Dr. Wayne Thompson, Chief, Zoonosis Research Laboratory, Wisconsin State Laboratory of Hygiene, and Dr. Robert Hanson, University of Wisconsin Veterinary Science Department.)

ENCEPHALITIS - Indiana

During the late summer and early fall a number of cases of suspected encephalitis occurred in southeastern Indiana. A total of 10 cases have thus far been serologically confirmed as California Encephalitis. As shown in the figure below, the first case occurred in mid-August. A peak was observed during the last week of August and the first week of September with 2 and 5 cases, respec-

tively. Single cases occurred during each of the last two weeks of September. Five of the cases occurred in Ripley County, the remainder were scattered through 3 counties in southeastern Indiana. The Ripley County cases all occurred during the weeks ended August 29 and September 5. All cases occurred in children between the ages of 4 and 16 years. Nine of the ten cases were in males.

**CASES OF ENCEPHALITIS DUE TO CALIFORNIA VIRUS
BY WEEK OF ONSET
INDIANA, 1964**



Efforts were made to collect mosquitoes during late October; however, the advent of cold weather prevented collection of adequate numbers for study.

Serologic investigation of encephalitis cases occurring

in the same area during the previous five years is currently underway in an effort to further delineate the problem. (Reported by Dr. A. L. Marshall, Jr., Director of Preventive Medicine, State Board of Health, Indianapolis, Indiana.)

LEPTOSPIROSIS – North Carolina

A 33-year-old male meat packing-house worker contracted leptospirosis in Stantonburg, North Carolina. The onset of his illness was October 4 when he noted a sore throat and had chills and fever to 103° F. He consulted a private physician who treated him with penicillin for 5 days. On October 10, the fever and chills recurred and was associated with headache and general malaise. The following day he noted a stiff neck. He was admitted to a local hospital on October 12.

On admission to the hospital, nuchal rigidity was described, but no jaundice, conjunctivitis or organomegaly noted. The urinalysis and peripheral white blood count were within the normal range. A lumbar puncture revealed 13 white cells, 12 of which were polymorphonucleocytes. Serum leptospiral agglutination tests were positive with 5 antigens, the strongest being *Leptospira icterohemorrhagiae* which was positive to a 1:40 dilution. The patient improved and was discharged October 17, feeling well.

At the packing-house, the patient eviscerates beef cattle. He has had this job since March 1961. During the

evisceration procedure, the beef bladder, frequently full of urine, is punctured and sometimes spills over him. (Reported by Jacob Koomen, Jr., M.D., M.P.H., Assistant State Health Director, North Carolina State Board of Health, and an EIS Officer.)

INTERNATIONAL NOTES

Yellow Fever

In 1963, the total number of yellow fever cases reported to the World Health Organization for the whole world amounted to 144 cases and 75 deaths. In 1962, 62 cases and 57 deaths were reported. The increase in world incidence since 1962 was reflected by the 81 cases reported by Bolivia.

Apart from 3 cases reported by Ghana, all the 1963 cases were observed in South America, and were comprised solely of jungle yellow fever. All countries of that continent which reported cases in 1963 also reported cases in 1961 or 1962.

(International Notes continued on back page)

Morbidity and Mortality Weekly Report

Table 3. CASES OF SPECIFIED NOTIFIABLE DISEASES: UNITED STATES
FOR WEEKS ENDED
NOVEMBER 21, 1964 AND NOVEMBER 23, 1963 (47TH WEEK)

Area	Aseptic Meningitis		Encephalitis		Poliomyelitis, Total Cases				Poliomyelitis, Paralytic			
	1964	1963	Primary	Post-Inf.	1964	1963	Cumulative		1964	1963	Cumulative	
							1964	1963			1964	1963
UNITED STATES...	50	28	31	6	1	23	111	412	1	21	87	353
NEW ENGLAND.....	-	2	1	1	-	-	2	8	-	-	2	8
Maine.....	-	-	-	-	-	-	-	2	-	-	-	2
New Hampshire.....	-	-	-	-	-	-	-	-	-	-	-	-
Vermont.....	-	-	-	-	-	-	-	1	-	-	-	1
Massachusetts.....	-	-	-	-	-	-	-	3	-	-	-	3
Rhode Island.....	-	2	1	1	-	-	-	-	-	-	-	-
Connecticut.....	-	-	-	-	-	-	2	2	-	-	2	2
MIDDLE ATLANTIC.....	13	3	6	1	-	3	15	120	-	3	13	97
New York City.....	4	-	3	-	-	-	2	-	-	-	2	-
New York, Up-State.....	8	3	1	1	-	-	10	9	-	-	9	6
New Jersey.....	-	-	2	-	-	-	3	4	-	-	2	3
Pennsylvania.....	1	-	-	-	-	3	-	107	-	3	-	88
EAST NORTH CENTRAL...	6	5	6	1	-	-	23	58	-	-	15	47
Ohio.....	1	1	1	-	-	-	4	8	-	-	2	4
Indiana.....	-	-	1	-	-	-	8	4	-	-	5	3
Illinois.....	3	1	3	1	-	-	5	17	-	-	5	16
Michigan.....	2	3	1	-	-	-	3	20	-	-	2	20
Wisconsin.....	-	-	-	-	-	-	3	9	-	-	1	4
WEST NORTH CENTRAL...	1	-	3	-	-	-	10	7	-	-	8	6
Minnesota.....	1	-	-	-	-	-	3	4	-	-	2	4
Iowa.....	-	-	2	-	-	-	1	-	-	-	1	-
Missouri.....	-	-	-	-	-	-	4	-	-	-	3	-
North Dakota.....	-	-	-	-	-	-	1	1	-	-	1	-
South Dakota.....	-	-	-	-	-	-	-	1	-	-	-	1
Nebraska.....	-	-	-	-	-	-	-	1	-	-	-	1
Kansas.....	-	-	1	-	-	-	1	-	-	-	1	-
SOUTH ATLANTIC.....	6	1	1	-	1	19	34	94	1	17	28	81
Delaware.....	-	1	-	-	-	-	-	1	-	-	-	1
Maryland.....	-	-	-	-	-	-	1	1	-	-	1	1
Dist. of Columbia..	-	-	-	-	-	-	-	1	-	-	-	-
Virginia.....	1	-	-	-	-	3	4	21	-	3	4	16
West Virginia.....	1	-	-	-	-	-	1	3	-	-	1	3
North Carolina.....	-	-	-	-	-	1	12	5	-	-	7	4
South Carolina.....	1	-	-	-	-	1	3	8	-	1	3	7
Georgia.....	-	-	-	-	1	-	3	21	1	-	3	20
Florida.....	3	-	1	-	-	14	10	33	-	13	9	29
EAST SOUTH CENTRAL...	1	4	1	-	-	1	6	72	-	1	5	66
Kentucky.....	-	-	-	-	-	-	-	-	-	-	-	-
Tennessee.....	1	2	1	-	-	-	3	10	-	-	2	9
Alabama.....	-	-	-	-	-	-	2	53	-	-	2	48
Mississippi.....	-	2	-	-	-	1	1	9	-	1	1	9
WEST SOUTH CENTRAL...	-	-	1	1	-	-	10	26	-	-	8	25
Arkansas.....	-	-	-	1	-	-	-	4	-	-	-	3
Louisiana.....	-	-	1	-	-	-	-	14	-	-	-	14
Oklahoma.....	-	-	-	-	-	-	3	1	-	-	2	1
Texas.....	-	-	-	-	-	-	7	7	-	-	6	7
MOUNTAIN.....	2	2	5	-	-	-	8	6	-	-	5	5
Montana.....	-	-	1	-	-	-	1	-	-	-	1	-
Idaho.....	-	-	-	-	-	-	1	1	-	-	1	1
Wyoming.....	-	-	-	-	-	-	2	-	-	-	2	-
Colorado.....	2	2	4	-	-	-	1	1	-	-	1	1
New Mexico.....	-	-	-	-	-	-	3	1	-	-	-	-
Arizona.....	-	-	-	-	-	-	-	3	-	-	-	3
Utah.....	-	-	-	-	-	-	-	-	-	-	-	-
Nevada.....	-	-	-	-	-	-	-	-	-	-	-	-
PACIFIC.....	21	11	7	2	-	-	3	21	-	-	3	18
Washington.....	-	2	1	-	-	-	-	2	-	-	-	2
Oregon.....	-	-	1	-	-	-	1	2	-	-	1	1
California.....	21	9	5	2	-	-	2	17	-	-	2	15
Alaska.....	-	-	-	-	-	-	-	-	-	-	-	-
Hawaii.....	-	-	-	-	-	-	-	-	-	-	-	-
Puerto Rico	-	-	-	-	-	-	-	5	-	-	-	4

Morbidity and Mortality Weekly Report

417

Table 3. CASES OF SPECIFIED NOTIFIABLE DISEASES: UNITED STATES
FOR WEEKS ENDED
NOVEMBER 21, 1964 AND NOVEMBER 23, 1963 (47TH WEEK) - CONTINUED

Area	Brucellosis		Diphtheria		Infectious Hepatitis including Serum Hepatitis						Typhoid Fever	
	1964	Cum.	1964	Cum.	Total 1964	Under 20 years	20 years and over	Age Unknown	Cumulative		1964	Cum.
		1964		1964		1964	1964	1964	1964	1964		1963
UNITED STATES...	8	365	3	247	691	326	303	62	34,406	39,085	5	411
NEW ENGLAND.....	-	2	-	44	53	29	18	6	3,089	4,460	-	17
Maine.....	-	-	-	39	15	10	5	-	963	2,011	-	-
New Hampshire.....	-	-	-	-	5	3	-	2	241	540	-	-
Vermont.....	-	-	-	-	2	1	-	-	366	122	-	-
Massachusetts.....	-	2	-	5	14	8	5	1	704	1,122	-	8
Rhode Island.....	-	-	-	-	6	1	5	-	194	106	-	6
Connecticut.....	-	-	-	-	11	6	2	3	621	559	-	3
MIDDLE ATLANTIC.....	-	6	-	10	139	69	70	-	7,546	7,747	1	67
New York City.....	-	-	-	5	21	5	16	-	1,211	1,211	-	33
New York, Up-State.....	-	2	-	-	66	38	28	-	3,268	3,327	1	15
New Jersey.....	-	-	-	2	6	2	4	-	1,245	1,147	-	2
Pennsylvania.....	-	4	-	3	46	24	22	-	1,859	2,062	-	17
EAST NORTH CENTRAL...	-	49	1	10	125	66	44	15	5,485	6,273	1	81
Ohio.....	-	5	-	-	41	23	9	9	1,440	1,722	-	20
Indiana.....	-	1	-	1	4	2	2	-	460	569	-	23
Illinois.....	-	28	1	8	25	15	6	4	1,038	1,312	-	23
Michigan.....	-	6	-	1	50	26	24	-	2,174	2,381	-	11
Wisconsin.....	-	9	-	-	5	-	3	2	373	289	1	4
WEST NORTH CENTRAL...	5	155	-	34	44	25	13	6	1,888	1,740	-	30
Minnesota.....	-	9	-	18	5	2	3	-	218	267	-	3
Iowa.....	4	99	-	-	11	6	4	1	335	315	-	4
Missouri.....	-	10	-	1	8	4	4	-	463	589	-	13
North Dakota.....	-	2	-	-	-	-	-	-	63	92	-	2
South Dakota.....	1	18	-	2	1	1	-	-	134	119	-	1
Nebraska.....	-	13	-	4	12	6	1	5	65	119	-	3
Kansas.....	-	4	-	7	7	6	1	-	610	239	-	4
SOUTH ATLANTIC.....	1	38	1	65	67	31	35	1	3,211	3,956	1	94
Delaware.....	-	-	-	-	3	2	1	-	73	75	-	-
Maryland.....	-	-	-	1	16	3	13	-	580	498	-	8
Dist. of Columbia.....	-	-	-	-	3	1	2	-	68	106	-	-
Virginia.....	-	17	-	-	11	4	7	-	512	777	-	11
West Virginia.....	-	-	-	-	10	8	2	-	455	604	-	-
North Carolina.....	-	4	-	1	5	4	1	-	523	1,017	1	20
South Carolina.....	-	-	-	7	13	7	5	1	142	157	-	12
Georgia.....	1	13	-	30	-	-	-	-	105	167	-	27
Florida.....	-	4	1	26	6	2	4	-	753	555	-	16
EAST SOUTH CENTRAL...	-	18	-	30	20	12	8	-	2,327	3,568	1	42
Kentucky.....	-	6	-	-	5	5	-	-	820	1,049	-	10
Tennessee.....	-	5	-	2	10	5	5	-	826	1,380	-	19
Alabama.....	-	4	-	23	4	2	2	-	450	562	-	7
Mississippi.....	-	3	-	5	1	-	1	-	231	577	1	6
WEST SOUTH CENTRAL...	2	45	1	38	59	33	26	-	2,685	2,681	1	33
Arkansas.....	-	6	-	3	3	3	-	-	266	292	1	15
Louisiana.....	-	4	1	12	11	6	5	-	648	551	-	5
Oklahoma.....	1	8	-	-	-	-	-	-	126	118	-	9
Texas.....	1	27	-	23	45	24	21	-	1,645	1,720	-	4
MOUNTAIN.....	-	30	-	2	47	7	6	34	2,077	2,471	-	12
Montana.....	-	-	-	-	5	2	2	1	176	313	-	-
Idaho.....	-	-	-	-	6	-	-	6	292	424	-	-
Wyoming.....	-	-	-	-	1	1	-	-	83	35	-	1
Colorado.....	-	-	-	-	15	-	-	15	545	496	-	-
New Mexico.....	-	1	-	1	8	4	3	1	294	301	-	4
Arizona.....	-	2	-	1	11	-	-	11	458	562	-	7
Utah.....	-	26	-	-	1	-	1	-	178	322	-	-
Nevada.....	-	1	-	-	-	-	-	-	51	18	-	-
PACIFIC.....	-	22	-	14	137	54	83	-	6,098	6,189	-	35
Washington.....	-	-	-	13	11	4	7	-	615	1,035	-	2
Oregon.....	-	2	-	-	26	11	15	-	631	734	-	-
California.....	-	20	-	1	95	35	60	-	4,465	4,187	-	33
Alaska.....	-	-	-	-	5	4	1	-	271	190	-	-
Hawaii.....	-	-	-	-	-	-	-	-	116	43	-	-
Puerto Rico	-	-	-	12	20	11	9	-	912	796	-	13

Morbidity and Mortality Weekly Report

Table 3. CASES OF SPECIFIED NOTIFIABLE DISEASES: UNITED STATES
FOR WEEKS ENDED
NOVEMBER 21, 1964 AND NOVEMBER 23, 1963 (47TH WEEK) - CONTINUED

Area	Measles	Meningococcal Meningitis		Streptococcal Sore Throat and Scarlet Fever		Tetanus		Tularemia		Rabies in Animals		
		Cumulative		1964	1963	1964	Cum. 1964	1964	Cum. 1964	1964	Cum. 1964	
		1964	1963									
UNITED STATES...	2,316	64	2,455	2,139	7,513	6,548	1	250	7	300	74	4,060
NEW ENGLAND.....	491	3	81	130	761	657	-	9	-	1	-	33
Maine.....	80	-	6	19	82	96	-	-	-	-	-	28
New Hampshire.....	54	-	2	4	17	-	-	-	-	-	-	2
Vermont.....	4	-	4	6	2	9	-	-	-	-	-	2
Massachusetts.....	168	-	31	58	82	75	-	9	-	1	-	1
Rhode Island.....	15	-	10	12	42	26	-	-	-	-	-	-
Connecticut.....	170	3	28	31	536	451	-	-	-	-	-	-
MIDDLE ATLANTIC.....	90	7	323	298	356	386	-	22	-	1	3	116
New York City.....	10	1	45	46	13	19	-	-	-	-	-	-
New York, Up-State.....	40	4	97	93	261	276	-	8	-	-	1	108
New Jersey.....	10	1	104	47	36	53	-	6	-	-	-	-
Pennsylvania.....	30	1	77	112	46	38	-	8	-	1	2	8
EAST NORTH CENTRAL...	319	7	339	328	688	612	1	48	-	23	13	569
Ohio.....	57	-	88	90	77	85	1	13	-	1	8	290
Indiana.....	23	2	54	44	62	60	-	14	-	2	-	29
Illinois.....	19	2	91	67	123	116	-	13	-	14	3	110
Michigan.....	110	3	75	94	309	254	-	7	-	2	2	55
Wisconsin.....	110	-	31	33	117	97	-	1	-	4	-	85
WEST NORTH CENTRAL...	222	3	140	131	334	156	-	17	1	57	18	1,227
Minnesota.....	1	1	30	26	1	10	-	4	-	2	4	383
Iowa.....	83	-	8	7	96	22	-	6	-	1	6	440
Missouri.....	2	2	64	38	2	62	-	4	1	31	1	182
North Dakota.....	125	-	20	15	134	32	-	-	-	-	2	62
South Dakota.....	4	-	3	7	31	6	-	1	-	15	4	89
Nebraska.....	7	-	6	25	-	-	-	-	-	-	-	35
Kansas.....	NN	-	9	13	70	24	-	2	-	8	1	36
SOUTH ATLANTIC.....	204	11	493	399	840	649	-	61	1	30	10	553
Delaware.....	-	1	7	4	38	12	-	-	-	-	-	-
Maryland.....	8	-	36	57	147	43	-	3	-	-	-	2
Dist. of Columbia..	1	-	16	8	6	1	-	1	-	1	-	-
Virginia.....	64	2	59	86	264	228	-	7	1	7	5	290
West Virginia.....	71	-	35	21	180	229	-	1	-	-	1	36
North Carolina.....	38	6	84	75	36	28	-	15	-	7	-	5
South Carolina.....	5	1	57	22	30	34	-	5	-	-	-	2
Georgia.....	3	-	81	33	24	5	-	4	-	14	1	117
Florida.....	14	1	118	93	115	69	-	25	-	1	3	101
EAST SOUTH CENTRAL...	130	3	187	146	1,050	1,125	-	32	-	30	14	547
Kentucky.....	44	-	61	31	69	47	-	8	-	2	-	58
Tennessee.....	75	1	57	68	888	1,008	-	12	-	20	12	413
Alabama.....	11	-	43	24	17	7	-	7	-	3	2	19
Mississippi.....	-	2	26	23	76	63	-	5	-	5	-	57
WEST SOUTH CENTRAL...	197	5	226	194	488	617	-	28	4	105	13	580
Arkansas.....	1	1	31	14	7	2	-	8	4	65	5	142
Louisiana.....	-	2	129	78	2	15	-	4	-	6	1	62
Oklahoma.....	10	-	13	34	29	26	-	1	-	20	1	93
Texas.....	186	2	53	68	450	574	-	15	-	14	6	283
MOUNTAIN.....	392	4	86	75	1,632	1,492	-	6	1	50	-	141
Montana.....	156	-	1	3	53	73	-	-	-	19	-	1
Idaho.....	21	1	4	6	105	105	-	1	-	-	-	-
Wyoming.....	-	-	5	7	45	129	-	2	-	10	-	-
Colorado.....	18	1	16	20	770	422	-	-	-	-	-	8
New Mexico.....	149	2	35	4	347	365	-	1	-	-	-	52
Arizona.....	9	-	8	11	119	115	-	1	-	-	-	66
Utah.....	39	-	7	20	192	283	-	1	1	21	-	3
Nevada.....	-	-	10	4	1	-	-	-	-	-	-	11
PACIFIC.....	271	21	580	438	1,364	854	-	27	-	3	3	294
Washington.....	129	3	48	39	449	121	-	3	-	-	-	-
Oregon.....	29	4	25	32	27	28	-	1	-	1	1	11
California.....	97	14	487	342	762	620	-	22	-	2	2	283
Alaska.....	6	-	7	12	18	38	-	-	-	-	-	-
Hawaii.....	10	-	13	13	108	47	-	1	-	-	-	-
Puerto Rico	57	-	32	10	4	5	-	63	-	-	-	25

Morbidity and Mortality Weekly Report

419

Table 4 (C). TOTAL DEATHS UNDER 1 YEAR OF AGE IN REPORTING CITIES

(Tables 4(A), 4(B), 4(C), and 4(D) will be published in sequence covering a four-week period.)^o

Area	For weeks ending				Area	For weeks ending			
	10/31	11/7	11/14	11/21		10/31	11/7	11/14	11/21
NEW ENGLAND:					SOUTH ATLANTIC:				
Boston, Mass.....	16	18	13	10	Atlanta, Ga.....	12	12	8	13
Bridgeport, Conn.....	1	5	2	2	Baltimore, Md.....	9	21	22	28
Cambridge, Mass.....	2	1	-	-	Charlotte, N.C.....	4	7	3	2
Fall River, Mass.....	4	1	2	-	Jacksonville, Fla.....	5	10	3	2
Hartford, Conn.....	4	3	5	4	Miami, Fla.....	2	8	1	9
Lowell, Mass.....	1	2	2	-	Norfolk, Va.....	7	8	3	6
Lynn, Mass.....	-	2	1	-	Richmond, Va.....	6	2	10	7
New Bedford, Mass.....	2	-	1	-	Savannah, Ga.....	1	2	3	2
New Haven, Conn.....	7	-	5	3	St. Petersburg, Fla.....	1	2	1	1
Providence, R.I.....	2	4	6	5	Tampa, Fla.....	7	6	4	4
Somerville, Mass.....	1	2	-	2	Washington, D.C.....	14	25	14	16*
Springfield, Mass.....	2	1	5	1	Wilmington, Del.....	2	2	6	3
Waterbury, Conn.....	-	1	1	-	EAST SOUTH CENTRAL:				
Worcester, Mass.....	6	2	5	-	Birmingham, Ala.....	8	7	8	9
MIDDLE ATLANTIC:					Chattanooga, Tenn.....	1	4	4	3
Albany, N.Y.....	6	4	5	3	Knoxville, Tenn.....	2	4	3	8
Allentown, Pa.....	-	2	-	1	Louisville, Ky.....	8	28	9	17
Buffalo, N.Y.....	8	6	9	7	Memphis, Tenn.....	15	12	13	9
Camden, N.J.....	4	2	1	2	Mobile, Ala.....	2	3	5	5
Elizabeth, N.J.....	-	-	1	6	Montgomery, Ala.....	3	9	2	-
Erie, Pa.....	3	5	3	4	Nashville, Tenn.....	6	6	7	3
Jersey City, N.J.....	5	3	3	5	WEST SOUTH CENTRAL:				
Newark, N.J.....	3	11	5	28	Austin, Tex.....	1	-	3	2
New York City, N.Y.....	69	79	86	91	Baton Rouge, La.....	5	-	2	2
Paterson, N.J.....	2	-	4	1	Corpus Christi, Tex.....	2	4	1	-
Philadelphia, Pa.....	29	17	30	34	Dallas, Tex.....	10	11	10	8
Pittsburgh, Pa.....	11	14	10	13	El Paso, Tex.....	3	2	3	6
Reading, Pa.....	1	1	1	3	Fort Worth, Tex.....	9	5	4	4
Rochester, N.Y.....	7	10	4	8	Houston, Tex.....	17	29	13	17
Schenectady, N.Y.....	-	1	-	2	Little Rock, Ark.....	11	9	4	2
Scranton, Pa.....	3	2	1	2	New Orleans, La.....	16	8	15	16
Syracuse, N.Y.....	3	1	3	3	Oklahoma City, Okla.....	7	5	2	8
Trenton, N.J.....	5	-	2	6	San Antonio, Tex.....	11	16	12	6
Utica, N.Y.....	1	-	-	1	Shreveport, La.....	4	7	5	5
Yonkers, N.Y.....	-	-	1	2	Tulsa, Okla.....	5	3	8	2
EAST NORTH CENTRAL:					MOUNTAIN:				
Akron, Ohio.....	4	7	4	2	Albuquerque, N. Mex.....	4	4	4	7
Canton, Ohio.....	2	3	1	4	Colorado Springs, Colo...	-	-	-	2
Chicago, Ill.....	48	36	55	62	Denver, Colo.....	8	4	10	6
Cincinnati, Ohio.....	8	6	11	6	Ogden, Utah.....	-	2	1	2
Cleveland, Ohio.....	25	13	1	5	Phoenix, Ariz.....	4	3	6	8
Columbus, Ohio.....	9	7	4	2	Pueblo, Colo.....	1	1	1	1
Dayton, Ohio.....	5	10	5	6	Salt Lake City, Utah.....	7	4	4	2
Detroit, Mich.....	32	14	26	25	Tucson, Ariz.....	4	2	1	3
Evansville, Ind.....	2	5	1	1	PACIFIC:				
Flint, Mich.....	2	7	4	4	Berkeley, Calif.....	1	1	-	-
Fort Wayne, Ind.....	2	3	5	1	Fresno, Calif.....	1	1	2	5
Gary, Ind.....	4	6	3	2	Glendale, Calif.....	-	1	1	2
Grand Rapids, Mich.....	3	3	4	1	Honolulu, Hawaii.....	6	6	5	3
Indianapolis, Ind.....	13	9	15	10	Long Beach, Calif.....	2	2	2	2
Madison, Wis.....	4	4	3	1	Los Angeles, Calif.....	28	29	28	34
Milwaukee, Wis.....	12	21	5	5	Oakland, Calif.....	1	3	3	7
Peoria, Ill.....	2	2	4	2	Pasadena, Calif.....	-	-	2	-
Rockford, Ill.....	2	4	6	3	Portland, Oreg.....	3	4	5	5
South Bend, Ind.....	1	1	4	2	Sacramento, Calif.....	4	1	2	4
Toledo, Ohio.....	4	4	3	1	San Diego, Calif.....	9	7	2	6
Youngstown, Ohio.....	2	2	3	2*	San Francisco, Calif.....	7	5	3	15
WEST NORTH CENTRAL:					San Jose, Calif.....	2	1	4	3
Des Moines, Iowa.....	3	3	3	7	Seattle, Wash.....	6	11	8	7
Duluth, Minn.....	2	-	3	1	Spokane, Wash.....	1	2	6	2
Kansas City, Kans.....	7	3	4	7	Tacoma, Wash.....	2	5	2	1
Kansas City, Mo.....	8	4	9	7					
Lincoln, Nebr.....	3	2	1	2					
Minneapolis, Minn.....	9	6	3	6					
Omaha, Nebr.....	3	7	5	2					
St. Louis, Mo.....	6	14	15	12					
St. Paul, Minn.....	6	3	2	3					
Wichita, Kans.....	5	2	7	3					

^oCurrent Week Mortality for 108 Selected Cities

4(A) Total Mortality, all ages.....	11,902
4(B) Pneumonia-Influenza Deaths, all ages.....	492
4(C) Total Deaths under 1 Year of Age.....	766
4(D) Total Deaths, Persons 65 years and over.....	6,574

*Estimate - based on average percent of divisional total.
Totals for previous weeks include reported corrections.

NOTE: All deaths by place of occurrence.

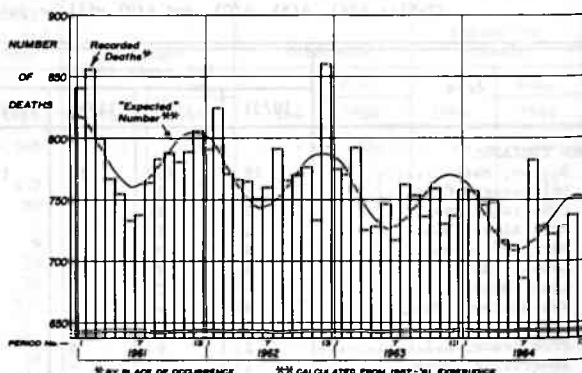
INFANT DEATHS IN 108 CITIES

The weekly average number of infant deaths in 108 cities for the four-week period ending November 21 was 738 as compared with an expected 752 weekly average.

INFANT DEATHS IN 108 CITIES

	Week Ending				4-Week Total	Weekly Average
	10/31	11/7	11/14	11/21		
Observed	730	743	715	766	2,954	738
Expected	752	753	753	753	3,011	752
Excess	-22	-10	-38	13	-57	-14

DEATHS UNDER ONE YEAR OF AGE IN 108 U.S. CITIES
Average Number per Week by Four-Week Periods



(See table page 419)

INTERNATIONAL NOTES

(Continued from page 415)

In Bolivia, the number of cases reported was much larger than in previous years. They occurred in the center of the country and in the west; in both cases, in the basin of tributaries of the Amazon. In Peru, cases occurred in valleys of tributaries of the Amazon. In Colombia, some of the infected areas were in the valley of the Magdalena which flows north into the Atlantic; cases also occurred there in 1962.

Yellow Fever: Cases and Deaths Reported to WHO in 1963

Africa	Cases	Deaths
Ghana	3	3
America		
Bolivia	81	12
Colombia	10	10
Peru	49	49
Venezuela	1	1
Total	144	75

(Abstracted from the Weekly Epidemiological Record of WHO, November 13, 1964.)

THE MORBIDITY AND MORTALITY WEEKLY REPORT, WITH A CIRCULATION OF 12,000 IS PUBLISHED BY THE COMMUNICABLE DISEASE CENTER, ATLANTA, GEORGIA 30333.

CHIEF, COMMUNICABLE DISEASE CENTER: JAMES L. GODDARD, M.D.
 CHIEF, EPIDEMIOLOGY BRANCH: A. D. LANGMUIR, M.D.
 CHIEF, STATISTICS SECTION: R. E. SERFLING, PH.D.
 ASST. CHIEF, STATISTICS SECTION: I. L. SHERMAN, M.S.
 CHIEF, SURVEILLANCE SECTION: D. A. HENDERSON, M.D.
 ASSISTANT EDITOR, MMWR: PAUL D. STOLLEY, M.D.

IN ADDITION TO THE ESTABLISHED PROCEDURES FOR REPORTING MORBIDITY AND MORTALITY, THE COMMUNICABLE DISEASE CENTER WELCOMES ACCOUNTS OF INTERESTING OUTBREAKS OR CASES, SUCH ACCOUNTS SHOULD BE ADDRESSED TO:

THE EDITOR
 MORBIDITY AND MORTALITY WEEKLY REPORT
 COMMUNICABLE DISEASE CENTER
 ATLANTA, GEORGIA 30333

NOTES: THESE PROVISIONAL DATA ARE BASED ON WEEKLY TELEGRAMS TO THE COMMUNICABLE DISEASE CENTER BY THE INDIVIDUAL STATE HEALTH DEPARTMENTS.

SYMBOLS: --- DATA NOT AVAILABLE
 - QUANTITY ZERO

PROCEDURES FOR CONSTRUCTION OF VARIOUS MORTALITY CURVES MAY BE OBTAINED FROM STATISTICS SECTION, COMMUNICABLE DISEASE CENTER, PUBLIC HEALTH SERVICE, U.S. DEPARTMENT OF HEALTH, EDUCATION, AND WELFARE, ATLANTA, GEORGIA 30333.

Library
 81
 7 61
 CDC

Official Business

U. S. DEPARTMENT OF
 HEALTH, EDUCATION, AND WELFARE
 PUBLIC HEALTH SERVICE
 Communicable Disease Center
 Atlanta, Georgia 30333



POSTAGE AND FEES PAID
U. S. DEPARTMENT OF H. E. W.