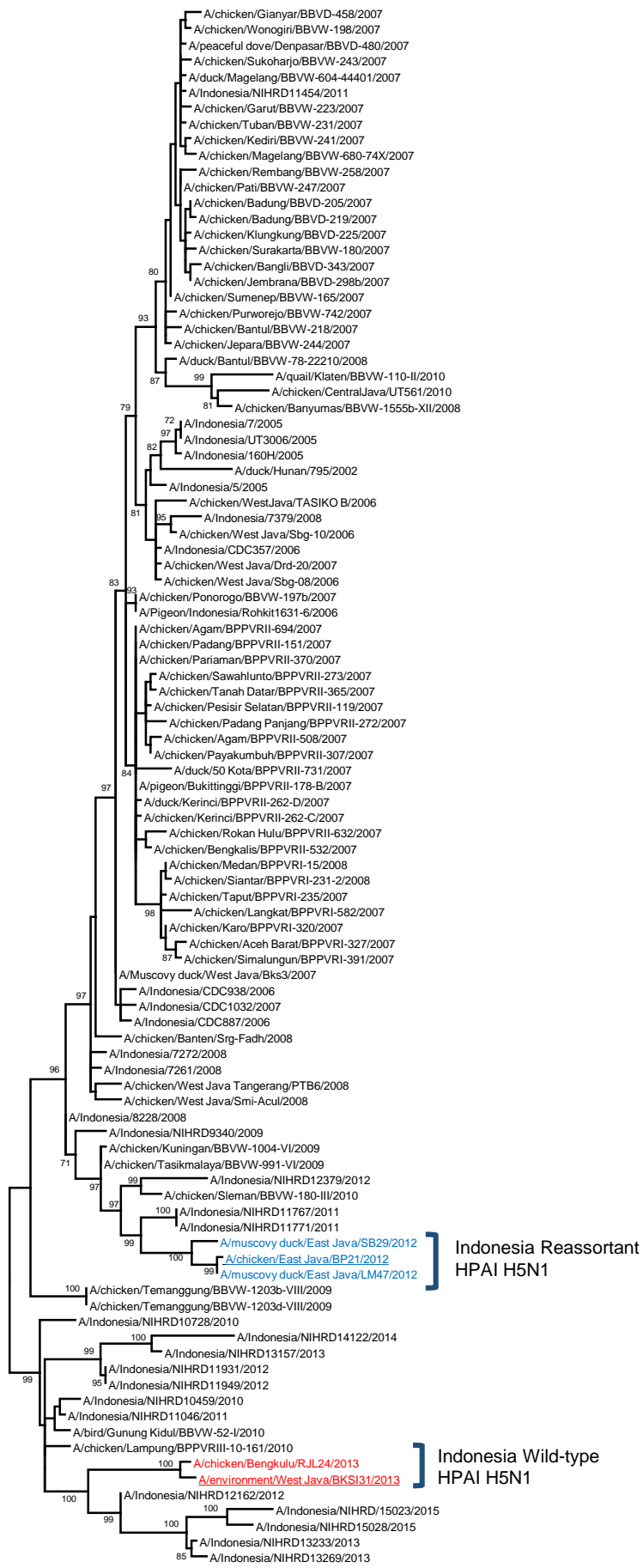


**Table S1. Specimens collected and viruses positive from the four provinces, Indonesia 2012-2013**

Province/ District	Investigation type	Date of collection	Cloacal specimens	Fecal specimens	Environmental surface specimens	A/H5N1 virus positive pools	Other influenza viruses	Viruses characterized
West Java, Karawang	Human case	3-5 July, 2012	117	36	24	5	H3N8 (n=1)	A/environment/West Java/KRW54/2012
Bengkulu, Rejang Lebung	Human case	6-8 March, 2013	72	0	31	1	0	A/chicken/Bengkulu/RJL24/2013
West Java, Bekasi	Human case	25 June, 2013	11	0	68	5	0	A/Environment/West Java/Bksi37/2013
East Java, Gresik	Market surveillance	5 November, 2012	23	0	30	3	0	A/Chicken/East Java/BP21/2012
East Java, Surabaya	Market surveillance	8-9 November, 2012	24	0	29	1	0	A/Muscovy duck/East Java/SB29/2012
East Java, Lamongan	Market surveillance	7 November, 2012	57	0	30	4	0	A/Muscovy Duck/East Java/LM47/2012

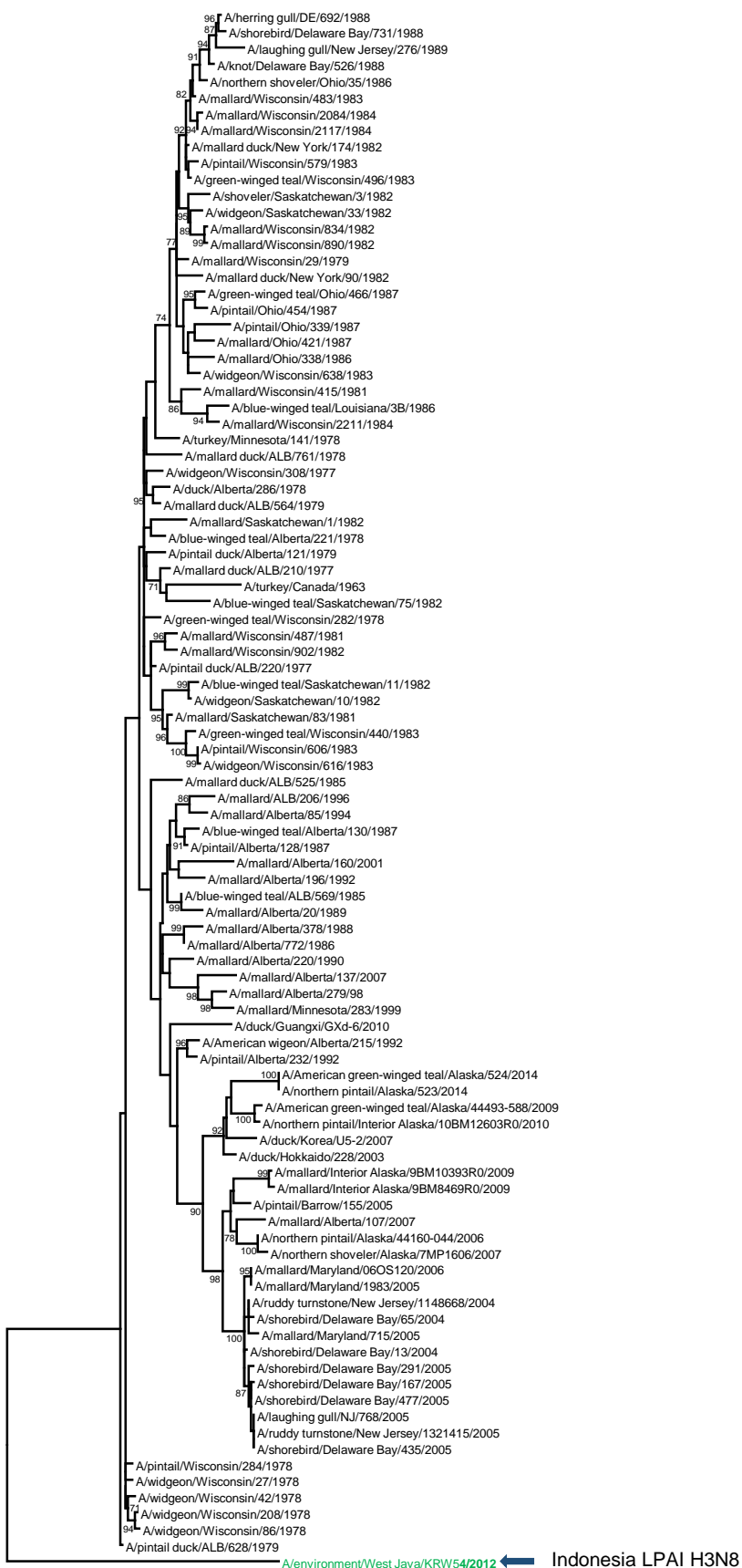
**Supplemental Figure 1 (a) and (b):** Phylogenetic tree of (a) HPAI A(H5N1) and (b) LPAI A virus NA genes. Viruses characterized herein are identified as follows: Indonesia H5N1 are colored red, Indonesia reassortant H5N1 are colored blue, Indonesia LPAI are colored green, and all virus further utilized for *in vivo* studies are underlined. Bootstrap values calculated following 1000 replicates are shown above each branch.

Figure S1(a)  
N1 gene



# Figure s1(b)

## N8 gene



0.01

A/environment/West Java/KRW54/2012 ← Indonesia LPAl H3N8

**Supplemental Figure 2 (a-f):** Phylogenetic tree of HPAI A(H5N1) and LPAI A virus internal genes; PB2(a), PB1(b), PA(c), NP(d), M(e), NS(f). Viruses characterized herein are identified as follows: Indonesia H5N1 are colored red, Indonesia reassortant H5N1 are colored blue, Indonesia LPAI are colored green, and all virus further utilized for *in vivo* studies are underlined. Bootstrap values calculated following 1000 replicates are shown above each branch.

Figure S2(a)  
PB2 gene



Figure S2(b)  
PB1 gene



Figure S2(c)  
PA gene





Figure S2(d)  
NP gene



Figure S2(e)  
M gene



Figure S2(f)  
NS gene

