

PICTORIAL REVIEW — CDC FILM STRIP

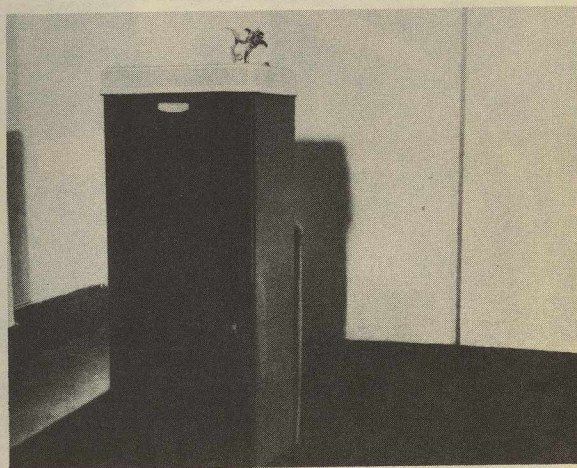
"SANITARY DESIGN IN DRINKING FOUNTAINS"

AUDIENCE: *Sanitarians, Sanitary Engineers, Schools of Public Health, Health Educators, etc.*

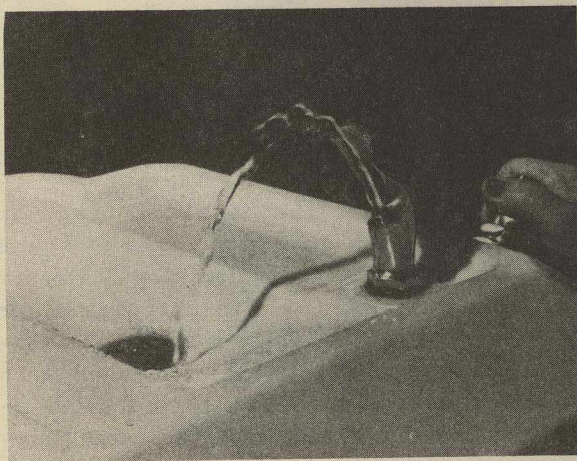
Improperly designed drinking fountains may transmit colds, mumps, measles, influenza, tuberculosis, and other diseases. Study this film strip and then look around your community to see for yourself if your drinking fountains are safe from the public health viewpoint.



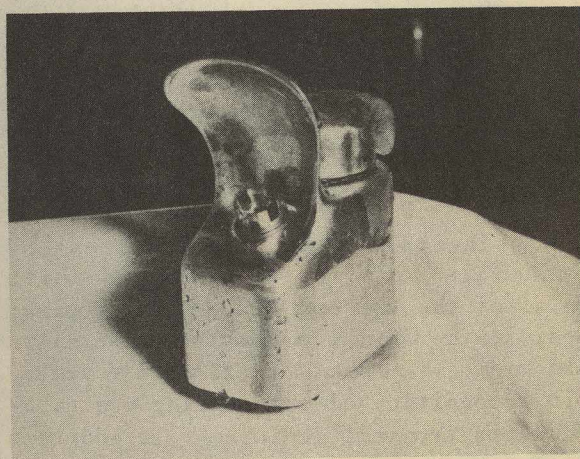
(1) This improperly designed drinking fountain may transmit disease.



(2) This type of fountain is of satisfactory sanitary design, constructed to prevent transmission of disease.



(3) The water jet should flow at an angle from the vertical so as not to fall back upon the nozzle.



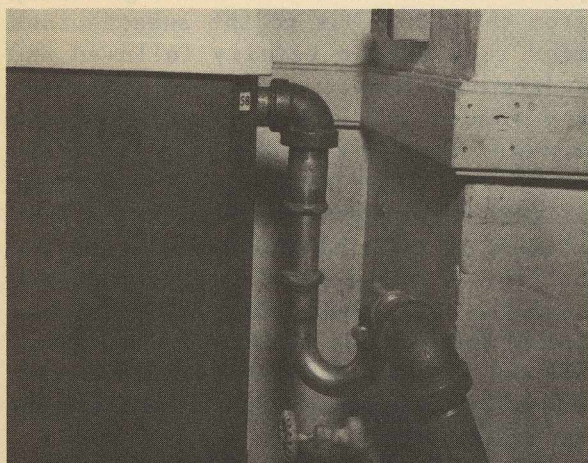
(4) The outer nozzle should be vented so that a finger placed on the nozzle will not contaminate the inner opening.



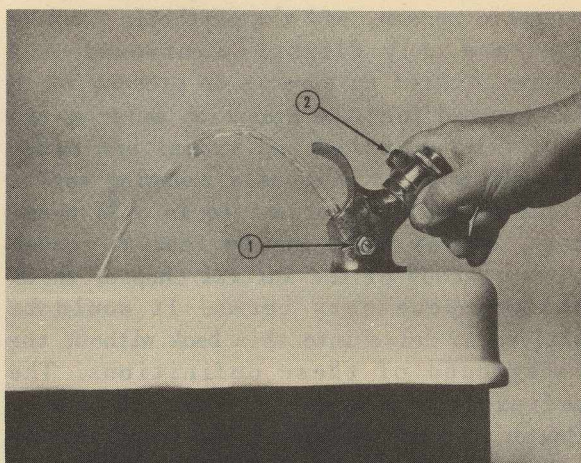
(5) The nozzle should be above the edge of the bowl so that dirty water in a flooded bowl will not cover the nozzle.



(6) The nozzle should be protected by a guard to prevent dripping water and the user's lips from reaching it.



(7) The drain must be trapped if connected to a waste pipe. Trapped drains prevent sewer gas from coming out of the waste pipe.



(8) The fountain should have a pressure control adjustment (1) and a water cut-off pedal, button, or handle (2). The pressure control adjustment is necessary to prevent the jet from going too high and far, or so low that lips must touch the nozzle.



(9) LEFT: Persons of any height should be able to reach the jet. Steps should be provided for children.

Production Number: 5-081
35 mm, Black and White, Silent Film Strip
Running Time: Indefinite (no narrative)
52 Frames

To obtain this film strip, address requests to:

Production Division
Utilization Branch
Communicable Disease Center
605 Volunteer Building
Atlanta 3, Georgia