

# Morbidity and Mortality Weekly Report

RECEIVED  
FEB 20 1964

Weekly Report

U. S. DEPARTMENT OF HEALTH, EDUCATION, AND WELFARE  
PUBLIC HEALTH SERVICE

Prepared by the **COMMUNICABLE DISEASE CENTER** 634-5131

For release February 21, 1964 ATLANTA, GEORGIA 30333 Vol. 13, No. 7

## PROVISIONAL INFORMATION ON SELECTED NOTIFIABLE DISEASES IN THE UNITED STATES AND ON DEATHS IN SELECTED CITIES FOR WEEK ENDED FEBRUARY 15, 1964

### CLAM-ASSOCIATED HEPATITIS - New Jersey and Pennsylvania

An outbreak of infectious hepatitis transmitted through raw clams has been reported by New Jersey and Pennsylvania. The outbreak commenced in October and appears to have terminated in late January. The clams were harvested along the South-Central New Jersey coast in the Pleasantville area. Several clamming areas in South and South-Central New Jersey have now been closed.

before in the Pleasantville, New Jersey area. Adults accounted for 104 of the 111 cases.

A graph of cases, by date of onset, shows a primary

CLAM ASSOCIATED CASES, BY DATES OF ONSET, NEW JERSEY-PENNSYLVANIA  
OCTOBER 1963 - JANUARY 1964

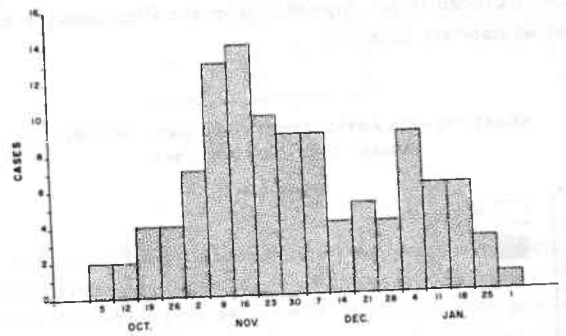


Table 1. CASES OF SPECIFIED NOTIFIABLE DISEASES: UNITED STATES  
(Cumulative totals include revised and delayed reports through previous weeks)

Disease	7th Week Ended		Median 1959 - 1963	Cumulative, First 7 Weeks		Median 1959 - 1963
	February 15, 1964	February 16, 1963		1964	1963	
Aseptic meningitis .....	19	19	---	174	164	---
Brucellosis .....	5	8	8	44	39	56
Diphtheria .....	1	3	14	28	38	136
Encephalitis, primary infectious ..	29	19	---	198	131	---
Encephalitis, post-infectious .....	8	-	---	40*	-	---
Hepatitis, infectious including serum hepatitis .....	939	1,231	1,231	6,424	7,837	7,837
Measles .....	8,397	11,139	11,825	43,675	62,180	65,781
Meningococcal infections .....	48	47	50	353	384	379
Poliomyelitis, Total .....	3	3	6	8	27	67
Paralytic .....	1	3	3	5	23	36
Nonparalytic .....	2	-	---	3	2	---
Unspecified .....	-	-	---	-	2	---
Streptococcal Sore Throat and Scarlet fever .....	10,263	11,037	---	66,269	64,114	---
Tetanus .....	6	-	---	33	24	---
Typhoid fever .....	8	6	---	48	31	---
Typhoid fever .....	9	5	8	48	34	52
Rabies in Animals .....	65	61	71	472	391	445

\* Excludes post-infectious, unspecified

Table 2. NOTIFIABLE DISEASES OF LOW FREQUENCY

Disease	Cum.	Cum.
Anthrax:	-	3
Botulism:	2	-
Leptospirosis:	3	-
Malaria: Calif - 1	15	-
Plague:	-	3
Psittacosis:	-	-
Rabies in Man:	-	-
Smallpox:	-	-
Typhus- Murine:	-	-
Rky Mt. Spotted:	-	3

peak in mid-November and a secondary peak in early January (See graph, preceding page).

Intensive tracing revealed that the clams had been purchased in a number of restaurants and seafood markets located predominantly in Southern New Jersey and in the Philadelphia metropolitan area. The clams had been supplied to these outlets by a variety of wholesalers and shippers. Clam sources for 79 cases have been traced to date; for 17 additional cases, information regarding restaurant sources did not permit tracing. Thirty of the 79 consumed clams supplied by a single primary source; the clam source for 26 of the 30 was the Pleasantville area on the south central New Jersey coast and for 4 this source was from an area approximately 35 miles to the north. Forty-six of an additional 49 cases consumed clams distributed by wholesalers whose sources were multiple but included large shipments from the Pleasantville area at appropriate dates.

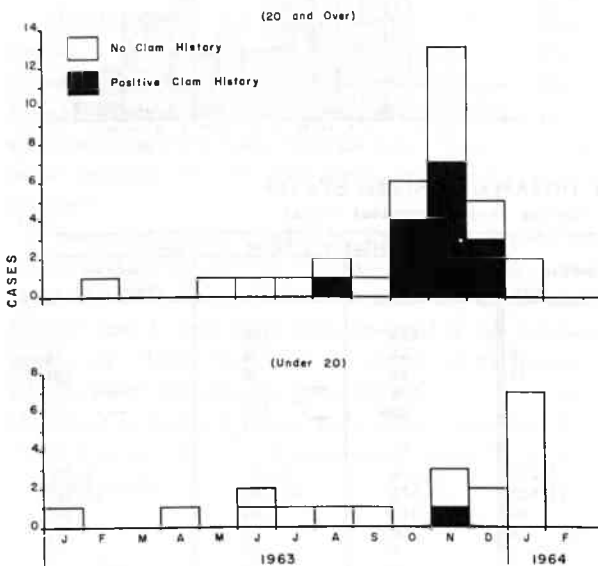
The secondary wave of cases in early January, noted previously, centers largely in the Philadelphia metropolitan area. Clams supplied to these cases are derived through wholesalers whose sources are multiple and, although including clams from the Pleasantville area, also include clams from multiple areas along the Eastern Seaboard. An immediate explanation for this secondary wave is not available.

Dr. Roscoe Kandle, New Jersey State Commissioner of Health, announced February 14 that several previously open areas along the South and South Central New Jersey coast have now been closed for clamming.

(Reported by W. J. Dougherty, M.D., Director, Division of Preventable Diseases, New Jersey State Department of Health; W. D. Schrack, Jr., M.D., Director, Communicable Disease Control, Pennsylvania State Department of Health; and Max Gross, M.D., Atlantic County Health Department and a team from the CDC.)

**Editor's Note:** This is the second outbreak of hepatitis transmitted through clams to be reported this year (See MMWR, Vol. 13, Page 37). The last previous major outbreak occurred in 1961 and was traced to clams taken from the Raritan Bay area (See MMWR, Vol. 10, number 7).

HEPATITIS-ATLANTIC COUNTY, BY DATE OF ONSET  
JANUARY 1963 - FEBRUARY 1964



In Atlantic County, where Pleasantville is located, an intensive survey was conducted of all hospitals and more than 120 physicians to discover all possible hepatitis cases since January 1963. In all, there were 52 cases of hepatitis of which 19 were among those under 20 years of age; 33 were 20 years of age and older. Fifteen of the 33 adult cases reported having consumed raw clams in the preceding 10 to 60 days. As shown in the graph (above), the clam-associated cases cluster in the October-December period.

### INFLUENZA - Washington State

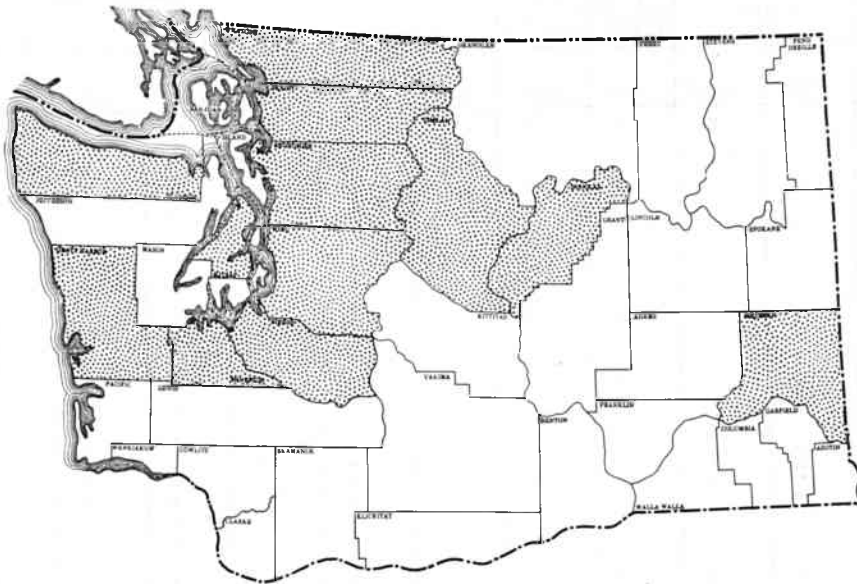
Additional outbreaks of influenza-like disease have been reported from 7 Washington counties during the past week, bringing to 12 the total number of counties involved in the current epidemic. (see map).

The disease has now spread from its original focus in the northwestern corner of the State to involve areas in central Washington as well as one eastern county on the Idaho border.

The city of Port Angeles (Clallam County) on the Olympic peninsula reported school absence rates as high as 15 percent during the past week, largely attributable to acute respiratory disease. A somewhat milder outbreak has been observed in nearby Kitsap County. The city of Tacoma, in Pierce County, noted increased school absenteeism during the week ended February 14, with many reports of illness clinically compatible with influenza. A rising absence rate has also been noted in Grays Harbor County.

In central Washington, several communities in the adjacent counties of Chelan and Douglas reported respiratory disease outbreaks during the past week. These were associated with absence rates of 17 percent in some junior high and high schools.

COUNTIES REPORTING OUTBREAKS OF INFLUENZA-LIKE DISEASE  
WASHINGTON, JANUARY, 27-FEBRUARY 18, 1964



Among the communities most severely affected has been the town of Tekoa (pop. 1189) in Whitman County, a few miles from the Idaho State line. School absence rates of 22-50 percent were noted last week. Cases have been typical of influenza clinically, with fever, headache, myalgia and sore throat the principal manifestations. Significant titer rises to influenza A<sub>2</sub> antigen have been demonstrated in paired sera recently obtained from several patients in the Seattle-King County area. Physicians in that area have observed an increasing incidence

of influenza-like illness during the past week. While absenteeism has been only slightly increased for the county school system as a whole (based on a 20 percent sample kept under continual surveillance), absence rates have reached 12-14 percent in selected schools. (Reported by Ernest A. Ager, M.D., Chief, Division of Epidemiology, State Department of Health, Olympia, Washington; and Donald R. Petersen, M.D., Epidemiologist, Seattle-King County Health Department, Seattle, Washington.)

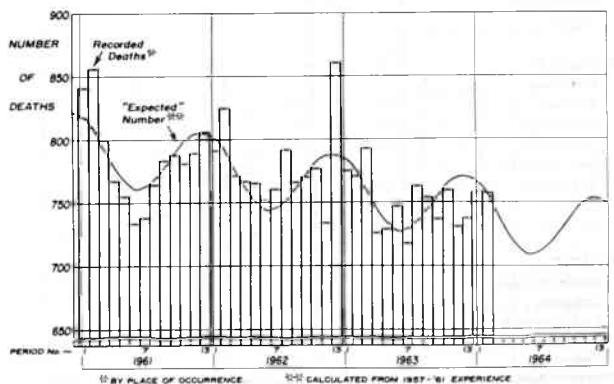
INFANT DEATHS IN 108 U. S. CITIES.

The weekly average number of infant deaths in 108 cities for the four-week period ending February 15 was 757 as compared with an expected 756 weekly average.

Total Deaths Under One Year of Age Recorded in 108 Cities

	Week Ending				4 Week Total	Weekly Average
	1/25	2/1	2/8	2/15		
Observed	803	769	716	740	3,028	757
Expected	761	758	754	751	3,024	756
Excess	42	11	-38	-11	4	1

DEATHS UNDER ONE YEAR OF AGE IN 108 U.S. CITIES  
Average Number per Week by Four-Week Periods



(See Table, page 59)

## Morbidity and Mortality Weekly Report

Table 3. CASES OF SPECIFIED NOTIFIABLE DISEASES: UNITED STATES  
FOR WEEKS ENDED  
FEBRUARY 15, 1964 AND FEBRUARY 16, 1963 ( 7th WEEK)

Area	Aseptic Meningitis		Encephalitis		Poliomyelitis, Total Cases				Poliomyelitis, Paralytic			
	1964	1963	Primary	Post-Inf.	1964	1963	Cumulative		1964	1963	Cumulative	
			1964	1964			1964	1963			1964	1963
UNITED STATES...	19	19	29	8	3	3	8	27	1	3	5	23
NEW ENGLAND.....	-	1	-	1	-	-	-	-	-	-	-	-
Maine.....	-	1	-	-	-	-	-	-	-	-	-	-
New Hampshire.....	-	-	-	-	-	-	-	-	-	-	-	-
Vermont.....	-	-	-	1	-	-	-	-	-	-	-	-
Massachusetts.....	-	-	-	-	-	-	-	-	-	-	-	-
Rhode Island.....	-	-	-	-	-	-	-	-	-	-	-	-
Connecticut.....	-	-	-	-	-	-	-	-	-	-	-	-
MIDDLE ATLANTIC.....	3	1	6	1	1	1	2	4	1	1	2	4
New York City.....	-	-	1	-	-	-	-	-	-	-	-	-
New York, Up-State.	2	-	2	1	-	1	1	3	-	1	1	3
New Jersey.....	1	-	3	-	1	-	1	-	1	-	1	-
Pennsylvania.....	-	1	-	-	-	-	-	1	-	-	-	1
EAST NORTH CENTRAL...	1	1	1	3	-	1	-	8	-	1	-	6
Ohio.....	-	1	-	-	-	-	-	2	-	-	-	1
Indiana.....	-	-	-	-	-	-	-	-	-	-	-	-
Illinois.....	1	-	-	3	-	-	-	5	-	-	-	4
Michigan.....	-	-	1	-	-	1	-	1	-	1	-	1
Wisconsin.....	-	-	-	-	-	-	-	-	-	-	-	-
WEST NORTH CENTRAL...	3	2	3	-	-	-	-	1	-	-	-	1
Minnesota.....	2	2	-	-	-	-	-	1	-	-	-	1
Iowa.....	-	-	1	-	-	-	-	-	-	-	-	-
Missouri.....	1	-	-	-	-	-	-	-	-	-	-	-
North Dakota.....	-	-	1	-	-	-	-	-	-	-	-	-
South Dakota.....	-	-	-	-	-	-	-	-	-	-	-	-
Nebraska.....	-	-	-	-	-	-	-	-	-	-	-	-
Kansas.....	-	-	1	-	-	-	-	-	-	-	-	-
SOUTH ATLANTIC.....	-	1	8	-	2	1	6	2	-	1	3	2
Delaware.....	-	1	-	-	-	-	-	-	-	-	-	-
Maryland.....	-	-	1	-	-	-	-	-	-	-	-	-
Dist. of Columbia..	-	-	-	-	-	-	-	-	-	-	-	-
Virginia.....	-	-	2	-	-	-	-	-	-	-	-	-
West Virginia.....	-	-	-	-	-	-	-	-	-	-	-	-
North Carolina.....	-	-	4	-	2	1	3	2	-	1	-	2
South Carolina.....	-	-	-	-	-	-	1	-	-	-	1	-
Georgia.....	-	-	-	-	-	-	-	-	-	-	-	-
Florida.....	-	-	1	-	-	-	2	-	-	-	2	-
EAST SOUTH CENTRAL...	2	2	2	-	-	-	-	1	-	-	-	-
Kentucky.....	-	1	-	-	-	-	-	-	-	-	-	-
Tennessee.....	-	1	-	-	-	-	-	-	-	-	-	-
Alabama.....	-	-	-	-	-	-	-	1	-	-	-	-
Mississippi.....	2	-	2	-	-	-	-	-	-	-	-	-
WEST SOUTH CENTRAL...	-	1	1	-	-	-	-	8	-	-	-	8
Arkansas.....	-	-	-	-	-	-	-	-	-	-	-	-
Louisiana.....	-	-	-	-	-	-	-	7	-	-	-	7
Oklahoma.....	-	-	-	-	-	-	-	-	-	-	-	-
Texas.....	-	1	1	-	-	-	-	1	-	-	-	1
MOUNTAIN.....	3	5	-	-	-	-	-	-	-	-	-	-
Montana.....	1	-	-	-	-	-	-	-	-	-	-	-
Idaho.....	-	-	-	-	-	-	-	-	-	-	-	-
Wyoming.....	-	-	-	-	-	-	-	-	-	-	-	-
Colorado.....	1	5	-	-	-	-	-	-	-	-	-	-
New Mexico.....	-	-	-	-	-	-	-	-	-	-	-	-
Arizona.....	1	-	-	-	-	-	-	-	-	-	-	-
Utah.....	-	-	-	-	-	-	-	-	-	-	-	-
Nevada.....	-	-	-	-	-	-	-	-	-	-	-	-
PACIFIC.....	7	5	8	3	-	-	-	3	-	-	-	2
Washington.....	-	3	-	1	-	-	-	-	-	-	-	-
Oregon.....	-	-	2	-	-	-	-	-	-	-	-	-
California.....	6	2	6	2	-	-	-	3	-	-	-	2
Alaska.....	-	-	-	-	-	-	-	-	-	-	-	-
Hawaii.....	1	-	-	-	-	-	-	-	-	-	-	-
Puerto Rico	---	-	---	---	---	-	-	-	---	-	-	-

# Morbidity and Mortality Weekly Report

57

Table 3. CASES OF SPECIFIED NOTIFIABLE DISEASES: UNITED STATES

FOR WEEKS ENDED

FEBRUARY 15, 1964 AND FEBRUARY 16, 1963 ( 7th WEEK) - Continued

Area	Brucellosis		Diphtheria		Infectious Hepatitis including Serum Hepatitis						Typhoid Fever	
	1964	Cum.	1964	Cum.	Total 1964	Under 20 years	20 years and over	Age Unknown	Cumulative		1964	Cum.
		1964		1964		1964	1964	1963	1964	1964		
UNITED STATES...	5	44	1	28	939	453	429	57	6,424	7,837	9	48
NEW ENGLAND.....	-	-	-	1	150	73	69	8	828	1,048	2	4
Maine.....	-	-	-	-	28	19	8	1	308	485	-	-
New Hampshire.....	-	-	-	-	12	6	6	-	83	81	-	-
Vermont.....	-	-	-	-	24	16	4	4	91	14	-	-
Massachusetts.....	-	-	-	1	15	8	7	-	146	325	2	3
Rhode Island.....	-	-	-	-	4	2	2	-	29	28	-	1
Connecticut.....	-	-	-	-	67	22	42	3	171	115	-	-
MIDDLE ATLANTIC.....	-	-	-	4	189	80	109	-	1,377	1,466	1	5
New York City.....	-	-	-	1	25	6	19	-	186	163	-	1
New York, Up-State.....	-	-	-	-	71	32	39	-	654	706	1	2
New Jersey.....	-	-	-	2	31	17	14	-	199	200	-	-
Pennsylvania.....	-	-	-	1	62	25	37	-	338	397	-	2
EAST NORTH CENTRAL.....	-	9	-	4	117	61	46	10	903	1,225	1	12
Ohio.....	-	-	-	-	26	10	13	3	261	367	1	11
Indiana.....	-	-	-	-	12	6	5	1	71	85	-	-
Illinois.....	-	8	-	4	17	9	7	1	107	228	-	1
Michigan.....	-	-	-	-	56	35	21	-	430	464	-	-
Wisconsin.....	-	1	-	-	6	1	-	5	34	81	-	-
WEST NORTH CENTRAL.....	2	22	-	8	73	43	21	9	430	342	2	2
Minnesota.....	-	-	-	1	4	1	2	1	25	66	-	-
Iowa.....	1	10	-	-	14	7	7	-	65	60	1	1
Missouri.....	-	3	-	-	22	14	8	-	95	135	1	1
North Dakota.....	-	-	-	3	3	2	1	-	24	8	-	-
South Dakota.....	-	4	-	-	9	8	1	-	48	11	-	-
Nebraska.....	1	5	-	4	4	-	2	2	11	25	-	-
Kansas.....	-	-	-	7	17	11	-	6	162	37	-	-
SOUTH ATLANTIC.....	1	2	1	4	101	50	51	-	625	895	1	15
Delaware.....	-	-	-	1	1	1	-	-	7	10	-	-
Maryland.....	-	-	-	9	5	4	-	-	100	85	-	-
Dist. of Columbia.....	-	-	-	4	4	-	-	-	13	28	-	-
Virginia.....	1	1	-	-	26	11	15	-	92	254	1	1
West Virginia.....	-	-	-	-	18	13	5	-	115	123	-	-
North Carolina.....	-	1	-	-	23	12	11	-	139	250	-	9
South Carolina.....	-	-	-	1	2	2	-	-	20	44	-	1
Georgia.....	-	-	1	-	-	-	-	-	10	24	-	-
Florida.....	-	-	-	2	18	2	16	-	129	77	-	4
EAST SOUTH CENTRAL.....	1	1	-	1	46	25	21	-	428	799	1	5
Kentucky.....	-	-	-	-	21	11	10	-	201	255	-	1
Tennessee.....	-	-	-	1	16	11	5	-	142	313	1	3
Alabama.....	1	1	-	4	4	-	4	-	57	111	-	1
Mississippi.....	-	-	-	5	3	2	-	-	28	120	-	-
WEST SOUTH CENTRAL.....	-	3	-	3	79	49	29	1	436	533	1	2
Arkansas.....	-	1	-	13	4	9	-	-	63	75	1	1
Louisiana.....	-	1	-	2	6	3	3	-	79	78	-	-
Oklahoma.....	-	1	-	4	3	1	-	-	26	38	-	1
Texas.....	-	-	-	1	56	39	16	1	268	342	-	-
MOUNTAIN.....	-	5	-	-	55	15	11	29	436	635	-	-
Montana.....	-	-	-	6	1	3	2	5	42	102	-	-
Idaho.....	-	-	-	5	-	-	-	-	40	88	-	-
Wyoming.....	-	-	-	8	6	2	-	-	15	5	-	-
Colorado.....	-	-	-	17	2	4	11	-	115	147	-	-
New Mexico.....	-	1	-	6	4	2	-	-	80	69	-	-
Arizona.....	-	1	-	10	-	-	10	-	90	141	-	-
Utah.....	-	3	-	2	1	-	1	-	47	77	-	-
Nevada.....	-	-	-	1	1	-	-	-	7	6	-	-
PACIFIC.....	1	2	-	3	129	57	72	-	961	894	-	3
Washington.....	-	-	-	3	21	9	12	-	117	147	-	-
Oregon.....	-	-	-	20	12	8	-	-	104	133	-	-
California.....	1	2	-	84	34	50	-	-	689	585	-	3
Alaska.....	-	-	-	3	2	1	-	-	34	23	-	-
Hawaii.....	-	-	-	1	-	1	-	-	17	6	-	-
Puerto Rico	---	-	---	1	---	---	---	---	4	43	---	1

## Morbidity and Mortality Weekly Report

Table 3. CASES OF SPECIFIED NOTIFIABLE DISEASES: UNITED STATES  
FOR WEEKS ENDED

FEBRUARY 15, 1964 AND FEBRUARY 16, 1963 ( 7th WEEK) - Continued

Area	Measles	Meningococcal Meningitis		Streptococcal Sore Throat and Scarlet Fever		Tetanus		Tularemia		Rabies in Animals		
		1964	Cumulative		1964	1963	1964	Cum. 1964	1964	Cum. 1964	1964	Cum. 1964
			1964	1963								
UNITED STATES...	8,397	48	353	384	10,263	11,037	6	33	8	48	65	472
NEW ENGLAND.....	656	-	10	33	997	1,209	-	-	-	-	-	1
Maine.....	119	-	-	7	35	236	-	-	-	-	-	-
New Hampshire.....	4	-	-	-	3	10	-	-	-	-	-	1
Vermont.....	156	-	-	1	11	21	-	-	-	-	-	-
Massachusetts.....	101	-	3	11	58	192	-	-	-	-	-	-
Rhode Island.....	40	-	2	4	109	108	-	-	-	-	-	-
Connecticut.....	236	-	5	10	781	642	-	-	-	-	-	-
MIDDLE ATLANTIC.....	1,608	5	46	45	358	783	-	-	-	-	1	15
New York City.....	552	-	7	5	29	55	-	-	-	-	-	-
New York, Up-State.....	287	3	17	12	179	374	-	-	-	-	1	14
New Jersey.....	400	2	9	9	64	150	-	-	-	-	-	-
Pennsylvania.....	369	-	13	19	86	204	-	-	-	-	-	1
EAST NORTH CENTRAL...	2,044	7	54	66	1,409	1,373	-	4	-	5	7	45
Ohio.....	368	4	19	21	298	244	-	1	-	1	4	25
Indiana.....	481	-	7	11	117	191	-	-	-	-	-	4
Illinois.....	246	1	10	11	179	159	-	2	-	2	2	6
Michigan.....	761	1	15	14	536	475	-	1	-	1	-	5
Wisconsin.....	188	1	3	9	279	304	-	-	-	1	1	5
WEST NORTH CENTRAL...	217	4	17	19	370	462	-	2	2	13	21	146
Minnesota.....	-	-	3	3	35	27	-	-	-	1	6	43
Iowa.....	79	-	-	-	95	122	-	-	-	1	8	46
Missouri.....	36	3	8	7	19	7	-	2	2	8	4	29
North Dakota.....	102	-	2	1	89	160	-	-	-	-	2	10
South Dakota.....	-	-	-	2	9	4	-	-	-	-	1	11
Nebraska.....	-	1	1	6	1	2	-	-	-	-	-	5
Kansas.....	NN	-	3	-	122	140	-	-	-	3	-	2
SOUTH ATLANTIC.....	768	12	85	88	1,006	1,264	3	14	3	8	8	87
Delaware.....	6	-	-	1	2	5	-	-	-	-	-	-
Maryland.....	99	-	11	14	98	46	-	-	-	-	-	-
Dist. of Columbia..	21	-	-	1	10	-	-	-	-	-	-	-
Virginia.....	192	-	7	19	354	274	-	-	-	3	6	71
West Virginia.....	260	-	5	7	310	270	-	-	-	-	-	2
North Carolina.....	42	1	10	14	40	69	3	7	-	-	-	1
South Carolina.....	96	1	13	6	58	277	-	2	-	-	-	-
Georgia.....	-	-	6	4	8	4	-	-	3	5	1	5
Florida.....	52	10	33	22	126	319	-	5	-	-	1	8
EAST SOUTH CENTRAL...	1,342	1	29	24	1,763	1,512	-	3	2	12	11	81
Kentucky.....	705	-	5	5	81	254	-	-	-	1	2	15
Tennessee.....	555	-	13	12	1,571	1,071	-	1	2	9	9	63
Alabama.....	13	-	6	4	22	95	-	2	-	2	-	3
Mississippi.....	69	1	5	3	89	92	-	-	-	-	-	-
WEST SOUTH CENTRAL...	68	2	27	37	1,122	1,407	2	5	1	9	12	70
Arkansas.....	62	-	4	3	5	17	-	-	-	1	5	21
Louisiana.....	1	1	20	12	8	24	-	3	-	-	3	7
Oklahoma.....	5	1	3	7	32	69	-	-	1	8	1	6
Texas.....	-	-	-	15	1,077	1,297	2	2	-	-	3	36
MOUNTAIN.....	332	5	22	14	1,510	1,342	1	1	-	1	5	17
Montana.....	66	-	-	-	88	57	-	-	-	-	-	-
Idaho.....	34	-	1	-	139	111	-	-	-	-	-	-
Wyoming.....	-	-	1	-	41	49	1	1	-	1	-	-
Colorado.....	33	-	6	3	527	552	-	-	-	-	-	-
New Mexico.....	1	3	8	2	294	317	-	-	-	-	4	11
Arizona.....	151	1	2	3	223	171	-	-	-	-	1	6
Utah.....	38	-	1	5	197	85	-	-	-	-	-	-
Nevada.....	9	1	3	1	1	-	-	-	-	-	-	-
PACIFIC.....	1,362	12	63	58	1,728	1,685	-	4	-	-	-	10
Washington.....	690	-	4	5	669	510	-	-	-	-	-	-
Oregon.....	145	2	3	2	58	38	-	-	-	-	-	-
California.....	479	9	51	47	897	989	-	4	-	-	-	10
Alaska.....	42	-	2	4	89	108	-	-	-	-	-	-
Hawaii.....	6	1	3	-	15	40	-	-	-	-	-	-
Puerto Rico	---	---	-	-	---	-	---	-	---	-	---	-

# Morbidity and Mortality Weekly Report

Table 4 (C). TOTAL DEATHS UNDER 1 YEAR OF AGE IN REPORTING CITIES

(Tables 4(A), 4(B), 4(C), and 4(D) will be published in sequence covering a four-week period.)<sup>c</sup>

Area	For weeks ending				Area	For weeks ending			
	1/25/64	2/1/64	2/8/64	2/15/64		1/25/64	2/1/64	2/8/64	2/15/64
<b>NEW ENGLAND:</b>					<b>SOUTH ATLANTIC:</b>				
Boston, Mass.....	15	11	13	12	Atlanta, Ga.....	13	11	11	11
Bridgeport, Conn.....	2	3	2	1	Baltimore, Md.....	26	17	19	16*
Cambridge, Mass.....	-	2	1	-	Charlotte, N.C.....	4	2	4	2
Fall River, Mass.....	-	-	5	1	Jacksonville, Fla.....	2	4	3	6
Hartford, Conn.....	6	8	2	5	Miami, Fla.....	7	5	2	4
Lowell, Mass.....	2	1	1	1	Norfolk, Va.....	1	6	8	5
Lynn, Mass.....	1	3	-	1	Richmond, Va.....	8	6	8	8
New Bedford, Mass.....	1	2	-	2	Savannah, Ga.....	2	3	1	1
New Haven, Conn.....	4	3	5	-	St. Petersburg, Fla.....	2	1	1	3
Providence, R.I.....	1	3	4	4	Tampa, Fla.....	4	7	2	9
Somerville, Mass.....	1	1	-	-	Washington, D.C.....	28	14	23	7
Springfield, Mass.....	1	4	2	3	Wilmington, Del.....	-	2	2	4
Waterbury, Conn.....	1	2	3	1					
Worcester, Mass.....	1	3	-	1	<b>EAST SOUTH CENTRAL:</b>				
<b>MIDDLE ATLANTIC:</b>					Birmingham, Ala.....	3	8	4	11
Albany, N.Y.....	6	3	3	5	Chattanooga, Tenn.....	2	2	1	2
Allentown, Pa.....	1	-	-	-	Knoxville, Tenn.....	4	4	3	5
Buffalo, N.Y.....	14	10	8	12	Louisville, Ky.....	28	10	3	9
Camden, N.J.....	4	5	1	1	Memphis, Tenn.....	10	8	11	6
Elizabeth, N.J.....	4	1	1	2	Mobile, Ala.....	4	3	1	3
Erie, Pa.....	2	3	1	2	Montgomery, Ala.....	6	1	3	-
Jersey City, N.J.....	6	4	7	3	Nashville, Tenn.....	6	8	4	12
Newark, N.J.....	9	3	5	27	<b>WEST SOUTH CENTRAL:</b>				
New York City, N.Y.....	85	86	88	90	Austin, Tex.....	2	4	-	2*
Paterson, N.J.....	2	2	2	-	Baton Rouge, La.....	6	4	8	2
Philadelphia, Pa.....	40	44	-	52	Corpus Christi, Tex.....	1	4	2	4
Pittsburgh, Pa.....	18	9	23	5	Dallas, Tex.....	12	14	12	13
Reading, Pa.....	1	-	1*	-	El Paso, Tex.....	3	8	7	4
Rochester, N.Y.....	9	6	3	6	Fort Worth, Tex.....	3	5	5	8
Schenectady, N.Y.....	2	1	-	-	Houston, Tex.....	24	16	13	5
Scranton, Pa.....	1	4	1	-	Little Rock, Ark.....	6	3	5	2
Syracuse, N.Y.....	6	4	6	6	New Orleans, La.....	10	8	14	15
Trenton, N.J.....	5	3	4	1	Oklahoma City, Okla.....	4	10	1	7
Utica, N.Y.....	1	-	-	1	San Antonio, Tex.....	14	10	9	8
Yonkers, N.Y.....	3	1	2	1	Shreveport, La.....	1	5	5	8
					Tulsa, Okla.....	5	8	5	7
<b>EAST NORTH CENTRAL:</b>					<b>MOUNTAIN:</b>				
Akron, Ohio.....	1	2	2	4	Albuquerque, N. Mex.....	10	2	4	4
Canton, Ohio.....	-	4	1	-	Colorado Springs, Colo...	1	2	1	-
Chicago, Ill.....	49	41	57	40	Denver, Colo.....	6	14	7	8
Cincinnati, Ohio.....	9	2	6	11	Ogden, Utah.....	-	2	2	-
Cleveland, Ohio.....	12	12	14	14	Phoenix, Ariz.....	6	6	4	4
Columbus, Ohio.....	5	14	4	9	Pueblo, Colo.....	2	2	1	1*
Dayton, Ohio.....	7	8	8	6	Salt Lake City, Utah.....	3	7	6	1
Detroit, Mich.....	19	20	21	17	Tucson, Ariz.....	1	-	3	3
Evansville, Ind.....	-	1	3	-	<b>PACIFIC:</b>				
Flint, Mich.....	5	5	6	2	Berkeley, Calif.....	1	-	1	-
Fort Wayne, Ind.....	1	1	3	3	Fresno, Calif.....	11	3	6	7
Gary, Ind.....	4	5	3	4	Glendale, Calif.....	-	-	1	-
Grand Rapids, Mich.....	7	2	2	4	Honolulu, Hawaii.....	4	5	2	7
Indianapolis, Ind.....	8	8	12	7	Long Beach, Calif.....	5	5	5	5*
Madison, Wis.....	7	1	2	1	Los Angeles, Calif.....	27	36	31	39
Milwaukee, Wis.....	12	28	5	8	Oakland, Calif.....	2	7	11	5
Peoria, Ill.....	1	2	2	5	Pasadena, Calif.....	1	2	1	1*
Rockford, Ill.....	2	1	3	-	Portland, Oreg.....	5	7	7	5
South Bend, Ind.....	1	4	1	3	Sacramento, Calif.....	5	5	3	7
Toledo, Ohio.....	4	3	6	1	San Diego, Calif.....	16	7	17	4
Youngstown, Ohio.....	2	-	1	2	San Francisco, Calif.....	9	13	6	10*
					San Jose, Calif.....	1	2	1	4
<b>WEST NORTH CENTRAL:</b>					Seattle, Wash.....	7	11	7	12
Des Moines, Iowa.....	3	2	2	-	Spokane, Wash.....	2	2	2	6
Duluth, Minn.....	-	2	2	1	Tacoma, Wash.....	4	1	2	2
Kansas City, Kans.....	4	3	4	3					
Kansas City, Mo.....	7	6	7	10	San Juan, P.R.....	3	2	2	(---)
Lincoln, Nebr.....	2	3	2	-					
Minneapolis, Minn.....	6	7	9	8					
Omaha, Nebr.....	8	2	6	5					
St. Louis, Mo.....	12	9	13	9					
St. Paul, Minn.....	6	3	7	3					
Wichita, Kans.....	4	3	4	3					

<sup>c</sup>Current Week Mortality for 108 Selected Cities

4(A) Total Mortality, all ages.....	12,028
4(B) Pneumonia-Influenza Deaths, all ages.....	550
4(C) Total Deaths under 1 Year of Age.....	740
4(D) Total Deaths, Persons 65 years and over.....	6,743

\*Estimate - based on average percent of divisional total.  
Totals for previous weeks include reported corrections.

NOTE: All deaths by place of occurrence.

## INTERNATIONAL NOTES - QUARANTINE MEASURES

## Influenza - Japan

Preliminary reports from the Japanese Influenza Center in Tokyo suggest that the influenza B virus recently recovered from outbreaks on the island of Kyushu, is not similar to the B/Taiwan/62 strain. It appears to resemble more closely strains isolated from influenza B outbreaks in Japan in 1961. Further studies, aimed at a more complete characterization of this virus, are now in progress.

(Reported by Hideo Fukumi, M.D., Chief, Japanese Influenza Center, Tokyo.)

## Immunization Information for International Travel - Public Health Service Publication No. 384, 1963-64 Edition

## Section 5

## OCEANIA

Australia, page 63

Delete the information under smallpox and insert:

**Smallpox** - Except British Solomon Islands, Fiji, Nauru, New Zealand, Norfolk Island, Ocean Island, Australian Territory of Papua and New Guinea, provided travelers have not been outside these areas for at least 14 days before arrival and these areas are free of smallpox. Australia reserves the right, in respect of arrivals from other areas, to isolate any person who arrives by air without smallpox vaccination certificate and refuses to be vaccinated. The certificate is not required from children 1 year of age.

**Isolation** - Under the Australian Quarantine Act, carriers are responsible for expenses of isolation of all travellers who disembark and: (a) come from a cholera infected area or an area mentioned above in the note on cholera within 5 days and do not possess a cholera vaccination certificate; or (b) come from a yellow-fever infected area within 6 days and do not possess a yellow-fever vaccination certificate; or (c) arrive by air without smallpox vaccination certificate and refuse to be vaccinated on arrival.

The Morbidity and Mortality Weekly Report, with a circulation of 10,500 is published by the Communicable Disease Center, Atlanta, Georgia.

Chief, Communicable Disease Center	James L. Goddard, M.D.
Chief, Epidemiology Branch	A. D. Langmuir, M.D.
Chief, Statistics Section	R. E. Serfling, Ph.D.
Asst. Chief, Statistics Section	I. L. Sherman, M.S.
Chief, Surveillance Section	D. A. Henderson, M.D.
Editor, MMWR	L. K. Altman, M.D.

In addition to the established procedures for reporting morbidity and mortality, the Communicable Disease Center welcomes accounts of interesting outbreaks or cases. Such accounts should be addressed to:

Lawrence K. Altman, M.D., Editor  
Morbidity and Mortality Weekly Report  
Communicable Disease Center  
Atlanta, Georgia 30333

Notes: These provisional data are based on weekly telegrams to the Communicable Disease Center by the individual State health departments.

Symbols: --- Data not available  
Quantity zero

Procedures for construction of various mortality curves may be obtained from Statistics Section, Communicable Disease Center, Public Health Service, U. S. Department of Health, Education, and Welfare, Atlanta, Georgia 30333.

Library  
81  
7 61  
CDC

U. S. DEPARTMENT OF  
HEALTH, EDUCATION, AND WELFARE  
PUBLIC HEALTH SERVICE  
Communicable Disease Center  
Atlanta, Georgia 30333  
Official Business



POSTAGE AND FEES PAID  
U. S. DEPARTMENT OF H. E. W.