

eFigure Title

Acute ischemic stroke hospitalization rates/10,000 hospitalizations by age and Sex, 1995-1996–011-2012

Contents of Online-only Supplemental Material

Supplemental eTable 1 **Definitions of Risk Factors (ICD-9-CM)**

Supplemental eFigure **Acute Ischemic Stroke hospitalization Rates/10,000 Hospitalizations by Age and Sex, 1995-1996—2011-2012**

Supplemental eTable 2 **Ischemic Stroke Hospitalization Rates/10,000 hospitalizations by Age and Sex, 1995-96 – 2011-12**

Supplemental eTable 3 **Discharge Destination for Acute Ischemic Stroke Admissions, National Inpatient Sample (NIS) 2003-2012**

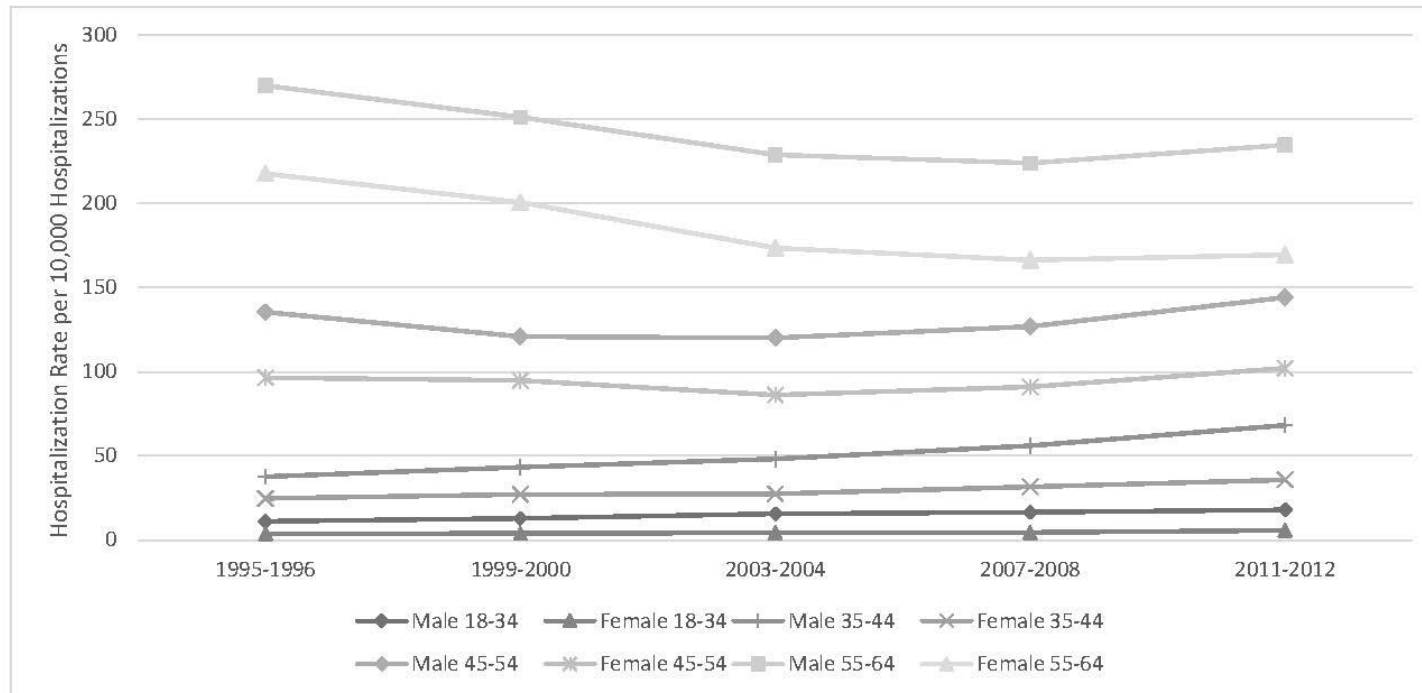
Supplemental eTable 4 **Discharge Destination for Intracerebral Hemorrhage Admissions, National Inpatient Sample (NIS) 2003-2012**

Supplemental eTable 5 **Discharge Destination for Subarachnoid Hemorrhage Admissions, National Inpatient Sample (NIS) 2003-2012**

Supplemental eTable 1 **Definitions of Risk Factors (ICD-9-CM)**

| Risk Factor | ICD-9-CM Codes |
|----------------------------|---|
| Hypertension | 401.1, 401.9 |
| Lipid disorders | 272.0, 272.1, 272.2, 272.3, 272.4 |
| Diabetes | 249, 250 |
| Tobacco use | 305.1 |
| Obesity | 278.00, 278.01 |
| Other drug abuse | 292, 304, 305.2, 305.3, 305.4, 305.5, 305.6, 305.7, 305.8, 305.9, 648.3 |
| Atrial fibrillation | 427.3 |
| Arteriovenous malformation | 747.81 |

Supplemental eFigure Acute Ischemic Stroke hospitalization Rates/10,000 Hospitalizations by Age and Sex, 1995-1996—2011-2012



Supplemental eTable 2 **Ischemic Stroke Hospitalization Rates/10,000 hospitalizations by Age and Sex, 1995-96 – 2011-12^a**

| | 1995-1996 | 1999-2000 | 2003-2004 | 2007-2008 | 2011-2012 |
|--------------|-----------|-----------|-----------|-----------|-----------|
| Male 18-34 | 11.2 | 13.0 | 15.6 | 16.5 | 18 |
| Female 18-34 | 3.8 | 4.0 | 4.4 | 4.5 | 5.8 |
| Male 35-44 | 37.7 | 43.4 | 48.2 | 56 | 68.2 |
| Female 35-44 | 24.8 | 27.2 | 27.5 | 31.6 | 35.8 |
| Male 45-54 | 135.4 | 120.9 | 120.1 | 126.9 | 144.1 |
| Female 45-54 | 96.4 | 94.8 | 86.2 | 91.1 | 102.1 |
| Male 55-64 | 269.9 | 251.2 | 228.8 | 223.9 | 234.6 |
| Female 55-64 | 217.6 | 200.6 | 173.4 | 166.3 | 169.5 |

^a Data for eFigure

Supplemental eTable 3 Discharge Destination for Acute Ischemic Stroke Admissions, National Inpatient Sample (NIS) 2003-2012

| Discharge destination | 2003-04 % (S.E) | 2005-06 % (S.E) | 2007-08 % (S.E) | 2009-10 % (S.E) | 2011-12 % (S.E) | p-value for trend |
|---------------------------------|--------------------|--------------------|--------------------|--------------------|--------------------|-------------------|
| Age 18-34 Years old | | | | | | |
| Home/home health care | 69.9 (1.1) | 70.6 (1.2) | 69.3 (1.1) | 71.0 (1.1) | 68.1 (1.1) | 0.34 |
| Transfer to short term hospital | 5.3 (0.5) | 5.3 (0.5) | 6.6 (0.7) | 6.0 (0.6) | 6.3 (0.6) | 0.14 |
| Transfer to other ^a | 18.7 (1.0) | 19.2 (1.1) | 19.1 (1.0) | 18.0 (0.9) | 20.3 (1.0) | 0.55 |
| Died in hospital | 3.7 (0.5) | 2.8 (0.4) | 2.5 (0.4) | 3.0 (0.4) | 2.6 (0.3) | 0.12 |
| Age 35-44 Years old | | | | | | |
| Home/home health care | 70.2 (0.7) | 70.0 (0.7) | 69.3 (0.7) | 70.5 (0.8) | 70.8 (0.6) | 0.42 |
| Transfer to short term hospital | 4.3 (0.3) | 4.1 (0.3) | 4.7 (0.4) | 4.8 (0.4) | 4.6 (0.3) | 0.21 |
| Transfer to other ^a | 20.3 (0.7) | 20.7 (0.6) | 21.0 (0.6) | 20.2 (0.7) | 20.0 (0.6) | 0.58 |
| Died in hospital | 2.9 (0.2) | 2.8 (0.2) | 2.7 (0.2) | 2.5 (0.2) | 2.2 (0.2) | 0.01 |
| Age 45-54 Years old | | | | | | |
| Home/home health care | 70.5 (0.5) | 70.2 (0.5) | 70.3 (0.5) | 69.5 (0.5) | 69.3 (0.4) | 0.03 |
| Transfer to short term hospital | 3.1 (0.2) | 3.5 (0.2) | 4.0 (0.2) | 3.9 (0.2) | 3.5 (0.2) | 0.04 |
| Transfer to other ^a | 21.5 (0.4) | 22.1 (0.4) | 21.6 (0.4) | 22.4 (0.5) | 23.3 (0.4) | 0.004 |
| Died in hospital | 3.0 (0.1) | 2.5 (0.1) | 2.4 (0.1) | 2.3 (0.1) | 2.2 (0.1) | <0.001 |
| Age 55-64 Years old | | | | | | |
| Home/home health care | 70.5 (0.4) | 71.0 (0.4) | 70.8 (0.4) | 69.2 (0.4) | 68.0 (0.3) | <0.001 |
| Transfer to short term hospital | 2.7 (0.1) | 2.8 (0.1) | 3.3 (0.2) | 3.3 (0.2) | 3.1 (0.1) | <0.001 |
| Transfer to other ^a | 22.8 (0.4) | 22.7 (0.4) | 22.6 (0.4) | 24.0 (0.4) | 25.6 (0.3) | <0.001 |
| Died in hospital | 2.8 (0.1) | 2.7 (0.1) | 2.3 (0.1) | 2.4 (0.1) | 2.2 (0.1) | <0.001 |

^a Includes skilled nursing facility, intermediate care facility, long-term care facility, or rehabilitation facility

Supplemental eTable 4 Discharge Destination for Intracerebral Hemorrhage Admissions, National Inpatient Sample (NIS) 2003-2012

| Discharge destination | 2003-04 % (S.E) | 2005-06 % (S.E) | 2007-08 % (S.E) | 2009-10 % (S.E) | 2011-12 % (S.E) | p-value for trend |
|---------------------------------|--------------------|--------------------|--------------------|--------------------|--------------------|-------------------|
| Age 18-34 Years old | | | | | | |
| Home/home health care | 46.5 (2.3) | 50.3 (2.4) | 53.9 (2.3) | 54.6 (2.1) | 50.7 (2.1) | 0.08 |
| Transfer to short term hospital | 8.2 (1.3) | 7.2 (1.1) | 8.6 (1.3) | 7.7 (1.3) | 6.2 (1.1) | 0.28 |
| Transfer to other ^a | 20.6 (2.0) | 23.2 (2.3) | 20.2 (1.8) | 21.0 (1.9) | 25.4 (2.0) | 0.18 |
| Died in hospital | 22.3 (1.8) | 18.1 (1.6) | 16.2 (1.6) | 16.2 (1.6) | 16.7 (1.5) | 0.009 |
| Age 35-44 Years old | | | | | | |
| Home/home health care | 40.2 (1.4) | 40.5 (1.5) | 41.9 (1.6) | 40.2 (1.5) | 39.9 (1.5) | 0.84 |
| Transfer to short term hospital | 6.7 (0.8) | 6.3 (0.8) | 7.0 (0.9) | 6.4 (0.9) | 6.1 (0.8) | 0.64 |
| Transfer to other ^a | 27.1 (1.3) | 29.0 (1.3) | 29.9 (1.5) | 32.2 (1.7) | 33.6 (1.4) | 0.002 |
| Died in hospital | 24.0 (1.3) | 23.0 (1.3) | 20.0 (1.1) | 19.4 (1.1) | 19.4 (1.2) | 0.002 |
| Age 45-54 Years old | | | | | | |
| Home/home health care | 34.1 (1.0) | 35.5 (1.2) | 37.9 (1.0) | 35.5 (1.1) | 35.3 (0.9) | 0.44 |
| Transfer to short term hospital | 5.4 (0.5) | 4.6 (0.4) | 5.0 (0.7) | 5.5 (0.5) | 4.7 (0.5) | 0.70 |
| Transfer to other ^a | 29.4 (0.9) | 32.3 (1.0) | 34.2 (1.0) | 36.0 (1.2) | 37.2 (0.9) | <0.001 |
| Died in hospital | 29.1 (0.8) | 26.6 (0.8) | 22.1 (0.8) | 22.3 (0.7) | 21.6 (0.7) | <0.001 |
| Age 55-64 Years old | | | | | | |
| Home/home health care | 31.6 (0.8) | 32.2 (0.8) | 33.3 (0.9) | 32.8 (1.0) | 32.2 (0.7) | 0.46 |
| Transfer to short term hospital | 4.9 (0.4) | 5.1 (0.4) | 6.0 (0.7) | 4.5 (0.4) | 4.5 (0.4) | 0.26 |
| Transfer to other ^a | 34.3 (0.9) | 36.3 (0.9) | 36.4 (1.0) | 38.4 (1.1) | 39.8 (0.9) | <0.001 |
| Died in hospital | 27.8 (0.7) | 25.8 (0.8) | 23.8 (0.7) | 23.4 (0.7) | 22.9 (0.6) | <0.001 |

^a Includes skilled nursing facility, intermediate care facility, long-term care facility, or rehabilitation facility

Supplemental eTable 5 Discharge Destination for Subarachnoid Hemorrhage Admissions, National Inpatient Sample (NIS) 2003-2012

| Discharge destination | 2003-04 % (S.E) | 2005-06 % (S.E) | 2007-08 % (S.E) | 2009-10 % (S.E) | 2011-12 % (S.E) | p-value for trend |
|---------------------------------|--------------------|--------------------|--------------------|--------------------|--------------------|-------------------|
| Age 18-34 Years old | | | | | | |
| Home/home health care | 61.7 (2.0) | 55.9 (2.1) | 61.7 (2.1) | 58.0 (2.0) | 64.3 (2.0) | 0.27 |
| Transfer to short term hospital | 10.2 (1.4) | 12.7 (1.5) | 10.7 (1.5) | 8.4 (1.2) | 6.4 (1.1) | 0.007 |
| Transfer to other ^a | 13.3 (1.2) | 14.5 (1.5) | 16.4 (1.5) | 18.5 (1.7) | 16.5 (1.4) | 0.03 |
| Died in hospital | 13.6 (1.3) | 15.9 (1.4) | 10.2 (1.1) | 12.8 (1.3) | 11.2 (1.3) | 0.09 |
| Age 35-44 Years old | | | | | | |
| Home/home health care | 54.0 (1.6) | 54.2 (1.7) | 59.2 (1.6) | 58.0 (1.7) | 59.3 (1.5) | 0.004 |
| Transfer to short term hospital | 10.2 (1.1) | 11.9 (1.3) | 8.8 (1.1) | 8.3 (1.1) | 8.5 (1.1) | 0.08 |
| Transfer to other ^a | 18.5 (1.3) | 18.0 (1.1) | 16.9 (1.1) | 18.0 (1.3) | 17.4 (1.2) | 0.53 |
| Died in hospital | 16.2 (0.9) | 14.9 (1.0) | 14.4 (1.1) | 14.7 (1.1) | 13.7 (0.9) | 0.06 |
| Age 45-54 Years old | | | | | | |
| Home/home health care | 47.6 (1.4) | 48.5 (1.3) | 52.6 (1.3) | 51.4 (1.5) | 53.3 (1.3) | <0.001 |
| Transfer to short term hospital | 10.7 (1.0) | 11.6 (1.1) | 11.9 (1.1) | 9.5 (0.9) | 7.3 (0.7) | 0.001 |
| Transfer to other ^a | 20.5 (1.0) | 20.9 (1.0) | 18.1 (1.0) | 21.6 (1.2) | 22.9 (1.0) | 0.08 |
| Died in hospital | 20.4 (0.9) | 18.4 (0.8) | 16.7 (0.9) | 16.7 (0.8) | 15.9 (0.8) | <0.001 |
| Age 55-64 Years old | | | | | | |
| Home/home health care | 39.7 (1.4) | 40.4 (1.3) | 42.4 (1.4) | 44.5 (1.5) | 45.1 (1.1) | <0.001 |
| Transfer to short term hospital | 10.9 (1.0) | 10.6 (0.9) | 11.9 (1.3) | 9.0 (0.9) | 7.3 (0.7) | 0.002 |
| Transfer to other ^a | 26.8 (1.3) | 26.6 (1.2) | 25.9 (1.3) | 26.2 (1.2) | 29.7 (1.0) | 0.17 |
| Died in hospital | 21.4 (1.0) | 22.0 (0.9) | 19.4 (1.0) | 20.0 (0.9) | 17.7 (0.9) | 0.001 |

^a Includes skilled nursing facility, intermediate care facility, long-term care facility, or rehabilitation facility