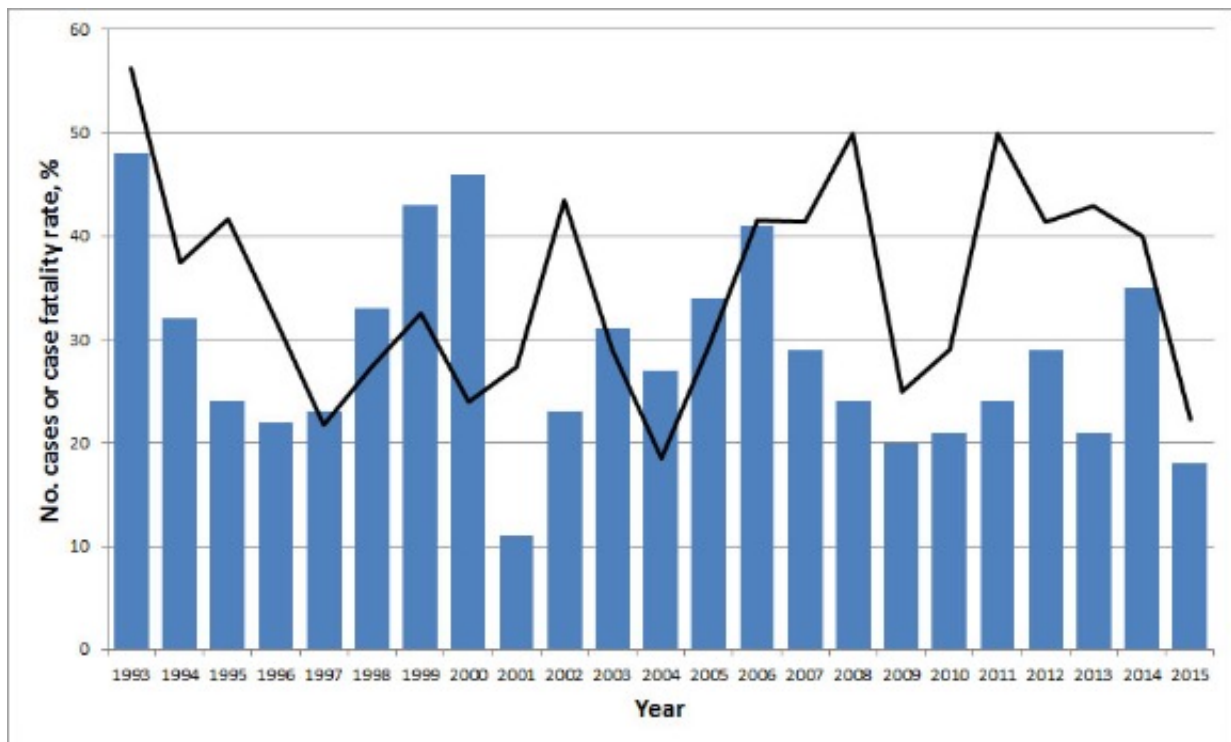


## Annual U.S. HPS Cases and Case-Fatality, 1993-2015 | Hantavirus | DHCPP | CDC

### Annual U.S. HPS Cases and Case-Fatality, 1993-2015



Note: Number of Cases (Bars) | Number of Cases-Fatality (Line)

#### Year HPS Cases Fatal Cases Case Fatality

<b>1993</b>	48	27	56%
<b>1994</b>	32	12	38%
<b>1995</b>	24	10	42%
<b>1996</b>	22	7	32%
<b>1997</b>	23	5	22%
<b>1998</b>	33	9	27%
<b>1999</b>	43	14	33%

<b>2000</b>	46	11	24%
<b>2001</b>	11	3	27%
<b>2002</b>	23	10	43%
<b>2003</b>	31	9	29%
<b>2004</b>	27	5	19%
<b>2005</b>	34	10	29%
<b>2006</b>	41	17	41%
<b>2007</b>	29	12	41%
<b>2008</b>	24	12	50%
<b>2009</b>	20	5	25%
<b>2010</b>	21	6	29%
<b>2011</b>	24	12	50%
<b>2012</b>	29	12	41%
<b>2013</b>	21	9	43%
<b>2014</b>	35	14	40%
<b>2015</b>	18	4	22%
<b>Total</b>	659	235	36%