

2017 Democratic Republic of the Congo, Bas Uélé District | Ebola Hemorrhagic Fever | CDC

2017 Democratic Republic of the Congo, Bas Uélé District

Outbreak Update

On May 11, 2017, the Ministry of Public Health of the Democratic Republic of the Congo notified international public health agencies of a cluster of suspected cases of Ebola Virus Disease (EVD) in the Likati health zone of the province of Bas Uélé. The report mentioned 8 cases, including two deaths, with a third death reported on May 12. Testing of samples was conducted by the Institut National de Recherche Biomedicale (INRB) in Kinshasa, with two samples testing positive for Ebola Zaire by RT-PCR. Teams from international agencies, including CDC, WHO, MSF (Doctors without Borders), and others, supported the Ministry of Public Health's epidemiologic, diagnostic, clinical, and communications efforts to respond to the outbreak. The response faced challenging logistical obstacles, including the remoteness of the area and limited services. Mobile diagnostic laboratories provided testing of samples in the affected areas. Following a period of no new laboratory-confirmed cases, the Ministry of Public Health announced that a period of time equal to two incubation periods for Ebolavirus, or two times 21, or 42, days, would start on May 17, 2017. If no cases of EVD are confirmed by the end of this period, the outbreak will be declared over.

Case Counts

As of June 8, 2017

Total cases (probable or confirmed): 8

Nambwa: 2 probable, 4 confirmed

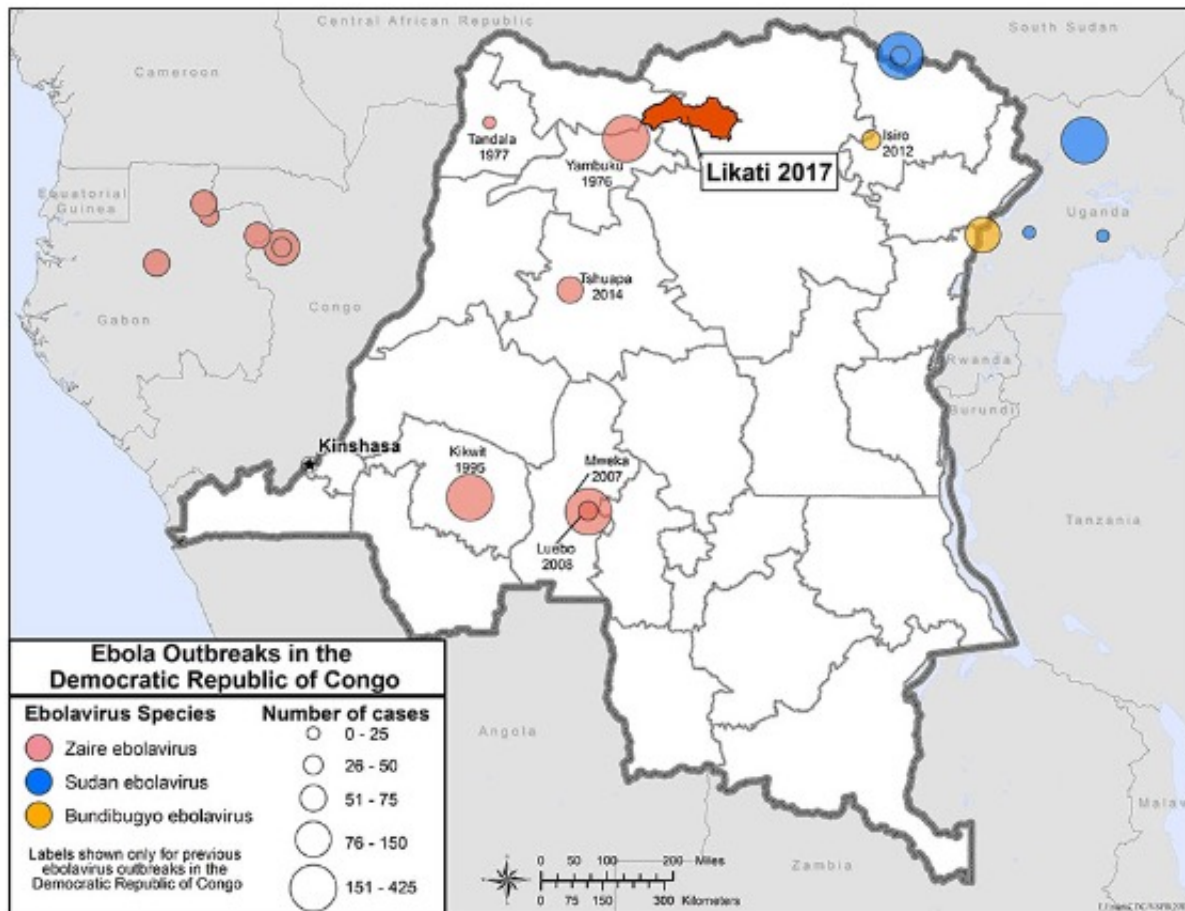
Ngayi: 1 probable

Mabongo: 1 confirmed

Laboratory-confirmed cases: 3

Deaths: 4

Contacts being followed: 0



The map shows the country of Democratic Republic of Congo, located in Central Africa, and indicates outbreaks of Ebola that have happened there. The map indicates outbreaks of Ebola in Yambuku in 1976, Tandala in 1977, Kikwit in 1995, Mweka in 2007, Luebo in 2008, Isiro in 2012, Tshuapa in 2014, and, presently, in Likati in 2017. All outbreaks were of the Ebola Zaire subtype, except for the Isiro outbreak, with Ebola Bundibugyo. All outbreaks of Ebola Zaire were between 51-75 cases; the Isiro outbreak was from 26-50 cases.