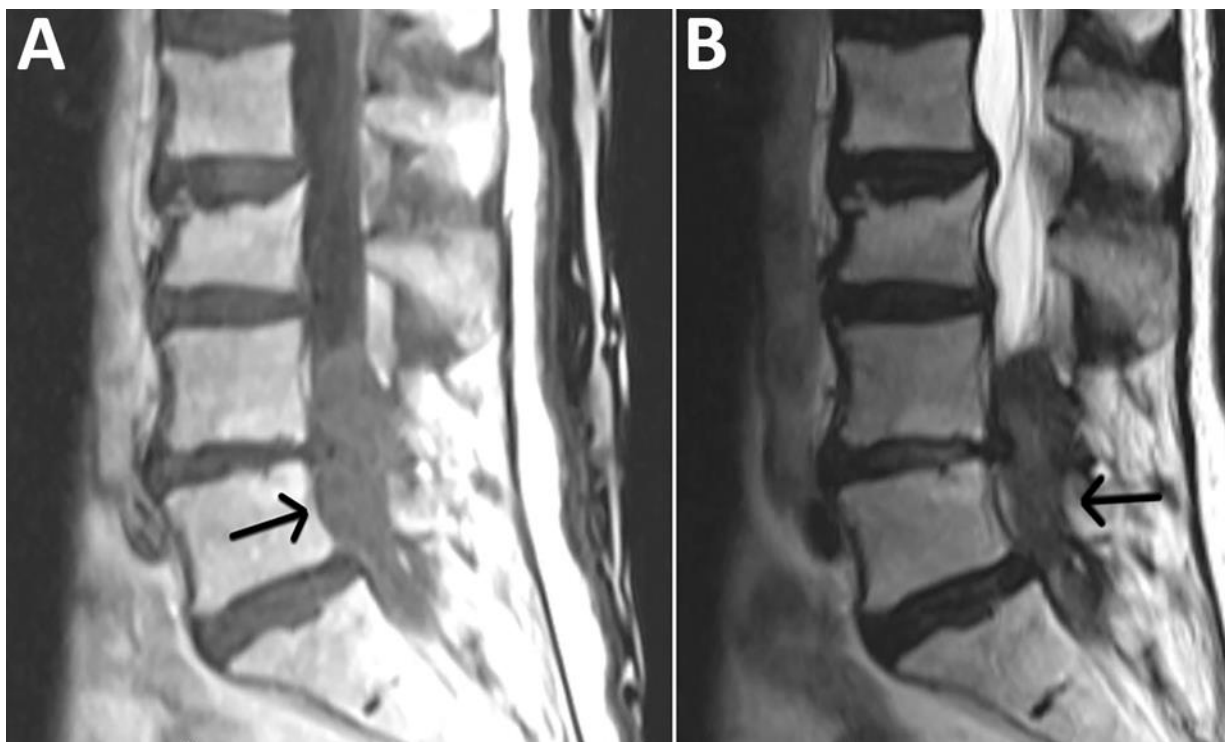


Fungal Contamination of Methylprednisolone Causing Recurrent Lumbosacral Intradural Abscess

Technical Appendix



Technical Appendix Figure. A) Contrast-enhanced lumbar magnetic resonance image of T1 demonstrated a homogeneously enhancing intradural mass spanning from L4 to the sacrum. B) Corresponding T2 hypointense signal clearly demarking intradural location.