

# Morbidity and Mortality

Weekly Report

U. S. DEPARTMENT OF HEALTH, EDUCATION, AND WELFARE

PUBLIC HEALTH SERVICE

Prepared by the **COMMUNICABLE DISEASE CENTER** 634-5131

For release August 16, 1963

ATLANTA, GEORGIA 30333

Vol. 12, No. 32

## PROVISIONAL INFORMATION ON SELECTED NOTIFIABLE DISEASES IN THE UNITED STATES AND ON DEATHS IN SELECTED CITIES FOR WEEK ENDED AUGUST 10, 1963

**POLIOMYELITIS** - The 12 cases of poliomyelitis, 11 paralytic, reported for the week ending August 10, bring to a total of 153 the number of cases reported thus far in 1963. This figure remains well below one-half the level reported in 1962.

Five cases, all paralytic, were reported from Alabama. South Carolina and Illinois reported two cases each. Single cases occurred in five other States.

All of the Alabama cases have occurred in the north-west part of the State, with two cases in Lawrence County, and one each in Cullman, Madison, and Shelby Counties. Lawrence and Cullman Counties both border on Walker County, where 7 cases, with Type I poliovirus recovered from 2, have occurred (See MMWR, Vol. 12, pages 221, 229, 245, and 253).

Approximately 44,000 Walker County residents (about

85% of the population) have received type I oral poliomyelitis vaccine in a mass immunization program, utilizing vaccine from the Communicable Disease Center epidemic reserve. Plans are currently being formulated to give vaccine in the counties contiguous to Walker County where poliomyelitis cases have occurred.

### Poliomyelitis (Cumulated Weekly) 1st Through 32nd Week

|  | 1963 | 1962 | 1961 | 1960  | 1959  |
|--|------|------|------|-------|-------|
| Paralytic  | 128  | 275  | 274  | 777   | 1,892 |
| Total  | 153  | 364  | 413  | 1,074 | 2,924 |
| Poliomyelitis (Six Week Totals) 27th Through 32nd Week |      |      |      |       |       |
| Paralytic  | 60   | 114  | 119  | 431   | 1,198 |
| Total  | 73   | 157  | 174  | 605   | 1,898 |

Table 1. CASES OF SPECIFIED NOTIFIABLE DISEASES: UNITED STATES

(Cumulative totals include revised and delayed reports through previous week)

| Disease  | 32nd Week          |                    |                       | Cumulative     |         |                       |
|--|--------------------|--------------------|-----------------------|----------------|---------|-----------------------|
|  | Ended              | Ended              | Median<br>1958 - 1962 | First 32 weeks |         | Median<br>1958 - 1962 |
|  | August 10,<br>1963 | August 11,<br>1962 |                       | 1963           | 1962    |                       |
| Aseptic meningitis.....                                    | 57                 | 122                | ---                   | 911            | 1,074   | ---                   |
| Brucellosis .....  | 9                  | 7                  | 11                    | 225            | 257     | 481                   |
| Diphtheria .....   | 1                  | 6                  | 9                     | 153            | 240     | 378                   |
| Encephalitis, infectious.....                              | 19                 | 46                 | 52                    | 958            | 987     | 999                   |
| Hepatitis, infectious and serum...                         | 802                | 734                | 645                   | 27,597         | 36,160  | 22,896                |
| Measles.....   | 1,528              | 1,660              | 1,746                 | 354,109        | 437,864 | 390,448               |
| Meningococcal infections .....                             | 22                 | 34                 | 30                    | 1,636          | 1,418   | 1,534                 |
| Poliomyelitis, total.....                                  | 12                 | 30                 | 127                   | 153            | 364     | 1,076                 |
| Paralytic.....   | 11                 | 21                 | 97                    | 128            | 275     | 776                   |
| Nonparalytic.....  | -                  | 9                  | 24                    | 15             | 63      | 225                   |
| Unspecified.....   | 1                  | -                  | 6                     | 10             | 26      | 75                    |
| Streptococcal sore throat<br>and Scarlet fever .....       | 3,363              | 3,426              | ---                   | 236,002        | 217,229 | ---                   |
| Tetanus .....  | 7                  | 9                  | ---                   | 152            | 155     | ---                   |
| Tularemia .....  | 5                  | 8                  | ---                   | 175            | 185     | ---                   |
| Typhoid fever .....  | 15                 | 18                 | 29                    | 263            | 333     | 450                   |
| Typhus fever, tick-borne,<br>(Rocky Mountain spotted)..... | 6                  | 17                 | ---                   | 110            | 152     | ---                   |
| Rabies in Animals .....                                    | 48                 | 60                 | 60                    | 2,423          | 2,602   | 2,449                 |

Table 2. NOTIFIABLE DISEASES OF LOW FREQUENCY

|   |           |                       |            |
|---|-----------|-----------------------|------------|
| Anthrax:  | Cum.<br>2 | Psittacosis: Ill. - 1 | Cum.<br>39 |
| Botulism:   | 5         | Rabies in Man:        | -          |
| Malaria: N.Y. - 1, Md. - 1, Hawaii - 1, S. C. - 1 | 57        | Smallpox:             | -          |
| Plague:   | -         | Typhus, murine:       | 14         |

Figures for current week exclude missing report from Alaska

## SUMMARY OF REPORTED CASES OF INFECTIOUS SYPHILIS

JULY 1963 AND JULY 1962

CASES OF PRIMARY AND SECONDARY SYPHILIS: By Reporting Area July 1963 and July 1962 - Provisional Data

| Reporting Area            | July |      | Cumulative<br>Jan - July |       | Reporting Area          | July  |       | Cumulative<br>Jan - July |        |
|---------------------------|------|------|--------------------------|-------|-------------------------|-------|-------|--------------------------|--------|
|                           | 1963 | 1962 | 1963                     | 1962  |                         | 1963  | 1962  | 1963                     | 1962   |
| NEW ENGLAND.....          | 45   | 37   | 260                      | 311   | EAST SOUTH CENTRAL..... | 139   | 112   | 903                      | 663    |
| Maine.....                | 0    | 0    | 3                        | 6     | Kentucky.....           | 19    | 14    | 85                       | 77     |
| New Hampshire.....        | 1    | 1    | 5                        | 7     | Tennessee.....          | 33    | 40    | 234                      | 187    |
| Vermont.....              | 1    | 0    | 2                        | 0     | Alabama.....            | 64    | 48    | 406                      | 351    |
| Massachusetts.....        | 37   | 25   | 156                      | 215   | Mississippi.....        | 23    | 10    | 178                      | 48     |
| Rhode Island.....         | 0    | 3    | 8                        | 15    |                         |       |       |                          |        |
| Connecticut.....          | 6    | 8    | 86                       | 68    | WEST SOUTH CENTRAL..... | 247   | 291   | 1,663                    | 1,702  |
|                           |      |      |                          |       | Arkansas.....           | 13    | 31    | 131                      | 137    |
| MIDDLE ATLANTIC.....      | 462  | 480  | 3,416                    | 3,278 | Louisiana.....          | 48    | 121   | 348                      | 736    |
| Upstate New York.....     | 70   | 53   | 367                      | 324   | Oklahoma.....           | 11    | 6     | 104                      | 61     |
| New York City.....        | 226  | 288  | 1,892                    | 1,849 | Texas.....              | 175   | 133   | 1,080                    | 768    |
| Pa. (Excl. Phila.).....   | 13   | 17   | 87                       | 92    |                         |       |       |                          |        |
| Philadelphia.....         | 53   | 57   | 425                      | 412   | MOUNTAIN.....           | 31    | 17    | 274                      | 203    |
| New Jersey.....           | 100  | 65   | 645                      | 601   | Montana.....            | 2     | 1     | 5                        | 1      |
|                           |      |      |                          |       | Idaho.....              | 3     | 0     | 4                        | 1      |
| EAST NORTH CENTRAL.....   | 143  | 158  | 1,117                    | 976   | Wyoming.....            | 1     | 0     | 6                        | 0      |
| Ohio.....                 | 31   | 21   | 216                      | 169   | Colorado.....           | 1     | 1     | 23                       | 41     |
| Indiana.....              | 6    | 11   | 36                       | 51    | New Mexico.....         | 9     | 5     | 70                       | 34     |
| Downstate Illinois.....   | 8    | 12   | 71                       | 83    | Arizona.....            | 10    | 8     | 116                      | 84     |
| Chicago.....              | 73   | 81   | 524                      | 479   | Utah.....               | 1     | 0     | 12                       | 2      |
| Michigan.....             | 21   | 29   | 235                      | 165   | Nevada.....             | 4     | 2     | 38                       | 40     |
| Wisconsin.....            | 4    | 4    | 35                       | 29    |                         |       |       |                          |        |
|                           |      |      |                          |       | PACIFIC.....            | 226   | 120   | 1,324                    | 941    |
| WEST NORTH CENTRAL.....   | 29   | 32   | 276                      | 214   | Washington.....         | 15    | 6     | 74                       | 19     |
| Minnesota.....            | 6    | 9    | 46                       | 35    | Oregon.....             | 4     | 3     | 32                       | 28     |
| Iowa.....                 | 0    | 1    | 18                       | 12    | California.....         | 204   | 110   | 1,201                    | 881    |
| Missouri.....             | 17   | 18   | 127                      | 109   | Alaska.....             | 0     | 1     | 3                        | 4      |
| North Dakota.....         | 0    | 0    | 4                        | 2     | Hawaii.....             | 3     | 0     | 14                       | 9      |
| South Dakota.....         | 1    | 0    | 18                       | 18    |                         |       |       |                          |        |
| Nebraska.....             | 2    | 1    | 29                       | 6     | U. S. TOTAL.....        | 1,890 | 1,684 | 12,764                   | 11,547 |
| Kansas.....               | 3    | 3    | 34                       | 32    |                         |       |       |                          |        |
|                           |      |      |                          |       | TERRITORIES.....        | 44    | 35    | 452                      | 245    |
| SOUTH ATLANTIC.....       | 568  | 437  | 3,531                    | 3,259 | Puerto Rico.....        | 44    | 30    | 441                      | 230    |
| Delaware.....             | 7    | 4    | 27                       | 22    | Virgin Islands.....     | 0     | 5     | 11                       | 15     |
| Maryland.....             | 67   | 41   | 333                      | 310   |                         |       |       |                          |        |
| District of Columbia..... | 44   | 61   | 395                      | 430   |                         |       |       |                          |        |
| Virginia.....             | 25   | 31   | 176                      | 231   |                         |       |       |                          |        |
| West Virginia.....        | 2    | 6    | 26                       | 27    |                         |       |       |                          |        |
| North Carolina.....       | 92   | 58   | 531                      | 370   |                         |       |       |                          |        |
| South Carolina.....       | 95   | 50   | 419                      | 446   |                         |       |       |                          |        |
| Georgia.....              | 103  | 78   | 603                      | 547   |                         |       |       |                          |        |
| Florida.....              | 133  | 108  | 1,021                    | 876   |                         |       |       |                          |        |

Note: Cumulative Totals include revised and delayed reports through previous months.

**INFECTIOUS SYPHILIS** - One thousand eight hundred and ninety cases of primary and secondary infectious syphilis were reported for the month of July 1963. This represents an increase of 12% as compared to July 1962, when 1,684 cases were reported. This rise is consistent with the upward trend of reported cases of infectious syphilis, a trend which has been evident in the United States for the past six years. The national per annum increases during the past two years have been about 10-12%.

With the exception of the New England and the West-South Central States, all geographic regions reported more cases during the period January-July 1963, than for the similar period of 1962. The decrease in reports of infectious syphilis in the West-South Central States is accounted for primarily by Louisiana where the 348 cases reported during January-July 1963, is less than one-half the 736 cases reported for the same period during 1962.

EPIDEMIOLOGICAL REPORT

Staphylococcal Food Poisoning - Ohio

On April 18, 1963, two men, both of whom had eaten ham sandwiches and coffee at a small restaurant in an Ohio town, suddenly developed marked pain and vomiting 1½ hours following lunch. On April 19, a third man developed similar symptoms 4½ hours following ingestion of a ham sandwich at this same restaurant. Two others, also known to have eaten ham sandwiches April 19, did not develop illness. In addition, the five employees of this restaurant also consumed the ham on April 18 without becoming ill.

The ham served at these meals had been deboned and excess fat trimmed off before baking on the morning of April 18. Allowed to cool, it was sliced before serving. An undetermined number of sandwiches were prepared

from this ham, but no additional cases were uncovered on further investigation.

Samples of this ham as well as throat and stool cultures from all five employees were obtained for bacteriologic studies. Coagulase positive staphylococci, type 83A, were recovered both from the ham and the throat of one waitress. An untypable staphylococcus was cultured from another waitress' throat. Untypable staphylococci were recovered from the stools of four of the five employees.

The three men who became ill recovered rapidly, but no specimens were obtained for culture from them.

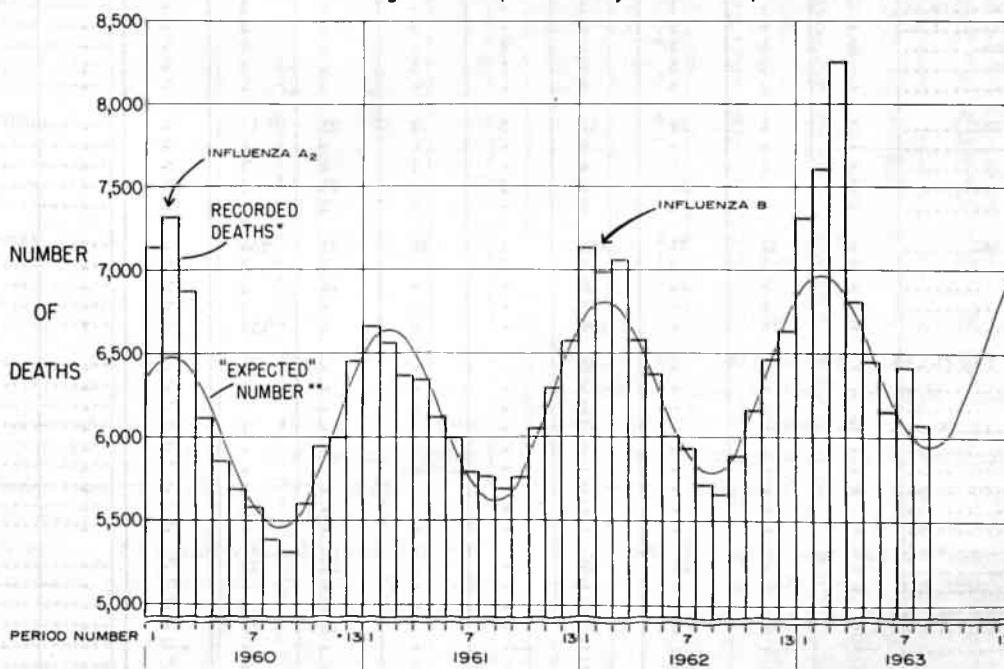
(Reported by Martha Laffey, RN, Findlay Health Commissioner; Division of Communicable Diseases and Division of Laboratories, Ohio Department of Health; and an EIS Officer from the Communicable Disease Center).

SUMMARY OF DEATHS AMONG PERSONS 65 YEARS AND OVER IN 108 U. S. CITIES

The weekly average number of deaths among persons 65 years and over in 108 cities for the four-week period ending August 10 was 6,070 as compared with an expected weekly average of 5,956.

|          | WEEK ENDING |       |       |       | 4 Week Total | Weekly Average |
|----------|-------------|-------|-------|-------|--------------|----------------|
|          | 7/20        | 7/27  | 8/3   | 8/10  |              |                |
| Observed | 6,197       | 6,141 | 6,217 | 5,725 | 24,280       | 6,070          |
| Expected | 5,982       | 5,959 | 5,944 | 5,937 | 23,822       | 5,956          |
| Excess   | 215         | 182   | 273   | -212  | 458          | 114            |

DEATHS AT AGE 65 AND OVER IN 108 U.S. CITIES  
Average number per week by four-week periods



\* BY PLACE OF OCCURRENCE

\*\* CALCULATED FROM 1957-1961 EXPERIENCE

## Morbidity and Mortality Weekly Report

Table 3. CASES OF SPECIFIED NOTIFIABLE DISEASES: UNITED STATES  
FOR WEEKS ENDED

AUGUST 10, 1963 AND AUGUST 11, 1962

| Area                    | Poliomyelitis, total cases |      |                           |      | Poliomyelitis, paralytic |      |                           |      | Poliomyelitis, nonparalytic |      | Aseptic Meningitis |      |
|-------------------------|----------------------------|------|---------------------------|------|--------------------------|------|---------------------------|------|-----------------------------|------|--------------------|------|
|                         | 32nd week                  |      | Cumulative First 32 weeks |      | 32nd week                |      | Cumulative First 32 weeks |      | 32nd week                   |      | 32nd week          |      |
|                         | 1963                       | 1962 | 1963                      | 1962 | 1963                     | 1962 | 1963                      | 1962 | 1963                        | 1962 | 1963               | 1962 |
| UNITED STATES.....      | 12                         | 30   | 153                       | 364  | 11                       | 21   | 128                       | 275  | -                           | 9    | 57                 | 122  |
| NEW ENGLAND.....        | -                          | -    | 1                         | 5    | -                        | -    | 1                         | 5    | -                           | -    | 2                  | 2    |
| Maine.....              | -                          | -    | -                         | -    | -                        | -    | -                         | -    | -                           | -    | -                  | -    |
| New Hampshire.....      | -                          | -    | -                         | -    | -                        | -    | -                         | -    | -                           | -    | -                  | -    |
| Vermont.....            | -                          | -    | -                         | -    | -                        | -    | -                         | -    | -                           | -    | -                  | -    |
| Massachusetts.....      | -                          | -    | 1                         | 4    | -                        | -    | 1                         | 4    | -                           | -    | 1                  | 1    |
| Rhode Island.....       | -                          | -    | -                         | -    | -                        | -    | -                         | -    | -                           | -    | 1                  | 1    |
| Connecticut.....        | -                          | -    | -                         | 1    | -                        | -    | -                         | 1    | -                           | -    | -                  | -    |
| MIDDLE ATLANTIC.....    | -                          | 2    | 37                        | 41   | -                        | 1    | 27                        | 27   | -                           | 1    | 3                  | 2    |
| New York.....           | -                          | 2    | 7                         | 37   | -                        | 1    | 5                         | 23   | -                           | 1    | 2                  | 2    |
| New Jersey.....         | -                          | -    | 1                         | 3    | -                        | -    | 1                         | 3    | -                           | -    | -                  | -    |
| Pennsylvania.....       | -                          | -    | 29                        | 1    | -                        | -    | 21                        | 1    | -                           | -    | 1                  | -    |
| EAST NORTH CENTRAL..... | 3                          | 5    | 23                        | 32   | 2                        | 5    | 15                        | 21   | -                           | -    | 12                 | 9    |
| Ohio.....               | -                          | -    | 7                         | 8    | -                        | -    | 3                         | 7    | -                           | -    | -                  | 5    |
| Indiana.....            | -                          | 1    | 2                         | 5    | -                        | 1    | 1                         | 4    | -                           | -    | 4                  | 1    |
| Illinois.....           | 2                          | 1    | 9                         | 12   | 2                        | 1    | 8                         | 5    | -                           | -    | 5                  | -    |
| Michigan.....           | -                          | 3    | 2                         | 5    | -                        | 3    | 2                         | 5    | -                           | -    | 3                  | 3    |
| Wisconsin.....          | 1                          | -    | 3                         | 2    | -                        | -    | 1                         | -    | -                           | -    | -                  | -    |
| WEST NORTH CENTRAL..... | -                          | -    | 5                         | 15   | -                        | -    | 5                         | 8    | -                           | -    | 1                  | 7    |
| Minnesota.....          | -                          | -    | 3                         | 3    | -                        | -    | 3                         | 3    | -                           | -    | 1                  | 6    |
| Iowa.....               | -                          | -    | -                         | 5    | -                        | -    | -                         | 2    | -                           | -    | -                  | 1    |
| Missouri.....           | -                          | -    | 1                         | 5    | -                        | -    | 1                         | 2    | -                           | -    | -                  | -    |
| North Dakota.....       | -                          | -    | -                         | 2    | -                        | -    | -                         | 1    | -                           | -    | -                  | -    |
| South Dakota.....       | -                          | -    | -                         | -    | -                        | -    | -                         | -    | -                           | -    | -                  | -    |
| Nebraska.....           | -                          | -    | 1                         | -    | -                        | -    | 1                         | -    | -                           | -    | -                  | -    |
| Kansas.....             | -                          | -    | -                         | -    | -                        | -    | -                         | -    | -                           | -    | -                  | -    |
| SOUTH ATLANTIC.....     | 3                          | 4    | 21                        | 23   | 3                        | 3    | 18                        | 18   | -                           | 1    | 10                 | 12   |
| Delaware.....           | -                          | -    | -                         | -    | -                        | -    | -                         | -    | -                           | -    | 1                  | -    |
| Maryland.....           | -                          | -    | -                         | -    | -                        | -    | -                         | -    | -                           | -    | -                  | -    |
| District of Columbia..  | -                          | -    | -                         | 1    | -                        | -    | -                         | -    | -                           | -    | -                  | -    |
| Virginia.....           | -                          | 2    | 2                         | 5    | -                        | 2    | 1                         | 5    | -                           | -    | 2                  | 4    |
| West Virginia.....      | -                          | -    | 1                         | 3    | -                        | -    | 1                         | 3    | -                           | -    | -                  | -    |
| North Carolina.....     | -                          | -    | 3                         | 2    | -                        | -    | 3                         | 2    | -                           | -    | -                  | -    |
| South Carolina.....     | 2                          | -    | 5                         | 1    | 2                        | -    | 4                         | 1    | -                           | -    | -                  | 1    |
| Georgia.....            | 1                          | 2    | 5                         | 4    | 1                        | 1    | 4                         | 3    | -                           | 1    | -                  | -    |
| Florida.....            | -                          | -    | 5                         | 7    | -                        | -    | 5                         | 4    | -                           | -    | 7                  | 7    |
| EAST SOUTH CENTRAL..... | 5                          | 1    | 29                        | 17   | 5                        | 1    | 27                        | 12   | -                           | -    | 5                  | 3    |
| Kentucky.....           | -                          | -    | -                         | 9    | -                        | -    | -                         | 6    | -                           | -    | 3                  | 2    |
| Tennessee.....          | -                          | 1    | 4                         | 4    | -                        | 1    | 4                         | 2    | -                           | -    | -                  | -    |
| Alabama.....            | 5                          | -    | 23                        | 3    | 5                        | -    | 21                        | 3    | -                           | -    | 2                  | 1    |
| Mississippi.....        | -                          | -    | 2                         | 1    | -                        | -    | 2                         | 1    | -                           | -    | -                  | -    |
| WEST SOUTH CENTRAL..... | 1                          | 17   | 21                        | 185  | 1                        | 10   | 21                        | 144  | -                           | 7    | 11                 | 42   |
| Arkansas.....           | 1                          | 1    | 3                         | 3    | 1                        | 1    | 3                         | 3    | -                           | -    | 2                  | 2    |
| Louisiana.....          | -                          | -    | 14                        | 10   | -                        | -    | 14                        | 8    | -                           | -    | -                  | -    |
| Oklahoma.....           | -                          | -    | -                         | 3    | -                        | -    | -                         | 1    | -                           | -    | -                  | -    |
| Texas.....              | -                          | 16   | 4                         | 169  | -                        | 9    | 4                         | 132  | -                           | 7    | 9                  | 40   |
| MOUNTAIN.....           | -                          | -    | -                         | 10   | -                        | -    | -                         | 8    | -                           | -    | 1                  | 3    |
| Montana.....            | -                          | -    | -                         | 3    | -                        | -    | -                         | 2    | -                           | -    | -                  | -    |
| Idaho.....              | -                          | -    | -                         | 1    | -                        | -    | -                         | 1    | -                           | -    | -                  | -    |
| Wyoming.....            | -                          | -    | -                         | 1    | -                        | -    | -                         | 1    | -                           | -    | -                  | -    |
| Colorado.....           | -                          | -    | -                         | 1    | -                        | -    | -                         | -    | -                           | -    | 1                  | 2    |
| New Mexico.....         | -                          | -    | -                         | -    | -                        | -    | -                         | -    | -                           | -    | -                  | -    |
| Arizona.....            | -                          | -    | -                         | 3    | -                        | -    | -                         | 3    | -                           | -    | -                  | -    |
| Utah.....               | -                          | -    | -                         | 1    | -                        | -    | -                         | 1    | -                           | -    | -                  | 1    |
| Nevada.....             | -                          | -    | -                         | -    | -                        | -    | -                         | -    | -                           | -    | -                  | -    |
| PACIFIC.....            | -                          | 1    | 16                        | 36   | -                        | 1    | 14                        | 32   | -                           | -    | 12                 | 42   |
| Washington.....         | -                          | -    | -                         | -    | -                        | -    | -                         | -    | -                           | -    | 1                  | -    |
| Oregon.....             | -                          | -    | 2                         | 5    | -                        | -    | 1                         | 5    | -                           | -    | -                  | -    |
| California.....         | -                          | 1    | 14                        | 31   | -                        | 1    | 13                        | 27   | -                           | -    | 11                 | 42   |
| Alaska.....             | -                          | -    | -                         | -    | -                        | -    | -                         | -    | -                           | -    | -                  | -    |
| Hawaii.....             | -                          | -    | -                         | -    | -                        | -    | -                         | -    | -                           | -    | -                  | -    |
| Puerto Rico.....        | -                          | -    | 4                         | 9    | -                        | -    | 4                         | 9    | -                           | -    | -                  | -    |

Table 3. CASES OF SPECIFIED NOTIFIABLE DISEASES: UNITED STATES  
FOR WEEKS ENDED  
AUGUST 10, 1963 AND AUGUST 11, 1962 - (Continued)

| Area                    | Brucellosis |                        | Diphtheria |                        | Encephalitis,<br>infectious |      | Hepatitis,<br>infectious and serum |              |       |      | Measles   |       |
|-------------------------|-------------|------------------------|------------|------------------------|-----------------------------|------|------------------------------------|--------------|-------|------|-----------|-------|
|                         | 32nd week   | Cumulative<br>32 weeks | 32nd week  | Cumulative<br>32 weeks | 32nd week                   | 1962 | 32nd week                          |              |       |      | 32nd week | 1962  |
|                         |             |                        |            |                        |                             |      | Under<br>20 yr.                    | 20 &<br>over | Total |      |           |       |
|                         | 1963        | 1963                   | 1963       | 1963                   | 1963                        | 1962 | 1963                               | 1963         | 1963  | 1962 | 1963      | 1962  |
| UNITED STATES.....      | 9           | 225                    | 1          | 153                    | 19                          | 46   | 390                                | 368          | 802   | 734  | 1,528     | 1,660 |
| NEW ENGLAND.....        | 1           | 1                      | -          | 8                      | 1                           | 3    | 52                                 | 44           | 103   | 62   | 88        | 113   |
| Maine.....              | -           | -                      | -          | -                      | -                           | -    | 28                                 | 19           | 47    | 21   | 1         | 12    |
| New Hampshire.....      | -           | -                      | -          | -                      | -                           | -    | 10                                 | 10           | 20    | 13   | -         | 1     |
| Vermont.....            | 1           | 1                      | -          | -                      | -                           | -    | 2                                  | 1            | 3     | 2    | 5         | 1     |
| Massachusetts.....      | -           | -                      | -          | 6                      | 1                           | -    | 8                                  | 9            | 19    | 15   | 34        | 55    |
| Rhode Island.....       | -           | -                      | -          | 2                      | -                           | 3    | -                                  | -            | 2     | -    | 5         | 12    |
| Connecticut.....        | -           | -                      | -          | -                      | -                           | -    | 4                                  | 5            | 12    | 11   | 43        | 32    |
| MIDDLE ATLANTIC.....    | -           | 5                      | -          | 21                     | 2                           | 12   | 88                                 | 72           | 160   | 135  | 255       | 231   |
| New York.....           | -           | 3                      | -          | 13                     | 2                           | 12   | 50                                 | 39           | 89    | 70   | 166       | 169   |
| New Jersey.....         | -           | -                      | -          | 3                      | -                           | -    | 6                                  | 16           | 22    | 24   | 51        | 52    |
| Pennsylvania.....       | -           | 2                      | -          | 5                      | -                           | -    | 32                                 | 17           | 49    | 41   | 38        | 10    |
| EAST NORTH CENTRAL..... | 1           | 19                     | 1          | 23                     | 2                           | 4    | 74                                 | 56           | 138   | 124  | 409       | 354   |
| Ohio.....               | -           | -                      | -          | 1                      | -                           | 2    | 23                                 | 11           | 36    | 37   | 90        | 23    |
| Indiana.....            | -           | 4                      | -          | 5                      | -                           | -    | 3                                  | 9            | 13    | 7    | 22        | 7     |
| Illinois.....           | 1           | 12                     | 1          | 12                     | 1                           | 2    | 21                                 | 13           | 35    | 36   | 49        | 48    |
| Michigan.....           | -           | 2                      | -          | 3                      | 1                           | -    | 26                                 | 22           | 48    | 40   | 171       | 155   |
| Wisconsin.....          | -           | 1                      | -          | 2                      | -                           | -    | 1                                  | 1            | 6     | 4    | 77        | 121   |
| WEST NORTH CENTRAL..... | 5           | 138                    | -          | 37                     | 1                           | 2    | 13                                 | 12           | 27    | 43   | 42        | 65    |
| Minnesota.....          | -           | 8                      | -          | 15                     | -                           | -    | 3                                  | 2            | 5     | 5    | 1         | 12    |
| Iowa.....               | 4           | 100                    | -          | 1                      | -                           | -    | 1                                  | 7            | 8     | 5    | 17        | 18    |
| Missouri.....           | 1           | 10                     | -          | 1                      | -                           | 2    | 3                                  | 2            | 7     | 15   | -         | 8     |
| North Dakota.....       | -           | -                      | -          | 1                      | 1                           | -    | 1                                  | -            | 1     | 3    | 24        | 23    |
| South Dakota.....       | -           | 8                      | -          | 11                     | -                           | -    | 1                                  | -            | 1     | 1    | -         | 4     |
| Nebraska.....           | -           | 6                      | -          | 8                      | -                           | -    | -                                  | 1            | 1     | 9    | -         | -     |
| Kansas.....             | -           | 6                      | -          | -                      | -                           | -    | 4                                  | -            | 4     | 5    | NN        | NN    |
| SOUTH ATLANTIC.....     | 2           | 12                     | -          | 31                     | 5                           | 7    | 29                                 | 31           | 61    | 107  | 216       | 124   |
| Delaware.....           | -           | -                      | -          | -                      | -                           | -    | -                                  | -            | -     | -    | 1         | 1     |
| Maryland.....           | -           | -                      | -          | -                      | 1                           | -    | 2                                  | 4            | 6     | 12   | 31        | 8     |
| District of Columbia..  | -           | -                      | -          | -                      | -                           | -    | -                                  | 1            | 1     | 5    | -         | 1     |
| Virginia.....           | 1           | 4                      | -          | -                      | 1                           | -    | 5                                  | 6            | 11    | 18   | 25        | 47    |
| West Virginia.....      | -           | -                      | -          | 1                      | -                           | -    | 4                                  | 3            | 7     | 10   | 53        | 32    |
| North Carolina.....     | 1           | 4                      | -          | 2                      | -                           | 1    | 16                                 | 3            | 19    | 34   | -         | 1     |
| South Carolina.....     | -           | -                      | -          | 9                      | -                           | 1    | -                                  | 1            | 2     | 10   | 9         | 2     |
| Georgia.....            | -           | 3                      | -          | 10                     | -                           | -    | 1                                  | -            | 1     | 4    | 11        | -     |
| Florida.....            | -           | 1                      | -          | 9                      | 3                           | 5    | 1                                  | 13           | 14    | 14   | 86        | 32    |
| EAST SOUTH CENTRAL..... | -           | 10                     | -          | 10                     | -                           | 2    | 36                                 | 25           | 61    | 79   | 74        | 74    |
| Kentucky.....           | -           | 3                      | -          | -                      | -                           | -    | 17                                 | 7            | 24    | 22   | 28        | 8     |
| Tennessee.....          | -           | 5                      | -          | 2                      | -                           | 1    | 9                                  | 7            | 16    | 38   | 38        | 59    |
| Alabama.....            | -           | 2                      | -          | 8                      | -                           | -    | 7                                  | 7            | 14    | 6    | 1         | 3     |
| Mississippi.....        | -           | -                      | -          | -                      | -                           | 1    | 3                                  | 4            | 7     | 13   | 7         | 4     |
| WEST SOUTH CENTRAL..... | -           | 25                     | -          | 17                     | 1                           | 4    | 33                                 | 28           | 62    | 65   | 109       | 123   |
| Arkansas.....           | -           | 4                      | -          | 1                      | 1                           | 1    | 2                                  | 5            | 7     | 13   | 1         | -     |
| Louisiana.....          | -           | 6                      | -          | 2                      | -                           | -    | 9                                  | 11           | 20    | 3    | 1         | -     |
| Oklahoma.....           | -           | 5                      | -          | 6                      | -                           | -    | 2                                  | 2            | 4     | 1    | 8         | -     |
| Texas.....              | -           | 10                     | -          | 8                      | -                           | 3    | 20                                 | 10           | 31    | 48   | 99        | 123   |
| MOUNTAIN.....           | -           | 7                      | -          | 4                      | -                           | 2    | 27                                 | 26           | 76    | 28   | 130       | 187   |
| Montana.....            | -           | -                      | -          | -                      | -                           | -    | 1                                  | 4            | 7     | 2    | 12        | 61    |
| Idaho.....              | -           | -                      | -          | -                      | -                           | -    | -                                  | -            | 7     | 2    | 11        | 15    |
| Wyoming.....            | -           | 1                      | -          | -                      | -                           | -    | -                                  | -            | -     | -    | -         | -     |
| Colorado.....           | -           | -                      | -          | 3                      | -                           | -    | -                                  | -            | 7     | 8    | 31        | 36    |
| New Mexico.....         | -           | -                      | -          | 1                      | -                           | -    | 2                                  | 1            | 3     | 5    | NN        | NN    |
| Arizona.....            | -           | 3                      | -          | -                      | -                           | 1    | -                                  | -            | 8     | 7    | 45        | 49    |
| Utah.....               | -           | 3                      | -          | -                      | -                           | 1    | 23                                 | 21           | 44    | 3    | 29        | 26    |
| Nevada.....             | -           | -                      | -          | -                      | -                           | -    | -                                  | -            | -     | 1    | 2         | -     |
| PACIFIC.....            | -           | 8                      | -          | 2                      | 7                           | 10   | 38                                 | 74           | 114   | 91   | 205       | 389   |
| Washington.....         | -           | -                      | -          | -                      | -                           | -    | 5                                  | 10           | 17    | 21   | 15        | 28    |
| Oregon.....             | -           | 2                      | -          | -                      | -                           | 1    | 1                                  | 6            | 7     | 6    | 21        | 48    |
| California.....         | -           | 5                      | -          | 2                      | 7                           | 9    | 32                                 | 56           | 88    | 62   | 161       | 167   |
| Alaska.....             | -           | -                      | -          | -                      | -                           | -    | -                                  | -            | -     | 2    | -         | 34    |
| Hawaii.....             | -           | 1                      | -          | -                      | -                           | -    | -                                  | 2            | 2     | -    | 8         | 112   |
| Puerto Rico.....        | -           | -                      | -          | 10                     | -                           | -    | 10                                 | 3            | 13    | 23   | 7         | 63    |

## Morbidity and Mortality Weekly Report

Table 3. CASES OF SPECIFIED NOTIFIABLE DISEASES: UNITED STATES  
FOR WEEKS ENDED

AUGUST 10, 1963 AND AUGUST 11, 1962 - (Continued)

| Area                 | Meningococcal Infections |                     | Streptococcal Sore Throat & Scarlet Fever |       | Tetanus  | Tickborne Typhus (Rocky Mt. Spotted) | Tularemia | Typhoid Fever |                     | Rabies in Animals |      |                     |
|----------------------|--------------------------|---------------------|---|-------|----------|--------------------------------------|-----------|---------------|---------------------|-------------------|------|---------------------|
|                      | 32nd wk.                 | Cumulative 32 weeks | 32nd week                                 |       | 32nd wk. | 32nd wk.                             | 32nd wk.  | 32nd wk.      | Cumulative 32 weeks | 32nd week         |      | Cumulative 32 weeks |
|                      |                          |                     | 1963                                      | 1962  |          |                                      |           |               |                     | 1963              | 1962 |                     |
|                      | 1963                     | 1963                | 1963                                      | 1962  | 1963     | 1963                                 | 1963      | 1963          | 1963                | 1963              | 1962 | 1963                |
| UNITED STATES.....   | 22                       | 1,636               | 3,363                                     | 3,426 | 7        | 6                                    | 5         | 15            | 263                 | 48                | 60   | 2,423               |
| NEW ENGLAND.....     | 2                        | 103                 | 247                                       | 101   | 1        | -                                    | -         | 1             | 7                   | -                 | -    | 25                  |
| Maine.....           | -                        | 17                  | 63  | 4     | -        | -                                    | -         | -             | -                   | -                 | -    | 1                   |
| New Hampshire.....   | -                        | 4                   | 7   | 2     | -        | -                                    | -         | -             | -                   | -                 | -    | 12                  |
| Vermont.....         | -                        | 3                   | 2   | 1     | -        | -                                    | -         | -             | 1                   | -                 | -    | 11                  |
| Massachusetts.....   | 2                        | 50                  | 30  | 19    | 1        | -                                    | -         | -             | 4                   | -                 | -    | 1                   |
| Rhode Island.....    | -                        | 9                   | 19  | 9     | -        | -                                    | -         | -             | -                   | -                 | -    | -                   |
| Connecticut.....     | -                        | 20                  | 126                                       | 66    | -        | -                                    | -         | 1             | 2                   | -                 | -    | -                   |
| MIDDLE ATLANTIC..... | 5                        | 228                 | 83  | 83    | 1        | -                                    | -         | 1             | 57                  | 1                 | -    | 75                  |
| New York.....        | 4                        | 107                 | 68  | 68    | 1        | -                                    | -         | -             | 19                  | 1                 | -    | 55                  |
| New Jersey.....      | -                        | 32                  | 9   | 10    | -        | -                                    | -         | -             | 3                   | -                 | -    | -                   |
| Pennsylvania.....    | 1                        | 89                  | 6   | 5     | -        | -                                    | -         | 1             | 35                  | -                 | -    | 20                  |
| EAST NORTH CENTRAL.. | 1                        | 253                 | 195                                       | 195   | 3        | 1                                    | -         | 1             | 18                  | 12                | 17   | 408                 |
| Ohio.....            | -                        | 73                  | 15  | 10    | -        | 1                                    | -         | 1             | 8                   | 8                 | 10   | 239                 |
| Indiana.....         | -                        | 31                  | 50  | 48    | 3        | -                                    | -         | -             | 1                   | -                 | 3    | 40                  |
| Illinois.....        | -                        | 43                  | 46  | 44    | -        | -                                    | -         | -             | 6                   | 3                 | -    | 60                  |
| Michigan.....        | 1                        | 79                  | 55  | 52    | -        | -                                    | -         | -             | 1                   | -                 | 4    | 39                  |
| Wisconsin.....       | -                        | 27                  | 29  | 41    | -        | -                                    | -         | -             | 2                   | 1                 | -    | 30                  |
| WEST NORTH CENTRAL.. | 2                        | 100                 | 124                                       | 82    | 1        | -                                    | 1         | 1             | 17                  | 11                | 9    | 609                 |
| Minnesota.....       | 1                        | 21                  | 9   | 5     | 1        | -                                    | -         | -             | 3                   | 3                 | 2    | 148                 |
| Iowa.....            | -                        | 5                   | 29  | 28    | -        | -                                    | -         | -             | 2                   | 4                 | 1    | 234                 |
| Missouri.....        | 1                        | 33                  | -   | 4     | -        | -                                    | 1         | 1             | 10                  | -                 | 1    | 106                 |
| North Dakota.....    | -                        | 5                   | 79  | 44    | -        | -                                    | -         | -             | -                   | -                 | -    | 23                  |
| South Dakota.....    | -                        | 5                   | 6   | 1     | -        | -                                    | -         | -             | 1                   | 3                 | 4    | 69                  |
| Nebraska.....        | -                        | 21                  | -   | -     | -        | -                                    | -         | -             | 1                   | -                 | -    | 17                  |
| Kansas.....          | -                        | 10                  | 1   | -     | -        | -                                    | -         | -             | -                   | 1                 | 1    | 12                  |
| SOUTH ATLANTIC.....  | 6                        | 309                 | 421                                       | 362   | 1        | 4                                    | -         | 1             | 41                  | 5                 | 9    | 345                 |
| Delaware.....        | -                        | 2                   | -   | -     | -        | 1                                    | -         | -             | 1                   | -                 | -    | 1                   |
| Maryland.....        | -                        | 47                  | 9   | 6     | -        | 1                                    | -         | 1             | 7                   | -                 | -    | -                   |
| Dist. of Columbia..  | -                        | 6                   | -   | -     | -        | -                                    | -         | -             | -                   | -                 | -    | -                   |
| Virginia.....        | -                        | 72                  | 62  | 77    | 1        | 1                                    | -         | -             | 5                   | 2                 | -    | 125                 |
| West Virginia.....   | -                        | 16                  | 112                                       | 77    | -        | 1                                    | -         | -             | 6                   | 2                 | 7    | 100                 |
| North Carolina.....  | -                        | 52                  | 3   | 8     | -        | -                                    | -         | -             | 6                   | -                 | -    | 6                   |
| South Carolina.....  | 1                        | 15                  | 33  | 8     | -        | -                                    | -         | -             | 2                   | -                 | -    | 6                   |
| Georgia.....         | -                        | 23                  | 2   | 87    | -        | -                                    | -         | -             | 2                   | 1                 | -    | 45                  |
| Florida.....         | 5                        | 76                  | 200                                       | 99    | -        | -                                    | -         | -             | 12                  | -                 | 2    | 62                  |
| EAST SOUTH CENTRAL.. | 1                        | 122                 | 657                                       | 852   | -        | 1                                    | -         | 4             | 26                  | 3                 | 3    | 200                 |
| Kentucky.....        | 1                        | 26                  | 46  | 14    | -        | -                                    | -         | -             | 1                   | 1                 | -    | 95                  |
| Tennessee.....       | -                        | 53                  | 567                                       | 755   | -        | 1                                    | -         | 4             | 18                  | 2                 | 2    | 88                  |
| Alabama.....         | -                        | 21                  | 7   | 17    | -        | -                                    | -         | -             | 4                   | -                 | 1    | 17                  |
| Mississippi.....     | -                        | 22                  | 37  | 66    | -        | -                                    | -         | -             | 3                   | -                 | -    | -                   |
| WEST SOUTH CENTRAL.. | 3                        | 159                 | 474                                       | 598   | -        | -                                    | 2         | 3             | 42                  | 7                 | 10   | 464                 |
| Arkansas.....        | 1                        | 11                  | -   | 1     | -        | -                                    | 2         | -             | 18                  | 3                 | 1    | 40                  |
| Louisiana.....       | 2                        | 65                  | 4   | 1     | -        | -                                    | -         | 3             | 11                  | -                 | -    | 38                  |
| Oklahoma.....        | -                        | 29                  | 19  | -     | -        | -                                    | -         | -             | 3                   | -                 | 1    | 36                  |
| Texas.....           | -                        | 54                  | 451                                       | 596   | -        | -                                    | -         | -             | 10                  | 4                 | 8    | 350                 |
| MOUNTAIN.....        | -                        | 55                  | 741                                       | 673   | -        | -                                    | 2         | 2             | 13                  | 4                 | -    | 61                  |
| Montana.....         | -                        | 3                   | 33  | 19    | -        | -                                    | -         | -             | -                   | -                 | -    | -                   |
| Idaho.....           | -                        | 4                   | 27  | 99    | -        | -                                    | -         | -             | -                   | -                 | -    | -                   |
| Wyoming.....         | -                        | 4                   | 7   | 6     | -        | -                                    | 2         | 1             | 1                   | -                 | -    | -                   |
| Colorado.....        | -                        | 14                  | 303                                       | 235   | -        | -                                    | -         | 1             | 6                   | 1                 | -    | 7                   |
| New Mexico.....      | -                        | 4                   | 211                                       | 178   | -        | -                                    | -         | -             | 2                   | -                 | -    | 21                  |
| Arizona.....         | -                        | 9                   | 41  | 99    | -        | -                                    | -         | -             | 4                   | 3                 | -    | 33                  |
| Utah.....            | -                        | 14                  | 119                                       | 37    | -        | -                                    | -         | -             | -                   | -                 | -    | -                   |
| Nevada.....          | -                        | 3                   | -   | -     | -        | -                                    | -         | -             | -                   | -                 | -    | -                   |
| PACIFIC.....         | 2                        | 307                 | 421                                       | 480   | -        | -                                    | -         | 1             | 42                  | 5                 | 12   | 236                 |
| Washington.....      | 1                        | 25                  | 51  | 60    | -        | -                                    | -         | -             | 1                   | -                 | -    | -                   |
| Oregon.....          | -                        | 22                  | 4   | 7     | -        | -                                    | -         | -             | 2                   | -                 | 2    | 1                   |
| California.....      | 1                        | 241                 | 320                                       | 387   | -        | -                                    | -         | 1             | 36                  | 5                 | 10   | 226                 |
| Alaska.....          | ---                      | 11                  | ---                                       | 11    | ---      | ---                                  | ---       | ---           | 1                   | ---               | ---  | 9                   |
| Hawaii.....          | -                        | 8                   | 46  | 15    | -        | -                                    | -         | -             | 2                   | -                 | -    | -                   |
| Puerto Rico.....     | -                        | 5                   | 17  | 1     | 1        | -                                    | -         | -             | 11                  | -                 | -    | 10                  |

# Morbidity and Mortality Weekly Report

267

Table 4 (C). TOTAL DEATHS UNDER 1 YEAR OF AGE IN REPORTING CITIES

(Tables 4(A), 4(B), 4(C), and 4(D) will be published in sequence covering a four-week period.)<sup>o</sup>

| Area                       | For weeks ending |      |     |      | Area  | For weeks ending |      |     |       |
|----------------------------|------------------|------|-----|------|---|------------------|------|-----|-------|
|                            | 7/20             | 7/27 | 8/3 | 8/10 |   | 7/20             | 7/27 | 8/3 | 8/10  |
| <b>NEW ENGLAND:</b>        |                  |      |     |      | <b>SOUTH ATLANTIC:</b>                                      |                  |      |     |       |
| Boston, Mass.....          | 133              | 124  | 183 | 144  | Atlanta, Ga.....  | 56               | 44   | 43  | 54    |
| Bridgeport, Conn.....      | 31               | 14   | 24  | 23   | Baltimore, Md.....  | 137              | 141  | 118 | 91    |
| Cambridge, Mass.....       | 22               | 17   | 23  | 18   | Charlotte, N.C.....   | 19               | 20   | 13  | 17    |
| Fall River, Mass.....      | 14               | 16   | 19  | 10   | Jacksonville, Fla.....                                      | 24               | 28   | 22  | 37    |
| Hartford, Conn.....        | 39               | 22   | 39  | 16   | Miami, Fla.....   | 43               | 47   | 47  | 42    |
| Lowell, Mass.....          | 12               | 14   | 28  | 24   | Norfolk, Va.....  | 30               | 29   | 21  | 25    |
| Lynn, Mass.....            | 19               | 13   | 30  | 9    | Richmond, Va.....   | 49               | 36   | 52  | 49    |
| New Bedford, Mass.....     | 17               | 16   | 26  | 17   | Savannah, Ga.....   | 5                | 12   | 12  | 9     |
| New Haven, Conn.....       | 32               | 25   | 30  | 26   | St. Petersburg, Fla.....                                    | 44               | 42   | 37  | 59    |
| Providence, R.I.....       | 27               | 36   | 45  | 27   | Tampa, Fla.....   | 39               | 39   | 31  | 32    |
| Somerville, Mass.....      | 12               | 11   | 14  | 9    | Washington, D.C.....  | 77               | 95   | 79  | 76    |
| Springfield, Mass.....     | 32               | 29   | 32  | 26   | Wilmington, Del.....  | 25               | 28   | 10  | 22    |
| Waterbury, Conn.....       | 13               | 24   | 20  | 11   | <b>EAST SOUTH CENTRAL:</b>                                  |                  |      |     |       |
| Worcester, Mass.....       | 22               | 31   | 46  | 26   | Birmingham, Ala.....  | 33               | 42   | 35  | 35    |
| <b>MIDDLE ATLANTIC:</b>    |                  |      |     |      | Chattanooga, Tenn.....                                      | 16               | 34   | 16  | 13    |
| Albany, N.Y.....           | 21               | 19   | 28  | 18   | Knoxville, Tenn.....  | 15               | 21   | 18  | 13    |
| Allentown, Pa.....         | 15               | 21   | 17  | 15   | Louisville, Ky.....   | 51               | 70   | 62  | 41    |
| Buffalo, N.Y.....          | 72               | 77   | 89  | 51   | Memphis, Tenn.....  | 46               | 49   | 66  | 53    |
| Camden, N.J.....           | 19               | 24   | 19  | 17   | Mobile, Ala.....  | 24               | 14   | 13  | 24    |
| Elizabeth, N.J.....        | 17               | 12   | 17  | 14   | Montgomery, Ala.....  | 13               | 23   | 15  | 11    |
| Erie, Pa.....              | 25               | 26   | 19  | 19   | Nashville, Tenn.....  | 46               | 59   | 45  | 43    |
| Jersey City, N.J.....      | 44               | 40   | 43  | 35   | <b>WEST SOUTH CENTRAL:</b>                                  |                  |      |     |       |
| Newark, N.J.....           | 59               | 35   | 42  | 41   | Austin, Tex.....  | 29               | 24   | 18  | 19    |
| New York City, N.Y.....    | 859              | 865  | 992 | 762  | Baton Rouge, La.....  | 17               | 15   | 9   | 6     |
| Paterson, N.J.....         | 23               | 15   | 26  | 20   | Corpus Christi, Tex.....                                    | 11               | 12   | 17  | 12    |
| Philadelphia, Pa.....      | 316              | 304  | 301 | 345  | Dallas, Tex.....  | 59               | 76   | 60  | 44    |
| Pittsburgh, Pa.....        | 128              | 107  | 101 | 98   | El Paso, Tex.....   | 19               | 14   | 19  | 12    |
| Reading, Pa.....           | 27               | 29   | 31  | 38   | Fort Worth, Tex.....  | 45               | 42   | 35  | 27    |
| Rochester, N.Y.....        | 67               | 52   | 78  | 63*  | Houston, Tex.....   | 93               | 82   | 72  | 73    |
| Schenectady, N.Y.....      | 18               | 15   | 17  | 17   | Little Rock, Ark.....                                       | 37               | 34   | 38  | 25    |
| Scranton, Pa.....          | 19               | 28   | 17  | 18   | New Orleans, La.....  | 85               | 81   | 85  | 93    |
| Syracuse, N.Y.....         | 32               | 42   | 32  | 30   | Oklahoma City, Okla.....                                    | 35               | 49   | 47  | 42    |
| Trenton, N.J.....          | 19               | 38   | 16  | 25   | San Antonio, Tex.....                                       | 51               | 46   | 48  | 45    |
| Utica, N.Y.....            | 25               | 22   | 13  | 10   | Shreveport, La.....   | 25               | 24   | 37  | 31    |
| Yonkers, N.Y.....          | 19               | 15   | 19  | 16   | Tulsa, Okla.....  | 30               | 24   | 21  | 36    |
| <b>EAST NORTH CENTRAL:</b> |                  |      |     |      | <b>MOUNTAIN:</b>  |                  |      |     |       |
| Akron, Ohio.....           | 27               | 23   | 27  | 30   | Albuquerque, N. Mex.....                                    | 17               | 22   | 7   | 12    |
| Canton, Ohio.....          | 20               | 16   | 12  | 22   | Colorado Springs, Colo.....                                 | 11               | 16   | 6   | 12    |
| Chicago, Ill.....          | 368              | 339  | 351 | 343  | Denver, Colo.....   | 64               | 75   | 54  | 57    |
| Cincinnati, Ohio.....      | 94               | 76   | 92  | 96   | Ogden, Utah.....  | 2                | 9    | 14  | 10    |
| Cleveland, Ohio.....       | 98               | 110  | 102 | 112  | Phoenix, Ariz.....  | 34               | 67   | 45  | 43    |
| Columbus, Ohio.....        | 54               | 63   | 68  | 55   | Pueblo, Colo.....   | 10               | 5    | 10  | 11    |
| Dayton, Ohio.....          | 56               | 49   | 44  | 47   | Salt Lake City, Utah.....                                   | 41               | 28   | 34  | 35    |
| Detroit, Mich.....         | 167              | 160  | 204 | 173  | Tucson, Ariz.....   | 21               | 25   | 26  | 14    |
| Evansville, Ind.....       | 23               | 27   | 22  | 19   | <b>PACIFIC:</b>   |                  |      |     |       |
| Flint, Mich.....           | 14               | 24   | 28  | 22   | Berkeley, Calif.....  | 6                | 13   | 12  | 10    |
| Fort Wayne, Ind.....       | 29               | 19   | 24  | 27   | Fresno, Calif.....  | 24               | 18   | 33  | 25    |
| Gary, Ind.....             | 9                | 8    | 20  | 17   | Glendale, Calif.....  | 28               | 20   | 18  | 20    |
| Grand Rapids, Mich.....    | 26               | 25   | 21  | 31   | Honolulu, Hawaii.....                                       | 18               | 18   | 21  | 17    |
| Indianapolis, Ind.....     | 73               | 86   | 51  | 90   | Long Beach, Calif.....                                      | 39               | 44   | 34  | 27    |
| Madison, Wis.....          | 13               | 13   | 21  | 21   | Los Angeles, Calif.....                                     | 309              | 293  | 278 | 271   |
| Milwaukee, Wis.....        | 64               | 50   | 63  | 74   | Oakland, Calif.....   | 59               | 51   | 40  | 55    |
| Peoria, Ill.....           | 16               | 15   | 9   | 15   | Pasadena, Calif.....  | 22               | 17   | 19  | 25*   |
| Rockford, Ill.....         | 12               | 16   | 26  | 19   | Portland, Oreg.....   | 65               | 76   | 65  | 65    |
| South Bend, Ind.....       | 34               | 24   | 23  | 14   | Sacramento, Calif.....                                      | 31               | 29   | 28  | 31*   |
| Toledo, Ohio.....          | 43               | 53   | 62  | 51   | San Diego, Calif.....                                       | 56               | 43   | 39  | 49    |
| Youngstown, Ohio.....      | 37               | 39   | 31  | 36   | San Francisco, Calif.....                                   | 85               | 91   | 87  | 108   |
| <b>WEST NORTH CENTRAL:</b> |                  |      |     |      | San Jose, Calif.....  | 21               | 20   | 15  | 19    |
| Des Moines, Iowa.....      | 32               | 31   | 29  | 31   | Seattle, Wash.....  | 79               | 77   | 87  | 78*   |
| Duluth, Minn.....          | 21               | 7    | 21  | 13   | Spokane, Wash.....  | 34               | 32   | 29  | 26    |
| Kansas City, Kans.....     | 14               | 28   | 20  | 18   | Tacoma, Wash.....   | 25               | 33   | 18  | 31    |
| Kansas City, Mo.....       | 100              | 80   | 66  | 78   | San Juan, P.R.....  | 18               | 12   | 13  | (---) |
| Lincoln, Nebr.....         | 16               | 19   | 13  | 20   | <sup>o</sup> Current Week Mortality for 108 Selected Cities |                  |      |     |       |
| Minneapolis, Minn.....     | 72               | 83   | 84  | 66   | 4(A) Total Mortality, all ages.....                         | 10,620           |      |     |       |
| Omaha, Nebr.....           | 54               | 43   | 37  | 32   | 4(B) Pneumonia-Influenza Deaths, all ages.....              | 361              |      |     |       |
| St. Louis, Mo.....         | 126              | 124  | 115 | 119  | 4(C) Total Deaths under 1 Year of Age.....                  | 702              |      |     |       |
| St. Paul, Minn.....        | 38               | 40   | 52  | 37   | 4(D) Total Deaths, Persons 65 years and over.....           | 5,725            |      |     |       |
| Wichita, Kans.....         | 44               | 47   | 26  | 31   |   |                  |      |     |       |

\*Estimate - based on average percent of divisional total.  
Totals for previous weeks include reported corrections.

NOTE: All deaths by place of occurrence.

## INTERNATIONAL NOTES

## Smallpox - Sweden

Sweden declared Stockholm free of smallpox as of August 5, 1963. The total number of cases reported in this outbreak was 26, with 4 deaths. (Previous reports appeared in MMWR, Vol. 12, pp. 174, 183, and 236.)

## Smallpox - Poland

No new cases have been reported in Wroclaw (Breslau) or elsewhere in Poland, according to the information received from the World Health Organization as of August 12. (Previous reports appeared in MMWR, Vol. 12, pp. 244, 252, and 255.)

## QUARANTINE MEASURES

Immunization Information for International Travel  
1962 Edition

Public Health Service Publication No. 384

Section 6, Page 69 - Under Los Angeles, California, delete all information concerning the U. S. Public Health Service Outpatient Clinic.

## ERRATUM

In the Hepatitis Morbidity Report published last week (Vol. 12, No. 31, page 254), it was incorrectly stated that Louisiana was among those States in which hepatitis rates were higher in 1963 than during the three previous years. The peak year for Louisiana occurred in 1961-1962.

---

In addition to the established procedures for reporting morbidity and mortality, the Communicable Disease Center welcomes accounts of interesting outbreaks or cases. Such accounts should be addressed to:

Editor, Morbidity and Mortality Weekly Report  
Communicable Disease Center  
Atlanta, Georgia 30333

---

Library  
81  
7 61  
CDC

Official Business

U. S. DEPARTMENT OF  
HEALTH, EDUCATION, AND WELFARE  
PUBLIC HEALTH SERVICE  
Communicable Disease Center  
Atlanta, Georgia 30333



POSTAGE AND FEES PAID  
U. S. DEPARTMENT OF H. E. W.