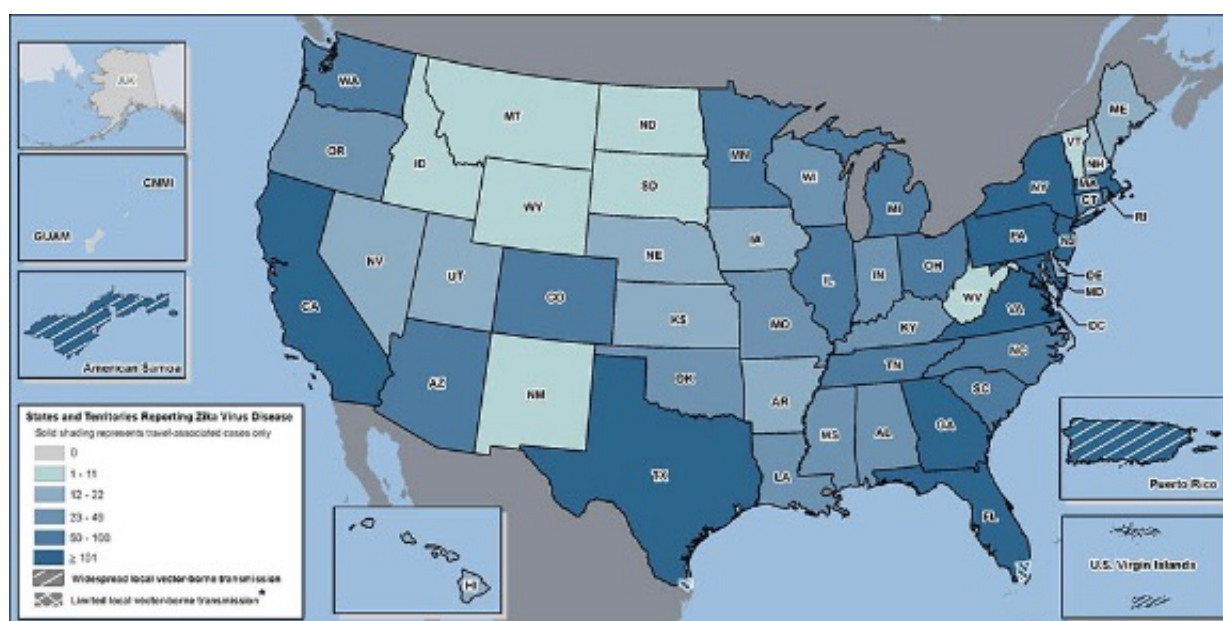


## Zika Virus

# Maps of Zika in the United States

## Zika Cases Reported in the United States

Laboratory-confirmed Zika virus disease cases reported to ArboNET by state or territory (as of December 28, 2016)



[\\*See detailed map of the areas with active Zika virus transmission below.](#)

Laboratory-confirmed Zika virus disease cases reported to ArboNET by state or territory – United States, 2015–2016 (as of December 28, 2016)§

States	Travel-associated cases*		Locally acquired cases†	
	No.	(% of cases in states) (N=4,593)	No.	(% of cases in states) (N=216)
Alabama	30	(1)	0	(0)
Arizona	51	(1)	0	(0)
Arkansas	15	(<1)	0	(0)
California	389	(9)	0	(0)
Colorado	52	(1)	0	(0)

Colorado	33	(1)	0	(0)
Connecticut	58	(1)	0	(0)
Delaware	17	(<1)	0	(0)
District of Columbia	28	(1)	0	(0)
Florida	825	(18)	210	(98)
Georgia	106	(2)	0	(0)
Hawaii	16	(<1)	0	(0)
Idaho	4	(<1)	0	(0)
Illinois	88	(2)	0	(0)
Indiana	49	(1)	0	(0)
Iowa	21	(<1)	0	(0)
Kansas	19	(<1)	0	(0)
Kentucky	24	(1)	0	(0)
Louisiana	35	(1)	0	(0)
Maine	13	(<1)	0	(0)
Maryland	126	(3)	0	(0)
Massachusetts	114	(2)	0	(0)
Michigan	64	(1)	0	(0)
Minnesota	64	(1)	0	(0)
Mississippi	23	(1)	0	(0)
Missouri	35	(1)	0	(0)
Montana	7	(<1)	0	(0)
Nebraska	13	(<1)	0	(0)
Nevada	18	(<1)	0	(0)
New Hampshire	12	(<1)	0	(0)
New Jersey	177	(4)	0	(0)
New Mexico	9	(<1)	0	(0)
New York	983	(21)	0	(0)
North Carolina	85	(2)	0	(0)
North Dakota	2	(<1)	0	(0)
Ohio	80	(2)	0	(0)
Oklahoma	29	(1)	0	(0)
Oregon	42	(1)	0	(0)
Pennsylvania††	166	(4)	0	(0)
Rhode Island	50	(1)	0	(0)
South Carolina	54	(1)	0	(0)
South Dakota	2	(<1)	0	(0)
Tennessee	50	(1)	0	(0)

Tennessee	59 (1)	0 (0)
Texas	283 (6)	6 (2)
Utah	20** (<1)	0 (0)
Vermont	10 (<1)	0 (0)
Virginia	103 (2)	0 (0)
Washington	61 (1)	0 (0)
West Virginia	11 (<1)	0 (0)
Wisconsin	48 (1)	0 (0)
Wyoming	2 (<1)	0 (0)

Territories	Travel-associated cases*	Locally acquired cases†
	No. (% of cases in territories) (N=132)	No. (% of cases in territories) (N=34,841)
American Samoa	1 (1)	114 (<1)
Puerto Rico	129 (98)	33,865*** (97)
US Virgin Islands	2 (2)	862 (3)

§Only includes cases meeting the probable or confirmed CSTE case definition and does not include asymptomatic infections unless the case is a pregnant woman with a complication of pregnancy

\*Travelers returning from affected areas, their sexual contacts, or infants infected in utero

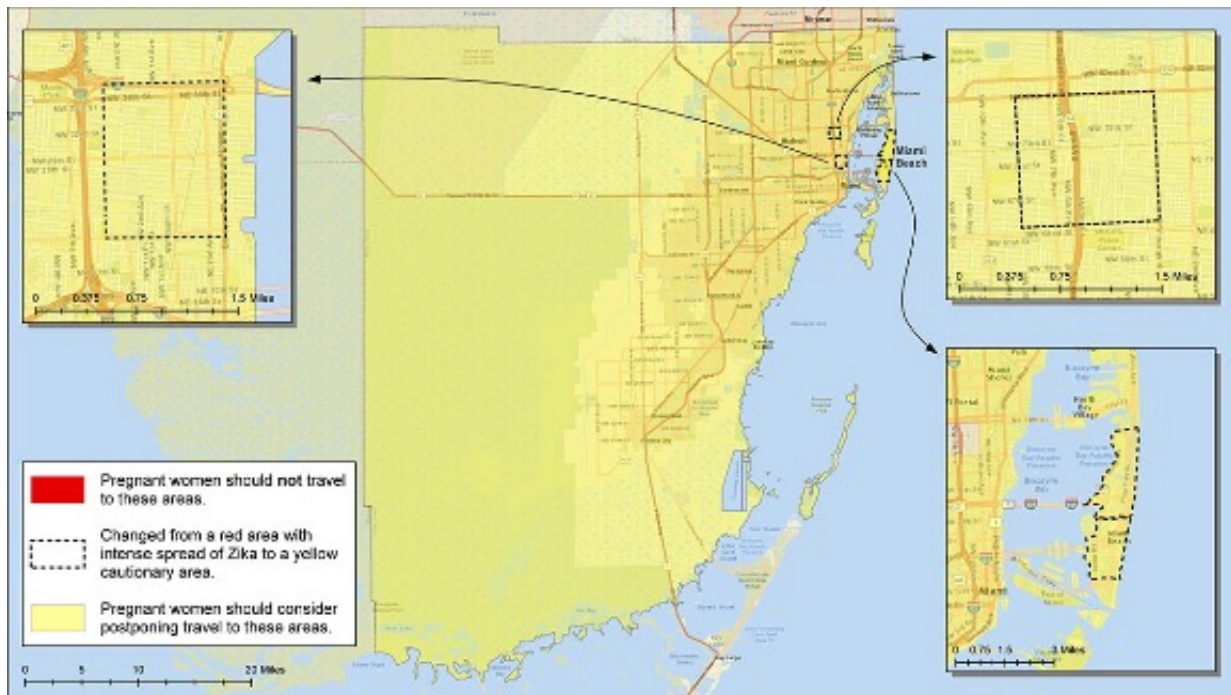
†Presumed local mosquito-borne transmission

††One additional case acquired through laboratory transmission

\*\*Includes one case with unknown route of person-to-person transmission.

\*\*\*The Puerto Rico Department of Health is retroactively reporting cases, resulting in larger than normal increases in cases in recent weeks.

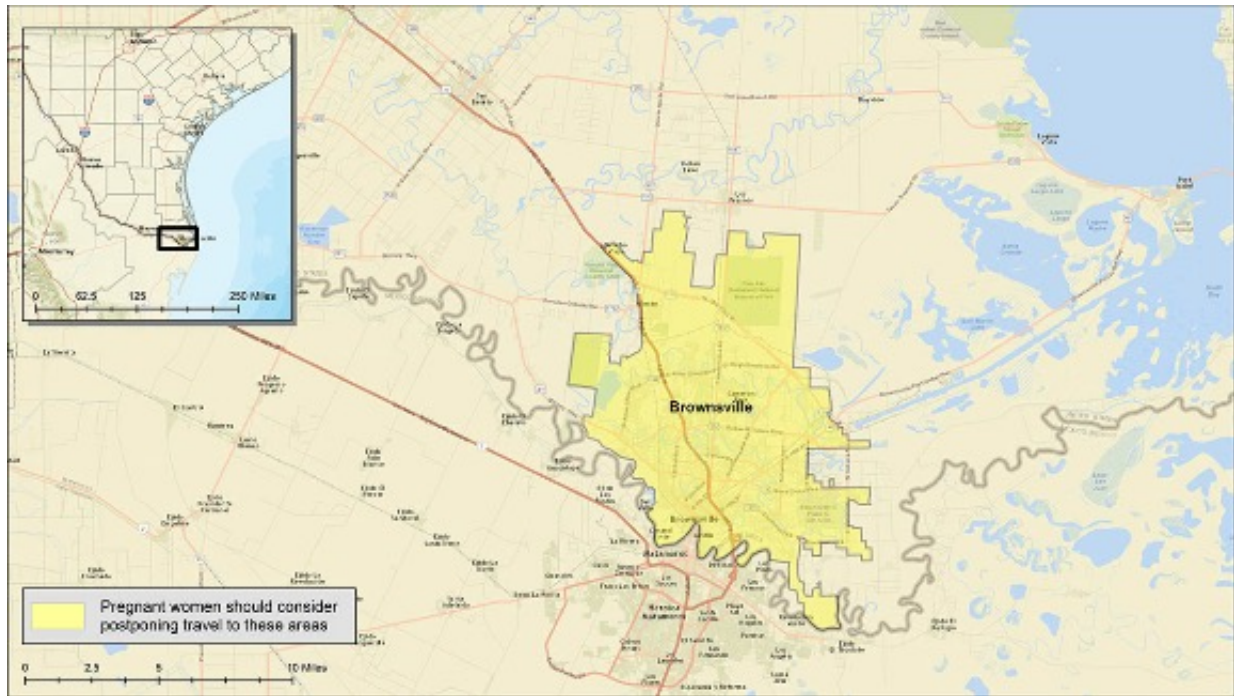
## Active Zika Virus Transmission in Florida



<https://www.cdc.gov/zika/intheus/florida-maps.html>

Miami-Dade County, FL. Red shows areas where pregnant women should not travel. Yellow shows areas where pregnant women should consider postponing travel.

## Zika Cautionary area in Brownsville, TX



<https://www.cdc.gov/zika/intheus/texas-update.html>

Brownsville, TX. Yellow shows areas where pregnant women should consider postponing travel.