

FIG E1. Algorithm for screening for the presence of cockroaches. This is an iterative process. Exposure and associated risk factors can vary over time.

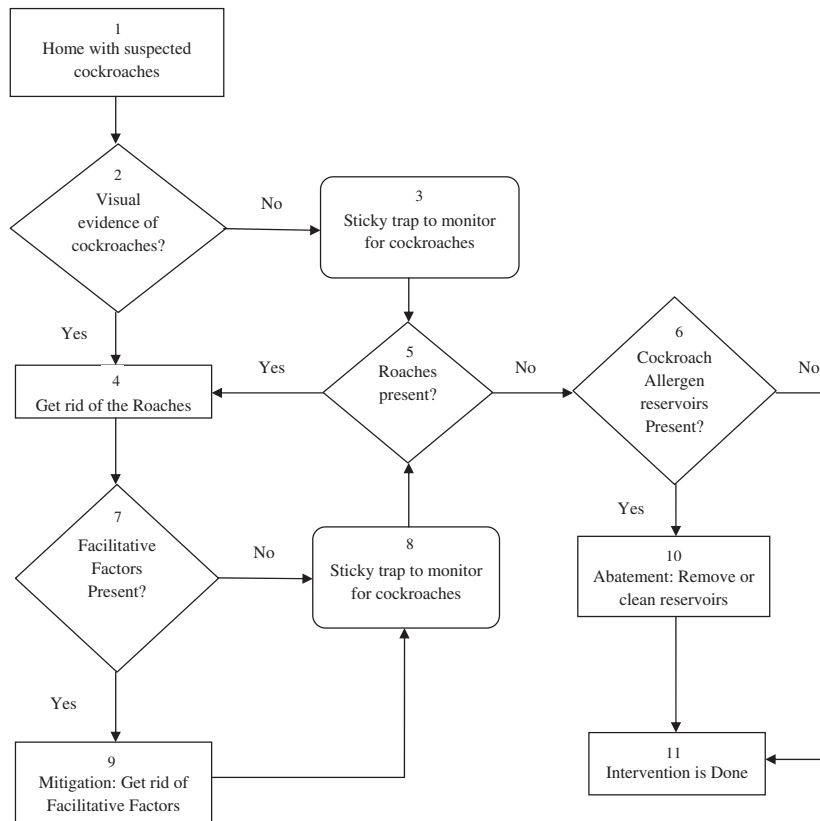


FIG E2. Environmental assessment algorithm. This is an iterative process. Exposure and associated risk factors can vary over time.

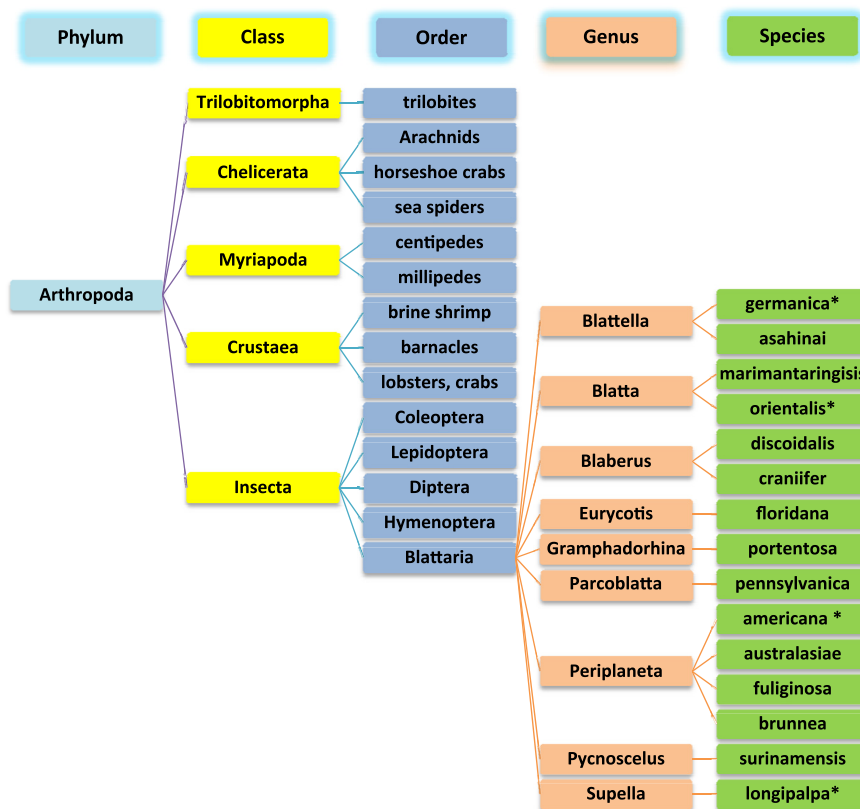


FIG E3. Taxonomy of cockroaches. *Significant indoor allergens.

TABLE E1. Techniques for cockroach allergen reduction

Block means of ingress
• Caulk and seal cracks and holes on the building's exterior
• Install door sweeps and weatherproofing seals on exterior doors and garage doors
• Screen and weatherproof windows and attic vents
• Remove excess vegetation and prune branches that touch the building
Withhold sources of food and water
• Properly store food in sealed containers
• Maintain regular cleaning schedules
• Regularly dispose of garbage
• Promptly repair water leaks
• Place stoppers in all drains and promptly wipe up spills
Eliminate shelter
• Move firewood, lumber, and trash cans away from the building
• Keep basements and crawl spaces free of clutter
• Keep gutters clean and well maintained
Eliminate contaminant sources
• Use sticky traps to monitor and trap cockroaches
• Judiciously use insecticides
Reservoirs
• Use HEPA vacuuming to remove cockroach contaminants
• Use mattress covers
• Remove contaminated materials
Public policy
• Legal housing codes (development and enforcement)
• City housing and environmental commissions
• Neighborhood housing coalitions

Adapted in part from Sheehan et al.⁷⁸