

POLIOMYELITIS SURVEILLANCE REPORT THIRD YEAR NO.107 MARCH 15, 1957

FOR OFFICIAL USE ONLY

U. S. Department of Health, Education and Welfare
Public Health Service Bureau of State Services

Communicable Disease Center
Poliomyelitis Surveillance Unit
50 Seventh Street, N.E.
Atlanta, Georgia

SPECIAL NOTE

The information in this report represents a factual summary of data reported to the Poliomyelitis Surveillance Unit from State Health Departments, Epidemic Intelligence Service Officers, participating Laboratories and other pertinent sources. All readers should be cautioned regarding the interpretation of these data, many of which are preliminary and provisional in nature. It is understood that the contents of these reports will not be released to the press, except by the Office of the Surgeon General, Public Health Service, U. S. Department of Health, Education and Welfare. State Health Officers, of course, are free to release any information they may wish concerning data from their state.

Table of Contents

- I. Current Poliomyelitis Morbidity Trends
- II. Routine Poliomyelitis Surveillance
- III. Vaccine Distribution

I. Current Poliomyelitis Morbidity Trends

Poliomyelitis incidence by weeks for 1957, with similar data for the first five months of the five preceding years, is presented in Figure 1. National incidence has continued at a low level for the past two weeks. The National Office of Vital Statistics received reports of 37 cases for the week ending March 2, and 30 cases for the week ending March 9.

Table 1 presents reported incidence for the past six weeks by states and regions, with six-week totals for the previous four years.

II. Routine Poliomyelitis Surveillance

A total of three new under-30-day cases was reported during the period February 28 through March 13. Of these three cases, two were paralytic and one was non-paralytic. The vaccine manufacturer and lot number were unknown for one of the paralytic cases. The other paralytic case followed inoculation with Sharpe and Dohme vaccine; there have been no other paralytic cases in association with this lot. These new cases are presented in the table below, together with the total cases vaccinated in 1956 or 1957 with onsets within 30 days of an inoculation.

Poliomyelitis Cases with Onsets within 30 Days of a Vaccination in 1956 or 1957 by Vaccine Manufacturer*** and Paralytic Status

Date of Report to PSU	L		PD		PM		SD		W		Unk.	
	P	NP	P	NP	P	NP	P	NP	P	NP	P	NP
CASES VACCINATED JANUARY TO JUNE 1956												
Total through 3-13	55	36	5	2	10	5	0	2	3	4	6	7
CASES VACCINATED AFTER JUNE 1956												
Through 2-27	136**	168*	9	9	14	21	0	10	7	7	24	22
2-28 to 3-13	0	1	0	0	0	0	0	0	0	0	0	0
Total through 3-13	136	169	9	9	14	21	0	10	7	7	24	22
CASES VACCINATED 1-1-57 OR LATER												
Through 3-13	0	0	0	0	0	0	1	0	0	0	1	0
Grand Totals	191	205	14	11	24	26	1	12	10	11	31	29
	396		25		50		13		21		60	

* Including three cases associated with Lilly or Pitman-Moore and one with Lilly or Wyeth.

** Including one case vaccinated with part Lilly and part Wyeth vaccine.

*** L - Lilly, PD - Parke, Davis, PM - Pitman-Moore, SD - Sharpe & Dohme, W - Wyeth, Unk - Unknown manufacturer.

III. Vaccine Distribution

A summary of current and cumulative shipments of vaccine (in 1,000's of cc's of net bottled vaccine) appears in Table 2. Excluding export, over 16 million cc's were shipped during February. The amount of vaccine shipped during the week of March 1, 1957 (5 million cc's) was larger than that shipped in any **previous** week.

(This report was prepared by H. Forester, with assistance from the Statistics Section, CDC.)

State	February		March 1-7, 1957		Total	
	Shipped	Inventory	Shipped	Inventory	Shipped	Inventory
Alabama	1	1	1	1	2	2
Arizona	1	1	1	1	2	2
Arkansas	1	1	1	1	2	2
California	1	1	1	1	2	2
Colorado	1	1	1	1	2	2
Connecticut	1	1	1	1	2	2
Delaware	1	1	1	1	2	2
District of Columbia	1	1	1	1	2	2
Florida	1	1	1	1	2	2
Georgia	1	1	1	1	2	2
Idaho	1	1	1	1	2	2
Illinois	1	1	1	1	2	2
Indiana	1	1	1	1	2	2
Iowa	1	1	1	1	2	2
Kansas	1	1	1	1	2	2
Kentucky	1	1	1	1	2	2
Louisiana	1	1	1	1	2	2
Maine	1	1	1	1	2	2
Maryland	1	1	1	1	2	2
Massachusetts	1	1	1	1	2	2
Michigan	1	1	1	1	2	2
Minnesota	1	1	1	1	2	2
Mississippi	1	1	1	1	2	2
Missouri	1	1	1	1	2	2
Montana	1	1	1	1	2	2
Nebraska	1	1	1	1	2	2
Nevada	1	1	1	1	2	2
New Hampshire	1	1	1	1	2	2
New Jersey	1	1	1	1	2	2
New Mexico	1	1	1	1	2	2
New York	1	1	1	1	2	2
North Carolina	1	1	1	1	2	2
North Dakota	1	1	1	1	2	2
Ohio	1	1	1	1	2	2
Oklahoma	1	1	1	1	2	2
Oregon	1	1	1	1	2	2
Pennsylvania	1	1	1	1	2	2
Rhode Island	1	1	1	1	2	2
South Carolina	1	1	1	1	2	2
South Dakota	1	1	1	1	2	2
Tennessee	1	1	1	1	2	2
Texas	1	1	1	1	2	2
Utah	1	1	1	1	2	2
Vermont	1	1	1	1	2	2
Virginia	1	1	1	1	2	2
Washington	1	1	1	1	2	2
West Virginia	1	1	1	1	2	2
Wisconsin	1	1	1	1	2	2
Wyoming	1	1	1	1	2	2

Table 1

TREND OF 1957 POLIOMYELITIS INCIDENCE

State and Region	Cases Reported to NOVS* for Week Ending:						Six Week Total	Comparable Six Week Totals in:			
	2-2	2-9	2-16	2-23	3-2	3-9		1956	1955	1954	1953
UNITED STATES	53	49	45	34	37	30	248	424	393	669	593
NORTH EAST	4	-	2	1	3	3	13	37	54	84	51
Maine	1	-	-	-	-	-	1	1	1	-	-
New Hampshire	-	-	-	-	-	-	-	-	2	1	-
Vermont	-	-	-	-	-	-	-	2	1	-	-
Massachusetts	-	-	-	-	-	1	1	7	4	10	3
Rhode Island	-	-	-	-	-	-	-	-	-	2	-
Connecticut	1	-	-	-	-	-	1	-	2	5	2
New York	2	-	2	-	1	2	7	18	24	41	30
New Jersey	-	-	-	1	-	-	1	4	7	5	2
Pennsylvania	-	-	-	-	2	-	2	5	13	20	14
NORTH CENTRAL	11	11	11	6	15	2	56	58	69	125	133
Ohio	-	2	-	-	1	-	3	9	13	28	27
Indiana	-	-	-	2	4	-	6	5	5	5	11
Illinois	3	1	-	2	-	-	6	5	6	15	12
Michigan	2	5	3	1	1	1	13	12	9	18	29
Wisconsin	1	-	1	-	2	-	4	1	2	8	8
Minnesota	-	-	-	-	-	-	-	3	6	17	6
Iowa	2	-	-	-	-	-	2	4	6	12	5
Missouri	1	1	5	-	-	-	7	8	5	4	8
North Dakota	-	-	-	-	-	-	-	1	-	3	2
South Dakota	-	-	-	-	2	-	2	5	3	6	13
Nebraska	2	2	2	1	2	1	10	1	8	3	8
Kansas	-	-	-	-	3	-	3	4	6	6	4
NORTH WEST	-	3	2	1	2	-	8	23	22	50	28
Montana	-	-	1	-	-	-	1	-	2	18	2
Wyoming	-	-	-	-	1	-	1	2	3	1	5
Idaho	-	-	-	1	-	-	1	2	4	5	5
Washington	-	-	-	-	-	-	-	8	5	12	8
Oregon	-	3	1	-	1	-	5	11	8	14	8

* National Office of Vital Statistics.

(CONTINUED ON BACK)

CURRENT U.S. POLIO INCIDENCE
 COMPARE 1952-1956

Table 1 (Continued)

State and Region	Cases Reported to NOVS* for Week Ending:						Six Week Total	Comparable Six Week Totals in:			
	2-2	2-9	2-16	2-23	3-2	3-9		1956	1955	1954	1953
SOUTH EAST	12	15	14	4	2	2	49	48	80	124	81
Delaware	-	-	-	-	-	-	-	-	-	-	-
Maryland	-	-	-	-	-	-	-	-	2	1	1
D. C.	-	-	-	-	-	-	-	-	-	-	-
Virginia	1	1	1	-	-	-	3	2	4	8	1
West Virginia	-	3	-	-	-	1	4	2	1	7	8
North Carolina	4	1	2	-	-	1	8	9	10	8	13
South Carolina	2	2	5	-	1	-	10	3	3	4	3
Georgia	2	5	1	1	-	-	9	3	6	7	12
Florida	3	1	4	3	-	-	11	17	30	61	26
Kentucky	-	-	-	-	-	-	-	6	13	16	11
Tennessee	-	1	1	-	-	-	2	6	6	4	4
Alabama	-	1	-	-	1	-	2	-	5	8	2
SOUTH CENTRAL	12	13	9	9	9	14	66	91	67	109	63
Mississippi	3	-	1	1	1	2	8	9	10	8	9
Arkansas	-	-	1	-	-	-	1	5	2	8	6
Louisiana	2	1	1	-	2	4	10	15	9	10	5
Oklahoma	-	-	1	1	1	1	4	4	4	9	11
Texas	7	12	5	7	5	7	43	58	42	74	32
SOUTH WEST	14	7	7	13	6	9	56	167	101	177	237
Colorado	-	3	-	-	-	-	3	4	6	7	3
New Mexico	1	-	-	-	-	-	1	2	1	3	3
Arizona	-	-	-	3	2	1	6	11	2	4	11
Utah	-	-	-	1	-	1	2	2	5	4	21
Nevada	-	-	-	-	-	-	-	-	2	-	-
California	13	4	7	9	4	7	44	148	85	159	199
TERRITORIES											
Alaska	-	-	-	-	-	-	-	1	2	14	3
Hawaii	1	-	1	-	-	-	2	17	4	36	1
Puerto Rico	1	-	-	-	-	-	1	5	130	7	7

* National Office of Vital Statistics

Table 2

Poliomyelitis Vaccine Shipment Summary

(Reports from Polio Vaccine Activity, BSS, USPHS, through 3-8-57)

Period	Vaccine Shipments (in 1000's of cc's)				Export *****	Total
	NFIP**** Sponsored Clinics	Public Agencies	Commercial Channels			
1955	13,541	7,893	6,233***	-	27,667	
1956						
First Ten Months	193	42,649	21,913	4,159	68,914	
November	1	1,364	1,260	418	3,043	
December	-	1,575	1,611	1,900	5,086	
1956 Totals	194	45,588	24,784	6,477	77,043	
1957						
January	2	4,705	4,243	2,111	11,061	
February	3	9,934	6,100	544	16,581	
Cumulative Totals	13,739	68,121	41,359	9,132	132,352	
Vaccine Cleared for distribution by the National Institutes of Health but not shipped by 3-1-57					8,600	

* Totals do not add because figures are rounded to nearest 1000 cc's

** Less than 1000 cc's.

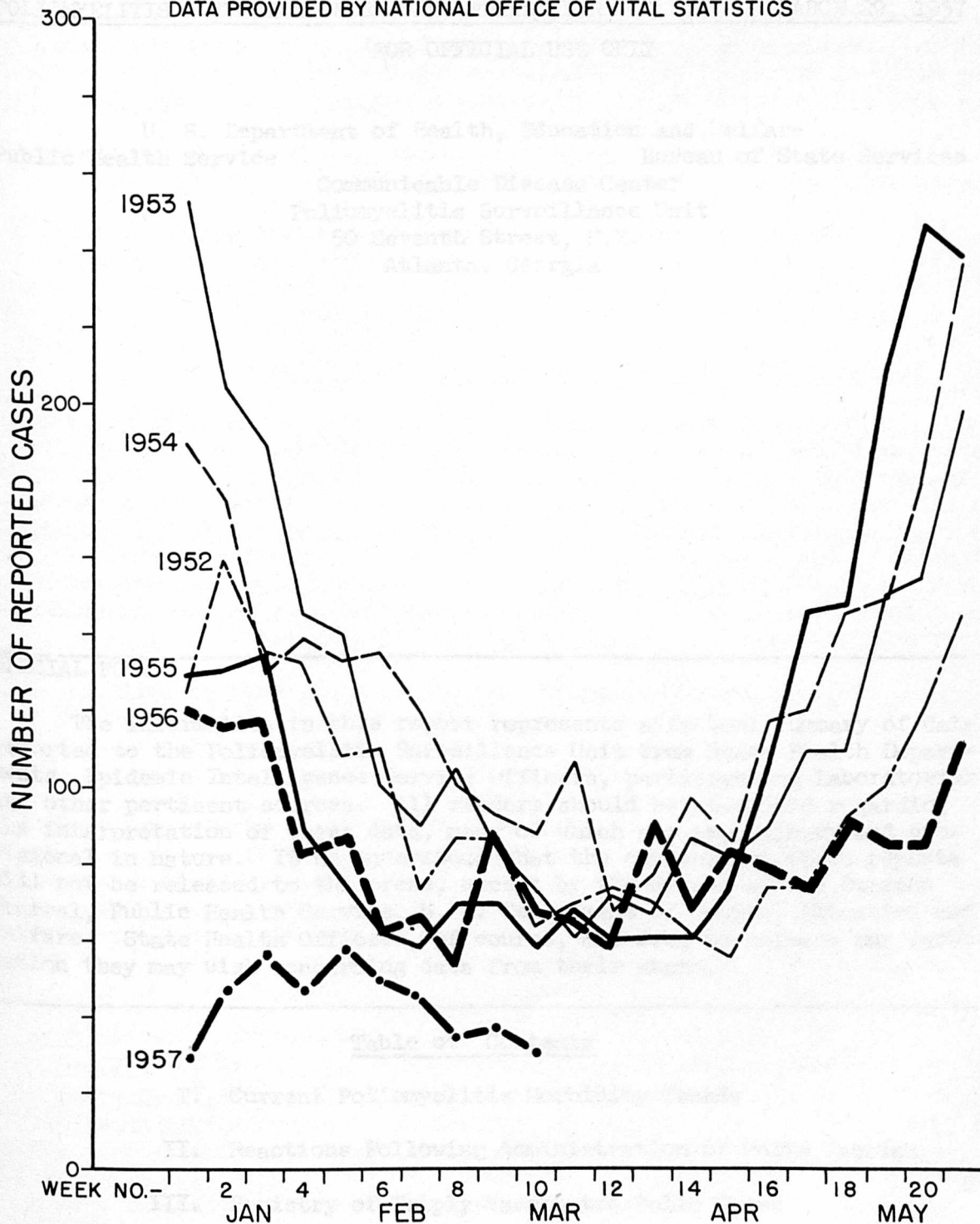
*** Includes 562,740 cc's shipped through commercial channels prior to inauguration of the Interstate Distribution Program in August, 1955.

**** Vaccine purchased by the National Foundation for Infantile Paralysis and distributed for inoculation of first and second grade children in locally organized school clinics.

***** Regulated under Department of Commerce Export policy.

CURRENT U.S. POLIO INCIDENCE COMPARED WITH YEARS 1952-1956

DATA PROVIDED BY NATIONAL OFFICE OF VITAL STATISTICS



CURRENT U.S. POLIO INCIDENCE COMPARED WITH YEARS 1952-1956

DATA PROVIDED BY NATIONAL OFFICE OF VITAL STATISTICS

(7-3-4-1956, 1957, 1958, 1959, 1960, 1961, 1962, 1963, 1964, 1965, 1966, 1967, 1968, 1969, 1970, 1971, 1972, 1973, 1974, 1975, 1976, 1977, 1978, 1979, 1980, 1981, 1982, 1983, 1984, 1985, 1986, 1987, 1988, 1989, 1990, 1991, 1992, 1993, 1994, 1995, 1996, 1997, 1998, 1999, 2000, 2001, 2002, 2003, 2004, 2005, 2006, 2007, 2008, 2009, 2010, 2011, 2012, 2013, 2014, 2015, 2016, 2017, 2018, 2019, 2020, 2021, 2022, 2023, 2024, 2025, 2026, 2027, 2028, 2029, 2030, 2031, 2032, 2033, 2034, 2035, 2036, 2037, 2038, 2039, 2040, 2041, 2042, 2043, 2044, 2045, 2046, 2047, 2048, 2049, 2050, 2051, 2052, 2053, 2054, 2055, 2056, 2057, 2058, 2059, 2060, 2061, 2062, 2063, 2064, 2065, 2066, 2067, 2068, 2069, 2070, 2071, 2072, 2073, 2074, 2075, 2076, 2077, 2078, 2079, 2080, 2081, 2082, 2083, 2084, 2085, 2086, 2087, 2088, 2089, 2090, 2091, 2092, 2093, 2094, 2095, 2096, 2097, 2098, 2099, 2100, 2101, 2102, 2103, 2104, 2105, 2106, 2107, 2108, 2109, 2110, 2111, 2112, 2113, 2114, 2115, 2116, 2117, 2118, 2119, 2120, 2121, 2122, 2123, 2124, 2125, 2126, 2127, 2128, 2129, 2130, 2131, 2132, 2133, 2134, 2135, 2136, 2137, 2138, 2139, 2140, 2141, 2142, 2143, 2144, 2145, 2146, 2147, 2148, 2149, 2150, 2151, 2152, 2153, 2154, 2155, 2156, 2157, 2158, 2159, 2160, 2161, 2162, 2163, 2164, 2165, 2166, 2167, 2168, 2169, 2170, 2171, 2172, 2173, 2174, 2175, 2176, 2177, 2178, 2179, 2180, 2181, 2182, 2183, 2184, 2185, 2186, 2187, 2188, 2189, 2190, 2191, 2192, 2193, 2194, 2195, 2196, 2197, 2198, 2199, 2200, 2201, 2202, 2203, 2204, 2205, 2206, 2207, 2208, 2209, 2210, 2211, 2212, 2213, 2214, 2215, 2216, 2217, 2218, 2219, 2220, 2221, 2222, 2223, 2224, 2225, 2226, 2227, 2228, 2229, 2230, 2231, 2232, 2233, 2234, 2235, 2236, 2237, 2238, 2239, 2240, 2241, 2242, 2243, 2244, 2245, 2246, 2247, 2248, 2249, 2250, 2251, 2252, 2253, 2254, 2255, 2256, 2257, 2258, 2259, 2260, 2261, 2262, 2263, 2264, 2265, 2266, 2267, 2268, 2269, 2270, 2271, 2272, 2273, 2274, 2275, 2276, 2277, 2278, 2279, 2280, 2281, 2282, 2283, 2284, 2285, 2286, 2287, 2288, 2289, 2290, 2291, 2292, 2293, 2294, 2295, 2296, 2297, 2298, 2299, 2300, 2301, 2302, 2303, 2304, 2305, 2306, 2307, 2308, 2309, 2310, 2311, 2312, 2313, 2314, 2315, 2316, 2317, 2318, 2319, 2320, 2321, 2322, 2323, 2324, 2325, 2326, 2327, 2328, 2329, 2330, 2331, 2332, 2333, 2334, 2335, 2336, 2337, 2338, 2339, 2340, 2341, 2342, 2343, 2344, 2345, 2346, 2347, 2348, 2349, 2350, 2351, 2352, 2353, 2354, 2355, 2356, 2357, 2358, 2359, 2360, 2361, 2362, 2363, 2364, 2365, 2366, 2367, 2368, 2369, 2370, 2371, 2372, 2373, 2374, 2375, 2376, 2377, 2378, 2379, 2380, 2381, 2382, 2383, 2384, 2385, 2386, 2387, 2388, 2389, 2390, 2391, 2392, 2393, 2394, 2395, 2396, 2397, 2398, 2399, 2400, 2401, 2402, 2403, 2404, 2405, 2406, 2407, 2408, 2409, 2410, 2411, 2412, 2413, 2414, 2415, 2416, 2417, 2418, 2419, 2420, 2421, 2422, 2423, 2424, 2425, 2426, 2427, 2428, 2429, 2430, 2431, 2432, 2433, 2434, 2435, 2436, 2437, 2438, 2439, 2440, 2441, 2442, 2443, 2444, 2445, 2446, 2447, 2448, 2449, 2450, 2451, 2452, 2453, 2454, 2455, 2456, 2457, 2458, 2459, 2460, 2461, 2462, 2463, 2464, 2465, 2466, 2467, 2468, 2469, 2470, 2471, 2472, 2473, 2474, 2475, 2476, 2477, 2478, 2479, 2480, 2481, 2482, 2483, 2484, 2485, 2486, 2487, 2488, 2489, 2490, 2491, 2492, 2493, 2494, 2495, 2496, 2497, 2498, 2499, 2500, 2501, 2502, 2503, 2504, 2505, 2506, 2507, 2508, 2509, 2510, 2511, 2512, 2513, 2514, 2515, 2516, 2517, 2518, 2519, 2520, 2521, 2522, 2523, 2524, 2525, 2526, 2527, 2528, 2529, 2530, 2531, 2532, 2533, 2534, 2535, 2536, 2537, 2538, 2539, 2540, 2541, 2542, 2543, 2544, 2545, 2546, 2547, 2548, 2549, 2550, 2551, 2552, 2553, 2554, 2555, 2556, 2557, 2558, 2559, 2560, 2561, 2562, 2563, 2564, 2565, 2566, 2567, 2568, 2569, 2570, 2571, 2572, 2573, 2574, 2575, 2576, 2577, 2578, 2579, 2580, 2581, 2582, 2583, 2584, 2585, 2586, 2587, 2588, 2589, 2590, 2591, 2592, 2593, 2594, 2595, 2596, 2597, 2598, 2599, 2600, 2601, 2602, 2603, 2604, 2605, 2606, 2607, 2608, 2609, 2610, 2611, 2612, 2613, 2614, 2615, 2616, 2617, 2618, 2619, 2620, 2621, 2622, 2623, 2624, 2625, 2626, 2627, 2628, 2629, 2630, 2631, 2632, 2633, 2634, 2635, 2636, 2637, 2638, 2639, 2640, 2641, 2642, 2643, 2644, 2645, 2646, 2647, 2648, 2649, 2650, 2651, 2652, 2653, 2654, 2655, 2656, 2657, 2658, 2659, 2660, 2661, 2662, 2663, 2664, 2665, 2666, 2667, 2668, 2669, 2670, 2671, 2672, 2673, 2674, 2675, 2676, 2677, 2678, 2679, 2680, 2681, 2682, 2683, 2684, 2685, 2686, 2687, 2688, 2689, 2690, 2691, 2692, 2693, 2694, 2695, 2696, 2697, 2698, 2699, 2700, 2701, 2702, 2703, 2704, 2705, 2706, 2707, 2708, 2709, 2710, 2711, 2712, 2713, 2714, 2715, 2716, 2717, 2718, 2719, 2720, 2721, 2722, 2723, 2724, 2725, 2726, 2727, 2728, 2729, 2730, 2731, 2732, 2733, 2734, 2735, 2736, 2737, 2738, 2739, 2740, 2741, 2742, 2743, 2744, 2745, 2746, 2747, 2748, 2749, 2750, 2751, 2752, 2753, 2754, 2755, 2756, 2757, 2758, 2759, 2760, 2761, 2762, 2763, 2764, 2765, 2766, 2767, 2768, 2769, 2770, 2771, 2772, 2773, 2774, 2775, 2776, 2777, 2778, 2779, 2780, 2781, 2782, 2783, 2784, 2785, 2786, 2787, 2788, 2789, 2790, 2791, 2792, 2793, 2794, 2795, 2796, 2797, 2798, 2799, 2800, 2801, 2802, 2803, 2804, 2805, 2806, 2807, 2808, 2809, 2810, 2811, 2812, 2813, 2814, 2815, 2816, 2817, 2818, 2819, 2820, 2821, 2822, 2823, 2824, 2825, 2826, 2827, 2828, 2829, 2830, 2831, 2832, 2833, 2834, 2835, 2836, 2837, 2838, 2839, 2840, 2841, 2842, 2843, 2844, 2845, 2846, 2847, 2848, 2849, 2850, 2851, 2852, 2853, 2854, 2855, 2856, 2857, 2858, 2859, 2860, 2861, 2862, 2863, 2864, 2865, 2866, 2867, 2868, 2869, 2870, 2871, 2872, 2873, 2874, 2875, 2876, 2877, 2878, 2879, 2880, 2881, 2882, 2883, 2884, 2885, 2886, 2887, 2888, 2889, 2890, 2891, 2892, 2893, 2894, 2895, 2896, 2897, 2898, 2899, 2900, 2901, 2902, 2903, 2904, 2905, 2906, 2907, 2908, 2909, 2910, 2911, 2912, 2913, 2914, 2915, 2916, 2917, 2918, 2919, 2920, 2921, 2922, 2923, 2924, 2925, 2926, 2927, 2928, 2929, 2930, 2931, 2932, 2933, 2934, 2935, 2936, 2937, 2938, 2939, 2940, 2941, 2942, 2943, 2944, 2945, 2946, 2947, 2948, 2949, 2950, 2951, 2952, 2953, 2954, 2955, 2956, 2957, 2958, 2959, 2960, 2961, 2962, 2963, 2964, 2965, 2966, 2967, 2968, 2969, 2970, 2971, 2972, 2973, 2974, 2975, 2976, 2977, 2978, 2979, 2980, 2981, 2982, 2983, 2984, 2985, 2986, 2987, 2988, 2989, 2990, 2991, 2992, 2993, 2994, 2995, 2996, 2997, 2998, 2999, 3000)

(Number of cases in 1000)

