



Published in final edited form as:

Breast Cancer Res Treat. 2014 April ; 144(3): 625–634. doi:10.1007/s10549-014-2882-1.

Heterogeneity of breast cancer subtypes and survival among Hispanic women with invasive breast cancer in California

Matthew P. Banegas, PhD, MPH, MS^{1,*}, Li Tao, MD, MS, PhD², Sean Altekruze, DVM, MPH, PhD, DACVPM³, William F. Anderson, MD, MPH¹, Esther M. John, PhD, MSPH^{2,4}, Christina A. Clarke, PhD, MPH^{2,4}, and Scarlett L. Gomez, PhD^{2,4}

¹Division of Cancer Epidemiology and Genetics, National Cancer Institute, Bethesda, MD

²Cancer Prevention Institute of California, Fremont CA

³Surveillance Research Program, Division of Cancer Control and Population Sciences, National Cancer Institute, Bethesda, MD

⁴Division of Epidemiology, Department of Health Research and Policy, Stanford University School of Medicine, Stanford, CA

Abstract

Purpose—There are limited data regarding breast cancer subtypes among Hispanic women. The current study assessed the distribution and prognosis of molecular subtypes defined by joint expression of the hormone receptors (HR; estrogen and progesterone) and human epidermal growth factor receptor 2 (HER2).

Methods—Using California Cancer Registry data, we identified Hispanic women diagnosed with invasive breast cancer from 2005–2010. Breast cancer subtypes were defined as HR+/HER2–, HR+/HER2+, HR–/HER2+, and HR–/HER2– (triple negative). We estimated breast cancer subtype frequencies and used polytomous logistic regression, Kaplan Meier survival plots and Cox regression to examine differences in relation to demographic and clinical characteristics.

Results—Among 16,380 Hispanic women with breast cancer, HR+/HER– subtype was most common (63%), followed by triple negative (16%), HR+/HER2+ (14%) and HR–/HER2+ (8%). Women in lower SES neighborhoods had greater risk of triple negative and HR–/HER2+ subtypes relative to HR+/HER2– ($p < 0.05$). Hispanic women with triple negative and HR–/HER2+ tumors experienced poorer survival than those with HR+/HER– tumors. Breast cancer-specific mortality increased with decreasing SES, relative to the highest SES quintile, from HR=1.38 for quintile 4 to HR=1.76 for quintile 1 (lowest SES level).

Conclusion—Our findings indicate that Hispanic women residing in low SES neighborhoods had significantly increased risk of developing and dying from HR– than HR+ breast cancers. Similar patterns of subtype frequency and prognosis among California Hispanic women and

*Corresponding author: MPB: National Cancer Institute, 9609 Medical Center Drive, MSC 9762, Bethesda, MD 20892-9762, Office: (240) 276-6875, Fax: (240) 276-7906, banegasmp@mail.nih.gov.

The authors have no conflicts of interest to disclose.

studies of other racial/ethnic groups underscore the need to better understand the impact of SES on risk factor exposures that increase the risk of breast cancer subtypes with poor prognosis.

Keywords

breast cancer; Hispanic; Latina; socioeconomic status; triple negative

Introduction

Hispanic women may be prone to developing breast cancer molecular subtypes (defined by estrogen receptor (ER), progesterone receptor (PR), and human epidermal growth factor receptor 2 (HER2)) associated with poor prognosis, such as ER-/PR-, and triple negative (ER-/PR-/HER2-) breast cancers [1-3]. Studies among Hispanics point to a 20%-40% increased risk of developing triple negative and ER-/PR- breast cancers, compared to non-Hispanic white women [3,2]. Women diagnosed with ER-/PR- or triple negative tumors have significantly greater risk of death than more favorable prognosis subtypes (i.e., ER+/PR+) [4,5]. Thus, defining the population-based distribution of breast cancer subtypes among Hispanic women provides information of clinical, prognostic and therapeutic value.

However, only two studies have examined the patterns of breast cancer subtypes among Hispanic women [6,7]. Hines and colleagues assessed breast tumors of 69 Hispanic women [6], and found that the four most prevalent subtypes were ER+/PR+/HER2- (41%), triple negative (17%), ER-/PR-/HER2+ (15%) and ER+/PR+/HER2+ (13%). Ortiz et al. showed a similar subtype distribution among 663 women with breast cancer in Puerto Rico, and reported a higher risk of death for triple negative and ER+/PR+/HER2+ tumors, compared to the ER+/PR+/HER2- subtype [7]. To expand on this work, data from the California Cancer Registry (CCR) on 16,380 Hispanic women diagnosed with invasive breast cancer were used to characterize the molecular subtypes defined by joint hormone receptor (HR) and HER2 status. Our objective was to conduct a large, population-based assessment of the distribution and survival by breast cancer subtype and examine associations with demographic and clinical attributes.

Methods

Study population

We obtained data from the CCR on all Hispanic female California residents aged 25 years and older, diagnosed with a first primary invasive breast cancer between 2005-2010. Patient sociodemographic information included age at diagnosis, race/ethnicity, birthplace, insurance status, marital status and residential address at diagnosis. Race/ethnicity and birthplace data are abstracted from medical records or death certificates [8]. The North American Association of Central Cancer Registries Hispanic Identification Algorithm (NHIA) was used to improve the classification of Hispanic ethnicity [9]. Patient clinical information included American Joint Committee on Cancer (AJCC) stage, tumor grade, tumor size, lymph node involvement, tumor metastasis and first course of treatment (surgery, chemotherapy and radiation).

Nativity—Patient nativity was classified as previously described [10], based on: (1) cancer registry-based data from medical records and/or death certificates and (2) imputation using the first five digits of the patient's social security number (SSN), for those with unknown birthplace (34.5%). SSN digits are linked to the state and year of issuance, from which nativity was imputed as follows: Women who received their SSN before age 21 years were considered United States (U.S.)-born, whereas those who received their SSN on or after age 21 years as foreign-born. The age threshold was determined and validated based on a prior cohort of Hispanic cancer patients [11].

Neighborhood socioeconomic status (SES) and Hispanic enclave—Each patient's residential address at diagnosis was geocoded to a census block group. Participants with incomplete residential address information (7.3%) were assigned an SES value based on their county of residence. Neighborhood SES was determined based on an index that incorporates 2000 Census (for cases diagnosed in 2005) and 2006–2010 American Community Survey data (for cases diagnosed after 2005) on education, occupation, unemployment, household income, poverty, rent, and house values [22]. Hispanic enclave was based on 2000 Census variables (% linguistically isolated, % linguistically isolated who speak Spanish, % speaking limited English, % speaking limited English who spoke Spanish, % recent immigrants, % Hispanic, % foreign-born), developed via principal components analysis. Participants were assigned to a neighborhood SES quintile and Hispanic enclave quintile based on the distribution of each variable across California block groups.

Breast cancer subtype definition—A detailed description of the methods used for classification of breast cancer subtypes has been published elsewhere [12]. Based on joint tumor expression of ER, PR, and HER2, as described in the pathology record, breast cancers were classified into four distinct subtype categories: HR+/HER2– was defined as ER+ or PR+ and HER2–; HR+/HER2+ as ER+ or PR+ and HER2+; HR–/HER2+ as ER– and PR– and HER2+; and triple negative as ER–, PR– and HER2– [13,14,15–17]. Participants missing the tumor marker information needed to assign to a subtype were excluded (n=3,253 (16.6%)).

Statistical analysis

Associations between Breast Cancer Subtypes and Patient Attributes

Adjusted polytomous regression models were used to estimate odds ratios (ORs) and 95% confidence intervals (CIs) by sociodemographic and clinical attributes for triple negative, HR+/HER2+ and HR–/HER2+ versus HR+/HER2– subtypes. Tests for trend were considered statistically significant at $p < 0.05$.

Kaplan-Meier survival curves depicting time from diagnosis to death were calculated for triple negative, HR+/HER2+ and HR–/HER2+ versus HR+/HER2– subtypes. Surviving Participants were censored at the time of last known follow-up. Wilcoxon rank order test was used to test homogeneity of survival by subtype (SAS Institute v 9.3, Cary, NC).

Adjusted Cox proportional hazard modeling was performed to estimate the risk of death from breast cancer for all subtypes adjusted for patient sociodemographic and clinical characteristics. Survival time, in months, was defined as time from diagnosis to whichever

of the following occurred first: death from breast cancer, last known contact, death due to other causes, or end of study follow-up (December 31, 2010). We tested the proportionality assumption using scaled Schoenfeld residuals. AJCC stage levels were included in the models as a stratifying variable, allowing the underlying hazard function to vary by stage.

Results

HR+/HER2- was the most common subtype (62.6%), followed by triple negative (15.6%), HR+/HER2+ (13.8%) and HR-/HER2+ (8.1%) (Table 1). Over 50% of breast cancers were diagnosed among foreign-born Hispanics, overall and within each subtype, compared to U.S.-born Hispanics. Women in the lowest SES and highest Hispanic enclave neighborhoods comprised the greatest proportions of participants among all breast cancer subtypes.

Association between Breast Cancer Subtypes and Patient Attributes

Foreign-born Hispanic women were significantly more likely than U.S.-born Hispanic women to be diagnosed with HR-/HER2+ versus HR+/HER2- breast cancer (OR=1.17, 95% CI:1.02–1.35); other subtypes did not differ by nativity (Table 2). Compared to women living in the highest SES neighborhoods, those in lower SES neighborhoods had a 1.32–1.42 fold greater risk of triple negative ($p<0.05$) and 1.17–1.43 fold greater risk of HR-/HER2+ relative to HR+/HER2- breast cancer ($p<0.05$). Hispanic women aged 45–49 years had a lower risk of the triple negative (OR=0.72, 95% CI:0.60–0.87) and HR-/HER2+ (OR=0.59, 95% CI:0.47–0.75) subtypes, compared to women aged 50–54 years.

Breast Cancer-Specific Survival and Mortality by Breast Cancer Subtype

Breast cancer-specific survival significantly differed between tumor subtypes ($p<0.0001$; Figure 1). Over the approximately 5.5 years of follow-up, Hispanic women with triple negative and HR-/HER2+ breast cancer had the lowest probability of survival. After multivariate adjustment (Table 3), Hispanic women diagnosed with triple negative breast cancer were 4-times more likely to die from the disease compared to those diagnosed with the HR+/HER2- subtype (HR=4.05, 95% CI:3.35–4.90). Overall, the risk of death from breast cancer followed a step-wise pattern by SES, such that the risk of death from breast cancer increased as a woman's neighborhood SES level decreased; compared to quintile 5 (highest SES), HRs were 1.38 (95% CI:0.98–1.94) for quintile 4 and 1.76 (95% CI:1.25–2.49) for quintile 1.

For U.S.-born Hispanic women, the risk of breast cancer-specific mortality was significantly greater for all subtypes compared to HR+/HER2- tumors (Table 4), whereas, among foreign-born Hispanic women, only those diagnosed with triple negative and HR-/HER2+ subtypes had significantly increased risk of death from breast cancer.

Discussion

Our study is among the first, certainly the most comprehensive with 16,380 participants, population-based analyses of breast cancer subtypes among U.S. Hispanic women. These results confirm and extend emerging patterns for the molecular breast cancer subtypes.

Similar to other racial/ethnic groups [18,13,19,20], residence in a low SES neighborhood was significantly associated with an increased risk of diagnosis and dying from HR-/HER2+ and triple negative breast cancers. Foreign-born Hispanics were at greater risk of diagnosis with HR-/HER2+, compared to U.S.-born Hispanics. The risk of death from triple negative breast cancer was substantial, as both U.S.- and foreign-born Hispanic women diagnosed with this subtype had an approximately 4-fold greater risk of death than those with HR+/HER2- breast cancer.

Although our case-only analyses cannot speak directly to cancer etiology or risk, these data underscore the potential impact of SES, a social determinant of health, on risk factors that may be etiologically important in increasing women's risk of developing poor prognostic breast cancer subtypes. For instance, women of low SES status, or residing in low SES neighborhoods, may have lower access to and consume fewer healthy foods (i.e., vegetables and nutrient-rich foods), fewer opportunities to engage in physical activity, and higher levels of obesity [21,22], which studies indicate are associated with increased risk of ER- [23-25] or triple negative breast cancers [26]. Moreover, low SES may be related to younger age at first birth and lack of breastfeeding [27,28], factors associated with an elevated risk of triple negative or basal-like breast cancers [29-31].

Importantly, if socioeconomic differences play a role in the risk of developing certain tumor subtypes, then the breast cancer-specific mortality disadvantage observed among Hispanic and other racial/ethnic women may be partly due to the intrinsic aggressiveness of the tumor subtype, and the more commonly recognized factors associated with low SES or living in low SES neighborhoods [32]. Consistent with studies among other racial/ethnic groups [33,4,34,5], our study confirms the adverse characteristics of certain breast cancers, such that compared to the HR+/HER2- subtype, Hispanic women diagnosed with HR+/HER2+, HR-/HER2+, and triple negative subtypes had significantly greater risk of death.

While our study adds valuable information on breast cancer subtypes among Hispanic women, it has some limitations. Tumor subtype information was missing for approximately 16.6% of potentially eligible participants, although the magnitude and direction of biases related to missing data are unknown. We did not have individual-level data on income or education; nevertheless, neighborhood-level measures may capture information on environmental factors that occur as a result of its socioeconomic condition and deprivation [20]. The distribution of breast cancer subtypes among Hispanic women in California may not reflect distributions among other U.S. Hispanic women; accordingly, our findings may be most generalizable to women of primarily Mexican descent, the largest Hispanic subgroup in California [35]. The imputation method used to classify nativity is subject to error and may have led to some misclassification; however, most participants (about 65%) were classified based on cancer registry birthplace data, previously shown to have high accuracy [11,36]. Similarly, Hispanic ethnicity may be subject to misclassification [37,38], although classification should have improved with application of a registry-wide algorithm [9]. While Hispanics are a diverse population, we could not include information on Hispanic origin because it was missing for approximately 40% of participants. Breast cancer-specific survival analyses are subject to the accuracy of the underlying cause of death code, which has been shown to be 84-90% accurate [39,40]. Lastly, those tumor characteristics

associated with aggressive breast cancer subtypes, including HR– and younger age at diagnosis, are also associated with interval-detected cancers, which may lead to length bias and lower survival than screen-derived cancers [41,42].

Conclusion

In the largest population-based study of breast cancer subtypes among U.S. Hispanic women conducted to date, we found that residing in a low SES neighborhood was significantly associated with increased risk of developing and dying from HR– breast cancers. Foreign-born women were at greater risk of HR–/HER2+ tumors, although nativity was not associated with other subtypes. Similarity in the distribution and prognosis of breast cancer subtypes among California Hispanic women and previous studies in other racial/ethnic groups underscores the need to understand how sociodemographic factors, such as SES, contribute to the distinct patterns of breast cancer subtype incidence and mortality among women of all racial/ethnic backgrounds.

Acknowledgments

MPB, SA and WFA are employees of the National Cancer Institute at the National Institutes of Health and no additional funding was provided specifically for this work. The collection of cancer incidence data used in this study was supported by the California Department of Health Services as part of the statewide cancer reporting program mandated by California Health and Safety Code Section 103885; the National Cancer Institute's Surveillance, Epidemiology, and End Results Program under contract HHSN261201000140C awarded to the Cancer Prevention Institute of California, contract HHSN261201000035C awarded to the University of Southern California, and contract HHSN261201000034C awarded to the Public Health Institute; and the Centers for Disease Control and Prevention's National Program of Cancer Registries, under agreement #1U58 DP000807-01 awarded to the Public Health Institute. The ideas and opinions expressed herein are those of the authors, and endorsement by the State of California, the California Department of Health Services, the National Cancer Institute, or the Centers for Disease Control and Prevention or their contractors and subcontractors is not intended nor should be inferred.

References

1. Banegas MP, Li CI. Breast cancer characteristics and outcomes among Hispanic Black and Hispanic White women. *Breast Cancer Res Treat.* 2012; 134 (3):1297–1304.10.1007/s10549-012-2142-1 [PubMed: 22772379]
2. Ooi SL, Martinez ME, Li CI. Disparities in breast cancer characteristics and outcomes by race/ethnicity. *Breast Cancer Res Treat.* 2010.10.1007/s10549-010-1191-6
3. Parise CA, Bauer KR, Brown MM, Caggiano V. Breast cancer subtypes as defined by the estrogen receptor (ER), progesterone receptor (PR), and the human epidermal growth factor receptor 2 (HER2) among women with invasive breast cancer in California, 1999–2004. *The breast journal.* 2009; 15 (6):593–602. TBJ822 [pii]. 10.1111/j.1524-4741.2009.00822.x [PubMed: 19764994]
4. Carey LA, Perou CM, Livasy CA, Dressler LG, Cowan D, Conway K, Karaca G, Troester MA, Tse CK, Edmiston S, Deming SL, Geradts J, Cheang MC, Nielsen TO, Moorman PG, Earp HS, Millikan RC. Race, breast cancer subtypes, and survival in the Carolina Breast Cancer Study. *JAMA.* 2006; 295 (21):2492–2502. [PubMed: 16757721]
5. Dunnwald LK, Rossing MA, Li CI. Hormone receptor status, tumor characteristics, and prognosis: a prospective cohort of breast cancer patients. *Breast Cancer Res.* 2007; 9 (1):R6. bcr1639 [pii]. 10.1186/bcr1639 [PubMed: 17239243]
6. Hines LM, Risendal B, Byers T, Mengshol S, Lowery J, Singh M. Ethnic disparities in breast tumor phenotypic subtypes in Hispanic and non-Hispanic white women. *Journal of women's health* (2002). 2011; 20 (10):1543–1550.10.1089/jwh.2010.2558

7. Ortiz AP, Frias O, Perez J, Cabanillas F, Martinez L, Sanchez C, Capo-Ramos DE, Gonzalez-Keelan C, Mora E, Suarez E. Breast cancer molecular subtypes and survival in a hospital-based sample in Puerto Rico. *Cancer Med.* 2013; 2 (3):343–350.10.1002/cam4.78 [PubMed: 23930211]
8. Gomez SL, Le GM, West DW, Satariano WA, O'Connor L. Hospital policy and practice regarding the collection of data on race, ethnicity, and birthplace. *Am J Public Health.* 2003; 93 (10):1685–1688. [PubMed: 14534222]
9. North American Association of Central Cancer Registries (NAACCR) Race and Ethnicity Work Group NAACCR. Guideline for Enhancing Hispanic/Latino Identification: Revised NAACCR Hispanic/Latino Identification Algorithm [NHIA v2.2]. North American Association of Central Cancer Registries; Springfield, IL:
10. Gomez SL, Quach T, Horn-Ross PL, Pham JT, Cockburn M, Chang ET, Keegan TH, Glaser SL, Clarke CA. Hidden breast cancer disparities in Asian women: disaggregating incidence rates by ethnicity and migrant status. *Am J Public Health.* 2010; 100(Suppl 1):S125–131. *AJPH.* 2009.163931 [pii]. 10.2105/AJPH.2009.163931 [PubMed: 20147696]
11. Gomez SL, Glaser SL. Quality of cancer registry birthplace data for Hispanics living in the United States. *Cancer Causes Control.* 2005; 16 (6):713–723.10.1007/s10552-005-0694-7 [PubMed: 16049810]
12. Clarke CA, Keegan TH, Yang J, Press DJ, Kurian AW, Patel AH, Lacey JV Jr. Age-specific incidence of breast cancer subtypes: understanding the black-white crossover. *J Natl Cancer Inst.* 2012; 104 (14):1094–1101. djs264 [pii] . 10.1093/jnci/djs264 [PubMed: 22773826]
13. Bauer KR, Brown M, Cress RD, Parise CA, Caggiano V. Descriptive analysis of estrogen receptor (ER)-negative, progesterone receptor (PR)-negative, and HER2-negative invasive breast cancer, the so-called triple-negative phenotype: a population-based study from the California cancer Registry. *Cancer.* 2007; 109 (9):1721–1728. [PubMed: 17387718]
14. Bernstein L, Lacey JV Jr. Receptors, associations, and risk factor differences by breast cancer subtypes: positive or negative? *J Natl Cancer Inst.* 2011; 103 (6):451–453. djr046 [pii]. 10.1093/jnci/djr046 [PubMed: 21346225]
15. Hammond ME, Hayes DF, Dowsett M, Allred DC, Hagerty KL, Badve S, Fitzgibbons PL, Francis G, Goldstein NS, Hayes M, Hicks DG, Lester S, Love R, Mangu PB, McShane L, Miller K, Osborne CK, Paik S, Perlmutter J, Rhodes A, Sasano H, Schwartz JN, Sweep FC, Taube S, Torlakovic EE, Valenstein P, Viale G, Visscher D, Wheeler T, Williams RB, Wittliff JL, Wolff AC. American Society of Clinical Oncology/College Of American Pathologists guideline recommendations for immunohistochemical testing of estrogen and progesterone receptors in breast cancer. *J Clin Oncol.* 2010; 28 (16):2784–2795. JCO.2009.25.6529 [pii]. 10.1200/JCO.2009.25.6529 [PubMed: 20404251]
16. Wolff AC, Hammond ME, Schwartz JN, Hagerty KL, Allred DC, Cote RJ, Dowsett M, Fitzgibbons PL, Hanna WM, Langer A, McShane LM, Paik S, Pegram MD, Perez EA, Press MF, Rhodes A, Sturgeon C, Taube SE, Tubbs R, Vance GH, van de Vijver M, Wheeler TM, Hayes DF. American Society of Clinical Oncology/College of American Pathologists guideline recommendations for human epidermal growth factor receptor 2 testing in breast cancer. *J Clin Oncol.* 2007; 25 (1):118–145. [PubMed: 17159189]
17. Perou CM, Sorlie T, Eisen MB, van de Rijn M, Jeffrey SS, Rees CA, Pollack JR, Ross DT, Johnsen H, Akslén LA, Fluge O, Pergamenschikov A, Williams C, Zhu SX, Lonning PE, Borresen-Dale AL, Brown PO, Botstein D. Molecular portraits of human breast tumours. *Nature.* 2000; 406 (6797):747–752. [PubMed: 10963602]
18. Gordon NH. Association of education and income with estrogen receptor status in primary breast cancer. *Am J Epidemiol.* 1995; 142 (8):796–803. [PubMed: 7572955]
19. Andaya AA, Enewold L, Horner MJ, Jatoti I, Shriver CD, Zhu K. Socioeconomic disparities and breast cancer hormone receptor status. *Cancer Causes Control.* 2012; 23 (6):951–958.10.1007/s10552-012-9966-1 [PubMed: 22527173]
20. Gordon NH. Socioeconomic factors and breast cancer in black and white Americans. *Cancer Metastasis Rev.* 2003; 22 (1):55–65. [PubMed: 12716037]
21. Drewnowski A, Specter SE. Poverty and obesity: the role of energy density and energy costs. *Am J Clin Nutr.* 2004; 79 (1):6–16. [PubMed: 14684391]

22. Gordon-Larsen P, Nelson MC, Page P, Popkin BM. Inequality in the built environment underlies key health disparities in physical activity and obesity. *Pediatrics*. 2006; 117 (2):417–424. 117/2/417 [pii]. 10.1542/peds.2005-0058 [PubMed: 16452361]
23. Jung S, Spiegelman D, Baglietto L, Bernstein L, Boggs DA, van den Brandt PA, Buring JE, Cerhan JR, Gaudet MM, Giles GG, Goodman G, Hakansson N, Hankinson SE, Helzlsouer K, Horn-Ross PL, Inoue M, Krogh V, Lof M, McCullough ML, Miller AB, Neuhouser ML, Palmer JR, Park Y, Robien K, Rohan TE, Scarmo S, Schairer C, Schouten LJ, Shikany JM, Sieri S, Tsugane S, Visvanathan K, Weiderpass E, Willett WC, Wolk A, Zeleniuch-Jacquotte A, Zhang SM, Zhang X, Ziegler RG, Smith-Warner SA. Fruit and vegetable intake and risk of breast cancer by hormone receptor status. *J Natl Cancer Inst*. 2013; 105 (3):219–236.10.1093/jnci/djs635 [PubMed: 23349252]
24. Zhang X, Spiegelman D, Baglietto L, Bernstein L, Boggs DA, van den Brandt PA, Buring JE, Gapstur SM, Giles GG, Giovannucci E, Goodman G, Hankinson SE, Helzlsouer KJ, Horn-Ross PL, Inoue M, Jung S, Khudyakov P, Larsson SC, Lof M, McCullough ML, Miller AB, Neuhouser ML, Palmer JR, Park Y, Robien K, Rohan TE, Ross JA, Schouten LJ, Shikany JM, Tsugane S, Visvanathan K, Weiderpass E, Wolk A, Willett WC, Zhang SM, Ziegler RG, Smith-Warner SA. Carotenoid intakes and risk of breast cancer defined by estrogen receptor and progesterone receptor status: a pooled analysis of 18 prospective cohort studies. *Am J Clin Nutr*. 2012; 95 (3): 713–725.10.3945/ajcn.111.014415 [PubMed: 22277553]
25. Wu Y, Zhang D, Kang S. Physical activity and risk of breast cancer: a meta-analysis of prospective studies. *Breast Cancer Res Treat*. 2013; 137 (3):869–882.10.1007/s10549-012-2396-7 [PubMed: 23274845]
26. Vona-Davis L, Rose DP, Hazard H, Howard-McNatt M, Adkins F, Partin J, Hobbs G. Triple-negative breast cancer and obesity in a rural Appalachian population. *Cancer Epidemiol Biomarkers Prev*. 2008; 17 (12):3319–3324. 17/12/3319 [pii]. 10.1158/1055-9965.EPI-08-0544 [PubMed: 19064545]
27. Heck KE, Braveman P, Cubbin C, Chavez GF, Kiely JL. Socioeconomic status and breastfeeding initiation among California mothers. *Public Health Rep*. 2006; 121 (1):51–59. [PubMed: 16416698]
28. Martinez GM, Chandra A, Abma JC, Jones J, Mosher WD. Fertility, contraception, and fatherhood: data on men and women from cycle 6 (2002) of the 2002 National Survey of Family Growth. *Vital Health Stat*. 2006; 23 (26):1–142.
29. Li CI, Beaber EF, Tang MT, Porter PL, Daling JR, Malone KE. Reproductive factors and risk of estrogen receptor positive, triple-negative, and HER2-neu overexpressing breast cancer among women 20–44 years of age. *Breast Cancer Res Treat*. 2013; 137 (2):579–587.10.1007/s10549-012-2365-1 [PubMed: 23224237]
30. Phipps AI, Chlebowski RT, Prentice R, McTiernan A, Wactawski-Wende J, Kuller LH, Adams-Campbell LL, Lane D, Stefanick ML, Vitolins M, Kabat GC, Rohan TE, Li CI. Reproductive history and oral contraceptive use in relation to risk of triple-negative breast cancer. *J Natl Cancer Inst*. 2011; 103 (6):470–477. djr030 [pii]. 10.1093/jnci/djr030 [PubMed: 21346227]
31. Millikan RC, Newman B, Tse CK, Moorman PG, Conway K, Dressler LG, Smith LV, Labbok MH, Geradts J, Bensen JT, Jackson S, Nyante S, Livasy C, Carey L, Earp HS, Perou CM. Epidemiology of basal-like breast cancer. *Breast Cancer Res Treat*. 2008; 109 (1):123–139.10.1007/s10549-007-9632-6 [PubMed: 17578664]
32. Vona-Davis L, Rose DP. The influence of socioeconomic disparities on breast cancer tumor biology and prognosis: a review. *Journal of women’s health*. 2009; 18 (6):883–893.10.1089/jwh.2008.1127
33. Dent R, Trudeau M, Pritchard KI, Hanna WM, Kahn HK, Sawka CA, Lickley LA, Rawlinson E, Sun P, Narod SA. Triple-negative breast cancer: clinical features and patterns of recurrence. *Clin Cancer Res*. 2007; 13 (15 Pt 1):4429–4434. 13/15/4429 [pii]. 10.1158/1078-0432.CCR-06-3045 [PubMed: 17671126]
34. Onitilo AA, Engel JM, Greenlee RT, Mukesh BN. Breast cancer subtypes based on ER/PR and Her2 expression: comparison of clinicopathologic features and survival. *Clin Med Res*. 2009; 7 (1–2):4–13. 7/1-2/4 [pii]. 10.3121/cmr.2009.825 [PubMed: 19574486]

35. Ennis, SR.; Rios-Vargas, M.; Albert, NG. Census 2010 Briefs. 2011. The Hispanic Population: 2010.
36. Gomez SL, Glaser SL. Quality of birthplace information obtained from death certificates for Hispanics, Asians, and Pacific Islanders. *Ethn Dis.* 2004; 14 (2):292–295. [PubMed: 15132217]
37. Clegg LX, Reichman ME, Hankey BF, Miller BA, Lin YD, Johnson NJ, Schwartz SM, Bernstein L, Chen VW, Goodman MT, Gomez SL, Graff JJ, Lynch CF, Lin CC, Edwards BK. Quality of race, Hispanic ethnicity, and immigrant status in population-based cancer registry data: implications for health disparity studies. *Cancer Causes Control.* 2007; 18 (2):177–187.10.1007/s10552-006-0089-4 [PubMed: 17219013]
38. Gomez SL, Glaser SL. Misclassification of race/ethnicity in a population-based cancer registry (United States). *Cancer Causes Control.* 2006; 17 (6):771–781.10.1007/s10552-006-0013-y [PubMed: 16783605]
39. Ederer F, Geisser MS, Mongin SJ, Church TR, Mandel JS. Colorectal cancer deaths as determined by expert committee and from death certificate: a comparison. The Minnesota Study. *J Clin Epidemiol.* 1999; 52(5):447–452. S0895-4356(99)00016-5 [pii]. [PubMed: 10360340]
40. Percy C, Ries LG, Van Holten VD. The accuracy of liver cancer as the underlying cause of death on death certificates. *Public Health Rep.* 1990; 105 (4):361–367. [PubMed: 2116637]
41. Gilliland FD, Joste N, Stauber PM, Hunt WC, Rosenberg R, Redlich G, Key CR. Biologic characteristics of interval and screen-detected breast cancers. *J Natl Cancer Inst.* 2000; 92 (9):743–749. [PubMed: 10793111]
42. Porter PL, El-Bastawissi AY, Mandelson MT, Lin MG, Khalid N, Watney EA, Cousens L, White D, Taplin S, White E. Breast tumor characteristics as predictors of mammographic detection: comparison of interval- and screen-detected cancers. *J Natl Cancer Inst.* 1999; 91 (23):2020–2028. [PubMed: 10580027]

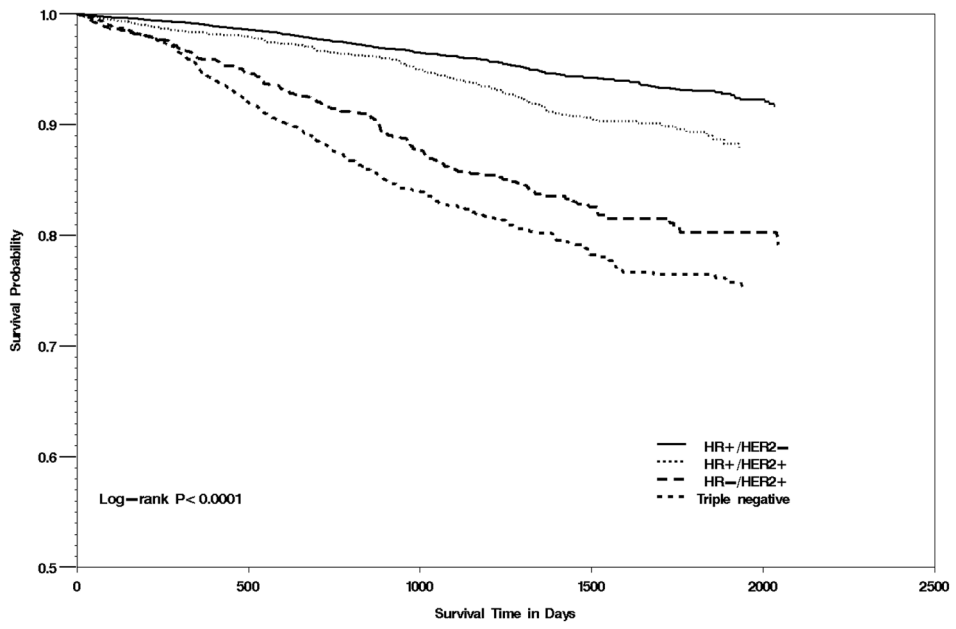


Figure 1.
Kaplan-Meier curve of Hispanic women by breast cancer subtype, California 2005–2010

Table 1

Demographic and Tumor Characteristics of the Breast Cancer Subtypes in Hispanic Women with Invasive Breast Cancer, California, 2005–2010

Characteristics	Total n=16,380	HR+/HER2- n=10,247(62.6%)	Triple negative n=2,549 (15.6%)	HR+/HER2+ n=2,265 (13.8%)	HR-/HER2+ n=1,319 (8.1%)
n (%)					
Nativity					
US-Born	7633 (46.6)	4932 (48.1)	1193 (46.8)	976 (43.1)	532 (40.3)
Foreign-Born	8747 (53.4)	5315 (51.9)	1356 (53.2)	1289 (56.9)	787 (59.7)
Socioeconomic status					
Quintile 1 (Low)	4261 (26.0)	2478 (24.2)	713 (28.0)	645 (28.5)	425 (32.2)
Quintile 2	3723 (22.7)	2302 (22.5)	608 (23.9)	511 (22.6)	302 (22.9)
Quintile 3	3027 (18.5)	1915 (18.7)	485 (19.0)	394 (17.4)	233 (17.7)
Quintile 4	2484 (15.2)	1625 (15.9)	348 (13.7)	344 (15.2)	167 (12.7)
Quintile 5 (High)	1683 (10.3)	1170 (11.4)	204 (8.0)	207 (9.1)	102 (7.7)
Unknown/missing	1433 (7.3)	757 (7.4)	191 (7.5)	164 (7.2)	90 (6.8)
Hispanic enclave					
Quintile 1 (Low)	1359 (8.3)	903 (8.8)	197 (7.7)	162 (7.2)	97 (7.4)
Quintile 2	2217 (13.5)	1472 (14.4)	333 (13.1)	253 (11.2)	159 (12.1)
Quintile 3	2810 (17.2)	1793 (17.5)	440 (17.3)	376 (16.6)	201 (15.2)
Quintile 4	3992 (24.4)	2544 (24.8)	605 (23.7)	540 (23.8)	303 (23.0)
Quintile 5 (High)	5261 (32.1)	3062 (29.9)	861 (33.8)	837 (37.0)	501 (38.0)
Unknown/missing	917 (4.5)	473 (4.6)	113 (4.4)	97 (4.3)	58 (4.4)
Age at diagnosis (years)					
<45	3633 (22.2)	1867 (18.2)	771 (30.2)	641 (28.3)	354 (26.8)
45–49	2444 (14.9)	1529 (14.9)	373 (14.6)	357 (15.8)	185 (14.0)
50–54	2348 (14.3)	1380 (13.5)	405 (15.9)	336 (14.8)	227 (17.2)
55–59	2024 (12.4)	1246 (12.2)	308 (12.1)	284 (12.5)	186 (14.1)
60–64	1720 (10.5)	1179 (11.5)	233 (9.1)	197 (8.7)	111 (8.4)
65	4211 (25.7)	3046 (29.7)	459 (18.0)	450 (19.9)	256 (19.4)
Marital status at diagnosis					
Married	9293 (56.7)	5773 (56.3)	1460 (57.3)	1299 (57.4)	761 (57.7)
Never married	2917 (17.8)	1771 (17.3)	463 (18.2)	453 (20.0)	230 (17.4)

Characteristics	Total n=16,380	HR+/HER2- n=10,247(62.6%)	Triple negative n=2,549 (15.6%)	HR+/HER2+ n=2,265 (13.8%)	HR-/HER2+ n=1,319 (8.1%)
Previously married	3598 (22.0)	2351 (22.9)	529 (20.8)	453 (20.0)	265 (20.1)
Unknown	793 (3.5)	352 (3.4)	97 (3.8)	60 (2.6)	63 (4.8)
Insurance status [†]					
Private/military	8199 (50.1)	5260 (51.3)	1272 (49.9)	1058 (46.7)	609 (46.2)
Public	6825 (41.7)	4161 (40.6)	1062 (41.7)	1020 (45.0)	582 (44.1)
Uninsured	235 (1.4)	142 (1.4)	37 (1.5)	36 (1.6)	20 (1.5)
Unknown	1489 (6.8)	684 (6.7)	178 (7.0)	151 (6.7)	108 (8.2)
Clinical Characteristics					
AJCC tumor stage					
I	6034 (36.8)	4379 (42.7)	680 (26.7)	667 (29.4)	308 (23.4)
II	6186 (37.8)	3644 (35.6)	1170 (45.9)	860 (38.0)	512 (38.8)
III	2768 (16.9)	1473 (14.4)	472 (18.5)	492 (21.7)	331 (25.1)
IV	778 (4.7)	409 (4.0)	127 (5.0)	141 (6.2)	101 (7.7)
Unknown	1137 (3.7)	342 (3.3)	100 (3.9)	105 (4.6)	67 (5.1)
Tumor grade					
Low	9053 (55.3)	7321 (71.4)	403(15.8)	1054 (46.5)	275 (20.8)
High	6659 (40.7)	2501 (24.4)	2065 (81.0)	1115 (49.2)	978 (74.1)
Unknown	1356 (4.1)	425 (4.1)	81 (3.2)	96 (4.2)	66 (5.0)
Tumor size (cm)					
0-2.00	8111 (49.5)	5793 (56.5)	910 (35.7)	947 (41.8)	461 (35.0)
2.01-5.00	6065 (37.0)	3370 (32.9)	1188 (46.6)	961 (42.4)	546 (41.4)
>5.00	1493 (9.1)	743 (7.3)	317 (12.4)	227 (10.0)	206 (15.6)
Microinvasion	132 (0.8)	44 (0.4)	32 (1.3)	29 (1.3)	27 (2.0)
Diffuse	85 (0.5)	45 (0.4)	11 (0.4)	16 (0.7)	13 (1.0)
Unknown	990 (3.0)	252 (2.5)	91 (3.6)	85 (3.8)	66 (5.0)
Lymph node involvement					
Negative	9241 (56.4)	6117 (59.7)	1423 (55.8)	1098 (48.5)	603 (45.7)
Positive	6840 (41.8)	3965 (38.7)	1083 (42.5)	1109 (49.0)	683 (51.8)
Unknown	640 (1.8)	165 (1.6)	43 (1.7)	58 (2.6)	33 (2.5)
Metastasis					
Negative	15255 (93.1)	9644 (94.1)	2368 (92.9)	2055 (90.7)	1188 (90.1)

Characteristics	Total n=16,380	HR+/HER2- n=10,247(62.6%)	Triple negative n=2,549 (15.6%)	HR+/HER2+ n=2,265 (13.8%)	HR-/HER2+ n=1,319 (8.1%)
Positive	778 (4.7)	409 (4.0)	127 (5.0)	141 (6.2)	101 (7.7)
Unknown	637 (2.1)	194 (1.9)	54 (2.1)	69 (3.0)	30 (2.3)

Notes. Column percentages based on individuals with valid, non-missing information on risk factor.

[†] Insurance status is based on payer source at diagnosis. Public insurance included Medicaid and other government-assisted programs; and private insurance included health maintenance organizations, preferred provider organizations, managed care not otherwise specified, and military care.

Table 2

Adjusted Odds Ratios of Sociodemographic and Tumor Characteristics associated with Breast Tumor Subtypes (vs. HR+/HER2-) in Hispanic Women, California, 2005–2010

Characteristics	HR+/HER2-		Triple negative		HR+/HER2+		HR-/HER2+	
	%	OR [95% CI]	%	OR [95% CI]	%	OR [95% CI]	%	OR [95% CI]
<i>Sociodemographic</i>								
Nativity								
US-Born	48.1	Ref.	46.8	Ref.	43.1	Ref.	40.3	Ref.
Foreign-Born	51.9	0.97 (0.87–1.09)	53.2	0.97 (0.87–1.09)	56.9	1.06 (0.95–1.18)	59.7	1.17 (1.02–1.35)
Socioeconomic status								
Quintile 1 (Low)	24.2	1.42 (1.13–1.79)	28.0	1.42 (1.13–1.79)	28.5	0.96 (0.77–1.20)	32.2	1.43 (1.07–1.92)
Quintile 2	22.5	1.40 (1.12–1.74)	23.9	1.40 (1.12–1.74)	22.6	0.93 (0.76–1.15)	22.9	1.21 (0.91–1.60)
Quintile 3	18.7	1.39 (1.12–1.72)	19.0	1.39 (1.12–1.72)	17.4	1.01 (0.82–1.24)	17.7	1.27 (0.96–1.68)
Quintile 4	15.9	1.32 (1.06–1.64)	13.7	1.32 (1.06–1.64)	15.2	1.15 (0.94–1.41)	12.7	1.17 (0.89–1.56)
Quintile 5 (High)	11.4	Ref. [‡]	8.0	Ref. [‡]	9.1	Ref.	7.7	Ref. [‡]
Hispanic enclave								
Quintile 1 (Low)	8.8	Ref.	7.7	Ref.	7.2	Ref. [‡]	7.4	Ref.
Quintile 2	14.4	0.98 (0.78–1.23)	13.1	0.98 (0.78–1.23)	11.2	0.89 (0.70–1.12)	12.1	1.04 (0.77–1.41)
Quintile 3	17.5	0.97 (0.77–1.21)	17.3	0.97 (0.77–1.21)	16.6	1.07 (0.86–1.34)	15.2	0.96 (0.71–1.29)
Quintile 4	24.8	0.88 (0.70–1.10)	23.7	0.88 (0.70–1.10)	23.8	1.07 (0.86–1.34)	23.0	0.91 (0.68–1.22)
Quintile 5 (High)	29.9	0.98 (0.77–1.23)	33.8	0.98 (0.77–1.23)	37.0	1.34 (1.06–1.68)	38.0	1.12 (0.83–1.52)
Age at diagnosis (years)								
<45	18.2	1.03 (0.87–1.22)	30.2	1.03 (0.87–1.22)	28.3	1.15 (0.98–1.36)	26.8	0.86 (0.70–1.06)
45–49	14.9	0.72 (0.60–0.87)	14.6	0.72 (0.60–0.87)	15.8	0.87 (0.73–1.05)	14.0	0.59 (0.47–0.75)
50–54	13.5	Ref.	15.9	Ref.	14.8	Ref.	17.2	Ref.
55–59	12.2	0.93 (0.76–1.14)	12.1	0.93 (0.76–1.14)	12.5	0.97 (0.79–1.17)	14.1	0.95 (0.75–1.21)
60–64	11.5	0.83 (0.67–1.03)	9.1	0.83 (0.67–1.03)	8.7	0.79 (0.64–0.97)	8.4	0.71 (0.54–0.93)
65	29.7	0.81 (0.67–0.97)	18.0	0.81 (0.67–0.97)	19.9	0.78 (0.65–0.94)	19.4	0.78 (0.62–0.98)
Marital status								
Married	56.3	Ref.	57.3	Ref.	57.4	Ref.	57.7	Ref.
Never married	17.3	0.91 (0.79–1.05)	18.2	0.91 (0.79–1.05)	20.0	1.02 (0.89–1.17)	17.4	0.85 (0.71–1.02)

Characteristics	HR+/HER2-		Triple negative		HR+/HER2+		HR-/HER2+	
	%	OR [95% CI]	%	OR [95% CI]	%	OR [95% CI]	%	OR [95% CI]
Previously married	22.9	1.10 (0.96-1.27)	20.8	1.10 (0.96-1.27)	20.0	1.05 (0.91-1.20)	20.1	1.02 (0.85-1.21)
Insurance status								
Private/military	51.3	Ref.	49.9	Ref.	46.7	Ref.	46.2	Ref.
Public	40.6	1.06 (0.94-1.20)	41.7	1.06 (0.94-1.20)	45.0	1.24 (1.10-1.39)	44.1	1.13 (0.97-1.31)
Uninsured	1.4	0.89 (0.57-1.39)	1.5	0.89 (0.57-1.39)	1.6	1.00 (0.66-1.52)	1.5	1.00 (0.59-1.69)
<i>Clinical</i>								
Tumor grade								
Low	71.4	Ref.	15.8	Ref.	46.5	Ref.	20.8	Ref.
High	24.4	12.26 (10.79-13.93)	81.0	12.26 (10.79-13.93)	49.2	2.46 (2.21-2.74)	74.1	8.43 (7.21-9.86)
Metastasis								
Negative	94.1	Ref.	92.9	Ref.	90.7	Ref.	90.1	Ref.
Positive	4.0	0.91 (0.70-1.20)	5.0	0.91 (0.70-1.20)	6.2	1.27 (0.99-1.64)	7.7	1.00 (0.73-1.36)
Tumor Size (cm)								
0-2.00	56.5	Ref.	35.7	Ref.	41.8	Ref.	35.0	Ref.
2.01-5.00	32.9	1.29 (1.14-1.45)	46.6	1.29 (1.14-1.45)	42.4	1.18 (1.05-1.32)	41.4	1.08 (0.92-1.26)
>5.00	7.3	1.59 (1.31-1.91)	12.4	1.59 (1.31-1.91)	10.0	1.14 (0.94-1.38)	15.6	1.64 (1.31-2.05)
Microinvasion	0.4	2.38 (1.37-4.12)	1.3	2.38 (1.37-4.12)	1.3	1.99 (1.19-3.35)	2.0	3.14 (1.81-5.46)
Diffuse	0.4	1.90 (0.92-3.90)	0.4	1.90 (0.92-3.90)	0.7	2.43 (1.30-4.55)	1.0	4.41 (2.24-8.71)
Lymph nodes involved								
Negative	59.7	Ref.	55.8	Ref.	90.7	Ref.	45.7	Ref.
Positive	38.7	0.54 (0.48-0.60)	42.5	0.54 (0.48-0.60)	6.2	0.86 (0.77-0.97)	51.8	0.82 (0.71-0.94)

Notes. Models adjusted for all variables listed in the table. Abbreviations: Ref. = Referent category; OR=odds ratio; CI=confidence interval. Bold text signifies statistically significant associations.

[†] p for trend <0.05;

[‡] p for trend <0.01.

Table 3

Breast cancer-specific mortality, by tumor subtype, in Hispanic Women in California, 2005–2010

	All subtypes		HR-/HER2-		Triple negative		HR-/HER2+		HR-/HER2+	
	Deaths (n=993)	HR (95% CI)	Deaths (n=345)	HR (95% CI)	Deaths (n=357)	HR (95% CI)	Deaths (n=133)	HR (95% CI)	Deaths (n=158)	HR (95% CI)
Nativity										
US-Born	426	Ref.	138	Ref.	153	Ref.	66	Ref.	69	Ref.
Foreign-Born	567	0.97 (0.83–1.13)	207	1.12 (0.86–1.47)	204	0.99 (0.76–1.28)	67	0.68 (0.43–1.06)	89	0.72 (0.48–1.08)
Socioeconomic status										
Quintile 1 (Low)	336	1.76 (1.25–2.49)	117	1.62 (0.91–2.88)	120	1.21 (0.69–2.13)	41	2.85 (0.90–9.00)	58	4.02 (1.35–11.99)
Quintile 2	230	1.67 (1.19–2.36)	77	1.32 (0.74–2.34)	76	1.14 (0.65–1.98)	31	2.84 (0.91–8.86)	46	4.95 (1.70–14.40)
Quintile 3	179	1.54 (1.10–2.15)	58	1.31 (0.74–2.32)	79	1.44 (0.85–2.44)	22	2.34 (0.79–6.93)	20	1.79 (0.59–5.38)
Quintile 4	127	1.38 (0.98–1.94)	43	1.04 (0.59–1.83)	40	1.02 (0.59–1.79)	23	2.46 (0.83–7.30)	21	3.01 (1.03–8.77)
Quintile 5 (High)	69	Ref. [†]	29	Ref.	23	Ref.	8	Ref.	9	Ref. [†]
Hispanic enclave										
Quintile 1 (Low)	63	Ref.	19	Ref.	25	Ref.	9	Ref.	10	Ref.
Quintile 2	117	1.05 (0.75–1.48)	37	0.79 (0.43–1.46)	47	1.25 (0.73–2.13)	15	0.68 (0.24–1.90)	18	1.65 (0.65–4.20)
Quintile 3	161	0.98 (0.71–1.36)	56	1.01 (0.57–1.80)	58	1.05 (0.62–1.80)	24	0.70 (0.27–1.78)	23	1.11 (0.44–2.83)
Quintile 4	238	0.92 (0.66–1.27)	88	1.01 (0.57–1.80)	84	0.98 (0.58–1.66)	32	0.83 (0.33–2.09)	34	0.84 (0.33–2.14)
Quintile 5 (High)	382	0.92 (0.66–1.28)	133	0.98 (0.55–1.77)	128	1.11 (0.65–1.89)	51	0.59 (0.22–1.60)	70	0.94 (0.37–2.40)
Age at diagnosis (years)										
<45	245	0.94 (0.73–1.20)	60	0.65 (0.42–1.03)	116	1.35 (0.88–2.08)	29	0.49 (0.25–0.96)	40	1.37 (0.76–2.46)
45–49	130	0.96 (0.73–1.27)	48	0.79 (0.49–1.27)	53	1.25 (0.77–2.03)	12	0.55 (0.25–1.20)	17	1.33 (0.66–2.67)
50–54	149	Ref.	51	Ref.	43	Ref.	28	Ref.	27	Ref.
55–59	105	0.94 (0.70–1.26)	40	0.98 (0.59–1.60)	36	1.16 (0.69–1.95)	9	0.33 (0.13–0.82)	20	1.02 (0.50–2.07)
60–64	81	0.90 (0.65–1.24)	28	0.72 (0.42–1.26)	30	1.45 (0.83–2.54)	13	0.71 (0.29–1.70)	10	0.90 (0.40–2.07)
65	283	1.30 (1.01–1.67)	118	1.09 (0.71–1.69)	79	1.55 (0.95–2.52)	42	1.01 (0.54–1.90)	44	1.55 (0.84–2.86)
Marital status at diagnosis										
Married	507	Ref.	155	Ref.	204	Ref.	68	Ref.	80	Ref.
Never married	192	1.06 (0.87–1.29)	72	1.40 (1.00–1.96)	64	0.94 (0.67–1.32)	24	0.89 (0.50–1.58)	32	1.16 (0.70–1.93)
Prev. married	248	1.14 (0.95–1.37)	93	1.44 (1.05–1.98)	79	0.86 (0.63–1.19)	38	1.16 (0.71–1.89)	38	1.42 (0.86–2.34)
Insurance status										

	All subtypes		HR+/HER2-		Triple negative		HR+/HER2+		HR-/HER2+	
	Deaths (n=993)	HR (95% CI)	Deaths (n=345)	HR (95% CI)	Deaths (n=357)	HR (95% CI)	Deaths (n=133)	HR (95% CI)	Deaths (n=158)	HR (95% CI)
Private	394	Ref.	139	Ref.	146	Ref.	46	Ref.	63	Ref.
Public	500	1.13 (0.96-1.34)	170	0.99 (0.74-1.33)	180	1.23 (0.92-1.64)	75	1.25 (0.77-2.01)	75	1.12 (0.73-1.70)
Uninsured	24	1.41 (0.88-2.26)	9	1.58 (0.72-3.45)	7	1.53 (0.68-3.43)	<5	3.11 (0.91-10.65)	5	0.57 (0.14-2.35)
Subtype										
HR+/HER2-	345	Ref.								
Triple Negative	357	4.05 (3.35-4.90)								
HR+/HER2+	133	1.20 (0.95-1.52)								
HR-/HER2+	158	2.26 (1.80-2.84)								

Notes. Cox models were adjusted for all variables presented in addition to year of diagnosis, tumor size (continuous), lymph node (yes/no), and first course of treatment (surgery, chemotherapy, and radiation therapy); AJCC stage levels I-IV and unknown was included as a stratifying variable. Abbreviations: Ref.=Referent category; HR=hazard ratio; CI=confidence interval. Bold text signifies statistically significant associations.

[†] Public insurance included Medicaid and other government-assisted programs; and private insurance included health maintenance organizations, preferred provider organizations, managed care not otherwise specified, and military care.

[‡] p for trend <0.05.

Table 4

Breast cancer-specific mortality by Hispanic nativity

Breast cancer subtype	U.S.-born Hispanic		Foreign-born Hispanic	
	Deaths	HR [95% CI]	Deaths	HR [95% CI]
HR+/HER2-	138	Ref.	207	Ref.
Triple negative	153	4.38 (3.23–5.95)	204	4.10 (3.20–5.26)
HR+/HER2+	66	1.57 (1.11–2.22)	67	0.93 (0.67–1.31)
HR-/HER2+	69	3.22 (2.25–4.61)	89	1.91 (1.41–2.58)

Notes. Cox models were adjusted for socioeconomic status (quintiles), Hispanic enclave (quintiles), age at diagnosis (continuous), marital status (married, never married, previously married), insurance status (private, public, uninsured, unknown), tumor size (continuous), lymph node (yes/no), tumor grade (low/high/unknown) and first course of treatment (surgery, chemotherapy, and radiation therapy); AJCC stage levels I–IV and unknown was included as a stratifying variable. Bold text signifies statistically significant associations. Abbreviations: Ref.=Referent category; HR=hazard ratio; CI=confidence interval.