

# Use of Population Genetics to Assess the Ecology, Evolution, and Population Structure of *Coccidioides*

Marcus M. Teixeira, Bridget M. Barker

During the past 20 years, a general picture of the genetic diversity and population structure of *Coccidioides*, the causal agent of coccidioidomycosis (Valley fever), has emerged. The genus consists of 2 genetically diverse species, *C. immitis* and *C. posadasii*, each of which contains 1 or more distinct populations with limited gene flow. Genotypic data indicate that *C. immitis* is divided into 2 subpopulations (central and southern California populations) and *C. posadasii* is divided into 3 subpopulations (Arizona, Mexico, and Texas/South America populations). However, admixture within and among these populations and the current paucity of environmental isolates limit our understanding of the population genetics of *Coccidioides*. We assessed population structure of *Coccidioides* in Arizona by analyzing 495 clinical and environmental isolates. Our findings confirm the population structure as previously described and indicate a finer scale population structure in Arizona. Environmental isolates appear to have higher genetic diversity than isolates from human patients.

*Coccidioides immitis* and *C. posadasii* are the only 2 species recognized within the genus *Coccidioides* (1). These fungi are endemic to arid or semi-arid regions of the Americas. Both species cause the disease coccidioidomycosis (Valley fever), which is contracted by dogs, humans, and other mammals living in or visiting *Coccidioides*-endemic areas (2,3). Infection is acquired through inhalation of air-dispersed arthroconidia (asexual single-cell fungal propagules). When a mammalian host inhales these conidia, a switch from polar to isotropic growth is initiated, resulting in the development of a specialized infectious structure called a spherule (4). Within 4 to 5 days, the mature spherules disrupt, releasing potentially hundreds of endospores, each of which are capable of developing into a new spherule (5). This cycle continues until the host's

immune system represses fungal propagation or the fungus goes quiescent (4). If infection is not controlled, it can disseminate to other organs and tissues and is capable of crossing the blood-brain barrier and causing meningitis, which is fatal if untreated (6). Approximately 40% of infections are symptomatic (4).

The geographic distribution of *C. immitis* was thought to be restricted to central and southern California (7). However, the range extends south into Baja California and east into Arizona, and recent work shows this species was also found in eastern Washington (8,9), at Dinosaur National Monument in Utah (10), and in a patient in Colombia with no travel history (11). The species *C. posadasii* is present in Arizona, with its range extending into Utah, Texas, and Mexico and dispersed populations in Central and South America (12–15). *C. immitis* and *C. posadasii* probably co-occur in nature, given that both species have been isolated from patients in San Diego and Mexico and hybrid strains have been identified (1,16). Environmental sampling and recovery of isolates would be more helpful in confirming this hypothesis than using isolates derived from patients.

One approach to assessing genetic diversity in fungal populations is to develop microsatellite markers (17,18). Microsatellites are short (1–6 bp) tandem repeats, which are found throughout eukaryotic genomes and are thought to be evolving under neutrality in fungi (19). These markers have been useful in population genetics studies that compare genotypes among closely related fungal species or populations (17,20–23). Here we focus on the genotyping of *Coccidioides* strains from various origins by combining multiple studies in a meta-analysis and by using population genetics to clarify the causative agents of coccidioidomycosis.

Because coccidioidomycosis is increasing and disease severity is highly variable, defining genotypic distribution is important for monitoring outbreaks and determining whether increased pathogenicity is an emerging trait (24). Previous analysis showed that a single clone did not cause the rise in infection rates in Arizona; rather, each isolate recovered from a patient was unique (25). Thus, the question remains: why is coccidioidomycosis on the rise? It has

Author affiliations: Translational Genomics Research Institute, Flagstaff, Arizona, USA (M.M. Teixeira, B.M. Barker); Northern Arizona University, Flagstaff (B.M. Barker); University of Arizona, Tucson, Arizona, USA (B.M. Barker)

DOI: <http://dx.doi.org/10.3201/eid2206.151565>

been hypothesized that climate change, changes in human susceptibility, changes in reporting, or a result of the interaction of these factors, overlaid with high genetic variation and the possibility that *Coccidioides* can colonize new hosts and new environments, are some of the factors responsible (3,26,27). We aimed to answer 4 main questions: 1) if the subpopulation structure previously proposed has support when a larger dataset is analyzed by using multiple methods; 2) if there is evidence for population structure within Arizona; 3) if environmental isolates from Arizona are distinct from Arizona human host isolates; and 4) if patient data confound population structure because of incorrect identification of the point source of infection.

## Methods

### Strains

In total, we compiled data from 66 soil-derived isolates retrieved by mouse passage in Tucson, Arizona (28); 141 isolates from Arizona patients with Valley fever (25); 106 *C. posadasii* and 62 *C. immitis* isolates from a broad geographic range (1); and 266 clinical *C. posadasii* isolates (human and veterinary) newly analyzed for this study (online Technical Appendix 1 Table, <http://wwwnc.cdc.gov/eid/article/22/6/15-1565-Techapp1.xlsx>). Of these 641 isolates, 22 were removed from final analysis for failure to amplify >2 of the 9 loci.

### DNA Extraction

To extract DNA, we placed ≈0.2 g of mycelia in a 2-mL screw-cap tube containing 0.5-mm-diameter sterile glass beads (BioSpec, Bartlesville, OK, USA) and 1 ml of lysis buffer (50 mmol/L Tris-HCl [pH 7.5], 100 mmol/L EDTA [pH 8.0], 100 mmol/L NaCl, 0.5% sodium dodecyl sulfate, and 100 mmol/L β-mercaptoethanol) and subjected it to mechanical disruption by vortexing on a flat 12-tube holder (MoBio, Carlsbad, CA, USA) at 3,700 rpm for 10 minutes. Samples were incubated at 65°C for 60 minutes and centrifuged at 8,000 rpm for 5 minutes. We extracted nucleic acids from the supernatant with buffered phenol:chloroform:isoamyl alcohol pH 8.0 (25:24:1) and again with chloroform:isoamyl (24:1) and precipitated from the aqueous layer with 0.6 volumes of isopropyl alcohol. We washed the pellets twice with ethanol and re-suspended them in 150 μL of double-distilled H<sub>2</sub>O. DNA concentration was determined on NanoDrop 1000 spectrophotometer (Thermo Scientific, Wilmington, DE, USA) and was diluted to 20 ng/μL.

### Multilocus Microsatellite Typing Markers and PCR

To genotype isolates, we used 9 microsatellite primers developed for phylogenetic analysis and tested for concordance in *Coccidioides* (17,18,25). All microsatellite

fragments were first denatured for 2 min at 96°C, followed by 30 amplification cycles (30 s at 94°C, 30 s at 55°C, and 1 min at 72°C) and 1 extension cycle of 5 min at 72°C with 2.5× Hotmaster mix (Eppendorf, New York, NY, USA). One primer from each set was end-labeled with a fluorescent tag (either NED dye [ABI, Shirley, NY, USA] or FAM or HEX [Eurogentec, Seraing, Belgium]). Primer concentrations were 200 nmol/L each per reaction, and 100 ng of DNA was used for each reaction.

### Fragment Analysis

We grouped microsatellite fragments from each isolate into 3 sets of 3 fragments and labeled 1 primer set in each grouping with HEX, FAM, or NED. Pooled PCR products were separated on an ABI 3730 DNA Analyzer (Applied Biosystems, Foster City, CA, USA) at the University of Arizona Genomic Analysis and Technology Core sequencing facility, using a ROX-labeled ladder (Invitrogen, Carlsbad, CA, USA) for sizing. Chromatographs were read in Genotyper (ABI, Shirley, NY, USA), and a single peak was scored (*Coccidioides* is haploid). No evidence of multiple peaks was detected. Microsatellites were amplified and analyzed at least twice to verify their size. To compare our isolates to those described in published data, we analyzed the microsatellite sizes from a subset of previously analyzed isolates on our ABI 3730 system (online Technical Appendix 1 Table, duplicates tab). Calibration was necessary to compare the published microsatellite sizes to our data (online Technical Appendix 1 Table, correction tab).

### Population Analyses

We tabulate data from the Genotyper program maintained them in a spreadsheet (online Technical Appendix 1 Table). Files were checked for duplicates and clone-correction checked using GenAlEx 6.501 (29). We found identical isolates from multiple isolations from the same patient and from isolates collected from the same soil site. Any samples that were missing ≥3 loci were eliminated from the final dataset. Locations were incorporated into a nexus file containing 619 isolates. We assigned locations based on the isolation/hospital origin as follows: Phoenix, Yuma, and Tucson (Arizona); San Diego and San Joaquin Valley (California); Texas; Mexico; and South America (Brazil, Argentina, and Venezuela).

We analyzed microsatellite matrices by using STRUCTURE 2.3.4 (Pritchard Laboratory, Stanford University, Stanford, CA, USA) to determine population structure within *Coccidioides* (30). The running length of burn-in period was 100,000 repetitions with 1,000,000 Markov chain Monte Carlo repetitions. Default settings in STRUCTURE 2.3.4 were as follows: the admixture model

was used to infer  $\alpha$  along with the previous sampling location information model (LOCPRIOR) (30). We used CLUMPP, a cluster matching and permutation program (<https://web.stanford.edu/group/rosenberglab/clumpp.html>), to define populations within the STRUCTURE algorithm.  $K$  is the number of significant populations in each main group. Allele frequencies were assumed to be correlated among populations, assuming that there are different  $F_{st}$  values for different subpopulations, the previous mean of  $F_{st}$  for populations is 0.01, and  $\lambda$  is constant at 1.0. Ten runs for each  $k$  from 1 to 10 were performed, and results were analyzed using Evanno's method implemented in StructureHARVESTER (31). We generated a consensual STRUCTURE plot from the admixture values using the Clustering Markov Packager Across  $K$  (CLUMPAK) (<http://www.clumpak.tau.ac.il>) and built final plots with STRUCTURE PLOT (32,33).

We also inferred *Coccidioides* population splits and mixtures trees using a statistical model related to common ancestors through a graph of ancestral populations via TreeMix software (Pritchard Laboratory) (34). In brief, we inferred a population tree on the basis of microsatellite data for each of the identified populations in STRUCTURE (online Technical Appendix 2 Table, <http://wwwnc.cdc.gov/eid/article/22/6/15-1565-Techapp2.xlsx>). Migration events were placed on admixed edges, which are correlated with the degree of ancestry for each population and represents unidirectional gene flow between populations. Horizontal branch lengths are proportional to the accumulated genetic drift (drift parameter) from each population that was placed in a given branch. The drift parameter measures the variance in allele frequency that changes along each population of the tree. We also analyzed the same data were by using Nei's unbiased genetic distance estimate (Table 1), to complete a principal coordinate analysis (PCoA) (Table 2) in GENALEX 6.501 (<http://www.biology-assets.anu.edu.au/GenALEX/Welcome.html>) (29). We documented allele frequencies, private alleles, and haploid diversity calculations (Table 3) for Arizona samples (online Technical Appendix 2 Table).

## Results

### Combining Data from Multiple Sources

We documented microsatellite frequencies (online Technical Appendix 3 Figure 1, <http://wwwnc.cdc.gov/eid/article/22/6/15-1565-Techapp3.pdf>; online Technical Appendix 1 Table). Three loci (GAC2, 621.1, and ACJ) had low diversity in *C. posadasii*, and these same loci were variable in *C. immitis*. Three loci showed the opposite pattern (K01, K03, and K07) and had low diversity for *C. immitis* and are variable in *C. posadasii*. Three loci (K09, GA1, and GA37) were diverse for both species. These results were similar to those of earlier reports (1). We merged datasets were merged for analysis (online Technical Appendix 1 Table) and analyzed isolates from both published datasets (online Technical Appendix 1, duplicates tab). Manual corrections of 1 or 2 bp were needed because of slight variations among machines and ladders (online Technical Appendix 1, corrections tab).

### Population Structure of *Coccidioides* Subspecies

STRUCTURE analysis based on 619 isolates revealed 3 *Coccidioides* populations for *C. immitis* ( $n = 61$ ), *C. posadasii* Mexico/Texas/South America ( $n = 63$ ), and *C. posadasii* Arizona ( $n = 495$ ) (online Technical Appendix 3 Figure 2). We detected low gene flow between the 3 major populations as observed by unique bar plots for each of these populations and observed gene flow between *C. posadasii* Mexico/Texas/South America and *C. posadasii* Arizona and between *C. immitis* and *C. posadasii* Mexico/Texas/South America (online Technical Appendix 3 Figure 2). The population tree displays the 3 main populations and population assignments for each isolate along the bar plots (online Technical Appendix 3 Figure 2). PCoA analysis using Nei's unbiased genetic distance estimates revealed 3 main groupings when considering all data (Figure 1, panel A). Principal component (PC) 1 explains 93.92% of the variation, mainly attributable to variation between the species (Eigen value 1.202). PC2 explains 3.95% of the variation, reflecting the subpopulation structure in both species

**Table 1.** Pairwise population matrix of Nei's unbiased genetic distance for principal coordinates analysis of *Coccidioides* populations, Arizona, USA\*

Population	PHOENIX	AZSOIL	TUCSON	SJV	SDMX	MEXICO	TXSA
PHOENIX	0.000						
AZSOIL	0.128	0.000					
TUCSON	0.158	0.277	0.000				
SJV	2.582	2.571	1.675	0.000			
SDMX	2.519	2.570	1.737	0.143	0.000		
MEXICO	0.354	0.324	0.477	1.480	1.546	0.000	
TXSA	0.602	0.638	0.526	1.580	1.734	0.373	0.000

\*The larger the genetic distance value, the greater the genetic difference between populations. PHOENIX represents primarily *Coccidioides posadasii* human clinical isolates from Yuma and Phoenix, Arizona. AZSOIL represents primarily environmental and veterinary clinical *C. posadasii* isolates from Arizona. TUCSON represents primarily human clinical *C. posadasii* isolates from Tucson, Arizona. SJV represents primarily *C. immitis* human clinical isolates from Bakersfield, California. SDMX represents primarily *C. immitis* human clinical isolates from San Diego, California, and Mexico. MEXICO represents primarily human clinical *C. posadasii* isolates from Mexico. TXSA represents primarily human clinical *C. posadasii* isolates from Texas, Brazil, Argentina, and Venezuela.

**Table 2.** Principal coordinates analysis results indicating percentage of variation among *Coccidioides* populations, Arizona, USA\*

Value	Axis		
	1	2	3
% Variation	93.92	3.95	1.44
Total eigenvalue	1.202	0.051	0.018
PHOENIX	0.491	-0.061	0.009
AZSOIL	0.498	-0.018	0.009
TUCSON	0.213	-0.012	-0.103
SJV	-0.552	0.089	-0.023
SDMX	-0.552	-0.098	0.022
MEXICO	0.162	0.048	0.081
TXSA	0.179	0.163	-0.001

\*PHOENIX represents primarily *Coccidioides posadasii* human clinical isolates from Yuma and Phoenix, Arizona. AZSOIL represents primarily environmental and veterinary clinical *C. posadasii* isolates from Arizona. TUCSON represents primarily human clinical *C. posadasii* isolates from Tucson, Arizona. SJV represents primarily *C. immitis* human clinical isolate from Bakersfield, California. SDMX represents primarily *C. immitis* human clinical isolates from San Diego, California, and Mexico. MEXICO represents primarily human clinical *C. posadasii* isolates from Mexico. TXSA represents primarily human clinical *C. posadasii* isolates from Texas, Brazil, Argentina, and Venezuela. Axis 1 explains 93.92% of the genetic variation among the populations, which is due mainly to separation of *C. immitis* (SJV and SDMX) from *C. posadasii*. Axis 2 suggests gene flow between SJV, MEXICO, and TXSA. Axis 3 indicates that the TUCSON population contains unique genetic signatures.

(Eigen value 0.051). PC3 explains 1.44% of variation and further separates Mexico from Arizona (Table 2).

### Population Structure within *C. immitis* Population

Results of PCoA analysis strongly indicated population structure within *C. immitis*, separating San Joaquin Valley (SJV) from San Diego and Mexico (SDMX) isolates (Figure 1, panel A). STRUCTURE analysis also indicates a strong population subdivision within *C. immitis* (Figure 1, panel B). According to the optimal number of clusters determined by using StructureHARVESTER, the SJV and SDMX isolates are clustered into 2 different populations ( $k = 2$ ) (Figure 1,

panel B; online Technical Appendix 3 Figure 3). Bar plots show that limited gene flow was observed between these subpopulations; however, the bar plots also indicated that the *C. immitis* isolates 17TX, 4SD, 8SD, 4M3, and 8M3 share alleles from both populations (online Technical Appendix 3 Figure 3). The population tree indicates that the *C. immitis* SJV population has a migration event from the *C. immitis* SDMX population (Figure 2). The isolate population distribution frequency for *C. immitis* reveals differences between SDMX and SJV populations (Figure 3).

### Population Structure within *C. posadasii* Mexico/Texas/South America Population

For *C. posadasii* Mexico/Texas/South America population, we detected 2 optimal clusters (online Technical Appendix 3 Figure 3), 1 including Texas/South America isolates and 1 constituting isolates from Mexico (Figure 1). The Mexico isolates display a high level of hybridization between 2 different populations as well as within *C. immitis* (online Technical Appendix 3 Figures 1, 3). The migration event from *C. immitis* SDMX to *C. posadasii* Mexico and the more basal *C. immitis* to *C. posadasii* Tucson migration event implicate the Sonoran desert as a convergent source of multiple *Coccidioides* genotypes and possible center of origin of the genus (Figures 2, 3).

### Population Structure within *C. posadasii* Arizona Population

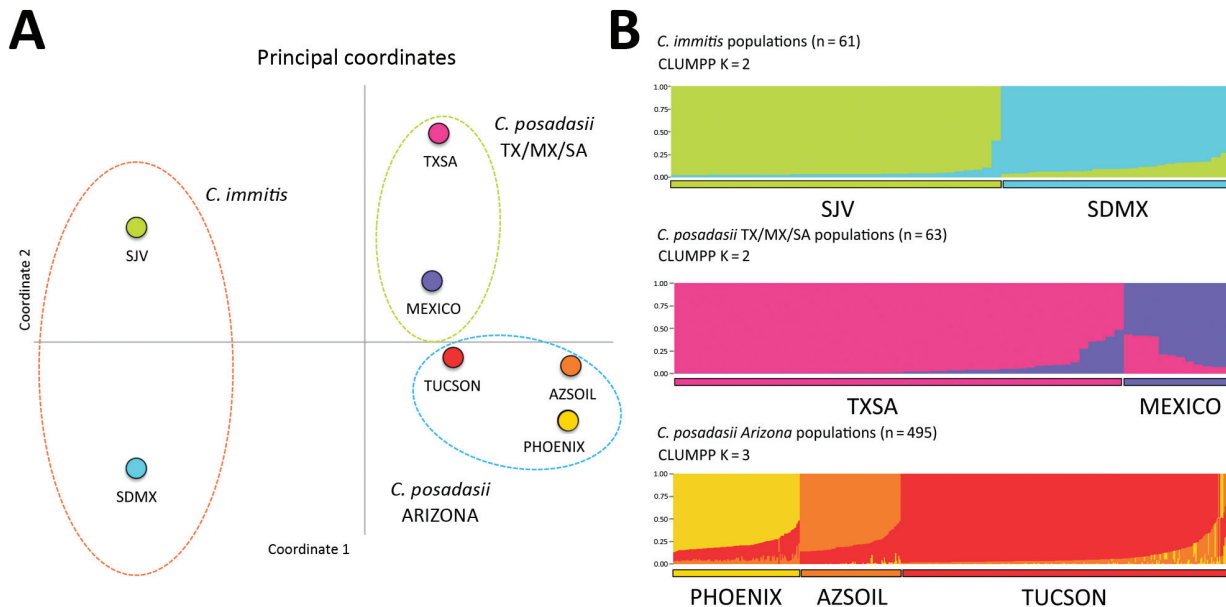
Population structure analysis of 495 separate fungal isolates suggests at least 3 different *C. posadasii* subpopulations in Arizona, in agreement with PCoA data (Figure 1). Clinical samples from Yuma and Phoenix (designated PHOENIX) and Tucson patients (designated TUCSON) fall in 2 different populations according to STRUCTURE (Figure 1,

**Table 3.** Summary of diversity indices for the *Coccidioides posadasii* population, Arizona, USA\*

Source of isolate	No.	Different alleles	Effective alleles	Shannon's informative index	Diversity	Unbiased diversity	Private alleles
Tucson clinic							
Mean	251.444	9.444	3.139	1.288	0.581	0.584	20
SE	3.158	1.676	0.533	0.220	0.085	0.085	
Yuma clinic							
Mean	9.000	3.333	2.568	0.905	0.480	0.540	0
SE	0.000	0.577	0.473	0.204	0.101	0.114	
Phoenix clinic							
Mean	128.333	6.889	2.952	1.169	0.554	0.558	5
SE	1.546	1.296	0.560	0.207	0.083	0.084	
Soil							
Mean	64.778	6.667	3.155	1.257	0.598	0.607	4
SE	1.103	1.118	0.529	0.192	0.077	0.078	
Veterinary							
Mean	13.556	4.222	2.748	1.044	0.528	0.571	0
SE	0.338	0.703	0.437	0.199	0.091	0.099	

\*Tucson clinic isolates are all human clinical isolates from Tucson, Arizona. Yuma clinic isolates (previously included in the PHOENIX population) are all human clinical isolates from Yuma, Arizona. Phoenix clinic isolates are all human clinical isolates from Maricopa County, Arizona. Soil isolates are the 66 environmental isolates from Tucson, Arizona, previously grouped in AZSOIL. Veterinary isolates are from various host animals, previously grouped in the AZSOIL population.





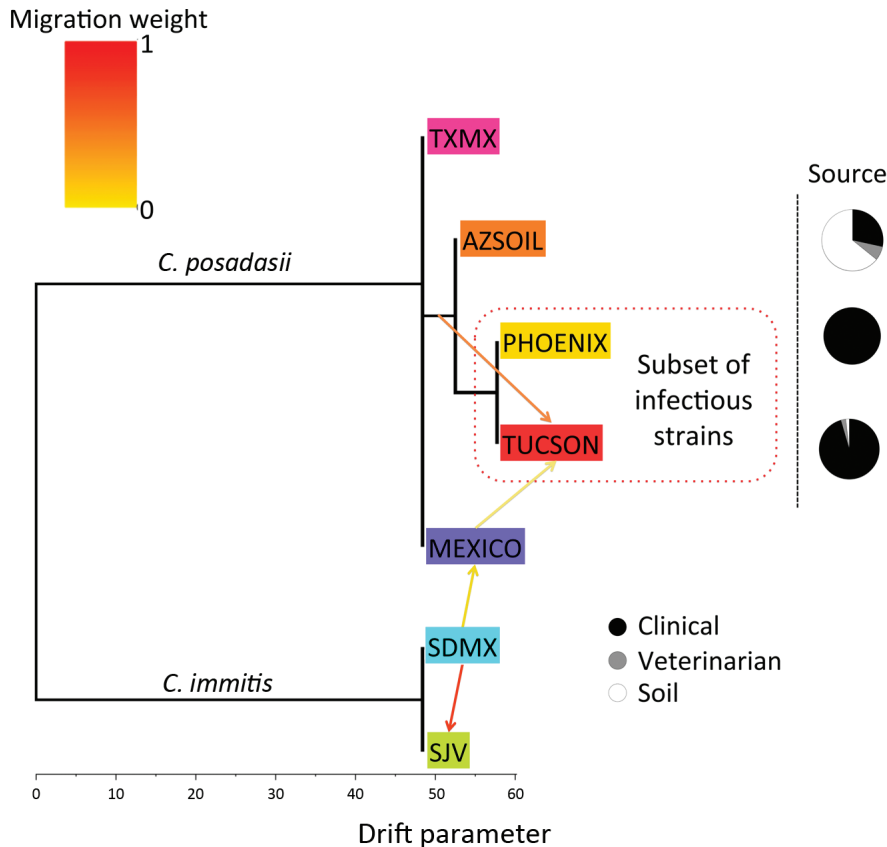
**Figure 1.** Results of principal coordinate analysis and STRUCTURE analyses of *Coccidioides* spp. populations. A) Principal coordinate analysis using Nei's unbiased genetic distance estimates supports 3 main groupings: *C. immitis*, *C. posadasii* TX/SA/MX, and *C. posadasii* Arizona (see also online Technical Appendix 3 Figure 2). The greatest separation occurs between species and is reflected in principal coordinate 1 (93.92% of variance). Color-coding for populations: lime green, San Joaquin Valley (SJV); aqua, San Diego/Mexico (SDMX); pink, Texas/South America (TXSA); purple, Mexico (MEXICO); red, Tucson (TUCSON); yellow, Phoenix/Yuma (PHOENIX); orange, soil (AZSOIL). B) STRUCTURE analysis. Microsatellite matrices were analyzed with STRUCTURE 2.3.4 to determine population structure within *Coccidioides* populations (30). The running length of burn-in period was 100,000 repetitions with 1 million Markov chain Monte Carlo repetitions. Default settings in STRUCTURE 2.3.4 were as follows: the admixture model was used to infer  $Q$  along with the previous sampling location information model (LOCPRIOR) (30). We used CLUMPP, a cluster matching and permutation program (<https://web.stanford.edu/group/rosenberglab/clumpp.html>), to define populations within the STRUCTURE algorithm. K is the number of significant populations in each main group. A consensual STRUCTURE plot was generated from the admixture values by using the Clustering Markov Package Across K (CLUMPAK) server, and final plots were built with STRUCTURE PLOT (32,33).

panel B). All environmental samples and some veterinary/clinical samples from Tucson, Phoenix, and Yuma regions constitute a third population (designated AZSOIL) apart from the TUCSON and PHOENIX populations (Figure 1; online Technical Appendix 3 Figure 3). We detected high level of admixture in the Arizona population, suggesting gene flow between 3 populations. However, the presence of private alleles for different loci within each of the 3 Arizona populations supports genetic isolation (online Technical Appendix 2 Table, AZ\_PAL tab). Structure plots of AZSOIL, PHOENIX, and TUCSON populations contain isolates with genotypes from all 3 populations (online Technical Appendix 3 Figure 3). AZSOIL and TUCSON populations arose from the same geographic origin (Figure 3). The population tree (Figure 2) supports a migration event from AZSOIL to TUCSON. The AZSOIL is placed nearer to the ancestral branch for Arizona subpopulations. In addition, a low number of clinical isolates clustered with AZSOIL, leading us to consider variable pathogenicity or host specificity (Figure 2). We propose that a mammalian host or its close microenvironment (e.g., mammal burrows) could contribute to increased fitness of a virulent

phenotype. Thus, the environmental reservoir could play a role in the emergence of pathogenic strains.

### Clinical Isolates

Data obtained from genotyping human patient isolates might lead to incorrect estimates of population structure. Two *C. immitis* were found in patients in Phoenix hospitals, and both patients had confirmed travel to California; however, we analyzed only 1 because the other did not meet our cutoff criteria (25). A Texas patient isolate was determined to be *C. immitis* (1). Patients from China, Switzerland, and Colorado (1 patient from each) and 7 California patients were infected with *C. posadasii* (1). One of the widely used laboratory *C. posadasii* strains (Silveira) was isolated from a patient with coccidioidomycosis diagnosed in California. In northern Mexico (including Baja California) and southern Mexico (Michoacán state), many strains are genotyped as *C. immitis* but have evidence of hybridization with *C. posadasii* and signatures of introgression (16). Less is known about the prevalence of introgression found in the *C. posadasii* Mexico population. For Arizona isolates newly analyzed for this study, no *C. immitis* were identified (online Technical Appendix 1 Table).



**Figure 2.** Population tree of *Coccidioides* subspecies population splits and mixtures. Maximum-likelihood population tree and presence of gene flow between diverged *Coccidioides* populations were inferred by using TreeMix software and microsatellites data (34). Direction of arrow indicates migration or gene flow based on admixture models; migration weights are shaded according their importance, supporting gene flow from a soil-derived population (AZSOIL) recovered from animal passage to a clinical-associated population (TUCSON). Color-coding for populations: lime green, San Joaquin Valley (SJV); aqua, San Diego/Mexico (SDMX); pink, Texas/South America (TXSA); purple, Mexico (MEXICO); red, Tucson (TUCSON); yellow, Phoenix/Yuma (PHOENIX); orange, soil (AZSOIL). The drift parameter, represented by horizontal scale, measures the variance in allele frequency change along each branch of the tree. The actual source of each evaluated isolate (clinical, veterinary, or soil) is represented proportionally in the pie chart.

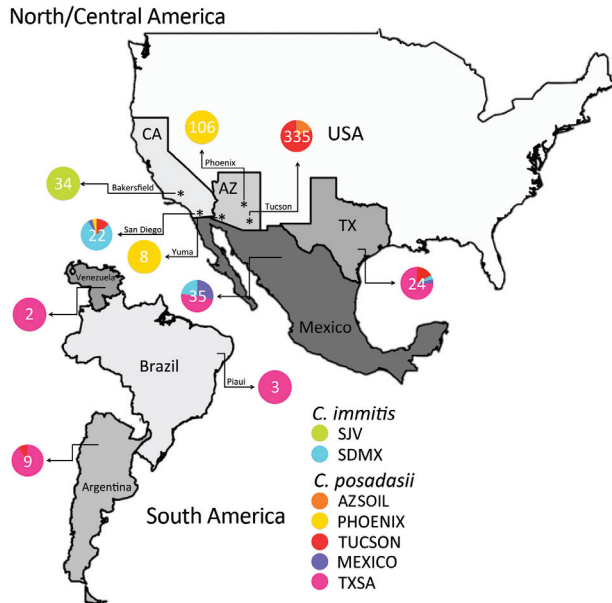
## Discussion

Multiple methods and previous reports show that there are 2 species within *Coccidioides* defined as *C. posadasii* and *C. immitis* (1,7). Within species, *C. posadasii* contains the 2 main populations of Texas/South America/Mexico and Arizona, and within *C. immitis*, 2 populations are suggested, SJV and SDMX, supported by our data and previous reports (Figure 1) (7). Gene flow between *C. immitis* populations is not abolished, as exemplified by the admixture isolates 17TX and 22SD (online Technical Appendix 3 Figure 3). STRUCTURE analysis suggests that *C. posadasii* Arizona and Texas/Mexico/South America populations are highly differentiated, with few isolates sharing genotypes among them (online Technical Appendix 3 Figure 3). Additionally, divergence between Mexico and South America/Texas is evident, such that they are evolving independently (Figure 1).

Within the Arizona population, we observed 3 clusters: PHOENIX, TUCSON, and AZSOIL (Figure 1). PHOENIX consistently groups separately from TUCSON and AZSOIL, which might reflect differences in ecology between Arizona upland (Tucson) and the Lower Colorado Valley (Phoenix and Yuma) or variation in pathogenicity among hosts. Variation in mean soil temperature, precipitation, natural hosts, and vegetation could exert differential

selection pressure on the fungus in the environment (35,36). In addition, according to the population tree, the AZSOIL subpopulation appears to be basal within Arizona. The migration event from AZSOIL to TUCSON might reflect selection of more pathogenic genotypes because only ~40% of infections are symptomatic (4), and even fewer of these would result in severe disease where the isolate would be collected from the patient (Figure 2). This leads us to propose that the AZSOIL subpopulation reflects greater diversity than the TUCSON and PHOENIX subpopulations and that this greater diversity might be driven by selection of certain pathogenic strains in humans.

Moreover, our soil sampling reflects diversity at only 7 locations in and around Tucson, and all samples were collected with a single year, whereas the patient isolates from Tucson were collected over a period of 30 years. These soil isolates were obtained using a highly sensitive murine model of coccidioidomycosis. Not all mice had evidence of illness, and infection was only realized upon necropsy. Thus, we might have selected for infectious strains, but we believe we captured diversity in pathogenesis. This assumption would suggest that we have underestimated diversity in the environment. Diversity at some soil locations was high (i.e., multiple genotypes were recovered), whereas other sites were clonal, or we only recovered a



**Figure 3.** *Coccidioides* subspecies distribution for North, Central, and South America. The frequency of assignment for each *Coccidioides* population was plotted in a pie chart for each location, and numbers of isolates from each location are displayed. For example, patients from Mexico were infected with isolates from Texas, San Diego, and Mexico populations, as determined by analysis with STRUCTURE. Because each of the patients' location is the hospital, no fine-scale population is assessed.

single colony. Thus, it was surprising to find higher unbiased genetic diversity in AZSOIL (0.607,  $\pm 0.078$  SE) than in TUCSON (0.584,  $\pm 0.085$  SE) (Table 3). Patient isolates can provide information on a coarse level, but finer-scale mapping of geographic and population boundaries will require environmental sampling and analysis of genotypes. Our data suggest that environmental isolates reflect a broad diversity of genotypes and only a subset may be capable of causing severe disease in humans. A primary concern with our analysis is the precise location of the isolate origin. Few environmental isolates of *Coccidioides* exist, and methods to obtain them for genotypic analysis are currently inadequate (9,10,28,36).

Admixtures were found in the Arizona population, and gene flow was observed between the three defined subpopulations (online Technical Appendix 3 Figure 3); however, the presence of private alleles within each of those subpopulations and high genetic distance supports genetic isolation (Tables 1–3). The same was observed for the Mexico isolates nested in the Texas/Mexico/South America population. Additionally, the presence of private alleles and high diversity within *C. immitis* suggests that our results are not affected by oversampling in the Arizona subpopulation (Table 3). Because a sexual life cycle has not been observed, questions related to frequency, timing,

and directionality of genetic exchange remain to be explored experimentally. Additional multilocus microsatellite types might be needed to support populations or could be resolved by using whole genome sequence comparison. Our data support previous work identifying the same main populations (1,7) and can be further tested with additional single nucleotide polymorphisms identified using whole genome sequence comparison.

Questions remain about the population biology of *Coccidioides*. The spatial and temporal distribution of individual genotypes, the amount of spatial overlap between the 2 species, and population boundaries within each species are still unclear (9,10,16). Overlap between species is likely, because of the identification of both *C. immitis* and *C. posadasii* recovered among patients in San Diego and northern Mexico and the observation of hybridization and introgression (1,7,16). This work shows that analyzing a large number of patient isolates and assigning regional population information reveals the potential for population structure within Arizona, at a much finer scale than previously thought (Figure 1). Thus, genetic differences and population subdivision among isolates and populations are likely greater than has been shown to date. The question of which population is basal to the *C. posadasii* lineage remains unanswered, and greater efforts to explore genotypic variation in Texas, Mexico, and Central and South America are needed.

Understanding the ecology of *Coccidioides* has been a longstanding goal (3,4). We used multiple methods to understand population genetics and determine population structure (29,30). However, environmental isolates must be more deeply explored by using direct fungal isolation (not passaging in mice) or high-coverage metagenomic sequencing, so that a specific location can be assigned to each isolate and potential for greater genetic diversity in the environment could be specifically tested. Surveying human patient isolates will continue to be valuable to track new outbreaks, such as the current coccidioidomycosis cases in Washington State (9).

Investigating the ecology and distribution of genotypes within and among populations of a pathogen is important for monitoring outbreaks, determining variance in virulence, and predicting disease progression (37). Correlating disease severity with pathogen genotype by using genome-wide association studies might assist in identifying genetic-based differences in virulence (38). Monitoring disease progression and response to antifungal therapy in animal models of coccidioidomycosis with more than a few well-characterized laboratory strains might provide information that could assist with better treatment options (39). Finally, a better understanding of ecologic and environmental factors that influence the growth and reproduction of the organism will assist in predicting and preventing exposure to the pathogen (28).

## Acknowledgments

Thanks to the Valley Fever Center for Excellence, John Galgiani, M. Lourdes Lewis, and Marc Orbach for technical support and isolates. Thanks to Matthew Fisher and Kelsea Jewell for providing raw data and DNA.

This publication is based on data reported in B.M.B.'s dissertation work. B.M.B. was supported by the Graduate Interdisciplinary Program in Genetics at the University of Arizona. Deidentified information on physician and diagnostic laboratory–reported cases was provided by the Arizona Department of Health Services. The reanalysis of data and preparation of the manuscript was supported by internal startup funding from the Translational Genomics Institute and a National Institutes of Health/National Institute of Allergy and Infectious Diseases K22 grant awarded to B.M.B.

Dr. Teixeira is a postdoctoral fellow for the Northern Arizona Center for Valley Fever Research in the Pathogen Genomics Division at the Translational Genomics Research Institute in Flagstaff, Arizona. His research interests are population genetics and genomics of human fungal pathogens, primarily fungi in the order Onygenales

Dr. Barker is director of the Northern Arizona Center for Valley Fever Research and assistant professor in the Pathogen Genomics Division at the Translational Genomics Research Institute in Flagstaff, Arizona. Her research interests are population genetics and genomics of *Coccidioides*, development of clinical assays for early detection of *Coccidioides* Valley fever, and understanding the interplay of host and pathogen factors associated with *Coccidioides* infection.

## References

- Fisher MC, Koenig GL, White TJ, Taylor JW. Molecular and phenotypic description of *Coccidioides posadasii* sp. nov., previously recognized as the non-California population of *Coccidioides immitis*. *Mycologia*. 2002;94:73–84. <http://dx.doi.org/10.2307/3761847>
- Cairns L, Blythe D, Kao A, Pappagianis D, Kaufman L, Kobayashi J, et al. Outbreak of coccidioidomycosis in Washington state residents returning from Mexico. *Clin Infect Dis*. 2000;30:61–4. <http://dx.doi.org/10.1086/313602>
- Nguyen C, Barker BM, Hoover S, Nix DE, Ampel NM, Frelinger JA, et al. Recent advances in our understanding of the environmental, epidemiological, immunological, and clinical dimensions of coccidioidomycosis. *Clin Microbiol Rev*. 2013;26:505–25. <http://dx.doi.org/10.1128/CMR.00005-13>
- Lewis ER, Bowers JR, Barker BM. Dust devil: the life and times of the fungus that causes Valley fever. *PLoS Pathog*. 2015;11:e1004762. <http://dx.doi.org/10.1371/journal.ppat.1004762>
- Huppert M, Sun SH, Harrison JL. Morphogenesis throughout saprobic and parasitic cycles of *Coccidioides immitis*. *Mycopathologia*. 1982;78:107–22. <http://dx.doi.org/10.1007/BF00442634>
- Chiller TM, Galgiani JN, Stevens DA. Coccidioidomycosis. *Infect Dis Clin North Am*. 2003;17:41–57, viii. [http://dx.doi.org/10.1016/S0891-5520\(02\)00040-5](http://dx.doi.org/10.1016/S0891-5520(02)00040-5)
- Fisher MC, Koenig GL, White TJ, San-Blas G, Negroni R, Alvarez IG, et al. Biogeographic range expansion into South America by *Coccidioides immitis* mirrors New World patterns of human migration. *Proc Natl Acad Sci U S A*. 2001;98:4558–62. <http://dx.doi.org/10.1073/pnas.071406098>
- Marsden-Haug N, Hill H, Litvintseva AP, Engelthaler DM, Driebe EM, Roe CC, et al. *Coccidioides immitis* identified in soil outside of its known range—Washington, 2013. *MMWR Morb Mortal Wkly Rep*. 2014;63:450.
- Litvintseva AP, Marsden-Haug N, Hurst S, Hill H, Gade L, Driebe EM, et al. Valley fever: finding new places for an old disease: *Coccidioides immitis* found in Washington State soil associated with recent human infection. *Clin Infect Dis*. 2015;60:e1–3. <http://dx.doi.org/10.1093/cid/ciu681>
- Johnson SM, Carlson EL, Fisher FS, Pappagianis D. Demonstration of *Coccidioides immitis* and *Coccidioides posadasii* DNA in soil samples collected from Dinosaur National Monument, Utah. *Med Mycol*. 2014;52:610–7. <http://dx.doi.org/10.1093/mmy/myu004>
- Canteros CE, Vélez H A, Toranzo AI, Suárez-Alvarez R, Tobón O Á, Jimenez A MP, et al. Molecular identification of *Coccidioides immitis* in formalin-fixed, paraffin-embedded (FFPE) tissues from a Colombian patient. *Med Mycol*. 2015;53:520–7. <http://dx.doi.org/10.1093/mmy/myv019>
- Whiston E, Taylor JW. Genomics in *Coccidioides*: insights into evolution, ecology, and pathogenesis. *Med Mycol*. 2014;52:149–55. <http://dx.doi.org/10.1093/mmy/myt001>
- Duarte-Escalante E, Zúñiga G, Frias-De-León MG, Canteros C, Castañón-Olivares LR, Reyes-Montes MR. AFLP analysis reveals high genetic diversity but low population structure in *Coccidioides posadasii* isolates from Mexico and Argentina. *BMC Infect Dis*. 2013;13:411. <http://dx.doi.org/10.1186/1471-2334-13-411>
- Brilhante RS, de Lima RA, Ribeiro JF, de Camargo ZP, Castelo-Branco DS, Grangeiro TB, et al. Genetic diversity of *Coccidioides posadasii* from Brazil. *Med Mycol*. 2013;51:432–7. <http://dx.doi.org/10.3109/13693786.2012.731711>
- Campins H. Coccidioidomycosis in South America. A review of its epidemiology and geographic distribution. *Mycopathol Mycol Appl*. 1970;41:25–34. <http://dx.doi.org/10.1007/BF02051481>
- Neafsey DE, Barker BM, Sharpton TJ, Stajich JE, Park DJ, Whiston E, et al. Population genomic sequencing of *Coccidioides* fungi reveals recent hybridization and transposon control. *Genome Res*. 2010;20:938–46. <http://dx.doi.org/10.1101/gr.103911.109>
- Fisher MC, Koenig G, White TJ, Taylor JW. A test for concordance between the multilocus genealogies of genes and microsatellites in the pathogenic fungus *Coccidioides immitis*. *Mol Biol Evol*. 2000;17:1164–74. <http://dx.doi.org/10.1093/oxfordjournals.molbev.a026399>
- Fisher MC, White TJ, Taylor JW. Primers for genotyping single nucleotide polymorphisms and microsatellites in the pathogenic fungus *Coccidioides immitis*. *Mol Ecol*. 1999;8:1082–4. <http://dx.doi.org/10.1046/j.1365-294X.1999.00655.5.x>
- Lim S, Notley-McRobb L, Lim M, Carter DA. A comparison of the nature and abundance of microsatellites in 14 fungal genomes. *Fungal Genet Biol*. 2004;41:1025–36. <http://dx.doi.org/10.1016/j.fgb.2004.08.004>
- Fisher MC, DE Hoog S, Akom NV. A highly discriminatory multilocus microsatellite typing (MLMT) system for *Penicillium marneffei*. *Mol Ecol Notes*. 2004;4:515–8. <http://dx.doi.org/10.1111/j.1471-8286.2004.00710.x>
- Fisher MC, Aanensen D, de Hoog S, Vanittanakom N. Multilocus microsatellite typing system for *Penicillium marneffei* reveals spatially structured populations. *J Clin Microbiol*. 2004;42:5065–9. <http://dx.doi.org/10.1128/JCM.42.11.5065-5069.2004>
- Taylor ML, Hernández-García L, Estrada-Bárceñas D, Salas-Lizana R, Zancopé-Oliveira RM, García de la Cruz S, et al. Genetic diversity of *Histoplasma capsulatum* isolated from infected bats randomly captured in Mexico, Brazil, and Argentina, using the polymorphism of (GA)<sub>n</sub> microsatellite and its flanking



- regions. *Fungal Biol.* 2012;116:308–17. <http://dx.doi.org/10.1016/j.funbio.2011.12.004>
23. Matute DR, Sepulveda VE, Quesada LM, Goldman GH, Taylor JW, Restrepo A, et al. Microsatellite analysis of three phylogenetic species of *Paracoccidioides brasiliensis*. *J Clin Microbiol.* 2006;44:2153–7. <http://dx.doi.org/10.1128/JCM.02540-05>
  24. Barker BM, Jewell KA, Kroken S, Orbach MJ. The population biology of coccidioides: epidemiologic implications for disease outbreaks. *Ann N Y Acad Sci.* 2007;1111:147–63. <http://dx.doi.org/10.1196/annals.1406.040>
  25. Jewell K, Cheshier R, Cage GD. Genetic diversity among clinical *Coccidioides* spp. isolates in Arizona. *Med Mycol.* 2008;46:449–55. <http://dx.doi.org/10.1080/13693780801961337>
  26. Hector RF, Rutherford GW, Tsang CA, Erhart LM, McCotter O, Anderson SM, et al. The public health impact of coccidioidomycosis in Arizona and California. *Int J Environ Res Public Health.* 2011;8:1150–73. <http://dx.doi.org/10.3390/ijerph8041150>
  27. Fisher MC, Koenig GL, White TJ, Taylor JW. Pathogenic clones versus environmentally driven population increase: analysis of an epidemic of the human fungal pathogen *Coccidioides immitis*. *J Clin Microbiol.* 2000;38:807–13.
  28. Barker BM, Tabor JA, Shubitz LF, Perrill R, Orbach MJ. Detection and phylogenetic analysis of *Coccidioides posadasii* in Arizona soil samples. *Fungal Ecol.* 2012;5:163–76. <http://dx.doi.org/10.1016/j.funeco.2011.07.010>
  29. Peakall R, Smouse PE. GenAlEx 6.5: genetic analysis in Excel. Population genetic software for teaching and research—an update. *Bioinformatics.* 2012;28:2537–9. <http://dx.doi.org/10.1093/bioinformatics/bts460>
  30. Hubisz MJ, Falush D, Stephens M, Pritchard JK. Inferring weak population structure with the assistance of sample group information. *Mol Ecol Resour.* 2009;9:1322–32. <http://dx.doi.org/10.1111/j.1755-0998.2009.02591.x>
  31. Earl D, vonHoldt B. STRUCTURE HARVESTER: a website and program for visualizing STRUCTURE output and implementing the Evanno method. *Conserv Genet Resour.* 2012;4:359–61. <http://dx.doi.org/10.1007/s12686-011-9548-7>
  32. Kopelman NM, Mayzel J, Jakobsson M, Rosenberg NA, Mayrose I. Clumpak: a program for identifying clustering modes and packaging population structure inferences across K. *Mol Ecol Resour.* 2015;15:1179–91. <http://dx.doi.org/10.1111/1755-0998.12387>
  33. Ramasamy RK, Ramasamy S, Bindroo BB, Naik VG. STRUCTURE PLOT: a program for drawing elegant STRUCTURE bar plots in user friendly interface. *Springerplus.* 2014;3:431. <http://dx.doi.org/10.1186/2193-1801-3-431>
  34. Pickrell JK, Pritchard JK. Inference of population splits and mixtures from genome-wide allele frequency data. *PLoS Genet.* 2012;8:e1002967. <http://dx.doi.org/10.1371/journal.pgen.1002967>
  35. Baptista-Rosas RC, Hinojosa A, Riquelme M. Ecological niche modeling of *Coccidioides* spp. in western North American deserts. *Ann N Y Acad Sci.* 2007;1111:35–46. <http://dx.doi.org/10.1196/annals.1406.003>
  36. Fisher FS, Bultman MW, Johnson SM, Pappagianis D, Zaborisky E. *Coccidioides* niches and habitat parameters in the southwestern United States: a matter of scale. *Ann N Y Acad Sci.* 2007;1111:47–72. <http://dx.doi.org/10.1196/annals.1406.031>
  37. Litvintseva AP, Brandt ME, Mody RK, Lockhart SR. Investigating fungal outbreaks in the 21st century. *PLoS Pathog.* 2015; 11:e1004804. <http://dx.doi.org/10.1371/journal.ppat.1004804>
  38. Muller LA, Lucas JE, Georgianna DR, McCusker JH. Genome-wide association analysis of clinical vs. nonclinical origin provides insights into *Saccharomyces cerevisiae* pathogenesis. *Mol Ecol.* 2011;20:4085–97. <http://dx.doi.org/10.1111/j.1365-294X.2011.05225.x>
  39. Thompson GR III, Stevens DA, Clemons KV, Fierer J, Johnson RH, Sykes J, et al. Call for a California coccidioidomycosis consortium to face the top ten challenges posed by a recalcitrant regional disease. *Mycopathologia.* 2015;179:1–9. <http://dx.doi.org/10.1007/s11046-014-9816-7>

Address for correspondence: Bridget M. Barker, Northern Arizona Center for Valley Fever Research, Translational Genomics Research Institute, North Pathogen Genomics Division, 3051 W Shamrell Blvd, Ste 106, Flagstaff, AZ 86005, USA; email: [bbarker@tgen.org](mailto:bbarker@tgen.org)

## EID SPOTLIGHT TOPIC



Rabies is a deadly virus that can kill anyone who gets it. Every year, an estimated 40,000 people in the U.S. receive a series of shots due to potential exposure to rabies. Each year around the world, rabies results in more than 59,000 deaths – approximately one death every 9 minutes.

<http://go.usa.gov/cuCCP>