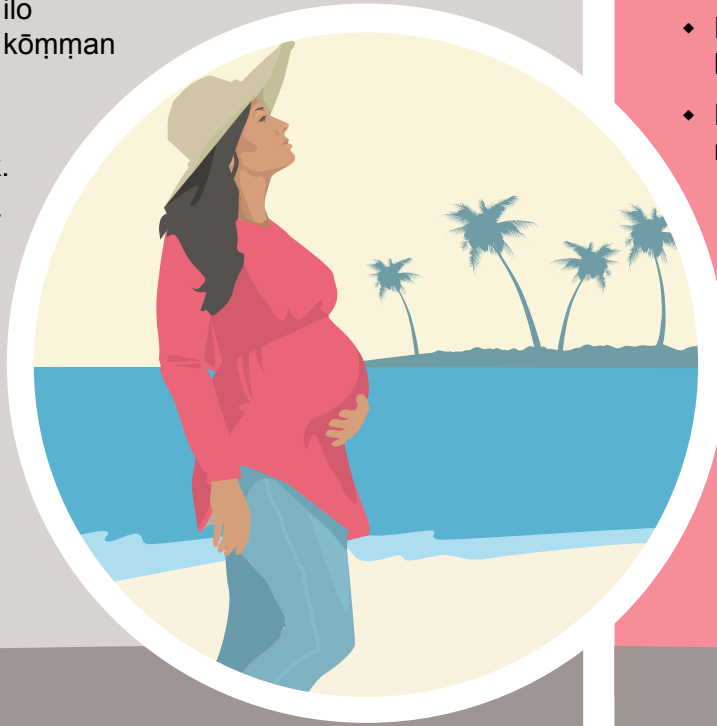


# Bōrōro im jokwe ilo jikin eo ewor Zika ie?



## Ta eo jejeļā kake Zika

- ♦ Zika emaroñ leļok jān jinen eo ebōrōro ñan eo nejin ejjañin ļotak.
- ♦ Jorrāān ko waļok jen Zika ilo iien eo kōj bōrōro emaroñ kōmñman jorrāān ilo iien koļotak.
- ♦ Nañinmej kwomaroñ ajeeded ilo an ñam kij eok.
  - » Ñam kein ekkā wot air ikij ilo raan. Emaroñ in bar kij eok ilo boñ.
- ♦ Ejjelok wā ak uno ñan nañinmej in Zika.
- ♦ Zika jān leo ñan lio ilo iien babu ippān doon.



## Ta eo jejjab jeļā kōn Zika

- ♦ Ewi joñan aņ maroñ in bōk Zika.
- ♦ Ewi joñan an naaj Zika kōkkure bōrōro eo aņ.
- ♦ Ewi joñan an Zika maroñ kōkkure ninnin eo nejuņ.

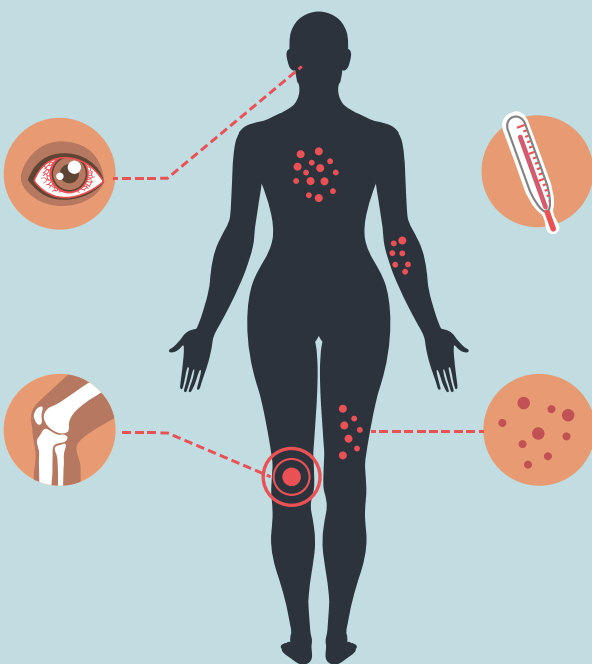
## Kakōlkōl ko an Zika

Armej ro eor Zika ippāer emaroñ in jab jeļā ke eor kij in ippān. Zika ejab lukkuun lab an iwōj jorrāān ko im ej waļok ālikin 2 ļok ñan 7 raan ko.

Errein kakōlkōl ko an Zika:

- ♦ Piba
- ♦ Kakilkil
- ♦ Metak mokoļ
- ♦ Buroro mej

Eļañe enaaj waļok kakōlkōl kein, etal ñan health center eo ak aujpitō! ilo iien eo eņōkaj tata.



# CDC ej kōmman kakkōl kein ñan ro im rej bōro

## Bōro ke?

Kōrā ro rōbōro im lõmaro ro mōttaer rej aikuj lukkuun loori buñtōn kein ñan bōbrae er jān ñam.

Zika emaroñ ilok ñan bar juon ilo iien babu ippān doon, eļañe leo eor kij in Zika ippān. Ñan kōjbarok eok make, emman eļañe kwojab babu ippān doon, ak mōkaj im kōjberbal condom ko ilo iien eo kwōj bōro.

Eļañe enaaj waļok kakōlkōl kein an Zika, ilok ñan health center eo ak aujpitōl ilo iien eo emōkaj tata ñan jeek.



## Men ko rōnāj kōjbarok eok: Kōjbarok bwe ñam en jab kij eok

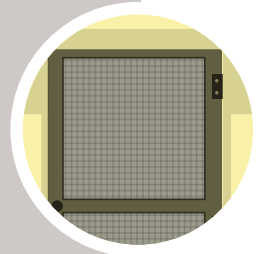
### Nuknuk ko

- ♦ Kōñak aitok pā ko, aitok ne, im juuj.
- ♦ Būttūki nuknuk ko am kōn permethrin.
  - » Enaaj kōmman bwe ñam ko ren jab kij eok.
  - » Nuknuk ko kwōj būttūki kōn enaaj kōjbarok eok iumwin 6 wiik ak 6 kōttan air kwaji nuknuk ko.
- ♦ Jab kōjberbal permethrin ko ñan kilim. Būttūki wot nuknuk ko am.



### Ñan kōjbarok ilo imoko

- ♦ Pād ilo air-condition ko ak kōjberbal winto ak kōjām ko eor ook ñan an ñam ko pād nabōj.
- ♦ Kiki ilo air-condition ak mweo eor ook ie. Eļañe ejjelok ook kwōn kiki lo teiñam ko.



### Kein būttūk ko ñan ñam ak lojen ko

- ♦ Būttūk in kañamñam ak lojen ko āinwōt DEET eļap an emman ñan ri-bōro im ñan ro rej kaainniñniñ.
- ♦ Loori kōmmeleje ko ilo bato eo.
- ♦ Ñan an emman jermal, kwomaroñ in bar kōjerbale ālikin jet awa. Riiti ellaajrak eo ilo bato eo bwe kwon jeļā ewi to in an naaj pād kab ewi ikkutkut in am kōjberbal e.
- ♦ Jab būttūki ak likūt lojen ilo kilim iumwin nuknuk ko.

