

Morbidity and Mortality

Weekly Report

U. S. DEPARTMENT OF HEALTH, EDUCATION, AND WELFARE
PUBLIC HEALTH SERVICE

Prepared by the COMMUNICABLE DISEASE CENTER MEIrose 4-5131

For release January 4, 1963

ATLANTA 22, GEORGIA

Vol. 11, No. 52

PROVISIONAL INFORMATION ON SELECTED NOTIFIABLE DISEASES IN THE UNITED STATES AND ON DEATHS IN SELECTED CITIES FOR WEEK ENDED DECEMBER 29, 1962

POLIOMYELITIS - The 707 cases of paralytic poliomyelitis reported for the 52 weeks of 1962 represent 177 fewer cases than were reported by weekly telegram during 1961. The 886 total cases of poliomyelitis represent a 35% drop from the record low in 1961 of 1,364 total cases.

Poliomyelitis (Cumulated Weekly) Through 52nd Week for Past Five Years

	1962	1961	1960	1959	1958
Paralytic	707	884	2292	5715	3150
Total	886	1364	3301	8573	6092

Texas alone accounted for 28% of the total cases. Limited outbreaks in 1962 were recognized in Alabama, Arkansas, California, Kentucky, Oklahoma, Pennsylvania, Texas, Virginia, and West Virginia. As has been true since 1955, the cases of poliomyelitis have occurred primarily in unimmunized, pre-school age children.

During 1962, Type III oral vaccine was licensed, and all three types of oral vaccine were widely used. It is estimated that during 1962 over 35,000,000 persons received Type I oral vaccine, approximately 19,000,000 Type II oral vaccine, and 15,000,000 Type III oral vaccine. The vaccine was used largely in community programs and was not uniformly distributed throughout the United States.

Table 1. CASES OF SPECIFIED NOTIFIABLE DISEASES: UNITED STATES
(Cumulative totals include revised and delayed reports through previous week)

Disease	52nd Week			Cumulative		
	Ended	Ended	Median 1957 - 1961	First 52 weeks		Median 1957 - 1961
	December 29, 1962	December 30, 1961		1962	1961	
Aseptic meningitis.....	18	27	---	2,535	3,140	---
Brucellosis.....	8	15	7	397	581	729
Diphtheria.....	10	25	25	458	594	907
Encephalitis, infectious.....	18	19	19	1,784	1,649	1,809
Hepatitis, infectious and serum...	726	1,364	441	53,218	72,790	23,016
Measles.....	4,388	4,278	4,272	476,616	421,847	429,840
Meningococcal infections.....	37	69	46	2,122	2,188	2,268
Poliomyelitis, total.....	8	30	54	886	1,364	5,946
Paralytic.....	7	15	29	707	884	2,162
Nonparalytic.....	1	11	6	125	324	2,825
Unspecified.....	-	4	19	54	156	959
Streptococcal sore throat and Scarlet fever.....	5,473	6,094	---	312,426	317,079	---
Tetanus.....	1	---	---	285	---	---
Tularemia.....	5	---	---	304	---	---
Typhoid fever.....	10	23	13	622	828	851
Typhus fever, tick-borne, (Rocky Mountain spotted).....	-	---	---	214	---	---
Rabies in Animals.....	44	79	71	3,548	3,411	3,919

Table 2. NOTIFIABLE DISEASES OF LOW FREQUENCY

	Cum.		Cum.
Anthrax:	6	Psittacosis:	111. - 1
Botulism:	9	Rabies in Man:	2
Malaria: N.Y. - 1	112	Smallpox:	-
Plague:	-	Typhus, murine:	31

INFLUENZA – No confirmed outbreaks of influenza have yet been observed during the 1962-1963 influenza season. The last confirmed outbreak of influenza in the U. S. was an Asian influenza outbreak involving 86 cases at a Minnesota hospital in May.

HEPATITIS – A preliminary total of 53,218 cases of hepatitis was reported for the year 1962. While this was a drop from the 72,651 cases during the record year of 1961, 1962 still represents the second highest hepatitis year since hepatitis was first nationally reported in 1952.

ENCEPHALITIS – There were 1,784 cases of encephalitis reported during 1962. During the last 10 years, the number of cases reported yearly has ranged from 1,912 to 2,624.

The one large epidemic of arthropod-borne encephalitis in 1962 occurred in the Tampa Bay area in Florida. Between July 1 and October 22, 455 human illnesses were reported as possible encephalitis. Highest attack rates for the disease, confirmed as St. Louis Encephalitis, occurred among persons 50 years of age and over. Reports of the outbreak have appeared in previous issues of MMWR (Vol. 11, Nos. 34-37 and 42).

DIPHTHERIA – The number of cases of diphtheria dropped to its lowest recorded level with 458 cases reported during 1962. The previous low was recorded in 1961 with 617 cases. As in previous years, cases occurred primarily in the South and among unimmunized school children. Small outbreaks occurred in the fall of 1962 in Sioux City, Iowa, Huntsville, Alabama, and New York City.

EPIDEMIOLOGICAL REPORTS

Staphylococcal Food Poisoning – Florida

On November 21, 1962, an explosive outbreak of food poisoning occurred at four adjacent schools in a Florida city. Before the investigation was concluded, 898 cases of illness with varying degrees of abdominal cramps, diarrhea, dizziness, nausea, and vomiting were noted. The total enrollment of the four schools involved was 2500, giving an attack rate of 35.9%. The first case occurred about one hour after food ingestion, while the median onset of illness was five hours after ingestion in 28 cases chosen for study. One child was hospitalized but was discharged in three hours.

The investigation revealed that the food for the four schools involved was prepared in the kitchen in one school and then distributed to the three adjoining schools for serving. The attack rates were comparable in all the schools, suggesting contamination in the central kitchen. The central kitchen employed 18 persons. These were all

examined and the chief cook was found to have a chronic appearing paronychia of one finger. This was cultured and the laboratory reported growth of coagulase-positive staphylococci.

The meal had consisted of baked turkey, dressing, string beans, cherry sauce, cake with candied fruit and raisins, mashed potatoes, and giblet gravy. The turkeys had been prepared in stages and, during their preparation, were left at room temperature for varying lengths of time. A few of the turkeys were heated before serving, but most of them were served cold with piping hot gravy poured over the turkey. The chief cook made the giblet gravy and helped in the preparation of the turkey. Samples of the giblet gravy, potatoes, and dressing were not available for laboratory study, while the remaining food showed no positive findings. A review of the food ingested by those ill revealed that all had eaten the turkey over which the gravy had been poured.

It would appear likely that the outbreak was caused by staphylococcal enterotoxin contamination of the turkeys and/or giblet gravy by a cook with a staphylococcal paronychia.

(Abstracted from Communicable Disease Notes, Bureau of Preventable Diseases, Florida State Board of Health.)

Typhus Fever – New York State

A 56-year-old man, who had immigrated from Hungary many years ago, had onset of an illness on March 2, 1962, characterized by headache, sore eyes and fever, followed by a generalized spotty rash. He was a small dealer in local and imported hides and skins, and was reported to have scratched his hand on the claw of a local raccoon pelt in the middle of February. He was admitted to a hospital on March 15, thirteen days after the onset of illness. By March 23, following streptomycin and chloramphenicol therapy, the patient was afebrile and no longer had a rash.

Laboratory tests for leptospirosis and tularemia were negative; however, the Proteus OX19 tests were positive. Agglutination of Proteus OX19 was 1:1200 on March 23, and 1:160 on May 7. Clinically, epidemiologically and by laboratory tests there was no evidence to suggest Rocky Mountain Spotted Fever. Complement fixation tests for typhus, performed at the State Laboratory, showed a rise in titer from 64 to 799 between March 15 and March 20, and a fall to 287 on June 19. An effort to differentiate between Brill's Disease and murine typhus by means of a toxin neutralization test was unsuccessful because of high titers against both toxins.

(Reported by Dr. Robert M. Albrecht, Director, Office of Epidemiology, and the Division of Laboratories and Research, State of New York Department of Health.)

Response to Oral Sabin Program - Columbus, Ohio, Health Department

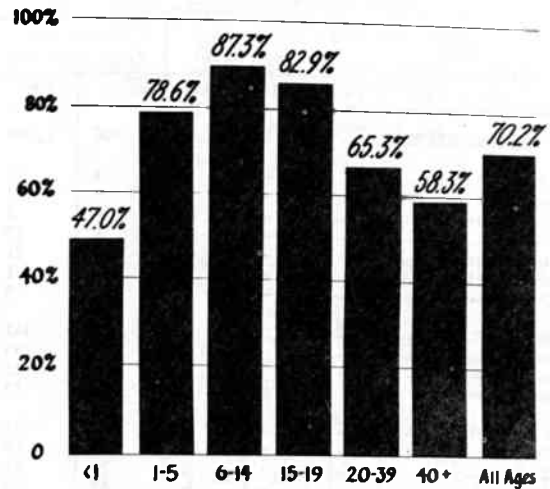
The Columbus, Ohio, Health Department carried out an oral Sabin program for Type I polio vaccine on September 30, 1962. At that time, approximately 536,000 doses were administered. The recipients of the vaccine were residents primarily of Columbus and Franklin Counties, since the surrounding counties carried out similar type programs at the same time.

Following the administration of the vaccine, an attempt was made to determine which groups had been reached in the immunization program. Sample surveys were conducted of responses to the program in the various census tracts throughout Columbus and Franklin Counties. The best responses were in school-age groups, although a fair proportion of those in the 1-5 year age group did get immunized as well. The accompanying graph shows the responses of the populations in Columbus and Franklin County for the various age groups.

The census tract data revealed that the poorest responses to the immunization campaign came from the

(Continued on page 416)

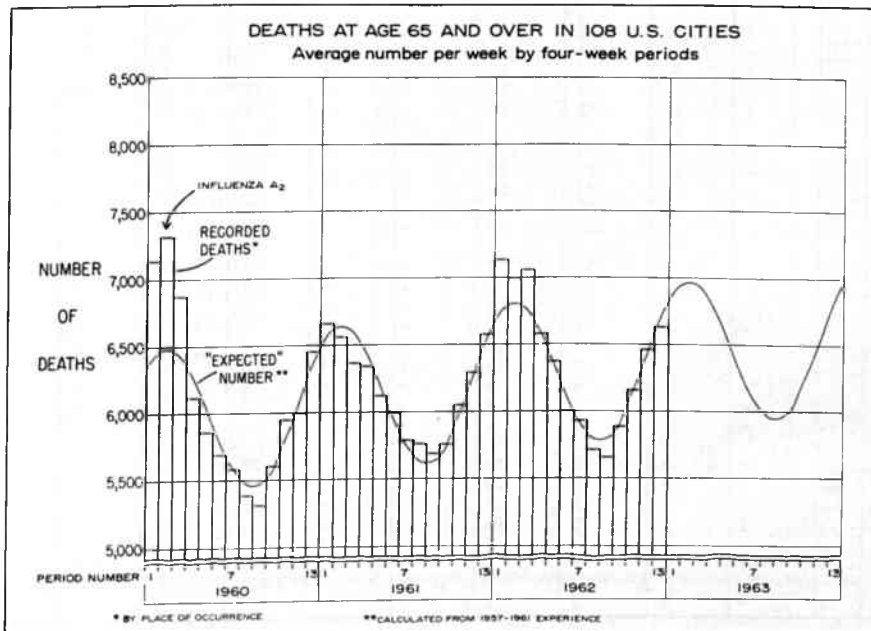
PARTICIPATION IN ORAL POLIO IMMUNIZATION PROGRAM IN COLUMBUS AND FRANKLIN COUNTY POPULATION BY AGE GROUP



SUMMARY OF DEATHS AMONG PERSONS 65 YEARS AND OVER IN 108 U. S. CITIES

The weekly average number of deaths among persons 65 years and over in 108 cities for the four-week period ending December 29 was 6,626 as compared with an expected 6,710 weekly average.

	WEEK ENDING				4 Week Total	Weekly Average
	12/8	12/15	12/22	12/29		
Observed	6,570	6,405	7,067	6,462	26,504	6,626
Expected	6,617	6,682	6,743	6,797	26,839	6,710
Excess	-47	-277	324	-335	-335	-84



(See table, page 415)

Morbidity and Mortality Weekly Report

Table 3. CASES OF SPECIFIED NOTIFIABLE DISEASES: UNITED STATES
FOR WEEKS ENDED
DECEMBER 30, 1961 AND DECEMBER 29, 1962

Area	Poliomyelitis, Total Cases				Poliomyelitis, Paralytic				Poliomyelitis, Nonparalytic		Aseptic Meningitis	
	52nd week		Cumulative First 52 weeks		52nd week		Cumulative First 52 weeks		52nd week		52nd week	
	1962	1961	1962	1961	1962	1961	1962	1961	1962	1961	1962	1961
UNITED STATES.....	8	30	886	1,364	7	15	707	884	1	11	18	27
NEW ENGLAND.....	-	-	9	50	-	-	8	33	-	-	-	-
Maine.....	-	-	-	7	-	-	-	7	-	-	-	-
New Hampshire.....	-	-	-	3	-	-	-	1	-	-	-	-
Vermont.....	-	-	1	13	-	-	-	11	-	-	-	-
Massachusetts.....	-	-	7	21	-	-	7	10	-	-	-	-
Rhode Island.....	-	-	-	1	-	-	-	1	-	-	-	-
Connecticut.....	-	-	1	5	-	-	1	3	-	-	-	-
MIDDLE ATLANTIC.....	2	3	88	347	2	1	67	227	-	-	-	1
New York.....	-	3	58	259	-	1	40	164	-	-	-	1
New Jersey.....	-	-	9	35	-	-	9	28	-	-	-	-
Pennsylvania.....	2	-	21	53	2	-	18	35	-	-	-	-
EAST NORTH CENTRAL.....	-	1	140	181	-	-	105	111	-	-	2	2
Ohio.....	-	-	20	48	-	-	18	22	-	-	-	-
Indiana.....	-	1	24	21	-	-	18	11	-	-	-	-
Illinois.....	-	-	63	37	-	-	45	19	-	-	1	1
Michigan.....	-	-	21	41	-	-	17	32	-	-	1	1
Wisconsin.....	-	-	12	34	-	-	7	27	-	-	-	-
WEST NORTH CENTRAL.....	-	3	41	83	-	1	30	37	-	2	1	2
Minnesota.....	-	2	7	8	-	-	7	6	-	2	1	2
Iowa.....	-	-	7	21	-	-	3	10	-	-	-	-
Missouri.....	-	1	12	28	-	1	7	10	-	-	-	-
North Dakota.....	-	-	5	5	-	-	3	1	-	-	-	-
South Dakota.....	-	-	2	4	-	-	2	2	-	-	-	-
Nebraska.....	-	-	8	8	-	-	8	4	-	-	-	-
Kansas.....	-	-	-	9	-	-	-	4	-	-	-	-
SOUTH ATLANTIC.....	2	4	78	228	1	3	69	169	1	1	1	9
Delaware.....	-	-	-	2	-	-	-	1	-	-	1	-
Maryland.....	-	1	2	45	-	1	1	34	-	-	-	7
District of Columbia..	-	-	2	3	-	-	1	3	-	-	-	-
Virginia.....	-	-	9	14	-	-	9	14	-	-	-	-
West Virginia.....	-	2	18	35	-	2	18	25	-	-	-	-
North Carolina.....	-	-	13	21	-	-	11	11	-	-	-	-
South Carolina.....	-	-	6	35	-	-	6	27	-	-	-	-
Georgia.....	2	-	19	30	1	-	15	23	1	-	-	-
Florida.....	-	1	9	43	-	-	8	31	-	1	-	2
EAST SOUTH CENTRAL.....	1	1	82	95	1	1	69	55	-	-	2	4
Kentucky.....	-	-	30	27	-	-	24	5	-	-	-	1
Tennessee.....	-	-	12	26	-	-	6	10	-	-	-	1
Alabama.....	1	1	23	12	1	1	23	12	-	-	2	1
Mississippi.....	-	-	17	30	-	-	16	28	-	-	-	1
WEST SOUTH CENTRAL.....	1	6	334	162	1	5	257	93	-	1	3	2
Arkansas.....	-	-	23	23	-	-	20	12	-	-	-	1
Louisiana.....	1	1	33	56	1	1	30	45	-	-	-	-
Oklahoma.....	-	-	32	4	-	-	23	-	-	-	-	-
Texas.....	-	5	246	79	-	4	184	36	-	1	3	1
MOUNTAIN.....	-	8	19	62	-	1	15	33	-	6	-	1
Montana.....	-	-	4	4	-	-	3	2	-	-	-	1
Idaho.....	-	-	2	15	-	-	1	6	-	-	-	-
Wyoming.....	-	-	2	1	-	-	1	-	-	-	-	-
Colorado.....	-	-	4	11	-	-	3	11	-	-	-	-
New Mexico.....	-	7	2	13	-	1	2	3	-	5	-	-
Arizona.....	-	-	4	9	-	-	4	7	-	-	-	-
Utah.....	-	-	1	8	-	-	1	4	-	-	-	-
Nevada.....	-	1	-	1	-	-	-	-	-	1	-	-
PACIFIC.....	2	4	95	156	2	3	87	126	-	1	9	6
Washington.....	-	-	5	32	-	-	5	30	-	-	1	-
Oregon.....	-	-	7	17	-	-	5	8	-	-	-	-
California.....	2	3	83	101	2	2	77	82	-	1	8	6
Alaska.....	-	-	-	-	-	-	-	-	-	-	-	-
Hawaii.....	---	1	-	6	---	1	-	6	---	-	---	-
Puerto Rico.....	-	-	13	7	-	-	13	7	-	-	-	-

Morbidity and Mortality Weekly Report

413

Table 3. CASES OF SPECIFIED NOTIFIABLE DISEASES: UNITED STATES
FOR WEEKS ENDED
DECEMBER 30, 1961 AND DECEMBER 29, 1962 - (Continued)

Area	Brucellosis		Diphtheria		Encephalitis, Infectious		Hepatitis, Infectious and Serum				Measles	
	52nd week	Cumulative 52 weeks	52nd week	Cumulative 52 weeks	52nd week		52nd week				52nd week	
							Under 20 yr.	20 & over	Total	Total		
	1962	1962	1962	1962	1962	1961	1962	1962	1962	1961	1962	1961
UNITED STATES.....	8	397	10	458	18	19	399	280	726	1,364	4,388	4,278
NEW ENGLAND.....	-	4	-	4	2	3	53	40	99	58	282	744
Maine.....	-	-	-	-	-	-	28	12	40	12	12	236
New Hampshire.....	-	-	-	-	-	-	3	6	9	3	25	15
Vermont.....	-	1	-	-	-	-	6	-	7	1	15	2
Massachusetts.....	-	1	-	2	-	-	11	19	31	35	164	353
Rhode Island.....	-	-	-	1	2	2	-	-	-	4	2	47
Connecticut.....	-	2	-	1	-	1	5	3	12	3	64	91
MIDDLE ATLANTIC.....	-	9	-	22	8	3	75	70	145	172	374	768
New York.....	-	4	-	18	6	2	40	40	80	90	162	423
New Jersey.....	-	1	-	2	-	-	11	12	23	14	54	246
Pennsylvania.....	-	4	-	2	2	1	24	18	42	68	158	99
EAST NORTH CENTRAL.....	1	82	1	14	2	2	84	54	146	296	1,954	796
Ohio.....	-	1	-	-	-	-	22	11	34	85	224	61
Indiana.....	-	7	-	5	-	-	9	7	17	33	55	26
Illinois.....	1	57	1	4	1	1	31	17	52	53	139	474
Michigan.....	-	6	-	4	1	1	20	18	38	117	497	133
Wisconsin.....	-	11	-	1	-	-	2	1	5	8	1,039	102
WEST NORTH CENTRAL.....	6	164	2	101	1	1	24	9	38	155	298	107
Minnesota.....	-	14	-	30	-	-	2	3	6	60	20	11
Iowa.....	2	87	-	15	1	-	5	2	7	38	226	47
Missouri.....	-	4	-	5	-	-	11	2	13	23	14	2
North Dakota.....	-	2	1	9	-	-	-	-	-	22	33	46
South Dakota.....	-	15	1	22	-	-	5	-	5	-	-	1
Nebraska.....	1	16	-	18	-	-	-	-	4	2	5	-
Kansas.....	3	26	-	2	-	1	1	2	3	10	NN	NN
SOUTH ATLANTIC.....	-	27	4	135	1	2	30	20	54	161	533	307
Delaware.....	-	-	-	1	-	-	-	1	1	-	6	-
Maryland.....	-	1	-	-	-	-	3	2	5	68	14	33
District of Columbia..	-	-	-	2	-	-	2	2	4	5	2	29
Virginia.....	-	13	4	18	-	1	3	4	7	32	161	158
West Virginia.....	-	-	-	2	-	1	9	1	13	22	304	72
North Carolina.....	-	2	-	12	-	-	8	3	11	24	16	1
South Carolina.....	-	-	-	10	-	-	1	2	4	1	-	3
Georgia.....	-	3	-	46	-	-	-	-	-	4	-	-
Florida.....	-	8	-	44	1	-	4	5	9	5	30	11
EAST SOUTH CENTRAL.....	1	20	1	35	-	-	40	21	61	244	56	516
Kentucky.....	-	1	-	-	-	-	20	7	27	153	28	173
Tennessee.....	1	10	-	7	-	-	15	3	18	58	23	308
Alabama.....	-	7	1	20	-	-	1	4	5	26	4	15
Mississippi.....	-	2	-	8	-	-	4	7	11	7	1	20
WEST SOUTH CENTRAL.....	-	39	2	124	-	4	23	9	32	71	101	440
Arkansas.....	-	11	-	20	-	-	-	-	-	10	1	31
Louisiana.....	-	9	1	12	-	-	6	2	8	18	1	8
Oklahoma.....	-	8	-	8	-	-	-	-	-	1	2	4
Texas.....	-	11	1	84	-	4	17	7	24	42	97	397
MOUNTAIN.....	-	16	-	12	-	-	22	7	46	69	434	197
Montana.....	-	1	-	6	-	-	9	4	13	12	212	49
Idaho.....	-	1	-	1	-	-	-	-	4	11	54	13
Wyoming.....	-	1	-	-	-	-	-	-	-	4	1	-
Colorado.....	-	2	-	-	-	-	5	-	10	13	83	66
New Mexico.....	-	-	-	5	-	-	3	-	3	3	NN	NN
Arizona.....	-	6	-	-	-	-	-	-	8	20	45	29
Utah.....	-	5	-	-	-	-	5	3	8	6	39	39
Nevada.....	-	-	-	-	-	-	-	-	-	-	-	1
PACIFIC.....	-	36	-	11	4	4	48	50	105	138	356	403
Washington.....	-	-	-	-	-	1	9	9	19	32	46	138
Oregon.....	-	3	-	-	-	-	6	-	10	16	60	58
California.....	-	30	-	6	4	3	32	39	73	89	249	123
Alaska.....	-	2	-	5	-	-	1	2	3	1	1	78
Hawaii.....	---	1	---	-	---	-	---	---	---	-	---	6
Puerto Rico.....	-	-	-	36	-	-	1	4	5	19	5	23

Table 3. CASES OF SPECIFIED NOTIFIABLE DISEASES: UNITED STATES
FOR WEEKS ENDED
DECEMBER 30, 1961 AND DECEMBER 29, 1962 - (Continued)

Area	Meningococcal Infections		Streptococcal Sore Throat & Scarlet Fever		Tetanus	Tickborne Typhus (Rocky Mt. Spotted)	Tularemia	Typhoid Fever		Rabies in Animals		
	52nd wk.	Cumulative 52 weeks	52nd week		52nd wk.	52nd wk.	52nd wk.	52nd wk.	Cumulative 52 weeks	52nd week		Cumulative 52 weeks
			1962	1961						1962	1961	
	1962	1962	1962	1961	1962	1962	1962	1962	1962	1962	1961	1962
UNITED STATES....	37	2,122	5,473	6,094	1	-	5	10	622	44	79	3,548
NEW ENGLAND.....	1	125	464	303	-	-	-	-	11	-	-	2
Maine.....	-	19	93	10	-	-	-	-	2	-	-	1
New Hampshire.....	-	4	20	2	-	-	-	-	-	-	-	-
Vermont.....	-	4	-	4	-	-	-	-	-	-	-	-
Massachusetts.....	1	52	91	112	-	-	-	-	8	-	-	1
Rhode Island.....	-	13	29	27	-	-	-	-	1	-	-	-
Connecticut.....	-	33	231	148	-	-	-	-	-	-	-	-
MIDDLE ATLANTIC....	9	379	330	281	-	-	-	2	69	4	2	169
New York.....	3	161	187	157	-	-	-	1	35	2	2	111
New Jersey.....	2	93	63	50	-	-	-	1	14	-	-	1
Pennsylvania.....	4	125	80	74	-	-	-	-	20	2	-	57
EAST NORTH CENTRAL..	5	412	707	439	-	-	2	1	93	6	5	742
Ohio.....	1	122	60	60	-	-	-	-	44	4	-	380
Indiana.....	1	32	142	58	-	-	-	-	12	-	3	186
Illinois.....	-	91	197	123	-	-	2	1	18	1	2	93
Michigan.....	3	143	161	76	-	-	-	-	12	1	-	47
Wisconsin.....	-	24	147	122	-	-	-	-	7	-	-	36
WEST NORTH CENTRAL..	-	115	175	208	-	-	2	-	32	9	22	943
Minnesota.....	-	25	15	21	-	-	-	-	-	2	8	240
Iowa.....	-	13	50	28	-	-	-	-	2	1	3	352
Missouri.....	-	27	3	7	-	-	-	-	25	3	2	161
North Dakota.....	-	8	95	77	-	-	-	-	2	2	2	54
South Dakota.....	-	10	5	-	-	-	-	-	1	1	6	108
Nebraska.....	-	17	1	-	-	-	-	-	2	-	1	21
Kansas.....	-	15	6	75	-	-	2	-	-	-	-	7
SOUTH ATLANTIC.....	4	318	496	366	-	-	-	4	107	2	1	371
Delaware.....	-	35	2	5	-	-	-	-	2	-	-	-
Maryland.....	-	26	37	13	-	-	-	-	3	-	-	11
Dist. of Columbia..	-	7	1	2	-	-	-	-	10	-	-	-
Virginia.....	1	75	217	149	-	-	-	-	19	-	1	137
West Virginia.....	1	19	157	107	-	-	-	-	5	2	-	146
North Carolina.....	1	72	11	14	-	-	-	4	10	-	-	1
South Carolina.....	-	21	33	17	-	-	-	-	9	-	-	-
Georgia.....	-	12	3	7	-	-	-	-	24	-	-	12
Florida.....	1	51	35	52	-	-	-	-	25	-	-	64
EAST SOUTH CENTRAL..	5	140	820	1,250	-	-	1	1	76	10	6	370
Kentucky.....	1	43	57	158	-	-	-	1	27	2	4	137
Tennessee.....	3	57	651	1,048	-	-	1	-	29	8	2	210
Alabama.....	-	21	13	8	-	-	-	-	12	-	-	23
Mississippi.....	1	19	99	36	-	-	-	-	8	-	-	-
WEST SOUTH CENTRAL..	3	180	607	901	-	-	-	1	127	4	36	609
Arkansas.....	-	21	-	7	-	-	-	1	34	1	30	70
Louisiana.....	2	77	9	2	-	-	-	-	32	-	1	25
Oklahoma.....	-	8	13	8	-	-	-	-	7	3	-	31
Texas.....	1	74	585	884	-	-	-	-	54	-	5	483
MOUNTAIN.....	1	69	1,202	1,455	1	-	-	-	48	1	3	41
Montana.....	-	6	104	83	-	-	-	-	10	-	-	-
Idaho.....	-	3	122	121	-	-	-	-	1	-	-	-
Wyoming.....	-	5	-	-	-	-	-	-	3	-	-	-
Colorado.....	1	12	467	655	-	-	-	-	8	-	2	4
New Mexico.....	-	9	219	252	-	-	-	-	13	-	-	13
Arizona.....	-	15	104	259	1	-	-	-	11	1	1	24
Utah.....	-	10	186	83	-	-	-	-	2	-	-	-
Nevada.....	-	9	-	2	-	-	-	-	-	-	-	-
PACIFIC.....	9	384	672	891	-	-	-	1	59	8	4	301
Washington.....	-	26	153	213	-	-	-	-	3	-	-	-
Oregon.....	1	23	20	19	-	-	-	-	1	-	-	17
California.....	6	316	499	597	-	-	-	1	53	8	4	284
Alaska.....	2	11	-	49	-	-	-	-	1	-	-	-
Hawaii.....	---	8	---	13	---	---	---	---	1	---	---	-
Puerto Rico.....	-	9	1	7	-	-	-	-	17	-	1	20

Morbidity and Mortality Weekly Report

415

Table 4 (D). TOTAL DEATHS AMONG PERSONS 65 YEARS AND OVER IN REPORTING CITIES

(Tables 4(A), 4(B), 4(C), and 4(D) will be published in sequence covering a four-week period.)^o

Area	For weeks ending				Area	For weeks ending			
	12/8	12/15	12/22	12/29		12/8	12/15	12/22	12/29
NEW ENGLAND:					SOUTH ATLANTIC:				
Boston, Mass.....	148	146	147	138	Atlanta, Ga.....	62	60	60	56
Bridgeport, Conn.....	36	29	37	25*	Baltimore, Md.....	141	128	160	138
Cambridge, Mass.....	24	13	25	29	Charlotte, N.C.....	10	16	17	12
Fall River, Mass.....	11	19	18	29	Jacksonville, Fla.....	22	24	36	33
Hartford, Conn.....	27	37	23	36	Miami, Fla.....	33	47	63	54
Lowell, Mass.....	10	15	23	14	Norfolk, Va.....	25	23	31	25
Lynn, Mass.....	24	26	18	17	Richmond, Va.....	33	43	36	55
New Bedford, Mass.....	17	13	20	22	Savannah, Ga.....	28	11	16	11
New Haven, Conn.....	36	35	34	34	St. Petersburg, Fla.....	68	68	85	69
Providence, R.I.....	43	44	45	45	Tampa, Fla.....	45	36	57	46
Somerville, Mass.....	13	8	13	10	Washington, D.C.....	104	80	107	102
Springfield, Mass.....	38	31	37	23	Wilmington, Del.....	21	23	12	30
Waterbury, Conn.....	20	27	23	20	EAST SOUTH CENTRAL:				
Worcester, Mass.....	43	40	42	38	Birmingham, Ala.....	42	43	55	30
MIDDLE ATLANTIC:					Chattanooga, Tenn.....	28	21	25	22
Albany, N.Y.....	21	25	23	39	Knoxville, Tenn.....	15	14	19	10
Allentown, Pa.....	23	18	20	18	Louisville, Ky.....	86	71	77	42
Buffalo, N.Y.....	86	86	99	71	Memphis, Tenn.....	77	58	43	60
Camden, N.J.....	19	23	28	29	Mobile, Ala.....	25	19	27	31
Elizabeth, N.J.....	21	22	15	18*	Montgomery, Ala.....	13	21	16	20
Erie, Pa.....	36	18	30	22	Nashville, Tenn.....	39	30	37	26
Jersey City, N.J.....	49	29	62	39	WEST SOUTH CENTRAL:				
Newark, N.J.....	60	45	62	46	Austin, Tex.....	13	21	31	22
New York City, N.Y.....	994	980	1,082	1,104	Baton Rouge, La.....	8	10	20	16
Paterson, N.J.....	33	25	28	24	Corpus Christi, Tex.....	5	16	16	6
Philadelphia, Pa.....	294	256	274	275	Dallas, Tex.....	68	63	86	70
Pittsburgh, Pa.....	135	112	112	62	El Paso, Tex.....	13	19	20	15
Reading, Pa.....	17	14	15	19	Fort Worth, Tex.....	57	33	35	30
Rochester, N.Y.....	81	73	73	101	Houston, Tex.....	69	80	91	62
Schenectady, N.Y.....	18	11	13	20	Little Rock, Ark.....	41	39	33	23
Scranton, Pa.....	22	34	33	19	New Orleans, La.....	68	83	81	111
Syracuse, N.Y.....	40	45	44	47	Oklahoma City, Okla.....	51	39	38	37
Trenton, N.J.....	15	28	30	31	San Antonio, Tex.....	50	55	68	51
Utica, N.Y.....	21	11	20	12	Shreveport, La.....	20	32	41	17
Yonkers, N.Y.....	12	22	20	19	Tulsa, Okla.....	50	35	24	25
EAST NORTH CENTRAL:					MOUNTAIN:				
Akron, Ohio.....	24	44	35	39	Albuquerque, N. Mex.....	18	15	20	20
Canton, Ohio.....	20	23	21	20	Colorado Springs, Colo.....	21	9	17	10
Chicago, Ill.....	371	371	439	406	Denver, Colo.....	61	64	65	42
Cincinnati, Ohio.....	97	84	106	95	Ogden, Utah.....	8	10	15	5
Cleveland, Ohio.....	121	96	128	87	Phoenix, Ariz.....	43	43	62	40
Columbus, Ohio.....	47	62	80	64*	Pueblo, Colo.....	11	10	10	9
Dayton, Ohio.....	53	39	56	42	Salt Lake City, Utah.....	19	23	24	29
Detroit, Mich.....	202	211	188	196	Tucson, Ariz.....	30	23	26	30
Evansville, Ind.....	22	36	36	20	PACIFIC:				
Flint, Mich.....	20	22	30	17	Berkeley, Calif.....	21	11	17	10
Fort Wayne, Ind.....	29	25	33	14	Fresno, Calif.....	21	25	25	26
Gary, Ind.....	14	10	14	19	Glendale, Calif.....	23	24	28	18
Grand Rapids, Mich.....	42	26	22	28	Honolulu, Hawaii.....	8	20	17	27
Indianapolis, Ind.....	84	98	88	94	Long Beach, Calif.....	25	38	23	48
Madison, Wis.....	27	13	40	27	Los Angeles, Calif.....	281	319	327	261
Milwaukee, Wis.....	86	75	69	74	Oakland, Calif.....	48	43	42	73
Peoria, Ill.....	12	22	16	21	Pasadena, Calif.....	29	22	23	27
Rockford, Ill.....	20	16	23	18	Portland, Oreg.....	83	69	65	61
South Bend, Ind.....	15	23	40	29	Sacramento, Calif.....	24	35	43	37
Toledo, Ohio.....	56	64	66	58	San Diego, Calif.....	70	45	45	63
Youngstown, Ohio.....	31	34	48	32	San Francisco, Calif.....	119	85	135	100
WEST NORTH CENTRAL:					San Jose, Calif.....	21	14	18	19
Des Moines, Iowa.....	36	31	34	23	Seattle, Wash.....	83	71	93	75
Duluth, Minn.....	15	12	16	10	Spokane, Wash.....	31	35	34	33
Kansas City, Kans.....	20	18	22	12	Tacoma, Wash.....	12	30	22	21
Kansas City, Mo.....	85	89	86	79	San Juan, P.R.....	17	12	17	(---)
Lincoln, Nebr.....	19	25	19	23	^o Current Week Mortality for 108 Selected Cities				
Minneapolis, Minn.....	72	79	67	76	4(A) Total Mortality, all ages.....	11,118			
Omaha, Nebr.....	50	34	36	31	4(B) Pneumonia-Influenza Deaths, all ages.....	451			
St. Louis, Mo.....	121	151	169	144	4(C) Total Deaths under 1 Year of Age.....	613			
St. Paul, Minn.....	42	56	57	52	4(D) Total Deaths, Persons 65 years and over.....	6,462			
Wichita, Kans.....	23	28	25	22					

*Estimate - based on average percent of divisional total
Totals for previous weeks include reported corrections.

NOTE: All deaths by place of occurrence.

central areas of the city which housed the lowest socio-economic group. Under 50% of the population in these high risk areas responded. These were the same areas which responded poorly to an immunization campaign in 1959.

(Reported by O. M. Goodloe, M. D., Commissioner, Columbus, Health Department, and H. J. Leuchter, M.D., Medical Service Chief.)

INTERNATIONAL NOTES – QUARANTINE MEASURES

No Report.

Library
81
7 61
CDC

U. S. DEPARTMENT OF
HEALTH, EDUCATION, AND WELFARE
PUBLIC HEALTH SERVICE
Communicable Disease Center
Atlanta 22, Georgia
Official Business

POSTAGE AND FEES PAID
U. S. DEPARTMENT OF H. E. W.

MAIL