

C	ID	Date	C	ID	Date	C	ID	Date
AL	JF722522	2004	CM	AY265442	1998	CM	AY685018	2002
BF	AF037239	1995	CM	AY265443	1998	CM	AY685022	2002
BF	AF037244	1995	CM	AY265444	1998	CM	AY685029	2002
BF	AF037245	1995	CM	AY265449	1998	CM	AY685033	2002
BF	AF037247	1995	CM	AY265451	1998	CM	AY685037	2002
BF	AF037248	1995	CM	AY632155	2003	CM	AY685040	2002
BF	AF037249	1995	CM	AY632157	2003	CM	AY685043	2002
BF	AF037250	1995	CM	AY632158	2003	CM	AY685048	2002
BF	AF037251	1995	CM	AY632159	2003	<b>GB</b>	<b>GQ153856</b>	<b>1984</b>
BF	AF037252	1995	CM	AY632160	2003	<b>GB</b>	<b>GQ153857</b>	<b>1984</b>
BF	AF037253	1995	CM	AY632161	2003	<b>GB</b>	<b>GQ153858</b>	<b>1984</b>
BN	AF037240	1994	CM	AY632162	2003	GB	GQ153859	2005
BN	AF037241	1994	CM	AY632163	2003	<b>GB</b>	<b>GQ153859</b>	<b>1984</b>
BN	AF037242	1994	CM	AY632164	2003	<b>GB</b>	<b>GQ153860</b>	<b>1984</b>
BN	AF037243	1994	CM	AY632165	2003	<b>GB</b>	<b>GQ153861</b>	<b>1984</b>
CA	FJ791087	2006	CM	AY632166	2003	<b>GB</b>	<b>GQ153865</b>	<b>1984</b>
CA	FJ791088	2006	CM	AY632167	2003	<b>GB</b>	<b>GQ153866</b>	<b>1984</b>
CA	FJ791094	2006	CM	AY632168	2003	<b>GB</b>	<b>GQ153867</b>	<b>1984</b>
CA	FJ791099	2006	CM	AY632169	2003	<b>GB</b>	<b>GQ153869</b>	<b>1984</b>
<u>CI</u>	<u>KC012573</u>	<u>1995</u>	CM	AY632170	2003	<b>GB</b>	<b>GQ153871</b>	<b>1984</b>
<u>CI</u>	<u>KC012577</u>	<u>1995</u>	CM	AY632171	2003	<b>GB</b>	<b>GQ153872</b>	<b>1984</b>
<u>CI</u>	<u>KC012578</u>	<u>1995</u>	CM	AY632172	2003	<b>GB</b>	<b>GQ153873</b>	<b>1984</b>
<u>CI</u>	<u>KC012585</u>	<u>1995</u>	CM	AY632173	2003	GB	GQ153874	1984
<u>CI</u>	<u>KC012587</u>	<u>1995</u>	CM	AY632174	2003	GB	GQ153875	1984
<u>CI</u>	<u>KC012588</u>	<u>1995</u>	CM	AY632175	2003	GB	GQ153876	1984
CM	AY257076	1998	CM	AY632176	2003	GB	GQ153879	1984
CM	AY257079	1998	CM	AY632177	2003	GB	GQ153880	1984
CM	AY257080	1998	CM	AY632178	2003	<b>GB</b>	<b>GQ153881</b>	<b>1984</b>
CM	AY257081	1998	CM	AY632179	2003	<b>GB</b>	<b>GQ153884</b>	<b>1984</b>
CM	AY257084	1998	CM	AY632180	2003	<b>GB</b>	<b>GQ153885</b>	<b>1984</b>
CM	AY257088	1998	CM	AY632181	2003	<b>GB</b>	<b>GQ153886</b>	<b>1984</b>
CM	AY257099	1998	CM	AY632182	2003	<b>GB</b>	<b>GQ153888</b>	<b>1984</b>
CM	AY257100	1998	CM	AY632183	2003	<b>GB</b>	<b>GQ153889</b>	<b>1984</b>
CM	AY265420	1998	CM	AY632184	2003	<b>GB</b>	<b>GQ153891</b>	<b>1984</b>
CM	AY265422	1998	CM	AY632185	2003	<b>GB</b>	<b>GQ153892</b>	<b>1984</b>
CM	AY265423	1998	CM	AY632186	2003	<b>GB</b>	<b>GQ153893</b>	<b>1984</b>
CM	AY265426	1998	CM	AY632187	2003	<b>GB</b>	<b>GQ153894</b>	<b>1984</b>
CM	AY265427	1998	CM	AY632188	2003	<b>GB</b>	<b>GQ153896</b>	<b>1984</b>
CM	AY265433	1998	CM	AY632189	2003	<b>GB</b>	<b>GQ153898</b>	<b>1984</b>
CM	AY265437	1998	CM	AY632190	2003	<b>GB</b>	<b>GQ153899</b>	<b>1984</b>

C	ID	Date	C	ID	Date	C	ID	Date
<b>GB</b>	<b>GQ153900</b>	<b>1984</b>	<u>GH</u>	<u>K177</u>	<u>2013</u>	<u>GH</u>	<u>K61</u>	<u>2013</u>
<b>GB</b>	<b>GQ153901</b>	<b>1984</b>	<u>GH</u>	<u>K188</u>	<u>2013</u>	<u>GH</u>	<u>K62</u>	<u>2013</u>
<b>GB</b>	<b>GQ153902</b>	<b>1984</b>	<u>GH</u>	<u>K194</u>	<u>2013</u>	<u>GH</u>	<u>K63</u>	<u>2013</u>
<b>GB</b>	<b>GQ153903</b>	<b>1984</b>	<u>GH</u>	<u>K199</u>	<u>2013</u>	<u>GH</u>	<u>K65</u>	<u>2013</u>
GB	GQ153904	1984	<u>GH</u>	<u>K200</u>	<u>2013</u>	<u>GH</u>	<u>K66</u>	<u>2013</u>
<b>GB</b>	<b>GQ153905</b>	<b>1984</b>	<u>GH</u>	<u>K201</u>	<u>2013</u>	<u>GH</u>	<u>K69</u>	<u>2013</u>
<b>GB</b>	<b>GQ153906</b>	<b>1984</b>	<u>GH</u>	<u>K204</u>	<u>2013</u>	<u>GH</u>	<u>K80</u>	<u>2013</u>
<b>GB</b>	<b>GQ153907</b>	<b>1984</b>	<u>GH</u>	<u>K205</u>	<u>2013</u>	<u>GH</u>	<u>K84</u>	<u>2013</u>
<b>GB</b>	<b>GQ153908</b>	<b>1984</b>	<u>GH</u>	<u>K20</u>	<u>2013</u>	<u>GH</u>	<u>K85</u>	<u>2013</u>
<b>GB</b>	<b>GQ153909</b>	<b>1984</b>	<u>GH</u>	<u>K215</u>	<u>2013</u>	GU	AF037246	1995
<b>GB</b>	<b>GQ153910</b>	<b>1984</b>	<u>GH</u>	<u>K217</u>	<u>2013</u>	MD	DQ345614	2004
<b>GB</b>	<b>GQ153911</b>	<b>1984</b>	<u>GH</u>	<u>K218</u>	<u>2013</u>	MD	DQ345615	2004
GH	AY236367	1999	<u>GH</u>	<u>K221</u>	<u>2013</u>	MD	DQ345616	2004
GH	AY236368	1999	<u>GH</u>	<u>K222</u>	<u>2013</u>	MD	DQ345617	2004
GH	AY236369	1999	<u>GH</u>	<u>K227</u>	<u>2013</u>	MD	DQ345618	2004
GH	AY236370	1999	<u>GH</u>	<u>K22</u>	<u>2013</u>	MD	DQ345622	2004
GH	AY236371	1999	<u>GH</u>	<u>K233</u>	<u>2013</u>	MD	DQ345628	2004
GH	AY236372	1999	<u>GH</u>	<u>K235</u>	<u>2013</u>	MD	DQ345629	2004
GH	AY236373	1999	<u>GH</u>	<u>K236</u>	<u>2013</u>	MO	HQ699735	2009
GH	AY236374	1999	<u>GH</u>	<u>K239</u>	<u>2013</u>	MO	HQ699738	2009
GH	AY236375	1999	<u>GH</u>	<u>K246</u>	<u>2013</u>	MO	HQ699739	2009
GH	AY236376	1999	<u>GH</u>	<u>K248</u>	<u>2013</u>	MO	HQ699743	2010
GH	AY236377	1999	<u>GH</u>	<u>K250</u>	<u>2013</u>	MO	HQ699748	2009
GH	AY236378	1999	<u>GH</u>	<u>K254</u>	<u>2013</u>	MO	HQ699749	2010
GH	AY236379	1999	<u>GH</u>	<u>K257</u>	<u>2013</u>	MO	HQ699750	2010
GH	AY236380	1999	<u>GH</u>	<u>K26</u>	<u>2013</u>	MO	HQ699753	2010
GH	AY236381	1999	<u>GH</u>	<u>K270</u>	<u>2013</u>	MO	HQ699761	2010
GH	AY236382	1999	<u>GH</u>	<u>K291</u>	<u>2013</u>	MO	HQ699763	2009
GH	AY236383	1999	<u>GH</u>	<u>K32</u>	<u>2013</u>	MO	HQ699764	2009
GH	AY236384	1999	<u>GH</u>	<u>K336</u>	<u>2013</u>	MO	HQ699770	2009
GH	AY236385	1999	<u>GH</u>	<u>K33</u>	<u>2013</u>	MO	HQ699771	2009
GH	AY236386	1999	<u>GH</u>	<u>K354</u>	<u>2013</u>	MO	HQ699773	2010
GH	AY236387	1999	<u>GH</u>	<u>K359</u>	<u>2013</u>	MO	HQ699774	2010
GH	JF722602	2000	<u>GH</u>	<u>K39</u>	<u>2013</u>	MO	JF722515	2001
<u>GH</u>	<u>K11</u>	<u>2013</u>	<u>GH</u>	<u>K3</u>	<u>2013</u>	MO	JF722518	2005
<u>GH</u>	<u>K134</u>	<u>2013</u>	<u>GH</u>	<u>K41</u>	<u>2013</u>	MO	JF722524	2001
<u>GH</u>	<u>K135</u>	<u>2013</u>	<u>GH</u>	<u>K44</u>	<u>2013</u>	MO	JF722529	2003
<u>GH</u>	<u>K141</u>	<u>2013</u>	<u>GH</u>	<u>K46</u>	<u>2013</u>	MO	JF722535	2001
<u>GH</u>	<u>K154</u>	<u>2013</u>	<u>GH</u>	<u>K59</u>	<u>2013</u>	MO	JF722547	2000
<u>GH</u>	<u>K163</u>	<u>2013</u>	<u>GH</u>	<u>K60</u>	<u>2013</u>	MO	JF722553	2002

C	ID	Date	C	ID	Date	C	ID	Date
MO	JF722559	2002	TN	JQ650282	2008	TN	JQ650316	2008
MO	JF722599	2003	TN	JQ650283	2004	TN	JQ650317	2009
<u>NG</u>	<u>JQ679028</u>	<u>2007</u>	TN	JQ650284	2007	TN	JQ650318	2008
<u>NG</u>	<u>JQ679029</u>	<u>2007</u>	TN	JQ650285	2006	TN	JQ650319	2006
<u>NG</u>	<u>JQ679030</u>	<u>2007</u>	TN	JQ650286	2009	TN	JQ650320	2007
<u>NG</u>	<u>JQ679031</u>	<u>2007</u>	TN	JQ650287	2004	TN	JQ650321	2009
<u>NG</u>	<u>JQ679032</u>	<u>2007</u>	TN	JQ650288	2009	TN	JQ650322	2004
<u>NG</u>	<u>JQ679033</u>	<u>2007</u>	TN	JQ650289	2006	TN	JQ650323	2008
<u>NG</u>	<u>JQ679034</u>	<u>2007</u>	TN	JQ650290	2007	TN	JQ650324	2003
<u>NG</u>	<u>JQ679035</u>	<u>2007</u>	TN	JQ650291	2007	TN	JQ650325	2006
<u>NG</u>	<u>JQ679036</u>	<u>2007</u>	TN	JQ650292	2008	TN	JQ650326	2004
TN	JQ650260	2005	TN	JQ650293	2005	TN	JQ650327	2004
TN	JQ650261	2009	TN	JQ650294	2009	TN	JQ650328	2008
TN	JQ650262	2007	TN	JQ650295	2006	TN	JQ650329	2007
TN	JQ650263	2008	TN	JQ650296	2008	TN	JQ650330	2007
TN	JQ650264	2008	TN	JQ650297	2009	TN	JQ650331	2005
TN	JQ650265	2004	TN	JQ650298	2004	TN	JQ650332	2008
TN	JQ650266	2004	TN	JQ650299	2005	TN	JQ650333	2005
TN	JQ650267	2009	TN	JQ650300	2008	TN	JQ650334	2008
TN	JQ650268	2007	TN	JQ650301	2005	TN	JQ650335	2008
TN	JQ650269	2008	TN	JQ650302	2008	TN	JQ650336	2005
TN	JQ650270	2003	TN	JQ650303	2003	TN	JQ650337	2009
TN	JQ650271	2009	TN	JQ650304	2005	TN	JQ650338	2007
TN	JQ650272	2007	TN	JQ650305	2009	TN	JQ650339	2009
TN	JQ650273	2007	TN	JQ650306	2008	TN	JQ650340	2007
TN	JQ650274	2009	TN	JQ650307	2006	TN	JQ650341	2006
TN	JQ650275	2004	TN	JQ650308	2005	TN	JQ650342	2004
TN	JQ650276	2007	TN	JQ650309	2008	TN	JQ650343	2007
TN	JQ650277	2008	TN	JQ650310	2008	TN	JQ650344	2005
TN	JQ650278	2009	TN	JQ650311	2007	TN	JQ650345	2005
TN	JQ650279	2008	TN	JQ650312	2008	TN	JQ650346	2005
TN	JQ650280	2005	TN	JQ650313	2004	TN	JQ650347	2005
TN	JQ650281	2007	TN	JQ650314	2008	TN	JQ650348	2004
			TN	JQ650315	2005			

Supplemental Table 1. Sequences used for analysis. Plain text, sequences used in the trim1 and trim2 sequence analyses; bold, sequences added to the trim2 sequence analysis; underline, sequences added in this paper; C, two letter country code; ID, sequence ID, Date, date of collection. Two letter country codes: AL, Algeria; BF, Burkina Faso; BN, Benin; CA, Central African Republic; CI, Côte d'Ivoire; CM, Cameroon; GB, Guinea-Bissau; GH, Ghana; GU, Guinea; MD, Madagascar; MO, Morocco; NG, Nigeria; TN, Tunisia.

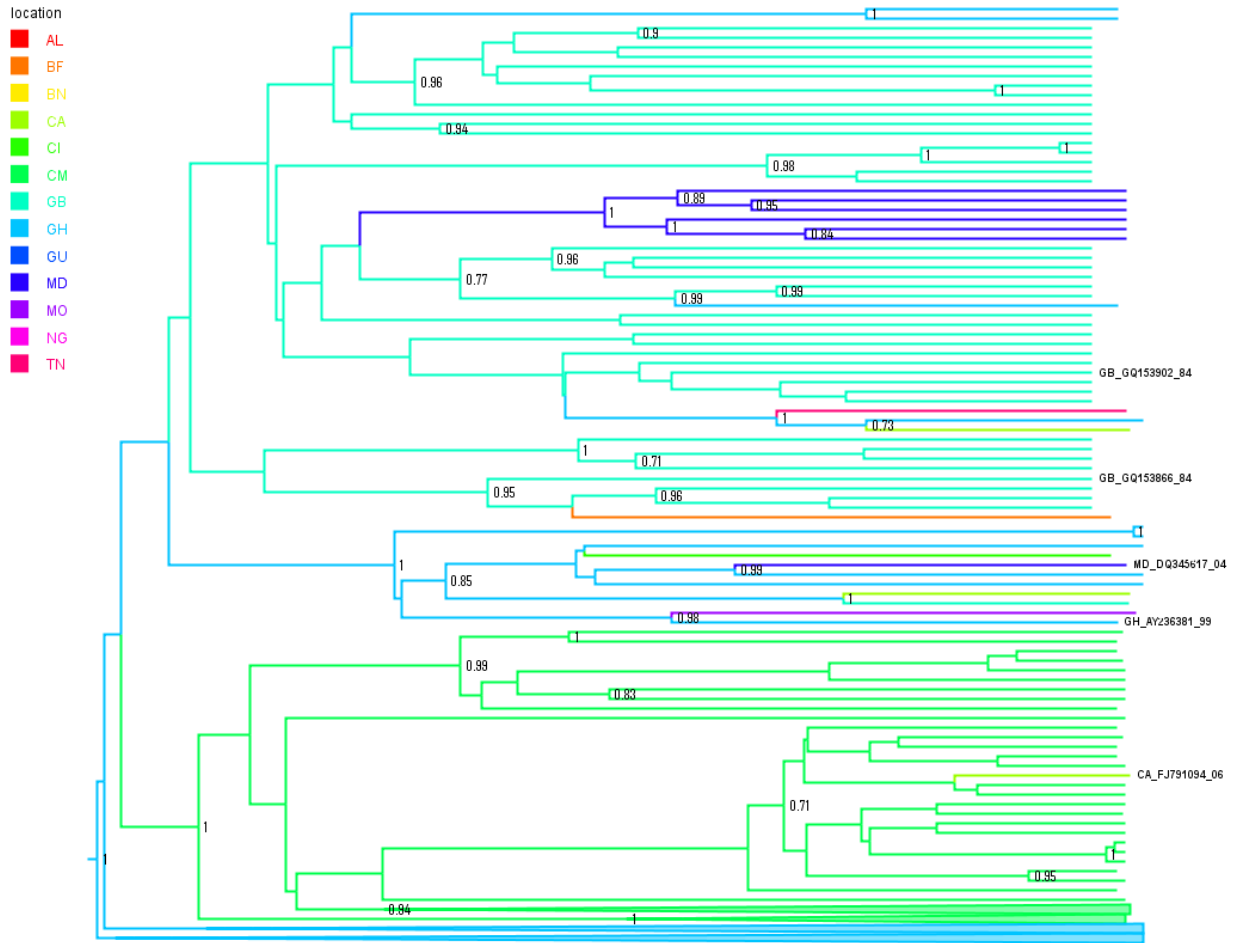


Figure S1. Repositioning of “outgroup” sequences from Markov et al., 2009. The legend in the upper left corner shows the color coding for the branches in the tree. Sequence IDs are for the “outgroup” sequences labeled with two letter country code (see Table 2), accession number and year of collection as the last two digits in the year. The numbers at the nodes of the tree are posterior probabilities. Posterior probabilities less than 0.7 were excluded. Some branches on this tree were collapsed for ease of viewing.