

RECEIVED
JUL 12 1962

CITY LIBRARY
ATLANTA

Morbidity and Mortality

Weekly Report

U. S. DEPARTMENT OF HEALTH, EDUCATION, AND WELFARE
PUBLIC HEALTH SERVICE

Prepared by the COMMUNICABLE DISEASE CENTER MEIrose 4-5131

For release July 13, 1962 ATLANTA 22, GEORGIA Vol. 11, No. 27

PROVISIONAL INFORMATION ON SELECTED NOTIFIABLE DISEASES IN THE UNITED STATES AND ON DEATHS IN SELECTED CITIES FOR WEEK ENDED JULY 7, 1962

POLIOMYELITIS - Seventeen cases of poliomyelitis, 12 paralytic, were reported for the 27th week of 1962 ending July 7. Texas again reported the largest proportion of cases with 12, of which 8 were paralytic. California reported two paralytic cases and West Virginia and Minnesota accounted for one each. The Minnesota case was the second to occur in Polk County with onset in June.

There have now been 220 cases, 170 paralytic, reported in the United States through July 7, 1962. Of these 170 paralytic cases, 148 have had onset in 1962. Texas has accounted for 84 of the 148 paralytic cases (57 percent).

The 1962 experience in Texas is compared with that of the past three years in the figure on page 210. Through June of this year, the total number of cases exceeds the total in 1960 and 1961 and approximates that of 1959 when, for the year, 325 paralytic cases were reported.

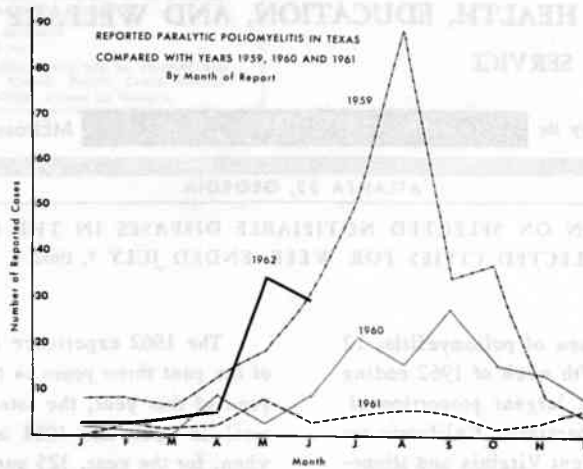
The 84 paralytic cases in Texas during the current year have occurred throughout the State as shown in the map on page 210. Five counties have reported six or more cases: Bexar County (San Antonio), Webb County (Laredo), Harris County (Houston), Frio County, and Dallas County (Dallas). Although the scene of poliomyelitis activity was focused initially in the South Texas

Table 1. CASES OF SPECIFIED NOTIFIABLE DISEASES: UNITED STATES
(Cumulative totals include revised and delayed reports through previous week)

Disease	27th Week			Cumulative		
	Ended July 7, 1962	Ended July 8, 1961	Median 1957 - 1961	First 27 weeks		Median 1957 - 1961
				1962	1961	
Aseptic meningitis.....	51	28	---	653	734	---
Brucellosis.....	8	8	14	212	289	403
Diphtheria.....	4	5	5	223	313	346
Encephalitis, infectious.....	30	17	33	792	764	765
Hepatitis, infectious and serum.....	605	1,009	310	32,171	43,933	12,262
Measles.....	6,559	6,087	6,474	422,966	365,760	372,229
Meningococcal infections.....	27	17	33	1,240	1,228	1,383
Poliomyelitis, total.....	17	10	62	220	249	683
Paralytic.....	12	7	31	170	162	341
Nonparalytic.....	4	2	22	32	54	233
Unspecified.....	1	1	9	18	33	109
Streptococcal sore throat and Scarlet fever.....	3,531	2,767	---	200,270	210,661	---
Tetanus.....	8	---	---	107	---	---
Tularemia.....	5	---	---	136	---	---
Typhoid fever.....	14	19	22	258	311	352
Typhus fever, tick-borne, (Rocky Mountain spotted).....	11	---	---	86	---	---
Rabies in Animals.....	70	77	72	2,226	1,904	2,101

Table 2. NOTIFIABLE DISEASES OF LOW FREQUENCY

Anthrax:	Psittacosis: Wis. - 1, Calif. - 1
Botulism:	Rabies in Man:
Malaria: N. J. - 1, Mo. - 1	Smallpox:
Plague:	Typhus, murine: Fla. - 1, Tex. - 1



Counties, it has since shifted to Dallas, Harris, and other counties in the more northern part of the State. All counties with at least 6 paralytic cases are shown below by week of onset:

Week Ending:	Prior to										
	5/5	5/5	5/12	5/19	5/26	6/2	6/9	6/16	6/23	6/30	
Bexar Co.	4	3	0	3	0	3	4	4	0	1	
Frio Co.	0	0	0	0	4	2	1	1	0	0	
Webb Co.	4	1	2	1	0	0	0	0	0	0	
Harris Co.	0	0	0	0	0	4	1	0	1	0	
Dallas Co.*	0	0	0	0	0	0	1	1	0	2	

* Two cases with unknown onset not shown; both reported in late June.

Oral vaccine immunization programs were carried out during late May and early June in the several southern counties as shown on the map. In these counties, only one case has occurred since June 13. This case had received neither inactivated nor oral vaccine.

Both Harris and Dallas Counties plan oral vaccine programs in late July. Type I poliovirus has been isolated from cases in these two areas.

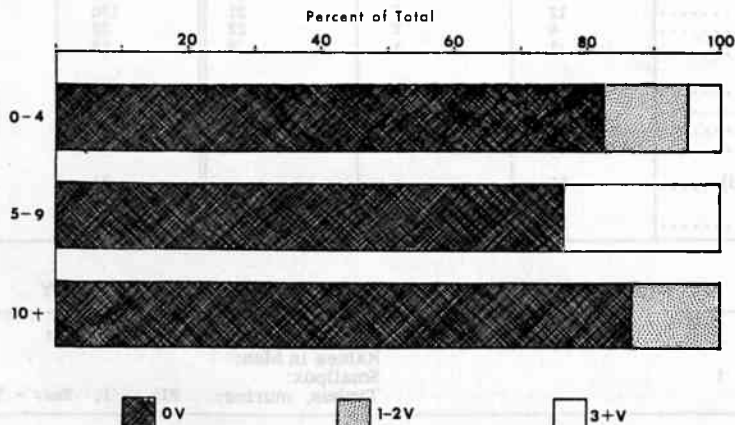
Of the 84 paralytic cases reported thus far in 1962, the CDC Poliomyelitis Surveillance Unit has received individual case forms on 63. These cases are shown below by age group and history of immunization with inactivated vaccine. Seventy percent of the cases have been among pre-school children; over 80 percent have been unvaccinated. The data is depicted graphically in a proportional bar diagram.

PARALYTIC POLIOMYELITIS BY AGE GROUP AND VACCINATION HISTORY, TEXAS, 1962*

Age Group	Inactivated Vaccine			TOTAL
	OV	1-2V	3+V	
0-4	36	6	2	44
5-9	9	0	3	12
10+	6	1	0	7
TOTAL	51	7	5	63

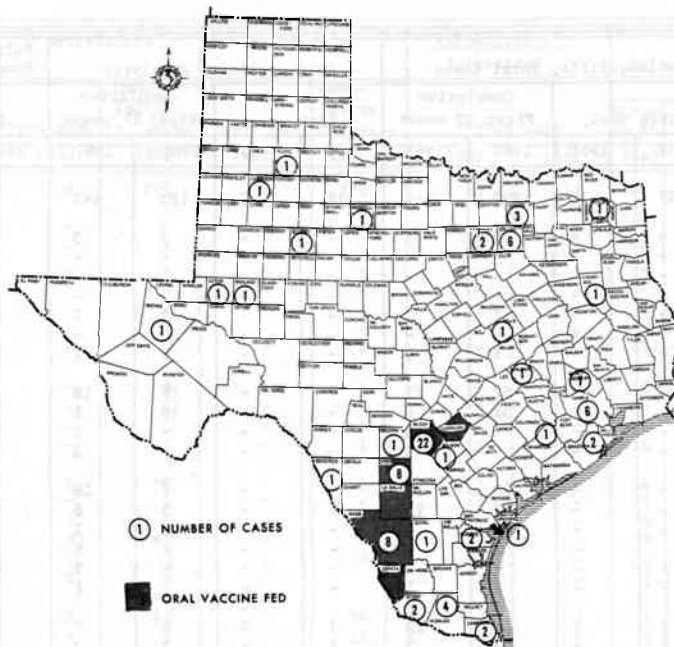
* Cases reported to the CDC Poliomyelitis Surveillance Unit on individual case forms through June 30, 1962.

PARALYTIC POLIOMYELITIS BY AGE GROUP AND VACCINATION STATUS, TEXAS, 1962*



* Cases reported to CDC Poliomyelitis Surveillance Unit on individual case forms through June 30, 1962.

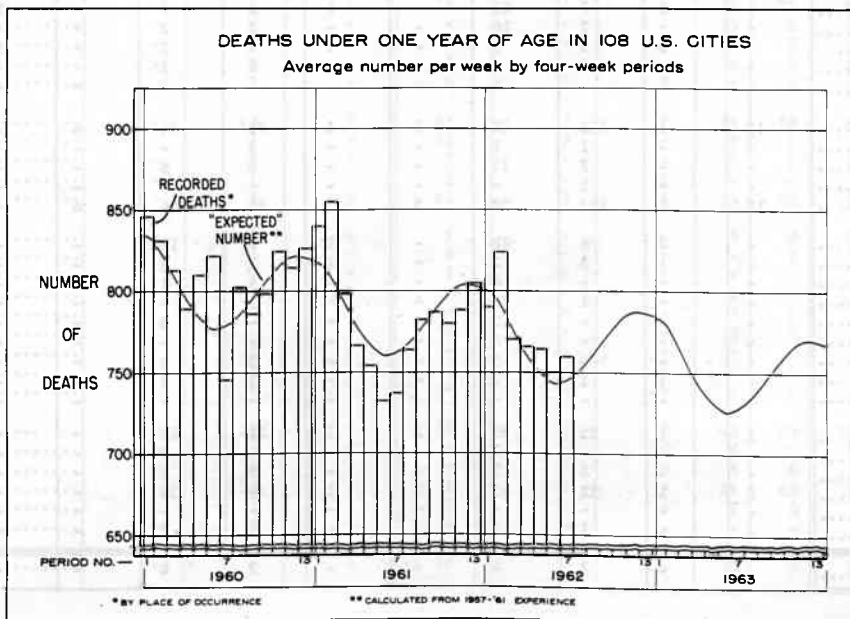
REPORTED PARALYTIC POLIOMYELITIS IN TEXAS BY COUNTY
1962 ONSET THROUGH JULY 7



INFANT DEATHS IN 108 CITIES

The weekly average number of infant deaths in 108 cities for the four-week period ending July 7 was 760 as compared with an expected 746 weekly average.

	WEEK ENDING				4 Week Total	Weekly Average
	6/16	6/23	6/30	7/7		
Observed	761	754	801	723	3,039	760
Expected	744	745	746	747	2,982	746
Excess	17	9	55	-24	57	14



(See Table, Page 215)

Morbidity and Mortality Weekly Report

Table 3. CASES OF SPECIFIED NOTIFIABLE DISEASES: UNITED STATES
FOR WEEKS ENDED

JULY 8, 1961 AND JULY 7, 1962

Area	Poliomyelitis, Total Cases				Poliomyelitis, Paralytic				Poliomyelitis, Nonparalytic		Aseptic Meningitis	
	27th week		Cumulative First 27 weeks		27th week		Cumulative First 27 weeks		27th week		27th week	
	1962	1961	1962	1961	1962	1961	1962	1961	1962	1961	1962	1961
UNITED STATES.....	17	10	220	249	12	7	170	162	4	2	51	28
NEW ENGLAND.....	-	-	3	3	-	-	3	3	-	-	1	-
Maine.....	-	-	-	-	-	-	-	-	-	-	-	-
New Hampshire.....	-	-	-	-	-	-	-	-	-	-	-	-
Vermont.....	-	-	-	-	-	-	-	-	-	-	-	-
Massachusetts.....	-	-	2	2	-	-	2	2	-	-	1	-
Rhode Island.....	-	-	-	-	-	-	-	-	-	-	-	-
Connecticut.....	-	-	1	1	-	-	1	1	-	-	-	-
MIDDLE ATLANTIC.....	-	-	32	21	-	-	19	18	-	-	2	1
New York.....	-	-	32	8	-	-	19	6	-	-	1	1
New Jersey.....	-	-	-	10	-	-	-	9	-	-	-	-
Pennsylvania.....	-	-	-	3	-	-	-	3	-	-	1	-
EAST NORTH CENTRAL.....	-	-	10	27	-	-	7	18	-	-	7	1
Ohio.....	-	-	5	11	-	-	5	6	-	-	3	1
Indiana.....	-	-	3	3	-	-	2	2	-	-	-	-
Illinois.....	-	-	1	7	-	-	-	6	-	-	2	-
Michigan.....	-	-	-	3	-	-	-	3	-	-	1	-
Wisconsin.....	-	-	1	3	-	-	-	1	-	-	1	-
WEST NORTH CENTRAL.....	2	1	10	13	1	1	6	7	-	-	-	2
Minnesota.....	1	-	3	3	1	-	3	3	-	-	-	1
Iowa.....	-	-	3	1	-	-	2	-	-	-	-	-
Missouri.....	1	1	4	7	-	1	1	2	-	-	-	1
North Dakota.....	-	-	-	-	-	-	-	-	-	-	-	-
South Dakota.....	-	-	-	-	-	-	-	-	-	-	-	-
Nebraska.....	-	-	-	2	-	-	-	2	-	-	-	-
Kansas.....	-	-	-	-	-	-	-	-	-	-	-	-
SOUTH ATLANTIC.....	1	2	13	38	1	2	10	25	-	-	1	3
Delaware.....	-	-	-	2	-	-	-	1	-	-	-	-
Maryland.....	-	1	-	1	-	1	-	1	-	-	-	-
District of Columbia..	-	-	1	-	-	-	-	-	-	-	-	-
Virginia.....	-	-	2	-	-	-	2	-	-	-	-	1
West Virginia.....	1	1	2	5	1	1	2	3	-	-	-	-
North Carolina.....	-	-	2	4	-	-	1	3	-	-	-	-
South Carolina.....	-	-	1	4	-	-	1	4	-	-	-	2
Georgia.....	-	-	2	14	-	-	2	8	-	-	-	-
Florida.....	-	-	3	8	-	-	2	5	-	-	1	-
EAST SOUTH CENTRAL.....	-	3	7	26	-	1	5	9	-	2	1	5
Kentucky.....	-	-	2	16	-	-	2	2	-	-	-	-
Tennessee.....	-	3	3	5	-	1	1	2	-	2	1	1
Alabama.....	-	-	2	1	-	-	2	1	-	-	-	-
Mississippi.....	-	-	-	4	-	-	-	4	-	-	-	4
WEST SOUTH CENTRAL.....	12	1	112	40	8	1	91	24	4	-	34	2
Arkansas.....	-	-	1	1	-	-	1	-	-	-	-	-
Louisiana.....	-	-	7	11	-	-	6	8	-	-	-	-
Oklahoma.....	-	-	1	-	-	-	-	-	-	-	-	-
Texas.....	12	1	103	28	8	1	84	16	4	-	34	2
MOUNTAIN.....	-	2	8	22	-	1	7	13	-	-	1	2
Montana.....	-	1	3	2	-	1	2	2	-	-	-	-
Idaho.....	-	-	-	4	-	-	-	1	-	-	-	-
Wyoming.....	-	-	1	-	-	-	1	-	-	-	-	-
Colorado.....	-	-	-	3	-	-	-	3	-	-	1	2
New Mexico.....	-	-	-	1	-	-	-	-	-	-	-	-
Arizona.....	-	-	3	5	-	-	3	3	-	-	-	-
Utah.....	-	1	1	7	-	-	1	4	-	-	-	-
Nevada.....	-	-	-	-	-	-	-	-	-	-	-	-
PACIFIC.....	2	1	25	59	2	1	22	45	-	-	4	12
Washington.....	-	-	-	7	-	-	-	7	-	-	-	-
Oregon.....	-	-	2	7	-	-	2	1	-	-	-	-
California.....	2	1	22	43	2	1	19	35	-	-	4	12
Alaska.....	-	-	-	-	-	-	-	-	-	-	-	-
Hawaii.....	-	-	1	2	-	-	1	2	-	-	-	-
Puerto Rico.....	-	-	7	4	-	-	7	4	-	-	-	-

Morbidity and Mortality Weekly Report

213

Table 3. CASES OF SPECIFIED NOTIFIABLE DISEASES: UNITED STATES
FOR WEEKS ENDED
JULY 8, 1961 AND JULY 7, 1962 - (Continued)

Area	Brucellosis		Diphtheria		Encephalitis, Infectious		Hepatitis, Infectious and serum				Measles	
	27th week 1962	Cumulative 27 weeks 1962	27th week 1962	Cumulative 27 weeks 1962	27th week		27th week				27th week	
					1962	1961	Under	20 &	Total	Total	1962	1961
							20 yr.	over				
UNITED STATES.....	8	212	4	223	30	17	299	284	605	1,009	6,559	6,087
NEW ENGLAND.....	-	-	-	1	3	1	15	17	32	24	978	771
Maine.....	-	-	-	-	-	1	8	2	10	-	122	92
New Hampshire.....	-	-	-	-	-	-	-	-	-	1	-	11
Vermont.....	-	-	-	-	-	-	1	1	7	7	98	75
Massachusetts.....	-	-	-	1	1	-	4	5	9	10	580	458
Rhode Island.....	-	-	-	-	2	-	2	2	4	6	49	52
Connecticut.....	-	-	-	-	-	-	1	7	8	-	129	83
MIDDLE ATLANTIC.....	-	4	-	4	6	2	52	40	92	91	1,459	1,530
New York.....	-	1	-	2	4	-	26	17	43	36	904	863
New Jersey.....	-	1	-	1	-	-	11	14	25	28	471	405
Pennsylvania.....	-	2	-	1	2	2	15	9	24	27	84	262
EAST NORTH CENTRAL.....	6	55	-	6	1	-	54	75	132	189	1,475	1,397
Ohio.....	-	-	-	-	-	-	16	31	49	38	168	180
Indiana.....	1	5	-	3	-	-	4	10	14	16	79	30
Illinois.....	3	41	-	-	-	-	5	8	13	23	104	142
Michigan.....	-	3	-	3	-	-	28	24	52	108	636	602
Wisconsin.....	2	6	-	-	1	-	1	2	4	4	488	443
WEST NORTH CENTRAL.....	2	86	3	54	5	1	13	13	30	111	112	204
Minnesota.....	-	5	-	16	-	-	1	5	9	9	11	8
Iowa.....	2	52	-	1	5	-	10	4	14	54	23	100
Missouri.....	-	2	-	5	-	-	1	1	2	21	12	51
North Dakota.....	-	1	-	6	-	-	-	-	-	7	65	38
South Dakota.....	-	4	1	12	-	-	-	-	-	-	-	1
Nebraska.....	-	9	2	13	-	1	-	2	3	18	1	6
Kansas.....	-	13	-	1	-	-	1	1	2	2	NN	NN
SOUTH ATLANTIC.....	-	17	-	40	4	-	43	27	73	216	290	612
Delaware.....	-	-	-	-	-	-	1	-	1	3	26	9
Maryland.....	-	-	-	-	-	-	16	12	28	37	31	41
District of Columbia..	-	-	-	1	-	-	-	1	1	2	2	11
Virginia.....	-	8	-	7	-	-	6	4	12	120	82	285
West Virginia.....	-	-	-	1	-	-	5	2	7	15	94	133
North Carolina.....	-	2	-	4	-	-	13	3	16	11	10	23
South Carolina.....	-	-	-	5	-	-	1	-	2	6	16	37
Georgia.....	-	2	-	4	-	-	-	-	-	-	3	-
Florida.....	-	5	-	18	4	-	1	5	6	22	26	73
EAST SOUTH CENTRAL.....	-	9	-	16	1	2	39	23	62	134	386	347
Kentucky.....	-	-	-	-	-	-	13	6	19	44	80	34
Tennessee.....	-	4	-	7	-	-	14	6	20	36	227	251
Alabama.....	-	4	-	3	-	-	4	7	11	41	42	33
Mississippi.....	-	1	-	6	1	2	8	4	12	13	37	29
WEST SOUTH CENTRAL.....	-	13	1	83	3	2	33	18	51	70	496	232
Arkansas.....	-	1	-	10	2	-	3	1	4	19	5	2
Louisiana.....	-	2	-	7	-	-	7	7	14	8	11	-
Oklahoma.....	-	1	-	5	-	1	-	-	-	2	8	2
Texas.....	-	9	1	61	1	1	23	10	33	41	472	228
MOUNTAIN.....	-	7	-	9	-	-	5	8	21	52	578	341
Montana.....	-	1	-	6	-	-	-	2	2	8	136	64
Idaho.....	-	1	-	1	-	-	-	-	-	1	52	28
Wyoming.....	-	-	-	-	-	-	2	-	2	1	2	1
Colorado.....	-	2	-	-	-	-	-	1	7	12	168	128
New Mexico.....	-	-	-	2	-	-	3	-	3	5	NN	NN
Arizona.....	-	2	-	-	-	-	-	-	1	17	120	102
Utah.....	-	1	-	-	-	-	-	5	5	8	69	14
Nevada.....	-	-	-	-	-	-	-	-	1	-	31	4
PACIFIC.....	-	21	-	10	7	9	45	63	112	122	785	653
Washington.....	-	-	-	-	-	-	6	12	19	15	43	35
Oregon.....	-	1	-	-	-	-	8	6	14	14	247	109
California.....	-	18	-	5	7	9	29	42	74	92	384	497
Alaska.....	-	1	-	5	-	-	2	3	5	1	16	3
Hawaii.....	-	1	-	-	-	-	-	-	-	-	95	9
Puerto Rico.....	-	-	-	27	-	-	13	9	22	25	73	17

Morbidity and Mortality Weekly Report

Table 3. CASES OF SPECIFIED NOTIFIABLE DISEASES: UNITED STATES
FOR WEEKS ENDED

JULY 8, 1961 AND JULY 7, 1962 - (Continued)

Area	Meningococcal Infections		Streptococcal Sore Throat & Scarlet Fever		Tetanus	Tickborne Typhus (Rocky Mt. Spotted)	Tularemia	Typhoid Fever		Rabies in Animals		
	27th wk	Cumulative 27 weeks	27th week		27th wk.	27th wk.	27th wk.	27th wk.	Cumulative 27 weeks	27th week		Cumulative 27 weeks
	1962	1962	1962	1961	1962	1962	1962	1962	1962	1962	1961	1962
UNITED STATES....	27	1,240	3,531	2,767	8	11	5	14	258	70	77	2,226
NEW ENGLAND.....	2	78	207	157	-	-	-	-	3	-	-	-
Maine.....	-	12	4	7	-	-	-	-	1	-	-	-
New Hampshire.....	-	3	-	4	-	-	-	-	-	-	-	-
Vermont.....	-	2	2	13	-	-	-	-	-	-	-	-
Massachusetts.....	-	31	34	38	-	-	-	-	2	-	-	-
Rhode Island.....	-	7	16	22	-	-	-	-	-	-	-	-
Connecticut.....	2	23	151	73	-	-	-	-	-	-	-	-
MIDDLE ATLANTIC....	6	206	114	160	-	-	-	-	28	5	2	64
New York.....	5	97	98	128	-	-	-	-	17	2	2	42
New Jersey.....	-	47	9	22	-	-	-	-	8	-	-	-
Pennsylvania.....	1	62	7	10	-	-	-	-	3	3	-	22
EAST NORTH CENTRAL..	6	245	233	199	-	1	1	2	40	20	10	516
Ohio.....	2	74	20	40	-	-	-	2	22	12	1	271
Indiana.....	-	22	59	34	-	1	1	2	2	5	4	154
Illinois.....	3	47	32	41	-	-	-	-	9	-	5	46
Michigan.....	1	83	66	26	-	-	-	-	4	2	-	24
Wisconsin.....	-	19	56	58	-	-	-	-	3	1	-	21
WEST NORTH CENTRAL..	3	68	72	75	6	-	2	1	9	11	27	574
Minnesota.....	-	12	7	2	-	-	-	-	-	6	1	123
Iowa.....	1	10	26	18	-	-	-	-	1	4	15	236
Missouri.....	-	18	-	5	-	-	1	-	6	-	10	95
North Dakota.....	-	6	32	50	-	-	-	-	-	-	-	43
South Dakota.....	-	2	6	-	-	-	-	1	1	1	-	62
Nebraska.....	2	10	-	-	1	-	-	-	1	-	1	13
Kansas.....	-	10	1	-	5	-	1	-	-	-	-	2
SOUTH ATLANTIC.....	3	205	303	235	-	5	-	4	48	5	6	182
Delaware.....	1	27	1	-	-	-	-	-	1	-	-	-
Maryland.....	-	10	10	2	-	-	-	1	3	-	-	1
Dist. of Columbia..	-	7	-	1	-	-	-	-	4	-	-	-
Virginia.....	1	44	83	65	-	3	-	1	9	2	3	82
West Virginia.....	-	12	72	42	-	-	-	-	2	3	3	65
North Carolina.....	-	50	4	-	-	2	-	-	2	-	-	-
South Carolina.....	-	12	32	21	-	-	-	-	4	-	-	-
Georgia.....	-	7	23	-	-	-	-	1	15	-	-	5
Florida.....	1	36	78	104	-	-	-	1	8	-	-	29
EAST SOUTH CENTRAL..	-	80	753	586	-	3	-	1	21	9	4	261
Kentucky.....	-	19	34	44	-	-	-	1	4	6	1	89
Tennessee.....	-	34	630	473	-	3	-	-	10	3	3	156
Alabama.....	-	17	4	26	-	-	-	-	7	-	-	16
Mississippi.....	-	10	85	43	-	-	-	-	-	-	-	-
WEST SOUTH CENTRAL..	1	109	456	495	2	1	1	2	67	10	22	451
Arkansas.....	-	11	-	1	1	-	1	1	8	1	7	54
Louisiana.....	-	52	1	3	-	-	-	-	18	-	-	14
Oklahoma.....	-	5	4	1	1	1	-	-	4	1	-	20
Texas.....	1	41	451	490	-	-	-	1	37	8	15	363
MOUNTAIN.....	1	40	726	606	-	1	-	-	22	-	1	20
Montana.....	-	3	26	137	-	-	-	-	10	-	-	-
Idaho.....	-	3	63	62	-	-	-	-	-	-	-	-
Wyoming.....	-	3	6	-	-	1	-	-	3	-	-	-
Colorado.....	-	8	251	255	-	-	-	-	1	-	-	-
New Mexico.....	-	3	209	-	-	-	-	-	6	-	1	10
Arizona.....	-	9	111	109	-	-	-	-	2	-	-	10
Utah.....	-	6	59	39	-	-	-	-	-	-	-	-
Nevada.....	1	5	1	4	-	-	-	-	-	-	-	-
PACIFIC.....	5	209	667	254	-	-	1	4	20	10	5	158
Washington.....	-	18	63	36	-	-	-	-	1	-	-	-
Oregon.....	-	15	9	20	-	-	-	-	-	1	-	6
California.....	5	167	568	197	-	-	1	4	19	9	5	152
Alaska.....	-	5	7	1	-	-	-	-	-	-	-	-
Hawaii.....	-	4	20	-	-	-	-	-	-	-	-	-
Puerto Rico.....	-	7	-	11	-	-	-	1	4	-	1	11

Morbidity and Mortality Weekly Report

215

Table 4 (C). TOTAL DEATHS UNDER 1 YEAR OF AGE IN REPORTING CITIES

(Tables 4(A), 4(B), 4(C), and 4(D) will be published in sequence covering a four-week period.^o)

Area	For weeks ending				Area	For weeks ending			
	6/16	6/23	6/30	7/7		6/16	6/23	6/30	7/7
NEW ENGLAND:					SOUTH ATLANTIC:				
Boston, Mass.....	13	17	10	14	Atlanta, Ga.....	6	14	6	6
Bridgeport, Conn.....	2	5	2	0	Baltimore, Md.....	16	15	19	8
Cambridge, Mass.....	1	2	1	1	Charlotte, N.C.....	3	5	3	7
Fall River, Mass.....	2	1	2	1	Jacksonville, Fla.....	8	2	9	6
Hartford, Conn.....	5	7	3	2	Miami, Fla.....	2	0	5	4
Lowell, Mass.....	3	0	4	2*	Norfolk, Va.....	2	3	8	3
Lynn, Mass.....	0	1	0	3	Richmond, Va.....	5	6	9	2
New Bedford, Mass.....	1	2	1	1	Savannah, Ga.....	0	5	5	3
New Haven, Conn.....	0	3	3	5	St. Petersburg, Fla.....	7	1	0	2
Providence, R.I.....	4	4	2	7	Tampa, Fla.....	7	4	3	4
Somerville, Mass.....	0	0	0	0	Washington, D.C.....	39	7	22	20
Springfield, Mass.....	2	1	1	3	Wilmington, Del.....	2	2	0	4
Waterbury, Conn.....	2	4	2	0	EAST SOUTH CENTRAL:				
Worcester, Mass.....	1	5	3	3	Birmingham, Ala.....	3	6	3	4
MIDDLE ATLANTIC:					Chattanooga, Tenn.....	0	3	5	3*
Albany, N.Y.....	5	6	4	1	Knoxville, Tenn.....	2	5	3	1
Allentown, Pa.....	2	3	4	1	Louisville, Ky.....	1	19	8	10
Buffalo, N.Y.....	10	7	7	8	Memphis, Tenn.....	18	4	15	3
Camden, N.J.....	2	2	4	2	Mobile, Ala.....	2	8	6	7
Elizabeth, N.J.....	4	0	2	4	Montgomery, Ala.....	2	2	1	5
Erie, Pa.....	4	1	4	3	Nashville, Tenn.....	4	6	4	5
Jersey City, N.J.....	4	5	3	4	WEST SOUTH CENTRAL:				
Newark, N.J.....	8	11	8	25	Austin, Tex.....	4	6	1	4
New York City, N.Y.....	94	101	77	77	Baton Rouge, La.....	0	5	6	3
Paterson, N.J.....	4	1	4	7	Corpus Christi, Tex.....	5	2	8	3
Philadelphia, Pa.....	56	28	34	40	Dallas, Tex.....	9	2	12	12
Pittsburgh, Pa.....	9	0	24	8	El Paso, Tex.....	3	7	7	5
Reading, Pa.....	0	0	0	0	Fort Worth, Tex.....	7	5	9	9
Rochester, N.Y.....	5	3	8	3	Houston, Tex.....	19	15	19	11
Schenectady, N.Y.....	0	0	0	5	Little Rock, Ark.....	2	1	13	0
Scranton, Pa.....	0	1	1	0	New Orleans, La.....	17	10	18	23
Syracuse, N.Y.....	3	5	5	5	Oklahoma City, Okla.....	6	10	4	2
Trenton, N.J.....	0	2	2	5	San Antonio, Tex.....	7	13	8	11
Utica, N.Y.....	0	1	4	1	Shreveport, La.....	8	10	3	3
Yonkers, N.Y.....	0	2	1	2	Tulsa, Okla.....	3	4	1	4
EAST NORTH CENTRAL:					MOUNTAIN:				
Akron, Ohio.....	2	4	4	2	Albuquerque, N. Mex.....	9	5	5	4
Canton, Ohio.....	5	2	2	4	Colorado Springs, Colo...	2	2	0	0
Chicago, Ill.....	39	65	49	46	Denver, Colo.....	11	4	15	6
Cincinnati, Ohio.....	9	5	11	9	Ogden, Utah.....	0	0	4	0
Cleveland, Ohio.....	13	19	10	15	Phoenix, Ariz.....	4	8	6	4
Columbus, Ohio.....	12	12	13	9	Pueblo, Colo.....	2	1	2	2
Dayton, Ohio.....	14	5	5	5	Salt Lake City, Utah.....	4	3	5	3
Detroit, Mich.....	21	32	35	15	Tucson, Ariz.....	5	3	8	0
Evansville, Ind.....	1	2	4	5	PACIFIC:				
Flint, Mich.....	5	4	7	3	Berkeley, Calif.....	3	1	0	0
Fort Wayne, Ind.....	2	5	3	6	Fresno, Calif.....	5	3	3	4
Gary, Ind.....	5	1	4	3*	Glendale, Calif.....	0	1	0	2
Grand Rapids, Mich.....	3	2	0	4	Honolulu, Hawaii.....	6	7	6	5*
Indianapolis, Ind.....	7	11	11	10	Long Beach, Calif.....	4	5	3	6
Madison, Wis.....	1	3	8	0	Los Angeles, Calif.....	27	28	26	30
Milwaukee, Wis.....	10	0	9	7	Oakland, Calif.....	5	7	7	6
Peoria, Ill.....	1	2	0	3	Pasadena, Calif.....	1	0	3	0
Rockford, Ill.....	0	3	0	2	Portland, Oreg.....	4	6	4	6
South Bend, Ind.....	4	5	2	0	Sacramento, Calif.....	4	4	10	3
Toledo, Ohio.....	8	3	1	4	San Diego, Calif.....	8	6	8	10
Youngstown, Ohio.....	6	2	1	1	San Francisco, Calif.....	8	8	12	6
WEST NORTH CENTRAL:					San Jose, Calif.....	3	4	4	2
Des Moines, Iowa.....	1	4	2	4	Seattle, Wash.....	12	6	5	4
Duluth, Minn.....	4	1	4	1	Spokane, Wash.....	5	2	4	3
Kansas City, Kans.....	1	5	3	0	Tacoma, Wash.....	1	1	3	3
Kansas City, Mo.....	4	9	6	4	San Juan, P.R.....				
Lincoln, Nebr.....	0	2	1	0	0	0	0	0	
Minneapolis, Minn.....	8	6	9	10	Current Week Mortality for 108 Selected Cities				
Omaha, Nebr.....	2	5	3	9	4(A) Total Mortality, all ages.....	10,073			
St. Louis, Mo.....	11	14	13	16	4(B) Pneumonia-Influenza Deaths, all ages.....	353			
St. Paul, Minn.....	5	2	5	3	4(C) Total Deaths under 1 Year of Age.....	723			
Wichita, Kans.....	2	2	5	4	4(D) Total Deaths, Persons 65 years and over.....	5,510			

*Estimate - based on average percent of divisional total Totals for previous weeks include reported corrections.

NOTE: All deaths by place of occurrence.

EPIDEMIOLOGICAL REPORTS

Nicotine Poisoning - California

Approximately one hour after eating supper on June 7, a man and wife and their two children became nauseated and dizzy, vomited, and developed difficulty in swallowing, talking, and seeing. One child, age 7 years, died within 12 hours after eating. The symptomatology in the other members of the family lasted approximately 24 hours. One of the items for supper included plants mistakenly picked as collard greens in the yard of a vacant house. These plants had been washed, boiled with strips of bacon, and served for supper. Some greens were given to a sister who took them to her house, tasted them, decided they needed more cooking, and cooked them about 30 minutes longer before eating. The collard greens were identified as the wild tobacco plant *nicotiana glauca*, and consumption of the plant undoubtedly led to acute, severe nicotine poisoning.

(Reported by F. X. Kemp, Chief, Food & Drug Section, H. Meehan, M.D., and John F. Haun, M.D., Los Angeles County Health Department.)

Listeria monocytogenes - Minnesota

The 5th Minnesota case in 10 years of *Listeria monocytogenes* was recently reported from Duluth. The chief engineer of a Greek ship became ill one day prior to arrival in port. He had received penicillin by injection upon radio instructions. The patient was found to be irritable and non-responsive. An electrocardiogram disclosed a heart block. A spinal tap revealed a purulent exudate which yielded *Listeria monocytogenes*. The patient went into a deep coma with a fever of 105° F. Antibiotics were given; the fever fell to 100° F. Generalized convulsions were controlled with sodium amytal. On May 19, the 7th day of illness, the patient died. All 33 crew members were cultured. The organism was not isolated from any of the crew.

Previous cases of human Listeriosis in Minnesota over the past 10 years are as follows:

- 1954 - 17 month old male, recovered
- 1957 - 61 year old female, died of malignant pancreatic neoplasm, complicating meningitis
- 1958 - 84 year old female, outcome unknown
- 1959 - 55 year old male, outcome unknown

All were diagnosed by the isolation of the characteristic gram positive rod.

(Reported by Dr. D. S. Fleming, Director, Division of Disease Prevention and Control, Minnesota Department of Health, Minneapolis, Minn.)

INTERNATIONAL NOTES - QUARANTINE MEASURES

No report.

Notes: These provisional data are based on weekly telegrams to the Communicable Disease Center by the individual State health departments.

Symbols: --- Data not available
Quantity zero

Procedures for construction of various mortality curves may be obtained from Statistics Section, Communicable Disease Center, Public Health Service, U. S. Department of Health, Education, and Welfare, Atlanta 22, Georgia.

Library
81
7 61
CDC

U. S. DEPARTMENT OF
HEALTH, EDUCATION, AND WELFARE
PUBLIC HEALTH SERVICE
Communicable Disease Center
Atlanta 22, Georgia
Official Business



POSTAGE AND FEES PAID
U. S. DEPARTMENT OF H. E. W.