



Dengue Surveillance Weekly Report

CDC Dengue Branch & Puerto Rico Department of Health



Data through August 19, 2015

July 23 29, 2015 (Week 30)

Summary¹

Week 30

16 suspected cases reported

This level of reporting is BELOW the historical average.²

Week 29

19 suspected cases reported

1 (5.3%) confirmed in the laboratory³

1 (1%) municipios** had confirmed cases

Serotypes

In the last 8 weeks:

- 67% DENV-4
- 33% DENV-2
- 0% DENV-3
- 0% DENV-1

Accumulated in 2015

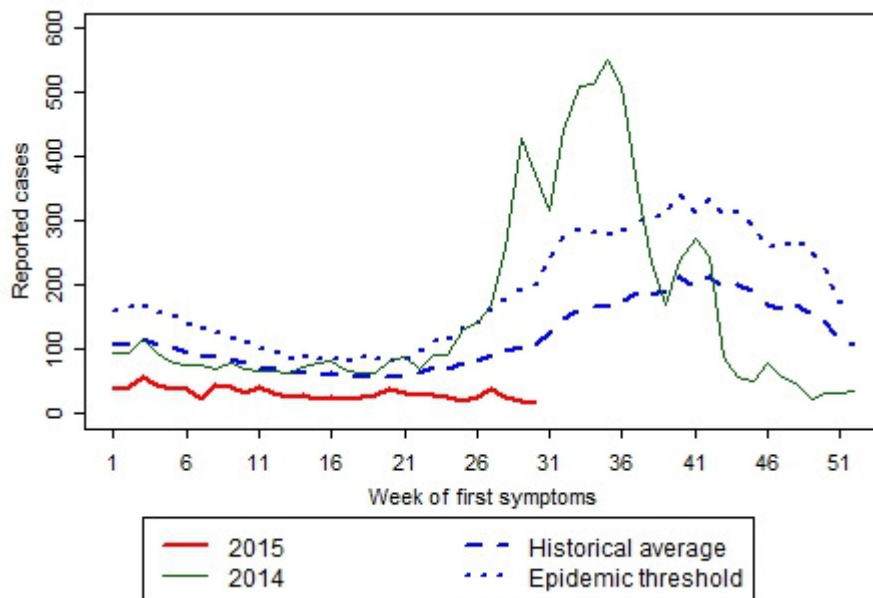
1029 suspected cases reported

27 (3%) confirmed in the laboratory³

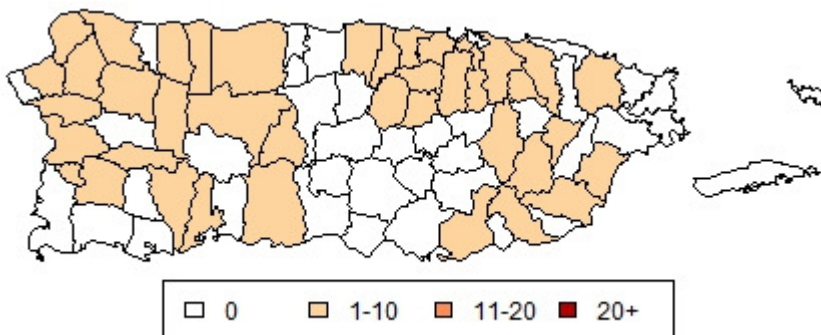
0 confirmed cases of dengue hemorrhagic fever (DHF)

0 confirmed fatal cases pending review

Suspected cases reported for 2015 compared to the historical average²



Municipios with suspected cases in weeks 27-30**



¹The numbers reported in the Summary reflect all data from regular and enhanced surveillance.

²The historical average represents the years 1986 - 2014. The threshold level is the 75th percentile of the distribution of cases in the same years. Data from the areas involved in an enhanced surveillance project are not included*. For this reason, the total number of reported cases in the figure may differ from the number reported in the Summary.

³In this report laboratory confirmation refers to a positive IgM or PCR test.

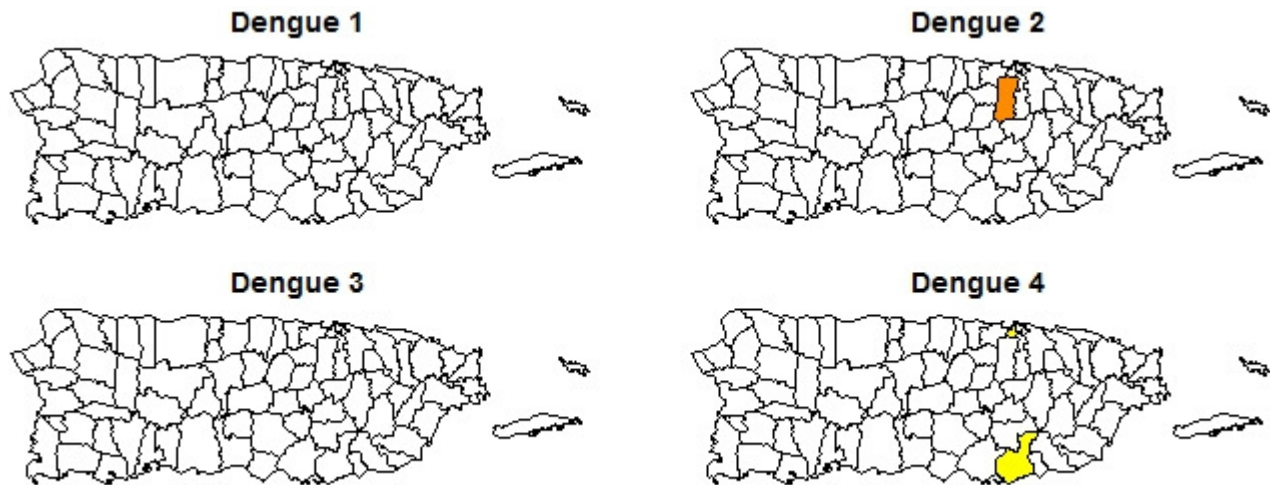
*Reported cases from the municipios of Arroyo, Guayama, Maunabo, Patillas, and Salinas may be higher due to their involvement in an enhanced surveillance project.

** Municipios are administrative units roughly equivalent to counties.

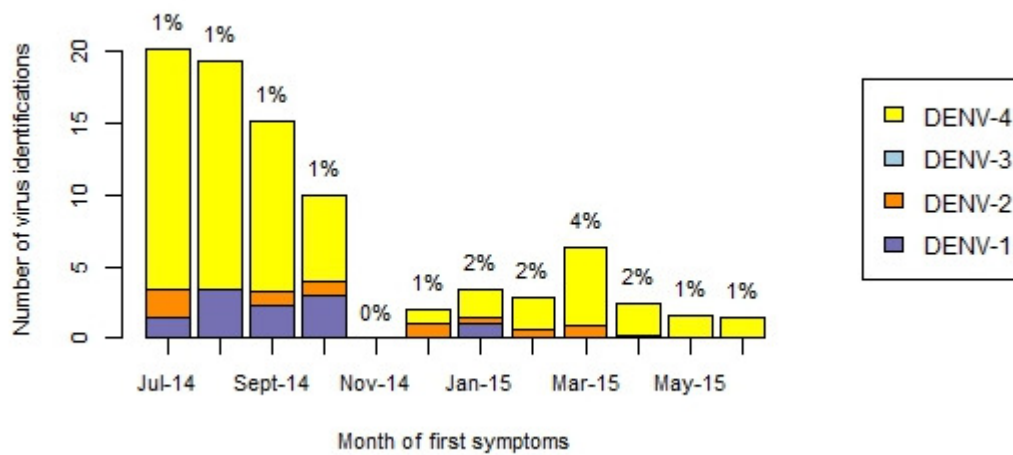
Municipios with laboratory confirmed cases in the weeks 26-29³



Confirmations of virus serotype in the last eight weeks by municipio



Total viral identifications in the last 12 months⁴



⁴The percentage is the proportion of reported cases with confirmation of serotype.