

Supporting Information

Environmental Science & Technology

Analysis of Japanese Radionuclide Monitoring Data of Food Before and After the Fukushima Nuclear Accident

Stefan Merz^a, Katsumi Shozugawa^{b*}, Georg Steinhauser^{c*}

^a Vienna University of Technology, Atominstitut, Stadionallee 2, 1020 Vienna, Austria

^b Graduate School of Arts and Sciences, The University of Tokyo, Meguro-ku, Tokyo, Japan

^c Colorado State University, Environmental and Radiological Health Sciences, Fort Collins, CO 80523,
United States

* Corresponding authors.

K. Shozugawa: Phone: +91 3 5454 6566. E-mail: cshozu@mail.ecc.u-tokyo.ac.jp

G. Steinhauser: Phone: +1 970 491 0219. E-mail: georg.steinhauser@colostate.edu,
georg.steinhauser@ati.ac.at

Table S2: Number of food samples measured per prefecture as well as number of samples exceeding the provisional regulatory limits or the new regulatory limits (after 1 April 2012). See ³⁰ for a summary of the regulatory limits. Data taken from ¹⁸.

Prefecture	11 March 2011 until 31 March 2012			1 April 2012 until 31 March 2013			1 April 2013 until 31 March 2014			1 April 2014 until 31 August 2014		
	No. of samples measured	No. of samples exceeding limits	Percentage of samples exceeding limits	No. of samples measured	No. of samples exceeding limits	Percentage of samples exceeding limits	No. of samples measured	No. of samples exceeding limits	Percentage of samples exceeding limits	No. of samples measured	No. of samples exceeding limits	Percentage of samples exceeding limits
Aichi	193	0	0.0%	405	0	0.0%	1535	0	0.0%	563	0	0.0%
Akita	1942	2	0.1%	4312	0	0.0%	4337	1	0.0%	2081	2	0.1%
Aomori	1438	0	0.0%	5923	5	0.1%	8542	1	0.0%	3390	0	0.0%
Chiba	3529	32	0.9%	8423	40	0.5%	8871	17	0.2%	3732	3	0.1%
Ehime	143	0	0.0%	298	0	0.0%	290	0	0.0%	103	0	0.0%
Fukuoka	7	0	0.0%	83	0	0.0%	169	0	0.0%	35	0	0.0%
Fukui	203	0	0.0%	77	0	0.0%	63	0	0.0%	23	0	0.0%
Fukushima	21549	718	3.3%	34857	1377	4.0%	40759	608	1.5%	17734	105	0.6%
Gifu	251	0	0.0%	473	0	0.0%	555	0	0.0%	220	0	0.0%
Gunma	12114	26	0.2%	24099	115	0.5%	26875	108	0.4%	11820	23	0.2%
Hiroshima	33	0	0.0%	120	1	0.8%	212	0	0.0%	117	0	0.0%
Hokkaido	2163	0	0.0%	13314	0	0.0%	24817	0	0.0%	11629	0	0.0%
Hyogo	507	0	0.0%	1039	0	0.0%	757	0	0.0%	314	0	0.0%
Ibaraki	13450	86	0.6%	24671	107	0.4%	26468	15	0.1%	11157	3	0.0%

Iwate	9272	32	0.3%	25276	260	1.0%	26424	15	0.1%	11500	3	0.0%
Ishikawa	151	0	0.0%	67	0	0.0%	20	0	0.0%	12	0	0.0%
Kagawa	210	0	0.0%	105	0	0.0%	108	0	0.0%	81	0	0.0%
Kagoshima	1246	0	0.0%	3806	0	0.0%	5869	0	0.0%	2118	0	0.0%
Kanagawa	1058	21	2.0%	2119	2	0.1%	2430	0	0.0%	935	0	0.0%
Kochi	63	0	0.0%	165	0	0.0%	158	0	0.0%	58	0	0.0%
Kumamoto	89	0	0.0%	409	0	0.0%	507	0	0.0%	212	0	0.0%
Kyoto	1083	0	0.0%	2769	0	0.0%	2019	0	0.0%	713	0	0.0%
Mie	173	0	0.0%	1263	0	0.0%	2539	0	0.0%	1141	0	0.0%
Miyagi	14963	64	0.4%	29267	164	0.6%	38834	81	0.2%	14119	32	0.2%
Miyazaki	205	0	0.0%	948	0	0.0%	1026	0	0.0%	408	0	0.0%
Nagano	7230	1	0.0%	11345	12	0.1%	11161	17	0.2%	4352	11	0.3%
Nagasaki	165	0	0.0%	623	0	0.0%	1274	0	0.0%	254	0	0.0%
Nara	23	0	0.0%	131	0	0.0%	171	0	0.0%	57	0	0.0%
Niigata	2294	0	0.0%	4790	3	0.1%	5919	1	0.0%	2379	3	0.1%
Oita	8	0	0.0%	57	0	0.0%	86	0	0.0%	92	0	0.0%
Okayama	165	0	0.0%	612	0	0.0%	928	0	0.0%	425	0	0.0%
Okinawa	13	0	0.0%	24	0	0.0%	24	0	0.0%	9	0	0.0%
Osaka	33	0	0.0%	126	0	0.0%	94	0	0.0%	59	0	0.0%
Saga	160	0	0.0%	1062	0	0.0%	1759	0	0.0%	713	0	0.0%
Saitama	3489	127	3.6%	5006	13	0.3%	5713	6	0.1%	2172	0	0.0%
Shiga	1596	0	0.0%	286	0	0.0%	492	0	0.0%	207	0	0.0%
Shimane	2531	0	0.0%	5214	0	0.0%	5817	0	0.0%	2547	0	0.0%

Shizuoka	1662	10	0.6%	1662	4	0.2%	2129	6	0.3%	868	0	0.0%
Tochigi	12197	75	0.6%	30675	256	0.8%	31100	82	0.3%	13329	18	0.1%
Tokushima	131	0	0.0%	406	0	0.0%	481	0	0.0%	444	0	0.0%
Tokyo	494	7	1.4%	710	3	0.4%	1111	0	0.0%	544	0	0.0%
Tottori	3926	0	0.0%	3077	0	0.0%	1057	0	0.0%	414	0	0.0%
Toyama	180	0	0.0%	221	0	0.0%	203	0	0.0%	81	0	0.0%
Wakayama	98	0	0.0%	482	0	0.0%	528	0	0.0%	220	0	0.0%
Yamagata	12605	3	0.0%	17777	2	0.0%	19520	3	0.0%	7679	1	0.0%
Yamaguchi	6	0	0.0%	80	0	0.0%	262	0	0.0%	156	0	0.0%
Yamanashi	360	0	0.0%	797	7	0.9%	1125	13	1.2%	373	0	0.0%
Others	1636	0	0.0%	8824	1	0.0%	11444	1	0.0%	4152	1	0.0%
Subtotal	137037	1204	0.9%	278275	2372	0.9%	326582	975	0.3%	135741	205	0.2%
Total (2011-2014)	877635	4756	0.5%									

Figure S1.

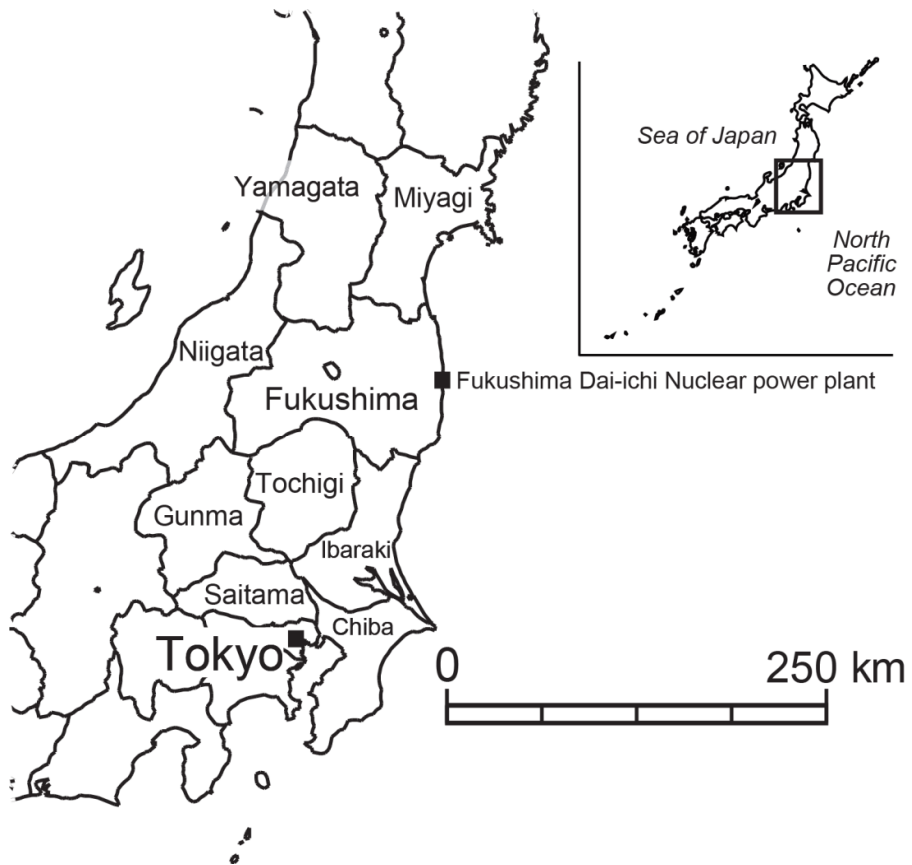


Fig. S1. Location of the Fukushima Daiichi Nuclear Power Plant in Fukushima prefecture and other prefectures affected by the 2011 nuclear accident.

Figure S2.

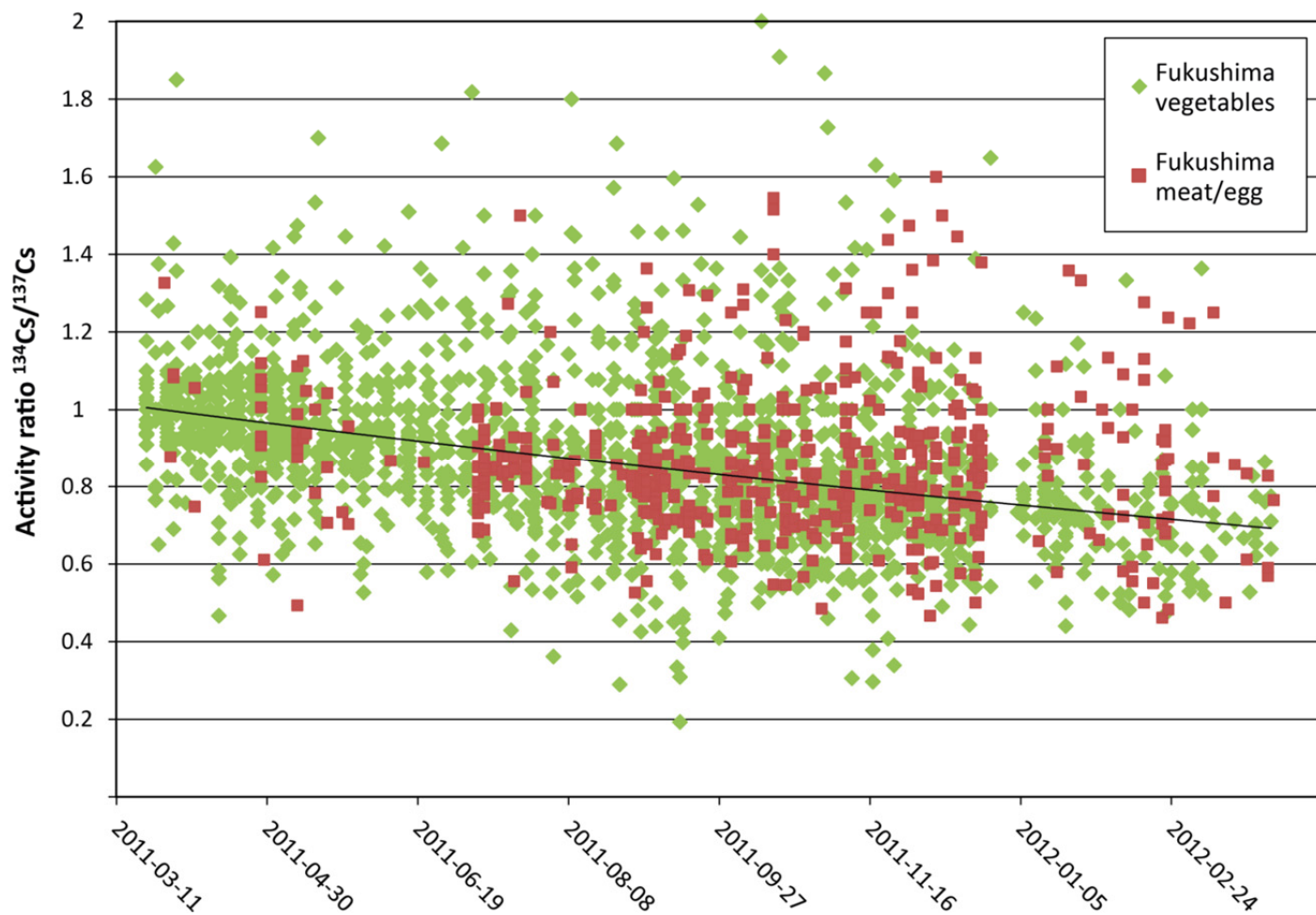


Fig. S2. Activity ratios of $^{134}\text{Cs}/^{137}\text{Cs}$ in food from Fukushima prefecture sampled over the period of the first year after the Fukushima nuclear accident.