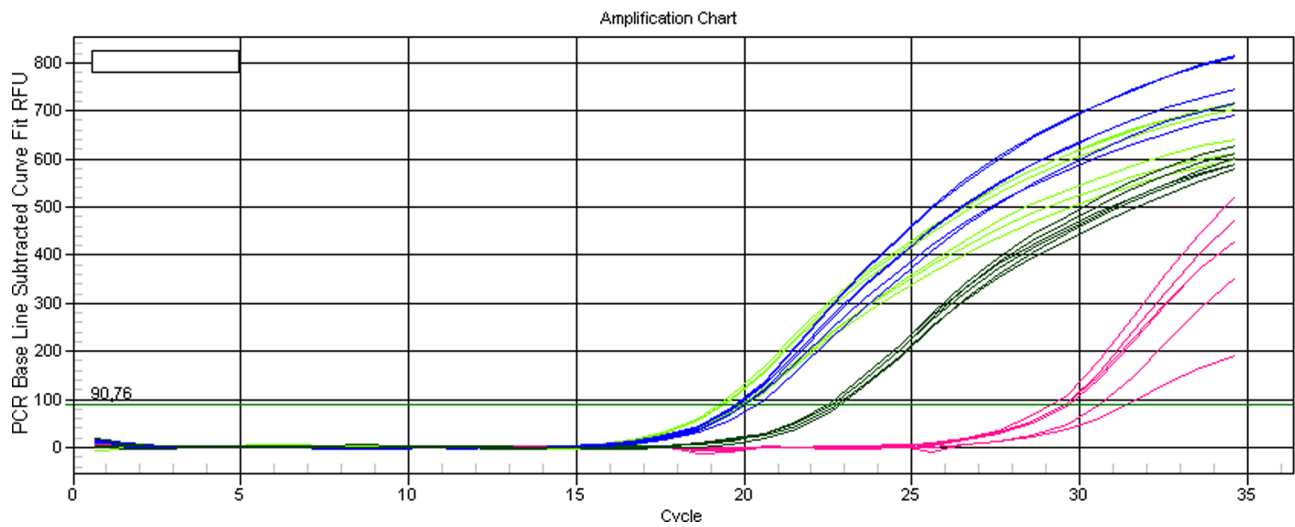


SUPPLEMENTARY FIGURE



Supplementary Figure 1: Amplification plot of Alu sequences using as template genomic DNA extracted fom lungs of treated mice ($N = 5$ per group). Vehicle, blue curves (mean CT 19,99); CP, green curves (mean CT 19,70); Bevacizumab, dark green curves (mean CT 22,68) and iVR1, pink curves (mean CT 30,05). Each amplification was carried out in duplicate.