



# Dengue Surveillance Weekly Report

CDC Dengue Branch & Puerto Rico Department of Health



Data through June 3, 2015

May 7 13, 2015 (Week 19)

## Summary<sup>1</sup>

### Week 19

20 suspected cases reported

This level of reporting is BELOW the historical average.<sup>2</sup>

### Week 18

19 suspected cases reported

0 (0%) confirmed in the laboratory<sup>3</sup>

0 (0%) municipios\*\* had confirmed cases

### Serotypes

In the last 8 weeks:

- 86% DENV-4
- 14% DENV-2
- 0% DENV-3
- 0% DENV-1

### Accumulated in 2015

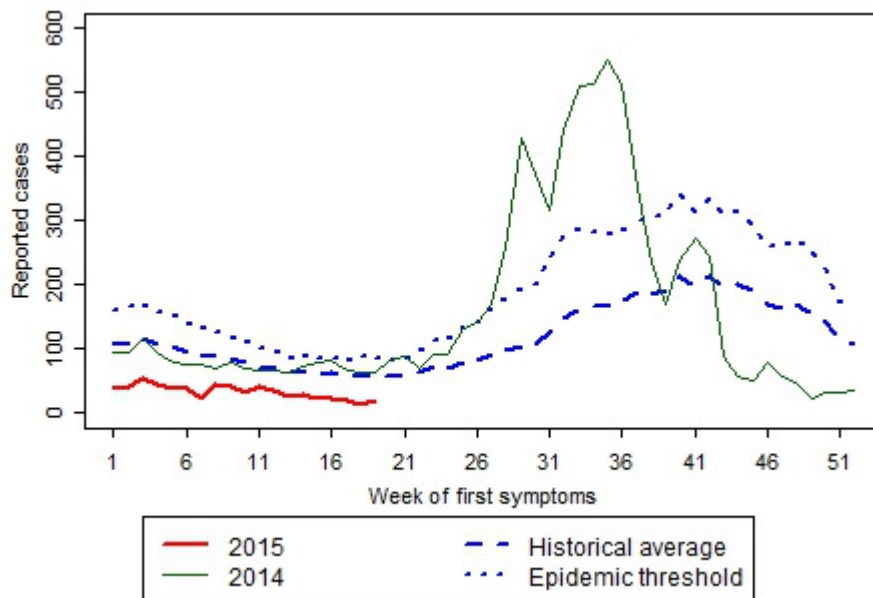
689 suspected cases reported

22 (3%) confirmed in the laboratory<sup>3</sup>

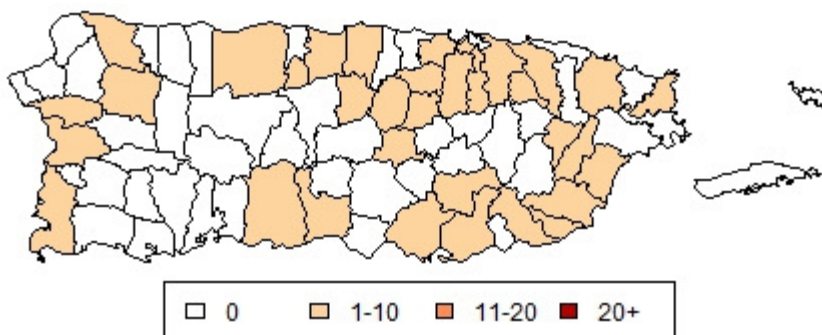
0 confirmed cases of dengue hemorrhagic fever (DHF)

0 confirmed fatal cases pending review

**Suspected cases reported for 2015 compared to the historical average<sup>2</sup>**



**Municipios\*\* with suspected cases in weeks 16-19**



<sup>1</sup>The numbers reported in the Summary reflect all data from regular and enhanced surveillance.

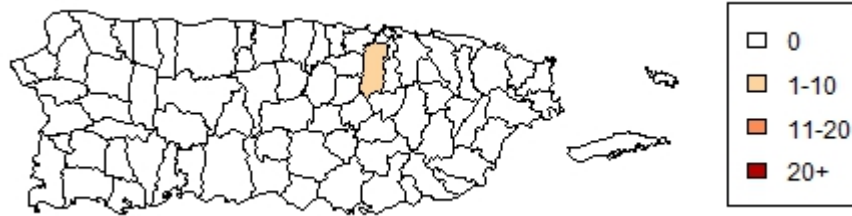
<sup>2</sup>The historical average represents the years 1986 - 2014. The threshold level is the 75th percentile of the distribution of cases in the same years. Data from the areas involved in an enhanced surveillance project are not included\*. For this reason, the total number of reported cases in the figure may differ from the number reported in the Summary.

<sup>3</sup>In this report laboratory confirmation refers to a positive IgM or PCR test.

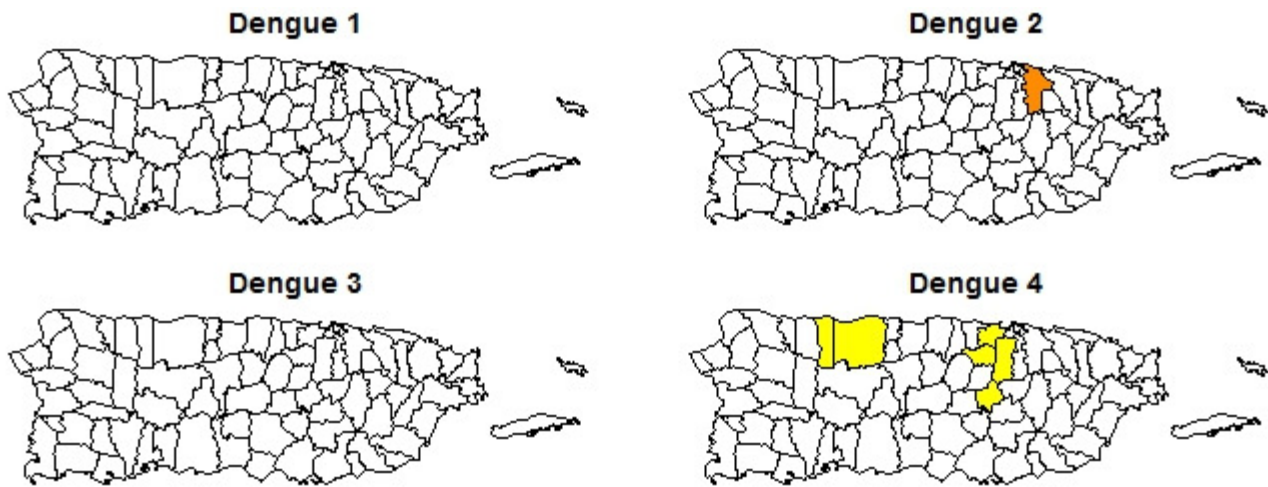
\*Reported cases from the municipios of Arroyo, Guayama, Maunabo, Patillas, and Salinas may be higher due to their involvement in an enhanced surveillance project.

\*\* Municipios are administrative units roughly equivalent to counties.

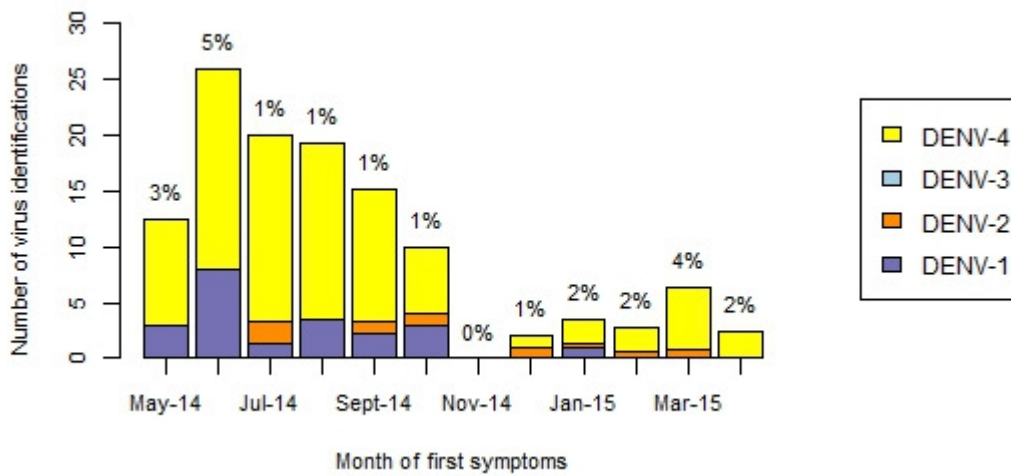
**Municipios with laboratory confirmed cases in the weeks 15-18<sup>3</sup>**



**Confirmations of virus serotype in the last eight weeks by municipio**



**Total viral identifications in the last 12 months<sup>4</sup>**



<sup>4</sup>The percentage is the proportion of reported cases with confirmation of serotype.