

2013-2014 Influenza Season Week 15 ending April 12, 2014

All data are preliminary and may change as more reports are received.

Synopsis: During week 15 (April 6-12, 2014), influenza activity continued to decrease in most regions of the United States.

- **Viral Surveillance:** Of 4,653 specimens tested and reported during week 15 by U.S. World Health Organization (WHO) and National Respiratory and Enteric Virus Surveillance System (NREVSS) collaborating laboratories, 675 (14.5%) were positive for influenza.
- **Pneumonia and Influenza Mortality:** The proportion of deaths attributed to pneumonia and influenza (P&I) was below the epidemic threshold.
- **Influenza-associated Pediatric Deaths:** One influenza-associated pediatric death was reported.
- **Influenza-associated Hospitalizations:** A season-cumulative rate of 33.2 laboratory-confirmed influenza-associated hospitalizations per 100,000 population was reported.
- **Outpatient Illness Surveillance:** The proportion of outpatient visits for influenza-like illness (ILI) was 1.5%, which is below the national baseline of 2.0%. Two of 10 regions reported ILI at or above region-specific baseline levels. Three states and New York City experienced moderate ILI activity; four states experienced low ILI activity; 43 states experienced minimal ILI activity, and the District of Columbia had insufficient data.
- **Geographic Spread of Influenza:** The geographic spread of influenza in six states was reported as widespread; Guam and four states reported regional influenza activity; the District of Columbia, Puerto Rico and 14 states reported local influenza activity; 24 states reported sporadic influenza activity; the U.S. Virgin Islands and two states reported no influenza activity.

National and Regional Summary of Select Surveillance Components

HHS Surveillance Regions*	Data for current week			Data cumulative since September 29, 2013 (Week 40)				
	Out-patient ILI†	% positive for flu‡	Number of jurisdictions reporting regional or widespread activity§	2009 H1N1	A (H3)	A (Subtyping not performed)	B	Pediatric Deaths
Nation	Normal	14.5%	11 of 54	28,109	2,139	14,413	4,329	86
Region 1	Elevated	26.9%	5 of 6	1,647	490	461	254	3
Region 2	Elevated	24.1%	2 of 4	1,863	304	1,121	850	5
Region 3	Normal	22.3%	2 of 6	4,553	232	450	439	7
Region 4	Normal	11.2%	0 of 8	2,032	43	4,962	1,080	19
Region 5	Normal	11.2%	0 of 6	3,210	116	606	140	6
Region 6	Normal	10.4%	1 of 5	3,167	247	4,201	881	29
Region 7	Normal	4.6%	0 of 4	1,328	68	51	41	4
Region 8	Normal	5.7%	0 of 6	4,624	141	1,304	200	2
Region 9	Normal	3.4%	1 of 5	3,331	367	1,120	351	10
Region 10	Normal	4.5%	0 of 4	2,354	131	137	93	1

* <http://www.hhs.gov/about/regionmap.html>

† Elevated means the % of visits for ILI is at or above the national or region-specific baseline.

‡ National data are for current week; regional data are for the most recent three weeks.

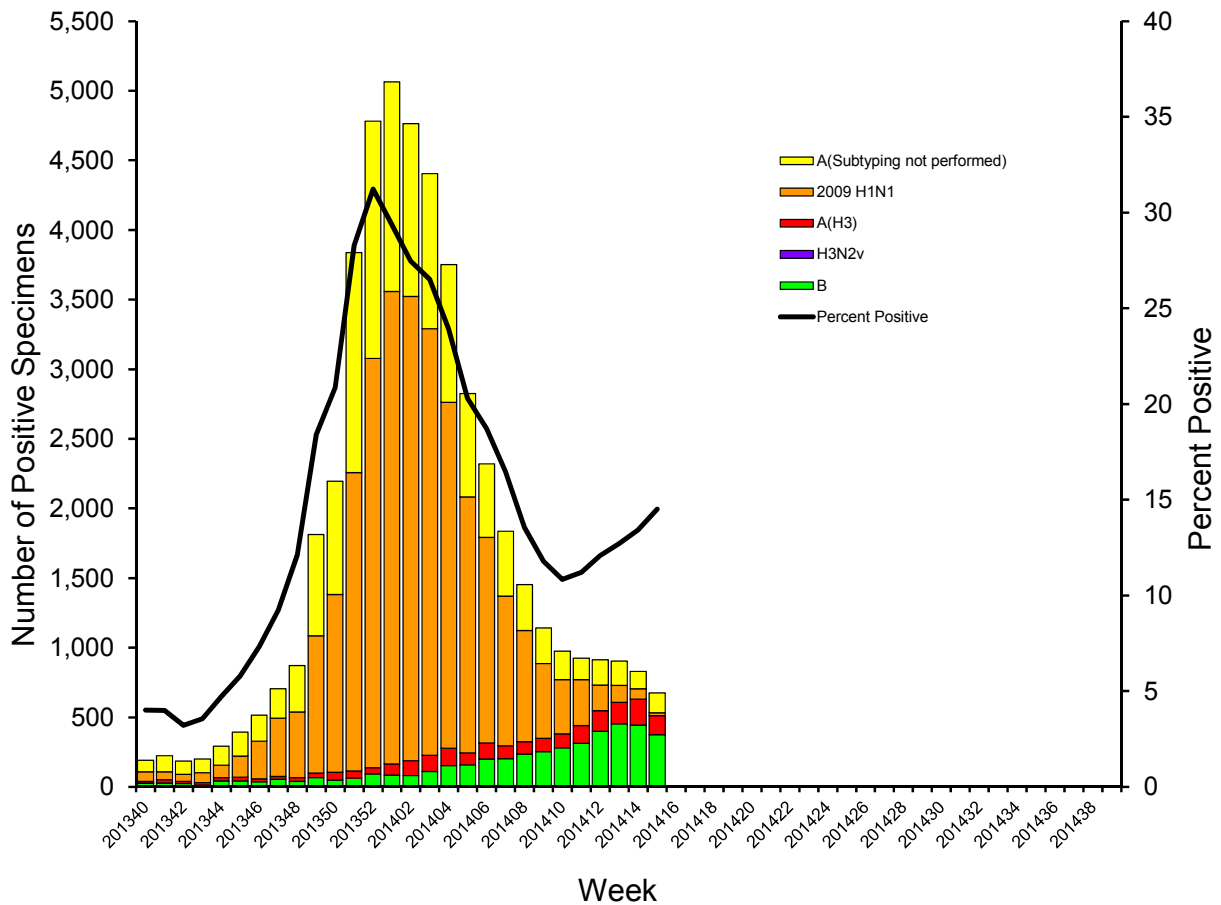
§ Includes all 50 states, the District of Columbia, Guam, Puerto Rico, and the U.S. Virgin Islands.

U.S. Virologic Surveillance: WHO and NREVSS collaborating laboratories located in all 50 states, Puerto Rico, and Washington D.C. report to CDC the number of respiratory specimens tested for influenza and the number positive by influenza virus type and influenza A virus subtype. The results of tests performed during the current week are summarized in the table below.

Region specific data is available at <http://gis.cdc.gov/grasp/fluview/fluportaldashboard.html>.

	Week 15
No. of specimens tested	4,653
No. of positive specimens (%)	675 (14.5%)
Positive specimens by type/subtype	
Influenza A	301 (44.6%)
2009 H1N1	20 (6.6%)
H3	138 (45.8%)
Subtyping not performed	143 (47.5%)
Influenza B	374 (55.4%)

Influenza Positive Tests Reported to CDC by U.S. WHO/NREVSS Collaborating Laboratories, National Summary, 2013-14 Season



Antigenic Characterization*: CDC has antigenically characterized 2,309 influenza viruses [1,755 2009 H1N1 viruses, 307 influenza A (H3N2) viruses, and 247 influenza B viruses] collected by U.S. laboratories since October 1, 2013 by hemagglutination inhibition (HI).

- **2009 H1N1 [1,755]:** 1,752 (99.8%) of 1,755 2009 H1N1 viruses tested were characterized as A/California/7/2009-like, the influenza A (H1N1) component of the 2013-2014 Northern Hemisphere influenza vaccine. Three (0.2%) viruses showed reduced titers with antiserum produced against A/California/7/2009.
- **Influenza A (H3N2) [307]:** 301 (98.0%) of the 307 influenza A (H3N2) viruses tested have been characterized as A/Texas/50/2012-like, the influenza A (H3N2) component of the 2013-2014 Northern Hemisphere influenza vaccine. Six (2.0%) viruses showed reduced titers with antiserum produced against A/Texas/50/2012.
- **Influenza B [247]:** 172 (69.6%) of the 247 influenza B viruses tested belong to B/Yamagata/16/88-lineage and the remaining 75 (30.4%) influenza B viruses tested belong to B/Victoria/02/87 lineage.
 - **Yamagata Lineage [172]:** 172 influenza B/Yamagata-lineage viruses were characterized as B/ Massachusetts/2/2012-like, which is included as an influenza B component of the 2013-2014 Northern Hemisphere trivalent and quadrivalent influenza vaccines.
 - **Victoria Lineage [75]:** 75 influenza B/Victoria-lineage viruses were characterized as B/Brisbane/60/2008-like, which is included as an influenza B component of the 2013-2014 Northern Hemisphere quadrivalent influenza vaccine.

*For more information see the section on antigenic characterization in the [MMWR "Update: Influenza Activity — United States and Worldwide, May 19–September 28, 2013"](#).

Composition of the 2014-2015 Influenza Vaccine: The World Health Organization (WHO) has recommended vaccine viruses for the 2014-2015 Northern Hemisphere influenza vaccines, and the Food and Drug Administration's Vaccines and Related Biological Products Advisory Committee (VRBPAC) has made recommendations for the composition of the 2014-2015 influenza vaccines to be used in the United States. Both agencies recommend that trivalent vaccines contain an A/California/7/2009-like (2009 H1N1) virus, an A/Texas/50/2012-like (H3N2) virus, and a B/Massachusetts/2/2012-like (B/Yamagata lineage) virus. It is recommended that quadrivalent vaccines containing an additional influenza B virus contain a B/Brisbane/60/2008-like (B/Victoria lineage) virus in addition to the viruses recommended for the trivalent vaccines. These recommendations were based on global influenza virus surveillance data related to epidemiology and antigenic characteristics, serological responses to 2013-2014 seasonal vaccines, and the availability of candidate strains and reagents.

Antiviral Resistance: Testing of 2009 H1N1, influenza A (H3N2), and influenza B virus isolates for resistance to neuraminidase inhibitors (oseltamivir and zanamivir) is performed at CDC using a functional assay. Additional 2009 H1N1 and influenza A (H3N2) clinical samples are tested for mutations of the virus known to confer oseltamivir resistance. The data summarized below combine the results of both testing methods. These samples are routinely obtained for surveillance purposes rather than for diagnostic testing of patients suspected to be infected with antiviral-resistant virus.

High levels of resistance to the adamantanes (amantadine and rimantadine) persist among 2009 influenza A (H1N1) and A (H3N2) viruses (the adamantanes are not effective against influenza B viruses). Therefore, data from adamantane resistance testing are not presented below.

Neuraminidase Inhibitor Resistance Testing Results on Samples Collected Since October 1, 2013

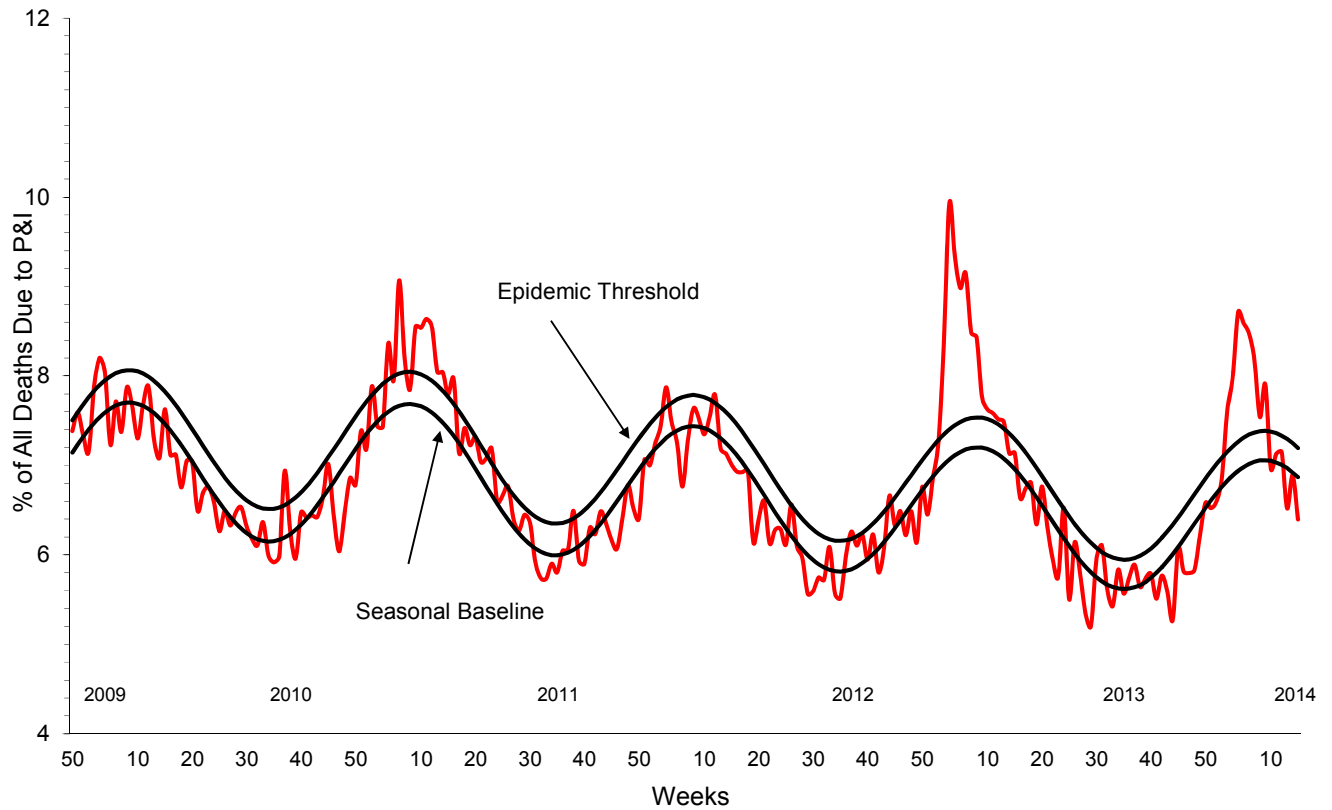
	Oseltamivir		Zanamivir	
	Virus Samples tested (n)	Resistant Viruses, Number (%)	Virus Samples tested (n)	Resistant Viruses, Number (%)
Influenza A (H3N2)	416	0 (0.0)	416	0 (0.0)
Influenza B	296	0 (0.0)	296	0 (0.0)
2009 H1N1	4,899*	56 (1.1)	1,773	0 (0.0)

*Includes specimens tested in national surveillance and additional specimens tested at public health laboratories in 19 states (AZ, CA, CO, DE, FL, GA, HI, ID, MA, ME, MD, MI, MN, NY, PA, TX, UT, WA, and WI) who share testing results with CDC.

The majority of currently circulating influenza viruses are susceptible to the neuraminidase inhibitor antiviral medications, oseltamivir and zanamivir; however, rare sporadic cases of oseltamivir-resistant 2009 H1N1 and A (H3N2) viruses have been detected worldwide. Antiviral treatment with oseltamivir or zanamivir is recommended as early as possible for patients with confirmed or suspected influenza who have severe, complicated, or progressive illness; who require hospitalization; or who are at greater risk for serious influenza-related complications. Additional information on recommendations for treatment and chemoprophylaxis of influenza virus infection with antiviral agents is available at <http://www.cdc.gov/flu/antivirals/index.htm>.

Pneumonia and Influenza (P&I) Mortality Surveillance: During week 15, 6.4% of all deaths reported through the 122 Cities Mortality Reporting System were due to P&I. This percentage was below the epidemic threshold of 7.2% for week 15.

Pneumonia and Influenza Mortality for 122 U.S. Cities Week ending April 12, 2014

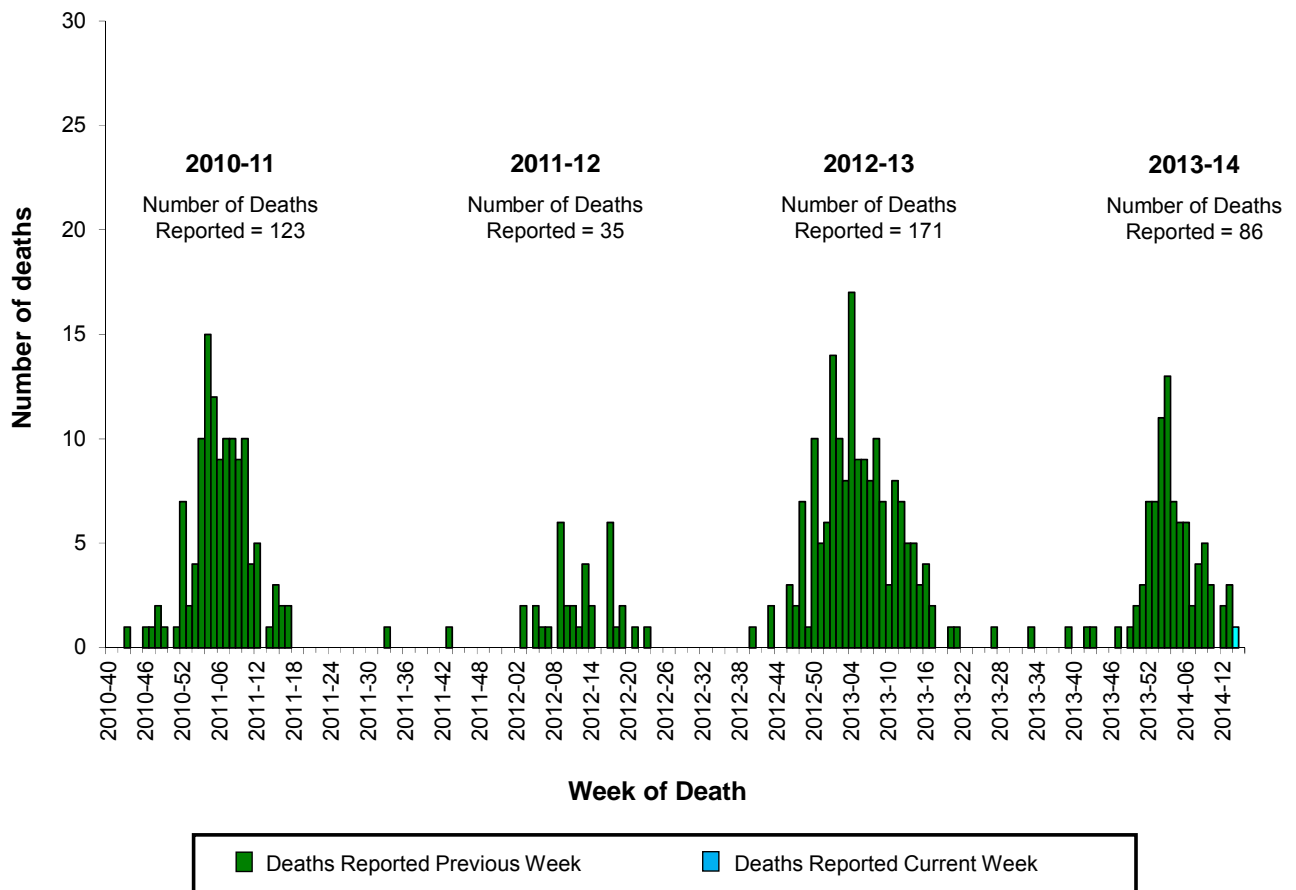


Influenza-Associated Pediatric Mortality: One influenza-associated pediatric death was reported to CDC during week 15. This death was associated with an influenza B virus and occurred during week 14 (week ending April 5, 2014).

A total of 86 influenza-associated pediatric deaths have been reported during the 2013-2014 season from Chicago [1], New York City [4] and 29 states (AR [4]; AZ [1]; CA [8]; FL [4]; GA [1]; IA [1]; IL [1]; KS [2]; KY [1]; LA [5]; MA [2]; MD [1]; ME [1]; MI [2]; MS [1]; NC [6]; NE [1]; NJ [1]; NV [1]; OK [2]; OR [1]; PA [3]; SC [2]; TN [4]; TX [18]; UT [2]; VA [1]; WI [2]; and WV [2]).

Additional data can be found at <http://gis.cdc.gov/GRASP/Fluview/PedFluDeath.html>.

Number of Influenza-Associated Pediatric Deaths by Week of Death:
2010-11 season to present



Influenza-Associated Hospitalizations: The Influenza Hospitalization Surveillance Network (FluSurv-NET) conducts population-based surveillance for laboratory-confirmed influenza-related hospitalizations in children younger than 18 years of age (since the 2003-2004 influenza season) and adults (since the 2005-2006 influenza season).

The FluSurv-NET covers more than 70 counties in the 10 Emerging Infections Program (EIP) states (CA, CO, CT, GA, MD, MN, NM, NY, OR, TN) and additional Influenza Hospitalization Surveillance Project (IHSP) states. The IHSP began during the 2009-2010 season to enhance surveillance during the 2009 H1N1 pandemic. IHSP sites included IA, ID, MI, OK and SD during the 2009-2010 season; ID, MI, OH, OK, RI, and UT during the 2010-2011 season; MI, OH, RI, and UT during the 2011-2012 season; IA, MI, OH, RI, and UT during the 2012-2013 season; and MI, OH, and UT during the 2013-2014 season.

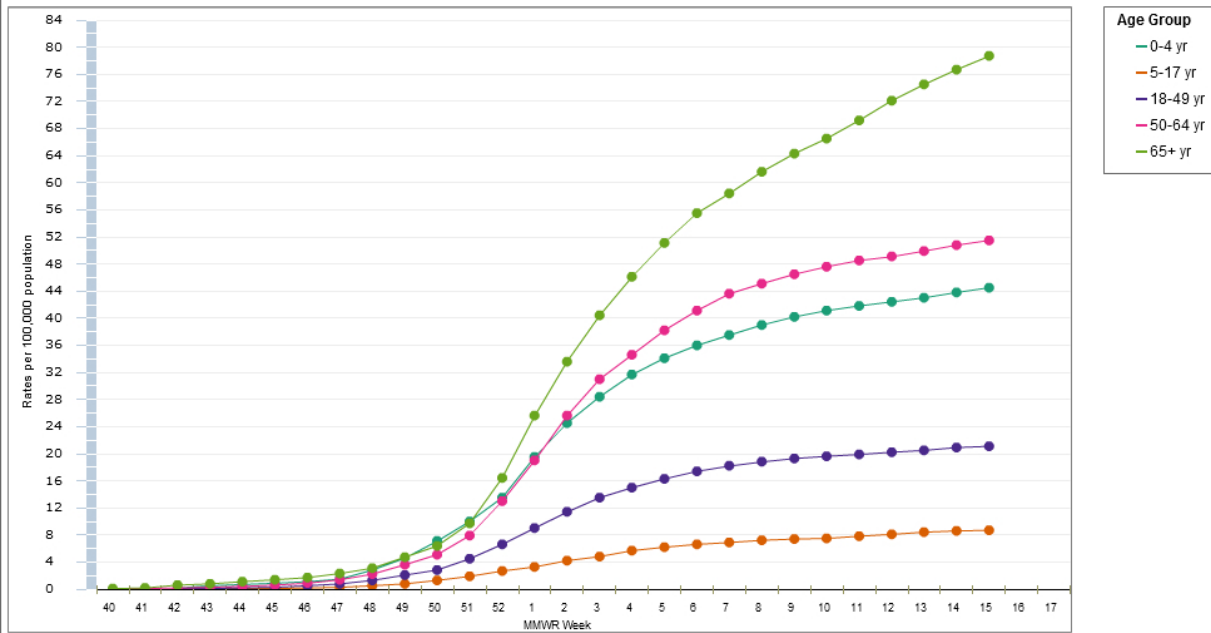
Data gathered are used to estimate age-specific hospitalization rates on a weekly basis, and describe characteristics of persons hospitalized with severe influenza illness. The rates provided are likely to be an underestimate as influenza-related hospitalizations can be missed, either because testing is not performed, or because cases may be attributed to other causes of pneumonia or other common influenza-related complications.

Between October 1, 2013 and April 12, 2014, 8,995 laboratory-confirmed influenza-associated hospitalizations were reported. This is a rate of 33.2 per 100,000 population. The highest rate of hospitalization is among adults aged ≥ 65 years, with a steady increase in weekly rates observed in the past few weeks. Nonetheless, people aged 18-64 years still accounted for approximately 60% of reported hospitalized cases. Among all hospitalizations, 8,171 (90.8%) were associated with influenza A, 730 (8.1%) with influenza B, 43 (0.5%) with influenza A and B co-infection, and 51 (0.6%) had no virus type information. Among those with influenza A subtype information, 153 (3.8%) were H3 and 3,872 (96.2%) were 2009 H1N1.

Clinical findings are preliminary and based on approximately 60% of cases with complete medical chart abstraction. The most commonly reported underlying medical conditions among adults were obesity, metabolic disorders, cardiovascular disease, and chronic lung disease (excluding asthma). Approximately 12% of hospitalized adults had no identified underlying medical conditions. The most commonly reported underlying medical conditions in children were asthma, neurologic disorders, chronic lung disease (excluding asthma), and cardiovascular disease. Approximately 44% of hospitalized children had no identified underlying medical conditions. Among 730 hospitalized women of childbearing age (15-44 years), 167 (23%) were pregnant.

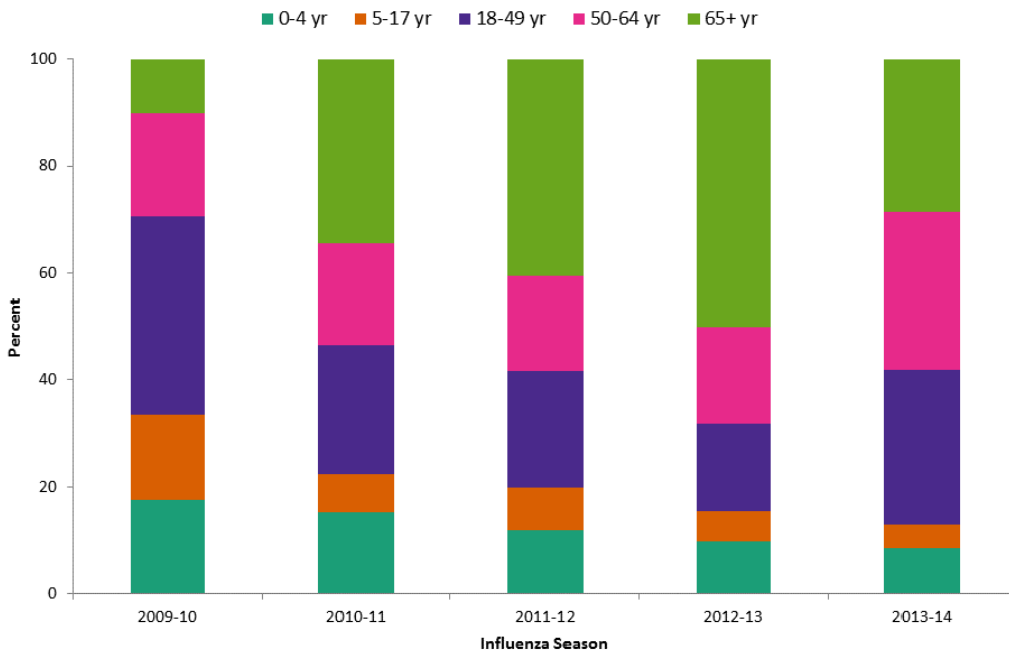
Additional FluSurv-NET data can be found at: <http://gis.cdc.gov/GRASP/Fluview/FluHospRates.html> and <http://gis.cdc.gov/grasp/fluview/FluHospChars.html>.

Laboratory-Confirmed Influenza Hospitalizations
Preliminary rates as of Apr 12, 2014

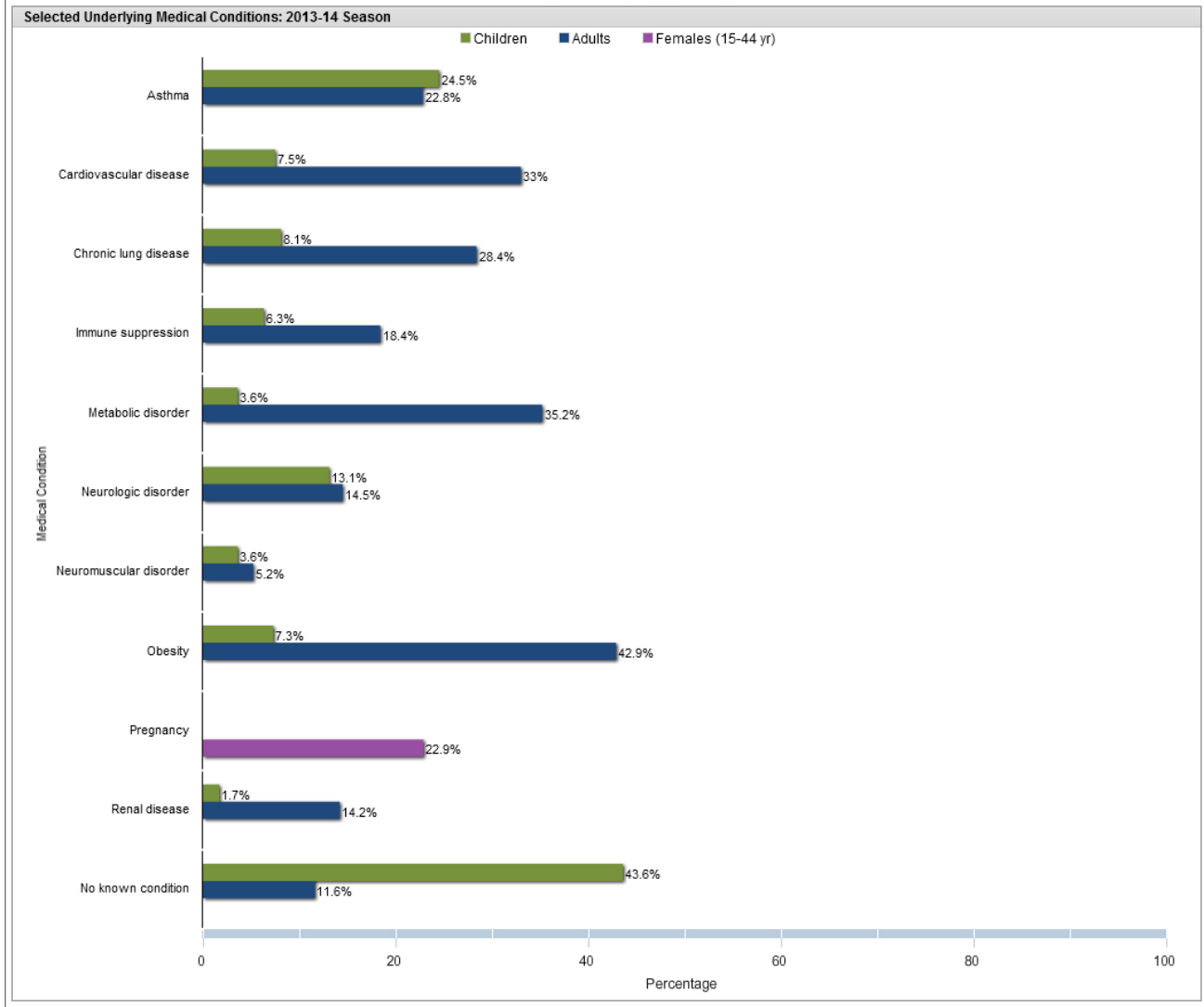


Data from the Influenza Hospitalization Surveillance Network (FluSurv-NET), a population-based surveillance for influenza related hospitalizations in children and adults in 13 US states. Incidence rates are calculated using the National Center for Health Statistics' (NCHS) population estimates for the counties included in the surveillance catchment area.

Laboratory-Confirmed Influenza Hospitalizations by Age Group
Preliminary data as of Apr 12, 2014



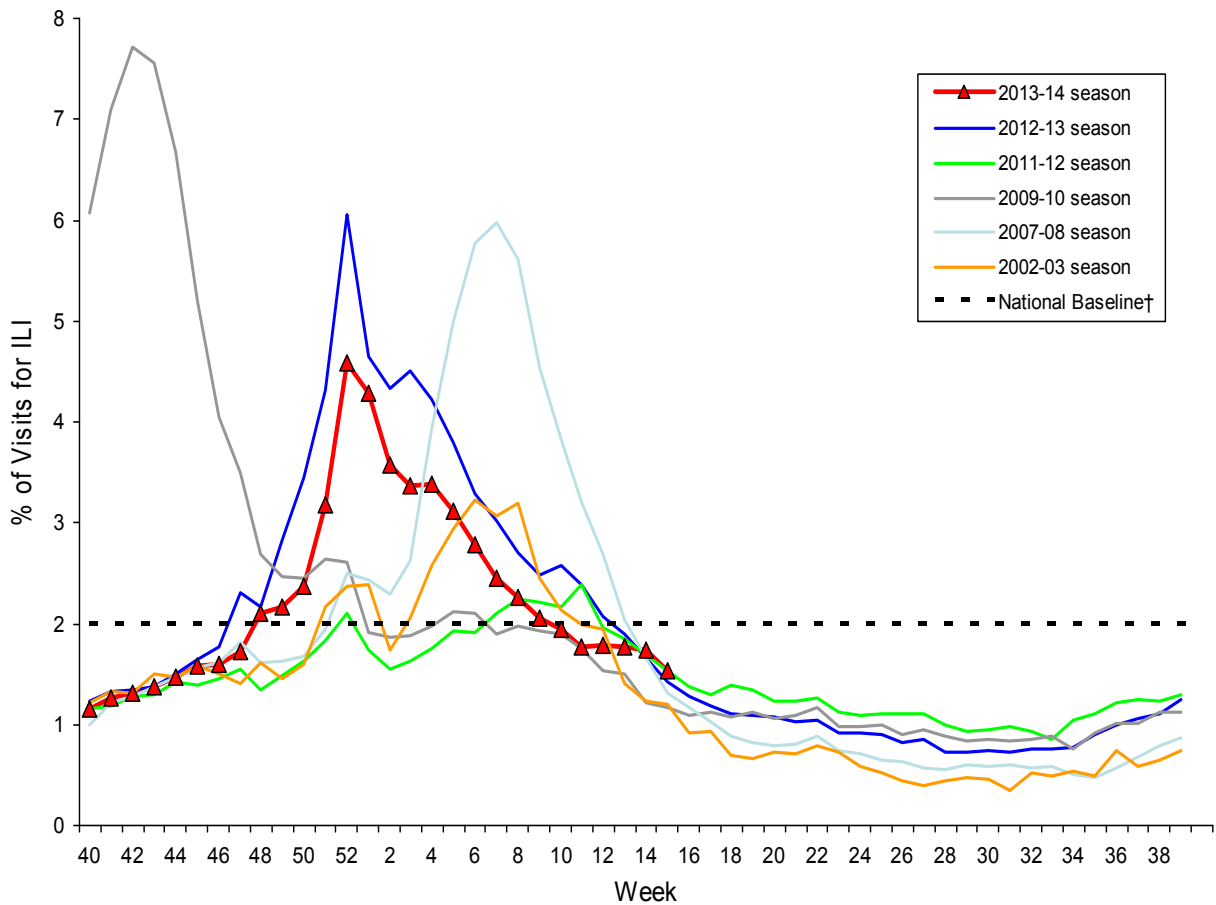
Laboratory-Confirmed Influenza Hospitalizations
Preliminary data as of Apr 12, 2014



Asthma includes a medical diagnosis of asthma or reactive airway disease; Cardiovascular diseases include conditions such as coronary heart disease, cardiac valve disorders, congestive heart failure, and pulmonary hypertension, does not include isolated hypertension; Chronic lung diseases include conditions such as chronic obstructive pulmonary disease, bronchiolitis obliterans, chronic aspiration pneumonia, and interstitial lung disease; Immune suppression includes conditions such as immunoglobulin deficiency, leukemia, lymphoma, HIV/AIDS, and individuals taking immunosuppressive medications; Metabolic disorders include conditions such as diabetes mellitus, thyroid dysfunction, adrenal insufficiency, and liver disease; Neurologic disorders include conditions such as seizure disorders, cerebral palsy, and cognitive dysfunction; Neuromuscular disorders include conditions such as multiple sclerosis and muscular dystrophy; Obesity was assigned if indicated in patient's medical chart or if body mass index (BMI) >30 kg/m²; Pregnancy percentage calculated using number of female cases aged between 15 and 44 years of age as the denominator; Renal diseases include conditions such as acute or chronic renal failure, nephrotic syndrome, glomerulonephritis, and impaired creatinine clearance; No known condition indicates that the case did not have any known underlying medical condition indicated in medical chart at the time of hospitalization. Includes only cases for which data collection has been completed through the medical chart review stage.

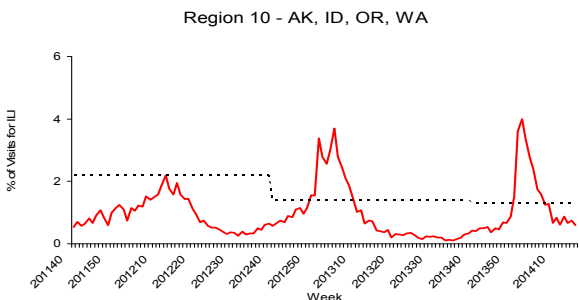
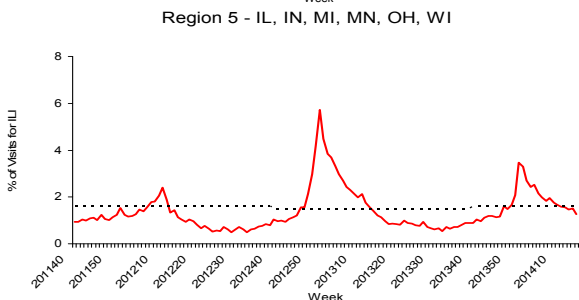
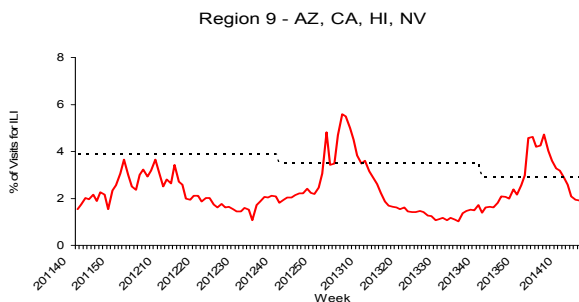
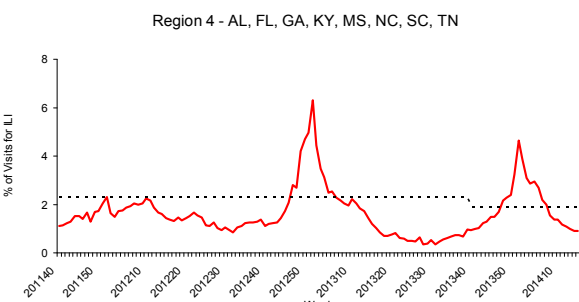
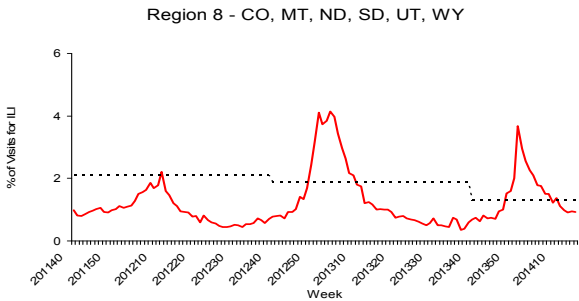
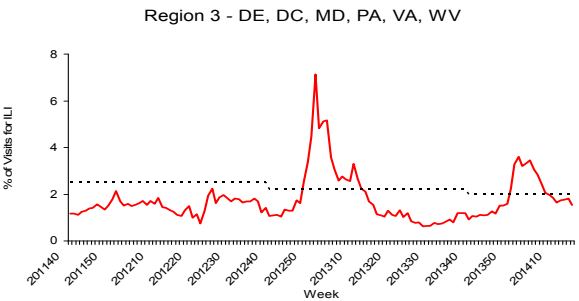
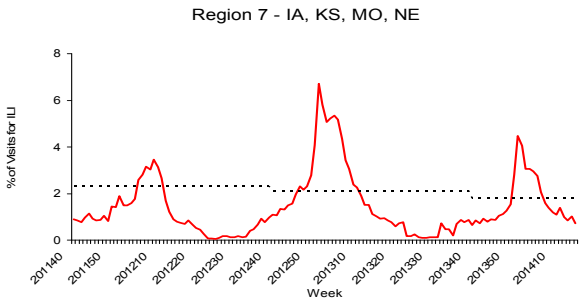
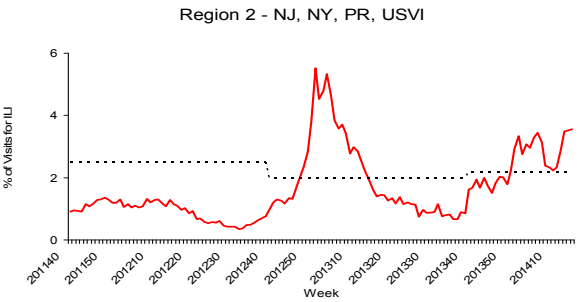
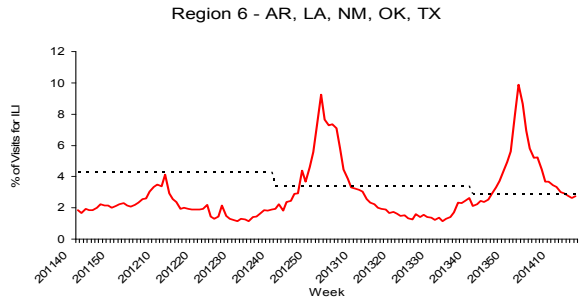
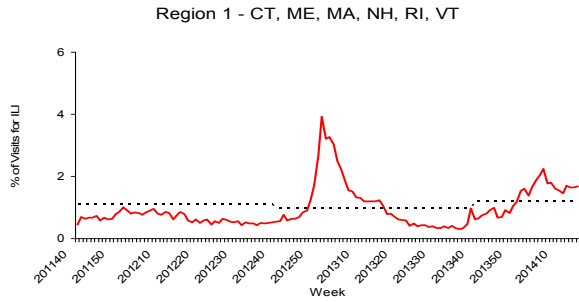
Outpatient Illness Surveillance: Nationwide during week 15, 1.5% of patient visits reported through the U.S. Outpatient Influenza-like Illness Surveillance Network (ILINet) were due to influenza-like illness (ILI). This percentage is below the national baseline of 2.0%. (ILI is defined as fever (temperature of 100°F [37.8°C] or greater) and cough and/or sore throat.)

Percentage of Visits for Influenza-like Illness (ILI) Reported by the U.S. Outpatient Influenza-like Illness Surveillance Network (ILINet), Weekly National Summary, 2013-14 and Selected Previous Seasons



On a regional level, the percentage of outpatient visits for ILI ranged from 0.6% to 3.6% during week 15. Two of 10 regions reported a proportion of outpatient visits for ILI at or above their region-specific baseline level.

Region-specific data is available at <http://gis.cdc.gov/grasp/fluview/fluportaldashboard.html>.



— % ILI - - - - - Baseline*

NOTE: Scales differ between regions
 *Use of the regional baselines for state data is not appropriate.

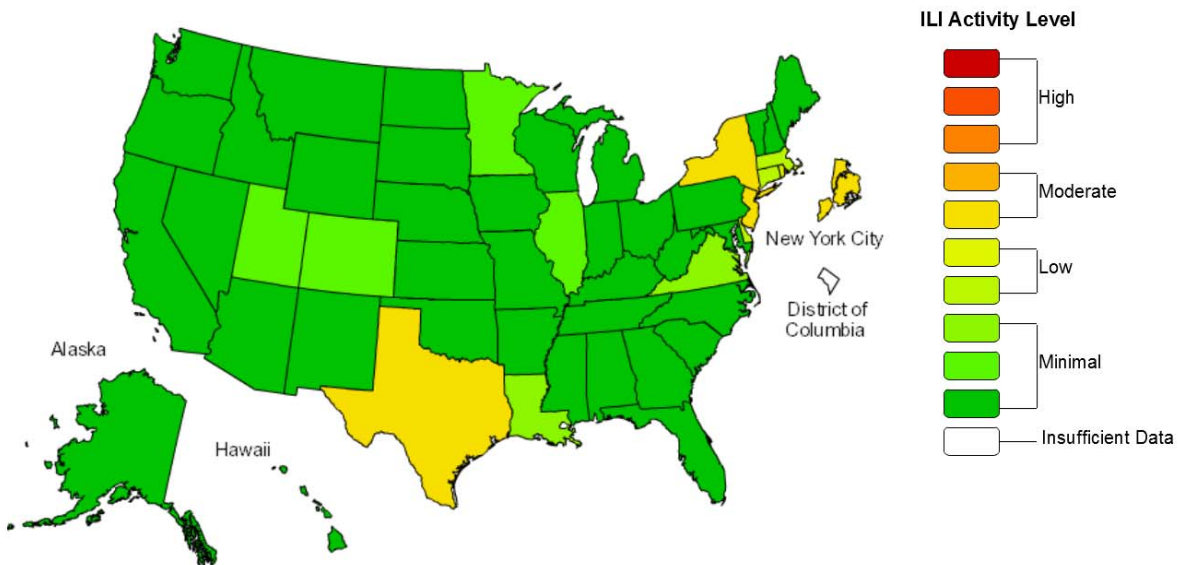


ILINet Activity Indicator Map: Data collected in ILINet are used to produce a measure of ILI activity* by state. Activity levels are based on the percent of outpatient visits in a state due to ILI and are compared to the average percent of ILI visits that occur during weeks with little or no influenza virus circulation. Activity levels range from minimal, which would correspond to ILI activity from outpatient clinics being below, or only slightly above, the average, to high, which would correspond to ILI activity from outpatient clinics being much higher than average.

During week 15, the following ILI activity levels were experienced:

- Three states and New York City experienced moderate ILI activity (New Jersey, New York, and Texas).
- Four states experienced low ILI activity (Connecticut, Delaware, Massachusetts, and Rhode Island).
- Forty-three states experienced minimal ILI activity (Alabama, Alaska, Arizona, Arkansas, California, Colorado, Florida, Georgia, Hawaii, Idaho, Illinois, Indiana, Iowa, Kansas, Kentucky, Louisiana, Maine, Maryland, Michigan, Minnesota, Mississippi, Missouri, Montana, Nebraska, Nevada, New Hampshire, New Mexico, North Carolina, North Dakota, Ohio, Oklahoma, Oregon, Pennsylvania, South Carolina, South Dakota, Tennessee, Utah, Vermont, Virginia, Washington, West Virginia, Wisconsin, and Wyoming).
- Data were insufficient to calculate an ILI activity level for the District of Columbia.

**Influenza-Like Illness (ILI) Activity Level Indicator Determined by Data Reported to ILINet
2013-14 Influenza Season Week 15 ending Apr 12, 2014**



*This map uses the proportion of outpatient visits to health care providers for influenza-like illness to measure the ILI activity level within a state. It does not, however, measure the extent of geographic spread of flu within a state. Therefore, outbreaks occurring in a single city could cause the state to display high activity levels.

Data collected in ILINet may disproportionately represent certain populations within a state, and therefore, may not accurately depict the full picture of influenza activity for the whole state.

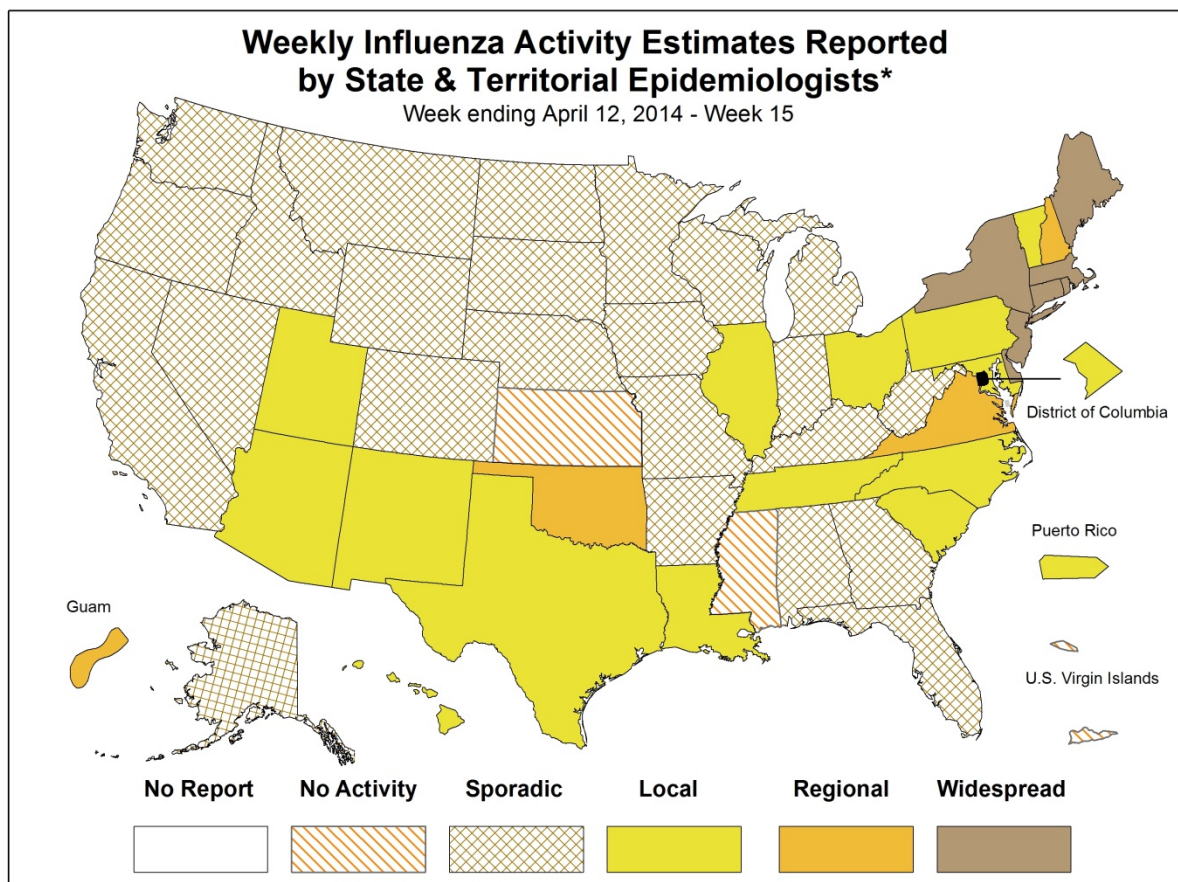
Data displayed in this map are based on data collected in ILINet, whereas the State and Territorial flu activity map is based on reports from state and territorial epidemiologists. The data presented in this map is preliminary and may change as more data is received.

Differences in the data presented here by CDC and independently by some state health departments likely represent differing levels of data completeness with data presented by the state likely being the more complete.

Geographic Spread of Influenza as Assessed by State and Territorial Epidemiologists: The influenza activity reported by state and territorial epidemiologists indicates geographic spread of influenza viruses, but does not measure the severity of influenza activity.

During week 15, the following influenza activity was reported:

- Widespread influenza activity was reported by six states (Connecticut, Delaware, Maine, New Jersey, New York, and Rhode Island).
- Regional influenza activity was reported by Guam and four states (Massachusetts, New Hampshire, Oklahoma, and Virginia).
- Local influenza activity was reported by the District of Columbia, Puerto Rico, and 14 states (Arizona, Illinois, Hawaii, Louisiana, Maryland, New Mexico, North Carolina, Ohio, Pennsylvania, South Carolina, Tennessee, Texas, Utah, and Vermont).
- Sporadic influenza activity was reported by 24 states (Alabama, Alaska, Arkansas, California, Colorado, Florida, Georgia, Idaho, Indiana, Iowa, Kentucky, Michigan, Minnesota, Missouri, Montana, Nebraska, Nevada, North Dakota, Oregon, South Dakota, Washington, West Virginia, Wisconsin, and Wyoming).
- The U.S. Virgin Islands and two states (Kansas and Mississippi) reported no influenza activity.



* This map indicates geographic spread & does not measure the severity of influenza activity

A description of surveillance methods is available at: <http://www.cdc.gov/flu/weekly/overview.htm>
Report prepared: April 18, 2014.

Additional National and International Influenza Surveillance Information

FluView Interactive: FluView includes enhanced web-based interactive applications that can provide dynamic visuals of the influenza data collected and analyzed by CDC. These FluView Interactive applications allow people to create customized, visual interpretations of influenza data, as well as comparisons across flu seasons, regions, age groups and a variety of other demographics. To access these tools visit www.cdc.gov/flu/weekly/fluviewinteractive.htm.

U.S. State and local influenza surveillance: Click on a jurisdiction below to access the latest local influenza information.

Alabama	Alaska	Arizona	Arkansas	California
Colorado	Connecticut	Delaware	District of Columbia	Florida
Georgia	Hawaii	Idaho	Illinois	Indiana
Iowa	Kansas	Kentucky	Louisiana	Maine
Maryland	Massachusetts	Michigan	Minnesota	Mississippi
Missouri	Montana	Nebraska	Nevada	New Hampshire
New Jersey	New Mexico	New York	North Carolina	North Dakota
Ohio	Oklahoma	Oregon	Pennsylvania	Rhode Island
South Carolina	South Dakota	Tennessee	Texas	Utah
Vermont	Virginia	Washington	West Virginia	Wisconsin
Wyoming	New York City	Virgin Islands		

Google Flu Trends: Google Flu Trends uses aggregated Google search data in a model created in collaboration with CDC to estimate influenza activity in the United States. For more information and activity estimates from the U.S. and worldwide, see <http://www.google.org/flutrends/>.

World Health Organization: Additional influenza surveillance information from participating WHO member nations is available through [FluNet](#) and the [Global Epidemiology Reports](#).

WHO Collaborating Centers for Influenza located in [Australia](#), [China](#), [Japan](#), and the [United Kingdom](#).

Europe: WHO/Europe at <http://www.euroflu.org/index.php> and the European Centre for Disease Prevention and Control at http://ecdc.europa.eu/en/publications/surveillance_reports/influenza/Pages/weekly_influenza_surveillance_overview.aspx.

Public Health Agency of Canada: The most up-to-date influenza information from Canada is available at <http://www.phac-aspc.gc.ca/fluwatch/>.

Health Protection Agency (United Kingdom): The most up-to-date influenza information from the United Kingdom is available at <http://www.hpa.org.uk/Topics/InfectiousDiseases/InfectionsAZ/SeasonalInfluenza/>.

Any links provided to non-Federal organizations are provided solely as a service to our users. These links do not constitute an endorsement of these organizations or their programs by CDC or the Federal Government, and none should be inferred. CDC is not responsible for the content of the individual organization web pages found at these links.