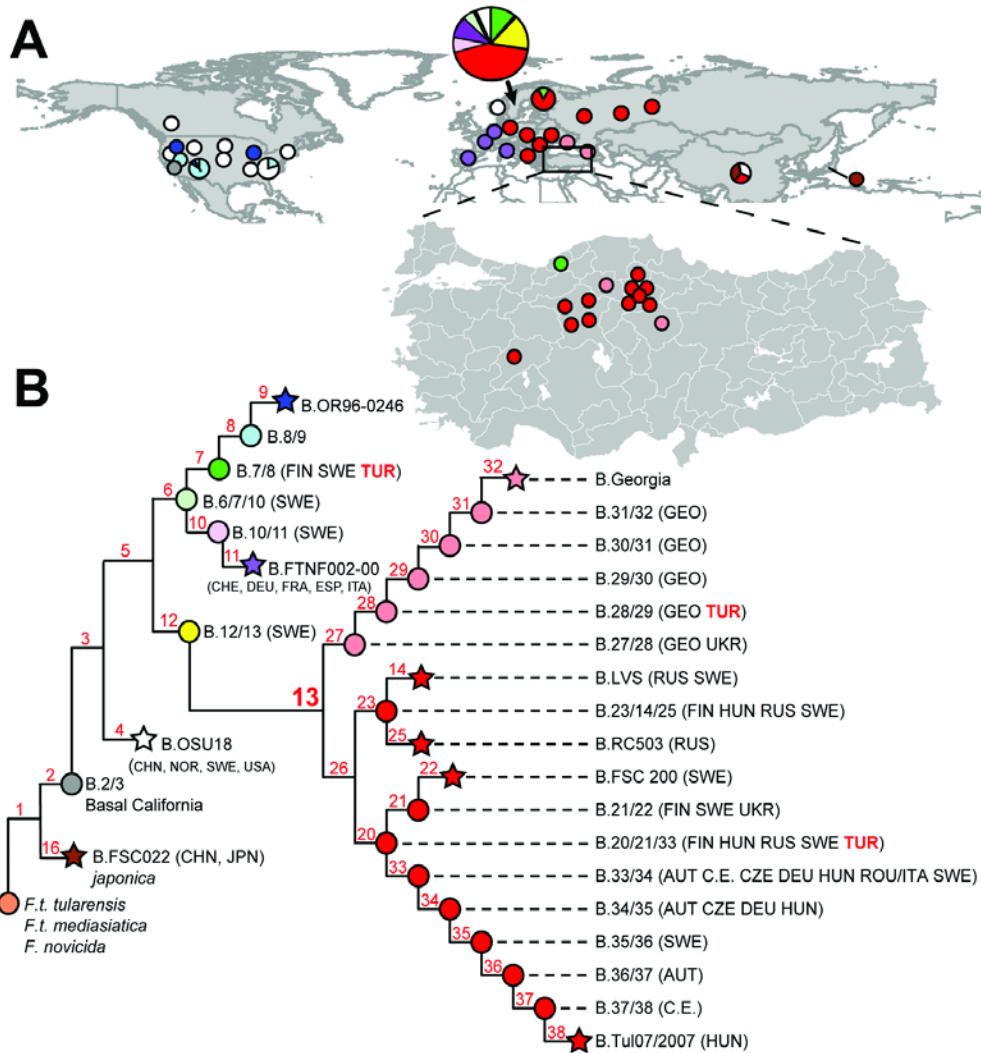


Technical Appendix

Diverse *Francisella tularensis* Strains and Oropharyngeal Tularemia, Turkey



Appendix Figure. Global phylogeography of *Francisella tularensis* subsp. *holarctica* and location of 14 clinical samples from Turkey. A) Global distribution of known phylogenetic groups (3,4,6,7) and expanded map of Turkey indicating provinces where the 14 patients lived (colored circles). Circle colors indicate phylogenetic groups to which the 14 samples were assigned. B) Current single-nucleotide polymorphism-based phylogenetic tree for *F. tularensis*. Red numbers indicate canonical single-nucleotide

polymorphisms (3,4,6,7). Countries of origin for strains assigned to relevant phylogenetic groups are indicated as follows: AUT, Austria; C.E., central Europe, unknown country; CZE, Czech Republic; DEU, Germany; FIN, Finland; GEO, Georgia; HUN, Hungary; ITA, Italy; ROU, Romania; RUS, Russia; SWE, Sweden; TUR, Turkey; UKR, Ukraine). **Bold red text** indicates phylogenetic placement of the 14 clinical samples examined in this study.