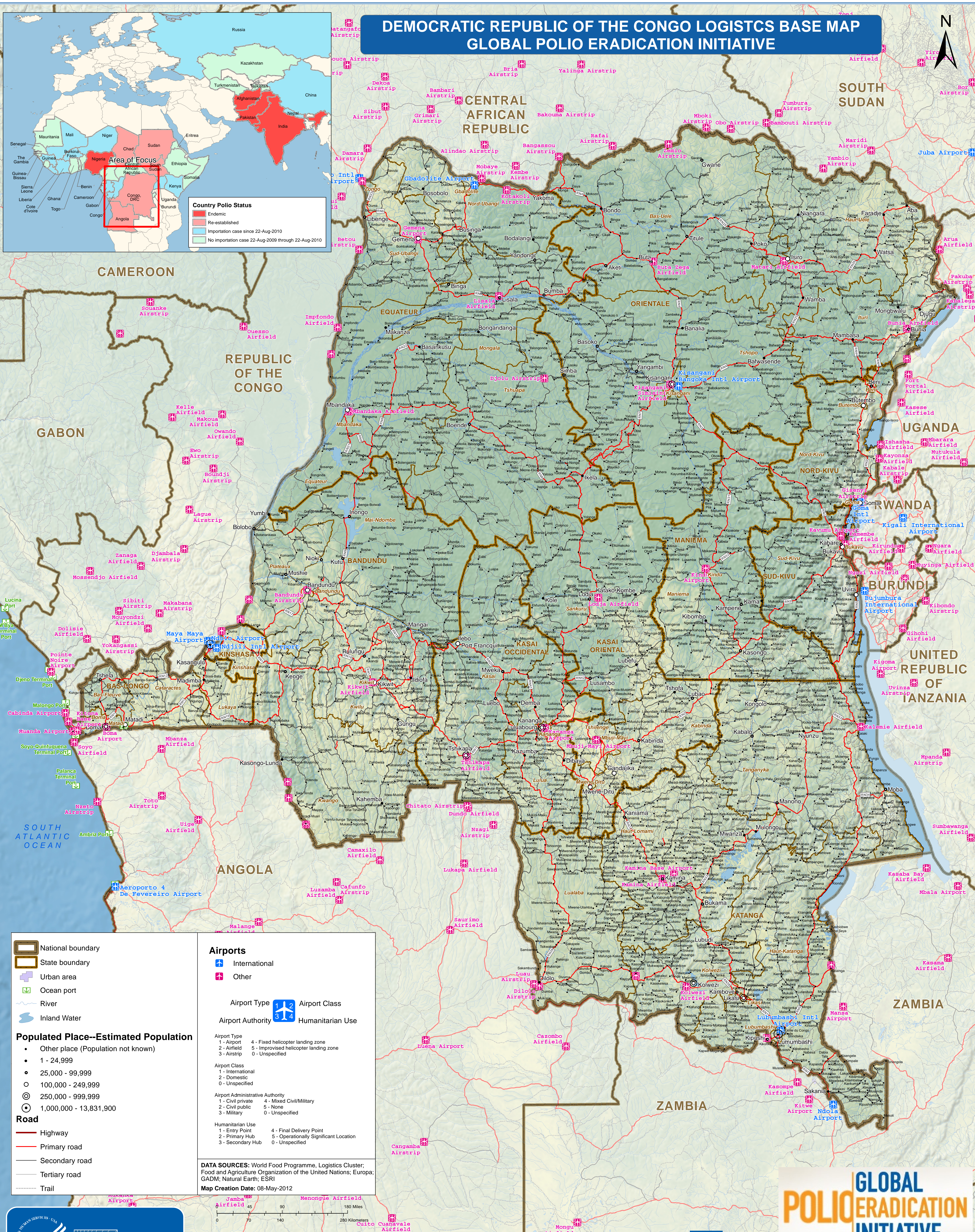


DEMOCRATIC REPUBLIC OF THE CONGO LOGISTICS BASE MAP GLOBAL POLIO ERADICATION INITIATIVE



GLOBAL
POLIO ERADICATION
INITIATIVE

DRC Detail Log GEPI CDC SA-GRASP (2012-May-07) Poster Portrait

E-mail: eocgis@cdc.gov | Web: www.atsdr.cdc.gov

The findings and conclusions in this report are those of the authors and do not necessarily represent the official position of Centers for Disease Control and Prevention