

# MARYLAND

## Map of Stroke and Federally Qualified Health Centers BY CONGRESSIONAL DISTRICT & COUNTY 119<sup>th</sup> CONGRESS

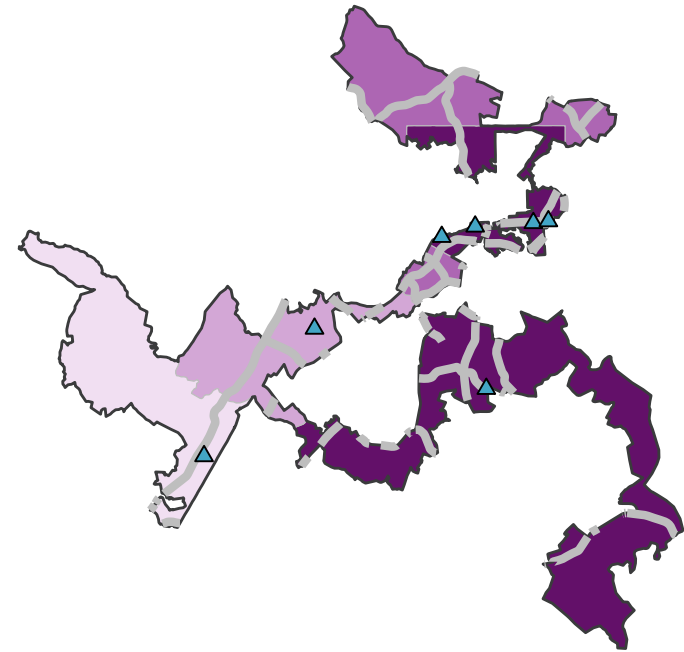
Stroke death rates can differ considerably within a congressional district.

These maps highlight the patterns in county-level stroke death rates within this congressional district.

### DISTRICT 3

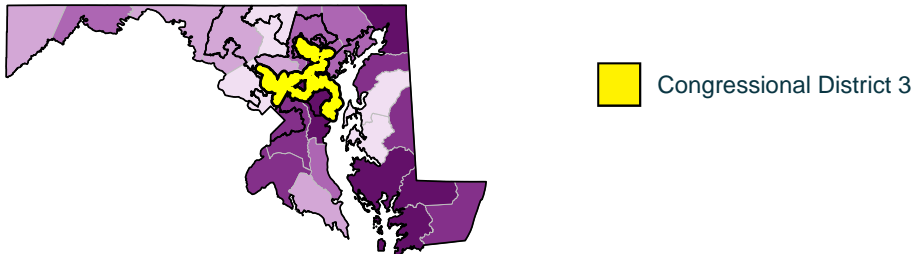
#### Stroke Death Rate

By county, per 100,000 persons  
Ages 35 years and older, 2021 – 2023



#### Stroke Death Rate | Maryland

91 per 100,000 persons



\*Congressional district boundaries do not align with county boundaries. Therefore, some counties may be partially included in this district.



Quick Maps Page  
FOR MORE MAPS



## Congressional Districts

### Which congressional boundaries are used to define the Congressional Districts on the map?

The Congressional Districts represent the 119th Congress of the United States. These congressional boundaries are in effect from January 2025 until the new congress begins.

## Federally Qualified Health Centers (FQHCs)

Community-based outpatient clinics providing access to health and wellness services to areas or populations that lack access to primary care.

### Where did we obtain FQHC data?

We accessed FQHC data (2026) from the Health Resource and Service Administration (HRSA). We included FQHCs that met the following criteria: a) Service delivery site = 'Hospital' or 'All Other Clinic Types', b) Active status as of the date data were downloaded, c) Location = 'Permanent', d) Health center type = 'Service Delivery Site' or 'Administrative/Service Delivery Site'.

## Heart Disease and Stroke Death Rates

### What is the geographic unit for Heart Disease and Stroke death rates on this map?

Death rates are mapped for the counties within each congressional district. When county boundaries overlap congressional districts, any portion outside the boundary of the congressional district is not displayed.

### How are the Heart Disease and Stroke death rates calculated?

For each county, death rates are calculated per 100,000 adults, ages 35 and older, averaged over 3 years (2021–2023) and displayed by quintile. For more details, see CDC's Atlas of Heart Disease and Stroke.

---

## Map Description: Maryland Congressional District 3

The map for Congressional District 3 in Maryland shows that stroke death rates (ages 35+, 2021 – 2023) for counties (or partial counties) in the district range from 60 – 117 per 100,000. For Maryland and the United States, stroke death rates are 91 and 80 per 100,000, respectively.

There are a total of 7 Federally Qualified Health Centers in District 3.