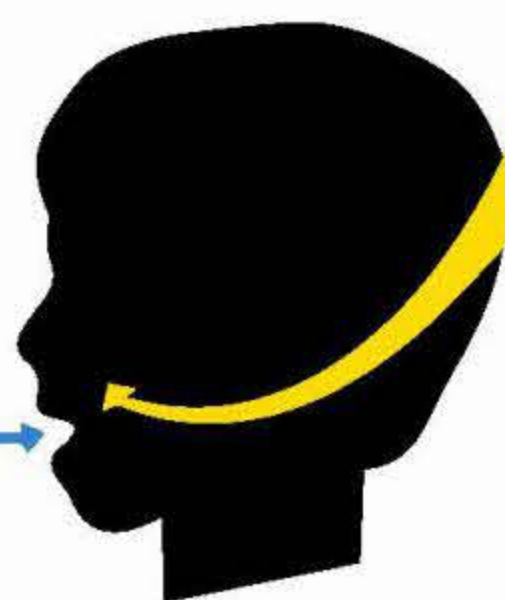
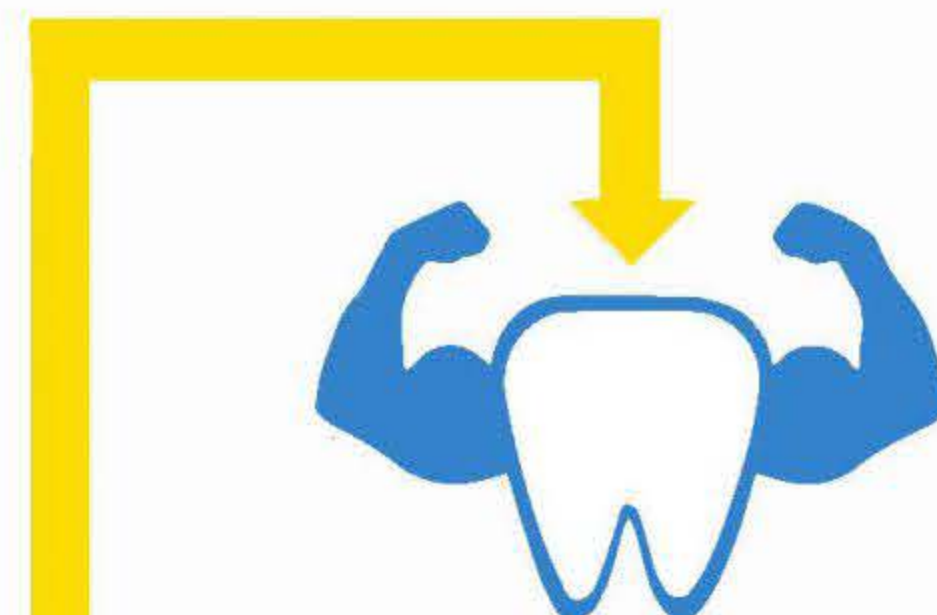


# How Fluoride Works

**FLUORIDE**  
IN DRINKING WATER



IS TAKEN IN BY  
**TEETH**  
STILL DEVELOPING  
BELOW THE GUM



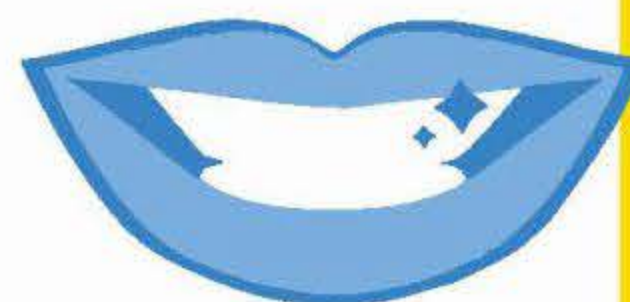
TO HELP CREATE A  
**STRONG SURFACE**

PROTECTING THE  
TEETH FROM CAVITIES

IN CHILDREN AND ADULTS

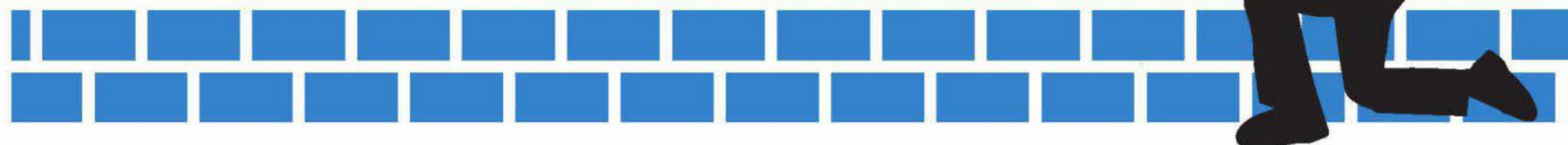
**TEETH** ARE BATHED

IN FLUORIDE WHEN DRINKING WATER



GIVING TEETH THE  
FLUORIDE THEY NEED  
ALL DAY LONG

ACID PRODUCED BY BACTERIA  
IN THE MOUTH CAN CREATE  
HOLES ON THE SURFACE  
OF THE TEETH



FLUORIDE HELPS PROTECT & REBUILD THIS SURFACE

**PREVENTING** about 25% of cavities

Build a better foundation for healthy teeth and keep your teeth stronger, longer. Fluoride in water. 75 years and going strong. At a faucet near you.

Visit [www.CDC.gov/Fluoridation](http://www.CDC.gov/Fluoridation) for more information.

CS317404-A

