

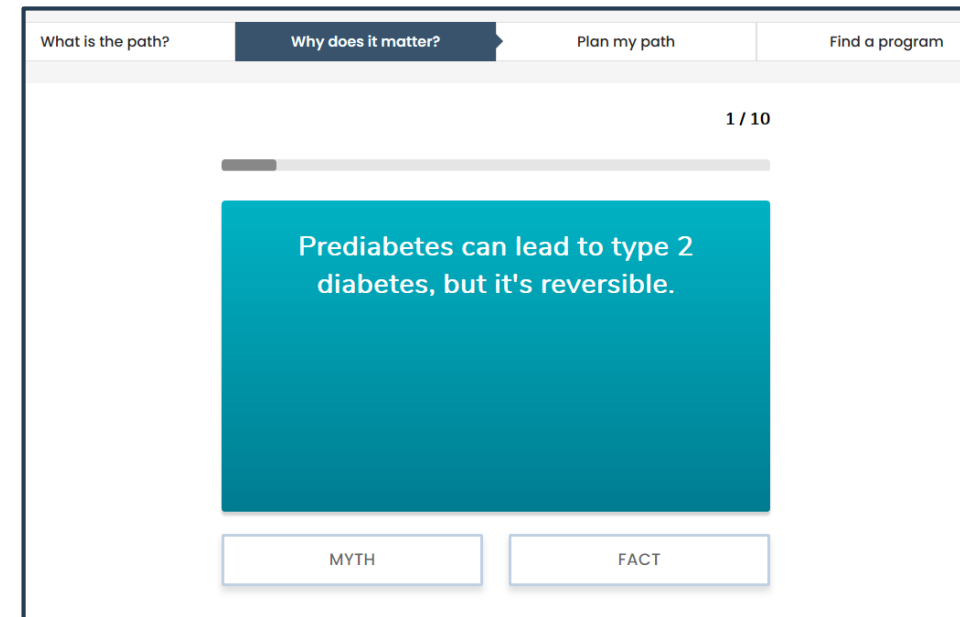
PATH PREVENTION

Bridging the gap between the CDC Prediabetes Risk Test and enrollment in the National DPP lifestyle change program

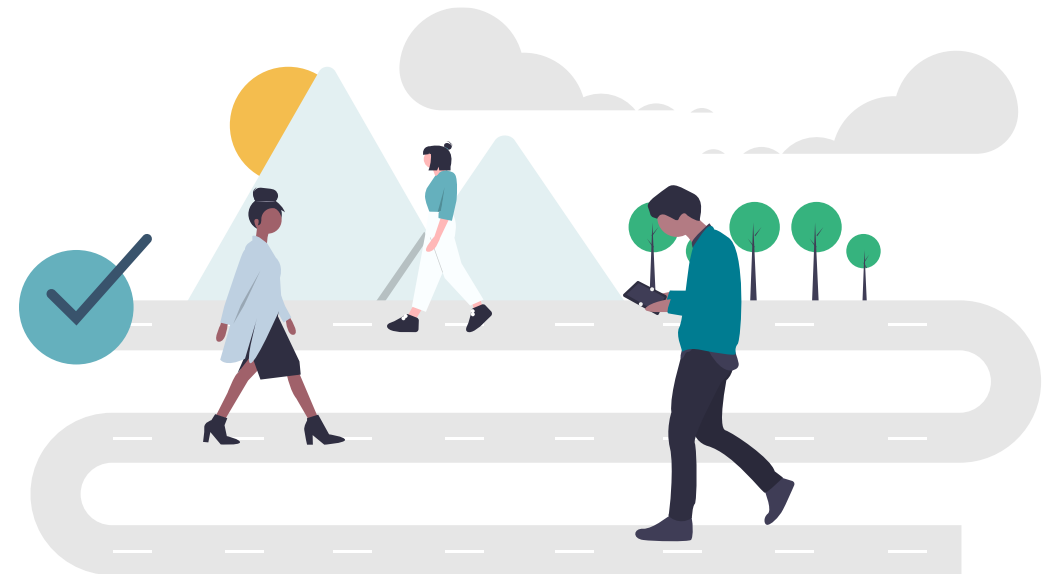
<https://diabetespath2prevention.cdc.gov/>



- Online resource for individuals to learn about prediabetes, type 2 diabetes, and the National Diabetes Prevention Program (National DPP).
- Serves as a bridge between CDC's Prediabetes Risk Test and enrollment in the National DPP lifestyle change program (LCP).
- Features interactive games, videos, and modules.
- Offers step-by-step support, resources, and a customized Action Plan to build confidence and inspire enrollment in the LCP.



- Delivers tailored interventions that lead to enrollment
- Provides trustworthy resources and information
- Helps people create a plan to enroll
- Links them to the LCP when they are ready



Individual reaches P2P directly from the [CDC Prediabetes Risk Test](#)



Provider gives a link or QR code to the P2P

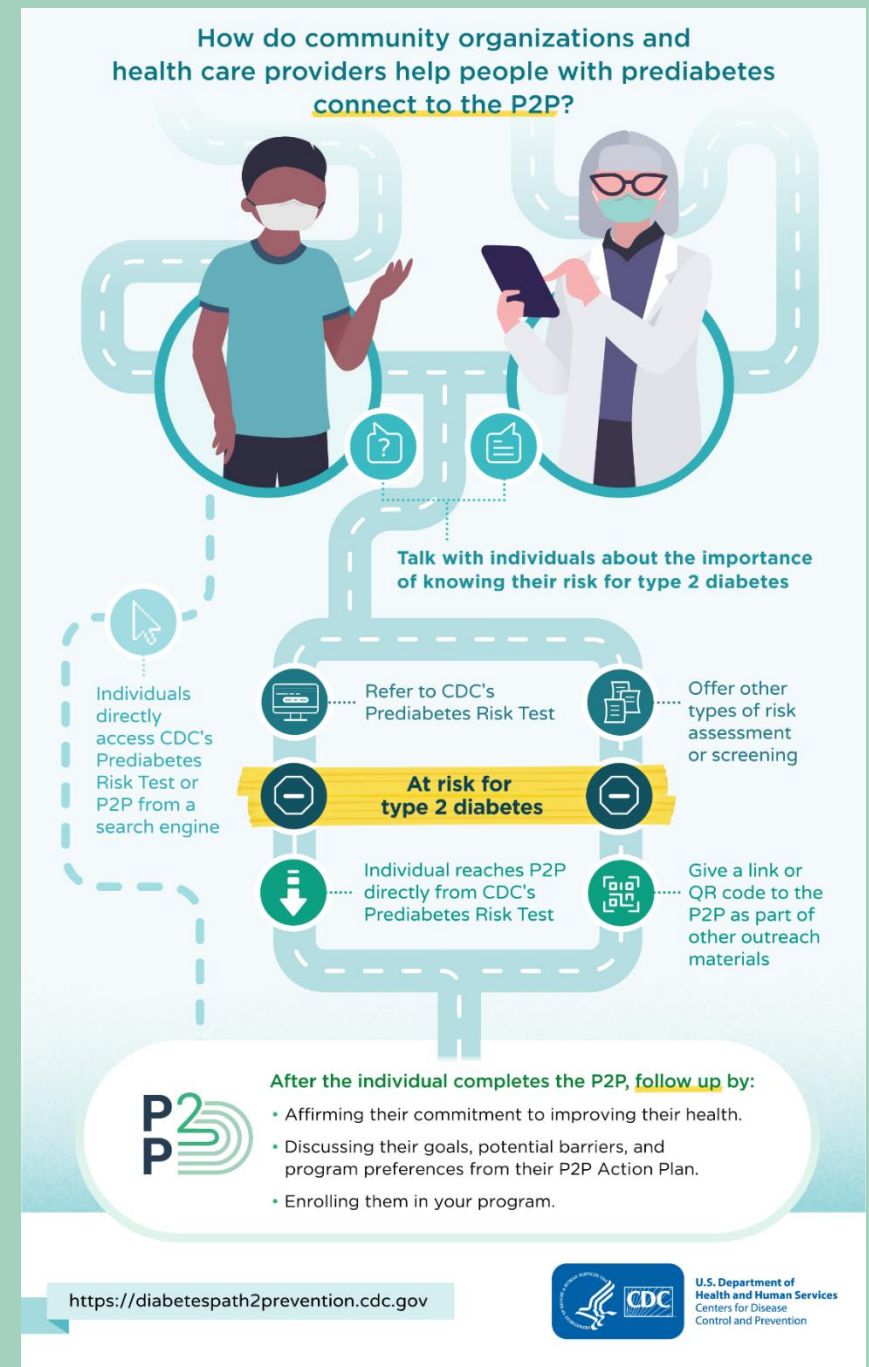


Individual directly accesses the [CDC Prediabetes Risk Test](#) or P2P from a search engine



Community organizations and health care providers can

- Raise awareness of the CDC Prediabetes Risk Test and the P2P with your patients and community members.
- Use the QR code or share the P2P link as part of other assessment and screening activities.
- Follow up after individuals complete the P2P to discuss their Action Plans.
- Share the P2P with colleagues and partners using the available outreach materials.



Social Media Messages

- Ready-to-go posts for Twitter and Facebook

Graphics

- Downloadable infographic
- Digital ads for newsletters, websites, and more.

**PATH
PREVENTION**

Inspire and encourage enrollment in the **National Diabetes Prevention Program** lifestyle change program with this new online planning resource for people with prediabetes. It can be a great partner to your outreach efforts.

<https://diabetespath2prevention.cdc.gov>

 U.S. Department of Health and Human Services
Centers for Disease Control and Prevention

Available at the National DPP Customer Service Center:
nationaldppcsc.cdc.gov/s/