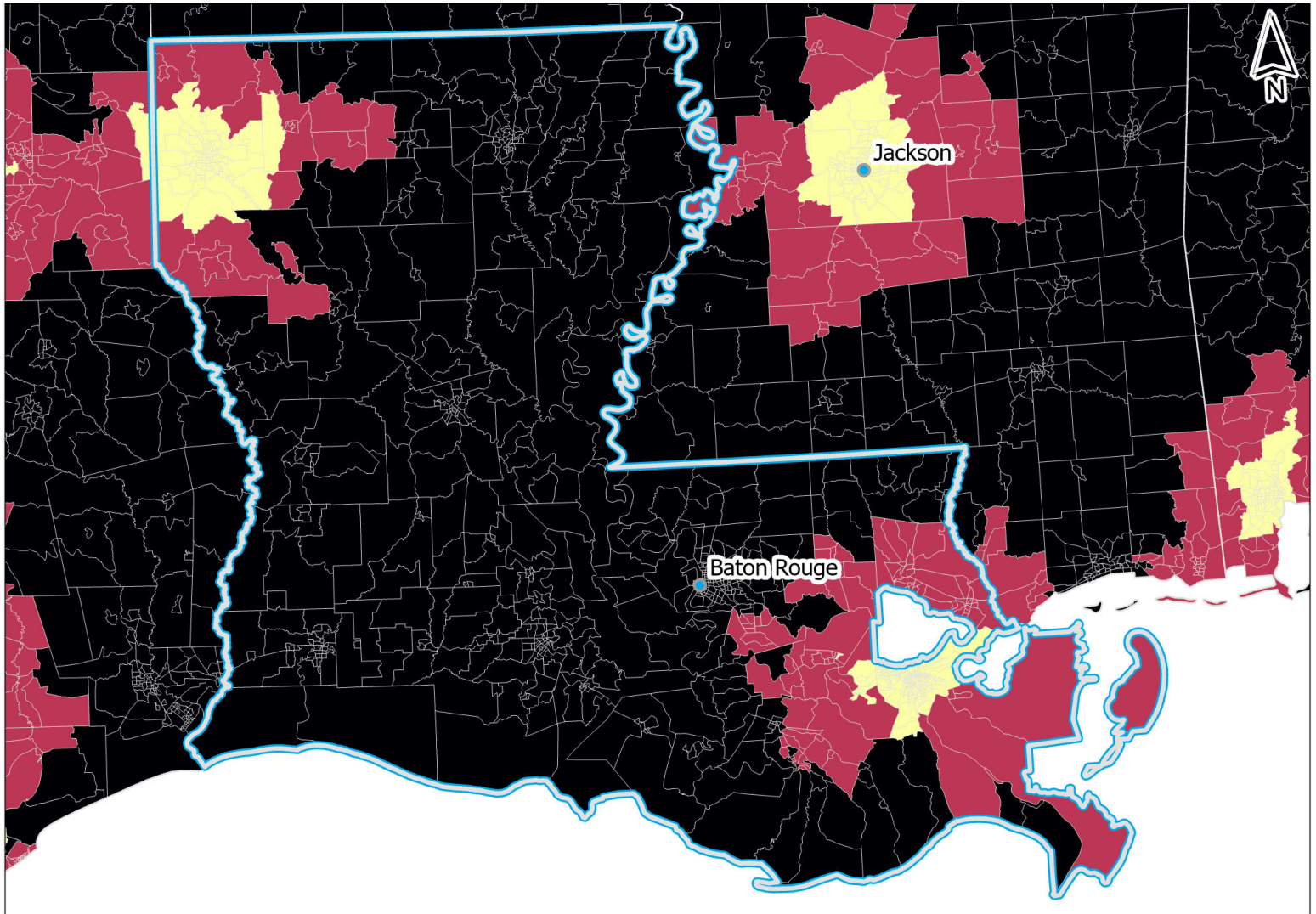





Disparities in Timely Access to Certified Stroke Care: Louisiana

Drive Time to Advanced Stroke Care



Around 49 million U.S. adults lack timely access to advanced stroke care in areas that have high levels of risk factors—where every minute matters. These maps point to opportunities where strengthening stroke prevention education, telehealth infrastructure, and facilities could improve stroke care in your community.

Drive Time

-  30 minutes or less
-  60 minutes or less
-  More than 1 hour