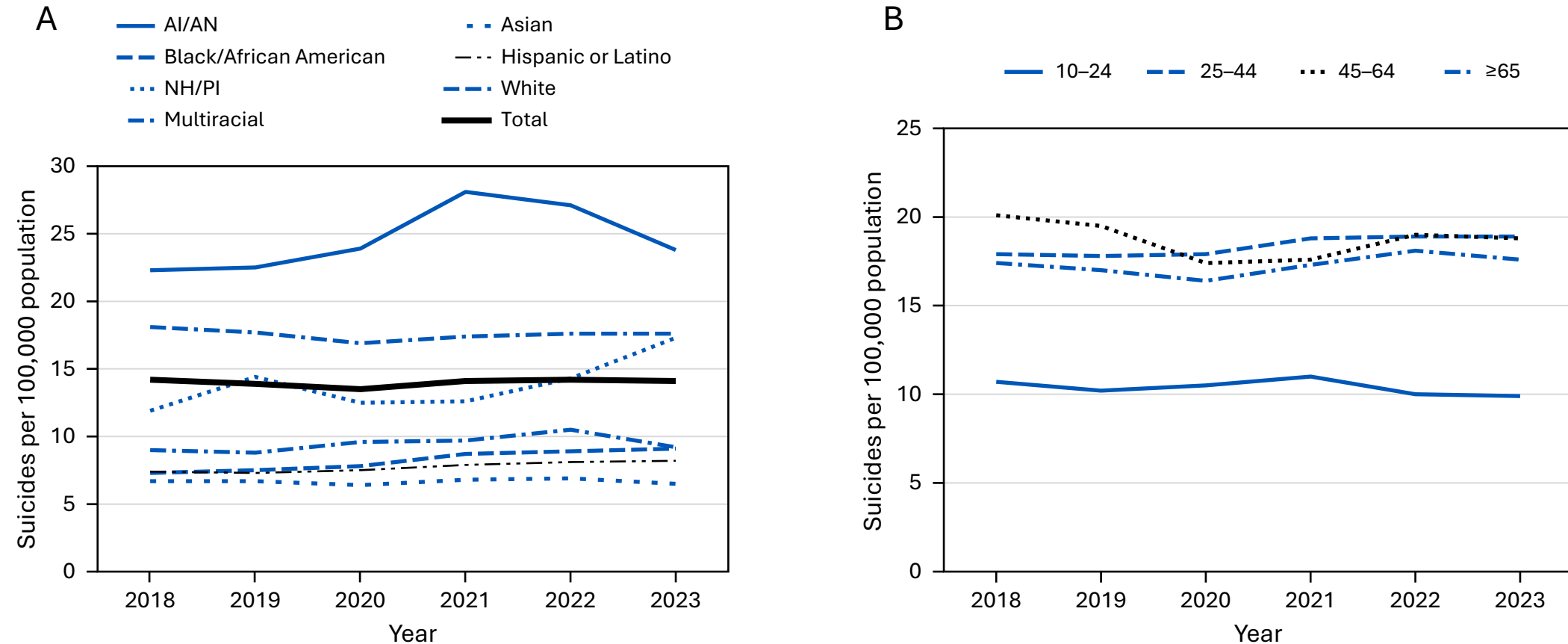


SUPPLEMENTARY FIGURE. Suicide* rates, by race and ethnicity† (A)[§] and age group (B) — United States 2018–2023



Abbreviations: AI/AN = American Indian or Alaska Native; NH/PI = Native Hawaiian or Pacific Islander.

* Suicide deaths were identified by using International Classification of Diseases, Tenth Revision underlying cause-of-death codes U03, X60–X84, and Y87.0.

† Hispanic or Latino (Hispanic) ethnicity includes persons of any race. Racial groups exclude persons of Hispanic ethnicity. Persons with unknown ethnicity are excluded from race and ethnicity groups but are included in the overall total. Data for Hispanic origin should be interpreted with caution; studies comparing Hispanic origin on death certificates and on U.S. Census Bureau surveys have shown inconsistent reporting on Hispanic ethnicity. Potential racial misclassification might lead to underestimates for certain categories, primarily American Indian, Alaska Native, Asian, and other Pacific Islander decedents (https://www.cdc.gov/nchs/data/series/sr_02/sr02_172.pdf). Single-race estimates are presented and might not be comparable to earlier years produced by bridging multiple races to a single race choice. Hispanic ethnicity includes persons of any race.

§ Age-adjusted rates (suicides per 100,000 population) were calculated using the direct method and the 2000 U.S. standard population.