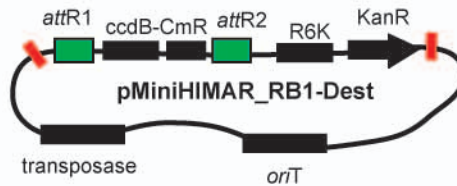
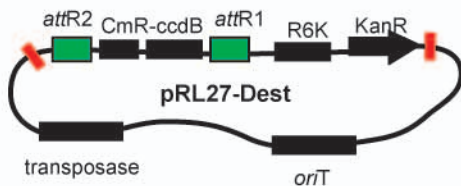


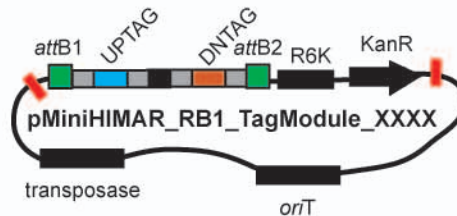
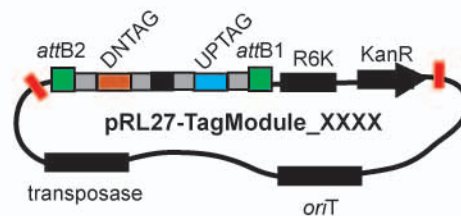
X

X

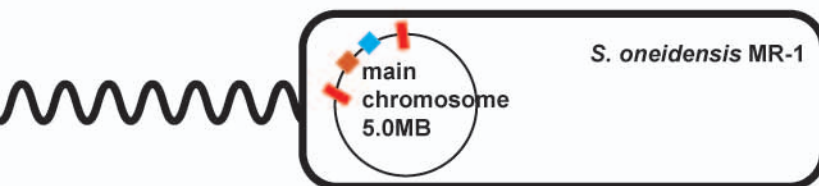
Gateway LR reaction



Transform into *E. coli* conjugation donor



Conjugate with *S. oneidensis* MR-1



Map transposon insertion location and TagModule identity by arbitrary PCR and sequencing.

Archive all strains as single, clonal events.

Thousands of strains, each carrying a unique TagModule, can be pooled together for parallel analysis.