



Effects of longwall-induced stress and deformation on the stability and mechanical integrity of shale gas wells drilled through a longwall abutment pillar



Daniel W.H. Su

National Institute for Occupational Safety and Health, Bruceton 15236, PA, USA

ARTICLE INFO

Article history:

Received 15 July 2016

Received in revised form 8 August 2016

Accepted 10 September 2016

Available online 24 December 2016

Keywords:

Gas well

Casing

Abutment pillar

Stability

Safety and health

Instrumentation

Numerical simulation

ABSTRACT

This paper presents the results of a comprehensive study conducted by CONSOL Energy, Marcellus Shale Coalition, and Pennsylvania Coal Association to evaluate the effects of longwall-induced subsurface deformations on the mechanical integrity of shale gas wells drilled over a longwall abutment pillar. The primary objective is to demonstrate that a properly constructed gas well in a standard longwall abutment pillar can maintain mechanical integrity during and after mining operations. A study site was selected over a southwestern Pennsylvania coal mine, which extracts 457-m-wide longwall faces under about 183 m of cover. Four test wells and four monitoring wells were drilled and installed over a 38-m by 84-m centers abutment pillar. In addition to the test wells and monitoring wells, surface subsidence measurements and underground coal pillar pressure measurements were conducted as the 457-m-wide longwall panels on the south and north sides of the abutment pillar were mined by. To evaluate the resulting coal protection casing profile and lateral displacement, three separate 60-arm caliper surveys were conducted. This research represents a very important step and initiative to utilize the knowledge and science obtained from mining research to improve miner and public safety as well as the safety and health of the oil and gas industries.

© 2016 Published by Elsevier B.V. on behalf of China University of Mining & Technology. This is an open access article under the CC BY-NC-ND license (<http://creativecommons.org/licenses/by-nc-nd/4.0/>).

1. Introduction

Due to a recent shale gas boom, one which may enable the United States to become more energy independent, approximately 800 gas wells have been drilled through active and future coal reserves in Pennsylvania, West Virginia, Ohio, Virginia, and Tennessee over the past 10 years. These shale gas wells have penetrated many coal seams, such as the Sewickley, Pittsburgh, upper/lower Freeport, and upper/middle/lower Kittanning seams, which are either actively mined or planned to be mined in the near future. Also, these shale gas wells, whether tapped into the Marcellus or Utica formations, contain very high (approximately 2.41–20.7 MPa) gas pressure. Longwall and high-extraction-induced stresses and strata deformations could induce high stresses and deformations in the shale gas well casings, which may seriously compromise the mechanical integrity of the production, intermediate and coal protection casings. Such a compromise of mechanical integrity of the well casings would potentially introduce high-pressure, explosive gas into underground mine workings or into surface dwellings

and water wells, which could seriously jeopardize underground miners as well as public safety and health. Plugging these gas wells ahead of mining not only incurs substantial cost for the mining operators, it also represents substantial loss of income for gas operators.

In 2012, upon recognizing that the 1957 Pennsylvania Gas Well Pillar Regulations were formulated without data from modern-day longwall mining, the Pennsylvania Department of Environmental Protection (PA DEP) initiated a call for research to update the outdated regulations, which have been widely used by the Mine Safety and Health Administration (MSHA) and other states to govern gas well pillar stability issues over the past 60 years. In response to this call for research, the John T. Boyd Mining and Geological Consultants Company was commissioned to conduct an analytical study to produce a preliminary safeguard distance table [1,2]. This table, by the nature of its overly simplified analytical approach, cannot take into account detailed subsurface strata deformations. In 2013 and 2014, a study was conducted in a southwestern Pennsylvania coal mine under shallow cover by the coal and gas industries, which focused primarily on the effect of strata deformations on the well casings above the mining horizon. This paper presents the results of a suite of detailed 3D finite element analyses and some

E-mail address: kxz4@cdc.gov

of the field instrumentation results (about 75% of the field instrumentation results are not able to be included pending consent from the project partners).

2. Site description and geotechnical instrumentations

The study site was located over a southwestern Pennsylvania coal mine employing longwall panels to extract from the Pittsburgh Seam. A three-entry longwall gate road system of 18.3 m × 38.1 m centers was employed at the mine. Fig. 1 illustrates the layout of the longwall panels, which are oriented approximately in the east-west direction. Fig. 1 also shows the locations of the surface and subsurface instrumentation layout, which includes four test wells designed similarly to real shale gas wells, three subsurface inclinom stations and one subsurface extensom station. Test wells were drilled to a depth of 196 m, which was about 12.2 m below the Pittsburgh Seam. The inclinom holes were drilled to different depths below the surface (0–61, 61–122 and 122–183 m), while the extensom hole was drilled to 192 m below the surface. In addition to the surface subsidence measurements, underground instrumentation consisting of bore-hole pressure cells (BPCs) and entry convergence meters was also installed to corroborate surface responses with subsurface and underground responses to provide a clear picture of strata reaction to longwall mining. The first panel mined by the test site in August 2013 and the second panel mined by the test site in May 2014.

3. Site geology

The overburden depth at the test site was about 183 m. Fig. 2 shows the detailed geology at the test site, which was interpreted by correlating a test site gamma log and a nearby core hole. Clearly, the overburden geology was a typical Pittsburgh Seam geology and was highlighted by many strong and weak rock interfaces, which were demonstrated to have major influences on longwall-induced stresses and deformations from ground control research conducted over the past 30 years.

4. 3D finite element simulations

Prior to the instrumentation program, which commenced in June 2013, a series of ABAQUS 3D finite element simulations were conducted and analyzed to evaluate the effect of longwall excavations on the induced stresses and deformations within the gate road abutment pillars and their effects on the stability of shale gas wells drilled through the abutment pillars. Specifically, the concerns centered on the stability of the production, intermediate and coal protection casings, since any stability compromise of these casings may potentially introduce high-pressure shale gas into mine workings, which would seriously jeopardize under-

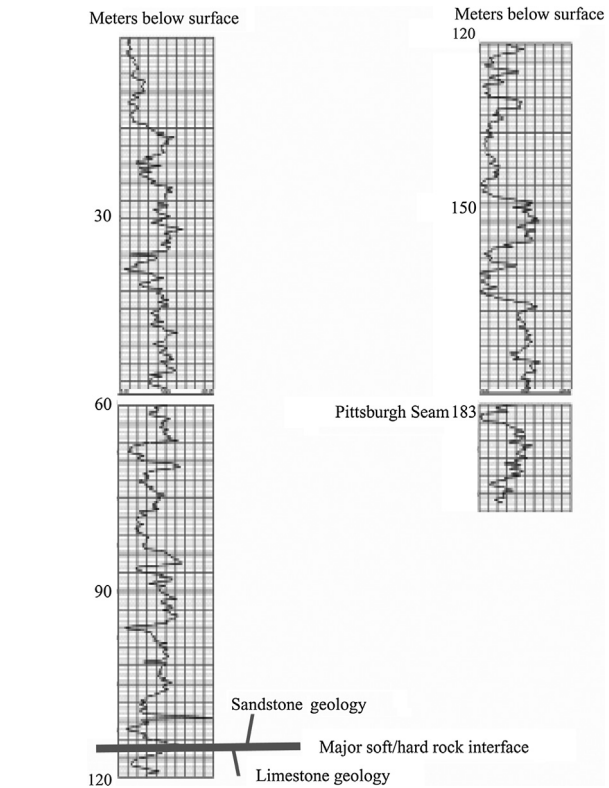


Fig. 2. Test site overburden geology as interpreted from an on-site gamma log and a nearby core hole.

ground miner safety and health. The ABAQUS finite element program was selected over a number of numerical models, since it has been calibrated and verified with field data from the Pittsburgh, Pocahontas #3, and Illinois #6 seams over the past 25 years.

5. Results of geotechnical instrumentation and 3D finite element analyses

5.1. Geotechnical instrumentation

Surface subsidence surveys were conducted as the first panel approached within 305, 153, 61, and 0 m of the test site, and 61, 153, and 305 m past the test site, which occurred in August 2013. A similar survey schedule was also implemented for mining of the second panel, and the survey was completed in June 2014. The inclinom and extensom readings were recorded continuously over the same time frame. Three 60-arm caliper surveys were conducted to evaluate the casing profile of the four test wells, and they were conducted one month prior to mining of the first panel, one month after mining of the first panel, and one month after mining of the second panel.

Fig. 3 shows the results of surface subsidence and surface horizontal movement measurements after completion of the first and second panels, respectively. Fig. 4 illustrates the plastic casing profile of one of the inclinom holes, which indicates the magnitude of movement after the first and second panel extractions. Results from the extensom monitoring are not presented, since due to the relatively shallow overburden, less than 1.3 cm of vertical movement was detected. Results from the 60-arm caliper surveys are not presented in this paper pending consent from the project partners, although the well casing profiles mimic the inclinom casing profile shown in Fig. 4.

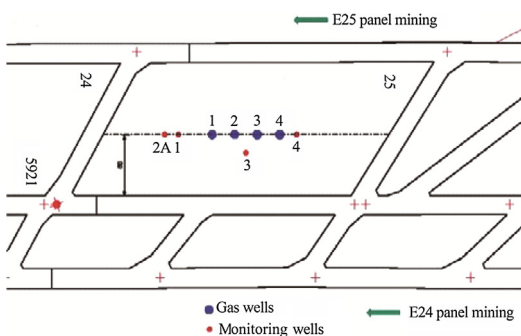


Fig. 1. Surface instrumentation layout at the test site.

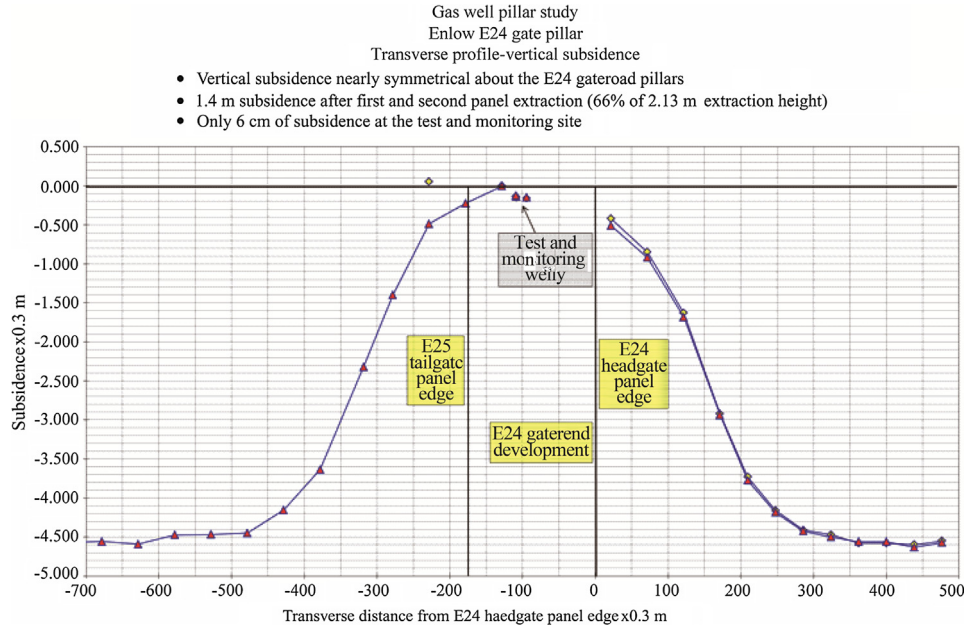


Fig. 3. Surface subsidence after first and second panel extraction.

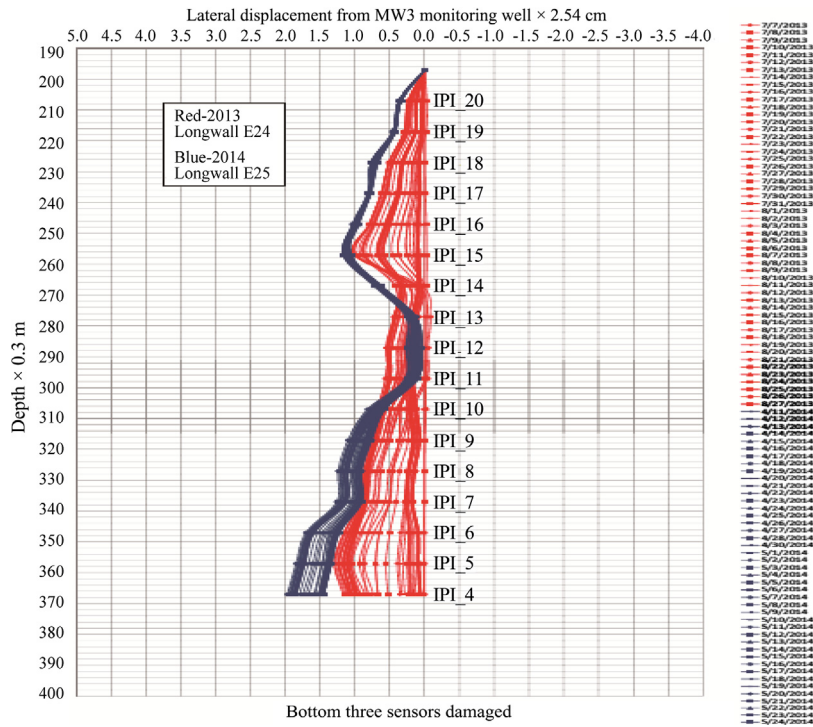


Fig. 4. Lateral displacement observed in one of the IPI monitoring wells.

5.2. 3D finite element analyses

A number of 3D ABAQUS finite element models (Fig. 5) were constructed in April 2013 to evaluate the potential effects of longwall-induced stresses and deformations on the stability of shale gas well casings drilled through longwall abutment pillars. The overburden geology used for the ABAQUS models at this early stage was based on a core hole about 213 m north of the test site. Upon test hole drilling at the test site in July 2013, a detailed gamma log was obtained and the ABAQUS models were rerun

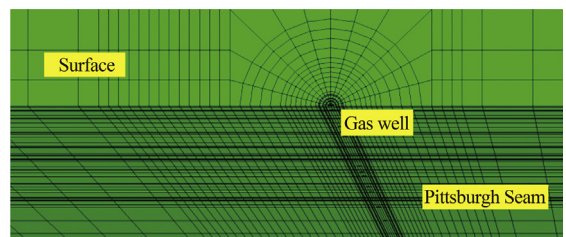


Fig. 5. 3D gas well finite element model.

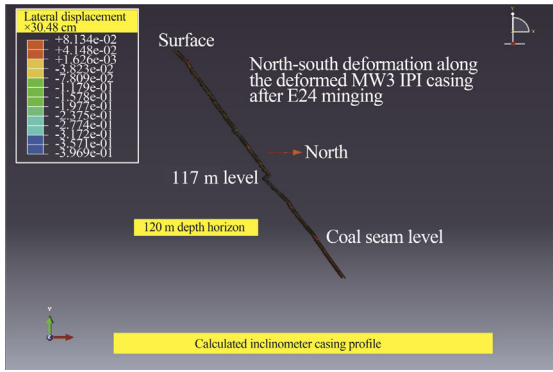


Fig. 6. Calculated inclinometer casing profile.

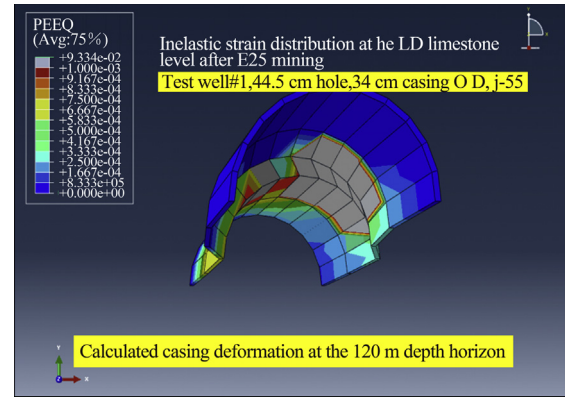


Fig. 8. Zoom-in ABAQUS plot of the 120 m-depth deformation.

using the interpreted overburden geology from the test site (Fig. 2). Fig. 6 shows the ABAQUS-calculated profile of the plastic inclinometer casing, which closely resembles the measured profile in Fig. 4. Fig. 7 shows a calculated profile of one of the test wells, which has about an 85% match with the 60-arm caliper log measured profile.

Table 1 tabulates the comparisons of measured and ABAQUS-calculated surface subsidence and underground pillar pressure measurements. Clearly, with the detailed geologic section and with accurate modeling of the overburden interface shearing, the ABAQUS-calculated surface subsidence and underground pillar pressure increases are in excellent agreement with measured surface subsidence and pillar pressure increases. On the other hand, the ABAQUS-calculated inclinometer and well casing deformations are in reasonable agreement with measured inclinometer and well casing deformations. Fig. 8 shows a zoom-in ABAQUS deformation plot at 120 m below the surface, where maximum lateral shearing is present, closely resembling the TVISION image (not presented) from the 60-arm caliper survey at the same location.

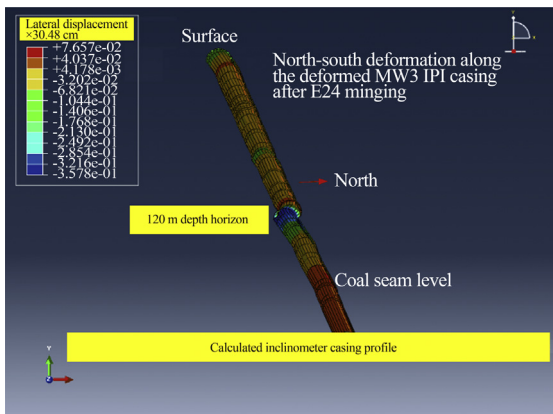


Fig. 7. Calculated test well casing profile.

6. Potential of employing the field-instrumentation-calibrated ABAQUS model to evaluate well casing stability under different overburden geology and well casing design

Since the instrumentation site described above was confined to a given overburden depth and its associated geology, two rather intriguing questions arise and need to be answered. They are: (a) will gas wells drilled into mines with deep cover behave similarly? and (b) are there any casing and cementing alternatives which can be employed to mitigate or eliminate the effect of longwall-induced stresses and deformations on the mechanical integrity of gas well casings? In this paper, the 3D ABAQUS models, which had been calibrated with the field instrumentation results, were employed to evaluate the effects of overburden depth and casing and cementing alternatives.

6.1. Effect of overburden depth

It is well known that overburden depth and its associated geology have significant influence on longwall-induced stresses and deformations. The calibrated ABAQUS 3D models were employed to evaluate the effect of deep overburden on the longwall-induced stresses and deformations and their effects on gas well casings. Fig. 9 shows that, under deep overburden, smaller strata deformation is present in the overburden above the mining horizon, while higher pressure and deformation are present at and below the coal seam, which results in a larger presence of plastic strain in the casings at the seam level (Fig. 10).

6.2. Effect of casing and cementing designs

To evaluate the effect of alternative casing and cementing designs on the coupling of longwall-induced stresses/deformations and casings, a number of 3D ABAQUS models were constructed and analyzed. Results from the analyses indicate that leaving the intermediate and production casings un-grouted from 15.3 m below the

Table 1 Comparisons of measured and ABAQUS-calculated surface subsidence and underground coal pillar pressure increase.

Center panel surface subsidence	Well site vertical subsidence	Well site horizontal movement	Coal pillar pressure
<i>(a) Measured</i>			
1.4 m after first panel	<6 cm	<6 cm	2.6 MPa after first panel
1.4 m after second panel			5.74 + MPa after second panel
<i>(b) ABAQUS computed</i>			
1.404 m after first panel	6.23 cm	4.0 cm	3.23 MPa after first panel
1.408 m after second panel			6.32 MPa after second panel

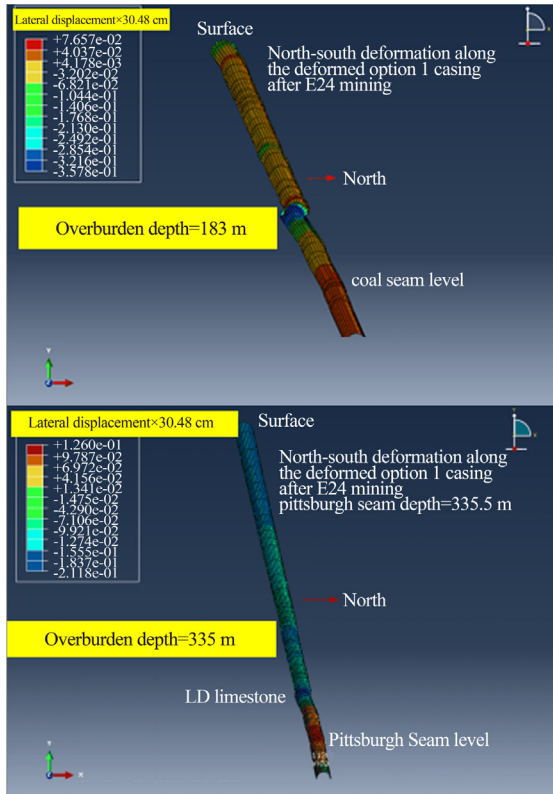


Fig. 9. Effect of overburden depth on casing deformation.

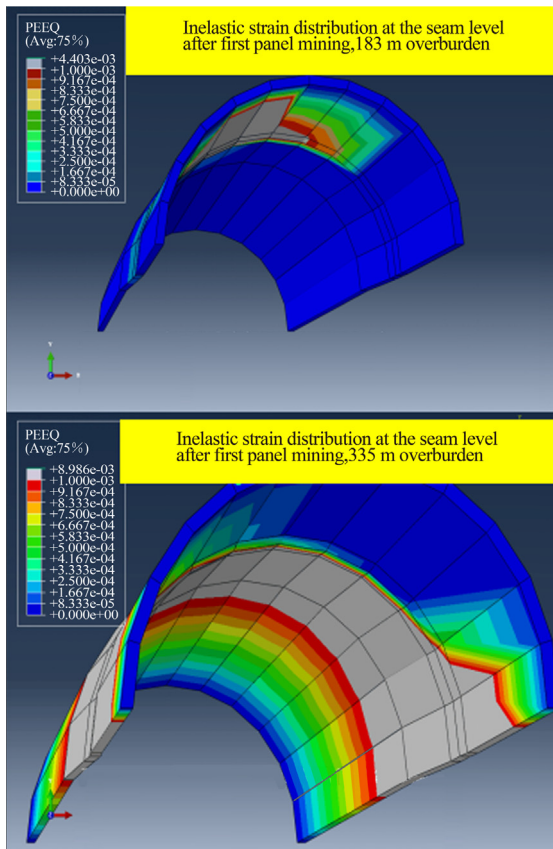


Fig. 10. Effect of overburden depth on casing strain at the seam level.

seam to the surface will effectively uncouple the ground stresses/deformations and the casings. In other words, little to no deformation and no induced strain is present in the intermediate and production casings when they are not cemented all the way to the surface.

7. Discussion

The field instrumentation as well as the numerical modeling results presented in this paper are consistent with a few previous attempts to characterize unconventional subsurface movements along the bedding planes [3–7]. Conventional subsidence engineering typically emphasizes the surface vertical displacement, surface horizontal displacement, surface horizontal strain, curvature and angle of draw induced by longwall or other high-extraction mining. Its primary objective is to assess the impact of high-extraction mining on surface structures such as buildings, water bodies, bridges, dams, streams and highways, although a few studies were designed to study the impact on shallow water wells. Vintage oil and gas wells, which are typically low pressure and which are near the end of their life cycles, are typically bought and plugged prior to longwall mining. However, due to the recent shale gas boom, many high-pressure gas well have been drilled over the past 10 years and these wells are at the beginning of their life cycles. In addition, these shale gas wells have different structures and possess much higher economic values compared to the vintage oil and gas wells. Therefore, it is imperative to understand the importance of unconventional subsurface stresses and deformations induced by longwall or other high extraction mining similar to those described in this paper.

Unfortunately, longwall-induced subsurface stresses and deformations are site-specific and more study is needed to completely characterize the induced stresses and deformations under different mining depths and geology. It is important to note that the 10.2 cm unconventional subsurface movement cited in this paper is not large enough to impact the mechanical integrity of the coal protection casing, as indicated by the consistent presence of water in the four test wells up to 122 m above the mining horizon.

Since about 800 shale gas wells have been drilled recently ahead of mining in the Pittsburgh coalfield, and since all casings of these wells are fully cemented to the surface, depending on the distance to the edge of future longwall extraction, potential casing deformation may be present. To avoid sterilizing either coal or gas reserve, these wells need to be temporarily plugged before mining. Upon completion of mining, temporary plugs can be removed and well integrity must be examined and confirmed before returning the well to production. On the other hand, for shale gas wells planned to be drilled in the future, as described in the previous section of this paper, alternative casing and cementing designs need to be considered to mitigate or eliminate potential casing deformations.

8. Conclusions

This paper demonstrates that the 3D ABAQUS finite element models, with accurate geologic information and gob behavior, can provide accurate prediction of surface subsidence and underground coal pillar pressure increases. The 3D ABAQUS models can also provide reasonable prediction of rather complex subsurface strata deformations. This is not to say that the 3D ABAQUS model is the only model capable of providing such accurate predictions; rather, results from this research suggest that numerical models can be used to predict longwall-induced stresses and deformations with reasonable accuracy, as long as they incorporate

detailed overburden geology and important strata interface and gob behaviors.

References

- [1] Commonwealth of Pennsylvania, department of mines and mineral industries, oil and gas division. Joint coal and gas committee, gas well pillar study. Harrisburg, Pennsylvania; 1957.
- [2] Scovazzo VA, Moran RP. Industry research into gas and oil well protective coal pillar design. In: Proceedings of the 32nd international conference on ground control in mining. Morgantown, West Virginia: West Virginia University; 2013. p. 164–8.
- [3] Su WH, Hasenfus GJ. Field measurements of overburden and chain pillar response to longwall mining. In: Proceedings of the 6th international conference on ground control in mining. Morgantown, West Virginia: West Virginia University; 1987. p. 156–66.
- [4] Coulthard MA, Dutton AJ. Numerical modeling of subsidence induced by underground coal mining. In: Proceedings of 29th U.S. symposium on rock mechanics. Tucson, Arizona; 1988. p. 529–36.
- [5] Hasenfus GJ, Johnson KL, Su WH. A hydrogeomechanical study of overburden aquifer response to longwall mining. In: Proceedings of 7th international conference on ground control in mining. Morgantown, WV; 1988. p. 149–62.
- [6] Su WH. Finite Element modeling of subsidence induced by underground coal mining: the influence of material nonlinearity and shearing along existing planes of weakness. In: Proceedings of 10th international conference on ground control in mining. Morgantown, West Virginia; 1991. p. 287–300.
- [7] Hasenfus GJ, Su WH. A comprehensive integrated approach for longwall development design. In: Proceedings of first workshop on coal pillar mechanics and design. Santa Fe, New Mexico; 1992. p. 225–37.