

RESEARCH ARTICLE

Plasminogenuria is associated with podocyte injury, edema, and kidney dysfunction in incident glomerular disease

Marc A. Eggerman¹ | Jenny S. Wong¹ | Tian Runxia² |
 Gohar Mosoyan¹ | Kinsuk Chauhan¹ | Joselyn Reyes-Bahamonde¹ |
 Nanditha Anandakrishnan¹ | Nicholas J. Wong¹ | Emilia Bagiella³ | Fadi Salem^{4,5} |
 Kristin Meliambro¹ | Hong Li⁶ | Evren U. Azeloglu^{1,7} | Steven G. Coca¹ |
 Kirk N. Campbell¹ | Leopoldo Raij²

¹Division of Nephrology, Department of Medicine, Icahn School of Medicine at Mount Sinai, New York, NY, USA

²Katz Family Division of Nephrology and Hypertension, Department of Medicine, University of Miami Miller School of Medicine, Miami, FL, USA

³Center for Biostatistics, Department of Population Health Science and Policy, Icahn School of Medicine at Mount Sinai, New York, NY, USA

⁴Department of Pathology, Icahn School of Medicine at Mount Sinai, New York, NY, USA

⁵Department of Medicine, Icahn School of Medicine at Mount Sinai, New York, NY, USA

⁶Department of Microbiology, Biochemistry and Molecular Genetics, Rutgers New Jersey Medical School, Newark, NJ, USA

⁷Department of Pharmacological Sciences, Icahn School of Medicine at Mount Sinai, New York, NY, USA

Correspondence

Kirk N. Campbell, Division of Nephrology, Department of Medicine, Icahn School of Medicine at Mount Sinai, 1 Gustave Levy Place, Box 1243, New York, NY, USA.
 Email: kirk.campbell@mssm.edu

Abstract

Urinary plasminogen/plasmin, or plasmin (ogen) uria, has been demonstrated in proteinuric patients and exposure of cultured podocytes to plasminogen results in injury via oxidative stress pathways. A causative role for plasmin (ogen) as a “second hit” in kidney disease progression has yet to have been demonstrated in vivo. Additionally, association between plasmin (ogen) uria and kidney function in glomerular diseases remains unclear. We performed comparative studies in a puromycin aminonucleoside (PAN) nephropathy rat model treated with amiloride, an inhibitor of plasminogen activation, and measured changes in plasmin (ogen) uria. In a glomerular disease biorepository cohort (n = 128), we measured time-of-biopsy albuminuria, proteinuria, and plasmin (ogen) uria for correlations with kidney outcomes. In cultured human podocytes, plasminogen treatment was associated with decreased focal adhesion marker expression with rescue by amiloride. Increased glomerular plasmin (ogen) was found in PAN rats and focal segmental glomerulosclerosis (FSGS) patients. PAN nephropathy was associated with increases in plasmin (ogen) uria and proteinuria. Amiloride was protective against PAN-induced glomerular injury, reducing CD36 scavenger receptor expression and oxidative stress. In patients, we found associations between plasmin (ogen) uria and edema status as well as eGFR. Our study demonstrates a role for plasmin (ogen)-induced podocyte injury in the PAN nephropathy model, with amiloride having podocyte-protective properties. In one of the largest glomerular disease cohorts to study plasminogen, we validated previous findings while suggesting a potentially novel relationship between plasmin (ogen) uria and estimated glomerular filtration rate (eGFR). Together, these findings suggest a role for plasmin (ogen)

Abbreviations: 8-OxoG, 8-oxoguanine; ACEi, ACE inhibitor; AMIL, amiloride; ARB, angiotensin II receptor blockers; CASP3, caspase 3; CD36, cluster of differentiation 36; CKD, chronic kidney disease; Cr, creatinine; eGFR, estimated glomerular filtration rate; eNaC, amiloride-sensitive sodium channel; ESRD, end stage renal disease; FSGS, focal segmental glomerulosclerosis; HIVAN, HIV-associated nephropathy; iTRAQ, isobaric tags for relative and absolute quantitation; NOX2/4, NADPH oxidase 2/4; NPHS1, nephrin; oxLDL, oxidized low-density lipoprotein; PAN, puromycin aminonucleoside; PLG-RKT, plasminogen receptor with a C-terminal lysine; RASi, renin-angiotensin system inhibitors; ROS, reactive oxygen species; SYNPO, synaptopodin; tPA, tissue plasminogen activator; uPA, urokinase plasminogen activator; uPAR, uPA receptor.

Leopoldo Raij, Katz Family Division of Nephrology and Hypertension, Department of Medicine, University of Miami Miller School of Medicine, 1120 NW 14th Street, Suite 809, Miami, FL, USA.
Email: lraij@med.miami.edu

Funding information

HHS | NIH | National Institute of Diabetes and Digestive and Kidney Diseases (NIDDK), Grant/Award Number: DK103022, DK122807, R01DK112258, U01DK10692, R01DK115562 and R01DK103022; HHS | CDC | National Institute for Occupational Safety and Health (NIOSH), Grant/Award Number: U01OH011326; HHS | NIH | National Heart, Lung, and Blood Institute (NHLBI), Grant/Award Number: R01HL85757; Department of the Army, Grant/Award Number: PR191906P1; South Florida Veterans Affairs Foundation For Research and Education (SFVAFRE); NIH, Grant/Award Number: NS046593 and 1S10OD025047-01

in mediating glomerular injury and as a viable targetable biomarker for podocyte-sparing treatments.

KEYWORDS

amiloride, edema, eGFR, glomerular, plasminogen, podocytes

1 | INTRODUCTION

Clinically it is often unclear whether progression of glomerular injury is driven strictly by the persistence of the initial insult and/or by a superimposed injurious process, a so-called “second hit”.^{1,2} Human and experimental rodent studies have demonstrated that persistent non-selective proteinuria is a major risk factor of chronic kidney disease (CKD) progression and is accompanied by abnormal excretion of urinary serine proteases of which plasminogen/plasmin is a principal component.³⁻⁷ Prior studies of urinary plasminogen/plasmin—termed plasmin (ogen) uria—have focused on its activation of the amiloride-sensitive sodium channel ENaC in the distal nephron.⁸⁻¹² In these studies, the degree of plasmin (ogen) uria was shown to be clinically associated with volume overload in patients with CKD of diverse etiologies, though most reports have concentrated on a limited number of subjects and/or diagnoses.^{3,4,13-16} However, clinical studies have yet to evaluate whether chronic aberrant filtration of plasminogen may also act proximally at the level of the glomerulus by promoting injury to podocytes, critical cells that help maintain the permeability and selectivity of the filtration barrier.¹⁷⁻²²

In our prior work with cultured human podocytes, we reported that podocytes express key mediators of the plasmin (ogen) system—urokinase plasminogen activator (uPA), uPA receptor (uPAR), tissue plasminogen activator (tPA)—and the transmembrane plasminogen receptor (PLG-RKT), which was previously shown to co-localize with uPA and facilitate the activation of plasminogen to plasmin by securing

it to the cell membrane.²³ After plasmin is cell bound, it is protected from inactivation by α 2-antiplasmin, which leads to enhanced pericellular plasmin concentrations.²⁴⁻²⁶ Once activated, plasmin has pleiotropic actions. Through its proteolytic activity, plasmin promotes anoikis, a form of cell death induced by cell detachment from the extracellular membrane.²⁴ Alternatively, plasmin can stimulate cellular cytokines and ROS production through non-proteolytic effects.²⁷

In our studies with cultured podocytes, we showed for the first time that plasminogen, after podocyte binding and conversion to plasmin, induces oxidative stress-mediated podocyte injury directly by activation of NADPH oxidase 2/4 (NOX2/4) and the scavenger receptor CD36.²³ Of note, the ENaC inhibitor amiloride, with well-established off target effects inhibiting uPA-mediated conversion of plasminogen to plasmin^{6,28,29} arrested the progression of plasmin (ogen)-mediated podocyte injury in vitro.²³ Based on these overall findings, we postulated that in proteinuric subjects, excessive trans-glomerular plasminogen is converted to plasmin by the podocyte uPA-PLG-RKT system and that persistent exposure to plasmin serves as a “second hit” in glomerular diseases driving CKD progression independent of the initial insult.

To begin to address this hypothesis with “proof of principle” studies, we explored in vitro podocyte morphologic changes induced by plasminogen treatment and tested the role of plasminogen in puromycin aminonucleoside (PAN) nephropathy, a well-established in vivo model of podocyte injury. Additionally, we have investigated cross-sectional associations between plasmin (ogen) uria and renal disease characteristics in one of the largest cohorts of glomerular

diseases to study plasmin (ogen). Overall, we present strong supportive evidence for a causative role of the plasmin (ogen)-system in podocyte injury, with amiloride having glomerular protective properties. Our findings also advance clinical correlations of plasmin (ogen) uria as a biomarker of glomerular injury in proteinuric patients. Importantly, given such a function, the plasmin (ogen) pathway represents an attractive target for the development of mechanistic-based novel therapeutic interventions.

2 | MATERIALS AND METHODS

2.1 | Human podocyte culture

Human podocytes initially generated by MA Saleem Children's Renal Unit and Academic Renal Unit, University of Bristol, UK³⁰ were generously provided by S. Merscher and A. Fornoni, University of Miami. Briefly, human podocytes were cultured and differentiated in RPMI 1640 culture medium containing 10% FBS, 1% penicillin/streptomycin and 1% ITS.³⁰ The immortalized normal human podocytes were propagated at 33°C and then thermoshifted for differentiation for 10–14 days at 37°C. Terminally differentiated podocytes were starved in RPMI 1640 medium containing 0.2% FBS, 1% penicillin/streptomycin and 1% ITS overnight before the experiments were performed. Recombinant human plasminogen was obtained from Enzyme Research Laboratories. Amiloride was purchased from MilliporeSigma.

2.2 | Total internal reflectance fluorescence (TIRF) microscopy

TIRF microscopy was performed as previously described³¹ to obtain a detailed assessment of focal adhesion parameters using a Leica DMI8 Infinity TIRF microscope and LASX (v.3.6). Focal adhesion morphometrics were assessed using immunofluorescence staining of paxillin (mouse anti-paxillin, BD Biosciences, Cat /# 610620), with an evanescent field depth of 75 nm, imaged under PBS supplemented with ProLong Live antifade agent (Thermo Fisher; Cat #P36975) using a 1.4NA Leica 63X oil TIRF objective at 30°C. To determine per cell morphometric values, simultaneous widefield images of the actin cytoskeleton and nuclei were obtained using Rhodamine-phalloidin (Thermo Fisher; Cat #R415) and DAPI (MD Biomedicals, Cat #0215757401), respectively. Separate widefield images captured with a 0.5NA 20X air objective were used to determine cellular and nuclear size. All images were systematically processed in an unbiased, blinded, semiautomated manner, and quantitatively analyzed following our

high-content image analysis (HCA) segmentation guidelines outlined previously.³²

2.3 | Animal studies

PAN nephropathy was induced as per established protocols.^{33,34} Briefly, 6–8 week-old male Wistar rats were intravenously injected either with either PAN (n = 7; single IV 100 mg/kg) or PAN + amiloride (n = 8; PAN + 0.5 mmol/L amiloride). PBS-injected age-matched rats (n = 6) served as controls. Amiloride was administered in drinking water starting at the time of PAN or PBS injection. Animals were euthanized 7–8 days after PAN injection. Kidneys were removed and glomeruli were isolated by serial sieving in ice-cold PBS. All animal protocols were approved by IACUC at the Icahn School of Medicine at Mount Sinai and the Miller School of Medicine at University of Miami. Morphometric/histologic analyses were performed by investigators blinded to experimental group allocation.

2.4 | Study participants

Subjects with glomerular disease biopsy-proven diagnoses (diabetic kidney disease, IgA, membranous nephropathy; lupus nephritis, FSGS, and arterionephrosclerosis) were recruited and provided written informed consent at enrollment, as per the approved Institutional Review Board (IRB). Freshly voided urine samples were collected and spun at 3000 rpm for 15 minutes. Supernatants were aliquoted and stored at –80°C prior to use. All clinical data were collected from electronic medical records. Frozen sections from archived human biopsy material were obtained from the Icahn School of Medicine at Mount Sinai under an IRB approved protocol. All biopsies were clinically indicated, and only extra tissue not required for diagnostic purposes was permitted for research use.

2.5 | Urinary biomarker determination

Rat urine plasmin (ogen) were measured using commercial kits (E-25PMG; ICLLAB, Portland, OR, USA), as per protocol. Rat urine creatinine was measured according to the manufacturer's protocol (Item No: 500701; Cayman Chemicals). Total rat urine protein was determined using BioRad Protein Assay reagents (Item Nos: 500-0113, 500-0114, 500-0115). For human samples, plasmin (ogen) from urine at time of biopsy was measured using a commercial kit (IHPLGKT-TOT; Innovative Research, Novi, MI, USA), as per protocol. Concentrations were estimated from a standard curve and normalized by urine creatinine. All

other patient values including creatinine were determined by the chemistry laboratory at Icahn School of Medicine at Mount Sinai.

2.6 | Western blotting, immunofluorescence, and immunohistochemistry

For immunoblotting, samples were processed by standard protocol. Briefly, tissue was homogenized and protein quantified by Bradford assay. Equal amounts of protein were loaded and separated by SDS-PAGE and transferred to nitrocellulose. Data were normalized by β -actin and expressed as fold-change relative to control. Anti-synpo was a gift from Dr Peter Mundel (MGH, Boston, MA, USA), all other western blot primary antibodies were purchased from Santa Cruz (Dallas, TX, USA). For immunostaining, sections were cut on slides which were blocked and incubated with the appropriate primary and secondary antibodies, as per standard protocol. Secondary Alexa conjugated antibodies were purchased from Thermo Fisher (Life Technologies, Carlsbad, CA, USA). Nuclei were labeled with DAPI. Anti-Paxillin was purchased from Thermo Fisher; anti-CD36 from Santa Cruz; anti-8-Oxo-G from Abcam (Cambridge, MA). Standard DAB IHC was performed at Mount Sinai Department of Pathology, using Ventana Discovery Ultra IHC/ISH research platform. Antigen retrieval was achieved with proprietary CC1 solution (Roche Diagnostics, Indianapolis, IN, USA) for 1 hour. Primary antibody against plasmin (ogen), which was diluted in PBS 1:400, was manually applied and incubated for 1 hour, followed by secondary anti-rabbit antibody (Roche Diagnostics). Counterstain was DAB.

2.7 | Proteomics

Isobaric labeled shotgun proteomics was performed as previously described.³³ Briefly, samples were lysed in urea with protease and phosphatase inhibitors and proteins were tryptically digested overnight. Peptides were labeled using iTRAQ isobaric tags (AB Sciex, Framingham, MA, USA) per manufacturer's instructions and combined peptides were desalted and fractionated. Liquid chromatography with tandem mass spectrometry (LC-MS/MS) was performed using an UltiMate 3000 LC System and an Orbitrap mass spectrometer (Thermo Scientific, Waltham, MA, USA). MS/MS spectra were analyzed using Mascot and Sequest search engines with the Proteome Discoverer platform. A false discovery rate cutoff of 0.01 was used to limit the forward/reverse database searches that yielded peptide identification with a 95% confidence interval. Relative quantitation was performed on

the Scaffold platform using the log2 values of iTRAQ label ratios.

2.8 | Clinical outcomes and statistical analysis

The primary outcomes were edema status (yes/no) and eGFR at time of biopsy. Edema status was extracted from the notes in the EMR. All urinary markers (protein/creatinine, albumin/creatinine, plasminogen/creatinine) were log-transformed to approximate normal distribution. Correlations between log-transformed biomarkers and relevant characteristics were assessed using Spearman's partial correlations. Boxplots that denoted the median, IQR, minimum, and maximum were used to visualize the distribution of each urinary biomarker with edema status yes vs. no and eGFR <60 vs. ≥ 60 . The association for each log-transformed biomarker with the kidney-related clinical characteristic was evaluated by univariable and multivariable logistic regression for edema status and with univariable and multivariable linear regression for eGFR (adjusted for age, gender, race/ethnicity, RASi or diuretic use, and eGFR, as appropriate) using SAS University Edition (Cary, NC).

3 | RESULTS

3.1 | Plasminogen reduces podocyte focal adhesion marker expression

To further define the cell biological consequences of plasminogen-induced podocyte injury, we treated immortalized human podocytes with plasminogen versus control and performed F-actin (phalloidin), focal adhesion (paxillin), and nuclear (DAPI) staining followed by confocal microscopy. We found that plasminogen treatment (1 μ M) reduced podocyte focal adhesion marker expression (Figure 1). Conversely, focal adhesion marker expression was preserved with treatment of podocytes with plasminogen and amiloride together (Figure 1). Notably podocyte F-actin expression was not reduced by plasminogen treatment. We then utilized HCA of TIRF images to perform a detailed assessment of focal adhesion parameters of human podocytes that are treated with plasminogen or those co-treated with plasminogen plus amiloride for 24 hours. HCA shows that plasminogen-treated podocytes have significantly fewer focal adhesions with larger surface area, perimeter and aspect ratio (ie, elongation). Partial rescue of focal adhesion area and perimeter (but not number or elongation) was conferred by amiloride co-treatment (Figure 2). The alterations in focal adhesion morphology were also reflected in cell and nuclear spreading

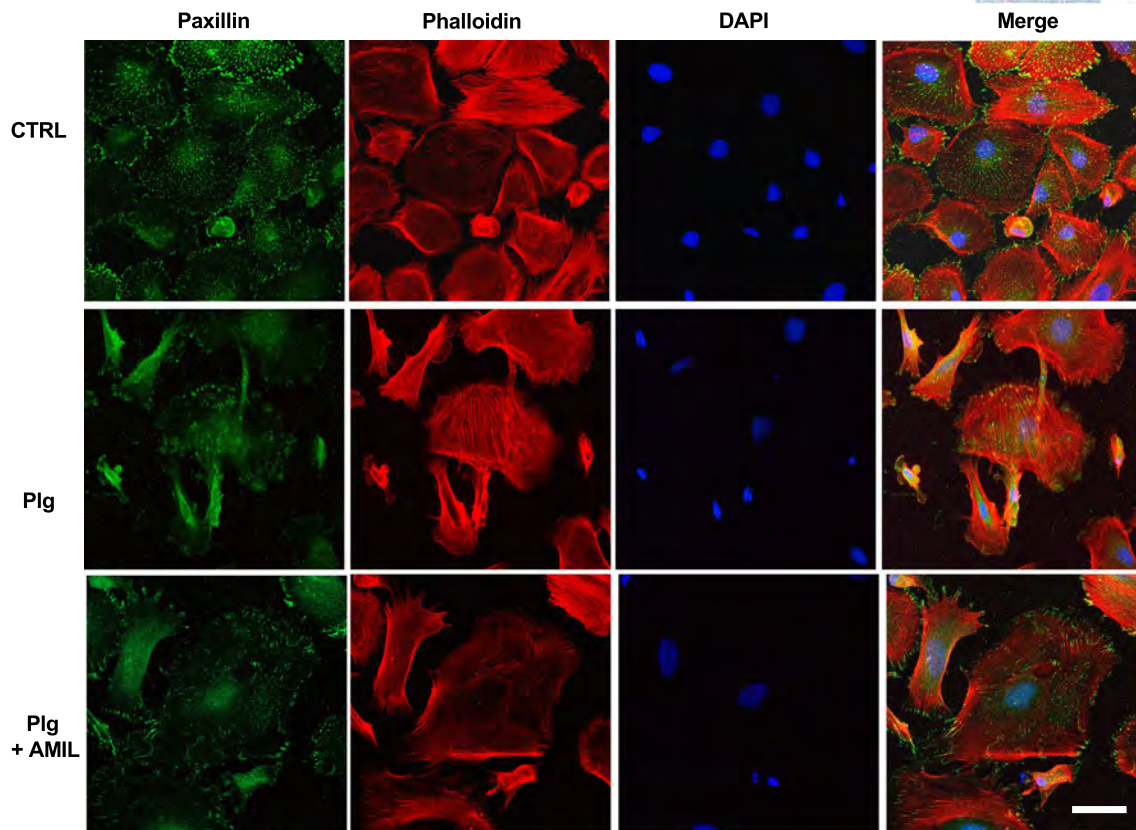


FIGURE 1 Amiloride protection from plasminogen-induced morphologic changes. Plasminogen treatment (1 μ M, 24 hours) decreases focal adhesion marker (paxillin) expression with rescue noted by amiloride co-treatment (10 μ M). Plasminogen treatment did not affect F-actin (phalloidin) expression. Scale bar = 50 μ m

area, which were both significantly reduced with plasminogen treatment.

3.2 | Amiloride decreases proteinuria in PAN nephropathy

We next sought to extend our hypothesis to an in vivo model. The PAN nephropathy model of podocyte injury has been previously shown to be associated with increased urinary plasmin (ogen).¹⁰ To reproduce these findings and determine the effects of amiloride treatment, adult male Wistar rats (6–8 weeks old) were treated with a single intravenous dose of PAN (100 mg/kg), PAN plus amiloride (0.5 mmol/L), or vehicle, and sacrificed on Day 8. PAN-treated rats developed increased proteinuria compared to controls (6.84 ± 0.62 mg/mg-Cr vs. 0.68 ± 0.07 mg/mg-Cr; $P < .0001$). Treatment with amiloride was associated with a 54.5% reduction in proteinuria, as compared to PAN alone (3.11 ± 0.32 mg/mg-Cr; $P < .0001$) (Figure 3A). In addition, PAN treatment caused increases in plasmin (ogen) uria (15.96 ± 2.47 μ g/mg-Cr vs. 2.16 ± 0.49 μ g/mg-Cr; $P < .0001$) (Figure 3B). Amiloride reduced PAN-induced plasmin (ogen) uria by 22.0%, though the difference was not statistically significant ($P = .095$)

(Figure 3B). Thus, PAN nephropathy is associated with increased proteinuria and urinary plasmin (ogen), both reduced by amiloride.

3.3 | Glomerular plasmin (ogen) is increased in PAN nephropathy

Given the reversibility of PAN nephropathy induced by a single injection,^{35–38} a separate time course experiment was conducted in order to objectively trend the time-dependent nature of glomerular plasmin (ogen). Across two proteomic analyses, the average size of the top 50 enriched proteins by mass-spectrometry were 85 ± 56 kDa and 59 ± 40 kDa, respectively, suggesting a wide range of identified molecular weight proteins. High plasmin (ogen) levels were quantified via iTRAQ proteomics in glomeruli of PAN-treated rats—glomerular plasminogen was elevated on Day 3 and peaked on Day 7 before returning to baseline by Day 14–21 (Figure 4A). The peptides identified as plasminogen were from both the N- and C-terminal regions and were not specific to uncleaved plasminogen or plasmin (data not shown). We confirmed the presence of elevated levels of plasmin (ogen) within glomerular isolates by western blotting (Figure 4B). Taken together,

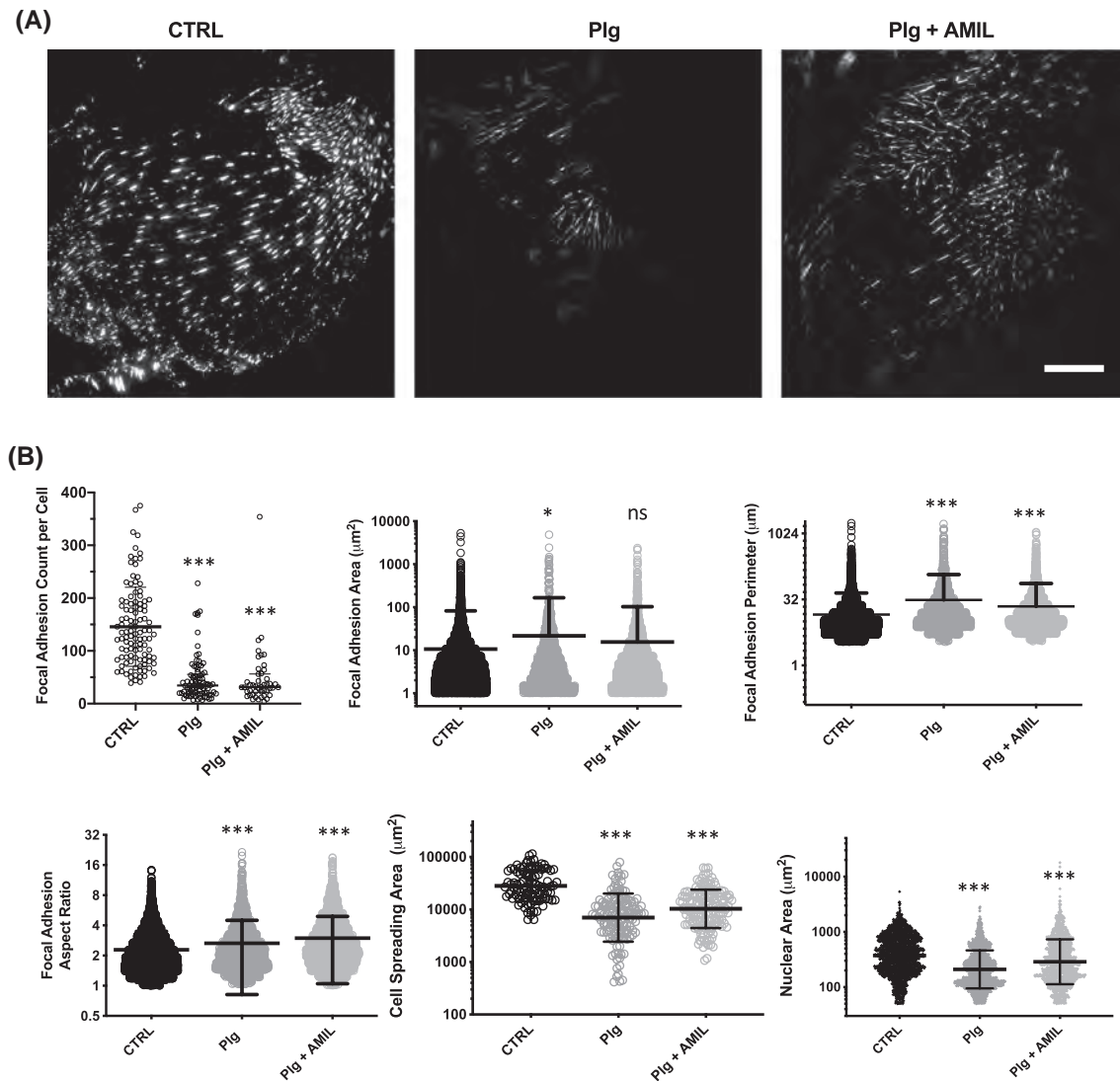


FIGURE 2 Podocyte morphologic changes with Plasminogen treatment (A) Representative total internal reflection fluorescence (TIRF) images of untreated (CTRL), plasminogen treated (Plg) and plasminogen-amiloride co-treated (Plg + AMIL) human podocytes imaged with an evanescent field depth of 75 nm. (B) Quantitative high content image analysis (HCA) showed that Plg treatment resulted in reduction of focal adhesion count per cell, nuclear area and cell spreading area with increases in focal adhesion area, perimeter and aspect ratio. Co-treatment with Plg + AMIL partially rescued podocytes from these morphologic changes. * $P < .05$, *** $P < .0005$ relative to CTRL using a Kruskal-Wallis test. Scale bar = 50 μm

excessive filtration of plasminogen occurs early following PAN-mediated podocyte injury, whereupon plasmin (ogen) strongly binds within the glomerulus.

3.4 | Amiloride treatment decreases oxidative stress and improves podocyte integrity in PAN nephropathy

We previously demonstrated that plasmin (ogen)-mediated ROS generation involved podocyte-specific upregulation of NADPH oxidases NOX2/4 and the B scavenger receptor CD36.²³ Here, we sought to determine the oxidative stress changes associated with PAN treatment with or

without amiloride. By immunofluorescence staining, we found that PAN treatment increased glomerular CD36, which colocalized with the podocyte marker synaptopodin (synpo) (Figure 5A). Glomerular gene expression by qPCR also showed increased CD36 with PAN (data not shown). Similarly, we showed enhanced double labeling immunofluorescence for 8-OxoG and synaptopodin, supporting PAN-mediated reactive oxygen species (ROS) generation in podocytes (Figure 5B). Importantly, PAN-induced increases in both CD36 and 8-oxo-G were ameliorated by amiloride treatment (Figure 5A,B).

Studies by us and others have highlighted the contribution of podocyte apoptosis to glomerular disease progression.²¹⁻²³ In support of our previous study, which

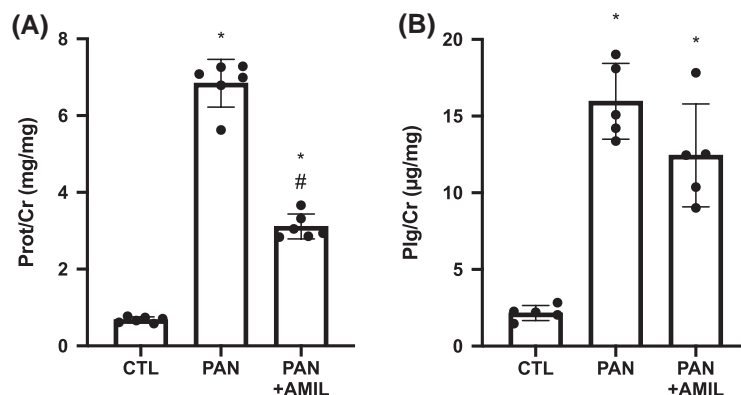
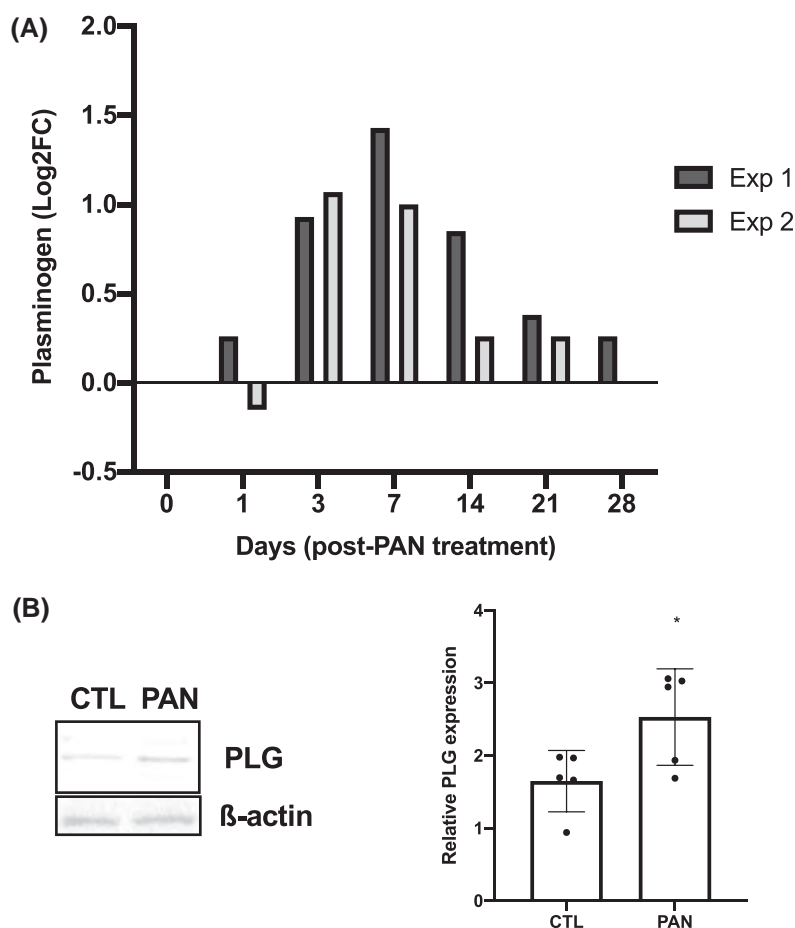


FIGURE 3 PAN nephropathy promotes urinary excretion of total protein and plasmin (ogen). PAN caused increased (A) proteinuria and (B) plasmin (ogen) uria, which were decreased by administration of amiloride (0.5 mmol/L amiloride q.d.). Plg/Cr, urinary plasmin (ogen)/creatinine; Prot/Cr, urinary protein/creatinine; amil, amiloride; * $P < .05$ relative to CTL; Each bar represents the mean \pm SD; # $P < .05$ relative to PAN alone; ANOVA

FIGURE 4 PAN nephropathy increases glomerular plasmin (ogen). Glomeruli from PAN-treated rats were isolated for mass spectrometry or immunoblotting. A, Plasmin (ogen) levels increased early following single dose PAN treatment by proteomics; dark gray box, experiment 1; light gray box, experiment 2. Plasmin (ogen) levels were increased in glomeruli of PAN-treated rats as detected by western blotting (B). Representative images are shown. The abundance of β -actin was used to normalize and densitometric analysis was performed using ImageJ. Each bar represents the mean \pm SD across four to five rats. PLG, plasmin (ogen); * $P < .05$; t -test



showed plasmin (ogen)-mediated podocyte apoptosis augmented by oxidized low-density lipoprotein (oxLDL), we found that total glomerular caspase-3 expression was enhanced with PAN treatment and reduced with amiloride (Figure 5C). Moreover, we determined that glomerular levels of markers of podocyte integrity, specifically

nephrin and synaptopodin, were reduced in PAN nephropathy (Figure 5C). Of note, both nephrin and synaptopodin are sensitive to ROS-mediated injury.^{39,40} Overall, the pathophysiologic changes observed with PAN treatment were either abrogated or reduced with amiloride (Figure 5). Taken together, these findings suggest that amiloride is

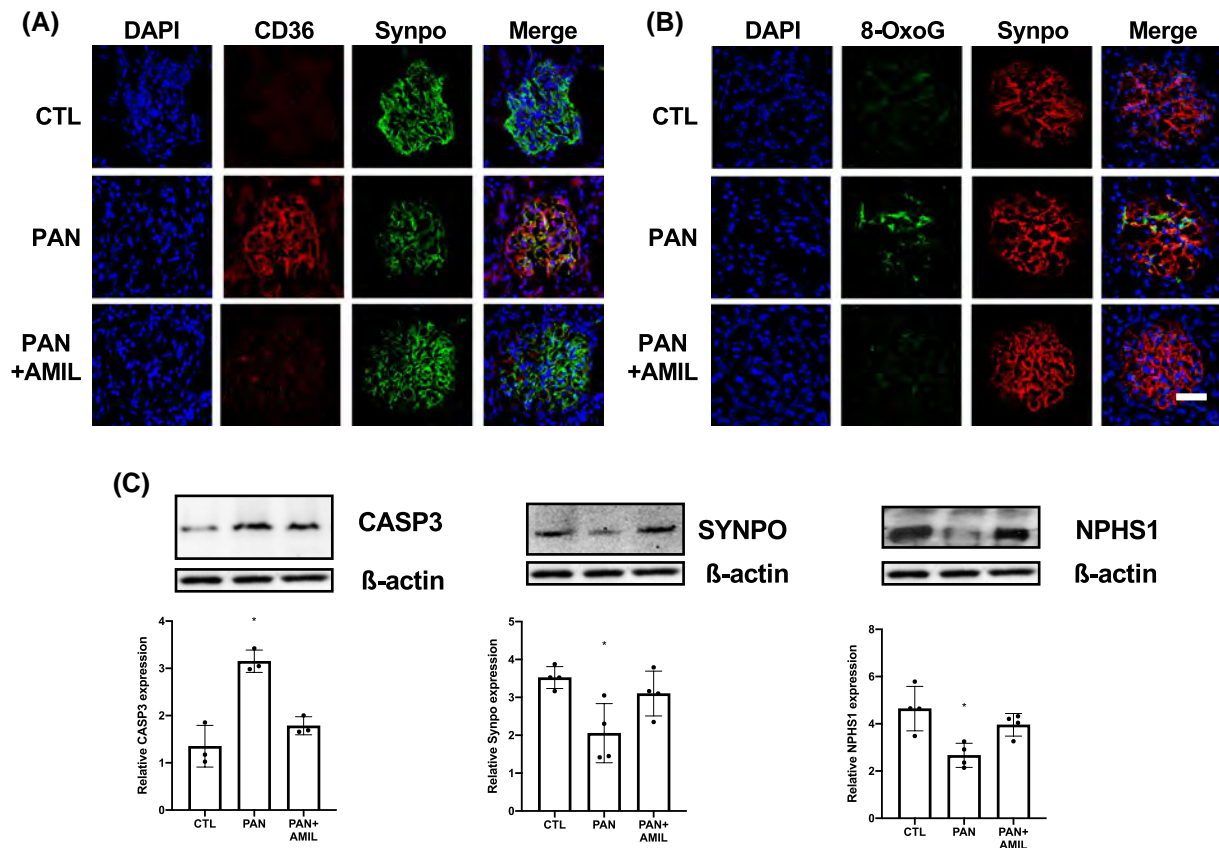


FIGURE 5 PAN nephropathy is associated with increased oxidative stress and impaired podocyte homeostasis (A, B) CD36 and 8-OxoG robustly accumulated in podocytes following PAN treatment. Administration of amiloride caused dramatic reduction in both markers. Red color shows staining for CD36 (A) and the podocyte marker synaptopodin (B). Green color shows staining for synaptopodin (A) and 8-Oxo-G (B). Nuclei were colored blue with DAPI. C, Significant bands for caspase 3, synaptopodin, and nephrin were observed in samples of isolated glomeruli from PAN-treated rats. Representative images are shown. The abundance of β -actin was used to normalize and densitometric analysis was performed using ImageJ. Each bar represents the mean \pm SD across three to four rats. * $P < .05$. ANOVA. Scale bar = 50 μ m

protective/stabilizing against PAN-induced oxidative stress and glomerular injury.

3.5 | Urinary plasmin (ogen) excretion is increased in human glomerular disease

Our study cohort included 128 patients with glomerular diseases with urine samples collected at the time of kidney biopsy. The full characteristics of the cohort are summarized in Table 1. Subjects had an average age of 48.3 years with mean eGFR 57.5 ± 36.7 mL/min/1.73 m². Of the subjects, 27% were edematous with 32% and 47% prescribed diuretics and angiotensin converting enzyme inhibitor (ACEi) or angiotensin II receptor blockers (ARB) respectively, at the time of biopsy. Participants with urinary plasmin (ogen) (log μ g/mg•Cr) in the upper quantile tended to be older with lower eGFR and were more likely to have edema with a prescription for diuretics and ACEi/ARB (Table 1).

Urinary plasmin (ogen) has been previously shown to be associated with hypervolemia in limited patient

cohorts.^{3,4,13-16} To validate these findings across a larger sample size in the setting of biopsy-proven glomerular diseases, we sought to define these relationships within our cohort. At baseline across all subjects, plasmin (ogen) uria (log μ g/mg•Cr) was strongly positively correlated with both proteinuria (log mg/mg•Cr; $r = 0.8348$, $P < .0001$) and albuminuria (log mg/mg•Cr; $r = 0.8219$, $P < .0001$) (Figure 6). In addition, plasmin (ogen) uria had an inverse correlation with eGFR ($r = -0.3320$, $P = .0001$) (Figure 6). To examine whether relative urinary plasmin (ogen) was associated with edema status and kidney function, we compared plasmin (ogen) uria with cross-sectionally data. Higher levels of all three biomarkers—plasmin (ogen) uria, albuminuria, and proteinuria—were associated with the presence of edema. However, only plasmin (ogen) uria was higher in patients with eGFR < 60 mL/min/1.73 m², compared those with eGFR ≥ 60 mL/min/1.73 m² (Figure 6).

In univariable analyses, plasmin (ogen) uria, along with both albuminuria and proteinuria, were similarly associated with increased odds of edema at time of biopsy (Table 2).

TABLE 1 Study characteristics of glomerular disease patient cohort. Values reported are n (percentages) for categorical variables and means for continuous variables

	log Plg/Cr (μg/g)			
	Summary data	Lower quantile	Upper quantile	P
Subjects	128	63	65	–
Age, yr	48.3	44.3	52.2	.0032
Sex, % Female	50.7	55.6	46.2	.2875
Race, % Hispanic	29.7	25.4	33.8	.2956
Log Alb/Cr, mg/g	3.15	2.7	3.57	<.0001
Log Prot/Cr, mg/g	3.35	2.94	3.75	<.0001
eGFR, mL/min/1.73 m ²	57.5	71	44.5	.0001
Edema, % subject	27.3	15.9	38.5	.0042
Diuretic use, % subject	32.0	23.8	40	.0497
ACEi/ARB use, % subject	46.9	34.9	58.5	.0076

Note: Data are presented as means stratified by Plg/Cr quantile based on median cohort value. eGFR is the GFR determined using the CKD-EPI formula. Alb/Cr, urinary albumin/creatinine; Prot/Cr, urinary protein/creatinine; Plg/Cr, urine plasmin(ogen)/creatinine.

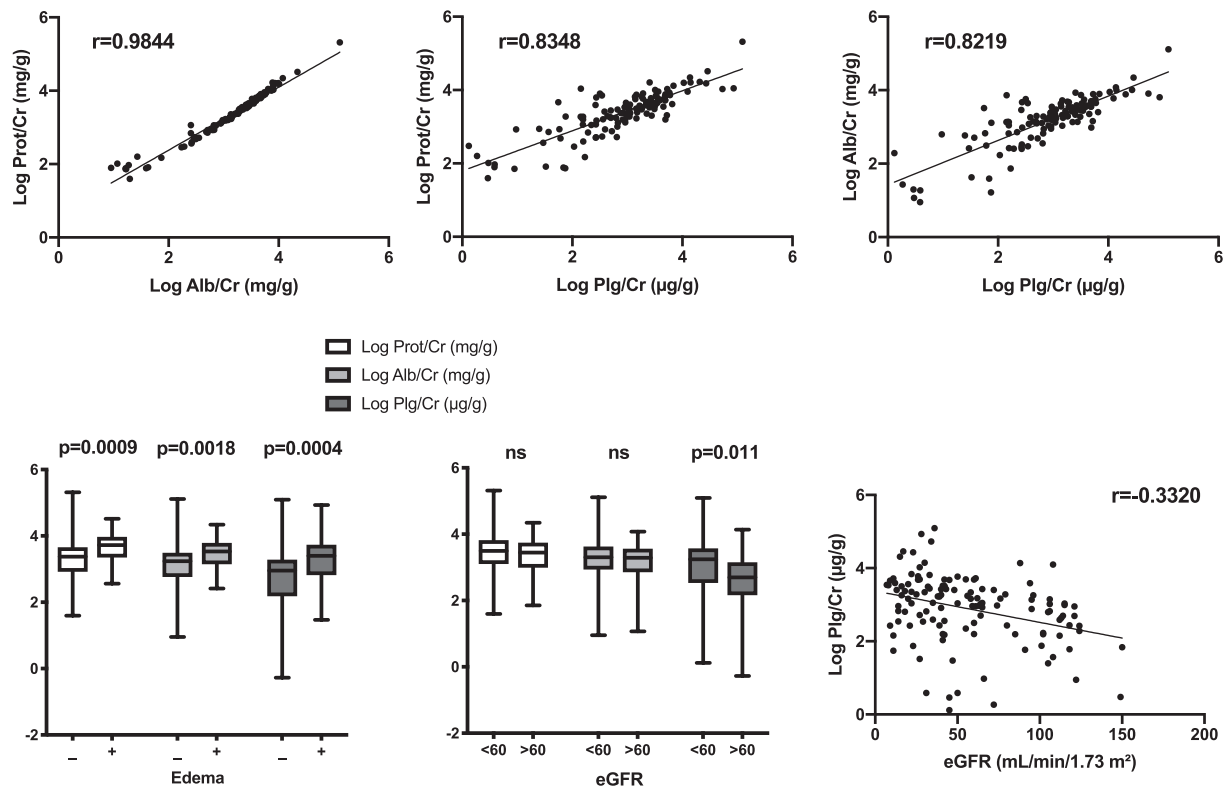


FIGURE 6 Plasmin (ogen) uria correlates with urinary biomarkers and kidney disease outcomes in cross-sectional analysis of patient urines. Log of urinary plasmin (ogen)/creatinine (log Plg/Cr) correlated with both total urine protein/creatinine (log Prot/Cr) and albumin/creatinine (log Alb/Cr) at biopsy. The presence of edema was significantly associated with higher levels of all tested urine markers whereas high log Plg/Cr correlated weakly with lower eGFR at time of biopsy. The ordinate represents log units, but the units for log Plg/Cr (μg/g) differ from those of log Prot/Cr and log Alb/Cr (mg/g). Whiskers represent standard deviations. *t*-test. White boxes, log Prot/Cr; light gray boxes, log Alb/Cr; dark gray boxes, log Plg/Cr

Adjusting for age, gender, race, use of ACEi/ARB or diuretics, and baseline eGFR did not affect the observed strengths of association. The three biomarkers had similar negative correlations with eGFR at time of biopsy, all of which were modestly attenuated after adjustment for covariates. (Table 2).

TABLE 2 Urine biomarkers are associated with edema and eGFR at time of biopsy

A		
Predictor	Edema OR (95% CI); <i>P</i> value	
	Univariate	Multivariable ^a
Proteinuria, log mg/g Cr	3.81 (1.74 to 9.73); <i>P</i> = .0022	3.80 (1.58 to 10.66); <i>P</i> = .0056
Albuminuria, log mg/g Cr	3.43 (1.61 to 8.75); <i>P</i> = .0041	3.49 (1.50 to 9.66); <i>P</i> = .0079
Plasmin (ogen) uria, log µg/g Cr	2.58 (1.53 to 4.79); <i>P</i> = .0010	2.96 (1.56 to 6.35); <i>P</i> = .0023

B		
Predictor	eGFR (95% CI); <i>P</i> value	
	Univariate	Multivariable ^a
Proteinuria, log mg/g Cr	−14.78 (−24.63 to −4.93); <i>P</i> = .0036	−8.11 (−17.40 to 1.17); ns (<i>P</i> = .09)
Albuminuria, log mg/g Cr	−11.04 (−19.83 to −2.24); <i>P</i> = .014	−6.10 (−14.29 to 2.09); ns (<i>P</i> = .14)
Plasmin (ogen) uria, log µg/g Cr	−13.82 (−19.76 to −7.88); <i>P</i> < .0001	−9.74 (−15.36 to −4.122); <i>P</i> = .0008

Note: (A) All three markers tested (log Prot/Cr, log Alb/Cr, log Plg/Cr) correlated with increased odds of edema at biopsy in both univariate and adjusted regression models. (B) All three markers tested (log Prot/Cr, log Alb/Cr, log Plg/Cr) were associated with reduced eGFR in both univariate and adjusted regression models. Negative values represent decrements in eGFR in log change mg/g or µg/g as indicated.

^aVariables selected for adjustment by a priori specification; included age, gender, race/ethnicity, use of drugs of time of biopsy: ACEi/ARB, diuretics, and eGFR (for edema model).

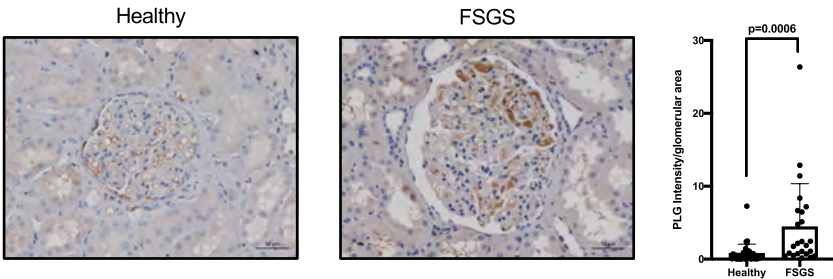


FIGURE 7 Immunohistochemistry of kidney from patients with focal segmental glomerulosclerosis (FSGS) is consistent with glomerular-associated plasmin (ogen) (A) Immunostaining for plasmin (ogen) was performed on paraffin-embedded human kidney sections. Representative images are shown. B, Quantitation of glomerular staining intensity was calculated and is shown as a fold change relative to control samples. Glomerular plasmin (ogen) staining is significantly increased in patients with FSGS compared with control subjects. Total number of glomeruli analyzed: *n* = 37 control (9–14 glomeruli from each of three individual patients), *n* = 24 FSGS (4–10 glomeruli from each of three individual patients); *t*-test. Scale bar = 50 µm

3.6 | Glomerular plasmin (ogen) is increased in human FSGS

Given our results demonstrating glomerular plasmin (ogen) in the PAN nephropathy rodent model, we sought to translate these novel findings to the clinical setting. Consistent with our observations in PAN-treated rats, we observed increased plasmin (ogen) expression within glomeruli from a series of human kidney biopsies of patients with FSGS, as compared to age-matched normal control kidney tissue (Figure 7).

4 | DISCUSSION

In the present study, (i) we experimentally assessed whether our previously published *in vitro* results could be translated to a well-established *in vivo* proteinuric rodent model and (ii) sought to better define the associations between plasmin (ogen) uria and clinically relevant kidney disease characteristics in patients with proteinuric glomerulopathies. Collectively, our novel findings, together with the previous *in vitro* data, lends further support to a model in which urinary plasmin (ogen) acts a “second hit” with direct and/or

indirect effects on podocytes and glomerular integrity in promoting CKD progression.

Independent of baseline eGFR or etiology, total proteinuria is a marker of kidney damage and a strong predictor of progression to end-stage renal disease.⁴¹⁻⁴⁸ As shown in the SPRINT trial, proteinuric patients who reach CKD stage 3-4 relentlessly progress to ESRD in spite of intensive blood pressure control.^{49,50} Moreover, increasing proteinuria in the setting of CKD correlates with increased risk of cardiovascular disease and all-cause mortality.⁴³⁻⁴⁸

Few reports, however, have identified a role for specific filtered proteins that contribute to kidney damage through cytotoxic effects on podocytes as “second hits”.^{1,2} Such work includes the identification of albumin as well as albumin bound FFA as a potential contributors to both glomerulosclerosis and tubulointerstitial injury via direct and indirect mechanisms.⁵¹⁻⁵⁴

In our studies with cultured human podocytes, we demonstrated the expression of PLG-RKT, uPA, and uPAR, which together facilitate binding and activation of plasminogen to plasmin on the cell surface.²³ Moreover, we observed that podocyte-bound plasmin induces oxidative stress and, importantly, that amiloride, a known potent inhibitor of uPA, rescued the plasminogen-induced injury response.²³ Here, we have shown that plasminogen treatment directly reduced focal adhesion marker expression. To expand upon the hypothesis that filtered plasminogen serves as a “second hit” in glomerular damage, we induced PAN nephrosis in rats, a model in which ROS-mediated cytoskeletal dysfunction has been well documented to promote foot process damage.^{23,35,55,56} PAN-treated rats developed severe proteinuria and plasmin (ogen) uria, similar to our studies in rodent models of FSGS and of HIV-associated nephropathy.^{10,23}

Mechanistically, and in support of our *in vitro* data, we found increased markers of apoptosis and oxidative stress, including CD36, 8-oxo-G and caspase-3, in glomerular isolates from PAN-treated rats, due at least in part to upregulation of NOX2/4 activity.²³ PAN treatment was also associated with a reduction of glomerular levels of synaptopodin and nephrin, two critical regulators of podocyte functional and structural homeostasis.⁵⁷⁻⁶⁴ Furthermore we determined—for the first time to our knowledge—that there was increased plasmin (ogen) within glomeruli of PAN rats and, remarkably, also in kidney biopsies of proteinuric FSGS patients, further supporting a model in which plasmin (ogen) is capable of *in vivo* podocyte binding and mediating *in situ* injurious effects.

Following amiloride treatment in PAN rats, we observed declines in proteinuria with a trend toward a decrease in plasmin (ogen) uria. Of note, utilizing a plasmin specific detection method, Svenningsen et al reported that in the presence of amiloride, urinary plasmin (ogen) is predominately unconverted plasminogen, in line with its function as an inhibitor of plasminogen cleavage/conversion to plasmin.¹⁰ Given that

current commercially available immunoassays do not discriminate between plasminogen and plasmin, we are unable to specifically report upon the relative urinary plasmin/plasminogen ratio.

The rescue phenotype observed with amiloride was consistently observed throughout our study across multiple downstream targets, as seen by both immunofluorescence and western blotting. While cell and nuclear spreading area were significantly ameliorated by amiloride co-treatment, we noted that there was no significant rescue for some of the focal adhesion markers impacted by plasminogen. This is unsurprising since focal adhesion assembly and maintenance are complex processes that involve numerous signaling pathways, many of which may be differentially impacted by amiloride. Earlier reports on amiloride initially demonstrated that it potently inhibits urinary uPA activity, preventing plasmin-mediated stimulation of ENaC activity and sodium retention.^{4,6,10} In our previous studies with cultured human podocytes we showed that amiloride, as an inhibitor of the conversion of plasminogen to plasmin, prevented plasmin-generated ROS in podocytes, thereby averting oxidative stress-mediated podocyte injury.²³ Our current data in PAN rats suggest that amiloride may have direct podocyte-sparing properties *in vivo*, upstream of its ENaC functionality. The findings are also consistent with other reports showing that amiloride has off-target anti-proteinuric effects by direct action on podocytes with the drug being shown to inhibit podocyte urokinase receptor expression (uPAR).^{29,65}

We have previously demonstrated high levels of plasmin (ogen) uria in a murine model of HIV nephropathy.²³ In a distinct model of HIV-induced podocytopathy-associated proteinuria, Matsusaka et al showed that acute unilateral ureteral obstruction mechanically arrested GFR and the trans-glomerular protein passage underlying proteinuria. Importantly, after 1 week, they observed preservation of podocyte morphology in the ipsilateral kidney, whereas proteinuria, progressive podocytopathy, and glomerulosclerosis developed in the contralateral unobstructed kidney.⁶⁶ This finding fits with our hypothesis that prevention of podocyte exposure to plasmin (ogen), either mechanically with ureteral obstruction or biochemically through the inhibition of its conversion to plasmin, could plausibly provide podocyte protection in proteinuric glomerulopathies.

Taken together, these previous studies, in combination with our own *in vitro* and *in vivo* work, strongly support the hypothesis that plasmin (ogen) serves as a putative causative agent, or “second hit,” in CKD progression, in addition to its known function as a biomarker and mediator in promoting volume overload. Studies in patients with CKD of various etiologies have both detected the presence of excessive urinary plasmin (ogen) and demonstrated its role as a novel biomarker.^{3,4,13-16} Plasmin (ogen) uria has been correlated with markers of glomerular proteinuria, namely albuminuria,

and found to be associated with sequela of fluid overload, including hypervolemia and hypertension, though most studies have been limited by sample size and/or single-disease etiologies.^{13-15,28}

In our cohort of 128 patients with biopsy-proven podocytopathies, we examined the association between urinary plasmin (ogen) levels and both volume overload (as determined by edema status) and kidney function (as determined by eGFR), compared with both albuminuria and proteinuria. The correlation we observed between plasmin (ogen) uria and albuminuria ($r = 0.8219$) is consistent with previous reports. We also observed that urinary excretion of plasmin (ogen) was independently correlated with edema status at time of biopsy, as are both total proteinuria and albuminuria, with all urine markers exhibiting similar degrees of association. These cross-sectional results for edema at the time of biopsy are similar to previous findings from studies conducted later in the disease course, including in patients with stable CKD.^{4,14,15}

We observed inverse correlations between the three biomarkers and eGFR at biopsy. This represents a potential relationship between urinary plasmin (ogen) excretion and eGFR in the setting of multiple biopsy-proven glomerular diseases. Similar results have been observed specifically in the setting of lupus nephritis.⁶⁷ Although the cross-sectional nature of our study prevents conclusions on a direct contribution of plasmin (ogen) to changes in eGFR, such a relationship is of interest, given the likely pro-injurious role of plasmin (ogen) on the glomerulus.

The results of this study should be viewed in light of some limitations. Our rodent model is associated with plasmin (ogen) uria, with amiloride having rescue effects that were previously attributed to plasmin (ogen) in vitro.²³ Although other proteins and/or mechanisms may account for some of the observed results, our data provide indirect evidence for a role of plasmin (ogen) in mediating injury in the PAN model. Another limitation is that the cross-sectional nature of our study, absence of longitudinal outcomes and small sample size prevented us from performing a mediation analysis to test whether adding plasminogenuria increases the prediction odds ratio of albuminuria for the development of edema or decline in eGFR. The small sample size also precluded a ridge regression analysis for highly collinear plasminogenuria and albuminuria without very high penalties and bias.¹⁴ However, the proposed biological mechanism, as shown by our in vitro and in vivo studies, supports a direct role plasmin (ogen). This remains one of the largest to study plasmin (ogen) to date across biopsy-proven etiologies and lays the foundation for further exploration of the relationship between plasmin (ogen) uria and eGFR longitudinally in a similar population with a larger sample size and time-to-event data.

Collectively, our results, in support of previous findings, suggest a pathogenic role for intra-glomerular plasminogen activation, in which in situ conversion of plasminogen to plasmin on podocyte surface by podocyte-bound uPA leads to plasmin-mediated podocyte injury and worsening of the underlying proteinuric glomerular process. Once cell bound, plasmin is protected from inactivation by inhibitors, such as α -2-antiplasmin, and is able to initiate cell responses linked to both its proteolytic and non-proteolytic actions, including degradation of matrix proteins facilitating podocyte detachment and induction of CD36 and ROS synthesis resulting in mitochondrial injury and apoptosis. In combination with our clinical findings, this suggests a dual function of plasmin (ogen) in the progression of kidney disease as a targetable biomarker, with effects at two independent sites within the nephron. As such, this may signal a shift in the current paradigm from the view of targeting plasmin (ogen) uria to solely treat sodium retention in nephrotic syndrome to early inhibition of plasmin activity in promote glomerular integrity in a wide-range of podocytopathies.

ACKNOWLEDGMENTS

We thank Siarhei Szedzik for immunohistochemistry work. We thank Meher Ahmed for biorepository support. We also thank Tong Liu and Mohit Jain for contributions with the proteomics data. SGC is supported, in part, by the following grants: R01DK115562, U01DK10692, R01HL85757, R01DK112258, and U01OH011326. EUA is supported, in part, by R01DK103022 from NIH/NIDDK and PR191906P1 from Department of the Army. KNC is supported by NIH/NIDDK R01 grants DK103022 and DK122807. LR is supported by South Florida Veterans Affairs Foundation For Research and Education (SFVAFRE). The Orbitrap mass spectrometers used for this study were funded by NIH grants NS046593 and 1S10OD025047-01 to H. Li.

DISCLOSURES

SGC reports personal fees and other from RenalytixAI, personal fees from CHF Solutions, personal fees from Quark, personal fees from Takeda, personal fees from Janssen, personal fees and other from pulseData, personal fees from Goldfinch, personal fees from Relypsa, outside the submitted work. KNC has received research funding and consultancy fees from Mallinckrodt Pharmaceuticals, Goldfinch Bio and Retrophin. No conflicts of interest, financial or otherwise, are declared by other author(s).

AUTHOR CONTRIBUTIONS

Conceptualization and Experimental Design, M.A. Egerman, K.N. Campbell, and L. Raij; Experiment Execution, M.A. Egerman, J.S. Wong, J. Reyes-Bahamonde, T. Runxia, N. Anandakrishnan, N.J. Wong, F. Salem, G.

Mosoyan, and E.U. Azeloglu; Statistical Analyses, M.A. Egerman, E. Bagiella, S.G. Coca; Manuscript Preparation, M.A. Egerman, K.N. Campbell, L. Raij, with input from all authors.

REFERENCES

- Artunc F, Worn M, Schork A, Bohnert BN. Proteasuria—the impact of active urinary proteases on sodium retention in nephrotic syndrome. *Acta Physiol (Oxf)*. 2019;225:e13249.
- Zandi-Nejad K, Eddy AA, Glasscock RJ, Brenner BM. Why is proteinuria an ominous biomarker of progressive kidney disease? *Kidney Int*. 2004;66:S76-S89.
- Buhl KB, Friis UG, Svenningsen P, et al. Urinary plasmin activating collecting duct ENaC current in preeclampsia. *Hypertension*. 2012;60:1346-1351.
- Andersen H, Friis UG, Hansen PB, Svenningsen P, Henriksen JE, Jensen BL. Diabetic nephropathy is associated with increased urine excretion of proteases plasmin, prostatic and urokinase and activation of amiloride-sensitive current in collecting duct cells. *Nephrol Dial Transplant*. 2015;30:781-789.
- Svenningsen P, Andersen H, Nielsen LH, Jensen BL. Urinary serine proteases and activation of ENaC in kidney—implications for physiological renal salt handling and hypertensive disorders with albuminuria. *Pflugers Arch*. 2015;467:531-542.
- Stæhr M, Buhl KB, Andersen RF, et al. Aberrant glomerular filtration of urokinase-type plasminogen activator in nephrotic syndrome leads to amiloride-sensitive plasminogen activation in urine. *Am J Physiol Renal Physiol*. 2015;309:F235-F241.
- Hinrichs GR, Michelsen JS, Zachar R, et al. Albuminuria in kidney transplant recipients is associated with increased urinary serine proteases and activation of the epithelial sodium channel. *Am J Physiol Renal Physiol*. 2018;315:F151-F160.
- Kakizoe Y, Kitamura K, Ko T, et al. Aberrant ENaC activation in Dahl salt-sensitive rats. *J Hypertens*. 2009;27:1679-1689.
- Kleyman TR, Carattino MD, Hughey RP. ENaC at the cutting edge: regulation of epithelial sodium channels by proteases. *J Biol Chem*. 2009;284:20447-20451.
- Svenningsen P, Bistrup C, Friis UG, et al. Plasmin in nephrotic urine activates the epithelial sodium channel. *J Am Soc Nephrol*. 2009;20:299-310.
- Svenningsen P, Skøtt O, Jensen BL. Proteinuric diseases with sodium retention: is plasmin the link? *Clin Exp Pharmacol Physiol*. 2012;39:117-124.
- Passero CJ, Hughey RP, Kleyman TR. New role for plasmin in sodium homeostasis. *Curr Opin Nephrol Hypertens*. 2010;19:13-19.
- Buhl KB, Oxlund CS, Friis UG, et al. Plasmin in urine from patients with type 2 diabetes and treatment-resistant hypertension activates ENaC in vitro. *J Hypertens*. 2014;32:1672-1677; discussion 1677.
- Schork A, Woern M, Kalbacher H, et al. Association of plasminuria with overhydration in patients with CKD. *Clin J Am Soc Nephrol*. 2016;11:761-769.
- Ray EC, Miller RG, Demko JE, et al. Urinary plasmin(ogen) as a prognostic factor for hypertension. *Kidney Int Rep*. 2018;3:1434-1442.
- Chen J-L, Wang L, Yao X-M, et al. Association of urinary plasminogen-plasmin with edema and epithelial sodium channel activation in patients with nephrotic syndrome. *Am J Nephrol*. 2019;50:92-104.
- Wiggins R-C. The spectrum of podocytopathies: a unifying view of glomerular diseases. *Kidney Int*. 2007;71:1205-1214.
- Fukuda A, Wickman LT, Venkatreddy MP, et al. Angiotensin II-dependent persistent podocyte loss from destabilized glomeruli causes progression of end stage kidney disease. *Kidney Int*. 2012;81:40-55.
- Kopp JB. Glomerular homeostasis requires a match between podocyte mass and metabolic load. *Am Soc Nephrol*. 2012;23(8):1273-1275.
- Wickman L, Afshinnia F, Wang SQ, et al. Urine podocyte mRNAs, proteinuria, and progression in human glomerular diseases. *J Am Soc Nephrol*. 2013;24:2081-2095.
- Reiser J, Sever S. Podocyte biology and pathogenesis of kidney disease. *Annu Rev Med*. 2013;64:357-366.
- Mundel P, Shankland SJ. Podocyte biology and response to injury. *J Am Soc Nephrol*. 2002;13:3005-3015.
- Raij L, Tian R, Wong JS, He JC, Campbell KN. Podocyte injury: the role of proteinuria, urinary plasminogen, and oxidative stress. *Am J Physiol Renal Physiol*. 2016;311:F1308-F1317.
- Meilhac O, Ho-Tin-Noé B, Houard X, Philippe M, Michel J-B, Anglés-Cano E. Pericellular plasmin induces smooth muscle cell anoikis. *FASEB J*. 2003;17:1301-1303.
- Svenningsen P, Hinrichs GR, Zachar R, Ydegaard R, Jensen BL. Physiology and pathophysiology of the plasminogen system in the kidney. *Pflugers Arch*. 2017;469:1415-1423.
- Miles LA, Hawley SB, Baik N, Andronicos NM, Castellino FJ, Parmer RJ. Plasminogen receptors: the sine qua non of cell surface plasminogen activation. *Front Biosci*. 2005;10:1754-1762.
- Min K-J, Jou I, Joe E. Plasminogen-induced IL-1 β and TNF- α production in microglia is regulated by reactive oxygen species. *Biochem Biophys Res Comm*. 2003;312:969-974.
- Oxlund CS, Buhl KB, Jacobsen IA, et al. Amiloride lowers blood pressure and attenuates urine plasminogen activation in patients with treatment-resistant hypertension. *J Am Soc Hypertens*. 2014;8:872-881.
- Zhang B, Xie S, Shi W, Yang Y. Amiloride off-target effect inhibits podocyte urokinase receptor expression and reduces proteinuria. *Nephrol Dial Transplant*. 2012;27:1746-1755.
- Saleem MA, O'Hare MJ, Reiser J, et al. A conditionally immortalized human podocyte cell line demonstrating nephrin and podocin expression. *J Am Soc Nephrol*. 2002;13:630-638.
- Ge X, Zhang T, Yu X, et al. LIM-nebulette reinforces podocyte structural integrity by linking actin and vimentin filaments. *J Am Soc Nephrol*. 2020;31(10):2372-2391.
- Calizo RC, Bhattacharya S, van Hasselt JGC, et al. Disruption of podocyte cytoskeletal biomechanics by dasatinib leads to nephrotoxicity. *Nat Commun*. 2019;10:2061.
- Azeloglu EU, Hardy SV, Eungdamrong NJ, et al. Interconnected network motifs control podocyte morphology and kidney function. *Sci Signal*. 2014;7:ra12.
- Muroya Y, Ito O. Effect of clofibrate on fatty acid metabolism in the kidney of puromycin-induced nephrotic rats. *Clin Exp Nephrol*. 2016;20:862-870.
- Hagiwara M, Yamagata K, Capaldi R, Koyama A. Mitochondrial dysfunction in focal segmental glomerulosclerosis of puromycin aminonucleoside nephrosis. *Kidney Int*. 2006;69:1146-1152.
- Fukuda A, Fujimoto S, Iwatsubo S, Kawachi H, Kitamura K. Effects of mineralocorticoid and angiotensin II receptor blockers on proteinuria and glomerular podocyte protein expression in a model of minimal change nephrotic syndrome. *Nephrology*. 2010;15:321-326.

37. Liu H, Shah SV, Baliga R. Cytochrome P-450 as a source of catalytic iron in minimal change nephrotic syndrome in rats. *Am J Physiol Renal Physiol*. 2001;280:F88-F94.
38. Kim YH, Goyal M, Kurnit D, et al. Podocyte depletion and glomerulosclerosis have a direct relationship in the PAN-treated rat. *Kidney Int*. 2001;60:957-968.
39. Fakhruddin S, Alanazi W, Jackson KE. Diabetes-induced reactive oxygen species: mechanism of their generation and role in renal injury. *J Diabetes Res*. 2017;2017:1-30.
40. Susztak K, Raff AC, Schiffer M, Böttinger EP. Glucose-induced reactive oxygen species cause apoptosis of podocytes and podocyte depletion at the onset of diabetic nephropathy. *Diabetes*. 2006;55:225-233.
41. Mann JF, Yi Q-L, Gerstein HC. Albuminuria as a predictor of cardiovascular and renal outcomes in people with known atherosclerotic cardiovascular disease. *Kidney Int*. 2004;66:S59-S62.
42. Peterson JC, Adler S, Burkart JM, et al. Blood pressure control, proteinuria, and the progression of renal disease: the modification of diet in renal disease study. *Ann Intern Med*. 1995;123:754-762.
43. Culeton BF, Larson MG, Parfrey PS, Kannel WB, Levy D. Proteinuria as a risk factor for cardiovascular disease and mortality in older people: a prospective study. *Am J Med*. 2000;109:1-8.
44. Matsushita K, Van der Velde M, Astor B, et al. Chronic kidney disease prognosis consortium: association of estimated glomerular filtration rate and albuminuria with all-cause and cardiovascular mortality in general population cohorts: a collaborative meta-analysis. *Lancet*. 2010;375:2073-2081.
45. Irie F, Iso H, Sairenchi T, et al. The relationships of proteinuria, serum creatinine, glomerular filtration rate with cardiovascular disease mortality in Japanese general population. *Kidney Int*. 2006;69:1264-1271.
46. Inoue T, Iseki K, Higashiusato Y, et al. Proteinuria as a significant determinant of hypertension in a normotensive screened cohort in Okinawa, Japan. *Hypertens Res*. 2006;29:687-693.
47. Bello AK, Hemmelgarn B, Lloyd A, et al. Associations among estimated glomerular filtration rate, proteinuria, and adverse cardiovascular outcomes. *Clin J Am Soc Nephrol*. 2011;6:1418-1426.
48. Currie G, Delles C. Proteinuria and its relation to cardiovascular disease. *Int J Nephrol Renovasc Dis*. 2014;7:13.
49. Cheung AK, Rahman M, Reboussin DM, et al. Effects of intensive BP control in CKD. *J Am Soc Nephrol*. 2017;28:2812-2823.
50. Xie X, Atkins E, Lv J, et al. Effects of intensive blood pressure lowering on cardiovascular and renal outcomes: updated systematic review and meta-analysis. *Lancet*. 2016;387:435-443.
51. Remuzzi G, Benigni A, Remuzzi A. Mechanisms of progression and regression of renal lesions of chronic nephropathies and diabetes. *J Clin Invest*. 2006;116:288-296.
52. Chung J-J, Huber TB, Gödel M, et al. Albumin-associated free fatty acids induce macropinocytosis in podocytes. *J Clin Invest*. 2015;125:2307-2316.
53. Morigi M, Buelli S, Angioletti S, et al. In response to protein load podocytes reorganize cytoskeleton and modulate endothelin-1 gene: implication for permselective dysfunction of chronic nephropathies. *Am J Pathol*. 2005;166:1309-1320.
54. Kinugasa S, Tojo A, Sakai T, et al. Selective albuminuria via podocyte albumin transport in puromycin nephrotic rats is attenuated by an inhibitor of NADPH oxidase. *Kidney Int*. 2011;80:1328-1338.
55. Rincon J, Romero M, Viera N, Pedreañez A, Mosquera J. Increased oxidative stress and apoptosis in acute puromycin aminonucleoside nephrosis. *Int J Exp Pathol*. 2004;85:25-33.
56. Marshall C, Pippin J, Krofft R, Shankland S. Puromycin aminonucleoside induces oxidant-dependent DNA damage in podocytes in vitro and in vivo. *Kidney Int*. 2006;70:1962-1973.
57. Asanuma K, Kim K, Oh J, et al. Synaptopodin regulates the actin-bundling activity of alpha-actinin in an isoform-specific manner. *J Clin Invest*. 2005;115:1188-1198.
58. Asanuma K, Yanagida-Asanuma E, Faul C, Tomino Y, Kim K, Mundel P. Synaptopodin orchestrates actin organization and cell motility via regulation of RhoA signalling. *Nat Cell Biol*. 2006;8:485-491.
59. Yanagida-Asanuma E, Asanuma K, Kim K, et al. Synaptopodin protects against proteinuria by disrupting Cdc 42:IRSp53: Mena signaling complexes in kidney podocytes. *Am J Pathol*. 2007;171:415-427.
60. Donoviel DB, Freed DD, Vogel H, et al. Proteinuria and perinatal lethality in mice lacking NEPH1, a novel protein with homology to NEPHRIN. *Mol Cell Biol*. 2001;21:4829-4836.
61. Garg P, Verma R, Nihalani D, Johnstone DB, Holzman LB. Neph1 cooperates with nephrin to transduce a signal that induces actin polymerization. *Mol Cell Biol*. 2007;27:8698-8712.
62. Hartleben B, Schweizer H, Lubben P, et al. Neph-Nephrin proteins bind the Par3-Par6-atypical protein kinase C (aPKC) complex to regulate podocyte cell polarity. *J Biol Chem*. 2008;283:23033-23038.
63. Jones N, Blasutig IM, Eremina V, et al. Nck adaptor proteins link nephrin to the actin cytoskeleton of kidney podocytes. *Nature*. 2006;440:818-823.
64. Philippe A, Nevo F, Esquivel EL, et al. Nephrin mutations can cause childhood-onset steroid-resistant nephrotic syndrome. *J Am Soc Nephrol*. 2008;19:1871-1878.
65. He C, Zhang B, Xie S, Yang Y, Ma J, Shi W. Amiloride reduces proteinuria and inhibits podocyte uPAR in the 5/6 nephrectomy rats. *Nan Fang Yi Ke Da Xue Xue Bao*. 2014;34:1654-1657.
66. Matsusaka T, Kobayashi K, Kon V, Pastan I, Fogo AB, Ichikawa I. Glomerular sclerosis is prevented during urinary tract obstruction due to podocyte protection. *Am J Physiol Renal Physiol*. 2010;300:F792-F800.
67. Qin L, Stanley S, Ding H, et al. Urinary pro-thrombotic, anti-thrombotic, and fibrinolytic molecules as biomarkers of lupus nephritis. *Arthritis Res Ther*. 2019;21:176.

How to cite this article: Egerman MA, Wong JS, Runxia T, et al. Plasminogenuria is associated with podocyte injury, edema, and kidney dysfunction in incident glomerular disease. *The FASEB Journal*. 2020;34:16191–16204. <https://doi.org/10.1096/fj.202000413R>