

Right from the Start

Outline

Safety Basics

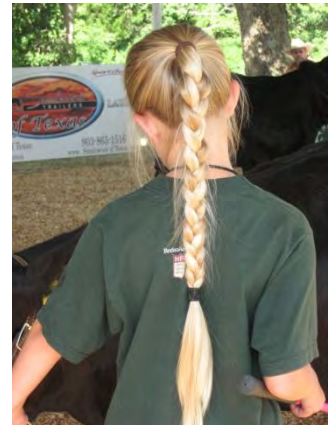
Attire

- Closed-toe shoes
- Close fitting clothing
- No dangling jewelry
- Tie back long hair



Attitude

- Handlers should possess the following qualities:
 - Sense of responsibility
 - Calm demeanor
 - Patience
 - Determination



Flight Zone

- Distance that animals like to keep between themselves and a threat of danger
- Animal's safety zone
- Varies among animals
- Increases when an animal is excited or approached from the front

Approaching

- Make animals aware of your presence.
- Approach where the animal can see you.
- Approach calmly and quietly.
- Never approach an animal in its blind spot.

Danger Points

- Danger points vary depending on the species of livestock.
- Typical danger points include:
 - Body mass
 - Head
 - Feet

Equipment Risks

- Lead rope
 - Use a thick, cotton lead rope. Nylon lead ropes are more likely to cause rope burns.
 - Do not wrap the lead rope around your hand.
 - The lead rope for cattle should be about 2 feet long to avoid tripping over the slack. The lead rope for horses should be 9-12 feet long.
- Neck chains
 - Neck chains should have a plastic covering or a leather piece for the handler to hold in order to reduce pinching risks.
- Squeeze chutes
 - Chutes require regular maintenance to stay in good working order.
 - Avoid pinch points.
 - Be aware of the tipping risk. Use restraints to keep animals in the appropriate place inside the chute.
- Grooming tools
 - Grooming tools could pose a burn or cut risk. Wear gloves while grooming to protect your hands.



Right From the Start

Safety Basics

Attire

- Closed-toe shoes
- No dangling jewelry
- Long hair tied back
- Close fitting clothing



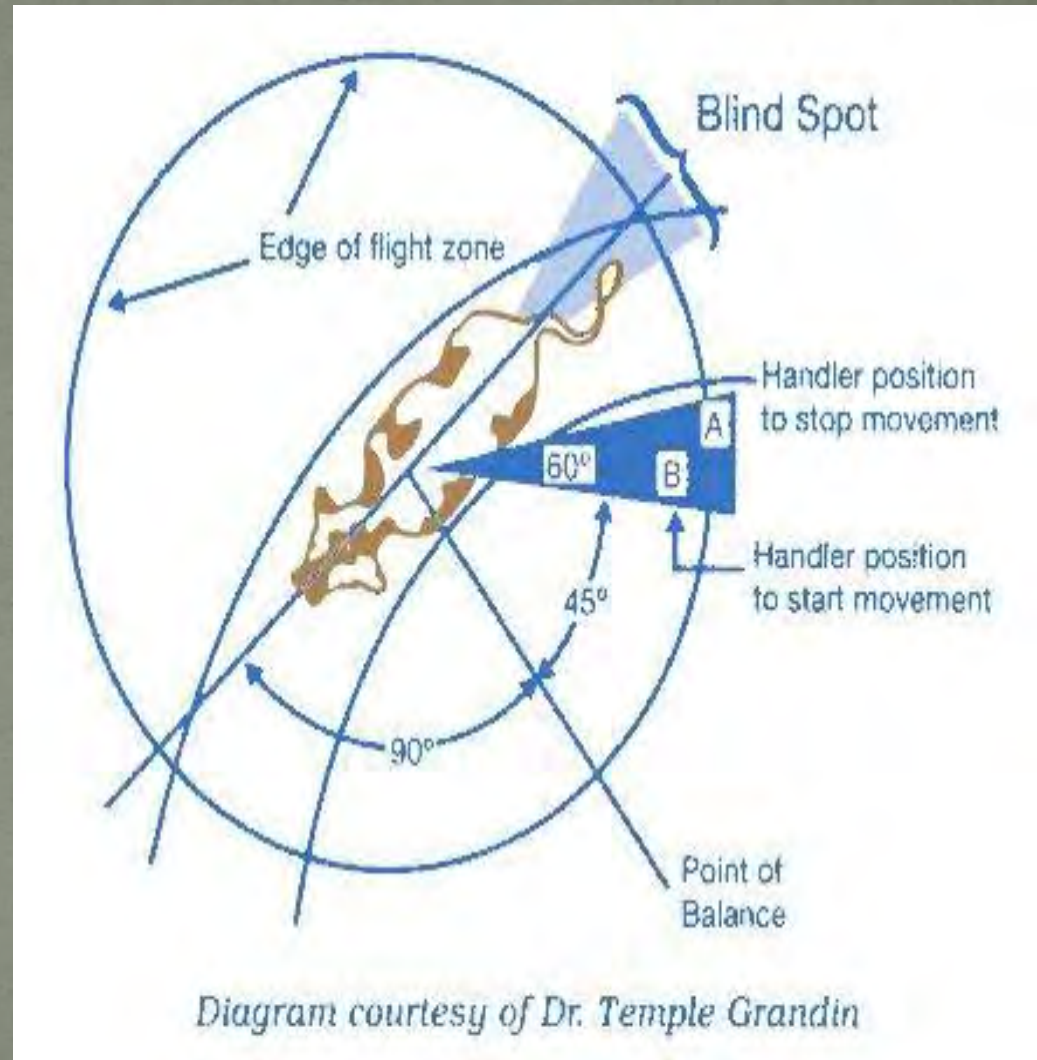
Attitude

- Responsible
- Calm
- Patient
- Determined



Flight Zone

- Safety zone
- Varies among animals
- Increases when an animal is excited or approached from the front



Approaching

- Always make animals aware of your presence
- Approach where the animal can see you
- Never approach from the animal's blind spot
- Approach calmly and quietly

Danger Points

- Body Mass
- Head
- Feet



Equipment Risks

- Lead rope
 - Use cotton (not nylon)
 - Do not wrap lead rope around your hand tightly
 - Should be about 2 feet long; avoid tripping on lead rope
 - Let go if the animal pulls you off balance or pulls you to the ground
- Neck chains
 - Need plastic covering or leather hand grip; reduce pinching risk



Equipment Risks cont.

- Squeeze chutes
 - Maintain properly
 - Avoid pinch points
 - Tipping risk
- Grooming tools
 - Burns
 - Cuts
 - Wear gloves to protect your hands.



The Southwest Center for Agricultural Health, Injury Prevention and Education

www.swagcenter.org

903-877-5998

agcenter@uthct.edu

Support for this resource was provided by NIOSH/CDC
Cooperative Agreement #U54-OH07541 and the

Houston Livestock Show and Rodeo™

NIOSH/CDC Cooperative Agreement #U54-OH07541

Right from the Start

Student Notes

Safety Basics

This information corresponds with the Safety Basics chapter of the Right from the Start DVD.

Wearing shoes that cover your (1)_____ and _____ is important.

Livestock have a definite (2)_____ _____.

The instinct of the animal is to (3)_____ _____ from human contact.

The presence of a helper or parent will impact how the animal reacts to the person (4)_____.

Danger Points

One of the worst danger points is their (5)_____.

Most animals are not prone to kick unless they are (6)_____ or (7)_____.

We can predict an adverse reaction from (8)_____ twitching or (9)_____ twitching.

When you pass behind an animal, you want to stay (10)_____ to their body.

The natural instinct of an animal is to (11)_____ and move forward.

Get animals accustomed to contact around their (12)_____.

Don't teach an animal that they can (13)_____ against you.

They (livestock) are a (14)_____ animal.

Get livestock accustomed to every type of individual, including (15)_____.

Don't get the (16)_____ wrapped around your hand or arm.

If you lose your balance, you should (17)_____ _____.



Answer Key

1. Feet and toes
2. Flight zone
3. Move away
4. Exhibiting
5. Feet
6. Startled
7. Agitated
8. Ears
9. Tails
10. Close
11. Jump
12. Head
13. Push
14. Prey
15. Children
16. Rope or leather strap
17. Turn loose



Right from the Start

Quiz

Safety Basics

Select all answers that apply.

1. Which piece of clothing is not appropriate for handling livestock?
 - a. Jeans
 - b. Snug fitting shirt
 - c. Sandals
 - d. Boots

2. What is a flight zone?

3. Which animals are more dangerous to handle? Select all that apply.
 - a. Experienced show steer
 - b. Mothers who just had a baby
 - c. Intact males
 - d. Pet dog

4. Which of these is not considered a danger point on an animal?
 - a. Feet
 - b. Stomach
 - c. Body mass
 - d. Head



5. How should the handler hold the lead rope?
 - a. Tightly wrapped around your hand
 - b. In one hand with the slack hanging to the ground
 - c. In the right hand with the slack loosely coiled or folded in the left hand
 - d. Around your waist

6. Describe the correct way to approach an animal.



Answer Key

1. C

2. The flight zone is the distance that animals like to keep between themselves and a threat of danger. It is commonly referred to as the animal's safety zone.

3. B & C

4. B

5. C

6. You should approach an animal slowly and calmly. Make the animal aware of your presence.

