


[Tweet](#) [inShare](#)
[Share this Page:](#)


Southwest Center

FOR AGRICULTURAL HEALTH, INJURY PREVENTION, AND EDUCATION

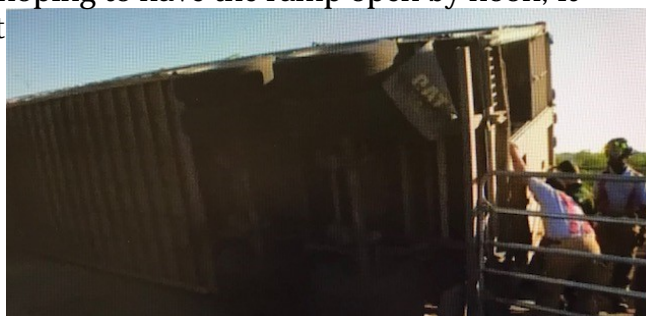
Monthly Safety Blast

Produced by the Southwest Center for Agricultural Health, Injury Prevention and Education

October 2017

Trailer Safety

A early-morning crash involving an overturned cattle truck and trailer shut down a freeway interchange ramp in Downtown Fort Worth for nearly 10 hours Wednesday. The ramp from U.S Hwy 287 to northbound I-35W was closed due to the crash for most of the day. After hoping to have the ramp open by noon, it ended up opening to traffic at about 4 p.m. The overturned cattle trailer was carrying 95 cows. At least 27 cows were confirmed dead after the crash, but there are several more on the trailer with broken legs that may have to be euthanized. The trailer is from Kansas, driver of the trailer may be cited for not reducing his speed on a ramp, according to police sources. (Published Wednesday, April 23, 2014)



Here are a few common rules and suggestions:

Know your capacity.

Do not exceed the GVWR (Gross Vehicle Weight Rating). The GVWR for the trailer is usually listed on the sticker with the VIN number. However, the weight capacity of the axle can be determined by measuring the diameter of the axle.

Typical Trailer Axle Diameters Based on Axle Capacity:

<u>Axle Diameter</u>	<u>Gross Vehicle Weight Rating (GVWR)</u>
1 - 3/4"	1,000 - 2,000 pounds
2 - 3/8"	3,500 pounds
3"	7,200 pounds

3 - 1/2"	8,000 pounds
4"	9,000 pounds
5"	10,000 pounds or more

Inflate your trailer tires to their optimum pressure.

Most trailer tires are designed to operate at max pressure, but before hitting the road check the weather forecast, road conditions, etc. Weather conditions can cause changes in tire pressure.

Move Forward.

Try to load more than half of your cargo load in the front half of the trailer box to avoid dangerous sway or whipping.

Slow down. Reduce your speed every time you detect a dangerous circumstance (blown tire, side sway, whipping, or any deviation from the trailer path). Do not slam on your brakes, accelerate, or try to over compensate. Slow down and maintain control of your vehicle and trailer.

Drive now, talk later. Not only can using a mobile phone while driving be unsafe, it is downright illegal in some states. Adhere to all local laws and make sure you drive safely.

Don't do it.

Avoid fatigue, sleepiness, the use of alcohol, or any substance that might impair your vision, judgment, or ability to control the vehicle.

No passengers allowed inside or on a trailer.

Do not allow passengers to ride in the trailer. Doing so puts them at risk of injury due to shifting cargo and lack of collision protection.

Before you start towing your trailer remember the number one prevention strategy: Safety First!

Horse Trailer Safety Resource:

- [Right from the Start Horse Trailers](#)



Take the [**Trailer Safety**](#) quiz to test your knowledge!

Resources:

- www.tdi.texas.gov/wc/safety
- www.uthealth.org/swagcenter

- www.nbcdfw.com/news/local/Overtured-Cattle-Truck-Closes-Fort-Worth-Ramp-256329151.html
- www.trailertowingsafety.com/index.html

Disclaimer: The facts and information listed above are merely suggestions for your safety, but are in no way a comprehensive and exhausted list of all actions needed to insure your safety.

*Monthly Blast written by our Outreach Education Coordinator,
Nykole Kafka Vance, MS, CEP, CHES*

Sharing is caring!



Do you like what you're reading?

Check out past Monthly Blasts on
<https://www.uthealth.org/swagcenter/monthly-safety-blasts>

Produced by the Southwest Center for Agricultural Health, Injury Prevention and Education. For more information, contact us at 903-877-5998 or by email to agcenter@uthct.edu.

Copyright 2017