

Original Article

Evaluation of Sorbent Sampling and Analysis Procedures for Acetone in Workplace Air: Variations of Concentration and Relative Humidity

Jhy-Charm Soo,^{1,*} Ryan F. Lebouf,² William P. Chisholm,¹ John Nelson,¹ Jennifer Roberts,¹ Michael L. Kashon,¹ Eun Gyung Lee,¹ and Martin Harper^{3,4}

¹Health Effects Laboratory Division, National Institute for Occupational Safety and Health (NIOSH), Centers for Disease Control and Prevention (CDC), 1095 Willowdale Road, MS 3030, Morgantown, WV 26505, USA;

²Respiratory Health Division, NIOSH, CDC, Morgantown, WV, USA; ³Zefon International, Inc., 5350 SW 1st Lane, Ocala, FL, USA; ⁴Department of Environmental Engineering Sciences, University of Florida, Gainesville, FL, USA

*Author to whom correspondence should be addressed. Tel: +1-304-285-5859; e-mail: jsoo@cdc.gov

Submitted 25 March 2019; revised 22 August 2019; editorial decision 1 October 2019; revised version accepted 30 October 2019.

Abstract

This study experimentally evaluates the performance of different sorbent tubes for sampling acetone vapor in workplace air. A dynamic atmosphere system produced an acetone alone and a mixture with other analytes containing ~73, 483, and 1898 µg acetone mass loading at 25, 50, and 75% relative humidity (RH) at 25°C. Sorbent samples were analyzed in accordance with OSHA Method 69 (Carbosieve S-III) and NMAM 1501, modified to use Anasorb 747 sorbent. Both methods were modified to include the additional analytes. Additional extraction procedures with and without 1% dimethylformamide and anhydrous magnesium sulfate were included in the modified NMAM 1501 using Anasorb 747. Silica gel sorbent tubes analyzed according to NMAM 2027 were included. There were significant reductions in the recovery of acetone from both Anasorb 747 and Carbosieve S-III collected from air at 75% RH, relative to collection at 25 or 50% RH at very low loading compared with that of samples collected at mid to high loading. Silica gel provided a consistent recovery of acetone at all RHs and in the presence of other chemical interferences at 75% RH. The likely cause of mass dependence may arise from the humidity effect on acetone adsorption onto both beaded active carbon and carbon molecular sieve either in sampling or in analysis. The present study confirms not only previous observations but also adds to the literature showing carbonaceous sorbents are not well suited for sampling ketones at high humidity and low concentration.

Keywords: acetone; beaded active carbon; carbon molecular sieve; silica gel; sorbent tube sampling

Introduction

A convenient and popular approach to sampling volatile organic compounds (VOCs) in breathing zones is to draw air through a tube containing a bed of sorbent, most often a porous adsorbent (Harper *et al.*, 2000). The tube and inner sorbent typically weigh only a few grams and are unobtrusive when clipped to workers' clothes. At the end of the sampling period the adsorbed VOCs are separated from the solid adsorbent by one of two methods, either through solvent extraction or through thermal desorption. Solvent desorption is the most frequently employed method of sample recovery. Thermal desorption has become popular in some countries, but this technique can present problems for the sampling and analysis of highly volatile, reactive or unstable compounds, such as acetone.

Coconut shell charcoal was initially recommended by the National Institute for Occupational Safety and Health (NIOSH) Manual of Analytical Methods (NMAM) 1300 for the measurement of acetone, but this was based on preexisting methods where no account had been taken of relative humidity in the sampled air (NIOSH, 1994). As it became obvious that relative humidity had an important effect on the sampling of polar compounds on coconut charcoal, alternatives were sought (Harper *et al.*, 2000). Carbon molecular sieves (Anasorb CMS and Carbosieve S-III) were evaluated in NMAM 2555, and in the Occupational Safety and Health Administration (OSHA) Analytical Method 69, respectively for the determination of acetone using extraction by carbon disulfide (CS_2) alone or with a cosolvent. Presently, however, Anasorb CMS (carbon molecular sieve) is no longer commercially available. Carbosieve S-III has a fine mesh-size, limiting the range of flow-rates that can be used (OSHA, 1988; NIOSH, 2003).

The effect of the adsorption of water vapor on all aspects of the sampling and analysis of polar molecules is of such importance as to require further investigation. The cocollection of water vapor by the sorbent is important because the concentration of water molecules can outnumber the sampled organic vapor molecules by thousands-to-one at high humidity. This can cause three problems with the sampling and analysis: (i) the water molecules may displace collected organic vapor molecules, potentially leading to premature breakthrough and loss of sample, (ii) the water molecules may be displaced by the desorbing solvent into an immiscible aqueous phase into which polar molecules can partition and be lost to the analysis, and (iii) the water molecules can be involved in reactions with organic molecules on the sorbent surface leading to storage losses. Harper *et al.*

evaluated the effect of humidity on the breakthrough of acetone and 2-butanone collected by three different sorbents, including Anasorb 747 (beaded carbon), Anasorb CMS, and active charcoal (Lot 120), and they reported that no displacement of VOCs by water vapor was observed with the Anasorb CMS. They also noted that losses by reaction on storage, as well as migration of adsorbed molecules between the front and rear sections of the tube, can be slowed through refrigeration of the samples (Harper *et al.*, 1993). Per OSHA Method 69, adding a cosolvent (1% dimethylformamide) to the carbon disulfide (CS_2), and a drying agent (anhydrous magnesium sulfate) are recommended for desorbing acetone samples to improve recovery. However, the additional extraction procedure is a considerable burden on the analyst and inevitably increases the cost of the analysis. In fact, it seemed possible that Anasorb 747 could be used without the cosolvent and drying agent required in the OSHA Method. This work led to the selection of Anasorb 747 for the sampling of 2-butanone according to NMAM 2500 (NIOSH, 1996). Recently, silica gel was adopted in NMAM 2027 to be used for sampling ketones, with recovery by a ternary solvent mixture of methylene chloride/methanol/water (65:33:2) (NIOSH, 2016).

As knowledge of the toxicity of chemicals improves, lower occupational exposure limits are often set and this requires sorbent sampling under conditions of low levels of interferences and improved analyte recovery. All three currently available adsorbents suggested for sampling acetone were selected in this study to confirm the method recovery from test atmospheres at various relative humidities (RHs) and concentration levels (mass loadings). In addition, modifications were made to the analytical procedures with the carbon sorbents to determine whether the cosolvent and drying agent were necessary requirements of the methods. Additional benefits resulting from this study include the incorporation of a single acetone method into multianalyte methods and updating of information on the performance of carbonaceous sorbents for sampling ketones at high humidity and low concentration.

Experimental

Sampling of test atmosphere

Three different sorbent tubes, Anasorb 747 (Cat. No. 226-83, SKC, Inc., Eighty Four, PA, USA), ORBO-91 Carbosieve S-III (Cat. No. 20360, Supelco Sigma-Aldrich, Inc., Bellefonte, PA, USA), and silica gel (Cat. No. 226-10-03, SKC, Inc.) were used to sample from a glass test chamber ($\sim 0.004 \text{ m}^3$), which was placed in a 22- m^3 walk-in environmental chamber (Nor-Lake Enviroliner;

Nor-Lake Scientific, Hudson, WI, USA) similar to that previously described (Coffey *et al.*, 2012; LeBouf *et al.*, 2013; Soo *et al.*, 2018). Three levels of relative humidity (25, 50, and 75% RH) at 25°C were maintained through a Miller-Nelson flow-temperature-humidity control system (Model HCS-501, Assay Technology, Inc., Livermore, CA, USA). Two exposure scenarios were selected. First, the dynamically controlled test atmospheres containing ~10, 60, and 260 ppm acetone concentration (73, 438, and 1898 µg mass loading), which are anticipated to be found in the workplace air, were generated at various humidities, by using a certified specialty gas mixture of acetone with nitrogen as balance (Part No. BL1810125, Ideal Specialty Gases and Analytical Services, Houston, TX, USA) controlled by mass flow controller (Aalborg Instruments, Inc., Orangeburg, NY, USA), to evaluate the performance of sorbent tubes with and without drying agent/cosolvent during the solvent desorption procedure. Second, a known concentration mixture of seven analytes of interest (including acetone) was selected to evaluate the effect of chemical interference by using a certified specialty gas mixture with nitrogen as balance (Part No. BL1607134, Ideal Specialty Gases and Analytical Services) controlled by mass flow controller. The other six analytes (ethylbenzene, methyl isobutyl ketone [MIBK], toluene, *m*-xylene, *p*-xylene, and *o*-xylene) are commonly present in paint manufacturing industries. The proportions of the seven selected analytes in the undiluted test gas mixture reflected the relative levels of OSHA's permissible exposure limit (PEL) for the individual compounds; initial concentrations of each compound were 1000 ppm ± 2% for acetone, 200 ppm ± 2% for toluene, and 100 ppm ± 5% for the other compounds. The final concentration was ~100 times lower (10 ppm acetone), giving a theoretical loading of 73 µg acetone on each tube in each experiment with a 3-l sample. The atmosphere flow rate was ~20 l min⁻¹ within a glass test chamber. Before conducting each experimental trial, a portable Fourier-transform infrared spectrometer (FTIR, DX-4040, Gasmeter Technologies, Inc., Finland) and a handheld photoionization detector (MiniRAE 2000, RAE Systems, USA) were used to ensure that the test atmosphere was properly mixed with conditioned environmental air. Preliminary sorbent tube analysis results showed all seven analytes were uniformly delivered across all sampling ports (Soo *et al.*, 2018). Samples from the challenge atmospheres were pulled through all three sorbent tube types at a flow rate of 50 ml min⁻¹ for 60 min (3 l). A DryCal® DC-Lite device was used to ensure that the difference between pre- and postsampling flow rates was within ±5%. A factorial experimental design was

chosen and performed in the present study. Each experimental trial at each test condition involved three sorbent tube samples and at least 60 consecutive measurements by one portable FTIR. At least three replicate trials of each condition were performed. Note that the silica gel samples were challenged with acetone alone through a test atmosphere generation system at various humidity conditions, whereas in the chemical interference study samples were only taken with silica gel tubes from the mixture of the seven analytes of interest at 75% RH at a temperature of 25°C as a worst case, because silica gel is not normally used to sample these chemicals. (The tube described in NMAM 2027, and which was used in the evaluation of the method, is not identical to SKC 226-10-03. However, sorbent tubes with a similar mass of silica gel in the front section of the tube should provide similar results.)

Solvent extraction during the desorption procedure

As given in [Supplementary Table S1](#) (available at *Annals of Work Exposures and Health* online), the combinations of the two carbonaceous sorbent tubes (Anasorb 747 and Carbosieve S-III) and two analytical methods recommended by OSHA or NIOSH, which included different extraction conditions, were adopted in the present study to evaluate whether dimethylformamide (DMF) and magnesium sulfate are required for analysis of acetone. The front and back sorbent sections were put into separate 4 ml vials, with or without 100 mg of magnesium sulfate. The same tubes were further chemically desorbed with use of 1 or 2 ml of carbon disulfide (CS₂) with or without 1% DMF. For silica gel tube samples, the front and back sorbent sections were put into separate 10 ml vials. The samples were chemically desorbed with use of 5 ml of methylene chloride (65%), methanol (33%), and deionized water (2%) (NIOSH, 2016). Note that the front glass wool was included for analysis with the front section media.

Sample analysis

All samples were analyzed by a NIOSH contract laboratory (Maxxam Analytics, USA). The samples were analyzed using a GC Trace 1310 (Thermo Fisher Scientific, Inc., Waltham, MA, USA) with Flame Ionization Detector. A Zebron ZB Wax column (60 m × 0.32 mm × 0.5 µm) was selected for Anasorb 747 and Carbosieve SIII. A Zebron ZB-1 column (60 m × 0.32 mm × 1.0 µm) was selected for silica gel. The GC-FID conditions used were as follows: flow rates of column injection were 2.8–3.0 ml min⁻¹ (varied by sorbent type), flow rates of outlet split were 20–21 ml min⁻¹ (varied

by sorbent type), a continuous purge flow was 5 ml min⁻¹, the initial oven temperature was 50°C (held for 1 min for silica gel; held for 3 min for Anasorb 747 and Carbosieve SIII), temperature ramp was 10°C min⁻¹ (to 150°C for silica gel; to 230°C for Anasorb 747 and Carbosieve SIII). Samples were provided to the laboratory in three sets, and laboratory control spikes were prepared for each set. Overall, average recovery (%) of laboratory control spikes of acetone with Anasorb 747 (dry, unsampled tubes) varied from 78.0 to 112%, whereas Carbosieve S-III provided ~77.8 to 93.5% average recovery. The average recovery of acetone collected by silica gel varied from 97.5 to 113%. Note that all sorbent tube sample results were corrected for recovery percentage of the laboratory control spikes when recovery was <100%. All blank samples showed results lower than the limit of detection (LOD). The LOD was 0.4 µg for acetone on Anasorb 747 and Carbosieve S-III, whereas the LOD was 3.0 µg for acetone collected by silica gel. The limit of quantitation on Anasorb 747

and Carbosieve S-III ranged from 1.3 to 1.6 µg for all seven analytes. The limit of quantitation for acetone on silica gel was 10 µg.

Statistical analysis

All data were analyzed with JMP software version 13.2 (SAS Institute, Cary, NC, USA). First, descriptive statistics on concentration of acetone for all sorbent samples were calculated. Replicate measures that were collected for each sorbent tube result and variable combination were averaged before the analysis. Measured concentration values from each sorbent tubes were compared with theoretical values (applied values), and mean ratios were calculated. Second, a three-way full factorial analysis of variance was performed to determine whether there were any effects of extraction procedure or humidity on quantification by sorbent sampling methods. All analyses were checked to ensure that the assumptions of the analysis were being met, and all differences were considered significant if probability <0.05. The assumptions

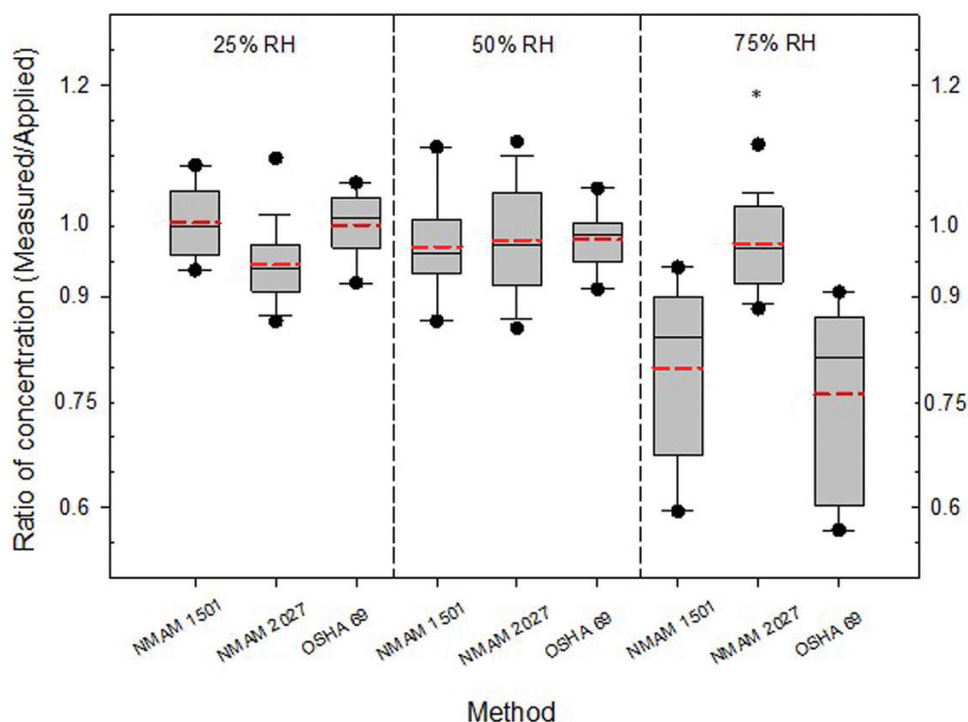


Figure 1. Comparison of ratio of measured acetone concentration to applied concentration under various relative humidities. The horizontal lines in the box plot from bottom to top indicate 10th, 25th, 50th (median), 75th, and 90th percentiles. The circles indicate the 5th (lower circle) and 95th (upper circle) percentiles. Dotted line (red) indicates mean value. The median (or mean) value of each boxplot is taken over measurements from the dynamically controlled test atmospheres containing ~10, 60, 260 ppm acetone concentrations (=73, 438, and 1898 µg loading of acetone anticipated to be found in the workplace). The ratio at 0.75 is the threshold for acceptability recommended by NIOSH or OSHA method. The applied concentration is calculated from its concentration in the standard and the dilution factor. *Statistically significant difference ($P < 0.05$).

of homogeneous variance and normally distributed residuals was examined and found to be satisfied.

Results

Influence of relative humidity

Figure 1 shows the box plots of ratio values of acetone concentration to theoretical values (applied values), grouped according to relative humidity. The differences in the ratios of acetone analyzed according to different methods are not statistically significant ($P > 0.05$) at the low to mid RHs. There were significant losses in the recovery of acetone when the 75% RH samples were analyzed per modified NMAM 1501 and OSHA method 69, relative to the samples at 25 or 50% RH. However, silica gel sorbent tubes analyzed according to NMAM 2027 provided consistent recovery of acetone samples at all RHs. There are statistically significant differences between silica gel with NMAM 2027 and other two sorbents with their corresponding sampling and analytical methods at 75% RH ($P < 0.05$). Note

that the median (or mean) value of each boxplot is taken over measurements from the dynamically controlled test atmospheres containing ~73, 438, and 1898 μg loading of acetone, anticipated to be found in the workplace. Overall, the mean and median value of ratios (i.e. recovery) were above the threshold (0.75) for acceptability recommended by NIOSH or OSHA but they are not above the preferred criterion (90%) recommended by NIOSH and OSHA. Similar results obtained from mixed atmospheres were found at a case of 73 μg loading of acetone (the lowest loading) with other chemical interferences (Supplementary Figure S1, available at *Annals of Work Exposures and Health* online).

Influence of mass loading

The ratio results grouped according to mass loadings are summarized in Fig. 2. Method comparisons across the different loadings produced results similar to those shown in Fig. 1. There are no significant differences

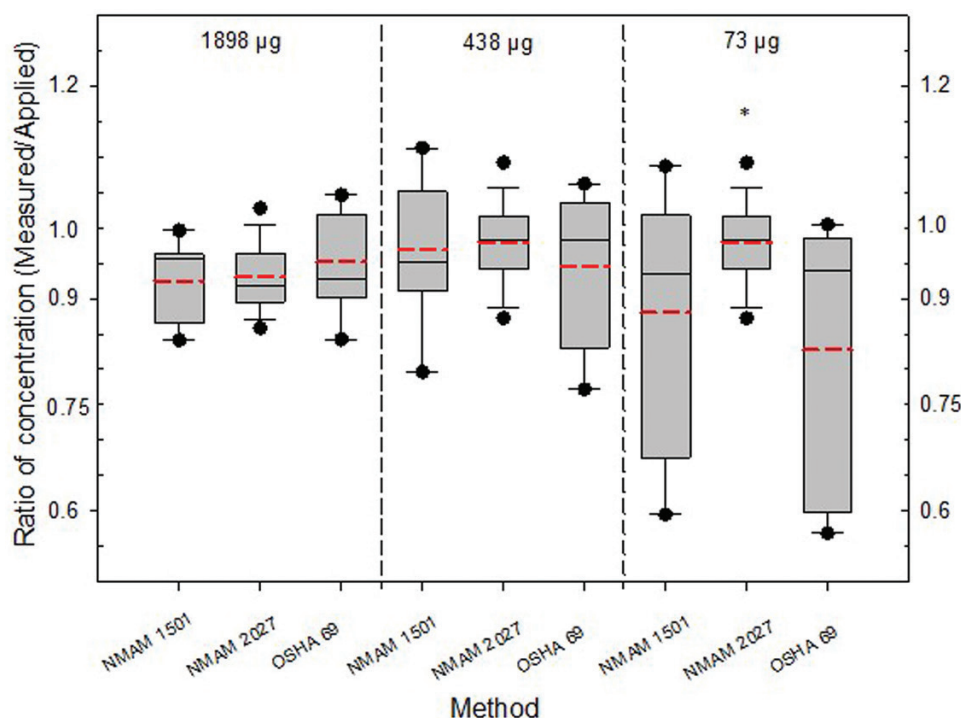


Figure 2. Comparison of ratio of measured acetone concentration to applied concentration under various concentration levels (or loadings). The horizontal lines in the box plot from bottom to top indicate 10th, 25th, 50th (median), 75th, and 90th percentiles. The circles indicate the 5th (lower circle) and 95th (upper circle) percentiles. Dotted line (red) indicates mean value. The median (or mean) value of each boxplot is taken over measurements from the dynamically controlled test atmospheres containing 25, 50, 75% RHs (=5.77, 11.5, and 17.3 mg of water per liter of air anticipated to be found in the workplace) with 1-h sample at 50 ml min⁻¹ (3 l). The ratio at 0.75 is the threshold for acceptability recommended by NIOSH or OSHA method. The applied concentration is calculated from its concentration in the standard and the dilution factor. *Statistically significant difference ($P < 0.05$).

Table 1. The summary of three-way factorial analysis of variance (adjusted $R^2 = 0.911$; RMSE = 0.039; observations = 111; P value < 0.001).

Fixed effect	Level	DF	DF Den	F ratio	Prob > F
RH	3	2	56.3	54.2	<0.0001*
Loading	3	2	55.6	2.76	0.0722
RH × loading	9	4	55.6	9.05	<0.0001*
Method	3	2	56.1	16.4	<0.0001*
RH × method	9	4	56.1	16.3	<0.0001*
Loading × method	9	4	54.6	11.8	<0.0001*
RH × loading × method	27	8	54.6	1.87	0.0832
Random effect	Variance ratio	Variance component	Standard error	Wald P-value	Percent of total
Sample ID	1.03	0.0015	0.0006	0.009	50.8
Residual		0.0015	0.0003		49.2
Total		0.003	0.0005		100

* Statistical significance.

DF, degree of freedom; DF Den, denominator degrees of freedom.

across different observational loading groups through ANOVA analysis (Table 1). But there is no noticeable reduction in recovery of acetone at the very low loading when samples collected by silica gel were analyzed, relative to collection by Carbosieve SIII or Anasorb 747. Overall, both the mean and median values for each method conformed to this 75% acceptability limit while the mean ratio results of modified NMAM 1501 and OSHA method 69 fail to achieve the 90% preferred limit.

Comparison by method

Figures 3–5 compare the ratio of concentration (measured/applied) for each individual method across the different RHs and grouped according to the different mass loadings. In general, all three methods worked well at high and medium mass loadings even at the high humidity condition but only the silica gel tube with NMAM 2027 worked well at low mass loadings and low humidity. Nevertheless, except for the interaction of both factors, the sampling media and analytical method can be considered to have no effect on ratios of measured acetone values to theoretical values. This indicates that the Anasorb 747 with the modified NMAM 1501 determined acetone quite well at the low to mid RH's, thus eliminating the need for DMF and magnesium sulfate, which are necessary when sampling with the Carbosieve SIII and analyzing it by OSHA Method 69 (pairwise correlations = 0.8946). The loss of recovery can be determined as a function of humidity through nonlinear regression as presented in Figs 4(b) and 5(b). The regression coefficients from the nonlinear equations (with cubic term) decreased as RH increased, indicating poor recovery from low loading samples at high humidity. This was observed in both beaded active carbon and carbon molecular sieve adsorbents compared to samples collected by silica gel. The summary of three-way factorial analysis of variance with random effect for illustrating the effects of each parameter and their interaction on method recovery was presented in Table 1. These results suggest that variability among the dependent variables and covariates is dominated while random variation was accommodated by taking each sample ID from repeat measures across different test parameter group. Note that the main effect of loading is not significant in this experiment. However, there are significant interactions between loading and method and loading and RH. With respect to method, the statistical model confirms the silica tubes are unaffected by variation in loading, while the others show a reduced recovery only at low loading. With respect to RH, the silica tubes are again unaffected by changes

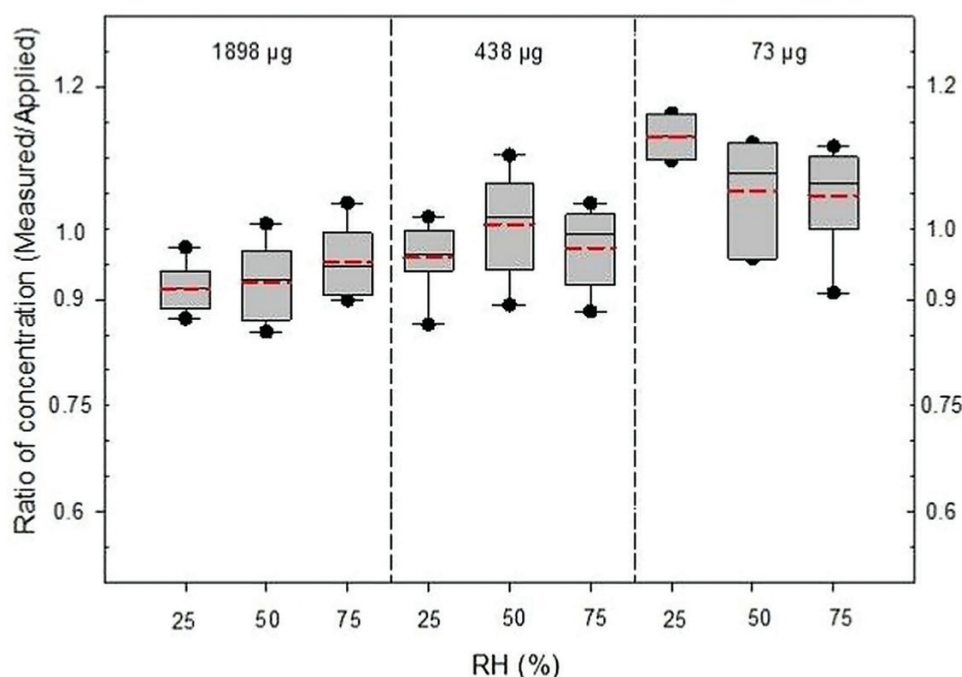


Figure 3. Comparison of ratio of measured acetone concentration to applied concentration under various combinations of concentration levels (or loadings) and relative humidities: *Silica gel sorbent tube with NMAM 2027*. The horizontal lines in the box plot from bottom to top indicate 10th, 25th, 50th (median), 75th, and 90th percentiles. The circles indicate the 5th (lower circle) and 95th (upper circle) percentiles. Dotted line (red) indicates mean value. The ratio at 0.75 is the threshold for acceptability recommended by NIOSH or OSHA method. The applied concentration is calculated from its concentration in the standard and the dilution factor. *Statistically significant difference ($P < 0.05$).

in RH, while the others show reduced recovery at high humidity. Figures 4 and 5 show that this is primarily occurring at low loading and high RH. The assumptions of homogeneous variance and normally distributed residuals was met, indicating the experimental protocol variation was minimal and does not account for the low recovery from the carbonaceous sorbents at 75% humidity.

Discussion

The effect of humidity on the performance of carbon based solid sorbent tubes used to sample VOCs in air has been an issue observed in several studies because the water molecules may occupy the sites in the pores competitively (Dubinin, 1980, 1981; Vermisoglou *et al.*, 2007; Lee *et al.*, 2010; Bradley *et al.*, 2011; Zhang *et al.*, 2017). Helmig and Vierlig (1995) showed that the carbon molecular sieve had a significant water uptake, in particular at $>50\%$ RH. Gawlowaski *et al.* (1999) also reported that either microporous active carbon or carbon molecular sieve sorbent tubes adsorb substantial amounts of water used to sample

VOCs from the atmosphere. As observed in this study, Maceira *et al.* (2017) described humidity problems with carbon-based sorbent tubes. The present study confirms not only previous observations but also adds to the literature showing carbonaceous sorbents are not well suited for sampling ketones at high humidity and low concentrations because the water molecules may occupy the sites in the pores competitively as mentioned previously (Dubinin, 1980, 1981).

The present study confirms that NMAM 2027 has a recovery $>95\%$ of acetone vapor in humid air at 80% RH with 20°C . In contrast, in neither Harper *et al.*, nor in NMAM 2555, nor in OSHA Method 69 was there a failure to recover acetone at high humidity proportional to the magnitudes seen here. It should be noted that neither in Harper *et al.* (1993) nor in OSHA method 69 was the method recovery (or % recovery of storage sample from test atmosphere) at very low loadings of acetone measured. For example the lowest loading in Harper *et al.* (1993) was $530\text{ }\mu\text{g}$. In OSHA method, it was $3548\text{ }\mu\text{g}$. The research presented here supports the position that the humidity issue is concentration (or loading) dependent, so that the previous studies are not wholly invalidated.

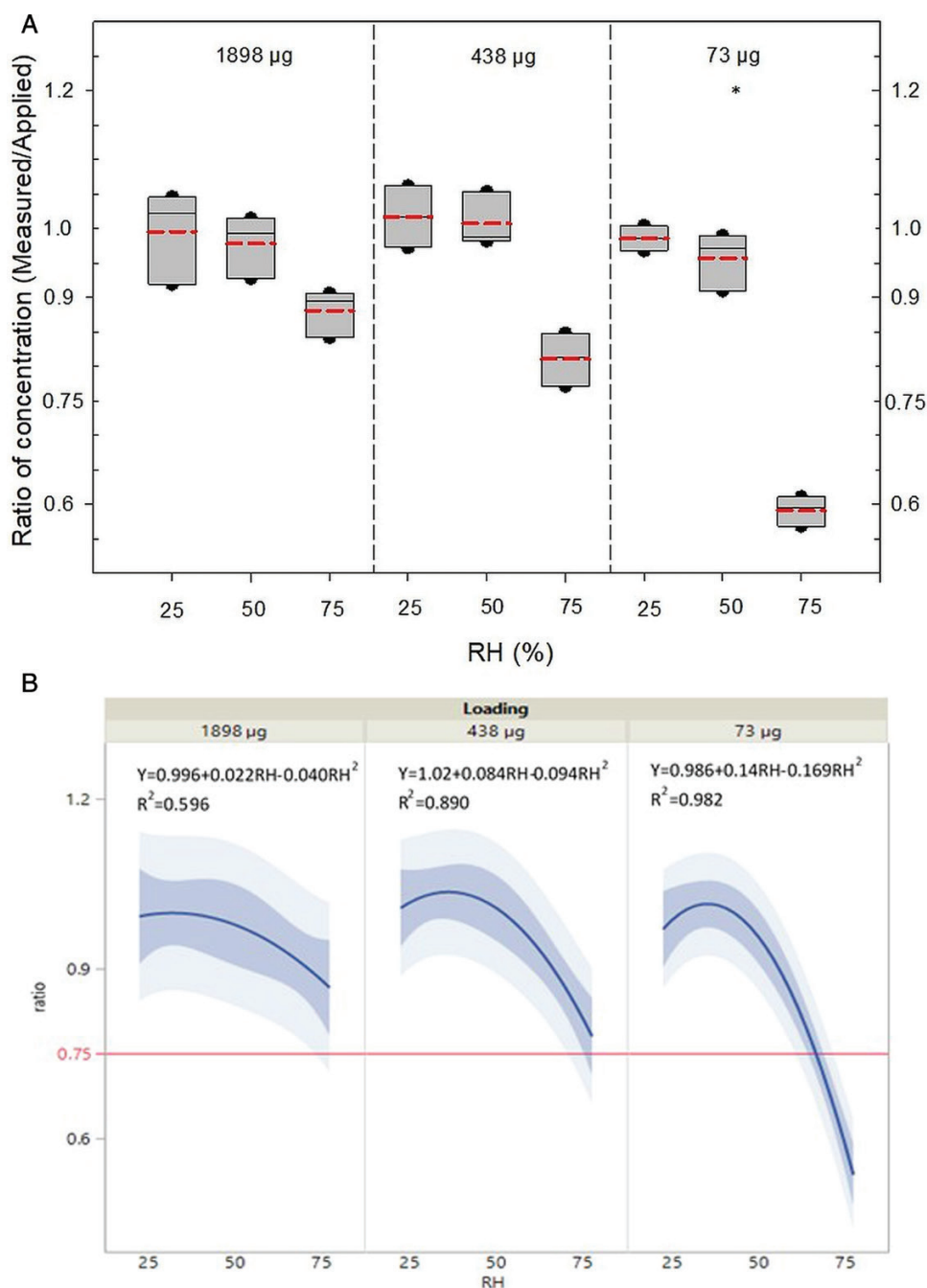


Figure 4. Comparison of ratio of measured acetone concentration to applied concentration under various combinations of concentration level (loading) and relative humidity: *ORBO 91® sorbent tube (Carbosieve SIII adsorbent)* with *OSHA Method 69*. (a) The horizontal lines in the box plot from bottom to top indicate 10th, 25th, 50th (median), 75th, and 90th percentiles. The circles indicate the 5th (lower circle) and 95th (upper circle) percentiles. Dotted line (red) indicates mean value. The ratio at 0.75 is the threshold for acceptability recommended by NIOSH or OSHA method. The applied concentration is calculated from its concentration in the standard and the dilution factor. *Statistically significant difference ($P < 0.05$). (b) The ratio of concentration (measured/applied) as a function of RH at different loading regions, measured and predicted values as indicated in the trend line (or blue shield region) on the forecast plots.

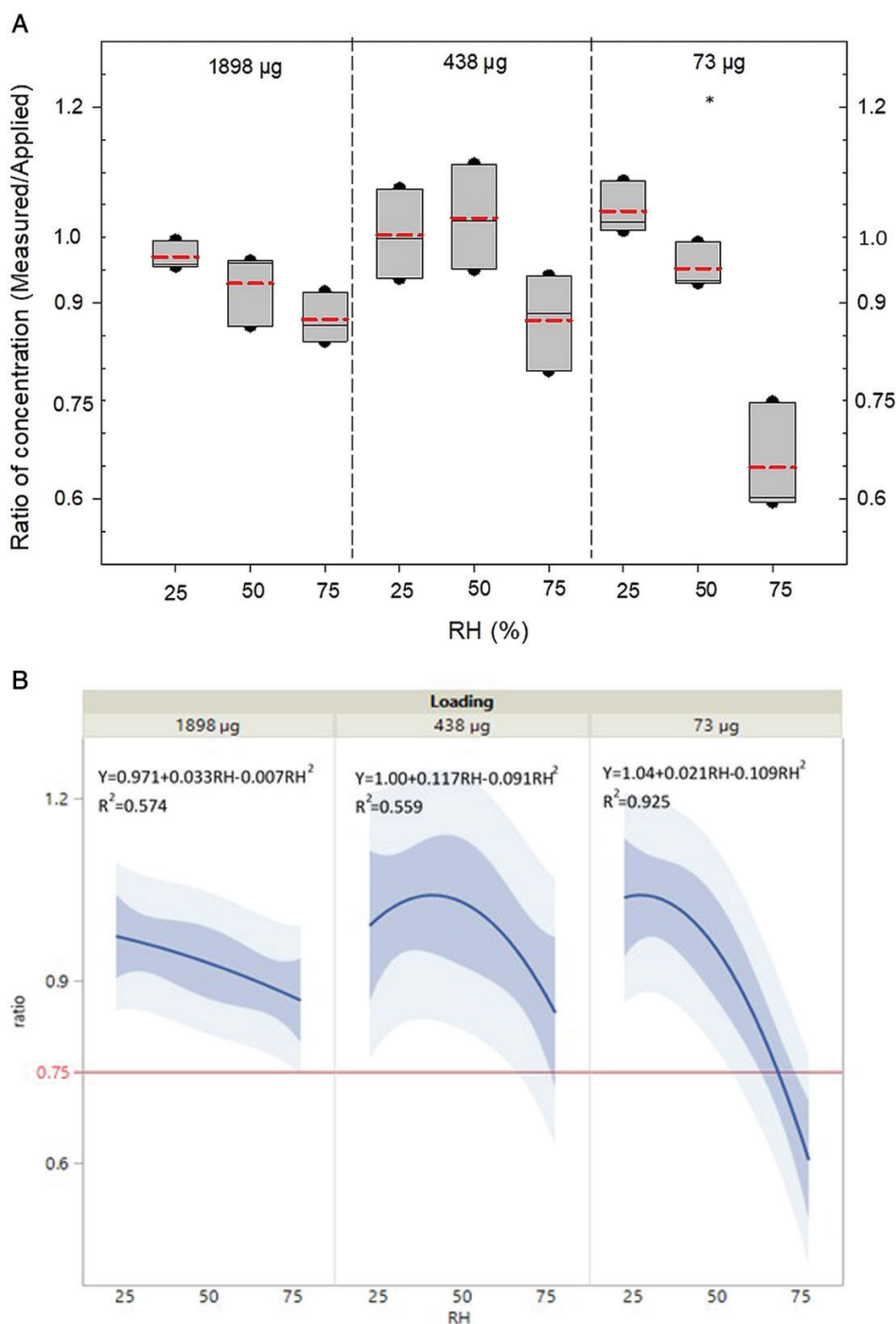


Figure 5. Comparison of ratio of measured acetone concentration to applied concentration under various combinations of concentration level (loading) and relative humidity: *Anasorb 747® sorbent tube (active carbon with low ash content adsorbent) with NMAM 1501*. (a) The horizontal lines in the box plot from bottom to top indicate 10th, 25th, 50th (median), 75th, and 90th percentiles. The circles indicate the 5th (lower circle) and 95th (upper circle) percentiles. Dotted line (red) indicates mean value. The ratio at 0.75 is the threshold for acceptability recommended by NIOSH or OSHA method. The applied concentration is calculated from its concentration in the standard and the dilution factor. *Statistically significant difference ($P < 0.05$). (b) The ratio of concentration (measured/applied) as a function of RH at different loading regions, measured and predicted values as indicated in the trend line (or blue shield region) on the forecast plots.

Conclusions

Our study showed that neither anhydrous magnesium sulfate, nor 1% DMF, alone or together, improved the recovery of acetone from either Carbosieve S-III or Anasorb 747 at low or mid RH as previously noted by Harper *et al.*, but recovery from both sorbents was poor (<75%) with low loading at high (75%) humidity. The present study confirms previous observations that carbonaceous sorbents are not well suited for sampling ketones at high humidity. Our study further showed all methods can be used at high loadings, even at high RH, but only the silica gel tube method works well for low concentrations at high humidity. The method using silica gel for sampling acetone has better recovery of acetone in the situation of low concentrations and high humidity, resulting in a lower expanded uncertainty for the method in this range of conditions.

Supplementary Material

Supplementary data are available at *Annals of Work Exposures and Health* online.

Funding

This project was funded internally by the National Institute for Occupational Safety and Health (Project CAN number: 93909PX).

Acknowledgments

The authors are sincerely thankful to Dr Evanly Vo (National Personal Protective Technology Laboratory/NIOSH) for reviewing the article before journal submission.

Disclaimer

The findings and conclusions in this article are those of the authors and do not necessarily represent the official position of the National Institute for Occupational Safety and Health (NIOSH), Centers for Disease Control and Prevention or the Occupational Safety and Health Administration. Mention of any company or product does not constitute endorsement by NIOSH/CDC.

References

Bradley RH, Smith MW, Andreu A *et al.* (2011) Surface studies of novel hydrophobic active carbons. *Appl Surf Sci*; 257: 2912–19.

Coffey C, LeBouf R, Lee L *et al.* (2012) Effect of calibration and environmental condition on the performance of direct-reading organic vapor monitors. *J Occup Environ Hyg*; 9: 670–80.

Dubinin MM. (1980) Water vapor adsorption and the microporous structures of carbonaceous adsorbents. *Carbon*; 18: 355–64.

Dubinin MM, Serpinsky VV. (1981) Isotherm equation for water vapor adsorption by microporous carbonaceous adsorbents. *Carbon*; 19: 402–3.

Gawlowaki J, Gierczak T, Jezo A *et al.* (1999) Adsorption of water vapour in the solid sorbents used for the sampling of volatile organic compounds. *Analyst*; 124: 1553–8.

Harper M. (2000) Sorbent trapping of volatile organic compounds from air. *J Chromatogr A*; 885: 129–51.

Harper M, Kimberland ML, Orr RJ *et al.* (1993) An evaluation of sorbents for sampling ketones in workplace air. *Appl Occup Environ Hyg*; 8: 293–304.

Helmig D, Vierlig L. (1995) Water adsorption capacity of the solid adsorbents Tenax TA, Tenax GR, carbotrap, carbotrap C, carbosieve SIII, and carboxen 569 and water management techniques for the atmospheric sampling of volatile organic trace gases. *Anal Chem*; 67: 4380–6.

LeBouf RF, Slaven JE, Coffey CC. (2013) Effect of calibration environment on the performance of direct-reading organic vapor monitors. *J Air Waste Manag Assoc*; 63: 528–33.

Lee KJ, Shiratori N, Lee GH *et al.* (2010) Activated carbon nanofiber produced from electrospun polyacrylonitrile nanofiber as a highly efficient formaldehyde adsorbent. *Carbon*; 48: 4248–55.

Maceira A, Vallecillos L, Borrull F *et al.* (2017) New approach to resolve the humidity problem in VOC determination in outdoor air samples using solid adsorbent tubes followed by TD-GC-MS. *Sci Total Environ*; 599–600: 1718–27.

NIOSH. (1994) *Ketones I: Method 1300. NIOSH manual of analytical methods (NMAM), Issue 2*. National Institute for Occupational Safety and Health. Available at <https://www.cdc.gov/niosh/docs/2003-154/pdfs/1300.pdf>. Accessed 1 March 2019.

NIOSH. (1996). *Methyl ethyl ketone: Method 2500. NIOSH manual of analytical methods (NMAM), Issue 2*. National Institute for Occupational Safety and Health. Available at <https://www.cdc.gov/niosh/docs/2003-154/pdfs/2500.pdf>. Accessed 1 March 2019.

NIOSH. (2003). *Ketones I: Method 2555. NIOSH manual of analytical methods (NMAM), Issue 1*. National Institute for Occupational Safety and Health. Available at <https://www.cdc.gov/niosh/docs/2003-154/pdfs/2555.pdf>. Accessed 1 March 2019.

NIOSH. (2016). *Ketones: Method 2027. NIOSH manual of analytical methods (NMAM), Issue 1*. National Institute for Occupational Safety and Health. Available at <https://www.cdc.gov/niosh/docs/2014-151/pdfs/methods/2027.pdf>. Accessed 1 March 2019.

OSHA. (1988). *Acetone: Method 69. OSHA sampling and analytical method*. Occupational Safety and Health Administration. Available at <http://www.osha.gov/dts/sltc/methods/index.html>. Accessed 1 March 2019.

Soo JC, Lee EG, LeBouf RF *et al.* (2018) Evaluation of a portable gas chromatograph with photoionization detector under variations of VOC concentration, temperature, and relative humidity. *J Occup Environ Hyg*; 15: 351–60.

Vermisoglou EC, Georgakilas V, Kouvelos E. *et al.* (2007) Sorption properties of modified single-walled carbon nanotubes. *Micropor Mesopor Mater*; 99: 98–105.

Zhang X, Gao B, Creamer AE *et al.* (2017) Adsorption of VOCs onto engineered carbon materials: a review. *J Hazard Mater*; 338: 102–23.