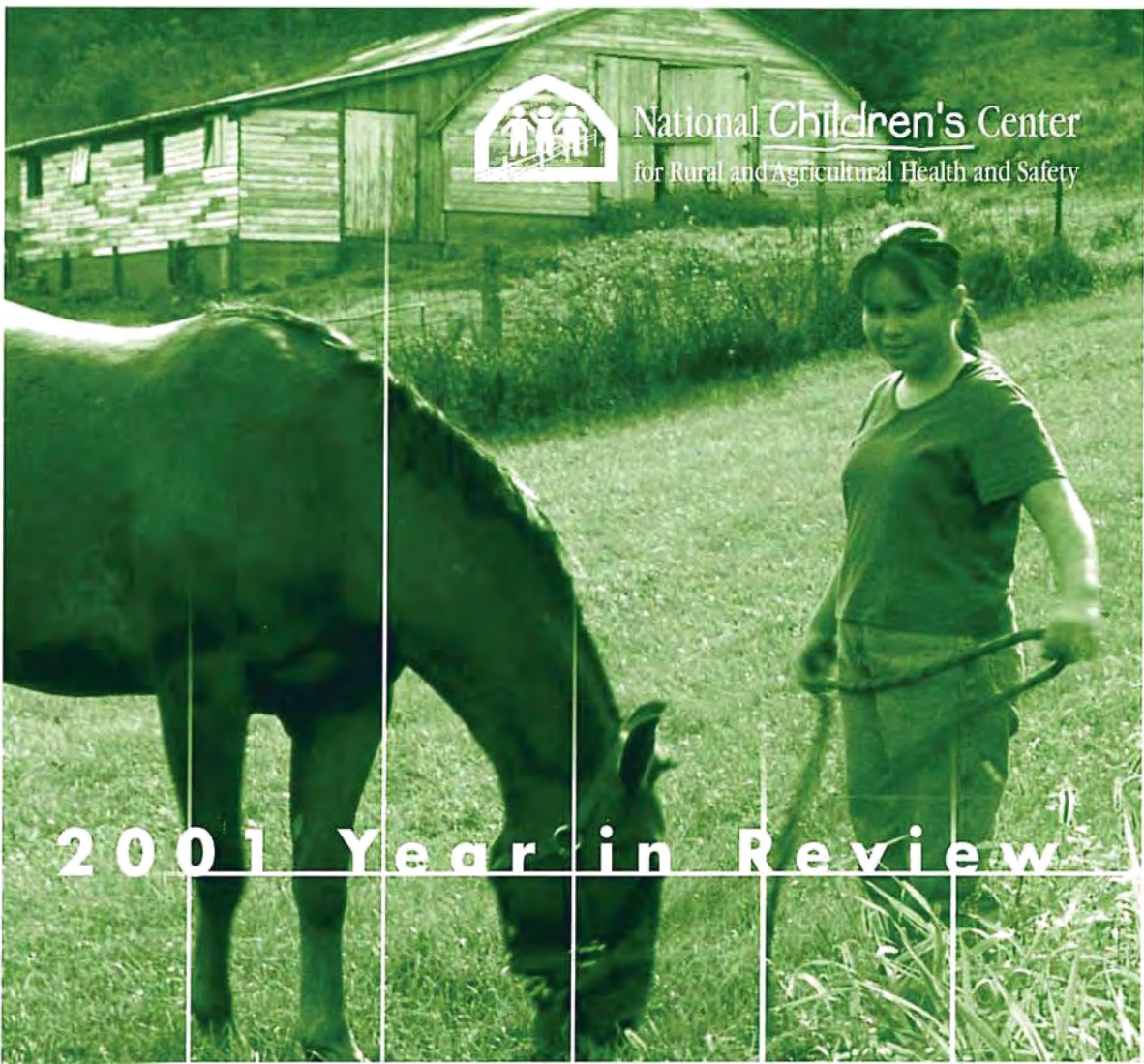
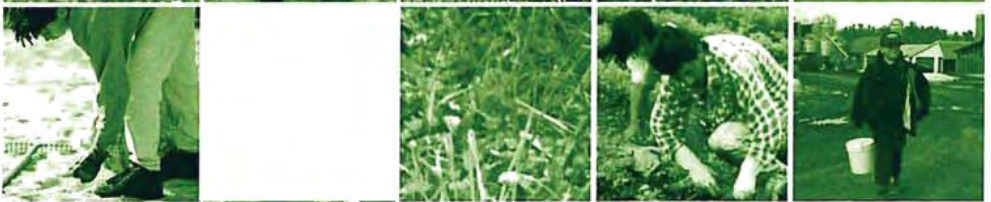
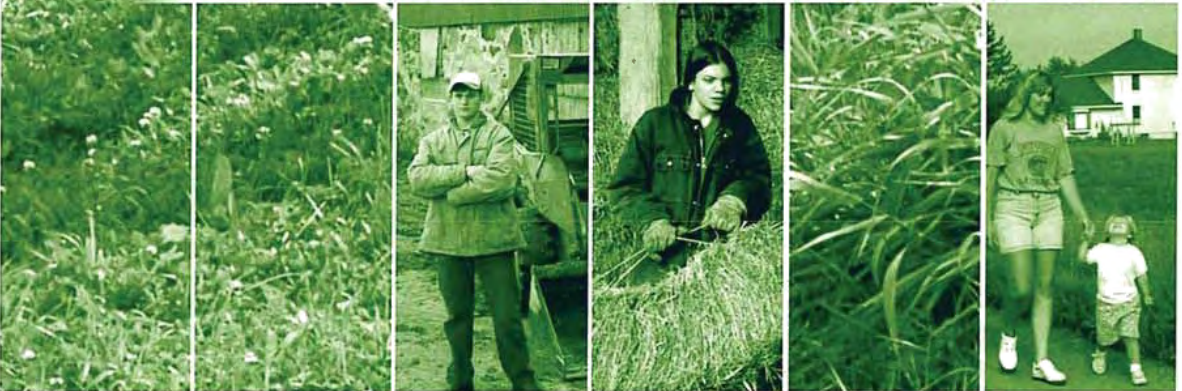




National Children's Center
for Rural and Agricultural Health and Safety



2001 Year in Review



SPONSORED BY:



Mission Statement

The National Children's Center for Rural and Agricultural Health and Safety strives to enhance the health and safety of all children exposed to hazards associated with agricultural work and rural environments.

Letter from the Director



The Year 2001 was immortalized by terrorism that changed our world. Our environment seems more precarious and vulnerable, while each day of life is more treasured and precious. Our nation, communities and colleagues have demonstrated remarkable courage, compassion, generosity and commitment toward securing a safer USA. This is an important era for people working in public health and injury prevention.

This past year has also witnessed the persistence of fatal and nonfatal childhood injuries in rural and agricultural settings. News clippings report the unthinkable, such as "parents lose third child to drowning in farm pond" or "tragedy strikes when 4-year-old falls from tractor" or "teen worker suffocates in grain." These events are mirrored by data from the National Institute for Occupational Safety and Health (NIOSH), Centers for Disease Control and Prevention (CDC), and multiple research studies that reveal the unique factors associated with agricultural disease and injury and their unwitting victims - children who deserve protection and supervision by adults.

Each report that reaches our office generates responses among our staff that include investigative curiosity, provocative discussions, challenges to social norms, increased commitment to searching out effective prevention strategies and, occasionally, intense frustration. As long as rural and agricultural injury events persist, our staff will remain dedicated to their ultimate elimination.

We are pleased to report highlights of the National Children's Center during 2001, including:

- The National Adolescent Farmworker Occupational Health and Safety Advisory Committee released its final report.*
- The 2001 Summit on Childhood Agricultural Injury Prevention conducted extensive information gathering, convened an in-person meeting and posted its draft recommendations on the Internet, seeking stakeholder feedback.*
- We hosted the 2001 Stueland Symposium on "Examining Rural Environments for the Health and Safety of Children."*
- The North American Guidelines for Children's Agricultural Tasks continue to be used by farm families across the US and Canada; and are the focus of NIOSH-funded evaluation research.*
- The Children's Safety Network has expanded its expertise on rural youth violence, rural pedestrian motor vehicle safety and Web site capacity.*
- The consensus-development project, Safe Play Areas on Farms, has been initiated.*
- A Childhood Agricultural Safety Network of nine major organizations was organized to guide national-level child farm safety initiatives.*
- We added four new staff members: Rural Communications Specialist, Education Specialist, Agricultural Safety Network Coordinator and Research Specialist.*
- Staff maintained involvement and leadership roles in national organizations, including the American Public Health Association, the National Institute for Farm Safety and the American Society of Agricultural Engineers.*

We conclude the year pleased with our accomplishments, including many new collaborative efforts; excited about being fully staffed; committed to providing a safe and healthy environment for children and adolescents who live, visit and work in rural America; and extremely appreciative of your support for our work.

Barbara Lee

Barbara Lee, R.N., Ph.D.
Director

2001 SUMMIT ON Childhood



AGRICULTURAL
INJURY PREVENTION

The 2001 Summit on Childhood Agricultural Injury

From diverse backgrounds they brought a common goal: the health and safety of children.

Nearly 90 farmers, growers, professors, physicians, safety professionals and representatives of agricultural organizations participated in the 2001 Summit on Childhood Agricultural Injury Prevention, April 30-May 1, in Brooklyn Park, Minn.

Convened by the National Children's Center, the Summit process culminated by year's end in publication of the Summit report. The report outlines plans for a coordinated, comprehensive effort to prevent agriculture-related injuries among children and adolescents who live on, visit and/or work on farms and ranches.

Summit recommendations were built upon the National Action Plan of 1996.

Key points include:

- Recommendations are proposed within the framework of: a) non-working children, b) working children and adolescents, and c) infrastructure and leadership.
- Wherever possible, evaluation strategies should be applied to existing and new approaches; and evaluation results should drive program modifications.
- Concentrated efforts should be made to enable farm families, rural schools, farm organizations, agribusinesses, and university agricultural training programs to plan and implement these recommendations.
- Innovative strategies that capture the diversities of people and production methods involved in agriculture should be matched to changes in the farm workforce, community and social support networks, and external forces (e.g. economy) affecting U.S. agriculture.
- Communication of successes and failures regarding research and program activities should be shared to maximize progress toward achieving our goals.

The Summit was made possible by a federal appropriation championed by U.S. Sen. Herb Kohl, of Wisconsin.

The 2001 Summit report can be viewed and downloaded by going to <http://research.marshfieldclinic.org/children/>

2



ABOVE: Susan Gallagher, M.P.H., Summit Chair.
RIGHT: Kevin Paap, Vice President, Minnesota
Farm Bureau Federation. FAR RIGHT: Senator
Herb Kohl and Barbara Lee, R.N., Ph.D, Director,
National Children's Center



National Adolescent Farmworker Occupational Health and Safety Advisory Committee

An estimated 140,000 migrant and seasonal farm laborers in the United States are between the ages of 14 and 17 years. A large and growing proportion of this population are single males who lack adult guardianship and are working in agriculture for the first time.

Recognizing the unique safety and health needs of this group, the National Children's Center convened the National Adolescent Farmworker Occupational Health and Safety Advisory Committee (NAFOHSAC). This multi-disciplinary team included health care providers, farmworkers, parents, adolescent community groups, non-government organizations, federal agency representatives and agricultural employers.

The committee published a planning tool, the NAFOHSAC report, in November 2001. Its recommendations are designed to:

- Reduce risk of occupational injuries and diseases resulting from exposures to agricultural work environments.
- Promote knowledge and skills in agricultural health and safety for hired migrant and seasonal adolescent farmworkers.
- Encourage constructive, prosperous and health beginnings to work life for hired adolescent farmworkers.

To view and download the NAFOHSAC report, go to <http://research.marshfieldclinic.org/children/> To order a bound copy, phone 800-662-6900 or 715-389-4999.

Childhood Agricultural Safety Network

The Childhood Agricultural Safety Network held its first meeting in November, when nine organizations gathered via conference call with the intent of leading national-level child farm safety initiatives in a manner that is geographically and ethnically diverse. The first in-person meeting was scheduled for January 2002.

The Network has its roots in the 1996 Action Plan, which called for a gradual transitioning of leadership away from the National Institute for Occupational Safety and Health (NIOSH) and into other hands.

Since then, several organizations have made progress addressing children and farm safety issues and raising awareness. But the premise of the Network is that better coordination of efforts will lead to better efficiency, improved results and safer children.

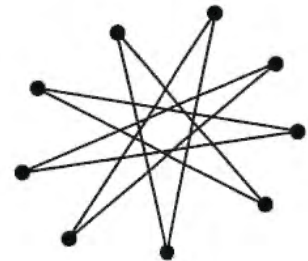
The Network is facilitated by the National Children's Center, with funding from NIOSH. Members include: Farm Safety 4 Just Kids, Migrant Clinicians Network, National 4-H Council, National Center for Farmworker Health, National FFA, National SAFE KIDS Campaign, National Safety Council and Progressive Farmer Foundation.

Objectives include development and dissemination of an ongoing public education campaign spanning beyond National Farm Safety and Health Week; building capacity within organizations to address childhood agricultural injury prevention; and collectively exerting influence on external groups to adopt child farm safety programs.

MIGRANT AND SEASONAL HIRED ADOLESCENT FARMWORKERS: A PLAN TO IMPROVE WORKING CONDITIONS

Recommendations from the National Adolescent Farmworker Occupational Health and Safety Advisory Committee

November 2001





ABOVE: Barbara Marlena, R.N., Ph.D., National Children's Center and Frances Henderson, R.N., Ed.D., Alcorn State University

NORTH AMERICAN
GUIDELINES FOR



children's
AGRICULTURAL TASKS



4

North American Guidelines for Children's Agricultural Tasks

Since being made available to the public in 1999, the North American Guidelines for Children's Agricultural Tasks (NAGCAT) have been disseminated to thousands of farm parents to help them assign jobs that are appropriate and safe for their children's developmental levels.

The guidelines continue to evolve. In November 2001, a meeting was convened to develop a long-range plan for NAGCAT. Attendees included the NAGCAT primary advisors and invited guests who are involved in research and dissemination activities with NAGCAT.

Perspectives were shared, and "next steps" suggested, in the areas of:

- Content of NAGCAT
- Research using NAGCAT
- Professional training
- Dissemination efforts

The primary advisors are using discussions from the meeting to set priorities for the future. To view the guidelines, go to www.nagcat.org

SafeUSA Focus Forum

Rural issues were featured at the SafeUSA Focus Forum held in Marshfield, Wis., in August, one of seven Focus Forums held throughout the nation. The event was hosted by the National Farm Medicine Center and staffed by the National Children's Center and the Children's Safety Network (CSN). CSN is a program of the National Children's Center.

The Focus Forum drew approximately 75 attendees, more than any of the other six forums. Local findings provided input into the national SafeUSA strategy/action agenda in December in Atlanta. To view Power Point presentations delivered by National Children's Center staff at the national SafeUSA meeting, go to www.marshfieldclinic.org/nfmc/SafeUSA.default.htm

Stueland Symposium

"Examining Rural Environments for the Health and Safety of Children," a new look at the connection between rural land use patterns and the well-being of kids, was the subject of the inaugural Dean T. Stueland Symposium, held in June in Marshfield, Wis.

Although the study of land-use planning and its impact on human health is not new, very little scientific literature addresses land use and subsequent environmental exposure as it relates to youth and rural communities.

Attendees used the words "timely" and "needed" in describing the Symposium.

The Symposium was partially funded by the Dean T. Stueland Endowment Fund, the National Institute for Occupational Safety and Health, the federal Maternal and Child Health Bureau, National Farm Medicine Center, Marshfield Medical Research Foundation and Marshfield Clinic.

Dr. Stueland served as medical director of the National Farm Medicine Center from 1984 until cancer claimed him in January 2000 at age 49.



Staff Summaries



SALLY CUTLER, M.S.

Sally joined the National Children's Center in August as its Education Specialist. She brought with her years of experience in education as well as farming. Since arriving she has provided training to Farm Bureau

Women on the North American Guidelines for Children's Agricultural Tasks, started a national consensus group on the issue of "safe play areas on farms," and attended the National Association of Farm Broadcasters Convention on behalf of the Center. Sally worked with a central Wisconsin group on a rural childcare needs assessment and is collaborating on alternative educational delivery methods utilizing the latest technology.



HOLLY DEBLOIS, M.S.

Holly, Rural Youth Safety Specialist, focused on rural transportation-related and recreational injuries. She helped to plan the second annual Great Lakes Native American Transportation Safety

Conference in Green Bay, Wis., and received the Injury Prevention Partner of the Year award from the Bemidji (Minn.) Area Indian Health Service for her work on the 2000 conference. She created a fact sheet on Rural Youth Pedestrian-Motor Vehicle Traffic Injuries, and updated professional resource packets on equestrian and all-terrain-vehicle safety. Media sought her expertise as well - she was quoted in Parents magazine and interviewed by several print and electronic media outlets across the country. At year's end, Holly announced she had accepted a job in her home state as a research associate at the New Hampshire Institute for Health Policy and Practice.



NANCY ESSER, B.S.

Nancy's role in managing activities associated with the North American Guidelines for Children's Agricultural Tasks continues to evolve. She coordinated distribution of nearly 500 copies of the

Parent Collection, via a grant, to farm families in Wisconsin, and followed with a survey to assess usage. In November she participated in a meeting with primary advisors and invited guests in Santa Fe, N.M., to develop a long-range, strategic plan for NAGCAT. She continues to handle NAGCAT technical assistance requests. Nancy also is helping to develop a guidance document for the National Children Center's "safe play areas on farms" initiative. She delivered oral presentations at the National Institute for Farm Safety and the Interstate Labor Standards Association annual conference.



CHRIS HANNA, M.P.H.

The Children's Safety Network (CSN) was established in 1992 with funds from the federal Maternal and Child Health Bureau (MCHB) as part of a network of resource centers located around the country. Chris serves as Director. The center works to expand and strengthen the capacity of maternal and child health professionals to reduce injuries and violence to children and adolescents living in rural communities. During 2001, Chris expanded his expertise in rural youth violence and suicide prevention, and traveled the U.S. making nine formal presentations to professional audiences at conferences and meetings. Chris' efforts led to selection of Marshfield as the rural site for Focus Forum in preparation for the SafeUSA national strategy meeting. Chris also directed the first Stueland Symposium in June, focusing on land use practices and rural children's health and safety.



SCOTT HEIBERGER

Scott joined the National Children's Center in May as its Rural Health Communications Specialist, bringing with him a background in print journalism. He is responsible for disseminating the Center's research. Primary activities in 2001 included chairing the Center's Web committee, editing its newsletter, coordinating media activities with Marshfield Clinic's Corporate Communications office and overseeing publications such as the Center's year-end report and "Leadership in Agricultural Health," which commemorated the 20th anniversary of the National Farm Medicine Center.



BARBARA MARLENGA, R.N., PH.D.

Barbara completed the third and final year of the NIOSH-funded study, "Work Guidelines: Evaluation of Dissemination Methods," which included nearly 500 farm families in the United States and Ontario, Canada. The study compared the efficacy of the standard dissemination strategy with an enhanced, multi-phased dissemination approach in influencing parents' use of the North American Guidelines for Children's Agricultural Tasks (NAGCAT) when assigning work to their children. Two manuscripts were published and another has reached the review stage. Barbara began an evaluation of NAGCAT using a case series of injuries and has completed the instrument-development stage. She helped lead a NAGCAT long-range strategic planning meeting in November in Santa Fe, N.M. She also did background assessment for the 2001 Summit on Childhood Agricultural Injury Prevention, providing attendees with a review of accomplishments since the National Action Plan was released in 1996.



MARLENE STUELAND

Marlene joined the National Children's Center in late September as its Program Specialist. She is responsible for facilitating all initiatives associated with the new Child Agricultural Safety Network. Marlene grew up on a dairy farm in southwestern Wisconsin and now lives on a hobby farm. She serves in a leadership capacity on a number of governmental boards and is active in a variety of community organizations. The Stueland Symposium is named for her late husband, Dean Stueland, M.D., M.P.H., former medical director of the National Farm Medicine Center.



MARTHA VELA, M.D., PH.D.

A major National Children's Center accomplishment in 2001 was publication of the National Adolescent Farmworker Occupational Health and Safety Advisory Committee (NAFOHSAC) report, an 18-month initiative directed by Dr. Vela. The multi-disciplinary committee generated recommendations on how agricultural employers and federal agencies can provide a safer work environment for migrant and seasonal teen workers in agriculture. NAFOHSAC supporters included the National Council of Agricultural Employers, representing 400 agricultural and grower groups. Dr. Vela left the Children's Center in September to take an Assistant Professor position in the School of Public Health, University of Texas at Brownsville.



JAMIE ZENTNER, M.P.H.

Jamie joined the National Children's Center in October after two years of health education and community development work in rural Guatemala. Prior to her Peace Corps experience, Jamie obtained her Masters in Public Health from Boston University where she concentrated her studies in Health Services and Epidemiology. Jamie said she was attracted to the National Children's Center by the public issues the Center addresses: occupational hazards of agriculture and unintentional injuries that are the leading causes of death in people ages 1 to 34. She provides technical assistance to childhood injury prevention projects, including the evaluation of the North American Guidelines for Children's Agricultural Tasks. She hopes to help modify NAGCAT for ethnically diverse populations, especially migrant farmers.

ADMINISTRATIVE STAFF



Beth Buscher
Center Manager



From Left to right

Mary Oertel
Secretary

Susan Greenwood
Secretary

Tracy Jakobi
Administrative Secretary

Publications

Baker AE, Esser NM, Lee BC. A Qualitative Assessment of Children's Farm Safety Day Camp Programs. *Journal of Agricultural Safety and Health*, 7(2): 89-99.

Marlenga B, Pickett W, and Berg RL. Assignment of work involving farm tractors to children on North American farms. *American Journal of Industrial Medicine*, 40: 15-22.

Marlenga B, Pickett W, and Berg RL. Agricultural work activities reported for children and youth on 498 North American farms. *Journal of Agricultural Safety and Health*, 7(4): 241-252.

Vela Acosta, M.S. and Lee, B. (Eds.) (2001). *Migrant and Seasonal hired adolescent farmworkers: A plan to improve working conditions*. Marshfield, WI : Marshfield Clinic.

Presentations

National SAFE KIDS Leadership Conference

January 28-31; Washington, D.C.

"Youth Riding in Pickup Truck Cargo Areas," Holly DeBlois

ASH-Net Ag Safety and Health Conference

March 2-4; Baltimore

"Children and agriculture: Health and safety update," Barbara Lee

Health Resources and Services Administration Midwest Health Care Conference

March 12-14; Chicago

"Injury Prevention in the 21st Century," Chris Hanna

Wisconsin Farm Center Update Leadership Conference

March 23; Wausau, Wis.

"Ag Health and Safety for Children in the U.S.: Current Initiatives, Major Challenges, and Future Directions," Barbara Lee

Midwest Labor Standards Conference

April 18; Madison, Wis.

"Occupational Safety and Health for Young Workers in Agriculture," Barbara Lee

Marshfield Medical Research Foundation Research Day
April 19-20; Marshfield, Wis.
"Urban-Rural Differences in Child (0-14 years) Pedestrian-Motor Vehicle Traffic (P-MVT) Fatalities," Holly DeBlois

2nd annual Great Lakes Native American Transportation Safety Conference
May 1-4; Green Bay, Wis.
"Identifying and Selecting Intervention Strategies," Chris Hanna

International Injury Control and Safety Promotion
June 6-10; Prague, Czech Republic
"Agricultural Health and Safety for Children in the U.S.: Current Initiatives, Major Challenges, and Future Directions," Barbara Lee

2001 Stueland Symposium: Examining Rural Environments for the Health and Safety of Children
June 12-14; Marshfield, Wis.
"The Safety of Children on Rural Roadways," Holly DeBlois;
"Stacking the Deck: Being Poor, A Kid, and Living in Rural America," Chris Hanna

National Institute for Farm Safety
June 24-27; Pittsburgh
"A Qualitative Assessment of Children's Farm Safety Day Camp Programs," Nancy Esser; "2001 Summit on Childhood Agricultural Injury Prevention," Barbara Lee

National Highway Traffic Safety Administration/ National Organization for Youth Safety Diversity Conference
July 26-29; Universal City, Calif.
"Building Resources to Support Diversity in Rural Communities," Chris Hanna

Wisconsin Crisis State Conference
September 23; Wisconsin Rapids, Wis.
"Profile of Youth (10-20) Suicide in Wisconsin," Chris Hanna

Wisconsin Legislative Subcommittee on Farm and Tractor Safety
September 26; Madison, Wis.
"Perspectives on Childhood Agricultural Injuries," Barbara Lee

Upper Midwest Regional Planning Conference, roundtable discussion
October 3-5; Rock Island, Ill.
"Public Health as a Partner in Land Use Planning," Chris Hanna

American Public Health Association Meeting
October 21-25; Atlanta
"Multi-site randomized controlled trial to evaluate dissemination methods for the North American Guidelines for Children's Agricultural Tasks," paper presented by Barbara Marlenga (co-authors William Pickett, Richard Berg); "Randomized controlled trial to evaluate dissemination methods for the North American Guidelines for Children's Agricultural Tasks: Influence on childhood safety practices on the farm," poster presented by Barbara Marlenga (co-authors William Pickett, Richard Berg)

Interstate Labor Standards Association 37th annual Conference
October 28-October 30; Atlantic City, N.J.
"North American Guidelines for Children's Agricultural Tasks" and "Addressing Accountability for Childhood Agricultural Injuries," Nancy Esser

MCH Federal/State Partnership Meeting: Opening Neighborhood Doors, Strengthening Community Partnerships
October 30-November 2; Washington, D.C.
"What's New and Whatzup with Youth Violence," Chris Hanna

North American Agromedicine Consortium
November 4-6; Charleston, S.C.
"2001 Summit on Childhood Agricultural Injury Prevention: Interim Report," Barbara Lee

Mobilizing for a SafeUSA: A Leadership Conference to Reduce Violence and Injury in America
December 3-5; Atlanta
"Urban-Rural Differences in Child (0-14 years) Pedestrian-Motor Vehicle Traffic (P-MVT) Fatalities," Holly DeBlois; "Adolescent Suicide Rates by Place of Residence in Selected Rural States: Metropolitan vs. Nonmetropolitan Counties," Chris Hanna; "Profile of Self-Inflicted Injury Behaviors of Youth (10-20 years) in Wisconsin," Chris Hanna; "2001 Summit on Childhood Agricultural Injury Prevention: Interim Report," Barbara Lee; "North American Guidelines for Children's Agricultural Tasks," Barbara Marlenga

Exhibits and Conferences Attended

National Highway Traffic Safety Administration Diversity Training Planning Meeting
Jan. 21-22; Washington, D.C.

National Council of Ag Employers
Jan. 31-Feb. 1; Washington, D.C.

Serving Amish & Anabaptist Communities
March 28-30; Walnut Creek, Ohio

Handgun Epidemic Lowering Plan Conference
April 16-18; Atlanta

American Association of Suicidology Annual Conference
April 18-20; Atlanta

National Farmworker Health Conference
April 26-29; San Juan, Puerto Rico

American Industrial Hygiene Association Conference
June 1-5; New Orleans

National Institute for Occupational Safety and Health Review
June 23-29; Washington, D.C.

National Institute for Occupational Safety and Health Review third Biennial NORA Symposium
June 27; Washington, D.C.

American Society of Agricultural Engineers
July 29-Aug. 1; Sacramento, Calif.

USDA Panel Grant Review
August 6-10; Washington, D.C.

SafeUSA Focus Forum
August 8; Marshfield, Wis.

National Association of Farm Broadcasters
Nov. 11-15; Kansas City, Mo.

Steering Committee 2001

MEMBERS

Dorianne Beyer, Esq., L.L.M., J.D.
National Child Labor Committee

Sandi Cihlar
Cihlar Farms

Shelley Davis
Farmworker Justice Fund, Inc.

Sharon Dorfman, S.C.M., CHES
SPECTRA

Elaine Faustman, Ph.D.
University of Washington

Jenifer Felzien
Women Involved in Farm Economics

Susan Scavo Gallagher, M.P.H.
Education Development Center, Inc.

James Gildea
Retired, Nationwide Insurance

Dan Hair, M.S.S., C.S.P.
Zenith Insurance Company

Dave Hansen
Farm Safety 4 Just Kids

Frances Henderson, R.N., Ed.D.
Alcorn State University, Miss.

John May, M.D.
NY Center for Ag Medicine & Health

Jennie McLaurin, M.D., M.P.H.
American Academy of Pediatrics

Jack Odle
Progressive Farmer

Kevin Paap
Paap Farms

Steve Pearson
National Association of Farm Broadcasters

James Rainey
Retired, Farmland, Inc.

Marianne Schlecht
Gempler's Inc.

Tim Size
Rural Wisconsin Health Co-op

Bernie Staller
National FFA Organization

Lorann Stallones, M.P.H., Ph.D.
Colorado State University

Cheryl Tevis
Successful Farming

Donna Thompson, Ph.D.
The University of Northern Iowa

FEDERAL AGENCY REPRESENTATIVES

Stephanie Bryn, M.P.H.
Maternal & Child Health Bureau

David Hard, Ph.D.
NIOSH

Art Kerschner, Jr.
U. S. Department of Labor

Brad Rein, P.E.
USDA/CSREES

FORMAL COLLABORATORS

Farm Safety 4 Just Kids
Contact: Shari Burgus, M.Ed.

Migrant Clinicians Network, Inc.
Contact: Karen Mountain, M.B.A., R.N.

National 4-H Council
Contact: Britt Gumpert, M.A., and Summer Sedlacek

National Center for Farmworker Health
Contact: E. Roberta Ryder

National FFA Organization
Contact: Becky Meyer

National SAFE KIDS Campaign
Contact: Alan Korn, J.D.

National Safety Council
Contact: Pat Pulte, M.S., and Terry Wilkinson, Ph.D.

Progressive Farmer Magazine
Contact: Susan Reynolds, M.S.

YOUTH ADVISORS

Jed Bauer
Marshfield, Wis.

Christin Brown
Wisner, Neb.

Curtis Gerrits
DePere, Wis.

Emily Morehouse
Pawnee, Ill.

Stephanie Russell
Clinton, N.Y.

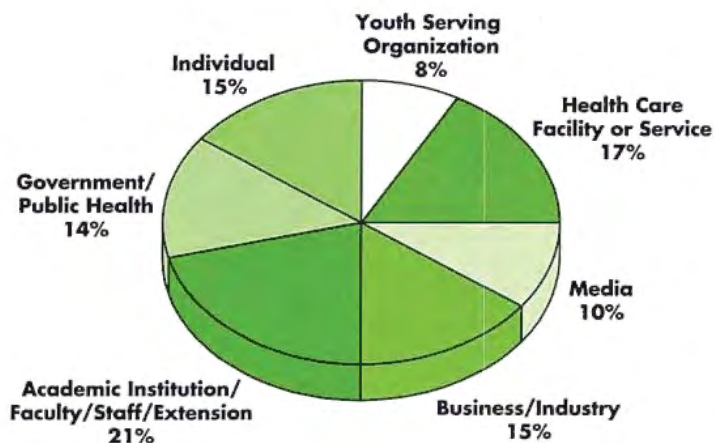
Linda Woods
Barry, Ill.

Joshua Zeithamer
Alexandria, Minn.

Technical Assistance Requests

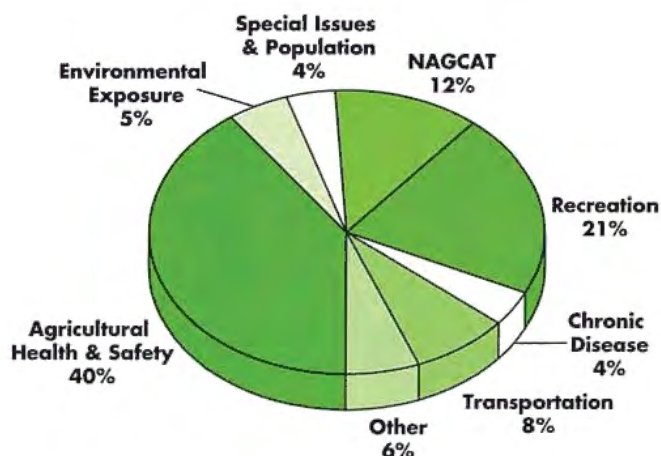
TECHNICAL ASSISTANCE REQUESTS BY CUSTOMERS

January through December 2001
(n = 562)



TECHNICAL ASSISTANCE REQUESTS BY TOPIC

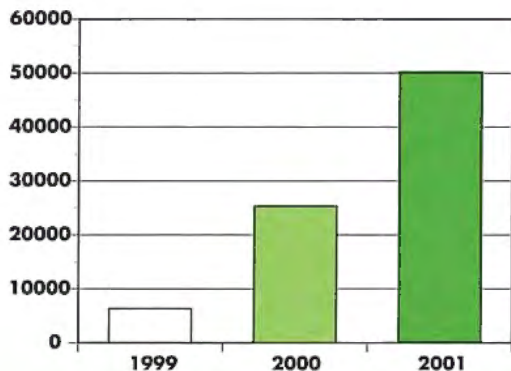
January through December 2001
(n = 562)



Website Use

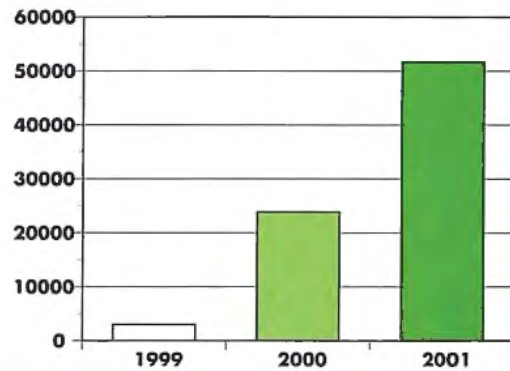
NAGCAT EXTERNAL WEBSITE VISITS

<http://www.nagecat.org/>



NCCRAHS EXTERNAL WEBSITE VISITS

<http://research.marshfieldclinic.org/children/>



The staff of the National Children's center for Rural and Agricultural Health and Safety wishes to acknowledge the support and cooperation of the following:

The National Institute for Occupational Safety and Health (NIOSH award no. (U05/CCU514436-04 and U07/CCU507126-10), Maternal & Child Health Bureau (HRSA contract no. 240-98-0005), the Connor Trust Funds, Association of Farmworker Opportunity Programs, Education Development Center, Farm Safety 4 Just Kids, Migrant Clinicians Network, National Center for Farmworker Health, National SAFE KIDS Campaign, National Safety Council, *Progressive Farmer Foundation*, National Farm Medicine Center and Marshfield Clinic.



National Children's Center
for Rural and Agricultural Health and Safety

1-888-924-SAFE or 715-389-4999
email: nccrahs@mfldclin.edu

<http://research.marshfieldclinic.org/children>
<http://www.nagacat.org>

99-0429 © 2002 Marshfield Clinic

MARSHFIELD CLINIC
NATIONAL FARM MEDICINE CENTER
1000 N OAK AVE
MARSHFIELD WI 54449-5777



National Children's Center
for Rural and Agricultural Health and Safety

Nonprofit
U.S. Postage
PAID
Marshfield, WI
Permit no. 417