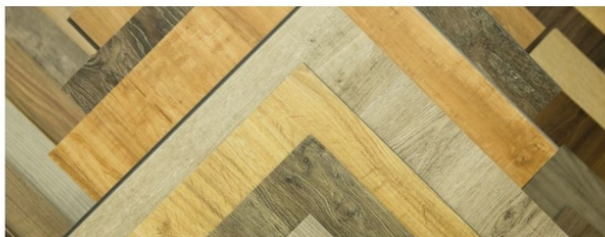


HCD

HEALTHCARE DESIGN
EXPO + CONFERENCE

November 11-14, 2017
Gaylord Palms Resort & Convention Center
Orlando, FL



**innovation +
insight +
inspiration**

Founded and Produced by

EMERALD EXPOSITIONS healthcare design THE CENTER FOR HEALTH DESIGN

Presenting Sponsor

Steelcase HEALTH

In Association with

The American Institute of Architects Academy of Architecture for Health

Association Partners

IIDA INTERNATIONAL INTERIOR DESIGN ASSOCIATION ihcc AMERICAN SOCIETY OF INTERIOR DESIGNERS AS AMERICAN ACADEMY OF HEALTHCARE DESIGN AAHID NIHDI

From inspiring innovations on the show floor to insightful workshops and tours, HCD is the place to be.

Gain **insight** as you network with industry leaders from around the country, find **inspiration** in our exciting exhibit hall, and experience how these cutting-edge **innovations** in design, planning, architecture, and technology positively impact healthcare environments – Now and into the future!

Boasting more than 130 educational sessions and 250+ exhibitors, HCD is your source for the latest research, trends and strategies in healthcare design and operations. Enjoy captivating keynotes, panel discussions, facility tours, and a fascinating glimpse into the newest advancements in healthcare design products and services.

SHOW SCHEDULE

SATURDAY, NOVEMBER 11

8:00 AM – 5:30 PM	Workshops & Associations Sessions
1:00 PM – 4:00 PM	Facility Tours
4:30 PM – 8:30 PM	Facility Tours

SUNDAY, NOVEMBER 12

7:00 AM – 8:00 AM	Breakfast
8:00 AM – 9:15 AM	Welcome and Opening Keynote <i>Sponsored by Steelcase</i>
9:30 AM – 10:30 AM	Conference Sessions
10:45 AM – 11:45 AM	Conference Sessions
12:00 PM – 1:30 PM	Healthcare Design Awards Luncheon
1:45 PM – 2:45 PM	Conference Sessions
3:00 PM – 4:00 PM	Conference Sessions
4:00 PM – 6:30 PM	Opening Reception in the Expo Hall

MONDAY, NOVEMBER 13

7:00 AM – 8:00 AM	Networking Breakfast
8:00 AM – 9:30 AM	The Center for Health Design Awards; Health Environment Awards, Nightingale Awards and Changemaker Award and Keynote Presentation
9:45 AM – 11:45 AM	Conference Sessions
10:45 AM – 2:30 PM	Expo Hall Open
10:45 AM – 11:15 AM	Expo Hall Refreshment Break
11:45 – 1:45 PM	Lunch in Expo Hall
2:00 PM – 3:00 PM	Conference Sessions
3:15 PM – 4:15 PM	Conference Sessions
4:30 PM – 5:30 PM	Conference Sessions
6:30 PM – 9:30 PM	Networking Reception <i>Sponsored by KI</i>

TUESDAY, NOVEMBER 14

6:45 AM – 8:00 AM	Breakfast and Keynote Panel
8:00 AM – 9:00 AM	Conference Sessions
9:15 AM – 10:15 AM	Conference Sessions
10:30 AM – 1:00 PM	Expo Hall Open
11:45 AM – 12:45 PM	Lunch in Expo Hall
1:15 PM – 2:15 PM	Conference Sessions
2:30 PM – 3:30 PM	Closing Keynote

KEYNOTE PRESENTATIONS

SUNDAY, NOVEMBER 12

8:00 A.M. – 9:15 A.M.

WELCOME AND OPENING KEYNOTE

K01 - Disruptions in Healthcare Design – The Good News



Speaker: Dr. Nicholas J. Webb, Futurist, Technology CEO, Award-Winning Inventor, Number One Bestselling Author

MONDAY, NOVEMBER 13

8:00 A.M. – 9:30 A.M.

K02 - The Center for Health Design Changemaker Presentation



Speaker: Dr. Mardelle McCuskey Shepley, B.A., M.Arch., M.A., D.Arch., Professor, Cornell University Department of Design and Environmental Analysis

TUESDAY, NOVEMBER 14

6:45 A.M. – 8:00 A.M.

K03 - Alignment of Priorities for Health Care Design: A Panel Discussion



Moderator: Vincent Della Donna, AIA, ACHA, President Elect, AIA Academy of Architecture for Health

2:30 P.M. – 3:30 P.M.

K04 - Unmistakably Creative: Elements that Foster Inspiring and Engaging Experiences



Speaker: Srinivas Rao, Host and founder of The Unmistakable Creative Podcast and author of Unmistakable: Why Only Is Better Than Best

REGISTRATION AND FEES

	Early Sept 30	Advanced Oct 1 – Nov 4	Regular Nov 5 – Nov 15
Full Conference	\$1,299.00	\$1,499.00	\$1,649.00
Expo Only	\$249.00	\$349.00	\$449.00
Guest (only available with purchase of full conference)	\$299.00	\$349.00	\$399.00
Single Day Conference	\$975.00	\$1,099.00	\$1,249.00
Government Full Conference (credentials/ID required)	\$1,199.00	\$1,235.00	\$1,275.00
Student Conference	\$499.00	\$549.00	\$599.00
Educator Conference	\$599.00	\$649.00	\$699.00
Facility Tours	\$75.00	\$100.00	\$150.00

For additional show details and to register, visit HCDexpo.com

PRE-CONFERENCE WORKSHOPS

These in-depth clinics offer a rich, hands-on opportunity to interact with industry thought leaders on key topic areas. Each offers an intensive immersion into the subject matter, with high levels of interactivity with speakers and other attendees. Space is limited and on a first-come, first-served basis.

SUNDAY, NOVEMBER 12

8:00 A.M. – 3:00 P.M.

W01 - Coaching Workshop: Practical Application of Evidence-Based Design

Donna Deckard, BSN, MPA, EDAC, Director of Strategic Projects, The Center for Health Design; Melissa Piatkowski, MS, EDAC, Research Associate, The Center for Health Design; Alberto Salvatore, AIA, NCARB, EDAC, Associate Principal and Healthcare Practice Leader, Perkins + Will; Margaret Calkins, PhD, EDAC, Executive Director, The Mayer-Rothchild Foundation

Once you register for this workshop, The Center for Health Design will contact you to complete a questionnaire prior to attending the session. This information will be used to match you with a coach and other colleagues. In addition, each attendee receives a bundle of EBD books and resources from The Center for Health Design (\$250 retail value). Registration is \$395/person with a 20 percent discount for EDAC Champion and Advocate firms. Space is limited to 40 participants on a first-come, first-served basis. Participants are invited to attend the EDAC Examination Prep Workshop, which follows this session, for no additional fee.

This pre-conference workshop is hosted by The Center for Health Design.

8:00 A.M. – 12:00 P.M.

W02 - Using Full-Scale Mock-ups to Evaluate Room Concepts

Scott Huff, Senior Associate, Buildings Sector Leader, Stantec; Tasso Karras, NCIDQ, Senior Associate, Stantec; NIHD representatives

This pre-conference workshop is hosted by the Nursing Institute for Healthcare Design.

9:00 A.M. – 10:30 A.M.

W03 - Lean Construction for Executives

Eric Hedlund, EVP, Chief Operating Officer, Building Group, Sundt Construction Inc.; Jeff Esgar, CPC, LEED AP, CM-Lean, Sr. Project Manager, Sundt Construction Inc.

This pre-conference workshop is hosted by the Associated General Contractors of America.

9:00 A.M. – 11:00 A.M.

W04 - The Code Interpretation Clinic

Scott Miller, NCARB, FACHA, Architect, Wold A/E; Rebecca Lewis, FAIA, FACHA, Principal and Director of HealthCare Studio, DSGW Architects; Skip Gregory, NCARB; Bob Dehler, P.E., Engineering Program Manager, Minnesota Department of Health

This pre-conference workshop is hosted by the AIA Academy of Architecture for Health.

3:15 P.M. – 5:15 P.M.

W05 - Applying BIM to FM is Simpler Than You Think: The Right Questions and Simple Data Sets to Get You Started

Meghan Ruffo, AIA, LEED AP, BIM Manager, Carolinas HealthCare System; Allen Angle, VDC-FM Integration Manager, JLL, Technology Solutions; Peter Costanzo, Director, Facilities Management, IMAGINiT Technologies

This pre-conference workshop is hosted by the Health Care Institute (HCI), an Alliance Partner of IFMA

3:30 P.M. – 5:30 P.M.

W06 - EDAC Exam Prep Session

Julie Kent, EDAC, Manager for Facilities Planning and Sourcing, Trinity Health; Upali Nanda, PhD, Assoc. AIA, EDAC, Vice President and Director of Research, HKS; Barbara Dellinger, MA, IIIDA, AAHID, CID, EDAC, NCIDQ, Director, Design and Research, Adventist HealthCare- Shady Grove Medical Center; Donna Deckard, BSN, MPA, EDAC, Director of Strategic Projects, The Center for Health Design

This pre-conference workshop is hosted by The Center for Health Design.

3:30 P.M. – 5:30 P.M.

W07 - Disinfection is One Thing, Eliminating Environment as a Source of HAIs and Low HCAHPS is Everything!

Sarah C. Bell-West PhD, Healthcare Product Manager, Clorox Healthcare; Sylvia Nash, VP Kwalu Healthcare, Kwalu

This pre-conference workshop is hosted by Kwalu.

DEEP DIVES

Deep dive workshops are designed to provide attendees with the opportunity to delve deeper into an array of topics including just-breaking information, initiatives, case studies, and innovative processes. Attendees will enjoy in-depth presentations and will participate in interactive dialogue with workshop speakers and fellow workshop attendees.

SUNDAY, NOVEMBER 12

9:30 A.M. – 11:45 A.M. (with a 15-minute break)

D01 - Texas A&M University First Look Colloquium

1:45 P.M. – 4:00 P.M. (with a 15-minute break)

D02 - Telemedicine: How Virtual Connectivity and Care Are Reshaping Architectural Programming (ACHA Master Series Part 1)

Ray Pentecost, DrPH, FAIA, FACHA, LEED AP, Director, Center for Health Systems & Design, College of Architecture, Texas A&M University; William Persefield, AIA, ACHA, ASHE, NCARB, Director, Healthcare Real Estate, Navigant; Rodney Hill, FAIA, Presidential Professor, Department of Architecture, Texas A&M University

D02 - Application of Telemedicine in Population Health - (ACHA Master Series Part 2)

Connie McFarland, FAIA, FACHA, LEED AP BD+C, President, McFarland Architects; William Sabatini, FAIA, ACHA, Principal, Dekker/Perich/Sabatini; Joseph Johnson, DO, FACOOG,

Associate Dean for Clinical Education and Simulations Medicine, Chief Medical Officer for Project ECHO, Oklahoma State University- Center for Health Sciences

MONDAY, NOVEMBER 13

2:00 P.M. – 4:15 P.M. (with a 15-minute break)

D03 - Lean Clinic Simulation Workshop

Roger Call, AIA, ACHA, LEED AP, EDAC, Director, Healthcare Kaizen Architecture, Herman Miller Healthcare; Kimberly Montague, AIA, EDAC, Manager, Knowledge & Insights, Herman Miller Healthcare; Ross Westlake, EDAC, MS Architectural Research from Georgia Tech; Manager, Major Accounts, Herman Miller Healthcare; Phyllis Goetz, EDAC, National Director, Architecture & Design, Herman Miller Healthcare

D04 - Bridging the Gap: A Common Language for Adapting to Healthcare's Environments of Care

Cathy Dolan-Schweitzer, President, Health Well Done; Richard Thomas, AIA, MBA, Owner, Thomas Advisors; Jerry Smith, FASLA, EDAC, LEED AP, Owner/Principal, Smith:

GreenHealth Consulting; Tom Jung, RA, Owner, Thomas M. Jung Consulting LLC; Alberto Salvatore, AIA, NCARB, EDAC, Associate Principal and Healthcare Practice Leader, Perkins + Will

TUESDAY, NOVEMBER 14

8:00 A.M. – 10:15 A.M. (with a 15-minute break)

D05 - Getting Hands-On: A Virtual Reality Mock-up for Healthcare Facility Design

Jonas Shultz, MSc, EDAC, Human Factors Specialist, Health Quality Council of Alberta; Rajesh Jha, BS, MS, MBA, CEO, SimInsights

D06 - Research Collaboration as Innovation: Moving the Science Forward

Jeri Brittin, PhD, Director of Research, HDR; Adjunct Faculty, University of Nebraska; Kathy Okland, RN, MPH, EDAC, Senior Healthcare Consultant, Herman Miller Healthcare; Juliet Rogers, PhD, MPH, CEO, Blue Cottage Consulting; Assistant Professor in Health Management & Policy, University of Michigan; Kathy Harper, RN, MB, EDAC, Independent Consultant

INTERACTIVE ROUNDTABLE DISCUSSIONS

Interactive roundtables offer a focused yet fun and informal programming experience around an array of topics and interest areas. Through a roundtable format, session leaders will share just-breaking information about the topic at hand and set the stage for a facilitated dialogue between themselves and participants. Technology will be used leading up to, during, and after the event. Plan to listen, ask questions, and share your own thoughts and ideas. Results of these conversations will be shared with you as follow-up from the event.

SUNDAY, NOVEMBER 12

9:30 A.M. – 10:30 A.M.

I01 - Reimagining the Patient Experience: Learning from Nonhealthcare Environments

Phil DeBuzzi, Director, Navigant; Sean Sondej, MHA, Associate Vice President, Heart Services, Duke University Health System

I02 - From Function to Form: How Smart Design Enables Smart Healthcare

Phillip Siek, MBA, CFM, Senior Director, Planning and Construction, Sanford Health

10:45 A.M. – 11:45 A.M.

I03 - Let's Talk Trends, Part 2: What's Next for U.S. Healthcare Facility Design and Construction

Sara Marberry, EDAC, Writer, Blogger, Marketing Consultant, Sara Marberry LLC; Sarah Bader, IIDA, LEED AP, Managing Director/Principal, Gensler

I04 - Healthcare Seating: Is it Safe?

Dave Panning, Director of Technical Services, Business and Institutional Furniture Manufacturers Association; Adam Bedford, PE, Director of Product Development, Steelcase Health

1:45 P.M. – 2:45 P.M.

I05 - Harnessing Evidence and Experience to Change Culture: A Framework for Patient- and Family-engaged Care

Sheila Bosch, PhD, EDAC, Assistant Professor, University of Florida

I06 - To 3P or not 3P, That is the Question

Drew Garst, AIA, LEED AP BD+C, Principal, Boulder Associates Architects; Veronica Tolley, MHA, Assistant Vice President, CCPN Primary and Specialty Services, Cook Children's Physician Network

3:00 P.M. – 4:00 P.M.

I07 - Through the Eyes of Interior Designers: A Deeper Dive into Sustaining Healthcare Environments

Barbara Dellinger, MA, FIIDA, CHID, EDAC, CID, NCIDQ, Director Design and Research, Adventist Healthcare; Helen Lanes, CHID, IIDA, NCIDQ, EDAC, Interior Designer, Inova Health System; Teri Lura Bennett, RN, CID, CHID, IIDA, EDAC, NIH, Lead Interior Designer, Facilities, Architecture and Planning, Johns Hopkins Health System; Andrea Hyde, CHID, MDCID, Director of Design and Architecture, LifeBridge Health System

I08 - Design is Medicine: Upstream Drivers of Health

Lauren Janney, EDAC, LEED AP, Principal Strategist, Lens, Shepley Bulfinch; Matthew Baral, MD, Professor and Chair of Pediatric Medicine, Southwest College of Naturopathic Medicine

MONDAY, NOVEMBER 13

9:45 A.M. – 10:45 A.M.

I09 - PHAMA: A Patient Handling and Movement Needs Assessment Toolkit

James Harrell, FAIA, FACHA, EDAC, LEED AP, Senior Medical Planner, PDT Architects LLC; Regan Henry, PhD, AIA, NCARB, LEED AP, LSSBB, Project Architect, PDT Architects LLC

I10 - Refreshing Improvements: UMass Memorial Health Care's Strategic Recapitalization Vision

David Neal, AIA, ACHA, Principal, The S/L/A/M Collaborative; Dana Swenson, PE, MBA, SASHE, Senior Vice President and Chief Facilities Officer, UMass Memorial Health Care

I11 - Rethinking the Decentralized Nursing Unit

Hui Cai, PhD, Assistant Professor, The University of Kansas; Lindsey Fay, NCIDQ, EDAC, IDEC, Assistant Professor, School of Interiors, College of Design, University of Kentucky

2:00 P.M. – 3:00 P.M.

I12 - Science Meets Style: Dissect, "Dollarize," and Redesign the Patient Room

Sylvia Nash, SHEA, APIC, VP Kwalu Healthcare, Kwalu; Andrea Hyde, Director of Design and Architecture, LifeBridge Health System, Sinai Hospital

3:15 P.M. – 4:15 P.M.

I13 - Using EBD to Improve the Delivery of Care in the Military Health System

Col. Christopher Drum, Chief, Capital Strategy Management Branch, Defense Health Agency Facilities Division; Lt. Glenn Marsh, MS, FHFI, EDAC, USAHFGA/G9, Director Project Planning & Support Division, Defense Health Headquarters, MEDCOM/HFPA; Craig Zimring, PhD, Director SimTigrate Design Lab, Professor, College of Design, Georgia Institute of Technology

4:30 P.M. – 5:30 P.M.

I14 - All For One: Creating a Dynamic Team for an Optimal Healing Environment

Laurel Harrison, Health Sector Leader, Senior Principal, Stantec Architecture; J. Stuart Eckblad, FAIA, Vice President, Major Capital Projects, UCSF Medical Center

I15 - Outside the Box: Rethinking the Design Process to Increase Collaboration and Innovation

Bob Gesing, AIA, Principal, Trinity: Planning Design Architecture; Norma Austin, MBA-HCM, BSN, RN, CEN, CPEN, Director, Emergency/Respiratory Services and Center for Advanced Sleep Studies, Frederick Regional Health System

I16 - Modular Construction in Healthcare Environments

R. David Frum, AIA, ACHA, President, Salus Architecture Inc; Ty Heim, Executive Director of Design, Construction and Facilities Services, EvergreenHealth

TUESDAY, NOVEMBER 14, 2017

8:00 A.M. – 9:00 A.M.

I17 - AIA AAH Architecture + Health Education Forum
 David Allison, FAIA, FACHA, Alumni Distinguished Professor and Director, Clemson University Architecture + Health Graduate Studies

9:15 A.M. – 10:15 A.M.

I18 - AIA AAH Research Forum: A Library of Case Studies in Concert with the Knowledge Repository
 Byron Edwards, AIA, ACHA, EDAC, LEED AP, Professor of Practice, Chair of the AIA AAH Research Initiatives Committee, Clemson University Architecture + Health Graduate Studies; Lindsey Stang, AIA, GGP, Senior Associate, LS3P Associates; Ellen Taylor, AIA, PhD, MBA, EDAC, Vice President of Research, Center for Health Design

1:15 P.M. – 2:15 P.M.

I19 - Crisis Clarity: Reinventing Behavioral Healthcare in the ED
 Daniel Livanec, Principal, Trinity: Planning Design Architecture; Michael McLane, RN, MBA, BSN, Director for Medical-Surgical, Behavioral Health and Nursing Resources, Frederick Memorial Hospital

I20 - Lean and Evidence-Based Design: A Systems Approach for Optimal Outcomes
 Julie Kent, EDAC, Director, Trinity Health; Fernanda Pires, EDAC, Green Belt Certified, Associate/Senior Healthcare Planner, Array Architects; Alberto Salvatore, AIA, NCARB, EDAC, Associate Principal and Healthcare Practice Leader, Perkins + Will; Erin Peavey Hsieh, AIA, LEED AP BD+C, EDAC, Design Researcher, Academy of Architecture for Health Foundation

I21 - Sutter Medical Foundation Roseville Oncology Clinic: Nurturing Relationships Through Design
 Jenny Hastings, IIDA, CID, EDAC, LEED AP Interior Design + Construction, Principal, Boulder Associates Architects; Eric Rasmussen, MBA, RONA Lean Certification, Director, Strategy and Business Development, Sutter Valley Medical Foundation

DID YOU KNOW?

Your full conference pass includes access to all regular and deep dive conference sessions, interactive discussions, keynotes, the luncheon, networking party, and the Expo!

PROGRAM TRACKS



ADVANCEMENTS IN EVIDENCE-BASED DESIGN RESEARCH—offers juried research studies that span the healthcare design environment. Learn the methodologies and approaches used, hear the outcomes, and discuss applications and next steps. Sponsored by



AIA-AAH FORUMS—this series addresses critical topical themes related to major issues and trends in healthcare facility design, and is brought to you by the AIA-AAH thought leaders in the industry.



AMBULATORY CARE ADVANCEMENTS—driven by public health needs and fueled by new policies, these sessions explore new approaches and settings for the steadily expanding arena of ambulatory care.



BEHAVIORAL HEALTH PRACTICES—offers an overview of recent developments in behavioral health and the various environments and design factors that foster effective care.



CLINICAL PERSPECTIVES—offers programs that focus on clinical perspectives and knowledge as they relate to healthcare design. These programs are CE-certified for nursing clinicians, but also applicable to all attendees.



EMPLOYING NEW TECHNOLOGIES—offers case studies for how various technologies can improve care settings and outcomes.



FACILITIES MANAGEMENT—hosted by the Health Care Institute (HCI) of IFMA, this track is offered by leading experts in the field of healthcare facilities management. Discover an array of topics that cover the spectrum of facility management and today's critical issues.



FGI—premieres the 2018 edition of the Facility Guidelines Institute's Guidelines for Design and Construction documents and the critical design implications these revisions have for a host of healthcare environments.



IMPROVING THE PATIENT AND FAMILY EXPERIENCE—shares innovative and effective initiatives and methodologies that enhance the patient/family experience and positively impact satisfaction and health outcomes.



LESSONS LEARNED—tells the stories of providers, design teams, and projects that sought to improve healthcare settings, with valuable lessons learned.



PROGRAMMING, PLANNING, AND DESIGN—addresses a myriad of case studies, methodologies, and outcomes in the healthcare built environment processes. This track offers tools, techniques, and approaches that lead to success.



TRANSFORMATION AND INNOVATION—offers trailblazing projects and approaches that are leading the industry and advancing health outcomes.

EDUCATIONAL PROGRAMS

Educational sessions are designed to provide attendees with the latest information, case studies, and research findings on a myriad of topics. Attendees will enjoy information-rich presentations with opportunities for Q&A.



ADVANCEMENTS IN EVIDENCE-BASED DESIGN RESEARCH

SUNDAY, NOVEMBER 12

9:30 A.M. – 10:30 A.M.

E01 - The Impact of a Hospital Garden on Three Populations

Roger Ulrich, PhD, EDAC, CHD Board Director Emeritus, Professor, Chalmers University of Technology; Teresia Hazen, MEd, HTR, QMHP, Coordinator of Therapeutic Gardens, Legacy Health; R. Serene Perkins, MD, FACS, Director of Clinical Research and Surgery, Legacy Health

10:45 A.M. – 11:45 A.M.

E11 - A Multimethod POE of Nursing Unit Design: The University Medical Center of Princeton at Plainsboro

Hui Cai, PhD, Assistant Professor, The University of Kansas, Department of Architecture; Barbara Christiano, RN, MS, BSN, NEA-BC, Chief Nursing Officer/VP Patient Care Services, University Medical Center of Princeton; Nicholas Watkins, PhD, Manager of Performance Analytics, Gensler; Erin Peavey Hsieh, Associate AIA, LEED AP BD+C, EDAC, Researcher, HKS

1:45 P.M. – 2:45 P.M.

E21 - Using Design to Improve Safety in the Biocontainment Unit

Craig Zimring, PhD, Professor, Director, SimTigrate Design, College of Design, Georgia Institute of Technology; Colleen Kraft, MD, MSc, Associate Professor, Emory University; Jesse Jacob, MD, Associate Professor of Medicine (infectious diseases), Emory University School of Medicine; Jennifer DuBose, MS, EDAC, LEED AP, Associate Director and Senior Research Associate, SimTigrate Design Lab, Georgia Institute of Technology

3:00 P.M. – 4:00 P.M.

E31 - Away from the Nurses' Station and toward the Point of Care: The Influence of the Decentralized Unit

Judi Godsey, PhD, MSN, RN, Director of Nursing Research and Assistant Professor of Nursing, The Christ Hospital Health Network and Xavier University; Deborah Hayes, RN, MS, MSN, NI, NEA-BC, Vice President and Chief Operating Officer, The Christ Hospital; Joan Suchomel, AIA, ACHA, EDAC, Senior Vice President, Cannon Design

MONDAY, NOVEMBER 13

9:45 A.M. – 10:45 A.M.

E41 - Preserving Wayfinding Intelligibility in Growing Healthcare Facilities

Julie Zook, MArch, PhD, Assistant Professor, Texas Tech University, College of Architecture; Mashad Kazem-Zadeh, MArch, PhD student, Texas Tech University, College of Human Sciences, Department of Design; Michelle Ossmann, BSN, MSN, PhD, Director, Healthcare Environments, Steelcase Health

2:00 P.M. – 3:00 P.M.

E51 - Going Solo: A 10-Year Systematic Literature Review Of Single-Patient Rooms

Ellen Taylor, PhD, AIA, MBA, EDAC, Vice President for Research, The Center for Health Design; Melissa Piatkowski,

MS, EDAC, Research Associate, The Center for Health Design; Alan J. Card, PhD, MPH, Research Associate, The Center for Health Design

3:15 P.M. – 4:15 P.M.

E61 - Realizing Improved Patient Care through Human-Centered Design in the OR: Phase 2 Findings

Anjali Joseph, PhD, EDAC, Spartanburg Regional Healthcare System Endowed Chair in Architecture + Health Design, Associate Professor, Clemson University; Sara Bayramzadeh, PhD, Research Assistant Professor, Clemson University; Herminia Machry, Doctoral Student; Deborah Wingler, Doctoral Student

4:30 P.M. – 5:30 P.M.

E71 - An Investigation of Communication Patterns in Centralized and Decentralized Nurses' Station Units

Kevin Real, PhD, Associate Professor, University of Kentucky; Lindsey Fay, NCIDQ, EDAC, IDEC, Assistant Professor, University of Kentucky; Allison Carll-White, PhD, FIIDA, FIDEC, Clay Lancaster Endowed Professor, University of Kentucky; Andy Pilny, PhD, Assistant Professor, Communication, University of Kentucky

TUESDAY, NOVEMBER 14

8:00 A.M. – 9:00 A.M.

E81 - See Something, Do Something: POEs Identify Design Opportunities for Interaction and Awareness in the ED

Zahra Zamani, PhD, Design Researcher, EwingCole; Lloyd Rader, AIA, EDAC, NCARB, LEED AP BD+Ca, Director of Design Corporate Design Services, Novant Health; Hilke Schoonvliet, EDAC, LEED Green Associate, Healthcare Planner, Ewing Cole; Scott Garand, AIA, NCARB, Principal and Healthcare Practice Leader, EwingCole

9:15 A.M. – 10:15 A.M.

E91 - Mental and Behavioral Health Facilities: Critical Research and Design Recommendations

Mardelle Shepley, DArch, FAIA, FACHA, EDAC, LEED AP, Professor, Cornell University; Angela Watson, AIA, LEED AP, Principal, Shepley Bulfinch Architects; Francis Pitts, FAIA, FACHA, OAA, Principal, Architecture+; Anne Garrity, LEED AP, Associate, Shepley Bulfinch

1:15 P.M. – 2:15 P.M.

E101 - Evidence-based Ergonomics for Patient Rooms: Addressing Needs for Staff, Patients, Family, and Visitors

Steve Lavender, PhD, CPE, Associate Professor, Integrated Systems Engineering, The Ohio State University; Elizabeth Sanders, PhD, Associate Professor, Design, The Ohio State University; Carolyn Sommerich, PhD, CPE, Associate Professor, Integrated Systems Engineering, The Ohio State University



AIA-AAH FORUMS

SUNDAY, NOVEMBER 12

9:30 A.M. – 10:30 A.M.

E04 - Laboratory Planning and Design Forum: Research as a Tool to Unite Organizations

Frederick Marks, AIA, LEED AP, Six Sigma Green Belt, Visiting Scholar, Salk Institute for Biological Studies; Edwin Cordes, AIA, LEED AP, Lean Six Sigma Green Belt, Principal and Science and Technology Practice Leader, Perkins+Will

10:45 A.M. – 11:45 A.M.

E14 - Strategic Planning Forum—Brand the Beginning

Gary Collins, AIA, NCARB, Associate Principal, Forum Studio; Lynn Murphy, Director, Planning and Construction, Northwestern Memorial Healthcare; Andrea Grostern, Director, Marketing Operations, Marketing, Communications and Media Relations, Northwestern Memorial Healthcare; Sean Keathley, President, Adrenaline

1:45 P.M. – 2:45 P.M.

E24 - Programming and Planning Forum

Lisa Lipschutz, AIA, ACHA, EDAC, Lean Green Belt, Principal and Senior Healthcare Planner, Array Architects; Fady Barmada, AIA, LEED AP, Lean Six Sigma Green Belt, Principal and Practice Leader, Strategy Advisory Services, Array Advisors

3:00 P.M. – 4:00 P.M.

E34 - Neuroscience and Architecture Forum

Eve Edelstein, MArch, PhD (Neurosci), EDAC, F-AAA Director, Human Experience Lab, Perkins+Will; Diana Anderson, MD, ACHA, Fellow, Human Experience Lab, Perkins+Will



AMBULATORY CARE ADVANCEMENTS

SUNDAY, NOVEMBER 12

9:30 A.M. – 10:30 A.M.

E05 - Recolonizing an '80s Office Building: MedStar's New Ambulatory Care Center

Jason Mueller, Assistant Vice President, Facility Development and Capital Planning, MedStar Health; Laura Babinski, AIA, LEED AP BD+C, Architect, Associate, SmithGroupJJR; Jeff Flicker, AIA, RID, Architect, Principal, SmithGroupJJR

10:45 A.M. – 11:45 A.M.

E15 - Shriners for Children Medical Center: A Paradigm Shift in the Ambulatory Care Model

Chris Dugas, CHC, Corporate Director, Design and Construction, Shriners Hospitals for Children; Fabian Kremkus, AIA, LEED GA, Design Principal, CO Architects; Ron V. Rendina, LEED AP, DBIS, Healthcare Market Lead, DPR Construction; Craig Tompkins, AIA, LEED AP, Principal, SRG Partnership Inc.

1:45 P.M. – 2:45 P.M.

E25 - Case Studies in Exam Room Utilization: What is Realistic?

Kurt Neubek, EDAC, FAIA, FHFI, CFM, LEED AP, CSSBB, Principal, Page; Janet Sisolak, EDAC, Director, Strategic Facility Development, MD Anderson Cancer Center

3:00 P.M. – 4:00 P.M.

E35 - Eliminate Waiting Room Time and Increase Exam Room Utilization

Cheryl Becker, RHIA, CPHA, Manager, Clinic Operations, Aurora Health Care

MONDAY, NOVEMBER 13

9:45 A.M. – 10:45 A.M.

E45 - A New Lease on Life: A Former Hospital as a Healthy Village Hub

Kimberly Caramagno, LEED AP, Lean Six Sigma, Associate, HKS Inc.; Don Damron, MPT, Vice President of Ambulatory Services, OSF Saint Elizabeth Medical Center, OSF Center for Health – Streater; Janhvi Jakkal, AIA, LEED AP BD+C, Associate, Senior Planner, HKS Inc.; Ken Beutke, MHA, MS, President, OSF Saint Elizabeth Medical Center

2:00 P.M. – 3:00 P.M.

E55 - Patients First: Designing the Medical Exam Room with Patients and Clinicians

Julie Rish, PhD, MA, Clinical Psychology, Director, Best Practice, Cleveland Clinic; Travis Tyson, AIA, NCARB, Healthcare Facility Planner, Cleveland Clinic; Josh Miller, DO, Vice President for Regional Family Health Center Operations, Cleveland Clinic; Joseph Strauss, AIA, ACHA, Director of Planning and Design, Cleveland Clinic

3:15 P.M. – 4:15 P.M.

E65 - Team Collaboration Scores for a Pediatric Sports Medicine and Surgery Facility

Beth Carroll, AIA, ACHA, EDAC, LEED AP, Principal, Page Southerland Page; Michael Wiggins, Administrator Children's Health Plano, Children's Health Plano; Chad Gilliland, ATC, Executive Director Andrews Institute Children's Health, Children's Health

4:30 P.M. – 5:30 P.M.

E75 - Surviving in the 21st Century: One Healthcare System's Bold Strategy for Capturing Outpatient Market Share

Erik Andersen, AIA, LEED AP BD+C, Principal, Forum Studio; Dennis Vonasek, AIA, ACHA, CID, Vice President/Principal, HGA Architects and Engineers; Stephen Sugrue, Vice President, Compliance, Real Estate and Audit, Orange Regional Medical Center

TUESDAY, NOVEMBER 14

8:00 A.M. – 9:00 A.M.

E85 - Reinventing a Community Hospital's Outpatient Campus for the 21st Century

Eric Koffler, AIA, NCARB, LEED AP, EDAC, Healthcare Studio Leader, Harley Ellis Devereaux; Tim Brosnan, Vice President of Planning and Community Relations, Palos Health; Sandra McCullough, RN, MBA, Director of Ambulatory and Practice Development, Loyola University Health System; Nick Faulconer, Project Manager, Walsh Group

9:15 A.M. – 10:15 A.M.

E95 - Off-site ED 2.0: MOB Integration, Urban Considerations, and Planning Refinements

Paul Macheske, AIA, ACHA, LEED AP, Vice President of Healthcare Design/Principal and Practice Leader, HuntonBrady Architects P.A.; Aurelio Posada, AIA, Associate Principal/Senior Design Architect, HuntonBrady Architects P.A.

1:15 P.M. – 2:15 P.M.

E105 - Property and Site Acquisition Strategies for Healthcare Facility Development

David Boorne, AIA, LEED AP, System Director, Design and Construction, Norton Healthcare Inc.; Emmett Ramser, PharmD, Vice President, Facilities, Norton Healthcare Inc.; Scott Stanton, Director, Property Planning and Management, Norton Healthcare Inc.

**BEHAVIORAL HEALTH PRACTICES**

SUNDAY, NOVEMBER 12

9:30 A.M. – 10:30 A.M.

E09 - Design for Mental and Behavioral Health

Mardelle Shepley, March, MA, DArch, EDAC, FAIA, FACHA, LEED BD+C, Professor, Cornell University; Samira Pasha, MArch, PhD, AIA, LSSGB, EDAC, LEED BD+C, Senior Designer, CallisonRTKL

10:45 A.M. – 11:45 A.M.

E19 - Walk in their Footsteps: Research into Elders with Neurocognitive Disorders and their Environment

Alanna Carter, NCARB, LEED AP, Principal, HGA Architects and Engineers; Terri Zborowsky, PhD, EDAC, Evidence-based Design Researcher, HGA Architects and Engineers

1:45 P.M. – 2:45 P.M.

E29 - Designing for Adolescents in Mental Health Crisis: A Story of Research, Innovation, and Hope

Jessica Radecki, AIA, LEED AP, Certified Lean Six Sigma Green Belt, Associate Principal, Medical Planner, Clark/Kjos Architects; Angela Naylor, RN, BSN, MHP, Chief Nurse Executive, Behavioral Health, MultiCare Health System

3:00 P.M. – 4:00 P.M.

E39 - The Medical Behavioral Unit: Enhancing Patient Safety and Experience Through Design

Natalie Hagerty, AIA, LEED AP, EDAC, SSGBC, Director of Facilities Planning, Children's Hospital of Philadelphia; Sue Ann Barton, AIA, EDAC, LEED AP BD+C, Principal, ZGF Architects LLP

**CLINICAL PERSPECTIVES**

SUNDAY, NOVEMBER 12

9:30 A.M. – 10:30 A.M.

E03 - Honoring America's Heroes: Integrating Social Science and Design at the New Orleans VA Medical Center

Stephanie Repasky, PsyD, Associate Director, SLVHCS, United States Department of Veterans Affairs; Ryan Hullinger, AIA, Principal, NBBJ

10:45 A.M. – 11:45 A.M.

E13 - Intermountain Healthcare: Planting the Seeds for Change Using Lean Principles

Tim Hatch, MHA, Director of Strategic Planning, Intermountain Healthcare; Barbara Anderson, RN, BSN, MSN, Principal, ZGF Architects LLP; Janet Pangman, Assoc. AIA, Associate Partner, ZGF Architects LLP

1:45 P.M. – 2:45 P.M.

E23 - A Design Bundle for the ED Behavioral Health Exam Room

Meg Louis, RN, MBA, EDAC, Healthcare Operations Planner, BSA LifeStructures; Ellen Post, MHA, EDAC, LEED Green Associate, Interior Designer, BSA LifeStructures

3:00 P.M. – 4:00 P.M.

E33 - Better Together: Multidisciplinary Collaboration Between Academia and Healthcare Organizations to Support EBD

Windsor Sherrill, PhD, MHA, MBA, Associate Vice President for Health Research; Chief Science Officer, GHS; Professor, Public Health Sciences, Clemson University; Kathleen Valentine, PhD, MSN, RN, Professor, Director and Associate Dean, Chief Academic Nursing Officer, GHS, Clemson University; Anjali Joseph, PhD, EDAC, Spartanburg Regional Healthcare System Endowed Chair in Architecture + Health Design; Director, Center for Health Facilities Design/Testing, Clemson University; Susan O'Hara, PhD, MPH, RN, Schools of Nursing and Architecture, Clemson University School of Health Research Embedded Scholar, Clemson University

MONDAY, NOVEMBER 13

9:45 A.M. – 10:45 A.M.

E43 - The "I" Chart: Rethinking Invasive, Interventional, and Imaging Departments

Jennifer Aliber, AIA, FACHA, LEED AP, Principal, Shepley Bulfinch Architects; David Meek, Associate AIA, LEED AP, Associate, Shepley Bulfinch Architects

2:00 P.M. – 3:00 P.M.

E53 - In the Know: New Researchers Present New Research & New Results

Lori Reynolds, PhD, OTR/L, Assistant Professor, Northern Arizona University; Lorissa MacAllister, PhD, BSW, AIA, NCARB, LEED AP, EDAC, Founder, Envia; Jaynelle F. Stichter, DNP, RN, EDAC, NEA-BC, FACHE, FAAN, Professor Emerita of Nursing, San Diego State University

3:15 P.M. – 4:15 P.M.

E63 - A Split-Level Emergency Department: The Only Way to Grow

Miranda Morgan, AIA, NCARB, Senior Associate/Medical Planner, WHR Architects, the healthcare practice of EYP; Lorissa Vinson, MSN, RN, Senior Director Trauma, Emergency Service, EMA, PESN, Emergency Management & Injury Prevention, Children's Medical Center Dallas

4:30 P.M. – 5:30 P.M.

E73 - Therapeutic Behavioral Health Spaces for Children and Adolescents

Dylan McKenney, MD, Medical Director of Child and Adolescent Inpatient Behavioral Services, St. Mary's Health System; Joan Eagleson, AIA, Sage Member, Principal-in-Charge/Senior Associate, Lavallee Brensinger Architects

TUESDAY, NOVEMBER 14

8:00 A.M. – 9:00 A.M.

E83 - Ambulatory Clinic Design to Support Emerging Collaborative Workflows

Ross Westlake, MS Arch, EDAC, Applied Knowledge and Insights, Herman Miller Healthcare; Lisbeth Gierman, BA, MSW, Director of Operations for Duke Primary Care and Duke Urgent Care, Duke Health; Deb Evans, RN, EDAC, Senior Healthcare Consultant at Herman Miller Healthcare, Herman Miller Healthcare

9:15 A.M. – 10:15 A.M.

E93 - The Future of Smart Patient Room Design

Teri Oelrich, BSN, MBA, Partner, NBBJ

1:15 P.M. – 2:15 P.M.

E103 - No Compromises: Fast-Track Hospital Planning that Leverages Engagement Through Innovative Design

Maggie Duplantis, MHA, RN, Director of Clinical Planning and Design, Houston Methodist Hospital; Laurie Waggener, BSRC, RRT, BID, CHID, IIDA, Research and Evidence-Based Design Director, WHR Architects, the healthcare practice of EYP; Haoak Park, ACHA, AIA, LEED AP, Medical Planner, WHR Architects, the healthcare practice of EYP

**EMPLOYING NEW TECHNOLOGIES**

MONDAY, NOVEMBER 13

9:45 A.M. – 10:45 A.M.

E49 - Don't Let Your Smart Building Forget the Patient

Ted Hood, BArch, Principal, Mazzetti+GBA; Joshua Kelly, BS, RCDD, Senior Technology Consultant, Mazzetti+GBA

2:00 P.M. – 3:00 P.M.**E59 - Microhospitals: Key Considerations for Planning and Design**

Phil DeBruzzi, FACHE, Director, Navigant; Thomas Hale, MD PhD, CEO, Virtual Care Solutions LLC; Rod Booze, Principal, Environments for Health

3:15 P.M. – 4:15 P.M.**E69 - Disruptive Technologies: A Transformation of Healthcare Delivery and Design**

Ray Pentecost, DrPH, FAIA, FACHA, LEED AP, Director, Center for Health Systems & Design, College of Architecture, Texas A&M University; Bill Persefield, AIA, ACHA, ASHE, NCARB, Director, Healthcare Real Estate, Navigant; Rodney Hill, FAIA, Presidential Professor, Department of Architecture, Texas A&M University

4:30 P.M. – 5:30 P.M.**E79 - Using Light and Darkness to Improve Sleep and Avoid Circadian Disruption**

Jason Albrecht, MHA, CCLS, Director of Patient & Family Support Services, University of Minnesota Masonic Children's Hospital; Michael White, EDAC, LC, IES, LEED AP, Senior Lighting Designer, Schuler Shook; Patricia Rizzo, IES, LEED AP, Senior Lighting Applications Developer, Philips Lighting Research North America; Helena Molero, MD, Assistant Professor, Department of Pediatrics, Division of Pediatric Pulmonology and Sleep Medicine, University of Minnesota Masonic Children's Hospital

TUESDAY, NOVEMBER 14**8:00 A.M. – 9:00 A.M.****E89 - Army Medicine's Virtual MEDCEN: Planning for the Future**

Mary Savitsky, MS, PMP, ASQ CMQ/OE, EDAC, Deputy Director, Project Planning and Support Division, Defense Health Headquarters, MEDCOM/HFPA; Joshua Barto, CW2, MS, PMP, N+, Space and Equipment Planner, Defense Health Headquarters, MEDCOM/HFPA; Glenn Marsh, LTC, MS, HFH, EDAC, USAHFPA/G9 Director Project Planning & Support Division, Defense Health Headquarters, MEDCOM/HFPA

9:15 A.M. – 10:15 A.M.**E99 - Using Simulation Modeling and Macrocognitive Research to Redesign PICUS**

Susan O'Hara, PhD, MPH, RN, President, O'Hara HealthCare Consultants LLC; Robin Clark, Simulation Specialist/Analyst, President, QMT Group; Vincent Della Donna, AIA, ACHA, Principal, Healthcare Architect, President-Elect, AIA Academy of Architecture for Health; Steve Langston, AIA, ACHA, EDAC, LEED AP, Design Director, RLF

1:15 P.M. – 2:15 P.M.**E109 - Technology Integration and Workflow Optimization in an Academic Pediatric Ambulatory Care Center**

Shiva Mendez, IIDA, LEED BD+C, Vice President, HOK Inc.; Lee Kwiatkowski, BSE, MBA, Director, Ambulatory Transformation, Interim Director, Ambulatory Scheduling, Stanford Children's Health; William Kennedy, MD, Service Chief, Pediatric Urology, Professor, Stanford Children's Health

**FACILITIES MANAGEMENT****SUNDAY, NOVEMBER 12****9:30 A.M. – 10:30 A.M.****E10 - Listening to the Customer: Where's the Coffee?**

Nick Loughrin, Process and Performance Development, The Boldt Co.; Bernie VanCourt, Chief Operating Officer, Bay Area Medical Center; Greg Heiser, Principal, Cannon Design

10:45 A.M. – 11:45 A.M.**E20 - The Bold and Beautiful**

Sid Sanders, BS, MBA, Senior Vice President, Facilities and Construction, Real Estate, Houston Methodist; Maggie Duplant, MHA, BSN, RN, Director, Clinical Planning and Design, Houston Methodist; Jim Hicks, Vice President, Capital Planning, Houston Methodist

1:45 P.M. – 2:45 P.M.**E30 - Engagement Injection: Collaboration that Ensures Great Patient Outcomes**

Cathy Dolan-Schweitzer, President, Health Well Done

3:00 P.M. – 4:00 P.M.**E40 - Akron Children's Hospital's Blueprint to Exceed Patient and Staff Expectations**

William Lichtig, Executive Vice President, The Boldt Co.; Sheryl Valentine, RN, BSN, MBB, MBA, MBOE, Lean Six Sigma Deployment Leader, Akron Children's Hospital; Bernita Beikmann, AIA, EDAC, LSSBB, Principal and Senior Vice President, Director of Lean Strategy, HKS Architects

MONDAY, NOVEMBER 13**9:45 A.M. – 10:45 A.M.****E50 - The Swedish Issaquah Campus: Five Years Later**

Lori Epler Hout, AIA, EDAC, LEED BD+C, Healthcare Market Leader, CollinsVoerman; Beata Canby, Senior Project Manager, Stewardship and Strategic Development, Swedish Medical Center

2:00 P.M. – 3:00 P.M.**E60 - A Proactive Approach to Planning, Prioritizing, and Establishing Funding Needs and Budget Requests**

Chris Dugas, National Director of Design and Construction, Shriners Hospitals for Children Headquarters; Dena Cook, AP BD+C, CDT, Project Manager for Facility Assessments, Heery; Richard Young, Executive Associate, Commissioning Operations Manager, Heery

3:15 P.M. – 4:15 P.M.**E70 - How Reimbursements, Consolidation, and New Care Delivery Models Are Shaping Ambulatory Medicine**

Alan Whitson, RPA, president, Corporate Realty, Design & Management Institute; Kimberly McHugh, Vice President, Projects; Director of Project Operations, Adventist Health; Michael Noto, Senior Vice President, Real Estate Services, Welltower Inc.; Kurt Neubek, FAIA, LEED AP, EDAC, Principal, Page

4:30 P.M. – 5:30 P.M.**E80 - Specifying Doors for Compliance, Aesthetics, Durability & Security in Age of Complicated Digital Controls**

Steve Jones, AHC, FDOI + IQP, President, H. Stephen Jones and Associates

TUESDAY, NOVEMBER 14**8:00 A.M. – 9:00 A.M.****E90 - The Art and Facility Management Science of Improving Patient Care**

Stewart Livsie, FMP, Manager, Maintenance and Construction, UNM Comprehensive Cancer Center; Mary Gauer, CFM, IFMA Fellow, Principal, MDG Consulting

9:15 A.M. – 10:15 A.M.**E100 - Making a Virtual Statement**

Vance Moore, President, Business Integration, Mercy Health; David Hirschbuehler, AIA, LEED AP, BD+C, Associate principal, Forum Studio

1:15 P.M. – 2:15 P.M.**E110 - Crossing International Borders to Problem Solve Healthcare Facilities Headaches**

Walt Vernon, Principal and CEO, MAZZETTI + GBA, board member, Health Care Institute of IFMA, member of the executive council of the International Federation of Healthcare Engineers (IFHE)

**FGI****MONDAY, NOVEMBER 13****9:45 A.M. – 10:45 A.M.****E44 - A Sneak Preview of the 2018 FGI Guidelines: Are you Ready for Change?**

Doug Erickson, FASHE, CHFM, HFDP, CHC, CEO, Facility Guidelines Institute; Dana E. Swenson, PE, MBA, Senior Vice President/Chief Facilities Officer, UMass Memorial Health Care System

2:00 P.M. – 3:00 P.M.**E54 - Improving Security and Safety While Reducing Risk through Design**

Kevin M. Tuohy, CHPA, Board President-Elect, International Association for Healthcare Security & Safety; Thomas A. Smith, CHPA, CPP, President, Healthcare Security Consultants Inc.

3:15 P.M. – 4:15 P.M.**E64 - Noise and Acoustics: What's New in the 2018 FGI Guidelines**

Ed Logsdon, Associate Principal/VP, D.L. Adams Associates, Inc.; Elizabeth Valmont, PhD, Associate, Arup-LA Office

4:30 P.M. – 5:30 P.M.**E74 - Breaking Bad: Resident-Centered Regulatory Improvements**

Jane Rohde, AIA, FIIDA, ACHA, CHID, Principal, JSR Associates Inc.; Steve Lindsey, MSW, CEO, Garden Spot Village; James R. (Skip) Gregory, NCARB, Consultant, Health Facility Consulting

TUESDAY, NOVEMBER 14**8:00 A.M. – 9:00 A.M.****E84 - Get Out! Understanding Outpatient Facility Changes to the FGI Guidelines**

Kirsten Waltz, AIA, ACHA, EDAC, LEED GA, Principal, NBBJ; Tobias Gilk, MRSC, MRSE (MRSC), March, Chairman of the Board of Directors at American Board of Magnetic Resonance Safety, Radiology Planning; Byron L. Burlingame, MS, RN, BSN, CNOR, Senior Perioperative Practice Specialist, Department of Nursing, Association of Perioperative Registered Nurses

9:15 A.M. – 10:15 A.M.**E94 - A New Class Act: The 2018 FGI Guidelines and Major Revisions to Imaging, Procedure, and Operating Rooms**

Bryan Langlands, AIA, ACHA, EDAC, LEED GA, Principal, NBBJ; Tobias Gilk, MRSC, MRSE (MRSC), March, Chairman of the Board of Directors at American Board of Magnetic Resonance Safety, Radiology Planning; Byron L. Burlingame, MS, RN, BSN, CNOR, Senior Perioperative Practice Specialist, Department of Nursing, Association of Perioperative Registered Nurses

1:15 P.M. – 2:15 P.M.**E104 - Sterile Processing Department Design and HVAC Considerations**

Paula Wright, RN, BSN, CIC, Project Manager, Infection Control Unit, Massachusetts General Hospital; Byron L. Burlingame, MS, RN, BSN, CNOR, Senior Perioperative Practice Specialist, Department of Nursing, Association of Perioperative Registered Nurses



IMPROVING THE PATIENT AND FAMILY EXPERIENCE

SUNDAY, NOVEMBER 12

9:30 A.M. – 10:30 A.M.

E06 - Meet Richard: A "Day in the Life" Tool to Measure the Impact of the Built Environment

Marilyn Bellows, RN, BSC, Lean Green Belt Prep, Director, Project Operations Integration, Joseph Brant Hospital; Kate Traianopoulos, Project Manager, Operational Readiness, Joseph Brant Hospital

10:45 A.M. – 11:45 A.M.

E16 - Relieving the Stress of Pediatric Emergency Care

Karen Robichaud, Director of Creative Engagement, Payette; Stuart Baur, AIA, Associate Principal, Payette; Hillary D'Amato, CCLS, Child Life Specialist, MassGeneral Hospital for Children

1:45 P.M. – 2:45 P.M.

E26 - A Culture of Health: Let's Redefine What Health Is

Alberto Salvatore, AIA, NCARB, EDAC, Associate Principal, Perkins+Will; Breeze Glazer, LEED AP BD+C, Senior Associate, Perkins+Will; Robin Guenther, FAIA, LEED Fellow, Principal, Perkins+Will

3:00 P.M. – 4:00 P.M.

E36 - The Art of Healing: An Integrated Approach to Artwork in Healthcare Facilities

Carolyn Fleetwood Blake, IIDA, LEED AP, EDAC, Senior Interior Designer, Gresham, Smith and Partners; Heather Sams, MA, MBA, Senior Art Consultant and Owner, HAS Art Solutions; David Park, SEG, Senior Environmental Graphics Designer, Gresham, Smith and Partners

MONDAY, NOVEMBER 13

9:45 A.M. – 10:45 A.M.

E46 - Let's Play: Designing Playful Environments to Enhance the Patient Experience

Aaron Goldblatt, Partner, Metcalfe Architecture + Design; Hayley Freilich, PMP, Director of Healthcare and Patient Experience, Metcalfe Architecture + Design; Stephanie Rogerick, MS, CCLS, Strategic Operations Manager, Children's Hospital of Philadelphia; Christine Zadarek, Project Manager, Children's Hospital of Philadelphia

2:00 P.M. – 3:00 P.M.

E56 - Stamford Hospital's Planetree Journey

Kathleen Silard, RN, BSN, MS, FACHE, Executive Vice President and COO, Stamford Health System; Stan Hunter, Director, Master Facility Plan, Stamford Hospital; Tushar Gupta, AIA, NCARB, Principal and Senior Designer, WHR Architects, the healthcare practice of EYP

3:15 P.M. – 4:15 P.M.

E66 - Pediatric Healthcare Design: The Benefits of Creative Collaboration

Melissa Flaughter, Senior Facility Designer, Lee Health; Sandra Raak, RID 740, ASID, IIDA, LEED AP, Senior Interior Design Coordinator, Lee Health; Susan Ryckman, MSN, RN, CPNP, CENP, Vice President, Patient Care Services, Golisano Children's Hospital of Southwest Florida/Lee Health System; Hart Johnson, Chief Operating Officer, TivoliToo Inc.

4:30 P.M. – 5:30 P.M.

E76 - Well-being in the Healthcare Environment: From Research to Practice

Mara Baum, AIA, LEED Fellow, EDAC, WELL AP, WELL Faculty, Sustainable Design Leader, Health and Wellness, HOK; Whitney Austin Gray, PhD, LEED AP, Senior Vice President, Delos; Adeleh Nejati, PhD, Assoc. AIA, LEED AP BD+C, EDAC, Medical Planner, HOK

TUESDAY, NOVEMBER 14

8:00 A.M. – 9:00 A.M.

E86 - Through Your Patient's Eyes: Designing a Pediatric Specialty Clinic

Laura Morris, CHID, LEED AP BD+C, IIDA, Lean Green Belt, Principal and Interior Design Director, Array Architects; Kent Doss, AIA, LEED AP BD+C, Lean Six Sigma Black Belt, Regional Vice President, MidAtlantic Region, Array Architects; Nicholas Brady, Student/Nemours Youth Advisory Council member, Nemours Alfred I duPont Hospital for Children; Jacob Brady, Student/Nemours Youth Advisory Council member, Nemours Alfred I duPont Hospital for Children

9:15 A.M. – 10:15 A.M.

E96 - Packard 2.0: Transforming Healthcare to Meet Modern-Day Patients' Needs

Robin Guenther, FAIA, LEED Fellow, Principal, Perkins+Will; Jill Ann Sullivan, RN, MSN, Vice President of Hospital Transformation, Space Planning, and Support Services, Lucile Packard Children's Hospital Stanford; Amy Douma, AIA, LEED AP BD+C, Vice President, HGA Architects and Engineers

1:15 P.M. – 2:15 P.M.

E106 - Managing Hyper-change: Transforming Pediatric Healthcare in Ireland

Eilish Hardiman, Group CEO, The Children's Hospital Group, Ireland; Virender Ahuja, AIA, Global Lead Healthcare Facilities, Accenture



LESSONS LEARNED

SUNDAY, NOVEMBER 12

9:30 A.M. – 10:30 A.M.

E08 - A Year Later: Successes and Challenges to Implementing a Hospital-wide AAU Model

Gretchen Brown, MSN, RN, NEA-BC, EDAC, Interim Associate Chief Nursing Officer, Stanford Health Care

10:45 A.M. – 11:45 A.M.

E18 - The ICONS: Over and Under-Overlooked Projects from Unexpected Designers

Jennifer Aliber, AIA, FACHA, LEED AP, Principal, Shepley Bulfinch; Donald McKahan, AIA, FACHA, Principal, McKahan Planning Group/Behavir

1:45 P.M. – 2:45 P.M.

E28 - Resilience Design: Lessons Learned and Applied

Greg Quinn, PE, LEED AP, Principal, Affiliated Engineers Inc.; Allyn Stellmacher, AIA, LEED AP, Design Partner, ZGF Architects LLP; Sean Lawler, Professional Engineer, LEED AP, Project Manager and Lead Mechanical Engineer, Affiliated Engineers Inc.

3:00 P.M. – 4:00 P.M.

E38 - The Central Nurses' Station Redefined: Maintaining Centrality and Flexibility While Eliminating Clutter

Paige Macfarlan, NCIDQ, LEED ID+C, Healthcare Planner, Francis Cauffman; Kimberly Sargent, BSN, RN, NE-BC, Vice President, Patient Care Services, St. Luke's Miners Hospital; Caitlin Meskill, Interior Designer, Francis Cauffman

MONDAY, NOVEMBER 13

9:45 A.M. – 10:45 A.M.

E48 - Promise Fulfilled: The Military Health System's First EBD Hospital

Clay Boenecke, Chief, Portfolio Management, Defense Health Agency; Richard Repeta, MD, Chief of Staff, Fort Belvoir Community Hospital

2:00 P.M. – 3:00 P.M.

E58 - Florida Hospital Wesley Chapel: Elevating Acute Care Hospital Design

Paul Macheske, AIA, ACHA, LEED AP, VP of Healthcare Design/Principal and Practice Leader, HuntonBrady Architects PA.; Denyse Bales-Chubb, President and CEO, Florida Hospital Wesley Chapel

3:15 P.M. – 4:15 P.M.

E68 - The Art of Storytelling: How the Built Environment Supports an Institution's Brand

Ana Sztyld, NCIDQ, Interiors Coordinator, New York Presbyterian; Christine Vandover, IIDA, NCIDQ, LEED AP, Principal, HDR; Principal, HOK; Sasha Archer, AIA, LEED AP ID+C, WELL AP, Architect, HOK

4:30 P.M. – 5:30 P.M.

E78 - Beyond POE: Leveraging Knowledge Across Firms to Develop a Facility Evaluation Framework

Shahrokh Sayadi, Principal Architect, Sutter Health Facility Property Services; Jeri Briton, PhD, EDAC, Researcher, HDR; Jill Bergman, AIA, ACHA, EDAC, LEED AP, Principal, HDR; Brent Peterson, PE, Six Sigma, Lean Black Belt, Industrial Engineer, HGA Architects and Engineers

TUESDAY, NOVEMBER 14

8:00 A.M. – 9:00 A.M.

E88 - Now What? Managing Construction Changes From Various Stakeholders

Krista Bason, PE, Senior Electrical Engineer, HGA Architects and Engineers; Russ Williams, MHA, Chief Administrative Officer, Seattle Children's Hospital; Camille Helou, MSCM, CHC, HCC, Vice President, Director Healthcare Group, Kraus-Anderson Construction Co.; Robert Dehler, PE, Engineering Program Manager in the Health Regulation Division, Minnesota Department of Health

9:15 A.M. – 10:15 A.M.

E98 - The Results Are In: Learning from the Ideal Infection Prevention Room Prototype

Richard Barnett, Senior Vice President, Colliers International; Paula Wright, RN, BSN, CIC, Project Manager, Infection Control Unit, Massachusetts General Hospital; Robert Peterson, AIA, National Council of Architectural Registration Boards, LEED-Accredited

1:15 P.M. – 2:15 P.M.

E108 - The Award-Winning St. Charles Cancer Center: Lessons Learned Three Years Later

Tom Schumacher, BSN, MHA, Director of Oncology Service Line, St. Charles Health System; Jim Walker, Director of Construction and Real Estate, St. Charles Health System; Karl Sonnenberg, AIA, ACHA, ASHE, Partner for Healthcare, ZGF Architects LLP



PROGRAMMING, PLANNING, AND DESIGN

SUNDAY, NOVEMBER 12

9:30 A.M. – 10:30 A.M.

E02 - Precision Medicine: What Does it Mean for the Facilities that House It?

Laurel Harrison, Health Sector Leader and Senior Principal, Stantec Architecture; Christine Buckley, Vice President, Cambridge CM; Collin Beers, AIA, Senior Principal, Stantec Architecture

10:45 A.M. – 11:45 A.M.

E12 - Navigating an Ocean of Research: Our Top 10 Picks of the Year

Alan J. Card, PhD, MPH, Research Associate, The Center for Health Design; Melissa Piatkowski, MS, EDAC, Research Associate, The Center for Health Design; Ellen Taylor, PhD,

AIA, MBA, EDAC, Vice President for Research, The Center for Health Design

1:45 P.M. – 2:45 P.M.

E22 - Safety and Security: Consideration of Clinical Nurses' Needs in the Design of Critical Care Units

Jaynelle Stichler, DNS, RN, NEA-BC, EDAC, FACHE, FAAN, Research and Professional Development Consultant, Sharp Mary Birch Hospital for Women & Newborns & Sharp Memorial Hospital; Yolanda Keys, DHA, MSN, RN, NEA-BC, EDAC, Associate Professor, Texas A&M University – Corpus Christi

3:00 P.M. – 4:00 P.M.

E32 - Beyond Ebola: Designing a Premier Special Disease Care Unit

Adam O'Brien, AIA, Director of Design, CBLH Design; Kevin Ortnor, PMP, EDAC, Director, Transformation Operations and Transition, The MetroHealth System; Diane Tate-Whitley, IIDA, NCIDQ, LEED AP BD+C, Associate Vice President, Interiors, CannonDesign

MONDAY, NOVEMBER 13

9:45 A.M. – 10:45 A.M.

E42 - Developing the Ethio-American Doctors Medical City, A Tertiary Care Medical Center

Joyce Durham, RN, AIA, Executive Vice President and Senior Partner, Global Health Services Network; Melaku "Mel" Negussie, COO and General Counsel, Ethio-American Doctors Group

2:00 P.M. – 3:00 P.M.

E52

TBD

3:15 P.M. – 4:15 P.M.

E62 - Uncharted Waters: Critical Access 30 Miles at Sea

Jocelyn Stroupe, CHID, EDAC, IIDA, ASID, Director of Healthcare Interiors, CannonDesign; John "Jack" McCarthy, AIA, EDAC, LEED AP, Associate Vice President, CannonDesign; Margot Hartmann, MD, PhD, President and CEO, Nantucket Cottage Hospital, Partners Healthcare

4:30 P.M. – 5:30 P.M.

E72 - 10 Things to Know Before Renovating or Expanding an ED

Catherine Gow, AIA, Principal, Francis Cauffman; Joseph Bushra, MD, FAAEM, NREMT-P, Chief of Emergency Medicine, Main Line Health System, Lankenau Medical Center; Paige Macfarlan, NCIDQ, LEED AP ID+C, Senior Healthcare Planner, Francis Cauffman

TUESDAY, NOVEMBER 14

8:00 A.M. – 9:00 A.M.

E82 - EBD in Action: Moving from Research to Design Innovation

David Allison, FAIA, FACHA, Alumni Distinguished Professor and Director of Graduate Studies in Architecture + Health, Clemson University; Anjali Joseph, PhD, EDAC, Spartanburg Regional Healthcare System Endowed Chair in Architecture + Health and Associate Professor, Clemson University; Byron Edwards, AIA, ACHA, EDAC, LEED AP, Professor of Practice, Clemson University; Rachel Matthews, Graduate Research Assistant, Center for Health Facilities Design and Testing, Clemson University

9:15 A.M. – 10:15 A.M.

E92 - Envisioning Critical Care Acuties in Strategic Expansion

Jill Pearsall, RA, NCARB, Assistant Vice President, Facilities Planning & Development, Texas Children's Hospital; Steve Kopp, AIA, Vice President, Senior Designer/Planner, FKP Architects Inc.

1:15 P.M. – 2:15 P.M.

E102 - Perioperative Space Design: To the PACU and Beyond

Kate Newcomb-DeSanto, MSN, RN, MSW, Clinical Liaison, PennFIRST, University of Pennsylvania Health System; Lauren Valentino, MHA (c), Project Manager, University of Pennsylvania Health System; Shelly Locke, MArch, Senior Healthcare Planner, HDR



TRANSFORMATION AND INNOVATION

SUNDAY, NOVEMBER 12

9:30 A.M. – 10:30 A.M.

E07 - The Key to Success: A Collaborative Multidisciplinary Approach to Facility Activation

Lynn Aguilera, RN, MSNEd, PMP, CPN, Senior Project Manager, HTS Inc.; Kimberly Scurr, RN, MPA, Vice President, Operations, UCSF Benioff Children's Hospital; UCSF Betty Irene Moore Women's Hospital.

10:45 A.M. – 11:45 A.M.

E17 - Piedmont Atlanta Hospital: Building Integrated Design and Construction Teams that Respond to Evolving Care Delivery Models

Amanda Mewborn, RN, CPN, Lean Black Belt, LEED Green Associate, Executive Director, Project Management, Piedmont Healthcare; Rosalyn Cama, FASID, NCIDQ, EDAC, President and Founding Partner, Cama Inc.; Steve Higgs, MHA, Senior Managing Director, CBRE Healthcare; Sheba Ross, AICP, International AIA, LEED AP, CDT, Vice President, Urban Design and Campus Planning, HKS Inc.

1:45 P.M. – 2:45 P.M.

E27 - The Ikitelli Integrated Health Campus: Redefining Healthcare Delivery in Turkey

Jason Harper, AIA, LEED AP, Associate Principal, Senior Medical Planner, Perkins+Will; Mehmet Baytan, MSc, Design Manager, Rönesans Holding; Susana Erpestad, AIA, ACHA, LEED AP BD+C, EDAC, Health Principal at HDR; Derya Çavuş, Director of Architecture, Rönesans Holding

3:00 P.M. – 4:00 P.M.

E37 - BC Children's and Women's Major Redevelopment Project: A Case Study

Eleanor Lee, LEED AP, EDAC, Chief Project Officer and Executive Director, Provincial Health Services Authority; Allyn Stellmacher, AIA, LEED AP, Partner, ZGF Architects LLP; Walt Massey, National Healthcare Practice Leader, Balfour Beatty Construction; Chris Arthur, Senior Vice President, Balfour Beatty Investments

MONDAY, NOVEMBER 13

9:45 A.M. – 10:45 A.M.

E47 - Test Your Code Knowledge

William Koffel, PE, FSFPE, President, Koffel Associates; Margaret Caulkins, PhD, EDAC, Executive Director, Mayer-Rothschild Foundation; Kristin Shifflet, Regulation Writer/Life Safety Code SME, CMS

2:00 P.M. – 3:00 P.M.

E57 - Preparing Healthcare Design Professionals to Create Optimal Healing Environments

Terri Zborowsky, PhD, EDAC, Design Researcher, HGA Architects and Engineers; Susan Ziel, BSN MPH JD, Consultant, Integrity Health Strategies

3:15 P.M. – 4:15 P.M.

E67 - A Task Analysis of Patient-Centered Medical Home Room Functionality and Operational Efficiency

Dina Battisto, PhD, MArch, Associate Professor in the School of Architecture, Clemson University; William Lewis, MArch, Major, United States Army; PhD Candidate in the Planning, Design, and the Built Environment program, Clemson University, School of Architecture, Architecture and Health Graduate Program; Christopher Kiss, AIA, NCARB, EDAC, Lieutenant Colonel, United States Army; PhD Candidate in the Planning, Design and the Built Environment, Clemson University School of Architecture, Architecture and Health Graduate Program

4:30 P.M. – 5:30 P.M.

E77 - Brigham's Building for Transformative Medicine: A Case Study

Sarah Markovitz, AIA, Principal, NBBJ; Kate Henderson, Project Manager, Real Estate and Facilities Planning, Brigham and Women's Hospital

TUESDAY, NOVEMBER 14

8:00 A.M. – 9:00 A.M.

E87 - The "Intent to Impact Approach": Tying Strategy to Outcome in the Built Environment

Kate Renner, AIA, EDAC, Lean Six Sigma CE, LEED AP BD+C, Associate, HKS; Sheryl Valentine, RN, BSN, MBB, MBA, MBOE, Lean Six Sigma Six Leader, Lean Six Sigma Deployment Director, Akron Children's Hospital; Lindsay Todd, EDAC, Vice President, HKS; Rebecca Soja, AIA Associate, Architectural Designer, HKS

9:15 A.M. – 10:15 A.M.

E97 - A Case Study on Using a Tilt-Wall Approach for a Healthcare Facility

Michael Hatton, Vice President, System Facilities Engineering, Memorial Hermann Healthcare System; Richard Morris, President, M Strategic Partners; Steven Schultz, AIA, ACHA, LEED AP, Managing Partner, PhiloWilke Partnership

1:15 P.M. – 2:15 P.M.

E107 - HALs and the Hospital Bed: An EBD Research Model Supported Through Crowdfunding

Peter Sharpe, MBA, EDAC, Vice President, Irwin P. Sharpe & Associates; Michael Schwebler, MBA, RVT, FSVU, President/CEO, Dearborn County Hospital/TriHealth; Michael Schmidt, PhD, Professor and Vice Chair, Department of Microbiology and Immunology, Medical University of South Carolina

FACILITY TOURS

Visit HCDexpo.com for specific tour logistics and actual departure times.

SATURDAY, NOVEMBER 11

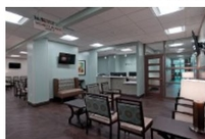
1:00 P.M. – 4:00 P.M.

T01 - Orlando VA Medical Center- Lake Nona Research Park



Situated on 65 acres, the Lake Nona Campus Orlando VA Medical Center was designed by RLF and Ellerbe Becket to ensure maximum flexibility for care provided in a healing environment. It incorporates 134 inpatient beds, 120 Community Living Center beds, and 60 domiciliary beds into 1.2 million-square-feet, and provides both inpatient and outpatient services.

T02 - Orlando Health Medical Pavilion at Spring Lake



Designed by KTH Architects Inc., the 60,000 square-foot Orlando Health Medical Pavilion at Spring Lake was built on a 26-acre site encompassing a senior housing community with independent living, assisted living, and memory care.

It boasts a full range of diagnostic imaging, laboratory services, Women's Imaging Center, a pharmacy, and café.

T03 - Nemours Children's Hospital



Nemours Children's Hospital is a state-of-the-art academic pediatric hospital that delivers holistic, family-centered care. Located on 60 acres, the 630,000 square-foot hospital was designed by Stanley Beaman & Sears and

Perkins+Will with a strong emphasis on nature, as seen through its rooftop gardens and surrounding greenery.

T04 - Hollis Cancer Center at Lakeland Regional Health



Designed by HuntonBrady Architects, the Lakeland Regional Health Hollis Cancer Center has undergone 9,684 square-feet of renovations and 21,460 square-feet of new construction, including a chemotherapy suite with

40 infusion stations, radiation oncology expansion, teaching auditorium, and more.

SATURDAY, NOVEMBER 11

4:30 P.M. – 8:30 P.M.

T05 - Florida Hospital Wesley Chapel



Florida Hospital Wesley Chapel has been transformed by HuntonBrady Architects with 122,000 square-feet of new additions and 11,000 square-feet of renovations, which include a 3-story vertical

addition for 24-bed units, a horizontal expansion of the central energy plant, and an expansion of emergency, observation, cath, prep/recovery, surgical, and patient unit services.

T06 - Florida Hospital Wauchula



Designed by HuntonBrady Architects as a 25-bed critical access hospital on a new campus location, the 2-story, 49,900 square-foot Florida Hospital Wauchula includes a 15-bed Emergency Department, along with admitting, imaging, pharmacy,

lab, nutritional services, inpatient services, rehabilitation, and administration.

T07 - Florida Hospital Lake Mary Freestanding ED



This stand-alone Lake Mary Emergency Room is a full-service emergency department coupled with imaging and lab capabilities. HuntonBrady Architects designed the emergency room to

accommodate 42,000 annual visits with 24 treatment rooms, CT, R/F and Ultrasound, and a laboratory.

T08 - Florida Hospital Apopka



Located in the Indoor Foliage Capital of the World, the design of Florida Hospital Apopka was inspired by greenhouses that spread across the landscape. ESa planned the building to include the use of evidence


based design and lean planning, focusing not just on the care of the sick but also the needs of a wellness-focused community hospital.

T09 - Florida Hospital for Women



This new women's hospital represents the culmination of a vision for holistic women's health care. In its 13 floors and eventual 336 licensed beds, women will be able to receive care through all stages of their lives and development. The hospital will house units for obstetrics, surgery, neonatal ICU, oncology, and

cardiology. HKS Architects, Inc is the design architect, and Stantec is the interior designer.

Sponsored by  MechoSystems
Design with light



1145 Sanctuary Parkway, Suite 355
Alpharetta, GA 30009

NOVEMBER 11-14, 2017
Gaylord Palms Resort & Convention Center
Orlando, FL

Register today at HCDEXPO.COM



November 11-14, 2017
Gaylord Palms Resort & Convention Center
Orlando, FL

A large teal banner with a faint city skyline background. The text 'WE'LL SEE YOU IN ORLANDO!' is written in large, white, sans-serif capital letters with a slight drop shadow.

**WE'LL SEE YOU IN
ORLANDO!**

For more information visit: HCDEXPO.COM

Presenting Sponsor: **Steelcase®**
HEALTH

EFA EXPO

November 11-14, 2017

Gaylord Palms Resort & Convention Center
Orlando, FL



E101 Evidence-based Ergonomics for Patient Rooms: Addressing Needs for Staff, Patients, Family, and Visitors



Room: Osceola Ballroom A Session Number:E101

Tuesday, November 14, 2017: 1:15 PM - 2:15 PM

Speaker(s)

Carolyn Sommerich Ph.D., C.P.E.

Associate Professor

Integrated Systems Engineering, The Ohio State University

Co-Presenter

Elizabeth Sanders Ph.D.

Associate Professor

Design, The Ohio State University

Co-Presenter

Steve Lavender Ph.D., C.P.E.

Associate Professor

Integrated Systems Engineering, The Ohio State University

Co-Presenter

Description

In a four-year National Institute for Occupational Safety and Health-sponsored research program, this team aimed to address the ergonomic needs of all occupational stakeholders working in medical/surgical patient rooms. This research process included focus groups and interviews with stakeholder groups, full-scale mock-up room design sessions, full-scale room layout review sessions with patients and visitors, and full-scale room layout review sessions with occupational stakeholders to identify potential conflicts that need to be considered in the design process. This presentation will focus on the principles and recommendations that should be considered by those engaged in the design of new or remodeled healthcare facilities.

Tracks:

Advancements in Evidence-Based Design Research

Learning Objectives

Understand and appreciate the ergonomic needs of hospital staff from many different occupations. Learn the value of Velcro-modeling as a participatory design method for early design stage ideation. Articulate advantages and disadvantages of different room layout designs from various stakeholder perspectives. Learn the evidence-based ergonomic design principles developed through this design research effort.

Educational Session

[Back to the Search](#)

For technical assistance with this webpage please [click here](#). For all other inquiries, please contact show management.

© 2016 Emerald Expositions, LLC. All rights reserved.

[Terms of Use](#) | [Privacy Policy](#)

[Home](#) | [About Us](#) | [FAQ](#) | [Sponsorship Opportunities](#) | [Contact Us](#) | [Site Map](#)



LOGOUT

EFA EXPO

Copyright 2018, a2z, Inc. All rights reserved.

