

Specific Chromosomal Aberrations in Mouse Lung Adenocarcinoma Cell Lines Detected by Spectral Karyotyping: A Comparison with Human Lung Adenocarcinoma

Linda M. Sargent,¹ Jamie R. Senft, David T. Lowry, Amy M. Jefferson, Frederick L. Tyson, Alvin M. Malkinson, Allen E. Coleman, and Steven H. Reynolds

National Institute for Occupational Safety and Health, Health Effects Laboratory Division, Toxicology and Molecular Biology Branch, Genetic Susceptibility Team, Morgantown, West Virginia 26505 [L. M. S., J. R. S., D. T. L., A. M. J., S. H. R.]; National Institute of Environmental Health Sciences, Division of Extramural Research and Training, Chemical Exposures and Molecular Biology Branch, Research Triangle Park, North Carolina 27709 [F. L. T.]; University of Colorado Health Sciences Center, Department of Pharmaceutical Sciences, Denver, Colorado 80262 [A. M. M.]; and National Cancer Institute, Laboratory of Genetics, Bethesda, Maryland 20892 [A. E. C.]

ABSTRACT

Although adenocarcinoma is rapidly becoming the most common form of lung cancer in the United States, the difficulty in obtaining lung cancer families and representative samples of the various stages of adenocarcinoma progression has led to intense study of mouse models. As a powerful approach to delineating molecular changes, we have analyzed 15 early-passage mouse cell lines by spectral karyotyping. Entire copies of chromosomes 1, 2, 6, 12, 15, and 19 were gained, and entire copies of chromosomes 4, 7, 8, and 14 were lost. Significant gains of portions of chromosome 1 (93% of the tumor cell lines analyzed), chromosome 2 (53%), chromosome 6 (73%), chromosome 7 (80%), chromosome 12 (47%), and chromosome 15 (73%) and partial loss of chromosome 4 (87%), chromosome 7 (80%), chromosome 8 (53%), chromosome 10 (33%), and chromosome 14 (33%) were observed. Recurrent translocations included 10:del(10)(A1::C1), t(4;8)(C4;A1), and der (1;12)(C2;C2). The minimal regions of chromosomal alteration, 1G1, 2F1, 4C4, 6D, 7F1, 8B3, and 12C2, contain putative susceptibility genes for mouse lung adenocarcinoma. Chromosomal regions containing susceptibility genes linked to tumor size were frequently amplified, whereas regions with susceptibility loci linked to tumor multiplicity were deleted. Similar linkage groups are altered in human lung adenocarcinoma, implying that the mouse is a valid genetic model for the study of human lung adenocarcinoma susceptibility.

INTRODUCTION

Lung cancer, the most common cause of cancer death in the world, is second only to bladder cancer in the number of cases linked to occupational exposure. Non-small cell lung cancer, accounting for ~75% of human lung cancers (1), has a high metastatic potential and is most frequently diagnosed at an advanced stage of disease. Adenocarcinoma is the most common form of non-small cell lung cancer diagnosed in smokers, nonsmoking women, and adults younger than 45 years of age (2). Familial clustering indicates that adenocarcinoma has a strong genetic component (3, 4). The poor prognosis coupled with the difficulty in obtaining useful lung cancer families makes genetic analysis of human adenocarcinoma very difficult. Murine adenocarcinoma has been proposed as a model for human adenocarcinoma (5). Crosses between susceptible and resistant mouse strains and subsequent quantitative trait locus mapping have demonstrated genetic loci that are correlated with tumor multiplicity or tumor progression. Manenti *et al.* (6) have reported the mapping of a lung cancer susceptibility locus, *Pas1*, in the mouse. The homologous human locus was shown to correlate with increased susceptibility for

adenocarcinoma of the lung in population-based studies (7). The high incidence and death rate associated with this cancer indicate the need to identify markers for early detection in individuals at high risk.

Genetic alterations in cancer commonly occur in chromosomal regions that regulate growth and development. Identifying these chromosomal regions is the first step in determining which genes are critical for the initiation and progression of cancer. Human lung adenocarcinoma is characterized by multiple complex chromosomal abnormalities. Lung tumor susceptibility has been studied extensively in the mouse, but karyotypic analysis of mouse lung adenocarcinoma has not been as well characterized. Among inbred strains of mice, the A/J mouse is one of the most susceptible to the development of spontaneous and chemically induced lung cancer (8–10). Quantitative trait locus mapping of mouse hybrids has identified regions of chromosomes that are correlated with susceptibility to lung cancer (11–15). In this study, we demonstrate that mouse lung tumor susceptibility loci are associated with deletions, translocations, and amplifications. Genetic linkage groups that are altered in lung adenocarcinomas from both mice and humans serve to highlight regions of the genome significant in the development of lung cancer and may aid in identifying human susceptibility genes.

MATERIALS AND METHODS

Tumor Cell Lines. Lung tumors of 0.6 cm or greater in diameter with a pathology of adenocarcinoma were excised from the lungs of 15 A/J mice. Ten of those tumors were spontaneous, and 5 were chemically induced. The tumor tissue was prepared and cultured as described previously (16). When the cells were 70% confluent, 1 mg/ml to 100 mg/ml Colcemid was added to block the cells in metaphase. Cell cultures that were resistant to Colcemid were given the higher dose of Colcemid. After a 10-h incubation, cells were harvested for inverted DAPI² chromosome banding, spectral karyotyping, and FISH analysis. Cells were incubated with 0.075 M KCl for 30–90 min and then fixed using 3:1 methanol:acetic acid (v/v) fixative.

Methods for Spectral Karyotyping. Spectral karyotyping and inverted DAPI banding were performed by standard methods (17). At least 20 metaphase cells of good banding morphology and spectral hybridization quality were analyzed for each tumor cell line. Chromosome abnormalities were included in the karyotype of a tumor if they occurred in at least 40% of the metaphase spreads. Translocations were confirmed with FISH using direct-labeled chromosome painting probes (Vysis, Inc., Downers Grove, IL).

Statistics. The percentages of tumor cell cultures with a specific aberration were determined. SD denotes the variation between tumor cell lines. Chromosome regions with an apparent likelihood of elevated breakage were tested for statistical significance using the χ^2 test. The *P*s were corrected for multiple comparisons using the Bonferroni correction.

² The abbreviations used are: DAPI, 4',6-diamidino-2-phenylindole; FISH, fluorescence *in situ* hybridization; Pas, pulmonary adenoma susceptibility; Sluc, susceptibility to lung cancer.

Received 9/10/01; accepted 12/10/01.

The costs of publication of this article were defrayed in part by the payment of page charges. This article must therefore be hereby marked *advertisement* in accordance with 18 U.S.C. Section 1734 solely to indicate this fact.

¹ To whom requests for reprints should be addressed, at Centers for Disease Control, National Institute for Occupational Safety and Health, 1095 Willowdale Road, MS-3014, Morgantown, WV 26505. Phone: (304) 285-6134; Fax: (304) 285-5708; E-mail: Lsargent@cdc.gov.

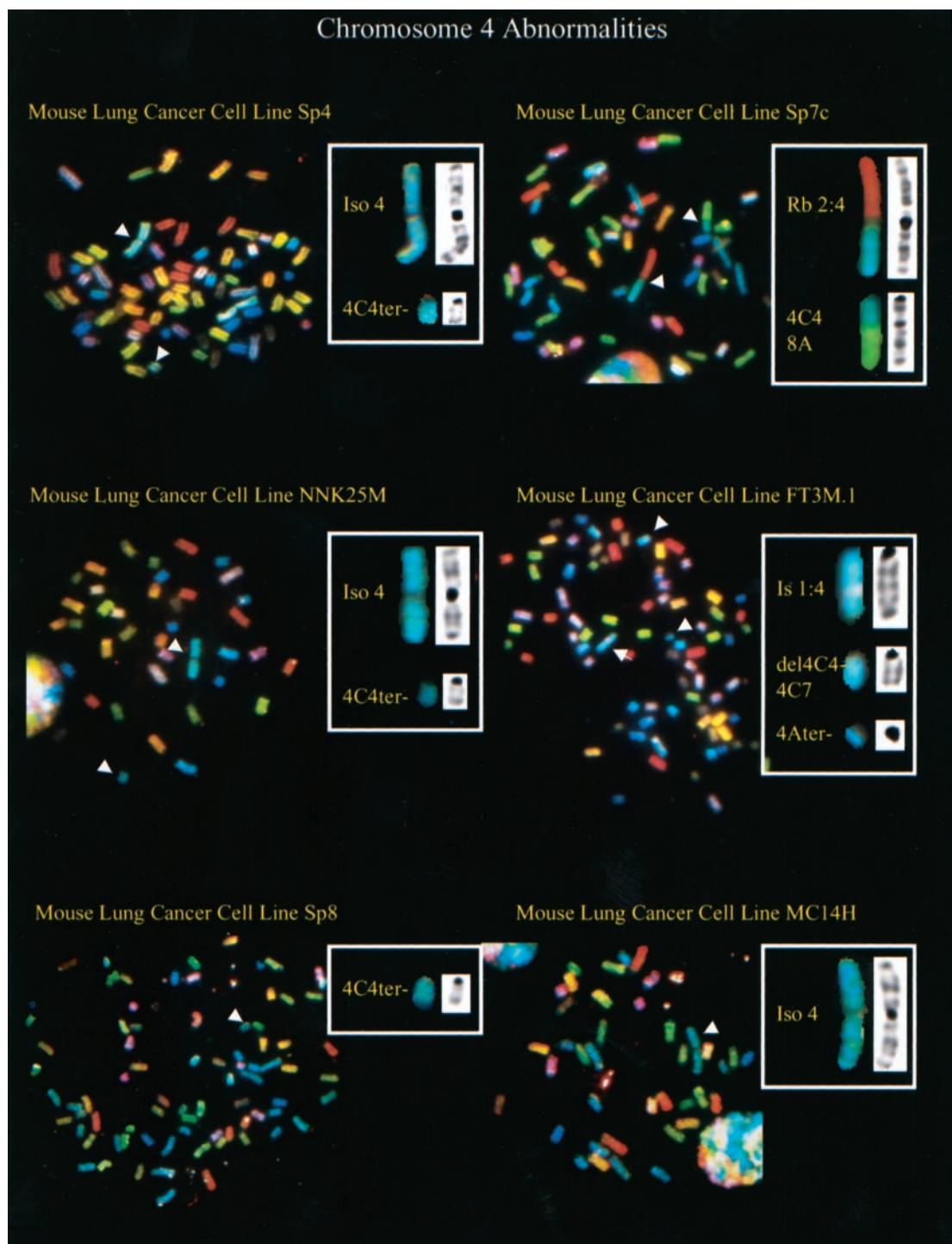


Fig. 2. This is a composite of the spectral images from cell lines with deletions of chromosome 4. The banded image is in the *white box* to the *right* of the spectral image. The breakpoint at 4C4 was the minimal region of deletion. Insertion of chromosome 1 into 4:1s(1;4)(G1;C4) was observed in FT3M.1.

observed in the homologous human linkage groups in human lung adenocarcinoma. The correlation between the chromosome alterations observed in mouse lung adenocarcinoma cell lines and where on these chromosomes that susceptibility loci for adenocarcinoma development map supports the importance of susceptibility loci in the development of lung cancer. Susceptibility loci associated with increased tumor size were amplified, whereas loci affecting tumor number were deleted in these mouse lung cell lines. This suggests selection for tumors with a rapid growth rate. The region of chromosome 1 that was frequently amplified in the cell lines contains a locus that confers lung

tumor susceptibility (12). Distal chromosome 1 also has genetic linkage groups that confer susceptibility to liver and intestinal tumors (19, 20). The tyrosine kinase *Abl 1* (21), *RXR γ* (22), a kinetochore protein (23), and a microtubule-associated protein (24) also map to this locus. *Scf1* is an important predictor of the size of the hematopoietic cell stem cell population and is located in the fragile region of mouse chromosome 1 (25). Amplification of the corresponding region of the human chromosome, 1q32–41, is a frequent change in human lung adenocarcinoma (18, 26). The minimal region of mouse chromosome 2 that is amplified is 2F1. The corresponding region of

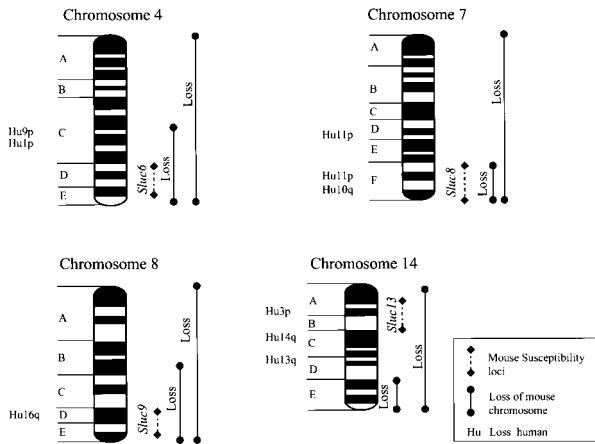


Fig. 3. Ideograms of chromosomes 4, 7, 8, and 14 demonstrate that the consistent losses observed in these mouse lung adenocarcinoma cell lines correlate with losses demonstrated previously in human lung adenocarcinoma. The mouse chromosome number is at the top of the ideogram. The homologous human chromosome is indicated to the left of the ideogram such as Hu with the chromosome number. The losses that were observed in the mouse lung cell lines are indicated by a solid bar to the right of the ideogram. The large bar indicates the most common region of deletion, and the small bar indicates the minimal region of deletion. Tumor susceptibility loci, *Sluc 6*, *Sluc 8*, *Sluc 9*, and *Sluc 13*, identified in mouse lung tumor models are indicated by a dashed line to the right.

human chromosome 20 is amplified in human lung adenocarcinoma (26, 27). This region of mouse chromosome 2 is not only increased in copy number but is also translocated to other chromosomes. The cell cycle regulatory gene, *E2f1*, is located within this amplified region. *E2f1* plays a critical role in the G₁ to S transition of the cell cycle and is therefore a reasonable candidate for amplification in rapidly dividing tumor cells. *E2f1* is amplified in human leukemia cells, which also demonstrate both amplification and translocation of this region (28). Amplification of *E2f1* cooperates with an activated *ras* oncogene that induces formation of morphologically transformed foci in primary rat embryo fibroblast cultures (29) and dermal epithelial cells (30). Many mouse and human lung adenocarcinomas have been observed to have mutations of the *K-ras* gene located on mouse chromosome 6. All of the cell lines that had a duplication of chromosome 2 also had a duplication of chromosome 6. We are currently examining the association between increased copy number of chromosome 6, mutation of *K-ras*, and the alteration of *E2f1*.

The duplicated region of chromosome 6 contains the two tumor susceptibility loci, *pulmonary adenoma susceptibility loci (Pas 1)*, and *susceptibility to lung cancer loci 3 (Sluc 3; Refs. 6, 13)*. The mutant form *K-ras* oncogene has been proposed as a candidate gene for *Pas 1* (31). The oncogenic action of mutant *K-ras* can result from a loss

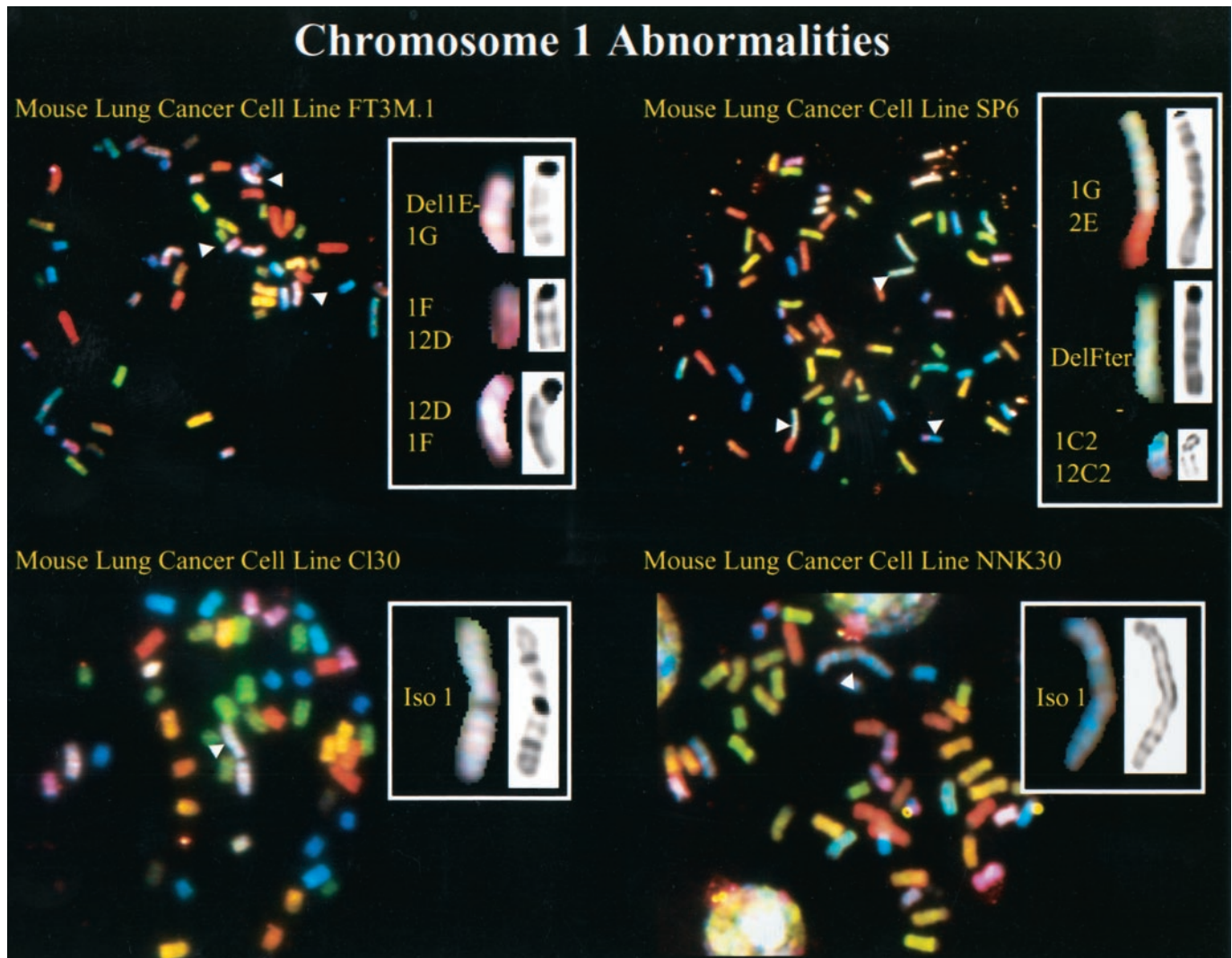


Fig. 4. A composite of the spectral images from cell lines that had duplications of chromosome 1. The banded image is in the white box to the right of the spectral image. The translocation between chromosomes 1 and 2 in cell line SP6: t(1;2)(G1;E3) is also involved 1G1. A duplication of chromosome 1 iso(1)(A1) was observed in cell lines CL30 and NNK30. Two translocations of 12 are in this figure. FT3M.1 had a balanced translocation, t(1;12)(C2;C2), and SP6 had an unbalanced translocation, der(1;12)(C2;C2).

of the wild-type allele or overexpression of the mutant allele (31). Polymorphisms of *K-ras 2* and *Pthl* loci were associated with an increased risk of human adenocarcinoma (7). The data demonstrating a putative lung cancer susceptibility gene in humans were the first demonstration of a potential link between the genetics of mouse lung tumor susceptibility and that of the human. In human lung adenocarcinoma, the homologous region of human chromosome 12p12 is amplified (18, 32).

A loss of chromosome 4 was detected in 87% of the tumor cell lines. The minimal region of deletion was band C4/C5 to the end of the chromosome. *Sluc 6* and the *pulmonary adenoma progression gene 1* (*pap1*) are located within this minimal region of deletion (Refs. 6, 13; Fig. 3). Wu *et al.* (33) reported a loss of mouse chromosome 4 in 9 of 10 lung tumor cell lines prepared from p53 transgenic mice. The homologous region of rat chromosome 5 is frequently deleted in rat lung adenocarcinoma (34). Many investigators have shown that the *Cdkn2a* and *Cdkn2b* genes are deleted in mouse and human lung tumors (35–37). *Cdkn2a* and *Cdkn2b* down-regulate cell growth and are located within the chromosome 4 deleted region. Increased deletion of the maternal chromosome in both mouse and human lung tumors would indicate a loss of imprinted genes not yet identified (38). Homologous regions of human 9p21 and 1p36 are deleted in lung adenocarcinoma as indicated in Fig. 3 (18, 26).

The region of mouse chromosome 7 deleted in the mouse lung tumor cell lines corresponds to human 11p15.5 and 11p13, and rearrangements have been reported in human lung adenocarcinoma (39, 40). Fijneman *et al.* (13) identified a tumor susceptibility locus on mouse chromosome 7 near the imprinted locus of insulin-like growth factor II, *H19*, and *p57*, as well the *H-ras* gene. The maternal copy of *H19* on human chromosome 11 is lost in lung adenocarcinoma (39). Microcell fusion with human chromosome 11 inhibits the growth of human lung adenocarcinoma cells (41).

The amplified site on mouse chromosome 12 contains *Sluc 12* and *Par 3* (13). The orthologous region on human chromosome 14q32 is frequently altered in human lung adenocarcinoma (18).

Deletion of chromosome 14 was common in the tumor cell lines. Chromosomal rearrangements of mouse chromosome 14 have been associated with the later stages of mouse neoplasia (42). The homologous chromosome is deleted in rat lung adenocarcinomas (34). The retinoblastoma gene, urokinase plasminogen activator (43–45), *Tg737* tumor suppressor gene (46), and retinoic acid receptor-related gene (22, 47) are candidates located in this deleted region. The corresponding region on human 13q is often deleted without mutation of the retinoblastoma gene in human lung neoplasia, chronic lymphocytic leukemia, mammary cancer, and liver cancer (48–50). Expression of other tumor suppressor genes is decreased in mouse and human lung tumors, including *APC*, *MCC*, and *p53* (51). Although there are many reports of mutations of *p53* in human lung adenocarcinoma (52) and few reports of similar mutations in mouse adenocarcinoma (53), *p53* expression is reduced in both mouse and human lung adenocarcinoma. Alterations of chromosomes 1, 4, 5, 6, 7, 8, 12, and 14 occurred at high frequency in mouse lung adenocarcinoma cell lines. The minimal regions of alteration of these chromosomes contain tumor susceptibility loci. The breakpoints on these chromosomes correspond to human 1q, 1p and 9p, 12p, 11p15.5 and 11p12–13, 8q, 14q32, and 13q, respectively, shown previously to be altered in human lung adenocarcinoma. Because the breakpoints on chromosomes 1, 2, 4, 5, 6, 7, 8, 12, and 14 correspond to lung tumor susceptibility genes in mouse and exhibit rearrangement and aneuploidy in mouse and human lung adenocarcinoma, these results indicate the importance of identifying tumor susceptibility genes in mice and then analyzing corresponding loci in humans.

REFERENCES

- Veness, M. J., Delaney, G., and Berry, M. Lung cancer in patients aged 50 years and younger: clinical characteristics, treatment details, and outcome. *Australas. Radiol.*, *43*: 328–333, 1999.
- Kreuzer, M., Kreienbrock, L., Muller, K. M., Gerken, M., and Wichmann, E. Histologic types of lung carcinoma and age at onset. *Cancer (Phila.)*, *85*: 1958–1965, 1999.
- Law, M. R. Genetic predisposition to lung cancer. *Br. J. Cancer*, *61*: 195–206, 1990.
- Yang, P., Schwartz, A. G., McAllister, A. E., Aston, C. E., and Swanson, G. M. Genetic analysis of families with nonsmoking lung cancer probands. *Genet. Epidemiol.*, *14*: 181–197, 1997.
- Malkinson, A. M. Primary lung tumors in mice: an experimentally manipulable model of human adenocarcinoma. *Cancer Res.*, *52*: 2670s–2676s, 1992.
- Manenti, G., Gariboldi, M., Fiorino, A., Zanasi, N., Pierotti, M. A., and Dragani, T. A. Genetic mapping of lung cancer modifier loci specifically affecting tumor initiation and progression. *Cancer Res.*, *57*: 4164–4166, 1997.
- Manenti, G., Nomoto, T., De Gregorio, L., Gariboldi, M., Stefania Falvella, F., Nagao, M., and Dragani, T. A. Predisposition to lung tumorigenesis. *Toxicol. Lett. (Amst.)*, *112–113*: 257–263, 2000.
- Foley, J. F., Anderson, M. W., Stoner, G. D., Gaul, B. W., Hardisty, J. F., and Maronpot, R. R. Proliferative lesions of the mouse lung: progression studies in strain A mice. *Exp. Lung Res.*, *17*: 157–168, 1991.
- Malkinson, A. M. The genetic basis of susceptibility to lung tumors in mice [published erratum appears in *Toxicology*, *55*: 349, 1989]. *Toxicology*, *54*: 241–271, 1989.
- Malkinson, A. M. Genetic studies on lung tumor susceptibility and histogenesis in mice. *Environ. Health Perspect.*, *93*: 149–159, 1991.
- Festing, M. F., Lin, L., Devereux, T. R., Gao, F., Yang, A., Anna, C. H., White, C. M., Malkinson, A. M., and You, M. At least four loci and gender are associated with susceptibility to the chemical induction of lung adenomas in A/J x BALB/c mice. *Genomics*, *53*: 129–136, 1998.
- Fijneman, R. J., de Vries, S. S., Jansen, R. C., and Demant, P. Complex interactions of new quantitative trait loci, *Sluc1*, *Sluc2*, *Sluc3*, and *Sluc4*, that influence the susceptibility to lung cancer in the mouse [see comments]. *Nat. Genet.*, *14*: 465–467, 1996.
- Fijneman, R. J., Jansen, R. C., van der Valk, M. A., and Demant, P. High frequency of interactions between lung cancer susceptibility genes in the mouse: mapping of *Sluc5* to *Sluc14*. *Cancer Res.*, *58*: 4794–4798, 1998.
- Pataer, A., Nishimura, M., Kamoto, T., Ichioka, K., Sato, M., and Hiai, H. Genetic resistance to urethan-induced pulmonary adenomas in SMXA recombinant inbred mouse strains. *Cancer Res.*, *57*: 2904–2908, 1997.
- Obata, M., Nishimori, H., Ogawa, K., and Lee, G. H. Identification of the *Par2* (pulmonary adenoma resistance) locus on mouse chromosome 18, a major genetic determinant for lung carcinogen resistance in BALB/cByJ mice. *Oncogene*, *13*: 1599–1604, 1996.
- Herzog, C. R., Soloff, E. V., McDoniels, A. L., Tyson, F. L., Malkinson, A. M., Haugen-Strano, A., Wiseman, R. W., Anderson, M. W., and You, M. Homozygous codeletion and differential decreased expression of p15^{INK4b}, p16^{INK4a}, and p16^{INK4a}- β in mouse lung tumor cells. *Oncogene*, *13*: 1885–1891, 1996.
- Coleman, A. E., Schrock, E., Weaver, Z., du Manoir, S., Yang, F., Ferguson-Smith, M. A., Ried, T., and Janz, S. Previously hidden chromosome aberrations in T(12;15)-positive BALB/c plasmacytomas uncovered by multicolor spectral karyotyping. *Cancer Res.*, *57*: 4585–4592, 1997.
- Petersen, I., Bujard, M., Petersen, S., Wolf, G., Goeze, A., Schwendel, A., Langreck, H., Gellert, K., Reichel, M., Just, K., du Manoir, S., Cremer, T., Dietel, M., and Ried, T. Patterns of chromosomal imbalances in adenocarcinoma and squamous cell carcinoma of the lung. *Cancer Res.*, *57*: 2331–2335, 1997.
- Drinkwater, N. R. Genetic control of hepatocarcinogenesis in C3H mice. *Drug Metab. Rev.*, *26*: 201–208, 1994.
- van Wezel, T., Stassen, A. P., Moen, C. J., Hart, A. A., van der Valk, M. A., and Demant, P. Gene interaction and single gene effects in colon tumour susceptibility in mice [see comments]. *Nat. Genet.*, *14*: 468–470, 1996.
- Seldin, M. F., and Kruh, G. D. Mapping of *Abll* within a conserved linkage group on distal mouse chromosome 1 syntenic with human chromosome 1 using an interspecific cross. *Genomics*, *4*: 221–223, 1989.
- Hoopes, C. W., Taketo, M., Ozato, K., Liu, Q., Howard, T. A., Linney, E., and Seldin, M. F. Mapping of the mouse *Rxr* loci encoding nuclear retinoid X receptors RXR α , RXR β , and RXR γ . *Genomics*, *14*: 611–617, 1992.
- Testa, J. R., Zhou, J. Y., Bell, D. W., and Yen, T. J. Chromosomal localization of the genes encoding the kinetochore proteins CENPE and CENPF to human chromosomes 4q24→q25 and 1q32→q41, respectively, by fluorescence *in situ* hybridization. *Genomics*, *23*: 691–693, 1994.
- Lafuse, W. P., Brown, D., and Zwilling, B. S. Assignment of the *microtubule-associated protein 2* gene to mouse chromosome 1. *Mamm. Genome*, *3*: 48–51, 1992.
- Muller-Sieburg, C. E., and Riblet, R. Genetic control of the frequency of hematopoietic stem cells in mice: mapping of a candidate locus to chromosome 1. *J. Exp. Med.*, *183*: 1141–1150, 1996.
- Lu, Y. J., Dong, X. Y., Shipley, J., Zhang, R. G., and Cheng, S. J. Chromosome 3 imbalances are the most frequent aberration found in non-small cell lung carcinoma. *Lung Cancer*, *23*: 61–66, 1999.
- Tanner, M. M., Tirkkonen, M., Kallioniemi, A., Collins, C., Stokke, T., Karhu, R., Kowbel, D., Shadravan, F., Hintz, M., Kuo, W. L., *et al.* Increased copy number at 20q13 in breast cancer: defining the critical region and exclusion of candidate genes. *Cancer Res.*, *54*: 4257–4260, 1994.

28. Saito, M., Helin, K., Valentine, M. B., Griffith, B. B., Willman, C. L., Harlow, E., and Look, A. T. Amplification of the *E2F1* transcription factor gene in the HEL erythroleukemia cell line. *Genomics*, *25*: 130–138, 1995.
29. Johnson, D. G., Cress, W. D., Jakoi, L., and Nevins, J. R. Oncogenic capacity of the *E2F1* gene. *Proc. Natl. Acad. Sci. USA*, *91*: 12823–12827, 1994.
30. Pierce, A. M., Fisher, S. M., Conti, C. J., and Johnson, D. G. Deregulated expression of E2F1 induces hyperplasia and cooperates with ras in skin tumor development. *Oncogene*, *16*: 1267–1276, 1998.
31. Zhang, Z., Wang, Y., Vikis, H. G., Johnson, L., Liu, G., Li, J., Anderson, M. W., Sills, R. C., Hong, H. L., Devereux, T. R., Jacks, T., Guan, K. L., and You, M. Wildtype *Kras2* can inhibit lung carcinogenesis in mice. *Nat. Genet.*, *29*: 25–33, 2001.
32. Suijkerbuijk, R. F., Sinke, R. J., Weghuis, D. E., Roque, L., Forus, A., Stellink, F., Siepman, A., van de Kaa, C., Soares, J., and Geurts van Kessel, A. Amplification of chromosome subregion 12p11.2–p12.1 in a metastasis of an i(12p)-negative seminoma: relationship to tumor progression? *Cancer Genet. Cytogenet.*, *78*: 145–152, 1994.
33. Wu, M. C., Sundaresan, M., Sundaresan, V., and Rabbitts, P. Genome wide search for genetic damage in p53 transgenic mouse lung tumours reveals consistent loss of chromosome 4. *Eur. J. Cancer*, *33*: 1677–1684, 1997.
34. Dano, L., Guilly, M. N., Muleris, M., Morlier, J. P., Altmeyer, S., Vielh, P., El-Naggar, A. K., Monchaux, G., Dutrillaux, B., and Chevillard, S. CGH analysis of radon-induced rat lung tumors indicates similarities with human lung cancers. *Genes Chromosomes Cancer*, *29*: 1–8, 2000.
35. Herzog, C. R., Wiseman, R. W., and You, M. Deletion mapping of a putative tumor suppressor gene on chromosome 4 in mouse lung tumors. *Cancer Res.*, *54*: 4007–4010, 1994.
36. Herzog, C. R., Chen, B., Wang, Y., Schut, H. A., and You, M. Loss of heterozygosity on chromosomes 1, 11, 12, and 14 in hybrid mouse lung adenocarcinomas. *Mol. Carcinog.*, *16*: 83–90, 1996.
37. Belinsky, S. A., Swafford, D. S., Middleton, S. K., Kennedy, C. H., and Tesfaigzi, J. Deletion and differential expression of p16^{INK4a} in mouse lung tumors. *Carcinogenesis (Lond.)*, *18*: 115–120, 1997.
38. Hegi, M. E., Devereux, T. R., Dietrich, W. F., Cochran, C. J., Lander, E. S., Foley, J. F., Maronpot, R. R., Anderson, M. W., and Wiseman, R. W. Allelotype analysis of mouse lung carcinomas reveals frequent allelic losses on chromosome 4 and an association between allelic imbalances on chromosome 6 and K-ras activation. *Cancer Res.*, *54*: 6257–6264, 1994.
39. Kondo, M., Matsuoka, S., Uchida, K., Osada, H., Nagatake, M., Takagi, K., Harper, J. W., Takahashi, T., and Elledge, S. J. Selective maternal-allele loss in human lung cancers of the maternally expressed *p57KIP2* gene at 11p15.5. *Oncogene*, *12*: 1365–1368, 1996.
40. Bepler, G., and Koehler, A. Multiple chromosomal aberrations and 11p allelotyping in lung cancer cell lines. *Cancer Genet. Cytogenet.*, *84*: 39–45, 1995.
41. O'Briant, K., Jolicoeur, E., Garst, J., Campa, M., Schreiber, G., and Bepler, G. Growth inhibition of a human lung adenocarcinoma cell line by genetic complementation with chromosome 11. *Anticancer Res.*, *17*: 3243–3251, 1997.
42. Pathak, S., Dave, B. J., and Gadhia, P. K. Re: "Mouse chromosome 14 is altered in different metastatic murine neoplasias" [see comment]. *Cancer Genet. Cytogenet.*, *83*: 172–173, 1995.
43. Ono, T., and Yoshida, M. C. Chromosomal assignment of *retinoblastoma 1* gene (*RBI*) to mouse 14D3 and rat 15q12 by fluorescence *in situ* hybridization. *Jpn. J. Genet.*, *68*: 617–621, 1993.
44. Rajput, B., Marshall, A., Killary, A. M., Lalley, P. A., Naylor, S. L., Belin, D., Rickles, R. J., and Strickland, S. Chromosomal assignments of genes for tissue plasminogen activator and urokinase in mouse. *Somatic Cell Mol. Genet.*, *13*: 581–586, 1987.
45. Borglum, A. D., Byskov, A., Ragno, P., Roldan, A. L., Tripputi, P., Cassani, G., Dano, K., Blasi, F., Bolund, L., and Kruse, T. A. Assignment of the urokinase-type plasminogen activator receptor gene (*PLAUR*) to chromosome 19q13.1–q13.2. *Am. J. Hum. Genet.*, *50*: 492–497, 1992.
46. Richards, W. G., Yoder, B. K., Isfort, R. J., Detilleux, P. G., Foster, C., Neilsen, N., Woychik, R. P., and Wilkinson, J. E. Oval cell proliferation associated with the murine insertional mutation TgN737Rpw. *Am. J. Pathol.*, *149*: 1919–1930, 1996.
47. Mattei, M. G., Riviere, M., Krust, A., Ingvarsson, S., Vennstrom, B., Islam, M. Q., Levan, G., Kautner, P., Zelent, A., Chambon, P., *et al.* Chromosomal assignment of *retinoic acid receptor (RAR)* genes in the human, mouse, and rat genomes. *Genomics*, *10*: 1061–1069, 1991.
48. Karhu, R., Knuutila, S., Kallioniemi, O. P., Siltanen, S., Aine, R., Vilpo, L., and Vilpo, J. Frequent loss of the 11q14–24 region in chronic lymphocytic leukemia: a study by comparative genomic hybridization. Tampere CLL Group. *Genes Chromosomes Cancer*, *19*: 286–290, 1997.
49. Sato, T., Tanigami, A., Yamakawa, K., Akiyama, F., Kasumi, F., Sakamoto, G., and Nakamura, Y. Allelotype of breast cancer: cumulative allele losses promote tumor progression in primary breast cancer. *Cancer Res.*, *50*: 7184–7189, 1990.
50. Tamura, K., Zhang, X., Murakami, Y., Hirohashi, S., Xu, H. J., Hu, S. X., Benedict, W. F., and Sekiya, T. Deletion of three distinct regions on chromosome 13q in human non-small-cell lung cancer. *Int. J. Cancer*, *74*: 45–49, 1997.
51. Malkinson, A. M. Molecular comparison of human and mouse pulmonary adenocarcinomas. *Exp. Lung Res.*, *24*: 541–555, 1998.
52. Ryberg, D., Hewer, A., Phillips, D. H., and Haugen, A. Different susceptibility to smoking-induced DNA damage among male and female lung cancer patients. *Cancer Res.*, *54*: 5801–5803, 1994.
53. Hegi, M. E., Soderkvist, P., Foley, J. F., Schoonhoven, R., Swenberg, J. A., Kari, F., Maronpot, R., Anderson, M. W., and Wiseman, R. W. Characterization of p53 mutations in methylene chloride-induced lung tumors from B6C3F1 mice. *Carcinogenesis (Lond.)*, *14*: 803–810, 1993.

Cancer Research

The Journal of Cancer Research (1916–1930) | The American Journal of Cancer (1931–1940)

Specific Chromosomal Aberrations in Mouse Lung Adenocarcinoma Cell Lines Detected by Spectral Karyotyping: A Comparison with Human Lung Adenocarcinoma

Linda M. Sargent, Jamie R. Senft, David T. Lowry, et al.

Cancer Res 2002;62:1152-1157.

Updated version Access the most recent version of this article at:
<http://cancerres.aacrjournals.org/content/62/4/1152>

Cited articles This article cites 52 articles, 13 of which you can access for free at:
<http://cancerres.aacrjournals.org/content/62/4/1152.full#ref-list-1>

Citing articles This article has been cited by 5 HighWire-hosted articles. Access the articles at:
<http://cancerres.aacrjournals.org/content/62/4/1152.full#related-urls>

E-mail alerts [Sign up to receive free email-alerts](#) related to this article or journal.

Reprints and Subscriptions To order reprints of this article or to subscribe to the journal, contact the AACR Publications Department at pubs@aacr.org.

Permissions To request permission to re-use all or part of this article, use this link
<http://cancerres.aacrjournals.org/content/62/4/1152>.
Click on "Request Permissions" which will take you to the Copyright Clearance Center's (CCC) Rightslink site.