

# Toxicologic Pathology

<http://tpx.sagepub.com/>

---

## **Nanotoxicology—A Pathologist's Perspective**

Ann F. Hubbs, Robert R. Mercer, Stanley A. Benkovic, Jack Harkema, Krishnan Sriram, Diane Schwegler-Berry, Madhusudan P. Goravanahally, Timothy R. Nurkiewicz, Vincent Castranova and Linda M. Sargent

*Toxicol Pathol* 2011 39: 301

DOI: 10.1177/0192623310390705

The online version of this article can be found at:

<http://tpx.sagepub.com/content/39/2/301>

---

Published by:



<http://www.sagepublications.com>

On behalf of:



[Society of Toxicologic Pathology](#)

**Additional services and information for *Toxicologic Pathology* can be found at:**

**Email Alerts:** <http://tpx.sagepub.com/cgi/alerts>

**Subscriptions:** <http://tpx.sagepub.com/subscriptions>

**Reprints:** <http://www.sagepub.com/journalsReprints.nav>

**Permissions:** <http://www.sagepub.com/journalsPermissions.nav>

# Invited Reviews

*Toxicologic Pathology*, 39: 301-324, 2011  
Copyright © 2011 by The Author(s)  
ISSN: 0192-6233 print / 1533-1601 online  
DOI: 10.1177/0192623310390705

## Nanotoxicology—A Pathologist's Perspective

ANN F. HUBBS<sup>1</sup>, ROBERT R. MERCER<sup>1</sup>, STANLEY A. BENKOVIC<sup>1</sup>, JACK HARKEMA<sup>2</sup>, KRISHNAN SRIRAM<sup>1</sup>,  
DIANE SCHWEGLER-BERRY<sup>1</sup>, MADHUSUDAN P. GORAVANAHALLY<sup>1</sup>, TIMOTHY R. NURKIEWICZ<sup>3</sup>, VINCENT CASTRANOVA<sup>1</sup>, AND  
LINDA M. SARGENT<sup>1</sup>

<sup>1</sup>*Health Effects Laboratory Division, National Institute for Occupational Safety and Health, Morgantown, West Virginia, USA*

<sup>2</sup>*Michigan State University, East Lansing, Michigan, USA*

<sup>3</sup>*Center for Cardiovascular and Respiratory Sciences, West Virginia University School of Medicine, Morgantown, West Virginia, USA*

### ABSTRACT

Advances in chemistry and engineering have created a new technology, nanotechnology, involving the tiniest known manufactured products. These products have a rapidly increasing market share and appear poised to revolutionize engineering, cosmetics, and medicine. Unfortunately, nanotoxicology, the study of nanoparticulate health effects, lags behind advances in nanotechnology. Over the past decade, existing literature on ultrafine particles and respirable durable fibers has been supplemented by studies of first-generation nanotechnology products. These studies suggest that nanosizing increases the toxicity of many particulates. First, as size decreases, surface area increases, thereby speeding up dissolution of soluble particulates and exposing more of the reactive surface of durable but reactive particulates. Second, nanosizing facilitates movement of particulates across cellular and intracellular barriers. Third, nanosizing allows particulates to interact with, and sometimes even hybridize with, subcellular structures, including in some cases microtubules and DNA. Finally, nanosizing of some particulates, increases pathologic and physiologic responses, including inflammation, fibrosis, allergic responses, genotoxicity, and carcinogenicity, and may alter cardiovascular and lymphatic function. Knowing how the size and physiochemical properties of nanoparticulates affect bioactivity is important in assuring that the exciting new products of nanotechnology are used safely. This review provides an introduction to the pathology and toxicology of nanoparticulates.

**Keywords:** nanotoxicology; nanopathology; nanotechnology; nano; particulates; pathology; toxicology.

### INTRODUCTION

The recent interest in nanotoxicology and nanoscale particulates (NPs) results from scientific advancements that have improved the capability to synthesize specific particulates in a size range from 1 to 100 nm. The toxicology of some NPs has been studied for a considerable time period as part of the study of ultrafine particles (Oberdörster, Oberdörster, and Oberdörster 2005). Ultrafine particles include NPs that are components of emissions from combustion and dust-generating industrial

processes. However, the newly engineered NPs that are products of nanotechnology have changed the abundance, chemical composition, and physical characteristics of very small particulates in potential workplace and environmental exposures.

Nanotechnology is the manipulation of matter on the atomic scale to create structures that can be developed into new products for use in engineering, science, and medicine. Nanotechnology has been revolutionized by improved techniques for synthesis, rapid advances in chemistry and physics at an atomic level, and improved understanding of intracellular structures at the molecular level (Iijima 1991; National Research Council 2006). Within the U.S. government, nanotechnology investments reached an estimated \$1.1 billion in 2006 (National Research Council 2006). The estimated market value of nanotechnology products for 2009 is \$254 billion, with anticipated growth to \$2.5 trillion by 2015 (Bradley, Nordan, and Tassinari 2009). Although some question precise predictions, rapidly increasing patent numbers support the increasing economic impact of nanotechnology (National Research Council 2006). The new engineered NPs include particulates that have never been studied and other particulates that have previously been studied only as components of mixtures. This review is an introduction to nanotoxicology and toxicologic pathology of the first-generation products of nanotechnology.

The findings and conclusions in this report are those of the authors and do not necessarily represent the views of the National Institute for Occupational Safety and Health. Timothy R. Nurkiewicz's contribution was supported by NIH RO1ES015022 and RC1 ES018274.

Address correspondence to: Ann F. Hubbs, DVM, PhD, DACVP, Health Effects Laboratory Division, National Institute for Occupational Safety and Health, Centers for Disease Control and Prevention, 1095 Willowdale Rd, Morgantown, WV 26505, USA; phone: 304-285-6128; e-mail: ahubbs@cdc.gov.

Abbreviations: BBB, blood-brain barrier; CNS, central nervous system; DNA, deoxyribonucleic acid; FESEM, field emission scanning electron microscope; MWCNT, multi-walled carbon nanotube; NP, nanoparticulate; OSHA, Occupational Safety and Health Administration; PEL, permissible exposure limit; PNOR, particulates not otherwise regulated; SEM, scanning electron microscope; SWCNT, single-walled carbon nanotube; TEM/FESEM, transmission electron microscope/field emission scanning electron microscope; TiO<sub>2</sub>, titanium dioxide.

An important consideration for toxicologic pathologists accustomed to working in the pharmaceutical industry is that regulation of many NPs is very different from regulation of pharmaceuticals. With the exception of some mineral fibers, most nonpharmaceutical particulates are regulated by their chemical composition, not by their size and shape. In workplaces, airborne particulates with a chemical composition not specifically noted in regulations are regulated by the Occupational Safety and Health Administration (OSHA) as particulates not otherwise regulated (PNOR). The OSHA permissible exposure limit (PEL) for an 8-hour time-weight average total PNOR concentration is 15 mg/m<sup>3</sup>. However, the fraction of those PNOR in the respirable range is less than for total PNOR, so that there is another PEL for PNOR with an aerodynamic diameter of 5 µm or less; that PEL is 5 mg/m<sup>3</sup> (Hubbs et al. 2005; OSHA 2006). Thus, the current regulations permit the commercial production and use of most NPs without additional safety testing, using standards developed for larger respirable particulates of the same chemical composition or as PNOR (Murashov et al. 2009). In many cases, toxicologic pathologists will evaluate the pathologic changes caused by NPs in current use in research laboratories or even NPs in widespread industrial use. Ongoing NP exposures in students and workers increase the urgency of the studies.

One concern is that surface area to mass ratio increases as the size of particulates decreases, and the toxicity of particulates often, but not always, correlates with surface area more than mass (Bonner 2007; Brown et al. 2001; Dankovic, Kuempel, and Wheeler 2007; Gonzalez, Smith, and Goodman 1996; Lison et al. 1997; Monteiller et al. 2007; Oberdörster, 1996; Oberdörster, Oberdörster, and Oberdörster 2005; Sager and Castranova 2009; Sager, Kommineni, and Castranova 2008; Tran et al. 2000). As will be described later, some NPs can cross epithelial barriers in the skin and lung, can penetrate flexed skin, can cause lymphangiectasia, may be transported in sensory nerves, and can interact with mitotic spindles (Hubbs et al. 2009, 2008; Oberdörster, Oberdörster, and Oberdörster 2005; D. Porter et al. 2010, 2009; Sargent et al. 2009; Tinkle et al. 2003). Pathologists played a critical role in identifying these changes, but identifying changes caused by NPs requires a thorough and often high-magnification evaluation. The old saying “high power, low brain” is inappropriate when evaluating morphologic alterations caused by particulates with dimensions < 100 nm.

The terminology is relatively easy to understand but not well standardized. The prefix *nano* means one billionth or 10<sup>-9</sup> or very small, but within nanotechnology and nanoscience, it generally refers to dimensions of 100 nm or less (SCENIHR 2007). The resulting terms are combinations of this prefix and a common word. The prefix does not change the meaning of the word to which it is attached. Thus, nanoscale refers to the size range of 1 to 100 nm, nano-objects have at least one dimension in the nanoscale range, and nanotechnology is the technology of products with nanoscale dimensions (ISO 2008; SCENIHR 2007). However, some terms are defined differently by different groups. For example, nanoparticles are variably defined as particles having one or more, two or more, or all

dimension < 100 nm; while “being engineered” is required in some, but not all definitions (ISO 2008; Maynard and Kuempel 2005; Nielsen et al. 2008; SCENIHR 2007). Therefore, engineered spherical nanoscale particulates are almost always included in the definition of nanoparticles, but nanotubes and industrial ultrafine particles may or may not be included depending on the definition used (Oberdörster, Oberdörster, and Oberdörster 2005; Oberdörster, Stone, and Donaldson 2007; SCENIHR 2007). To produce reproducible findings, nanotoxicology studies need to use clear definitions and investigate the toxicity of unambiguously characterized nanotechnology products (Sayes and Warheit 2009). In this review, we will use the term *nanoscale particulates* (NPs) for particulate matter with at least one dimension < 100 nm. This terminology is compatible both with the OSHA regulations for particulates and with existing standardized nomenclature for nanotechnology products (ISO 2008; OSHA 2006; SCENIHR 2007).

#### HISTORY AND PROPERTIES OF NANOSCALE PARTICULATES

The element carbon is the major component of biological organisms and many familiar items such as coal, graphite, carbon black, and diamonds. Surprisingly, a new structural arrangement of carbon was identified in 1985, where the carbon was organized into pentagons and hexagons to form a hollow sphere comprised of 60 carbon atoms (C<sub>60</sub>), a structure originally known as buckminsterfullerene (Kroto et al. 1985).

Less than a decade after the discovery of C<sub>60</sub>, carbon sheets arranged into nanoscale tubes were synthesized (Ebbesen and Ajayan 1992; Iijima 1991). These hollow tubes, known as nanotubes, were formed from one or more walls comprised solely of carbon arranged into multiple hexagons (Bethune et al. 1993; Ebbesen and Ajayan 1992; Iijima 1991; Iijima and Ichihashi 1993). Multi-walled carbon nanotubes (MWCNTs; Figure 1A) have multiple walls, while single-walled carbon nanotubes (SWCNTs; Figure 1B) have one wall (Ajayan, Charlier, and Rinzler 1999). Additional members of this new family of carbon structures, known as fullerenes, were subsequently discovered. A common feature of the fullerenes was pi-bonding of carbon atoms causing a planar organization into carbon balls, capsules, and tubes (Adams et al. 1992). Each carbon atom was attached to three other carbon atoms using a combination of single and double bonds, but a difference between fullerenes and most organic compounds was the absence of hydrogen or other chemical groups (Nielsen et al. 2008; Taylor and Walton 1993). A variety of methods for synthesizing carbon nanotubes have been developed, and the different techniques, such as the use of metal catalysts, can affect the composition of the final product, including the presence or absence of metals in the nanotubes (Bonner 2010).

Carbon nanotubes have many potential applications because of their controlled composition, electrical conductivity, and great tensile strength (Ajayan, Charlier, and Rinzler 1999; Yu et al. 2000). It is the ability to control the shape and composition of nano-objects first revealed by carbon nanotubes that makes nanoscale engineering possible. Of particular

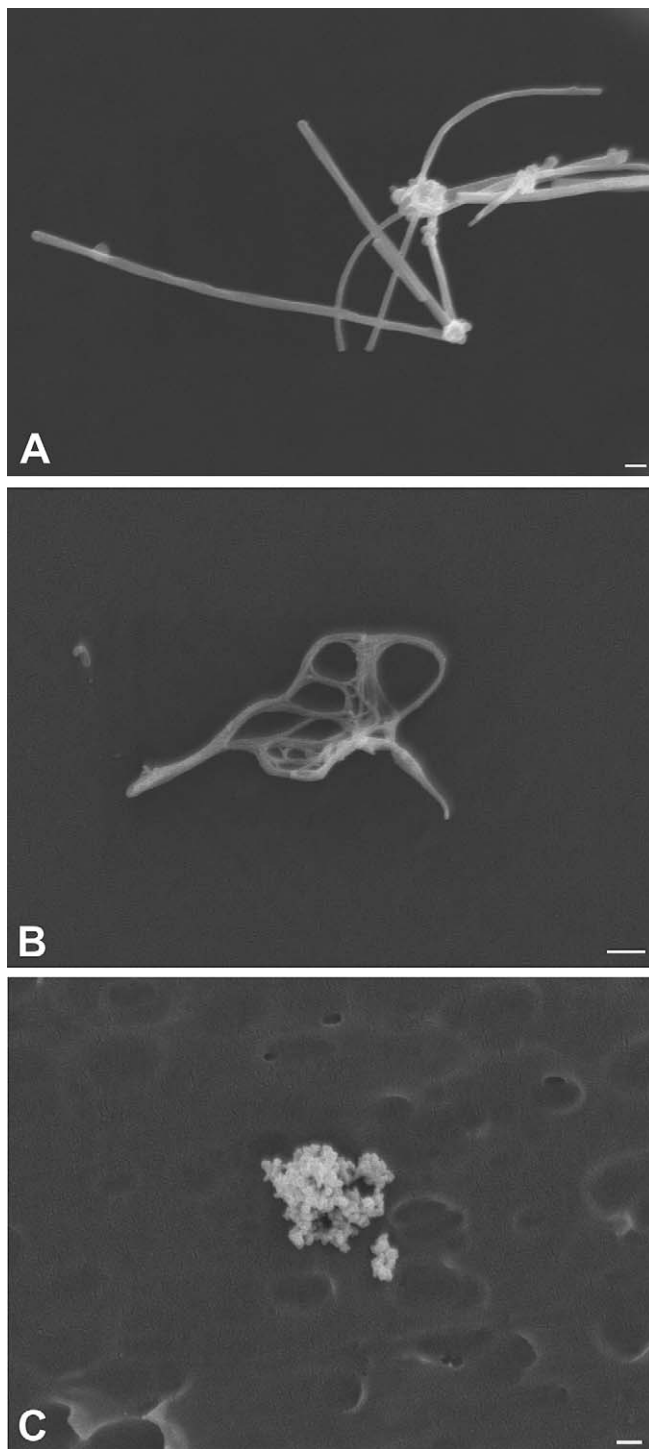


FIGURE 1.—Nanoparticulates as seen by scanning electron microscopy. (A) Multi-walled carbon nanotubes. (B) Single-walled carbon nanotubes. (C) Nanoscale titanium dioxide is also known as ultrafine titanium dioxide and here illustrates that nanoparticulates often agglomerate to form larger particles, making issues of measuring particle number, size, and surface area particularly difficult. Bar = 200 nm.

importance, carbon nanotubes revolutionized the interest in controlled synthesis of nanoparticulates, which rapidly evolved to include elements other than carbon. Controlled

manufacturing of nanoscale products usually involves the engineered growth of particulates (Sayes and Warheit 2009). The chemical composition is determined by the intended use of the nanotechnology product. For example, these products may now be comprised of fullerene carbon, minerals, metals, light emitting structures known as quantum dots, or anything else that can be engineered in nanoscale dimensions (Aitken et al. 2006; Curl and Smalley 1988; Iijima 1991; Kroto 1988). Today, a variety of different elements can be arranged into specific and highly controlled shapes with nanoscale dimensions. Examples include nanotubes and sheets made of boron (J. Wang, Liu, and Li 2009), zinc oxide nanowires (F. Wang et al. 2010), ultrathin zinc oxide nanorods (Cao, Wang, and Wang 2010), gold nanotubes and nanorods (Niidome et al. 2003; Wirtz, Yu, and Martin 2002), and an ever-increasing number of more complex structures and mixtures (Devika et al. 2010; Diaz and Cagin 2010; W. Kim, Choi, et al. 2009; Koppinen et al. 2010; Paulose, Varghese, and Grimes 2003).

A general concern for the NPs is that decreasing particulate size increases the surface area per unit volume or mass. For reactive particles, this increases the surface area for reaction; and for soluble particles, this leads to more rapid dissolution (Watari et al. 2009).

Of particular importance to toxicologic pathologists is an expanding group of nanotechnology products with medical applications, including nanoparticulates for medical imaging and targeted drug delivery (Cirstoiu-Hapca et al. 2009, 2010; Cormode et al. 2009; Kateb et al. forthcoming; Lee et al. 2010; Partha and Conyers 2009; Tian et al. 2010). Understanding how smaller dimensions can alter biologic responses should improve safety assessment for these new products. However, the small size of NPs also means that subcellular interactions can be critical. In short, for pathologists who have discarded their slide holder, they may want to buy a new one.

Unfortunately, studies of NP toxicology lag well behind the development of new engineered NPs. However, several reviews of the toxicology of NPs underscore the importance, as well as the unique difficulties, of nanotoxicology studies (Bonner 2010; Boverhof and David 2010; De Jong and Borm 2008; Doak et al. 2009; Duffin, Mills, and Donaldson 2007; Fischer and Chan 2007; Hoet et al. 2009; Landsiedel et al. 2009; Linkov, Satterstrom, and Corey 2008; Oberdörster, Oberdörster, and Oberdörster 2005; Oberdörster, Stone, and Donaldson 2007; Tsuji et al. 2006). Nevertheless, a recent PubMed search using the search term “nanotechnology” recovered in excess of 20,000 scientific publications in the past 10 years. A PubMed search using the term “nanomedicine” recovered 1,417 references, and there is indeed now a journal with that name. Yet a PubMed search using the term “nanotoxicology” recovered only 77 references, while a search of the terms “nano” and “toxicology” recovered 82 references. Surprisingly, a PubMed search using the term “nanopathology” recovered only 1 reference (Gatti et al. 2009), while a search of the terms “nano” and “pathology” recovered 430 references. No reviews of the toxicologic pathology of nanoparticulates were found. With a whole spectrum of new nanotechnology products and an increasing



interest in nanomedicine, this seems to be a very good time for toxicologists, pathologists, and toxicologic pathologists to join the nanotechnology revolution.

### EXPOSURES

Few studies have looked at NP exposures. As has recently been noted, the number of newly emerging engineered NPs seems almost countless (Bonner 2010). Another result of the explosion in nanotechnology research is that it translates into the development and use of diverse new NPs in research laboratories at universities (D. Johnson et al. 2010; Tsai et al. 2009). There, students are presumably exposed during graduate and potentially undergraduate education. Such exposures are largely unregulated, and no research papers were identified that investigated or discussed exposures in this population.

The principal routes of occupational and environmental NP exposures are through the skin, gastrointestinal tract, and respiratory tract (Aitken et al. 2006; Cormode et al. 2009; Han et al. 2008; Y. Kim et al. 2008; Maynard and Kuempel 2005; Tinkle et al. 2003). Many current NP exposures are skin exposures to consumer products. Conversely, many NPs intended for medical imaging and/or therapeutics are still in an investigational stage, with intravascular and other forms of parenteral exposure being major exposure routes (Cormode et al. 2009; Y. Kim et al. 2008; Murashov 2009). Importantly, nanomedical products can expose workers as well as patients, so these are not entirely distinct kinds of exposures (Murashov 2009).

Unfortunately, currently available techniques for measuring airborne particulates were not developed to measure workplace exposures to particulates with nanoscale dimensions (Maynard and Kuempel 2005). As has recently been reviewed, to measure aerosol concentrations of NPs, it may be necessary to measure the number of particles, their surface area, and/or mass particle concentration (Maynard and Aitken 2007). As noted by the National Institute for Occupational Safety and Health (NIOSH; 2009), current data suggest that surface area, particle size, shape, and surface chemistry of NPs may be more important measures of exposure than particle mass. An additional issue is whether particle number represents the number of agglomerates or the number of NPs that make up that agglomerate (Figure 1C). Current instrumentation can make some of these exposure measurements, but practical instruments for routinely measuring personal exposures in the breathing zones of workers are not yet available (Maynard and Aitken 2007; Methner, Hodson, and Geraci 2010; Murashov et al. 2009). Specific occupational exposure limits do not yet exist for most NPs (Maynard and Aitken 2007; Murashov et al. 2009; NIOSH 2009).

Within research laboratories, NPs can be released into the air in very high concentrations. Thus, in one study the task of weighing and transferring raw multi-walled carbon nanotubes (MWCNTs) of approximately 1  $\mu\text{m}$  diameter caused an airborne particle release of 4,514 particles/L; while the task of weighing and transferring MWCNTs of approximately

300 nm diameter released in excess of 123,403 particles/L air (D. Johnson et al. 2010). Sonicating raw MWCNTs in water containing natural organic matter generated an aerosol containing 42,796 particles/L (D. Johnson et al. 2010). Under simulated production conditions, limited data indicate that aerosols of single-walled carbon nanotubes (SWCNTs) may be generated, but concentrations are generally low on a mass basis ( $<53 \mu\text{g}/\text{m}^3$ ) (Maynard et al. 2004). However, higher exposures may occur during specific manufacturing processes in the absence of appropriate engineering controls (Methner, Hodson, Dames, et al. 2010). Carbon nanotubes can also be produced from high temperature burning of hydrocarbon fuels (Bang et al. 2004; Lam et al. 2006; Murr 2008). While the generation of MWCNTs from burning of hydrocarbons has received the most study, it was the thinner SWCNTs that were detected in four of the seven samples of dust from the World Trade Center site and in lung tissues from three of four World Trade Center responders with extensive interstitial/parenchymal lung disease (M. Wu et al. 2010). The SWCNTs from the World Trade Center site are believed to be the products of carbon and metal combustion (M. Wu et al. 2010). Since identification of SWCNTs in World Trade Center dust is very recent, the frequency of SWCNT exposures during and following structural fires remains unknown.

Dermal exposures to carbon nanotubes are important in workers. As much as 6 mg of SWCNTs may contaminate each glove of workers at a SWCNT production facility (Maynard et al. 2004). Contamination of gloves raises the possibility of transfer to unprotected skin and also potential migration of skin-deposited NPs into flexed or damaged skin of workers (Tinkle et al. 2003).

Dermal exposure to NPs also occurs with consumer products. Current NP exposures in consumer products include inorganic NPs. Consumers are exposed to  $\text{TiO}_2$  and ZnO NPs in sunscreens (Nohynek et al. 2010). In addition, wound dressings have been reported to contain nanocrystalline silver as an antimicrobial agent (Bhattacharyya and Bradley 2006, 2008). Particles less than 1  $\mu\text{m}$  in diameter can penetrate flexed skin in motion, reaching at least the epidermis and potentially the dermis (Tinkle et al. 2003). After dermabrasion, polyethylene glycol coated cadmium selenide quantum dot NPs can penetrate the skin, with 2% of the cutaneously applied cadmium actually reaching the liver (Gopee et al. 2009). However, in a recent study in minipigs, application of  $\text{TiO}_2$  NPs in sunscreens to intact skin did not increase  $\text{TiO}_2$  concentrations in the lymph nodes or liver, suggesting that they are not systemically absorbed (Sadrieh et al. 2010). However,  $\text{TiO}_2$  NPs reach distant organs after topical application in hairless mice (J. Wu et al. 2009). Skin penetration of NPs may be influenced by other components in topical formulations. Oily formulations appear to enhance skin penetration of  $\text{TiO}_2$  NPs, while aqueous formulations decrease skin penetration (Bennat and Muller-Goymann 2000).

Thus, NPs are currently in topical formulations of cosmetics and wound dressings. In intact skin, NPs appear to reach the epidermis but in most studies do not go further. However,

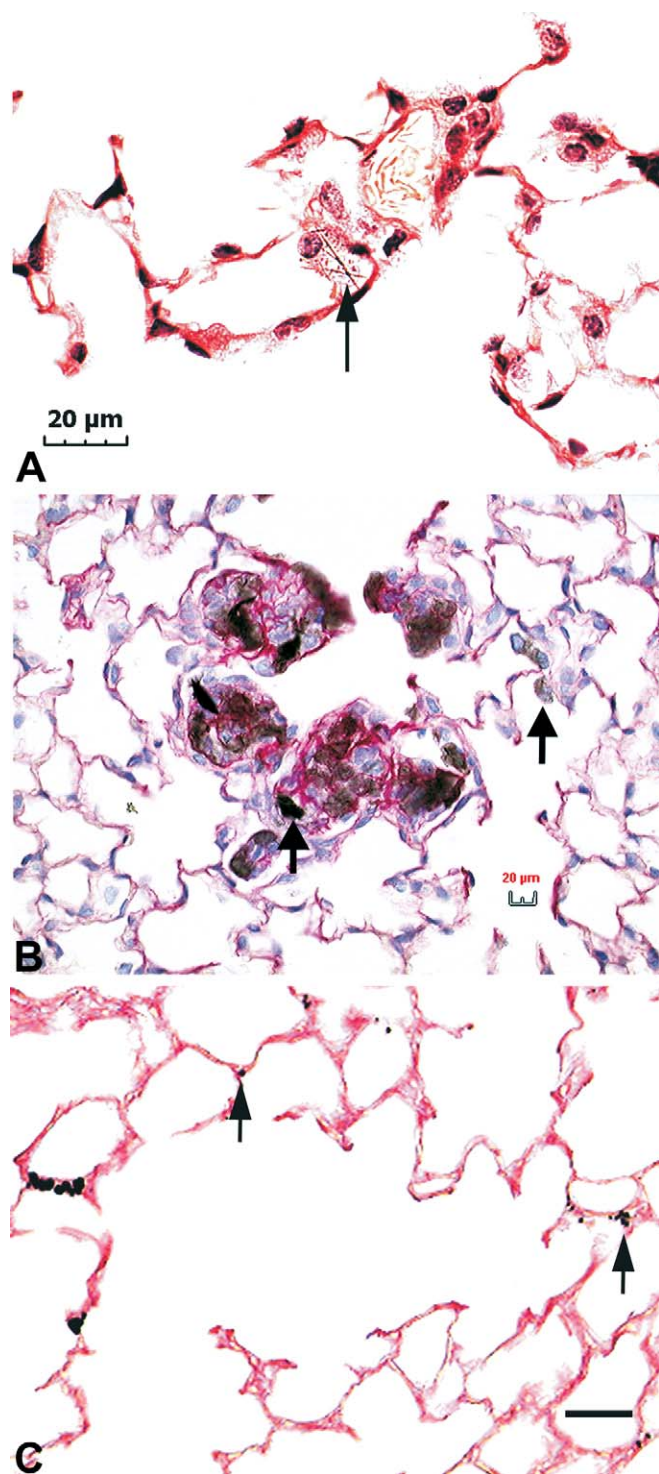


FIGURE 2.—Light micrographs of particulates in tissue sections. (A) Light microscopic image of asbestos fibers (arrow) penetrating an alveolar macrophage. Individual fibers, such as asbestos, are easily seen in sections, as single fibers effectively block light over a significant fraction of the field of view. In addition, the fibers are “in-focus” throughout the section even when imaged with higher power objectives that have limited depth of field. (B) Sirius Red—Hematoxylin stained section from mouse lung 1 month after aspiration dose of 2 mg/kg SWCNTs. The Sirius Red stain highlights the extensive collagen fibers, which are

within the epidermis of the intact skin, NPs could potentially interact with antigen presenting cells (Nestle et al. 2009). In addition, NPs appear to be capable of traversing through damaged or wounded skin. Finally, from an occupational standpoint, these skin products are in current production, but data on exposures to workers are not yet available. An overarching issue is that modern technology is influencing the nature and extent of NP exposures for workers, consumers, and patients.

#### DEMONSTRATING NPs IN TISSUE

##### *Factors That Limit the Ability to Identify NPs in Tissue Sections*

Given the high number of NPs present in even a microgram of NP material, visualization of NPs might appear to be a routine microscopic exercise. For instance, a 50 μg lung burden of well-dispersed MWCNTs in the mouse lung could easily distribute into 10 billion or more nanotubes throughout the lungs. Given that the mouse lung has on the order of 4 million alveoli (Mercer, Russell, and Crapo 1994), this would, on average, yield approximately 10,000 or more nanotubes per alveolus.

Numerous factors work in concert to significantly reduce the visibility of this apparently vast number of particles. These include the following:

1. *Lack of adequate dispersion.* Although NPs are characterized by the dimensions of single particles, NPs are rarely monodispersed. Failure to adequately disperse NPs is one of the major problems in preparation, administration, and detection of NPs. Many of the NPs that are of interest for health risk evaluations have a high self-affinity and require treatment with special dispersants to prevent agglomeration into micrometer dimensions (Mercer et al. 2008; D. Porter et al. 2010; Sager et al. 2007). In the absence of such treatment, as much as 80% of SWCNTs may remain agglomerated into micrometer-sized clumps (Mercer et al. 2008).
2. *Limitations in visualization due to narrow depth of field.* Because of their small dimensions, examination of well-dispersed NPs requires high objective powers, which typically also have a limited depth of field. Because of the limitations of the depth of field at high numerical aperture, only a fraction of the particles in the section will be in focus at one time. For example, a 100x high numerical aperture lens may have a depth of field of only 0.2 μm. Thus,

FIGURE 2 (Continued). interspersed within the large, gray to black, masses of SWCNTs. The SWCNTs “visible” in this image vary from a light gray (right arrow, few fibers in the light path) to nearly black (left arrow, large, dense grouping of fibers in the light path). (C) Silver-enhanced demonstration of colloidal gold-labeled SWCNTs in the mouse lung. This micrograph illustrates the utility of using a labeled nanomaterial to demonstrate the distribution of material that would not otherwise be visible in sections (arrows).

only 1/25 of the thickness of a 5  $\mu\text{m}$  section would be in optimal focus at one time. For larger fibers such as asbestos fibers this does not pose a significant problem, as the out-of-focus regions of the large fibers are still detectable (Figure 2A). Nanometer diameter regions of a multiple micrometer length nanotube with components outside of the depth of field would not be visible. To detect such fibers, the observer needs to frequently rock the focus back and forth to visualize NPs which may be out of the current focal plane.

3. *Lack of contrast between the biologic tissue and the nanomaterial.* Many NPs, such as carbon nanotubes, were developed as structural materials and as such are relatively unreactive to conventional biologic stains. Furthermore, the dimensions of the NPs are frequently less than the visible wavelengths of light which further diminishes the likelihood of detection. Figure 2B shows this effect in a lung section from a mouse exposed to SWCNTs. Carbon nanotubes, like many NPs, are unreactive to conventional stains and only give the appearance of being differentiated in the sections because there is sufficient mass of nanomaterial in the light path to block light. The right arrow indicates a light gray mass of SWCNTs corresponding to a relatively low mass of SWCNTs in the path. The left arrow indicates a nearly black area corresponding to a dense mass of SWCNTs. In a previous study comparing detection of unlabeled SWCNTs with labeled SWCNTs, we estimated that SWCNT masses on the order of 1  $\mu\text{m}$  or less were not visible without the aid of a detectable label in conventional microscopic sections (Mercer et al. 2008).
4. *The small fraction of the section's area covered by the NPs.* To be detectable in a microscope section, the nanomaterial must cover a sufficient area of the section to alter the light path. In a 1/2  $\text{cm}^2$  tissue section of a mouse lung exposed to 50  $\mu\text{g}$  of MWCNTs, there may be as many as 2 million MWCNTs, each being 50 nm in diameter by approximately 5  $\mu\text{m}$  long. Even if these fibers were maximally aligned end to end into a sheet parallel to the section, the fibers would cover less than 1% of the 1/2  $\text{cm}^2$  tissue section. This combined with the lack of contrast make individual and small clumps of carbon nanotubes difficult to detect in microscopic sections.

Depending on the specific characteristics, these factors can limit the ability to detect and identify NPs in conventional histology slides and require specialized techniques.

#### Labeled NPs

Labeling of NPs with a fluorescent indicator or some conveniently detected particle such as colloidal gold is one possible solution to make NPs easily visible in sections. Functionalization of the carbon-carbon bonds in carbon nanotubes

has been done to enhance the carbon nanotubes for commercial use (Sinnott 2002). Functionalization such as the oxidation of the carbon-carbon bonds may be used to label the carbon nanotubes with colloidal gold. Labeling with colloidal gold allows the application of a variety of established techniques which have already been developed for immunohistochemistry and other fields.

These techniques can be used to allow detection in microscopic sections by silver enhancement and to aid in identification in TEM/FESEM (transmission electron microscope/field emission scanning electron microscope) observation (Mercer et al. 2008). Figure 2C shows an example from that study in which silver enhancement of the gold labeled SWCNTs was used to detect a highly dispersed preparation of SWCNTs that would not otherwise have been visible. This section is from the lungs of a mouse given a 10  $\mu\text{g}$  preparation of highly dispersed and size limited SWCNTs, which were 1.1  $\mu\text{m}$  or less. In conventional sections, these highly dispersed SWCNTs are rarely if at all detectable, but by using the silver enhancement to enlarge the gold label on the SWCNTs, the widespread distribution could be detected.

#### High-Resolution FESEM

Conventional scanning electron microscopes (SEM) that are used for biologic specimens have been applied with great success to imaging of many of the micrometer-dimensioned inhaled particles that were studied prior to the advent of nanomaterials. Figure 3A shows a backscatter electron SEM image from a section of a lung exposed to silica particles that has been placed on a carbon planchet. The high-level backscatter emissions from the silica particles are easily identified in the alveolar macrophages of the section.

For NPs, the conventional SEM does not have the sub-micrometer resolution necessary to resolve or identify NPs. Difficulties in imaging NPs with an SEM are further complicated by the fact that many NPs, such as carbon nanotubes, have no significant difference in secondary electron or backscatter emissions from the organic carbon in which they are immersed.

Introduction of the field emission scanning electron microscope (FESEM) has significantly improved the resolution and applicability of the SEM to examination of NPs in tissue. The unique "cold" cathode design of the FESEM produces high-quality, low-voltage images with negligible electrical charging that can be used to identify NPs in tissues at levels of resolution not previously available with the conventional SEM. The high-resolution capability of the FESEM greatly facilitates the imaging of MWCNT interactions with cells and tissues of the lung. The FESEM image in Figure 3B shows the penetrating nature of MWCNTs in an alveolar macrophage 28 days after exposure.

#### HISTOPATHOLOGIC CHANGES IN NP-EXPOSED TISSUES

The explosion in nanotechnology research means that the histopathologic changes following exposure to most nanotechnology products are uninvestigated. The first indications of the



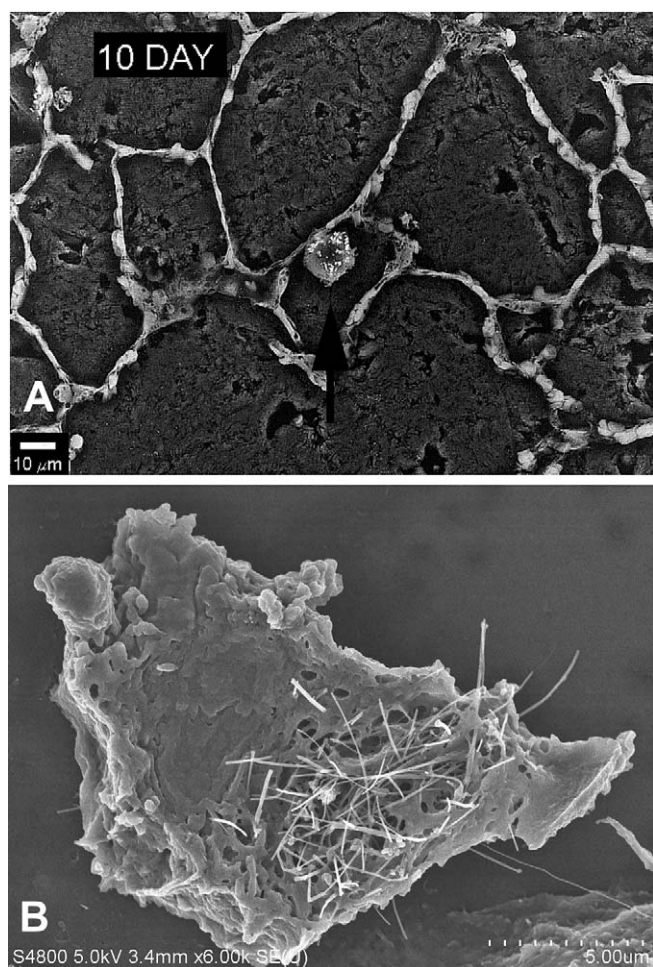


FIGURE 3.—Scanning electron micrographs of particulates in tissue section. (A) Backscatter SEM image of lung section 10 days after silica inhalation. An alveolar macrophage loaded with fine-sized silica particles is identified by the arrow. Imaging of traditional particles such as silica and asbestos can be accomplished at low resolution due to the large particle size and the heightened electron emissions associated with the elemental composition of the particles. (B) FESEM of alveolar macrophage loaded with MWCNTs. Image shows the typical appearance of mouse lung 28 days after exposure to an 80 µg dose of MWCNTs. Bar = 30 µm.

potential risks from the nanoscale forms of compounds with known toxicity profiles came from studies of ultrafine particulates and from studies of carbon nanotubes (Bonner 2010; Donaldson et al. 2006; Oberdörster 2010; Oberdörster et al. 2005; Oberdörster, Oberdörster, and Oberdörster 2005; Oberdörster, Stone, and Donaldson 2007).

The prototypical engineered NPs, SWCNTs, cause pulmonary inflammation (Shvedova et al. 2008, 2005; Warheit et al. 2004). However, the significance of the SWCNT-induced inflammation has been questioned by some scientists. In the first study of intratracheally instilled SWCNTs in rats, discrete granulomas that were not dose-responsive and an absence of signs of inflammation in bronchoalveolar lavage, suggested the possibility that large agglomerates of SWCNTs caused the

granulomas (Warheit et al. 2004). A second study in rats, using SWCNT aspiration, also noted little change in the differentials of bronchoalveolar lavage and a relative paucity of histopathologic evidence of inflammation (Mangum et al. 2006). However, bronchoalveolar lavage fluid analysis is an insensitive indicator of granulomatous inflammation in the lung (D. Porter et al. 2007), providing a possible explanation for the paucity of bronchoalveolar lavage changes in SWCNT-exposed rats. Studies in mice demonstrated significant inflammation, confirmed that SWCNT-induced inflammation was often granulomatous, and, most importantly, demonstrated that inflammation was present whether the SWCNTs were inhaled or aspirated (Lam et al. 2004; Shvedova et al. 2008, 2005). In mice, the number of polymorphonuclear leukocytes and macrophages in bronchoalveolar lavage fluid increased after inhalation exposure and declined after 7 days (Shvedova et al. 2008). Inflammation was confirmed by histopathology and by elevated inflammatory cytokines (Shvedova et al. 2008). Thus, at least some SWCNTs were inflammatory in mice and that inflammation was not due to agglomeration (Shvedova et al. 2008).

Fibrosis has been demonstrated *in vivo* in the lung of SWCNT-exposed mice (Shvedova et al. 2008, 2005). However, the early onset of fibrosis in SWCNT-exposed mice is remarkable, with a 4-day inhalation exposure causing significant interstitial fibrosis as early as 1 day after the last exposure, with progression by day 28 postexposure (Shvedova et al. 2008). Even SWCNT exposures that fail to cause overt evidence of inflammation cause fibrosis by 3 weeks postexposure (Mangum et al. 2006). With aspiration of a highly dispersed SWCNT preparation designed to reduce agglomeration effects, the granulomatous inflammatory response was eliminated, neutrophilic inflammation rapidly resolved, but morphometric assessment of Sirius red stained tissue sections demonstrated significant increases in alveolar septal collagen, indicating alveolar fibrosis by 7 days postexposure (Mercer et al. 2008). Supporting these *in vivo* observations, increased proliferation, increased collagen production and increased expression of matrix metalloproteinase-9 have been demonstrated *in vitro* in human lung fibroblasts (L. Wang et al. 2010). Finally, the recent identification of SWCNTs in the lungs of World Trade Center responders with interstitial/parenchymal lung disease suggests that SWCNTs may also cause pulmonary fibrosis and inflammation in humans (M. Wu et al. 2010).

Like SWCNT exposure, MWCNT exposure causes pulmonary inflammation (Muller et al. 2005; D. Porter et al. 2010). The first inhalation study conducted on MWCNTs turned out to be a study of the effects of a mixture of MWCNTs and nanofibers (Lison and Muller 2008; McDonald and Mitchell 2008). In that study, exposures to concentrations of 5 mg/m<sup>3</sup> or less for 14 days produced little evidence of pulmonary inflammation but suppressed T-cell dependent immune functions (Mitchell et al. 2007). An intratracheal instillation study did not demonstrate inflammation or fibrosis but used MWCNTs 0.5–2 µm in length, shorter than the fiber dimensions of greatest toxicologic concern (Elgrabli et al. 2008). Recent MWCNT



studies generally used more completely characterized exposure materials than did early studies. Inhalation of MWCNTs for up to 13 weeks caused granulomatous inflammation and pleural thickening at exposure concentrations greater than  $6 \text{ mg/m}^3$ , while bronchoalveolar junction hypercellularity and interstitial fibrosis were demonstrated at exposures above  $0.4 \text{ mg/m}^3$  (Pauluhn 2010). After a single 6 hr inhalation exposure to  $30 \text{ mg/m}^3$  MWCNTs, mononuclear cell aggregates were seen on the pleural surface after 1 day, with subpleural fibrosis demonstrated at 2 and 6 weeks postexposure (Ryman-Rasmussen et al. 2009). MWCNTs were seen in subpleural tissue (Ryman-Rasmussen et al. 2009).

A recent study in mice exposed to MWCNTs by aspiration identified that MWCNTs, like SWCNTs, cause granulomatous inflammation and very early fibrosis at 7 days postexposure (Figure 4). This study also provides additional information on the histopathologic changes contributing to bronchoalveolar junction hypercellularity, pleural inflammation, and pleural thickening (D. Porter et al. 2010). In MWCNT-exposed mice, the inflammation was often bronchiolocentric with abundant macrophages and lesser numbers of multi-nucleated giant cells, neutrophils, and eosinophils. With time postexposure, lymphocytes and plasma cells were often seen in the highest exposure groups. Inflammation frequently extended to the pleura. Podo-planin immunofluorescence demonstrated peribronchiolar and subpleural lymphangiectasia (Figure 5). In addition, rare MWCNTs penetrated through the pleura to reach the mesothelium, the classical target for fiber-induced carcinogenesis (D. Porter et al. 2010). The dilated subpleural and peribronchiolar lymphatics may facilitate delivery of MWCNTs to the delicate bronchioalveolar junction and to the pleura because the lymphatic endothelium provides homing signals to direct alveolar macrophages into the pulmonary lymphatics to facilitate particle clearance to the tracheobronchial lymph nodes (Harmsen et al. 1987, 1985; L. Johnson et al. 2006; L. Johnson and Jackson 2008) and because macrophages phagocytize MWCNTs (D. Porter et al. 2010). Quantitative data, currently published only in abstract form, confirms that MWCNTs penetrate the pleura after a single 20-80  $\mu\text{g}$  aspiration exposure. At the 80  $\mu\text{g}$  exposure, 1 in 400 lung-deposited MWCNTs reach either the pleural surface or the subpleural alveolar epithelium (Mercer et al. 2010).

The similarities in physical shape and biological persistence between MWCNTs and amphibole asbestos fibers have been reviewed and have caused several research groups to hypothesize that MWCNTs, like asbestos, could cause mesothelioma (Donaldson et al. 2010; Jaurand, Renier, and Daubriac 2009; Pacurari, Castranova, and Vallyathan 2010; Takagi et al. 2008). Indeed, 87.5% of p53 heterozygous mice developed mesothelioma after intraperitoneal injection of 3 mg MWCNTs/mouse (Takagi et al. 2008). However, the 3 mg exposure is more than 10- to 100-fold greater than typical doses used for pulmonary exposures. The particle characteristics in the study also increased the chance of identifying the

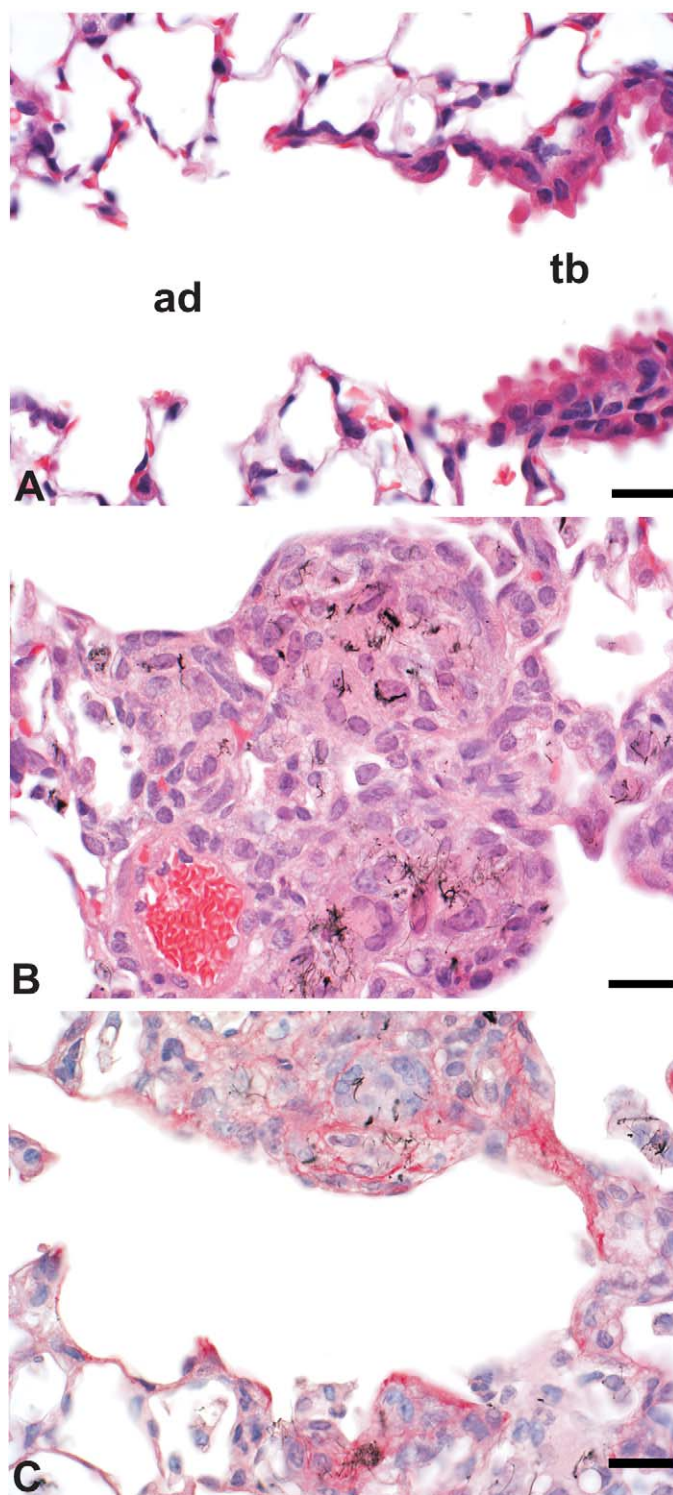


FIGURE 4.—Peribronchiolar granulomatous inflammation and rapid fibrosis following MWCNT aspiration in the mouse. (A) Normal terminal bronchiole (tb) and alveolar duct (ad) in a control mouse. (B) Peribronchiolar granulomatous inflammation in a mouse 7 days after aspirating 80  $\mu\text{g}$  MWCNTs. (C) Fibrosis is demonstrated by red staining in this Sirius Red stained section from a mouse 7 days after aspirating 80  $\mu\text{g}$  MWCNTs. Bar = 20  $\mu\text{m}$ .

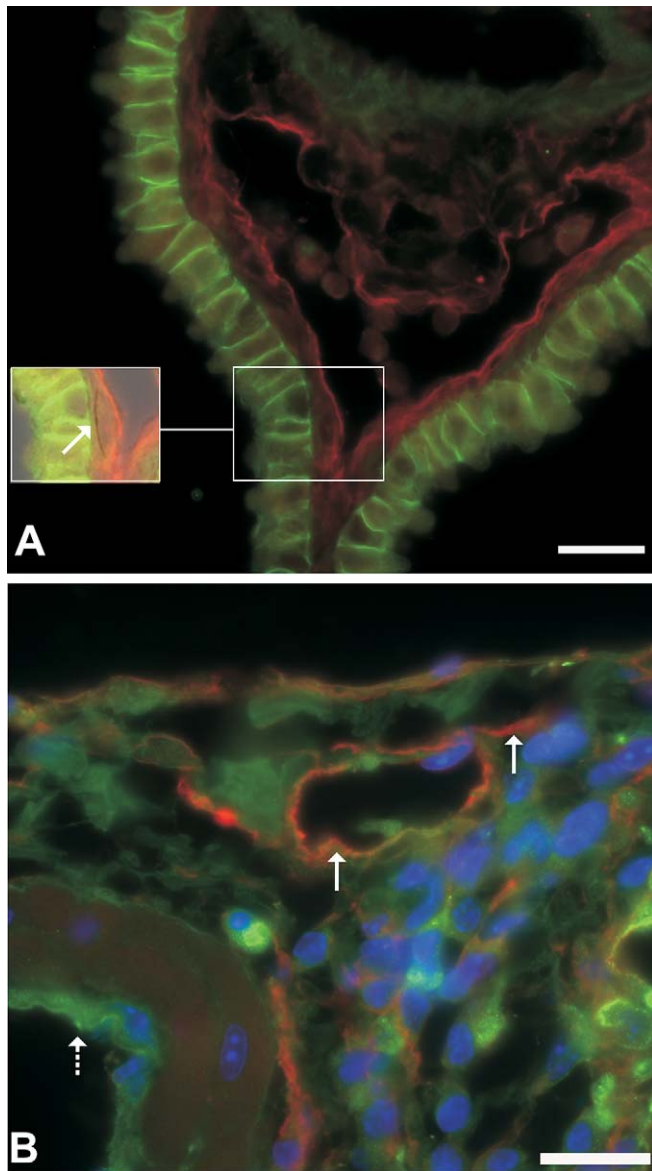


FIGURE 5.—Podoplanin and e-cadherin double-label immunofluorescent images of MWCNTs in tissue section illustrating changes in the lymphatics. (A) Lymphatic endothelium stains red using podoplanin indirect immunofluorescence and e-cadherin outlines the intercellular junctions of bronchiolar epithelial cells. The inset is a portion of the field that has been further illuminated by low levels of transmitted light to demonstrate a MWCNT (arrow) within the wall. Bar = 20  $\mu$ m. (B) Red staining of lymphatic endothelium demonstrates dilation of subpleural lymphatics (solid arrows). The vascular endothelium does not contain podoplanin and is unstained (dashed arrow). Bar = 20  $\mu$ m.

carcinogenicity of MWCNTs. The MWCNTs had a mean width of  $\sim 100$  nm, 27.5% of the nanotubes exceeded 5  $\mu$ m in length, and the iron content was  $\sim 0.35\%$ , dimensions similar to the dimensions of carcinogenic asbestos fibers and an iron content sufficient to generate reactive oxygen species through the Fenton reaction (Takagi et al. 2008). Additional

support for the carcinogenicity of these same long MWCNTs in mesothelial cells came from the subsequent demonstration of mesotheliomas in 86% of male rats receiving intrascrotal injections of 240  $\mu$ g MWCNTs/rat (1 mg/kg) (Sakamoto et al. 2009).

A subsequent 2-year bioassay of intraperitoneally injected MWCNTs averaging  $< 1$   $\mu$ m in length, with and without structural defects, failed to produce statistically significant numbers of mesotheliomas or other peritoneal tumors in Wistar rats. However, the comparisons were between any of the three MWCNT treated groups and the control group (where one rat developed a peritoneal mesothelioma) or with historical control numbers for mesotheliomas in rats (Muller et al. 2009). This negative finding may need to be viewed with caution since the MWCNTs used in the bioassay were short; there were 5 peritoneal mesotheliomas in 150 rats exposed to any MWCNT; and the finding of a primary peritoneal mesothelioma in a control Wistar rat is unexpected since mesothelioma is an uncommon spontaneous primary peritoneal tumor in this rat strain (Muller et al. 2009; Poteracki and Walsh 1998; Walsh and Poteracki 1994). An additional study that was negative for mesothelioma used gelatin capsules containing MWCNTs and SWCNTs implanted into the omentum of rats. However, the tendency for carbon nanotubes to agglomerate would be exacerbated by this exposure procedure and the experimental duration of 12 months would miss late-developing mesotheliomas (Varga and Szendi 2010). Thus, the potential for NPs with fiber-like dimensions to cause mesothelioma needs further study/investigation. A related issue is the potential for the NPs to cause subcellular injury and, in particular, to cause mitotic spindle changes reminiscent of amphibole asbestos and other hazardous fibers; these issues are addressed in the next two sections of this review.

For the nonfibrous NPs, the existing data on respirable particles provides important insights into how particle number, mass, surface area, surface properties, and composition affect particle toxicity and how nanoscaling may influence particle-induced histopathologic alterations. For soluble particles, toxicity is usually determined by the toxicity of the components. In addition, for metals and some other elements, which may have low solubility but high cytotoxicity, the composition may also have major effects on toxicity. For metals, such as hexavalent chromium, nickel, and beryllium, even low dissolution of metal ions can largely determine the toxicity (Cohen et al. 2007; Wise et al. 2004, 2006). Thus, “insoluble” nickel particles undergo dissolution in the acidic environment of cytoplasmic vacuoles, releasing nickel ion (Abbracchio, Simmons-Hansen, and Costa 1982; Costa et al. 2005). Since the composition of highly toxic, immunogenic, and/or soluble particles largely determines the toxicity, the composition also largely determines the histopathologic changes. For example, beryllium particles persist in the lung after exposure (Finch, Nikula, and Hoover 1998), but if the host MHC class II protein is a polymorph able to present beryllium to the immune system, that combination of an



immunogenic exposure and host susceptibility correlates with chronic beryllium disease (Falta et al. 2010; Fontenot and Amicosante 2008; McCleskey et al. 2009; Snyder et al. 2008). For the example above, inhaled beryllium will cause a lymphocytic to lymphogranulomatous response that is highly influenced by genotype (Fontenot and Amicosante 2008; Freiman and Hardy 1970; McCleskey et al. 2009; Nikula et al. 1997; Tarantino-Hutchison et al. 2009). Because the composition of soluble and/or acutely cytotoxic particles drives the toxicity, the mass of these particles deposited in the lung can be a major determinant of lung toxicity (Cassee et al. 2002). However, for these particulates, a major effect of decreased particle size is that it can increase pulmonary deposition (Cassee et al. 2002).

For poorly soluble particles of low acute cytotoxicity, histopathologic alterations in the exposed lung generally develop with time and are generally characterized by dose-dependent chronic inflammation, fibrosis, varying degrees of alveolar epithelial cell hypertrophy and hyperplasia, and, with some species and particles, lung tumors (Baan 2007; Bermudez et al. 2002, 2004; Muhle et al. 1995; D. Porter et al. 2001; Roller 2009). However, composition clearly matters, since exposure cessation causes regression of histopathologic alterations in TiO<sub>2</sub> exposed rats, but not in rats exposed to crystalline silica (Baggs, Ferin, and Oberdörster 1997; D. Porter et al. 2004). In addition, the alveolar epithelial proliferative response and lipoproteinosis are particularly prominent following crystalline silica exposure (Miller et al. 1987; Miller, Dethloff, and Hook 1986; Miller and Hook 1990; D. Porter et al. 2001). The characteristics of the particle surface may also influence particle toxicity. Particles may have nonhomogeneous composition that affects the particle surface and alters cytotoxicity (Wallace et al. 1990, 1985). When compared with stored silica or coated silica, freshly fractured silica particles, for example, produce more free radicals from their surface, increase the respiratory burst when phagocytized, and cause more pulmonary inflammation (Vallyathan et al. 1995, 1991, 1988). Some NPs appear to generate more hydroxyl radicals from their surface than larger, but still respirable, particulates (Donaldson, Beswick, and Gilmour 1996). Consistent with these earlier studies, surface reactivity (radical generation) of TiO<sub>2</sub> NPs can influence toxicity (Warheit, Reed, and Sayes 2009).

Although surface free radical generation and coatings clearly influence NP toxicity, there are general trends for NPs that cannot be explained by their surface chemistry and composition. When compared with larger respirable particles on a mass basis, NPs cause increased pulmonary inflammation (Oberdörster, Ferin, and Lehnert 1994; Renwick et al. 2004). Where particle composition and surface properties are held constant, particle toxicity then correlates well with surface area (Oberdörster, Ferin, and Lehnert 1994; Sager and Castranova 2009; Sager, Kommineni, and Castranova 2008). Since the surface area of NPs is much higher than for larger respirable particles, this may explain some of the enhanced toxicity of NPs.

While particle toxicity has historically been studied in the lung, recent studies suggest that NPs can be incorporated into gastrointestinal epithelial cells (Gaiser et al. 2009). Indeed, it

has been suggested that particles may also play a role in gastrointestinal disorders, including Crohn's disease (Lomer, Thompson, and Powell 2002). Additional information on the toxicologic pathology associated with particles and ultrafine particles can be found in several excellent reviews (Baan 2007; BeruBe et al. 2007; Donaldson et al. 2002; Maynard and Kuempel 2005; Nikula 2000; Oberdörster 1996, 2002; Oberdörster et al. 2000; Oberdörster, Oberdörster, and Oberdörster, 2005; Schmid et al. 2009; Stone, Johnston, and Clift 2007).

Nonfibrous NPs can also have toxic effects that are not seen with larger particles. Among the current products using engineered NPs, silver NPs appear to be the most common, and the toxicity of silver NPs has recently been reviewed (Johnston et al. 2010). When silver NPs are inhaled, silver is detectable in multiple tissues (Ji et al. 2007; W. Kim, Kim, et al. 2009; Sung et al. 2009; Takenaka et al. 2001). After a 90-day exposure, pulmonary inflammation is demonstrable, while biliary hyperplasia in the liver suggests hepatic effects of the redistributed silver (Sung et al. 2009). Additional recent studies on silver NPs suggest that similar to fibrous NPs, cell membranes may be ineffective in containing the nonfibrous NPs. When injected subcutaneously, silver NPs, unlike larger silver microparticles, distributed widely to many tissues (Tang et al. 2009). This demonstrates the principle that NPs can pass cell membranes and emphasizes the need to consider the potential for NPs to reach distant target tissues. In addition, the antimicrobial properties of silver NPs and their use in open wounds combined with converging lines of evidence suggesting potential neurotoxicity and vascular effects of silver NPs indicate a need for additional research (Bhattacharyya and Bradley 2006, 2008; Kalishwaralal et al. 2009; Powers et al., 2010; Rahman et al. 2009; Rosas-Hernandez et al. 2009; Sharma et al., 2010; Tang et al. 2009; Y. Wu et al. 2010). While current data on silver NPs suggest that at least some of the vascular and neurotoxic effects are associated with direct effects of NPs after migration, systemic effects may or may not involve translocation of the NPs (see section on systemic effects). Indeed, a recent *in vitro* study using RAW264.7 macrophages suggests that silver NPs can deplete cellular stores of reduced glutathione and increase secretion of TNF $\alpha$  and NO (Park et al. 2010). Another consideration is that tissue silver concentration and toxicity may reflect silver NPs or ionized silver (Johnston et al. 2010; Park et al. 2010).

Studies of how NPs affect mixed exposures are just beginning. MWCNT inhalation causes airway fibrosis and elevates IL-5 mRNA in ovalbumin-sensitized mice, changes not seen in mice exposed to ovalbumin or MWCNTs alone (Ryman-Rasmussen et al. 2009). TiO<sub>2</sub> NPs act as adjuvants when mice are intraperitoneally sensitized with ovalbumin and then challenged by ovalbumin aerosol. Either TiO<sub>2</sub> NPs or the classic adjuvant, Al(OH)<sub>3</sub>, enhance ovalbumin sensitization with increases in ovalbumin-specific IgE and IgG<sub>1</sub> in serum and increases in eosinophils, neutrophils, and lymphocytes in bronchoalveolar lavage fluid (Larsen et al. 2010). Similarly, in traditionally ovalbumin-sensitized mice, inhaled carbon black NPs enhance IL-4, IL-5, IL-13, and cellular infiltration



upon subsequent ovalbumin challenge (Alessandrini et al. 2006). Thus, the NPs investigated to date appear to enhance sensitization and inflammation, and in some scenarios, the NP effect may be more than additive. Since environmental and occupational exposures to NPs are likely to be part of mixed exposures, the potential interactions of NPs in mixed exposures will undoubtedly receive additional future investigation.

#### SUBCELLULAR MORPHOLOGIC CHANGES IN THE NP-EXPOSED CELLS

Inhalation is a major route of exposure to engineered NPs (D. Johnson et al. 2010). The first-generation products of nanotechnology include nanotubes, nanofibers, and nanowires. For these NPs, the aspect ratio, the ratio of length to width, can be quite high (D. Porter et al. 2010; Takagi et al. 2008). The existing literature on natural fibers is useful for guiding investigation of the newer engineered NPs and the potential for NPs with high aspect ratio to injure intracellular organelles.

For the classic carcinogenic durable fibers, amosite and crocidolite asbestos, many of these fibers have nanoscale diameters and higher aspect ratios that are associated with the carcinogenicity of inhaled asbestos (Churg 1988; Murai et al. 1995; Stanton et al. 1981). In his final posthumously published paper, Mearl Stanton along with several colleagues noted that the probability of experimentally induced pleural sarcomas was highest when asbestos fibers were 250 nm or less in diameter and 8  $\mu$ m or greater in length (Stanton et al. 1981). Importantly, some carcinogenic asbestos fibers have diameters < 100 nm and are natural mineral NPs (Stanton et al. 1981). Negligible phagocytosis of the long, thin asbestos fibers was suggested as a possible cause of the relationship between asbestos fiber dimensions and carcinogenesis (Stanton et al. 1981). Incomplete, rather than negligible, phagocytosis of long asbestos fibers was an observation of Beck and coworkers (Beck, Holt, and Manojlovic 1972).

Generation of free radicals during incomplete phagocytosis of long fibers has long been suggested as a potential factor in asbestosis and asbestos carcinogenicity (Beck, Holt, and Manojlovic 1972; Kamp et al. 1992). However, asbestos fibers also inhibit cytokinesis and can cause the formation of cells joined by fiber-containing intercellular bridges or cause bi- and tri-nucleated cells (Jensen and Watson 1999). In addition, asbestos fibers cause multinucleated giant cells to form via cell fusion (Jensen and Watson 1999). Whether from failure of cytokinesis or from cell fusion, the very large multinucleated giant cells seen in asbestos exposure should have sufficient cytoplasm to complete the phagocytic process, raising some questions regarding whether incomplete phagocytosis is the result of fibers too long for phagocytosis or a fiber so thin that it cannot be retained within a lipid bilayer. Indeed, in Mearl Stanton's final posthumous paper, there is a suggestion that the thin fibers, by permitting cell survival, might be particularly important in asbestos carcinogenesis. In the final paragraph, the paper considers the mechanism of carcinogenesis from long, thin fibers and notes: "A provocative explanation relates to the ability of fine, long fibers to penetrate cells without killing

them" (Stanton et al. 1981). Consistent with that hypothesis, a subsequent study indicates that *in vivo* mesothelioma induction by inorganic fibers such as asbestos correlates with the ability to cause chromosomal missegregation, not with cytotoxicity (Yegles et al. 1995). Indeed, thin asbestos fibers have been associated with human mesothelioma even when they are short (Suzuki, Yuen, and Ashley 2005). A final consideration of the implications of previous asbestos fiber research comes from another statement from Stanton and coworkers (1981): "a reasonable conclusion is that the long, thin fibrous structure is critical to the carcinogenicity of these minerals. Studies of fibrous samples within very narrow dimensional ranges would be valuable in establishment of this hypothesis, but these ideal samples are not available." However, with the new fibrous particles of concern today, including the nanotubes, it is indeed possible to have fibers with very tightly controlled dimensions and explore hypotheses that have long been important to toxicologists and pathologists.

Among the first-generation NPs, SWCNTs, like long thin asbestos fibers, have a high aspect ratio, are extraordinarily thin, and, unless they are functionalized, can have very low levels of *in vivo* phagocytosis (Konduru et al. 2009; Mercer et al. 2008). However, *in vitro* studies demonstrate that SWCNTs can enter cells even without functionalization, and endocytosis appears to play a major role in SWCNT entry into NIH-3T3 cells (Jin et al. 2009; A. Porter et al. 2007). SWCNTs even penetrate nuclei, and this may be associated with their *in vitro* cytotoxicity (A. Porter et al. 2007). Importantly, acid treatment is sometimes used to remove metal catalysts from SWCNTs but can functionalize SWCNTs and potentially decrease toxicity (Mangum et al. 2006; A. Porter et al. 2009). Indeed, both *in vitro* nuclear localization and cytotoxicity may decrease with functionalization (A. Porter et al. 2009).

There are additional similarities between asbestos and SWCNT effects. As with asbestos exposure, failure of cytokinesis with formation of intercellular bridges has been reported in SWCNT-exposed macrophages (Mangum et al. 2006). In addition, SWCNTs cause somatic cell mutations in the lung in addition to the *in vivo* inflammation, fibrosis, and free radical generation noted in the previous section (Mangum et al. 2006; Mercer et al. 2008; Shvedova et al. 2008, 2005; Warheit et al. 2004). Like asbestos, many of the effects of SWCNTs are not seen with carbon black and appear attributable to particle shape as opposed to chemical composition (Mangum et al. 2006). During the histopathologic evaluation of one SWCNT inhalation study, the pathologist noted a dividing macrophage where SWCNT nanoropes bridged anaphase chromosomes from opposite sides, with additional SWCNTs located at the spindle poles (Shvedova et al. 2008). A follow-up study demonstrated high levels of centrosomal fragmentation and chromosomal missegregation in cells exposed to SWCNTs *in vitro* (Sargent et al. 2009). This underscores the importance of a pathology evaluation that is particularly detailed in respect to the target cells described in the existing literature on the pathogenesis of diseases associated with exposure to natural NPs, such as the thinnest asbestos fibers. Additional details

regarding interactions between SWCNTs and the mitotic spindle are described in the next section of this review.

In contrast to SWCNTs, many MWCNTs are avidly phagocytized by macrophages (Cheng et al. 2009; D. Porter et al. 2010). In addition to phagocytosis, MWCNTs can penetrate the cytoplasm of macrophages and epithelial cells by apparent direct penetration of the cytoplasm (Cheng et al. 2009; D. Porter et al. 2010). Within macrophages, MWCNTs frequently extend from the cytoplasmic margins and penetrate subcellular structures such as nuclei (Cheng et al. 2009). In some cases, extension of MWCNTs through the cytoplasmic membrane may represent incomplete phagocytosis; but in other cases, MWCNTs appear to mechanically penetrate the cytoplasm (Cheng et al. 2009; D. Porter et al. 2010). Indeed, in mobile cells such as macrophages, and in tissues such as lung and heart that repeatedly expand and contract, it seems unreasonable to expect cell membranes comprised of lipid bilayers to effectively contain fibrous NPs of only a few nm diameter. Thus, one can expect migration of fibrous NPs within mobile cells and tissues with resulting direct damage to cell membranes and intracellular organelles. Pathologists and toxicologists should be aware of this potential when evaluating *in vivo* studies and should also be aware that the lack of mobility and pressure changes in standard *in vitro* assays can alter particle migration and represents a limitation for those studies.

#### MITOTIC SPINDLE INTERACTIONS

*In vivo* exposure to carbon nanotubes have indicated the potential for carbon nanotube-induced genetic damage. D. Porter et al. (2010) and Shvedova et al. (2008) reported macrophages without nuclei, multinucleate epithelial cells as well as mutations in K-ras following exposures to carbon nanotubes. As discussed previously, SWCNTs have been observed in the furrow separating dividing cells resulting in a failure of cytokinesis (Mangum et al. 2006). Muller and colleagues recently demonstrated that MWCNTs induce micronuclei in rat type II epithelial cells three days after intratracheal instillation, indicating either significant chromosome breakage or mitotic spindle disruption (Muller, Decordier, et al. 2008).

*In vitro* studies have demonstrated that SWCNTs have a strong association with DNA. SWCNTs bind to telomeric DNA, intercalate into DNA, and induce alterations in DNA structure (X. Li, Peng, and Qu 2006). Kisin et al. (2007) observed DNA damage after *in vitro* exposure to SWCNTs. Later *in vitro* investigations demonstrated micronuclei following exposure to SWCNTs or MWCNTs (Doak et al. 2009; Lindberg et al. 2009; Muller, Huaux, et al. 2008). More recently, Sargent and colleagues (2009) demonstrated SWCNTs in the nucleus, in association with the DNA and microtubules of the mitotic spindle. The SWCNTs were strongly associated with the mitotic spindle pole bodies (centrosomes). The centrosomes were fragmented and the mitotic spindles were disrupted in 80% of the cells following exposure to the highest dose of SWCNTs. The disruption of the mitotic spindle resulted in errors in chromosome number in 80% of the SWCNT-exposed cells (Sargent

et al. 2009). Three-dimensional reconstruction of 0.1  $\mu\text{m}$  optical sections confirmed the association of the nanotubes with multiple subcellular structures. Figure 6 shows the nanotubes in strong association with the centrosome fragments and the DNA. The nanotubes displace the microtubules at the centrosome forming an aberrant spindle-like structure.

The diameter of SWCNT nanoropes can be comparable to the microtubules that form the mitotic spindle (Figure 7) (Lu 1997; Pampaloni and Florin 2008). In addition, carbon nanotubes have many physical properties in common with microtubules including bending properties, high resiliency, stiffness, low density, and high strength (Pampaloni and Florin 2008). Recent laboratory studies indicate that carbon nanotubes can form functional nanotube/tubulin hybrids (Dinu et al. 2009). The similar size, shape, and physical properties make it possible for carbon nanotubes to displace critical cellular targets including the mitotic spindle.

#### SYSTEMIC EFFECTS

##### *Cardiovascular Effects*

A consistent association between levels of inhaled particulates in ambient air and a significant elevation in cardiovascular mortality and morbidity has been reported in a number of epidemiological studies (Abbey et al. 1999; Dockery et al. 1993; Pope et al. 1995; Samet et al. 2000). However, the mechanisms by which inhaled particulates could induce cardiovascular effects remains to be fully elucidated.

Recent studies have reported that pulmonary exposure to engineered NPs also results in a variety of cardiovascular effects. Z. Li et al. (2007) exposed mice to purified single-walled carbon nanotubes (10–40  $\mu\text{g}/\text{mouse}$ ) by pharyngeal aspiration and monitored oxidant stress in aortic and cardiac tissue at 1, 7, and 28 days postexposure. Such an exposure caused rapid but transient pulmonary inflammation (Shvedova et al. 2005). No evidence of oxidant stress to cardiovascular tissue was noted at 1 day postexposure. However, at 7 days postexposure, significant increases in oxidant damage to aortic mitochondrial DNA and in heme oxygenase 1 activity in aortic and cardiac tissue were reported. The heme oxygenase 1, a marker of cardiovascular oxidant stress, returned to control levels by 28 days postexposure, indicating that a single aspiration of SWCNTs can cause transient cardiovascular effects. Z. Li et al. (2007) also reported data supporting subchronic effects resulting from multiple exposures of ApoE<sup>-/-</sup> mice (genetically susceptible to atherosclerosis) to purified SWCNTs (aspiration of 20  $\mu\text{g}/\text{mouse}$ , every 2 weeks, for 2 months). Extended aspiration of SWCNTs increased aortic plaque formation by 65% and brachiocephalic artery plaque area by 113%. Since plaque formation elevates peripheral resistance and is a risk factor for cardiovascular disease, these data suggest that cardiovascular complications may follow long-term exposure of workers to airborne carbon nanotubes.

Nurkiewicz et al. (2008) reported that inhalation of titanium dioxide NPs, at lung burdens that did not elevate bronchoalveolar lavage markers of pulmonary inflammation or damage,

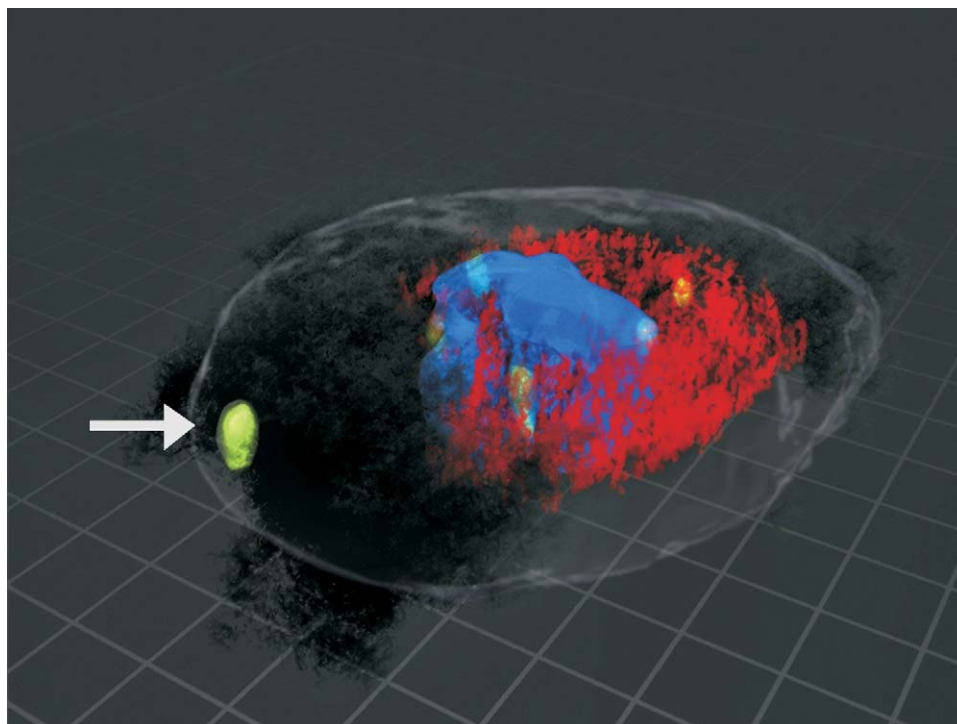


FIGURE 6.—3D reconstruction showing the interaction of the centrosome, the DNA, and the microtubules with SWCNTs. BEAS-2B cells were grown in culture to 70% confluence and then treated with SWCNTs at 24, 48, or 96  $\mu\text{g}/\text{cm}^2$  cell plate surface area. The tubulin was stained red using Spectrum red and indirect immunofluorescence. The centrosomes are stained green using Alexa 488 and indirect immunofluorescence. The DNA was detected by DAPI and was blue. The nanotubes were imaged using differential interference contrast. A minimum of 100 cells per sample and a total of 300 cells of good centrosome and good mitotic spindle morphology were analyzed for each treatment dose. To localize carbon nanoropes to the microtubules of the mitotic spindle and the centrosome, serial 0.1  $\mu\text{m}$  optical slices were obtained to create a Z-stack (Sargent et al. 2009). The Z-stack images were used to construct a 3-dimensional image using Light-Wave software (Haas and Fischer 1997). The mitosis is multipolar and has fragmented centrosomes. The 3-dimensional image shows nanotubes in association with the centrosomes, the microtubules, and the DNA. The white arrow indicates a fragmented centrosome that was associated with SWCNTs. The nanotubes form an aberrant spindle-like structure that is pulling the DNA toward the nanotubes.

decreased the ability of arterioles in systemic skeletal muscle to respond to intravascular infusion of dilators 24 hours postexposure. On an equal mass lung burden basis, titanium dioxide NPs were 7 times more potent than fine-sized titanium dioxide particles. Recently, LeBlanc et al. (2009) showed similar impairment of endothelium-dependent vasodilation in coronary arterioles 24 hours after inhalation of low lung burdens of titanium dioxide NPs. Such systemic microvascular dysfunction would result in an inability to alter peripheral resistance and increase coronary blood flow during exercise. This would result in an increased workload and decreased oxygen delivery to the heart. In the case of a person with preexisting cardiovascular disease, the failure to modify coronary hemodynamics in response to exercise may precipitate a cardiovascular event.

#### *Possible Mechanisms Explaining Cardiovascular Effects*

**1. Translocation of NPs to Systemic Tissue:** It has been proposed that inhaled NPs may cause adverse systemic effects by escaping normal pulmonary clearance by alveolar macrophage phagocytosis, entering the pulmonary capillaries, and

translocating to systemic organs (Oberdörster, Oberdörster, and Oberdörster 2005). Such translocation of NPs versus fine-sized particles would be favored because of their ultrafine size and ability to cross membrane barriers. Oberdörster, et al. (2002) reported that inhaled radiolabeled carbon NPs appeared in the liver of rats 24 hours after exposure. In addition, Nemmar et al. (2002) observed NPs in the blood of human volunteers after inhalation of technetium-labeled carbon NPs. However, these results have been questioned for the following reasons: (1) The Oberdörster, et al. (2002) study involved whole-body inhalation. Thus, oral ingestion during grooming may have resulted in NPs in the liver due to ingestion rather than pulmonary translocation. (2) It is possible that the label dissociated from the NPs in the Nemmar et al. (2002) study. Indeed, inhalation exposure of rats to radiolabeled iridium NPs via a tracheal tube resulted in low translocation (<1%) of NPs from the lung to systemic organs over a 7 day postexposure period (Kreyling et al. 2002). Following pharyngeal aspiration of colloidal gold-labeled SWCNTs in the mouse, no measurable levels of labeled SWCNTs were found in brain, heart, and kidney by neutron activation analysis for gold label (Mercer et al. 2009). Roberts et al. (2009) monitored the translocation of quantum dots from the lung



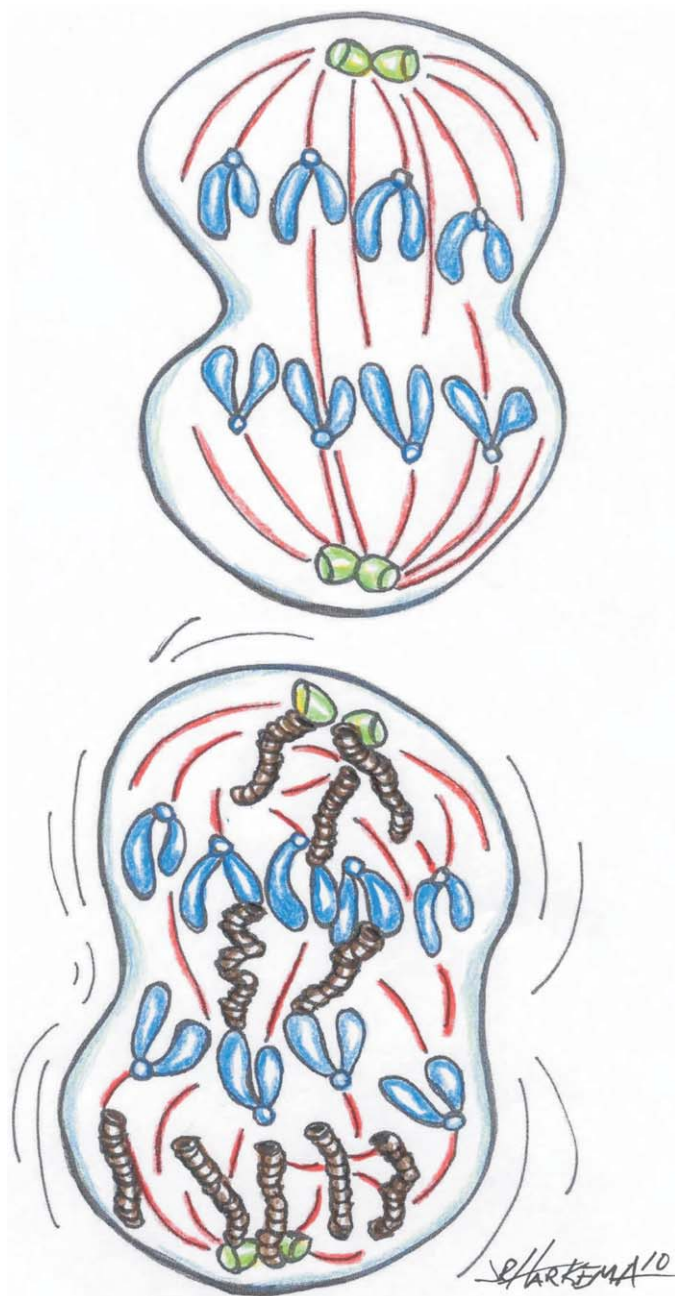


FIGURE 7.—Potential interactions between NPs and the dividing cell. In normal mitosis (top), the centrosomes (green) and microtubules (red) of the mitotic spindle assure that each daughter cell receives the same number of chromosomes. NPs can disrupt the orderly segregation of chromosomes into daughter cells (bottom). SWCNTs (brown) form nanoropes that may vary in diameter but can be similar to the diameter of the microtubules of the mitotic spindle. SWCNT nanoropes interact with centrosomes, microtubules, and DNA, disrupting chromosomal segregation and cause potential aneuploidy.

of rats after intratracheal instillation. They reported that translocation to systemic tissue was low at pulmonary doses that did not cause a breakdown in air/blood barrier integrity.

However, morphologic studies support translocation of particulates from the lung to the cardiovascular tissue in necropsy

specimens from Mexico City dogs (Calderón-Garcidueñas et al. 2001). In addition, MWCNTs enter the lymphatics, some reach the tracheobronchial lymph nodes, and are even seen within macrophages in the medullary sinuses, suggesting that a percentage may eventually reach the vasculature via the thoracic duct (Hubbs et al. 2009; D. Porter et al. 2010).

Considering the dilution of translocating NPs by the blood volume, concentrations of NPs delivered directly to the cardiovascular tissue are likely to be low. However, the chronic effects of particle accumulation may be important (Calderón-Garcidueñas et al. 2001). In the absence of particle translocation, gradual dissolution of NPs over time, particularly of lung-deposited metal and metal-based NPs, can result in extrapulmonary distribution of the soluble elemental component(s) of the NPs. When this occurs, toxicity may be mediated by the soluble toxic metal. Therefore, the direct action of NPs in systemic organs and the slow dissolution of soluble components may be important in the chronic effects of NPs but is unlikely to explain the rapid, acute, cardiovascular effects following pulmonary exposure described above. This suggests that the mediators for the acute cardiovascular effects may be delivered via the vasculature.

**2. Effect of Blood Cytokines on Systemic Tissue:** Cytokines can have broad effects on multiple tissues, including both the cardiovascular and nervous system. Blood levels of inflammatory markers (IL-5, IL-6, KC/GRO $\alpha$ , and CCL22) were significantly elevated 4 hours after aspiration of MWCNTs in mice (Erdely et al. 2009). These findings suggested that these inflammatory mediators could be carried by the blood to systemic tissue to induce adverse effects, such as those reported by Z. Li et al. (2007). In this study, pulmonary exposure levels of MWCNTs were high enough to cause an 83-fold increase in neutrophils harvested by bronchoalveolar lavage and a 3-fold increase in systemic neutrophils. However, microvascular dysfunction of systemic and coronary arterioles was reported following pulmonary exposure to levels of titanium dioxide NPs that did not increase lavagable or peripheral blood neutrophils (LeBlanc et al. 2010; Nurkiewicz et al. 2008). Therefore, an elevation of blood-borne inflammatory mediators does not appear to completely explain all cardiovascular effects reported following pulmonary exposure to NPs.

**3. Activation of Peripheral Neutrophils:** Nurkiewicz et al. have shown that pulmonary exposure to particles enhanced adhesion and rolling of polymorphonuclear leukocytes to the systemic microvessels and increases the generation of reactive oxygen species at the vessel wall (Figure 8) (Nurkiewicz et al. 2006, 2008). Furthermore, treatment of microvascular tissue with reactive oxygen species scavengers or an inhibitor of myeloperoxidase partially reversed the inhibitory effect of pulmonary NPs exposure on microvascular nitric oxide production and resultant vasodilation in response to endothelial stimulation. This may be due to the location of myeloperoxidase between the *tunica muscularis* and the endothelium of the inflamed vasculature, the ability of myeloperoxidase to denature arginine, and the resulting prevention of nitric oxide production. A

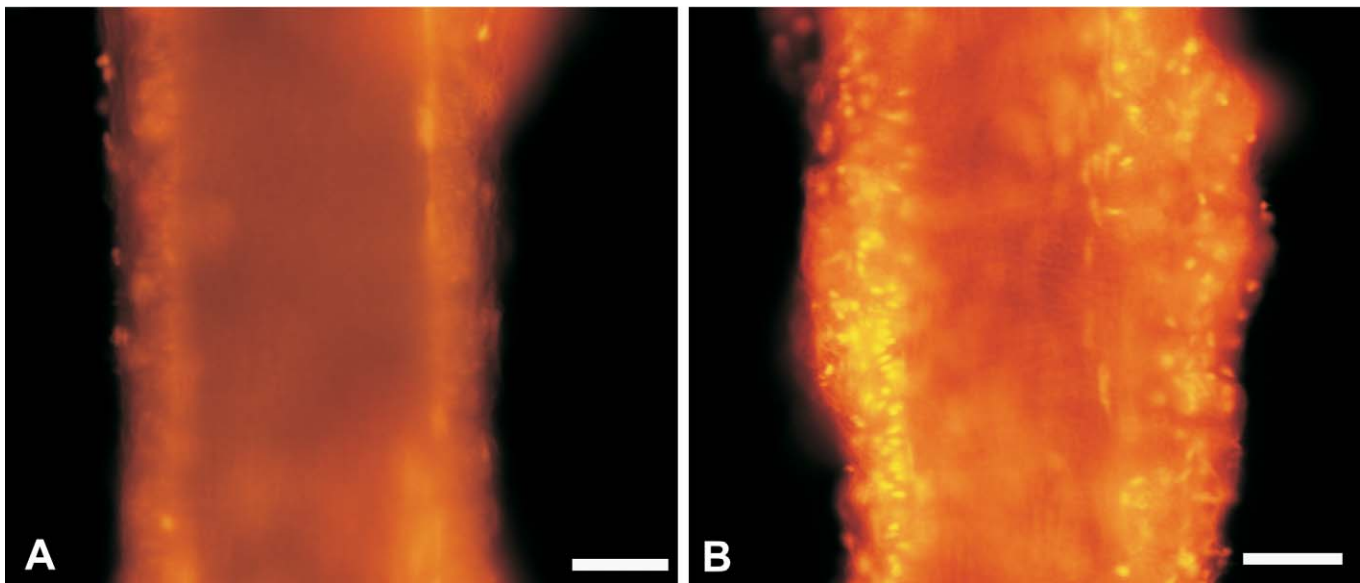


FIGURE 8.—TiO<sub>2</sub> NP inhalation causes oxidative stress in coronary arterioles. (A). Representative coronary arteriole from a sham-control rat. (B). Representative coronary arteriole from a rat exposed to 10 µg TiO<sub>2</sub> NP (measured lung deposition). Arterioles were incubated with dihydroethidium (DHE, 10<sup>-4</sup> M, 20 minutes). Superoxide oxidizes DHE to form ethidium bromide. Ethidium bromide is intercalated into nuclear DNA, and is fluorescent at 480 nm. Note the increased density of fluorescent nuclei in the microvascular wall of the NP exposed rat in B. Differences in dye loading are resolved by measuring background DHE fluorescence at 330 nm and subtracting this image from the ethidium bromide image. The remaining fluorescent light intensity is quantified with image analysis software. Measurements are made 24 hours after NP inhalation. Bar = 50 µm.

similar mechanistic effect of microvascular oxidant stress was seen in coronary arterioles after NP inhalation (LeBlanc et al. 2010). Therefore, the following scenario has been proposed to explain systemic microvascular dysfunction resulting from pulmonary exposure to NPs:

1. localized alveolar inflammation at the site of particle deposition,
2. potentiation of neutrophils as they flow through adjacent pulmonary capillaries,
3. adherence of neutrophils to systemic microvascular walls,
4. hemoprotein deposition in the microvascular wall,
5. generation of reactive oxidant species at the microvessel wall,
6. scavenging of endothelial-derived nitric oxide,
7. decreased nitric oxide production, and
8. impairment of nitric oxide-dependent microvascular dilation (Nurkiewicz et al. 2008).

**4. Activation of Neuronal Input to Systemic Tissue:** It is possible that sensory neurons are activated at the site of pulmonary deposition of NPs and that a neuronal signal could be sent to the brain and then to the cardiovascular tissue to alter microvascular function. Evidence to support such a mechanism is from data demonstrating transport of particles from airway sensory nerves (Hunter and Dey 1998; Hunter et al. 2000; Hunter and Undem 1999; Z. Wu et al. 2008). Preliminary data from our laboratories indicate the blockade of neural input to systemic microvascular smooth muscle with tetrodotoxin partially

reversed dilatory inhibition in response to pulmonary exposure to NPs (Nurkiewicz et al. 2009). Further experiments are ongoing to elucidate this mechanism.

#### *Central Nervous System Effects*

The central nervous system (CNS) is also a potential target for NP toxicity. Following pulmonary deposition, NPs can permeate the lung-blood barrier by endocytosis, transcytosis, or stochastic transport and enter the systemic circulation (Oberdörster, Oberdörster, and Oberdörster 2005). NPs deposited in the lungs have been reported to translocate to the circulatory system and eventually to organs like liver, kidney, and brain (Nemmar et al. 2001; Shimada et al. 2006). Similarly, NPs inhaled through the nose can translocate to the brain via the olfactory neurons (Elder et al. 2006; Hunter and Undem 1999; Oberdörster et al. 2004). In addition, retrograde translocation of fluorescent beads from sensory nerve fibers that project into the airway epithelium of the nose, trachea, and intrapulmonary airways has been documented in experimental animals (Figure 9) (Hunter and Dey 1998; Hunter and Undem 1999; Z. Wu et al. 2008). This suggests multiple potential pathways for movement of NPs from the lung to extrapulmonary tissues (Figure 10). Calderón-Garcidueñas and coworkers have documented the accumulation of particulates in olfactory nerves, the olfactory bulb of the brain, Kupffer cells of the liver, and also demonstrated NPs in the erythrocytes and endothelial cells in lung capillaries of autopsy specimens from Mexico City residents (Calderón-Garcidueñas et al. 2008). Translocation of NPs from systemic circulation or neuronal

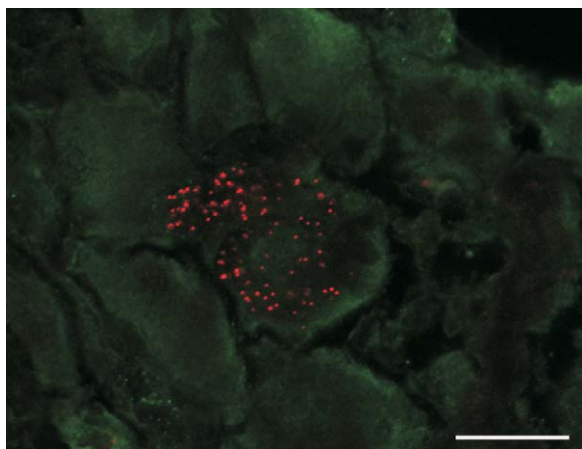


FIGURE 9.—Red rhodamine beads in a neuron cell body of the jugular ganglion demonstrate neuronal transport of particles from the trachea of a rat after intratracheal instillation of fluorescent beads. Bar = 20  $\mu$ m.

transport to the brain can have far reaching consequences by causing irreversible damage to the CNS. Importantly, the limited regenerative capability of the CNS, its cellular heterogeneity and high lipid content may render it more vulnerable to toxic insults.

Particle size and/or shape can be a key determinant in the biodistribution of NPs. Several studies have employed model NPs as tools to understand the influence of particle size on kinetics of *in vivo* tissue distribution, including translocation to the brain. Following intraperitoneal administration of 50 nm silica-overcoated magnetic NPs (as a model NP), J. Kim et al. (2006) have shown migration of these particles across the blood-brain barrier (BBB) and subsequent deposition in the brain. Similarly, Kwon et al. (2008) exposed mice by nose-only inhalation to 50 nm fluorescent magnetic NPs to evaluate their body distribution. Using magnetic resonance imaging and confocal laser scanning microscopy, they showed variable distribution of the fluorescent NPs in the brain, as well as in other organs like heart, kidney, liver, lung, spleen, and testis (Kwon et al. 2008). Following intravenous administration of varying sizes (10–200 nm) of gold (Au) NPs to mice or rats, particle-size dependent biodistribution has been demonstrated. Au NPs of 10–50 nm in diameter were shown to accumulate in the brain, as well as organs like blood, liver, lung, kidney, spleen, and stomach (De Jong et al. 2008; Lasagna-Reeves et al. 2010; Sonavane, Tomoda, and Makino 2008). On the other hand, larger (100–250 nm) Au particles accumulated predominantly in the blood, liver, lung, and spleen but not brain (De Jong et al. 2008; Sonavane et al. 2008). Subcutaneous injections of silver (Ag) NPs resulted in their translocation to blood and subsequent distribution to organs like brain, kidney, liver, lung, and spleen (Tang et al. 2009). However larger, fine silver particles (microparticles) failed to reach either blood or other organs when administered in a similar manner (Tang et al. 2009). These findings suggest that particle size is a critical factor for brain delivery of NPs. Such observations may have

significant impact on nanotechnology product development considering the market potential in biomedicine, particularly for CNS drug delivery, diagnostics, and therapeutics.

The surface chemistry of the NP can also influence its translocation and/or permeability across the BBB. Indeed, NP surface charge has been shown to affect the integrity and permeability of the barrier (Lockman et al. 2004). Utilizing emulsified wax NPs with neutral, anionic, or cationic surface charge, Lockman et al. (2004) evaluated BBB integrity and brain permeability by *in situ* rat brain perfusion. From this study, it was evident that neutral NPs did not alter BBB integrity; however, cationic NPs disrupted the BBB and exhibited potential toxic properties. Although the toxic properties of anionic NPs were not fully characterized in this study, the brain uptake rates of these materials were found to be more efficient than neutral or cationic particles (Lockman et al. 2004). Particle surface charge may also influence particle translocation and cellular responses. Exposure of immortalized BV2 brain microglia to inert spherical polystyrene microparticles (SPM) with carboxyl (COOH-; net negative) or dimethyl amino ([CH<sub>3</sub>]<sub>2</sub>-N-; net positive) zeta potentials resulted in oxidative burst, increased caspase activity, and release of inflammatory cytokines (Veronesi et al. 2008). Gene expression analysis of these exposures revealed that a large number of genes altered were distinct to a specific functionalization (Veronesi et al. 2008), suggesting that functionally charged particles can differentially activate cellular mechanisms in the CNS.

Intraperitoneal administration of 25 nm Ag NPs caused alterations in the expression of genes associated with oxidative stress in specific brain areas that resulted in apoptosis and neurotoxicity (Rahman et al. 2009). Subcutaneous administration of Ag NPs was shown to cause BBB changes, neuronal injury, and astrocytic swelling (Tang et al. 2009). Administration of Ag and Cu NPs (50–60 nm) via intravenous, intraperitoneal, or intracerebral routes caused disruption of BBB function and induced brain edema in rats (Sharma et al. 2010). Inhalation of ultrafine manganese oxide resulted in translocation of these particles to the CNS (Elder et al. 2006). Nano-sized TiO<sub>2</sub> (Degussa P25) has been shown to trigger oxidative stress response and interfere with mitochondrial function in brain BV2 microglial cells (Long et al. 2006). Administration of 80 nm TiO<sub>2</sub> NPs to mice produced subtle brain lesions and vacuolation in hippocampal neurons (J. Wang et al. 2007). Neuroinflammation in discrete brain areas was observed 24 hours following pharyngeal aspiration of titanium dioxide nanowires but not titanium dioxide nanospheres (D. Porter et al. 2008).

Like metal or metal-oxide-based NPs, carbon-based NPs can also potentially elicit neurotoxicity. A few studies have investigated the neurotoxic effects of carbon-based NPs, indicating the involvement of neuroinflammatory and oxidative stress events. Intranasal instillation of ultrafine carbon black induced the expression of proinflammatory cytokines and chemokines in the olfactory bulb (Tin Tin Win et al. 2006). When administered orally, water-miscible <sup>14</sup>C<sub>60</sub>-fullerene has been shown to penetrate the blood-brain barrier (Yamago et al.



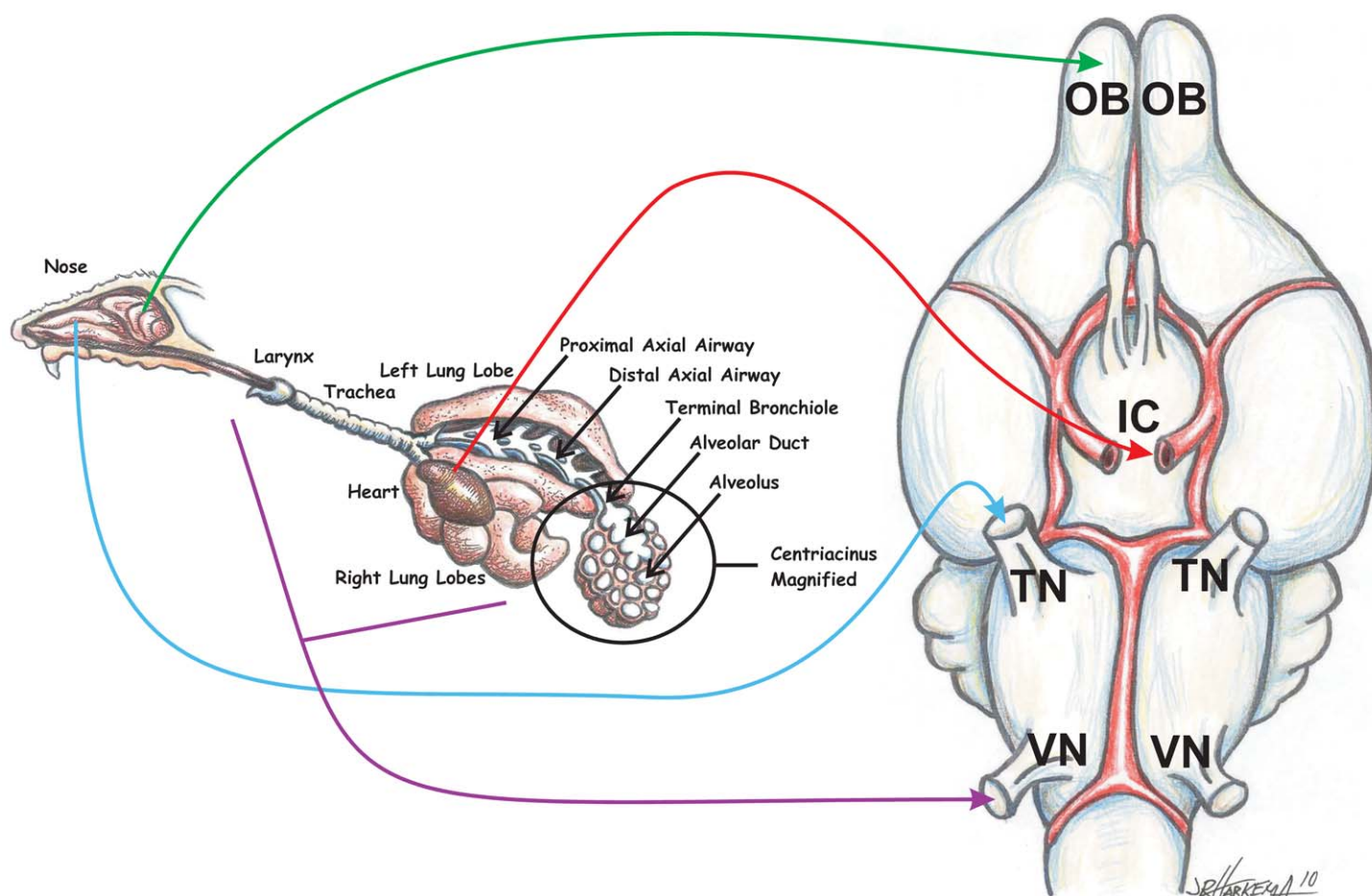


FIGURE 10.—The major potential pathways for inhaled NP transport into the brain. NPs can be carried to the brain via the vasculature, neuronal transport from the olfactory neurons in the olfactory epithelium of the nose and then through the cribriform plate to the olfactory bulb, neuronal transport from sensory nerves of the nasal passageways to the trigeminal nerve, or neuronal transport from sensory nerves of the trachea and intrapulmonary airway to the vagus nerve. ICA = internal carotid artery; TN = trigeminal nerve; OB = olfactory bulb; VN = vagal nerve.

1995).  $C_{60}$ -fullerenes have also been shown to induce oxidative stress in the brains of largemouth bass (Oberdörster et al. 2004). These findings suggest that NPs can pose a risk for targets sensitive to oxidative stress, like the brain, because of their high iron and lipid content. Thus, carbon-based nanomaterials can pose significant neurological risk following exposure. Indeed, we have observed brain-region-specific mRNA expression of several proinflammatory chemokines, cytokines, selectins, and markers of cellular stress in mice exposed to a single dose of MWCNTs (10–80  $\mu$ g) by pharyngeal aspiration. Furthermore, MWCNTs decreased the expression of certain BBB-related markers suggestive of altered BBB integrity (Sriram et al. 2009, 2007). Further investigation is required to determine if persistent adverse CNS changes could result from chronic exposure to NPs.

#### CONCLUSIONS

Advances in nanotechnology have produced an explosion of new products, including consumer products, medical devices, and engineered pharmaceuticals. The existing nanotoxicology

studies have generally lagged behind the advances in nanotechnology. However, the existing nanotoxicology studies show a general trend for increased toxicity as particulate sizes decrease. The enhanced toxicity is associated with many factors, including increased surface area, ability to pass through cellular barriers, interaction with subcellular structures, and increased ability to activate neutrophils and stimulate the release of inflammatory mediators. Systemic effects of NP exposures are increasingly recognized, particularly in the cardiovascular and neurologic systems. However, enormous opportunities come along with these discoveries and the challenges they present for toxicologic pathologists. Because many NPs are engineered, they can be tools that allow toxicologists and pathologists to explore long-standing hypotheses. Thus, the early fibrosis induced in the lung of SWCNT- and MWCNT-exposed rodents suggests the need to consider new mechanisms for fibrosis. The ability to add labels to NPs presents the opportunity to follow the distribution of some NPs within different tissues and subcellular structures within those tissues. The ability to engineer NPs within specific dimensions allows the detection of critical dimensions for producing interaction with, and

penetration of, cellular structures. Finally, merging advances in molecular pathology with an understanding of nanotechnology allows detection of surprising effects sometimes seen in NP studies, including disruption of mitosis, lymphangiectasia, changes in sensory nerves, and disruption of the blood-brain barrier. Toxicologic pathologists can play an important role in recognizing the hazards of NPs so that health risks are reduced as the opportunities of nanotechnology are realized.

#### ACKNOWLEDGMENT

We thank Richard D. Dey, PhD, for advice on the figures.

#### REFERENCES

- Abbey, D. E., Nishino, N., McDonnell, W. F., Burchette, R. J., Knutsen, S. F., Lawrence Beeson, W., and Yang, J. X. (1999). Long-term inhalable particles and other air pollutants related to mortality in nonsmokers. *Am J Respir Crit Care Med* **159**, 373–82.
- Abbracchio, M. P., Simmons-Hansen, J., and Costa, M. (1982). Cytoplasmic dissolution of phagocytized crystalline nickel sulfide particles: a prerequisite for nuclear uptake of nickel. *J Toxicol Environ Health* **9**, 663–76.
- Adams, G. B., Sankey, O. F., Page, J. B., O'Keeffe, M., and Drabold, D. A. (1992). Energetics of large fullerenes: balls, tubes, and capsules. *Science* **256**, 1792–5.
- Aitken, R. J., Chaudhry, M. Q., Boxall, A. B., and Hull, M. (2006). Manufacture and use of nanomaterials: current status in the UK and global trends. *Occup Med (Lond)* **56**, 300–6.
- Ajayan, P. M., Charlier, J., and Rinzler, A. G. (1999). Carbon nanotubes: from macromolecules to nanotechnology. *Proc Natl Acad Sci U S A* **96**, 14199–200.
- Alessandrini, F., Schulz, H., Takenaka, S., Lentner, B., Karg, E., Behrendt, H., and Jakob, T. (2006). Effects of ultrafine carbon particle inhalation on allergic inflammation of the lung. *J Allergy Clin Immunol* **117**, 824–30.
- Baan, R. A. (2007). Carcinogenic hazards from inhaled carbon black, titanium dioxide, and talc not containing asbestos or asbestiform fibers: recent evaluations by an IARC Monographs Working Group. *Inhal Toxicol* **19** (Suppl. 1), 213–28.
- Bagges, R. B., Ferin, J., and Oberdörster, G. (1997). Regression of pulmonary lesions produced by inhaled titanium dioxide in rats. *Vet Pathol* **34**, 592–7.
- Bang, J. J., Guerrero, P. A., Lopez, D. A., Murr, L. E., and Esquivel, E. V. (2004). Carbon nanotubes and other fullerene nanocrystals in domestic propane and natural gas combustion streams. *J Nanosci Nanotechnol* **4**, 716–8.
- Beck, E. G., Holt, P. F., and Manojlovic, N. (1972). Comparison of effects on macrophage cultures of glass fibre, glass powder, and chrysotile asbestos. *Br J Ind Med* **29**, 280–6.
- Bennat, C., and Muller-Goymann, C. C. (2000). Skin penetration and stabilization of formulations containing microfine titanium dioxide as physical UV filter. *Int J Cosmet Sci* **22**, 271–83.
- Bermudez, E., Mangum, J. B., Asgharian, B., Wong, B. A., Reverdy, E. E., Janszen, D. B., Hext, P. M., Warheit, D. B., and Everitt, J. I. (2002). Long-term pulmonary responses of three laboratory rodent species to subchronic inhalation of pigmentary titanium dioxide particles. *Toxicol Sci* **70**, 86–97.
- Bermudez, E., Mangum, J. B., Wong, B. A., Asgharian, B., Hext, P. M., Warheit, D. B., and Everitt, J. I. (2004). Pulmonary responses of mice, rats, and hamsters to subchronic inhalation of ultrafine titanium dioxide particles. *Toxicol Sci* **77**, 347–57.
- Berube, K., Balharry, D., Sexton, K., Koshy, L., and Jones, T. (2007). Combustion-derived nanoparticles: mechanisms of pulmonary toxicity. *Clin Exp Pharmacol Physiol* **34**, 1044–50.
- Bethune, D. S., Klang, C. H., de Vries, M. S., Gorman, G., Savoy, R., Vazquez, J., and Beyers, R. (1993). Cobalt-catalysed growth of carbon nanotubes with single-atomic-layer walls. *Nature* **363**, 605–7.
- Bhattacharyya, M., and Bradley, H. (2006). Management of a difficult-to-heal chronic wound infected with methicillin-resistant staphylococcus aureus in a patient with psoriasis following a complex knee surgery. *Int J Low Extrem Wounds* **5**, 105–8.
- Bhattacharyya, M., and Bradley, H. (2008). A case report of the use of nanocrystalline silver dressing in the management of acute surgical site wound infected with MRSA to prevent cutaneous necrosis following revision surgery. *Int J Low Extrem Wounds* **7**, 45–8.
- Bonner, J. C. (2007). Lung fibrotic responses to particle exposure. *Toxicol Pathol* **35**, 148–53.
- Bonner, J. C. (2010). Nanoparticles as a potential cause of pleural and interstitial lung disease. *Proc Am Thorac Soc* **7**, 138–41.
- Boverhof, D. R., and David, R. M. (2010). Nanomaterial characterization: considerations and needs for hazard assessment and safety evaluation. *Anal Bioanal Chem* **396**, 953–61.
- Bradley, J., Nordan, M. M., and Tassinari, O. (2009). *The Recession's Ripple Effect on Nanotech*. Lux Research, Inc., Boston, MA.
- Brown, D. M., Wilson, M. R., MacNee, W., Stone, V., and Donaldson, K. (2001). Size-dependent proinflammatory effects of ultrafine polystyrene particles: a role for surface area and oxidative stress in the enhanced activity of ultrafines. *Toxicol Appl Pharmacol* **175**, 191–9.
- Calderón-Garcidueñas, L., Gamblin, T. M., Acuna, H., Garcia, R., Osnaya, N., Monroy, S., Villarreal-Calderon, A., Carson, J., Koren, H. S., and Devlin, R. B. (2001). Canines as sentinel species for assessing chronic exposures to air pollutants: part 2. Cardiac pathology. *Toxicol Sci* **61**, 356–67.
- Calderón-Garcidueñas, L., Solt, A. C., Henriquez-Roldan, C., Torres-Jardon, R., Nuse, B., Herritt, L., Villarreal-Calderon, R., Osnaya, N., Stone, I., Garcia, R., Brooks, D. M., Gonzalez-Maciell, A., Reynoso-Robles, R., Delgado-Chavez, R., and Reed, W. (2008). Long-term air pollution exposure is associated with neuroinflammation, an altered innate immune response, disruption of the blood-brain barrier, ultrafine particulate deposition, and accumulation of amyloid beta-42 and alpha-synuclein in children and young adults. *Toxicol Pathol* **36**, 289–310.
- Cao, X., Wang, N., and Wang, L. (2010). Ultrathin ZnO nanorods: facile synthesis, characterization and optical properties. *Nanotechnology* **21**, 065603.
- Cassee, F. R., Muijsers, H., Duistermaat, E., Freijer, J. J., Geerse, K. B., Marijnissen, J. C., and Arts, J. H. (2002). Particle size-dependent total mass deposition in lungs determines inhalation toxicity of cadmium chloride aerosols in rats. Application of a multiple path dosimetry model. *Arch Toxicol* **76**, 277–86.
- Cheng, C., Muller, K. H., Koziol, K. K., Skepper, J. N., Midgley, P. A., Welland, M. E., and Porter, A. E. (2009). Toxicity and imaging of multi-walled carbon nanotubes in human macrophage cells. *Biomaterials* **30**, 4152–60.
- Churg, A. (1988). Chrysotile, tremolite, and malignant mesothelioma in man. *Chest* **93**, 621–8.
- Cirstoiu-Hapca, A., Buchegger, F., Bossy, L., Kosinski, M., Gurny, R., and Delie, F. (2009). Nanomedicines for active targeting: physico-chemical characterization of paclitaxel-loaded anti-HER2 immunonanoparticles and in vitro functional studies on target cells. *Eur J Pharm Sci* **38**, 230–7.
- Cirstoiu-Hapca, A., Buchegger, F., Lange, N., Bossy, L., Gurny, R., and Delie, F. (2010). Benefit of anti-HER2-coated paclitaxel-loaded immuno-nanoparticles in the treatment of disseminated ovarian cancer: Therapeutic efficacy and biodistribution in mice. *J Control Release* **144**, 324–31.
- Cohen, M. D., Sisco, M., Prophete, C., Chen, L. C., Zelikoff, J. T., Ghio, A. J., Stonehuerner, J. D., Smee, J. J., Holder, A. A., and Crans, D. C. (2007). Pulmonary immunotoxic potentials of metals are governed by select physicochemical properties: vanadium agents. *J Immunotoxicol* **4**, 49–60.
- Cormode, D. P., Skajaa, T., Fayad, Z. A., and Mulder, W. J. (2009). Nanotechnology in medical imaging: probe design and applications. *Arterioscler Thromb Vasc Biol* **29**, 992–1000.
- Costa, M., Davidson, T. L., Chen, H., Ke, Q., Zhang, P., Yan, Y., Huang, C., and Kluz, T. (2005). Nickel carcinogenesis: epigenetics and hypoxia signaling. *Mutat Res* **592**, 79–88.
- Curl, R. F., and Smalley, R. E. (1988). Probing C60. *Science* **242**, 1017–22.

- Dankovic, D., Kuempel, E., and Wheeler, M. (2007). An approach to risk assessment for TiO<sub>2</sub>. *Inhal Toxicol* **19** (Suppl. 1), 205–12.
- De Jong, W. H., and Borm, P. J. (2008). Drug delivery and nanoparticles: applications and hazards. *Int J Nanomedicine* **3**, 133–49.
- De Jong, W. H., Hagens, W. I., Krystek, P., Burger, M. C., Sips, A. J., and Geertsma, R. E. (2008). Particle size-dependent organ distribution of gold nanoparticles after intravenous administration. *Biomaterials* **29**, 1912–9.
- Devika, M., Reddy, N. K., Pevzner, A., and Patolsky, F. (2010). Heteroepitaxial Si/ZnO hierarchical nanostructures for future optoelectronic devices. *Chemphyschem* **11**, 809–14.
- Diaz, J. A., and Cagin, T. (2010). Thermo-mechanical stability and strength of peptide nanostructures from molecular dynamics: self-assembled cyclic peptide nanotubes. *Nanotechnology* **21**, 115703.
- Dinu, C. Z., Bale, S. S., Zhu, G. Y., and Dordick, J. S. (2009). Tubulin encapsulation of carbon nanotubes into functional hybrid assemblies. *Small* **5**, 310–5.
- Doak, S. H., Griffiths, S. M., Manshian, B., Singh, N., Williams, P. M., Brown, A. P., and Jenkins, G. J. (2009). Confounding experimental considerations in nanogenotoxicology. *Mutagenesis* **24**, 285–93.
- Dockery, D. W., Pope, C. A., III, Xu, X., Spengler, J. D., Ware, J. H., Fay, M. E., Ferris, B. G., Jr., and Speizer, F. E. (1993). An association between air pollution and mortality in six U.S. cities. *N Engl J Med* **329**, 1753–9.
- Donaldson, K., Aitken, R., Tran, L., Stone, V., Duffin, R., Forrest, G., and Alexander, A. (2006). Carbon nanotubes: A review of their properties in relation to pulmonary toxicology and workplace safety. *Toxicol Sci* **92**, 5–22.
- Donaldson, K., Beswick, P. H., and Gilmour, P. S. (1996). Free radical activity associated with the surface of particles: a unifying factor in determining biological activity? *Toxicol Lett* **88**, 293–8.
- Donaldson, K., Brown, D., Clouter, A., Duffin, R., MacNee, W., Renwick, L., Tran, L., and Stone, V. (2002). The pulmonary toxicology of ultrafine particles. *J Aerosol Med* **15**, 213–20.
- Donaldson, K., Murphy, F. A., Duffin, R., and Poland, C. A. (2010). Asbestos, carbon nanotubes and the pleural mesothelium: a review of the hypothesis regarding the role of long fibre retention in the parietal pleura, inflammation and mesothelioma. *Part Fibre Toxicol* **7**, 5.
- Duffin, R., Mills, N. L., and Donaldson, K. (2007). Nanoparticles—a thoracic toxicology perspective. *Yonsei Med J* **48**, 561–72.
- Ebbesen, T. W., and Ajayan, P. M. (1992). Large-scale synthesis of carbon nanotubes. *Nature* **358**, 220–2.
- Elder, A., Gelein, R., Silva, V., Feikert, T., Opanashuk, L., Carter, J., Potter, R., Maynard, A., Ito, Y., Finkelstein, J., and Oberdörster, G. (2006). Translocation of inhaled ultrafine manganese oxide particles to the central nervous system. *Environ Health Perspect* **114**, 1172–8.
- Elgrabli, D., Abella-Gallart, S., Robidel, F., Rogerieux, F., Boczkowski, J., and Lacroix, G. (2008). Induction of apoptosis and absence of inflammation in rat lung after intratracheal instillation of multiwalled carbon nanotubes. *Toxicology* **253**, 131–6.
- Erdely, A., Hulderman, T., Salmen, R., Liston, A., Zeidler-Erdely, P. C., Schwegler-Berry, D., Castranova, V., Koyama, S., Kim, Y. A., Endo, M., and Simeonova, P. P. (2009). Cross-talk between lung and systemic circulation during carbon nanotube respiratory exposure. Potential biomarkers. *Nano Lett* **9**, 36–43.
- Falta, M. T., Bowerman, N. A., Dai, S., Kappler, J. W., and Fontenot, A. P. (2010). Linking genetic susceptibility and T cell activation in beryllium-induced disease. *Proc Am Thorac Soc* **7**, 126–9.
- Finch, G. L., Nikula, K. J., and Hoover, M. D. (1998). Dose-response relationships between inhaled beryllium metal and lung toxicity in C3H mice. *Toxicol Sci* **42**, 36–48.
- Fischer, H. C., and Chan, W. C. (2007). Nanotoxicity: the growing need for in vivo study. *Curr Opin Biotechnol* **18**, 565–71.
- Fontenot, A. P., and Amicosante, M. (2008). Metal-induced diffuse lung disease. *Semin Respir Crit Care Med* **29**, 662–9.
- Freiman, D. G., and Hardy, H. L. (1970). Beryllium disease. The relation of pulmonary pathology to clinical course and prognosis based on a study of 130 cases from the U.S. Beryllium Case Registry. *Hum Pathol* **1**, 25–44.
- Gaiser, B. K., Fernandes, T. F., Jepson, M., Lead, J. R., Tyler, C. R., and Stone, V. (2009). Assessing exposure, uptake and toxicity of silver and cerium dioxide nanoparticles from contaminated environments. *Environ Health* **8** (Suppl. 1), S2.
- Gatti, A. M., Tossini, D., Gambarelli, A., Montanari, S., and Capitani, F. (2009). Investigation of the presence of inorganic micro- and nanosized contaminants in bread and biscuits by environmental scanning electron microscopy. *Crit Rev Food Sci Nutr* **49**, 275–82.
- Gonzalez, O., Smith, R. L., and Goodman, S. B. (1996). Effect of size, concentration, surface area, and volume of polymethylmethacrylate particles on human macrophages in vitro. *J Biomed Mater Res* **30**, 463–73.
- Gopee, N. V., Roberts, D. W., Webb, P., Cozart, C. R., Siitonen, P. H., Latendresse, J. R., Warbitton, A. R., Yu, W. W., Colvin, V. L., Walker, N. J., and Howard, P. C. (2009). Quantitative determination of skin penetration of PEG-coated CdSe quantum dots in dermabrased but not intact SKH-1 hairless mouse skin. *Toxicol Sci* **111**, 37–48.
- Haas, A., and Fischer, M. S. (1997). Three-dimensional reconstruction of histological sections using modern product-design software. *Anat Rec* **249**, 510–6.
- Han, J. H., Lee, E. J., Lee, J. H., So, K. P., Lee, Y. H., Bae, G. N., Lee, S. B., Ji, J. H., Cho, M. H., and Yu, I. J. (2008). Monitoring multiwalled carbon nanotube exposure in carbon nanotube research facility. *Inhal Toxicol* **20**, 741–9.
- Harmsen, A. G., Mason, M. J., Muggenburg, B. A., Gillett, N. A., Jarpe, M. A., and Bice, D. E. (1987). Migration of neutrophils from lung to tracheobronchial lymph node. *J Leukoc Biol* **41**, 95–103.
- Harmsen, A. G., Muggenburg, B. A., Snipes, M. B., and Bice, D. E. (1985). The role of macrophages in particle translocation from lungs to lymph nodes. *Science* **230**, 1277–80.
- Hoet, P., Legiest, B., Geys, J., and Nemery, B. (2009). Do nanomedicines require novel safety assessments to ensure their safety for long-term human use? *Drug Saf* **32**, 625–36.
- Hubbs, A., Greskevitch, M., Kuempel, E., Suarez, F., and Toraason, M. (2005). Abrasive blasting agents: designing studies to evaluate relative risk. *J Toxicol Environ Health A* **68**, 999–1016.
- Hubbs, A. F., Mercer, R. R., Coad, J. E., Battelli, L. A., Willard, P., Sriram, K., Wolfarth, M., Castranova, V., and Porter, D. (2009). Persistent pulmonary inflammation, airway mucous metaplasia and migration of multi-walled carbon nanotubes from the lung after subchronic exposure. *Toxicol Sci* **108**, 457.
- Hubbs, A. F., Mercer, R. R., Sriram, K., Castranova, V., Chen, B. T., McKinney, W., Frazer, D. G., Battelli, L. A., Willard, P., Scabilloni, J., Schwegler-Berry, D., and Porter, D. (2008). Acute respiratory toxicologic pathology of inhaled multi-walled carbon nanotubes. *Vet Pathol* **45**, 786.
- Hunter, D. D., and Dey, R. D. (1998). Identification and neuropeptide content of trigeminal neurons innervating the rat nasal epithelium. *Neuroscience* **83**, 591–9.
- Hunter, D. D., Satterfield, B. E., Huang, J., Fedan, J. S., and Dey, R. D. (2000). Toluene diisocyanate enhances substance P in sensory neurons innervating the nasal mucosa. *Am J Respir Crit Care Med* **161**, 543–9.
- Hunter, D. D., and Undem, B. J. (1999). Identification and substance P content of vagal afferent neurons innervating the epithelium of the guinea pig trachea. *Am J Respir Crit Care Med* **159**, 1943–8.
- Iijima, S. (1991). Helical microtubules of graphitic carbon. *Nature* **354**, 56–8.
- Iijima, S., and Ichihashi, T. (1993). Single-shell carbon nanotubes of 1-nm diameter. *Nature* **363**, 603–5.
- ISO (2008). *Nanotechnologies—Terminology and Definitions for Nano-Objects—Nanoparticle, Nanofibre and Nanoplate*, ISO/TS 27687, p. 7. The International Organization for Standardization, Geneva, Switzerland.
- Jaurand, M. C., Renier, A., and Daubriac, J. (2009). Mesothelioma: do asbestos and carbon nanotubes pose the same health risk? *Part Fibre Toxicol* **6**, 16.
- Jensen, C. G., and Watson, M. (1999). Inhibition of cytokinesis by asbestos and synthetic fibres. *Cell Biol Int* **23**, 829–40.



- Ji, J. H., Jung, J. H., Kim, S. S., Yoon, J. U., Park, J. D., Choi, B. S., Chung, Y. H., Kwon, I. H., Jeong, J., Han, B. S., Shin, J. H., Sung, J. H., Song, K. S., and Yu, I. J. (2007). Twenty-eight-day inhalation toxicity study of silver nanoparticles in Sprague-Dawley rats. *Inhal Toxicol* **19**, 857–71.
- Jin, H., Heller, D. A., Sharma, R., and Strano, M. S. (2009). Size-dependent cellular uptake and expulsion of single-walled carbon nanotubes: single particle tracking and a generic uptake model for nanoparticles. *ACS Nano* **3**, 149–58.
- Johnson, D. R., Methner, M. M., Kennedy, A. J., and Steevens, J. A. (2010). Potential for occupational exposure to engineered carbon-based nanomaterials in environmental laboratory studies. *Environ Health Perspect* **118**, 49–54.
- Johnson, L. A., Clasper, S., Holt, A. P., Lalor, P. F., Baban, D., and Jackson, D. G. (2006). An inflammation-induced mechanism for leukocyte transmigration across lymphatic vessel endothelium. *J Exp Med* **203**, 2763–77.
- Johnson, L. A., and Jackson, D. G. (2008). Cell traffic and the lymphatic endothelium. *Ann N Y Acad Sci* **1131**, 119–33.
- Johnston, H. J., Hutchison, G., Christensen, F. M., Peters, S., Hankin, S., and Stone, V. (2010). A review of the in vivo and in vitro toxicity of silver and gold particulates: particle attributes and biological mechanisms responsible for the observed toxicity. *Crit Rev Toxicol* **40**, 328–46.
- Kalishwaralal, K., Banumathi, E., Ram Kumar Pandian, S., Deepak, V., Muniyandi, J., Eom, S. H., and Gurunathan, S. (2009). Silver nanoparticles inhibit VEGF induced cell proliferation and migration in bovine retinal endothelial cells. *Colloids Surf B Biointerfaces* **73**, 51–7.
- Kamp, D. W., Graceffa, P., Pryor, W. A., and Weitzman, S. A. (1992). The role of free radicals in asbestos-induced diseases. *Free Radic Biol Med* **12**, 293–315.
- Kateb, B., Chiu, K., Black, K. L., Yamamoto, V., Khalsa, B., Ljubimova, J. Y., Ding, H., Patil, R., Portilla-Arias, J. A., Modo, M., Moore, D. F., Farahani, K., Okun, M. S., Prakash, N., Neman, J., Ahdoot, D., Grundfest, W., Nikzad, S., and Heiss, J. D. (forthcoming). Nanoplatforams for constructing new approaches to cancer treatment, imaging, and drug delivery: what should be the policy? *Neuroimage*, doi:10.1016/j.neuroimage.2010.01.105.
- Kim, J. S., Yoon, T. J., Yu, K. N., Kim, B. G., Park, S. J., Kim, H. W., Lee, K. H., Park, S. B., Lee, J. K., and Cho, M. H. (2006). Toxicity and tissue distribution of magnetic nanoparticles in mice. *Toxicol Sci* **89**, 338–47.
- Kim, W. Y., Choi, Y. C., Min, S. K., Cho, Y., and Kim, K. S. (2009). Application of quantum chemistry to nanotechnology: electron and spin transport in molecular devices. *Chem Soc Rev* **38**, 2319–33.
- Kim, W. Y., Kim, J., Park, J. D., Ryu, H. Y., and Yu, I. J. (2009). Histological study of gender differences in accumulation of silver nanoparticles in kidneys of Fischer 344 rats. *J Toxicol Environ Health A* **72**, 1279–84.
- Kim, Y. S., Kim, J. S., Cho, H. S., Rha, D. S., Kim, J. M., Park, J. D., Choi, B. S., Lim, R., Chang, H. K., Chung, Y. H., Kwon, I. H., Jeong, J., Han, B. S., and Yu, I. J. (2008). Twenty-eight-day oral toxicity, genotoxicity, and gender-related tissue distribution of silver nanoparticles in Sprague-Dawley rats. *Inhal Toxicol* **20**, 575–83.
- Kisin, E. R., Murray, A. R., Keane, M. J., Shi, X. C., Schwegler-Berry, D., Gorelik, O., Arepalli, S., Castranova, V., Wallace, W. E., Kagan, V. E., and Shvedova, A. A. (2007). Single-walled carbon nanotubes: Genotoxic and cytotoxic effects in lung fibroblast V79 cells. *Journal of Toxicology and Environmental Health—Part A—Current Issues* **70**, 2071–9.
- Konduru, N. V., Tyurina, Y. Y., Feng, W., Basova, L. V., Belikova, N. A., Bayir, H., Clark, K., Rubin, M., Stolz, D., Vallhov, H., Scheynius, A., Witas, E., Fadeel, B., Kichambare, P. D., Star, A., Kisin, E. R., Murray, A. R., Shvedova, A. A., and Kagan, V. E. (2009). Phosphatidylserine targets single-walled carbon nanotubes to professional phagocytes in vitro and in vivo. *PLoS One* **4**, e4398.
- Koppinen, P. J., Lievonon, J. T., Ahlskog, M., and Maasilta, I. J. (2010). Strain sensing with submicron Al-AIO(x)-Al tunnel junctions. *Rev Sci Instrum* **81**, 023901.
- Kreyling, W. G., Semmler, M., Erbe, F., Mayer, P., Takenaka, S., Schulz, H., Oberdörster, G., and Ziesenis, A. (2002). Translocation of ultrafine insoluble iridium particles from lung epithelium to extrapulmonary organs is size dependent but very low. *Journal of Toxicology and Environmental Health, Part A* **65**, 1513–30.
- Kroto, H. (1988). Space, stars, C60, and soot. *Science* **242**, 1139–45.
- Kroto, H. W., Heath, J. R., O'Brien, S. C., Curl, R. F., and Smalley, R. E. (1985). C60: buckminsterfullerene. *Nature* **318**, 162–3.
- Kwon, J. T., Hwang, S. K., Jin, H., Kim, D. S., Minai-Tehrani, A., Yoon, H. J., Choi, M., Yoon, T. J., Han, D. Y., Kang, Y. W., Yoon, B. I., Lee, J. K., and Cho, M. H. (2008). Body distribution of inhaled fluorescent magnetic nanoparticles in the mice. *J Occup Health* **50**, 1–6.
- Lam, C. W., James, J. T., McCluskey, R., Arepalli, S., and Hunter, R. L. (2006). A review of carbon nanotube toxicity and assessment of potential occupational and environmental health risks. *Crit Rev Toxicol* **36**, 189–217.
- Lam, C. W., James, J. T., McCluskey, R., and Hunter, R. L. (2004). Pulmonary toxicity of single-wall carbon nanotubes in mice 7 and 90 days after intratracheal instillation. *Toxicol Sci* **77**, 126–34.
- Landsiedel, R., Kapp, M. D., Schulz, M., Wiench, K., and Oesch, F. (2009). Genotoxicity investigations on nanomaterials: methods, preparation and characterization of test material, potential artifacts and limitations—many questions, some answers. *Mutat Res* **681**, 241–58.
- Larsen, S. T., Roursgaard, M., Jensen, K. A., and Nielsen, G. D. (2010). Nano titanium dioxide particles promote allergic sensitization and lung inflammation in mice. *Basic Clin Pharmacol Toxicol* **106**, 114–7.
- Lasagna-Reeves, C., Gonzalez-Romero, D., Barria, M. A., Olmedo, I., Clos, A., Sadagopa Ramanujam, V. M., Urayama, A., Vergara, L., Kogan, M. J., and Soto, C. (2010). Bioaccumulation and toxicity of gold nanoparticles after repeated administration in mice. *Biochem Biophys Res Commun* **393**, 649–55.
- LeBlanc, A. J., Cumpston, J. L., Chen, B. T., Frazer, D., Castranova, V., and Nurkiewicz, T. R. (2009). Nanoparticle inhalation impairs endothelium-dependent vasodilation in subepicardial arterioles. *J Toxicol Environ Health A* **72**, 1576–84.
- LeBlanc, A. J., Moseley, A. M., Chen, B. T., Frazer, D., Castranova, V., and Nurkiewicz, T. R. (2010). Nanoparticle inhalation impairs coronary microvascular reactivity via a local reactive oxygen species-dependent mechanism. *Cardiovasc Toxicol* **10**, 27–36.
- Lee, C. M., Jeong, H. J., Cheong, S. J., Kim, E. M., Kim, D. W., Lim, S. T., and Sohn, M. H. (2010). Prostate cancer-targeted imaging using magnetofluorescent polymeric nanoparticles functionalized with bombesin. *Pharm Res* **27**, 712–21.
- Li, X., Peng, Y., and Qu, X. (2006). Carbon nanotubes selective destabilization of duplex and triplex DNA and inducing B-A transition in solution. *Nucleic Acids Res* **34**, 3670–6.
- Li, Z., Hulderman, T., Salmen, R., Chapman, R., Leonard, S. S., Young, S. H., Shvedova, A., Luster, M. I., and Simeonova, P. P. (2007). Cardiovascular effects of pulmonary exposure to single-wall carbon nanotubes. *Environ Health Perspect* **115**, 377–82.
- Lindberg, H. K., Falck, G. C., Suhonen, S., Vippola, M., Vanhala, E., Catalan, J., Savolainen, K., and Norppa, H. (2009). Genotoxicity of nanomaterials: DNA damage and micronuclei induced by carbon nanotubes and graphite nanofibres in human bronchial epithelial cells in vitro. *Toxicol Lett* **186**, 166–73.
- Linkov, I., Satterstrom, F. K., and Corey, L. M. (2008). Nanotoxicology and nanomedicine: making hard decisions. *Nanomedicine* **4**, 167–71.
- Lison, D., Lardot, C., Huaux, F., Zanetti, G., and Fubini, B. (1997). Influence of particle surface area on the toxicity of insoluble manganese dioxide dusts. *Arch Toxicol* **71**, 725–9.
- Lison, D., and Muller, J. (2008). To the editor. *Toxicol Sci* **101**, 179–80.
- Lockman, P. R., Koziara, J. M., Mumper, R. J., and Allen, D. D. (2004). Nanoparticle surface charges alter blood-brain barrier integrity and permeability. *J Drug Target* **12**, 635–41.
- Lomer, M. C., Thompson, R. P., and Powell, J. J. (2002). Fine and ultrafine particles of the diet: influence on the mucosal immune response and association with Crohn's disease. *Proc Nutr Soc* **61**, 123–30.
- Long, C., Saleh, N., Tilton, R. D., Lowry, G. V., and Veronesi, B. (2006). Titanium dioxide (P25) produces reactive oxygen species in

- immortalized brain microglia (BV2): implications for nanoparticle neurotoxicity. *Environ Sci Technol* **40**, 4346–52.
- Lu, J. P. (1997). Elastic properties of carbon nanotubes and nanoropes. *Physical Review Letters* **79**, 1297–300.
- Mangum, J. B., Turpin, E. A., Antao-Menezes, A., Cesta, M. F., Bermudez, E., and Bonner, J. C. (2006). Single-walled carbon nanotube (SWCNT)-induced interstitial fibrosis in the lungs of rats is associated with increased levels of PDGF mRNA and the formation of unique intercellular carbon structures that bridge alveolar macrophages in situ. *Part Fibre Toxicol* **3**, 15.
- Maynard, A. D., and Aitken, R. J. (2007). Assessing exposure to airborne nanomaterials: current abilities and future requirements. *Nanotoxicology* **1**, 26–41.
- Maynard, A. D., Baron, P. A., Foley, M., Shvedova, A. A., Kisin, E. R., and Castranova, V. (2004). Exposure to carbon nanotube material: aerosol release during the handling of unrefined single-walled carbon nanotube material. *J Toxicol Environ Health A* **67**, 87–107.
- Maynard, A. D., and Kuempel, E. D. (2005). Airborne nanostructured particles and occupational health. *J Nanoparticle Res* **7**, 587–614.
- McCleskey, T. M., Buchner, V., Field, R. W., and Scott, B. L. (2009). Recent advances in understanding the biomolecular basis of chronic beryllium disease: a review. *Rev Environ Health* **24**, 75–115.
- McDonald, J., and Mitchell, L. (2008). To the editor. *Toxicol Sci* **101**, 181–2.
- Mercer, R. R., Hubbs, A. F., Scabilloni, J. F., Wang, L., Castranova, V., and Porter, D. (2010). Distribution and persistence of pleural penetrations by multi-walled carbon nanotubes. *Am J Respir Crit Care Med* **181**, A3102.
- Mercer, R. R., Russell, M. L., and Crapo, J. D. (1994). Alveolar septal structure in different species. *J Appl Physiol* **77**, 1060–6.
- Mercer, R. R., Scabilloni, J., Wang, L., Kisin, E., Murray, A. R., Schwegler-Berry, D., Shvedova, A. A., and Castranova, V. (2008). Alteration of deposition pattern and pulmonary response as a result of improved dispersion of aspirated single-walled carbon nanotubes in a mouse model. *Am J Physiol Lung Cell Mol Physiol* **294**, L87–97.
- Mercer, R. R., Scabilloni, J. F., Wang, L., Battelli, L. A., and Castranova, V. (2009). Use of labeled single wall carbon nanotubes to study translocation from the lungs. *The Toxicologist* **108**, A2192.
- Methner, M., Hodson, L., Dames, A., and Geraci, C. (2010). Nanoparticle emission assessment technique (NEAT) for the identification and measurement of potential inhalation exposure to engineered nanomaterials—Part B: results from 12 field studies. *J Occup Environ Hyg* **7**, 163–76.
- Methner, M., Hodson, L., and Geraci, C. (2010). Nanoparticle emission assessment technique (NEAT) for the identification and measurement of potential inhalation exposure to engineered nanomaterials—Part A. *J Occup Environ Hyg* **7**, 127–32.
- Miller, B. E., Dethloff, L. A., Gladen, B. C., and Hook, G. E. (1987). Progression of type II cell hypertrophy and hyperplasia during silica-induced pulmonary inflammation. *Lab Invest* **57**, 546–54.
- Miller, B. E., Dethloff, L. A., and Hook, G. E. (1986). Silica-induced hypertrophy of type II cells in the lungs of rats. *Lab Invest* **55**, 153–63.
- Miller, B. E., and Hook, G. E. (1990). Hypertrophy and hyperplasia of alveolar type II cells in response to silica and other pulmonary toxicants. *Environ Health Perspect* **85**, 15–23.
- Mitchell, L. A., Gao, J., Wal, R. V., Gigliotti, A., Burchiel, S. W., and McDonald, J. D. (2007). Pulmonary and systemic immune response to inhaled multiwalled carbon nanotubes. *Toxicol Sci* **100**, 203–14.
- Monteiller, C., Tran, L., MacNee, W., Faux, S., Jones, A., Miller, B., and Donaldson, K. (2007). The pro-inflammatory effects of low-toxicity low-solubility particles, nanoparticles and fine particles, on epithelial cells in vitro: the role of surface area. *Occup Environ Med* **64**, 609–15.
- Muhle, H., Kittel, B., Ernst, H., Mohr, U., and Mermelstein, R. (1995). Neoplastic lung lesions in rat after chronic exposure to crystalline silica. *Scand J Work Environ Health* **21** (Suppl. 2), 27–9.
- Muller, J., Decordier, I., Hoet, P. H., Lombaert, N., Thomassen, L., Huaux, F., Lison, D., and Kirsch-Volders, M. (2008). Clastogenic and aneugenic effects of multi-wall carbon nanotubes in epithelial cells. *Carcinogenesis* **29**, 427–33.
- Muller, J., Delos, M., Panin, N., Rabolli, V., Huaux, F., and Lison, D. (2009). Absence of carcinogenic response to multiwall carbon nanotubes in a 2-year bioassay in the peritoneal cavity of the rat. *Toxicol Sci* **110**, 442–8.
- Muller, J., Huaux, F. O., Fonseca, A., Nagy, J. B., Moreau, N., Delos, M., Raymundo-Pinifero, E., Beilguin, F. O., Kirsch-Volders, M., Fenoglio, I., Fubini, B., and Lison, D. (2008). Structural defects play a major role in the acute lung toxicity of multiwall carbon nanotubes: toxicological aspects. *Chemical Research in Toxicology* **21**, 1698–705.
- Muller, J., Huaux, F., Moreau, N., Misson, P., Heilier, J. F., Delos, M., Arras, M., Fonseca, A., Nagy, J. B., and Lison, D. (2005). Respiratory toxicity of multi-wall carbon nanotubes. *Toxicol Appl Pharmacol* **207**, 221–31.
- Murai, Y., Kitagawa, M., Matsui, K., Koizumi, F., and Miwa, A. (1995). Asbestos fiber analysis in nine lung cancer cases with high asbestos exposure. *Arch Environ Health* **50**, 320–5.
- Murashov, V. (2009). Occupational exposure to nanomedical applications. *Wiley Interdiscip Rev Nanomed Nanobiotechnol* **1**, 203–13.
- Murashov, V., Engel, S., Savolainen, K., Fullam, B., Lee, M., and Kearns, P. (2009). Occupational safety and health in nanotechnology and Organisation for Economic Cooperation and Development. *J Nanopart Res* **11**, 1587–91.
- Murr, L. E. (2008). Microstructures and nanostructures for environmental carbon nanotubes and nanoparticulate soots. *Int J Environ Res Public Health* **5**, 321–36.
- National Research Council (2006). *A matter of size: triennial review of the National Nanotechnology Initiative*. National Academies Press, Washington, DC.
- Nemmar, A., Hoet, P. H. M., Vanquickenborne, B., Dinsdale, D., Thomeer, M., Hoylaerts, M. F., Vanbilloen, H., Mortelmans, L., and Nemery, B. (2002). Passage of inhaled particles into the blood circulation in humans. *Circulation* **105**, 411–4.
- Nemmar, A., Vanbilloen, H., Hoylaerts, M. F., Hoet, P. H., Verbruggen, A., and Nemery, B. (2001). Passage of intratracheally instilled ultrafine particles from the lung into the systemic circulation in hamster. *Am J Respir Crit Care Med* **164**, 1665–8.
- Nestle, F. O., Di Meglio, P., Qin, J. Z., and Nickoloff, B. J. (2009). Skin immune sentinels in health and disease. *Nat Rev Immunol* **9**, 679–91.
- Nielsen, G. D., Roursgaard, M., Jensen, K. A., Poulsen, S. S., and Larsen, S. T. (2008). In vivo biology and toxicology of fullerenes and their derivatives. *Basic Clin Pharmacol Toxicol* **103**, 197–208.
- Niidade, Y., Nishioka, K., Kawasaki, H., and Yamada, S. (2003). Rapid synthesis of gold nanorods by the combination of chemical reduction and photoirradiation processes; morphological changes depending on the growing processes. *Chem Commun (Camb)*, 2376–7.
- Nikula, K. J. (2000). Rat lung tumors induced by exposure to selected poorly soluble nonfibrous particles. *Inhal Toxicol* **12**, 97–119.
- Nikula, K. J., Swafford, D. S., Hoover, M. D., Tohulka, M. D., and Finch, G. L. (1997). Chronic granulomatous pneumonia and lymphocytic responses induced by inhaled beryllium metal in A/J and C3H/HeJ mice. *Toxicol Pathol* **25**, 2–12.
- NIOSH (2009). *Approaches to Safe Nanotechnology: Managing the Health and Safety Concerns Associated with Engineered Nanomaterials*, pp. 1–104. Department of Health and Human Services, Washington, DC.
- Nohynek, G. J., Antignac, E., Re, T., and Toutain, H. (2010). Safety assessment of personal care products/cosmetics and their ingredients. *Toxicol Appl Pharmacol* **243**, 239–59.
- Nurkiewicz, T. R., Donlin, M., Hubbs, A., Goodwill, A., Frisbee, J., Chen, B., Frazer, D., and Castranova, V. (2009). Mechanistic links between the lung and the systemic microcirculation after nanoparticle exposure. *The Toxicologist* **108**, A1353.
- Nurkiewicz, T. R., Porter, D. W., Barger, M., Millecchia, L., Rao, K. M., Marvar, P. J., Hubbs, A. F., Castranova, V., and Boegehold, M. A. (2006). Systemic microvascular dysfunction and inflammation after pulmonary particulate matter exposure. *Environ Health Perspect* **114**, 412–9.
- Nurkiewicz, T. R., Porter, D. W., Hubbs, A. F., Cumpston, J. L., Chen, B. T., Frazer, D. G., and Castranova, V. (2008). Nanoparticle inhalation

- augments particle-dependent systemic microvascular dysfunction. *Part Fibre Toxicol* **5**, 1.
- Oberdörster, G. (1996). Significance of particle parameters in the evaluation of exposure-dose-response relationships of inhaled particles. *Inhal Toxicol* **8** (Suppl.), 73–89.
- Oberdörster, G. (2002). Toxicokinetics and effects of fibrous and nonfibrous particles. *Inhal Toxicol* **14**, 29–56.
- Oberdörster, G. (2010). Safety assessment for nanotechnology and nanomedicine: concepts of nanotoxicology. *J Intern Med* **267**, 89–105.
- Oberdörster, G., Ferin, J., and Lehnert, B. E. (1994). Correlation between particle size, in vivo particle persistence, and lung injury. *Environ Health Perspect* **102** (Suppl. 5), 173–9.
- Oberdörster, G., Finkelstein, J. N., Johnston, C., Gelein, R., Cox, C., Baggs, R., and Elder, A. C. (2000). Acute pulmonary effects of ultrafine particles in rats and mice. *Res Rep Health Eff Inst*, 5–74; discussion 75–86.
- Oberdörster, G., Maynard, A., Donaldson, K., Castranova, V., Fitzpatrick, J., Ausman, K., Carter, J., Karn, B., Kreyling, W., Lai, D., Olin, S., Monteiro-Riviere, N., Warheit, D., and Yang, H. (2005). Principles for characterizing the potential human health effects from exposure to nanomaterials: elements of a screening strategy. *Part Fibre Toxicol* **2**, 8.
- Oberdörster, G., Oberdörster, E., and Oberdörster, J. (2005). Nanotoxicology: an emerging discipline evolving from studies of ultrafine particles. *Environ Health Perspect* **113**, 823–39.
- Oberdörster, G., Sharp, Z., Atudorei, V., Elder, A., Gelein, R., Kreyling, W., and Cox, C. (2004). Translocation of inhaled ultrafine particles to the brain. *Inhalation Toxicology* **16**, 437–45.
- Oberdörster, G., Sharp, Z., Atudorei, V., Elder, A., Gelein, R., Lunts, A., Kreyling, W., and Cox, C. (2002). Extrapulmonary translocation of ultrafine carbon particles following whole-body inhalation exposure of rats. *J Toxicol Environ Health A* **65**, 1531–43.
- Oberdörster, G., Stone, V., and Donaldson, K. (2007). Toxicology of nanoparticles: A historical perspective. *Nanotoxicology* **1**, 2–25.
- OSHA (2006). 29 CFR—Occupational Safety and Health Regulations (OSHA Standards). In *Toxic and Hazardous Substances*, Vol. Standards—29 CFR. Occupational Safety and Health Administration, Washington, DC. [http://www.osha.gov/pls/oshaweb/owadisp.show\\_document?p\\_table=STANDARDS&p\\_id=9992](http://www.osha.gov/pls/oshaweb/owadisp.show_document?p_table=STANDARDS&p_id=9992)
- Pacurari, M., Castranova, V., and Vallyathan, V. (2010). Single- and multi-wall carbon nanotubes versus asbestos: are the carbon nanotubes a new health risk to humans? *J Toxicol Environ Health A* **73**, 378–95.
- Pampaloni, F., and Florin, E. L. (2008). Microtubule architecture: inspiration for novel carbon nanotube-based biomimetic materials. *Trends Biotechnol* **26**, 302–10.
- Park, E. J., Yi, J., Kim, Y., Choi, K., and Park, K. (2010). Silver nanoparticles induce cytotoxicity by a Trojan-horse type mechanism. *Toxicol In Vitro* **24**, 872–8.
- Partha, R., and Conyers, J. L. (2009). Biomedical applications of functionalized fullerene-based nanomaterials. *Int J Nanomedicine* **4**, 261–75.
- Paulose, M., Varghese, O. K., and Grimes, C. A. (2003). Synthesis of gold-silica composite nanowires through solid-liquid-solid phase growth. *J Nanosci Nanotechnol* **3**, 341–6.
- Pauluhn, J. (2010). Subchronic 13-week inhalation exposure of rats to multiwalled carbon nanotubes: toxic effects are determined by density of agglomerate structures, not fibrillar structures. *Toxicol Sci* **113**, 226–42.
- Pope, C. A., III, Thun, M. J., Namboodiri, M. M., Dockery, D. W., Evans, J. S., Speizer, F. E., and Heath, C. W., Jr. (1995). Particulate air pollution as a predictor of mortality in a prospective study of U.S. adults. *Am J Respir Crit Care Med* **151**, 669–74.
- Porter, A. E., Gass, M., Bendall, J. S., Muller, K., Goode, A., Skepper, J. N., Midgley, P. A., and Welland, M. (2009). Uptake of noncytotoxic acid-treated single-walled carbon nanotubes into the cytoplasm of human macrophage cells. *ACS Nano* **3**, 1485–92.
- Porter, A. E., Gass, M., Muller, K., Skepper, J. N., Midgley, P. A., and Welland, M. (2007). Direct imaging of single-walled carbon nanotubes in cells. *Nat Nanotechnol* **2**, 713–7.
- Porter, D. W., Holian, A., Sriram, K., Wu, N., Wolfarth, M., Hamilton, R. F., and Buford, M. (2008). Engineered titanium dioxide nanowire toxicity in vitro and in vivo (abstract). *The Toxicologist* **102**, A1492.
- Porter, D. W., Hubbs, A. F., Baron, P. A., Millecchia, L. L., Wolfarth, M. G., Battelli, L. A., Schwegler-Berry, D. E., Beighley, C. M., Andrew, M. E., and Castranova, V. (2007). Pulmonary toxicity of Expancel microspheres in the rat. *Toxicol Pathol* **35**, 702–14.
- Porter, D. W., Hubbs, A. F., Mercer, R., Robinson, V. A., Ramsey, D., McLaurin, J., Khan, A., Battelli, L., Brumbaugh, K., Teass, A., and Castranova, V. (2004). Progression of lung inflammation and damage in rats after cessation of silica inhalation. *Toxicol Sci* **79**, 370–80.
- Porter, D. W., Hubbs, A. F., Mercer, R. R., Wu, N., Wolfarth, M. G., Sriram, K., Leonard, S., Battelli, L., Schwegler-Berry, D., Friend, S., Andrew, M., Chen, B. T., Tsuruoka, S., Endo, M., and Castranova, V. (2010). Mouse pulmonary dose- and time course-responses induced by exposure to multi-walled carbon nanotubes. *Toxicology* **269**, 136–47.
- Porter, D. W., Ramsey, D., Hubbs, A. F., Battelli, L., Ma, J., Barger, M., Landsittel, D., Robinson, V. A., McLaurin, J., Khan, A., Jones, W., Teass, A., and Castranova, V. (2001). Time course of pulmonary response of rats to inhalation of crystalline silica: histological results and biochemical indices of damage, lipidosis, and fibrosis. *J Environ Pathol Toxicol Oncol* **20** (Suppl. 1), 1–14.
- Porter, D. W., Wolfarth, M. G., Chen, B. T., McKinney, W., Hubbs, A. F., Battelli, L., Andrew, A., Frazier, D. G., and Castranova, V. (2009). Pulmonary toxicity of inhaled multi-walled carbon nanotubes. *The Toxicologist* **108**, 457.
- Poteracki, J., and Walsh, K. M. (1998). Spontaneous neoplasms in control Wistar rats: a comparison of reviews. *Toxicol Sci* **45**, 1–8.
- Powers, C. M., Wrench, N., Ryde, I. T., Smith, A. M., Seidler, F. J., and Slotkin, T. A. (2010). Silver impairs neurodevelopment: studies in PC12 cells. *Environ Health Perspect* **118**, 73–9.
- Rahman, M. F., Wang, J., Patterson, T. A., Saini, U. T., Robinson, B. L., Newport, G. D., Murdock, R. C., Schlager, J. J., Hussain, S. M., and Ali, S. F. (2009). Expression of genes related to oxidative stress in the mouse brain after exposure to silver-25 nanoparticles. *Toxicol Lett* **187**, 15–21.
- Renwick, L. C., Brown, D., Clouter, A., and Donaldson, K. (2004). Increased inflammation and altered macrophage chemotactic responses caused by two ultrafine particle types. *Occup Environ Med* **61**, 442–7.
- Roberts, J. R., Schwegler-Berry, D., Chapman, R., Antonini, J. M., Scabilloni, J. F., Castranova, V., and Mercer, R. R. (2009). Biodistribution of quantum dots after pulmonary exposure in rats. *The Toxicologist* **108**, A240.
- Roller, M. (2009). Carcinogenicity of inhaled nanoparticles. *Inhal Toxicol* **21** (Suppl. 1), 144–57.
- Rosas-Hernandez, H., Jimenez-Badillo, S., Martinez-Cuevas, P. P., Gracia-Espino, E., Terrones, H., Terrones, M., Hussain, S. M., Ali, S. F., and Gonzalez, C. (2009). Effects of 45-nm silver nanoparticles on coronary endothelial cells and isolated rat aortic rings. *Toxicol Lett* **191**, 305–13.
- Ryman-Rasmussen, J. P., Cesta, M. F., Brody, A. R., Shipley-Phillips, J. K., Everitt, J. I., Tewksbury, E. W., Moss, O. R., Wong, B. A., Dodd, D. E., Andersen, M. E., and Bonner, J. C. (2009). Inhaled carbon nanotubes reach the subpleural tissue in mice. *Nat Nanotechnol* **4**, 747–51.
- Sadrieh, N., Wokovich, A. M., Gopee, N. V., Zheng, J., Haines, D., Parmiter, D., Siitonen, P. H., Cozart, C. R., Patri, A. K., McNeil, S. E., Howard, P. C., Doub, W. H., and Buhse, L. F. (2010). Lack of significant dermal penetration of titanium dioxide from sunscreen formulations containing nano- and submicron-size TiO<sub>2</sub> particles. *Toxicol Sci* **115**, 156–66.
- Sager, T. M., and Castranova, V. (2009). Surface area of particle administered versus mass in determining the pulmonary toxicity of ultrafine and fine carbon black: comparison to ultrafine titanium dioxide. *Part Fibre Toxicol* **6**, 15.
- Sager, T. M., Kommineni, C., and Castranova, V. (2008). Pulmonary response to intratracheal instillation of ultrafine versus fine titanium dioxide: role of particle surface area. *Part Fibre Toxicol* **5**, 17.
- Sager, T. M., Porter, D. W., Robinson, V. A., Lindsley, W. G., Schwegler-Berry, D. E., and Castranova, V. (2007). Improved method to disperse



- nanoparticles for *in vitro* and *in vivo* investigation of toxicity. *Nanotoxicology* **1**, 118–29.
- Sakamoto, Y., Nakae, D., Fukumori, N., Tayama, K., Maekawa, A., Imai, K., Hirose, A., Nishimura, T., Ohashi, N., and Ogata, A. (2009). Induction of mesothelioma by a single intrascrotal administration of multi-wall carbon nanotube in intact male Fischer 344 rats. *J Toxicol Sci* **34**, 65–76.
- Samet, J. M., Dominici, F., Curriero, F. C., Coursac, I., and Zeger, S. L. (2000). Fine particulate air pollution and mortality in 20 U.S. cities, 1987–1994. *N Engl J Med* **343**, 1742–9.
- Sargent, L. M., Shvedova, A. A., Hubbs, A. F., Salisbury, J. L., Benkovic, S. A., Kashon, M. L., Lowry, D. T., Murray, A. R., Kisin, E. R., Friend, S., McKinstry, K. T., Battelli, L., and Reynolds, S. H. (2009). Induction of aneuploidy by single-walled carbon nanotubes. *Environ Mol Mutagen* **50**, 708–17.
- Sayes, C. M., and Warheit, D. B. (2009). Characterization of nanomaterials for toxicity assessment. *Wiley Interdiscip Rev Nanomed Nanobiotechnol* **1**, 660–70.
- SCENIHR, S. C. o. E. a. N. I. H. R. E. (29 November 2007). *The Scientific Aspects of the Existing and Proposed Definitions Relating to Products of Nanoscience and Nanotechnologies*, p. 22. European Commission, Health & Consumer Protection DG, Brussels.
- Schmid, O., Moller, W., Semmler-Behnke, M., Ferron, G. A., Karg, E., Lipka, J., Schulz, H., Kreyling, W. G., and Stoeger, T. (2009). Dosimetry and toxicology of inhaled ultrafine particles. *Biomarkers* **14** (Suppl. 1), 67–73.
- Sharma, H. S., Hussain, S., Schlager, J., Ali, S. F., and Sharma, A. (2010). Influence of nanoparticles on blood-brain barrier permeability and brain edema formation in rats. *Acta Neurochir Suppl* **106**, 359–64.
- Shimada, A., Kawamura, N., Okajima, M., Kaewamatawong, T., Inoue, H., and Morita, T. (2006). Translocation pathway of the intratracheally instilled ultrafine particles from the lung into the blood circulation in the mouse. *Toxicol Pathol* **34**, 949–57.
- Shvedova, A. A., Kisin, E. R., Mercer, R., Murray, A. R., Johnson, V. J., Potapovich, A. I., Tyurina, Y. Y., Gorelik, O., Arepalli, S., Schwegler-Berry, D., Hubbs, A. F., Antonini, J., Evans, D. E., Ku, B. K., Ramsey, D., Maynard, A., Kagan, V. E., Castranova, V., and Baron, P. (2005). Unusual inflammatory and fibrogenic pulmonary responses to single-walled carbon nanotubes in mice. *Am J Physiol Lung Cell Mol Physiol* **289**, L698–708.
- Shvedova, A. A., Kisin, E., Murray, A. R., Johnson, V. J., Gorelik, O., Arepalli, S., Hubbs, A. F., Mercer, R. R., Keohavong, P., Sussman, N., Jin, J., Yin, J., Stone, S., Chen, B. T., Deye, G., Maynard, A., Castranova, V., Baron, P. A., and Kagan, V. E. (2008). Inhalation vs. aspiration of single-walled carbon nanotubes in C57BL/6 mice: inflammation, fibrosis, oxidative stress, and mutagenesis. *Am J Physiol Lung Cell Mol Physiol* **295**, L552–65.
- Sinnott, S. (2002). Chemical functionalization of carbon nanotubes. *J Nanosci Nanotech* **2**, 113–23.
- Snyder, J. A., Demchuk, E., McCanlies, E. C., Schuler, C. R., Kreiss, K., Andrew, M. E., Frye, B. L., Ensey, J. S., Stanton, M. L., and Weston, A. (2008). Impact of negatively charged patches on the surface of MHC class II antigen-presenting proteins on risk of chronic beryllium disease. *J R Soc Interface* **5**, 749–58.
- Sonavane, G., Tomoda, K., and Makino, K. (2008). Biodistribution of colloidal gold nanoparticles after intravenous administration: effect of particle size. *Colloids Surf B Biointerfaces* **66**, 274–80.
- Sriram, K., Porter, D. W., Jefferson, A. M., Lin, G. X., Wolfarth, M. G., Chen, B. T., McKinney, W., Frazer, D. G., and Castranova, V. (2009). Neuroinflammation and blood-brain barrier changes following exposure to engineered nanomaterials (abstract). *The Toxicologist* **108**, A2197.
- Sriram, K., Porter, D. W., Tsuruoka, S., Endo, M., Jefferson, A. M., Wolfarth, M. G., Castranova, V., and Luster, M. I. (2007). Neuroinflammatory responses following exposure to engineered nanomaterials (abstract). *The Toxicologist* **96**, A288.
- Stanton, M. F., Layard, M., Tegeris, A., Miller, E., May, M., Morgan, E., and Smith, A. (1981). Relation of particle dimension to carcinogenicity in amphibole asbestoses and other fibrous minerals. *J Natl Cancer Inst* **67**, 965–75.
- Stone, V., Johnston, H., and Clift, M. J. (2007). Air pollution, ultrafine and nanoparticle toxicology: cellular and molecular interactions. *IEEE Trans Nanobioscience* **6**, 331–40.
- Sung, J. H., Ji, J. H., Park, J. D., Yoon, J. U., Kim, D. S., Jeon, K. S., Song, M. Y., Jeong, J., Han, B. S., Han, J. H., Chung, Y. H., Chang, H. K., Lee, J. H., Cho, M. H., Kelman, B. J., and Yu, I. J. (2009). Subchronic inhalation toxicity of silver nanoparticles. *Toxicol Sci* **108**, 452–61.
- Suzuki, Y., Yuen, S. R., and Ashley, R. (2005). Short, thin asbestos fibers contribute to the development of human malignant mesothelioma: pathological evidence. *Int J Hyg Environ Health* **208**, 201–10.
- Takagi, A., Hirose, A., Nishimura, T., Fukumori, N., Ogata, A., Ohashi, N., Kitajima, S., and Kanno, J. (2008). Induction of mesothelioma in p53+/- mouse by intraperitoneal application of multi-wall carbon nanotube. *J Toxicol Sci* **33**, 105–16.
- Takenaka, S., Karg, E., Roth, C., Schulz, H., Ziesenis, A., Heinzmann, U., Schramel, P., and Heyder, J. (2001). Pulmonary and systemic distribution of inhaled ultrafine silver particles in rats. *Environ Health Perspect* **109** (Suppl. 4), 547–51.
- Tang, J., Xiong, L., Wang, S., Wang, J., Liu, L., Li, J., Yuan, F., and Xi, T. (2009). Distribution, translocation and accumulation of silver nanoparticles in rats. *J Nanosci Nanotechnol* **9**, 4924–32.
- Tarantino-Hutchison, L. M., Sorrentino, C., Nadas, A., Zhu, Y., Rubin, E. M., Tinkle, S. S., Weston, A., and Gordon, T. (2009). Genetic determinants of sensitivity to beryllium in mice. *J Immunotoxicol* **6**, 130–5.
- Taylor, R., and Walton, D. R. M. (1993). The chemistry of fullerenes. *Nature* **363**, 685–93.
- Tian, Q., Zhang, C. N., Wang, X. H., Wang, W., Huang, W., Cha, R. T., Wang, C. H., Yuan, Z., Liu, M., Wan, H. Y., and Tang, H. (2010). Glycyrrhetic acid-modified chitosan/poly(ethylene glycol) nanoparticles for liver-targeted delivery. *Biomaterials* **31**, 4748–56.
- Tin Tin Win, S., Yamamoto, S., Ahmed, S., Kakeyama, M., Kobayashi, T., and Fujimaki, H. (2006). Brain cytokine and chemokine mRNA expression in mice induced by intranasal instillation with ultrafine carbon black. *Toxicol Lett* **163**, 153–60.
- Tinkle, S. S., Antonini, J. M., Rich, B. A., Roberts, J. R., Salmen, R., DePree, K., and Adkins, E. J. (2003). Skin as a route of exposure and sensitization in chronic beryllium disease. *Environ Health Perspect* **111**, 1202–8.
- Tran, C. L., Buchanan, D., Cullen, R. T., Searl, A., Jones, A. D., and Donaldson, K. (2000). Inhalation of poorly soluble particles. II. Influence Of particle surface area on inflammation and clearance. *Inhal Toxicol* **12**, 1113–26.
- Tsai, S. J., Hofmann, M., Hallock, M., Ada, E., Kong, J., and Ellenbecker, M. (2009). Characterization and evaluation of nanoparticle release during the synthesis of single-walled and multiwalled carbon nanotubes by chemical vapor deposition. *Environ Sci Technol* **43**, 6017–23.
- Tsuji, J. S., Maynard, A. D., Howard, P. C., James, J. T., Lam, C. W., Warheit, D. B., and Santamaria, A. B. (2006). Research strategies for safety evaluation of nanomaterials, part IV: risk assessment of nanoparticles. *Toxicol Sci* **89**, 42–50.
- Vallyathan, V., Castranova, V., Pack, D., Leonard, S., Shumaker, J., Hubbs, A. F., Shoemaker, D. A., Ramsey, D. M., Pretty, J. R., McLaurin, J. L., et al. (1995). Freshly fractured quartz inhalation leads to enhanced lung injury and inflammation. Potential role of free radicals. *Am J Respir Crit Care Med* **152**, 1003–9.
- Vallyathan, V., Kang, J. H., Van Dyke, K., Dalal, N. S., and Castranova, V. (1991). Response of alveolar macrophages to *in vitro* exposure to freshly fractured versus aged silica dust: the ability of Prosil 28, an organosilane material, to coat silica and reduce its biological reactivity. *J Toxicol Environ Health* **33**, 303–15.
- Vallyathan, V., Shi, X. L., Dalal, N. S., Irr, W., and Castranova, V. (1988). Generation of free radicals from freshly fractured silica dust. Potential role in acute silica-induced lung injury. *Am Rev Respir Dis* **138**, 1213–9.
- Varga, C., and Szendi, K. (2010). Carbon nanotubes induce granulomas but not mesotheliomas. *In Vivo* **24**, 153–6.
- Veronesi, B., Tajuba, J., Saleh, N., Ward, W., Hester, S., Carter, J., and Lowry, G. V. (2008). Functionally charged polystyrene particles activate

- immortalized mouse microglia (BV2): cellular and genomic response. *Nanotoxicology* **2**, 130–43.
- Wallace, W. E., Harrison, J., Keane, M. J., Bolsaitis, P., Eppelsheimer, D., Poston, J., and Page, S. J. (1990). Clay occlusion of respirable quartz particles detected by low voltage scanning electron microscopy-X-ray analysis. *Ann Occup Hyg* **34**, 195–204.
- Wallace, W. E., Jr., Vallyathan, V., Keane, M. J., and Robinson, V. (1985). In vitro biologic toxicity of native and surface-modified silica and kaolin. *J Toxicol Environ Health* **16**, 415–24.
- Walsh, K. M., and Poteracki, J. (1994). Spontaneous neoplasms in control Wistar rats. *Fundam Appl Toxicol* **22**, 65–72.
- Wang, F., Hwang, Y., Qian, P. Z., and Wang, X. (2010). A statistics-guided approach to precise characterization of nanowire morphology. *ACS Nano* **4**, 855–62.
- Wang, J., Liu, Y., and Li, Y. C. (2009). A new class of boron nanotube. *Chemphyschem* **10**, 3119–21.
- Wang, J., Zhou, G., Chen, C., Yu, H., Wang, T., Ma, Y., Jia, G., Gao, Y., Li, B., Sun, J., Li, Y., Jiao, F., Zhao, Y., and Chai, Z. (2007). Acute toxicity and biodistribution of different sized titanium dioxide particles in mice after oral administration. *Toxicology Letters* **168**, 176–85.
- Wang, L., Mercer, R. R., Rojanasakul, Y., Qiu, A., Lu, Y., Scabilloni, J. F., Wu, N., and Castranova, V. (2010). Direct fibrogenic effects of dispersed single-walled carbon nanotubes on human lung fibroblasts. *J Toxicol Environ Health A* **73**, 410–22.
- Warheit, D. B., Laurence, B. R., Reed, K. L., Roach, D. H., Reynolds, G. A., and Webb, T. R. (2004). Comparative pulmonary toxicity assessment of single-wall carbon nanotubes in rats. *Toxicol Sci* **77**, 117–25.
- Warheit, D. B., Reed, K. L., and Sayes, C. M. (2009). A role for nanoparticle surface reactivity in facilitating pulmonary toxicity and development of a base set of hazard assays as a component of nanoparticle risk management. *Inhal Toxicol* **21** (Suppl. 1), 61–7.
- Watari, F., Takashi, N., Yokoyama, A., Uo, M., Akasaka, T., Sato, Y., Abe, S., Totsuka, Y., and Tohji, K. (2009). Material nanosizing effect on living organisms: non-specific, biointeractive, physical size effects. *J R Soc Interface* **6** (Suppl. 3), S371–88.
- Wirtz, M., Yu, S., and Martin, C. R. (2002). Template synthesized gold nanotube membranes for chemical separations and sensing. *Analyst* **127**, 871–9.
- Wise, S. S., Holmes, A. L., Ketterer, M. E., Hartsock, W. J., Fomchenko, E., Katsifis, S., Thompson, W. D., and Wise, J. P., Sr. (2004). Chromium is the proximate clastogenic species for lead chromate-induced clastogenicity in human bronchial cells. *Mutat Res* **560**, 79–89.
- Wise, S. S., Holmes, A. L., Xie, H., Thompson, W. D., and Wise, J. P., Sr. (2006). Chronic exposure to particulate chromate induces spindle assembly checkpoint bypass in human lung cells. *Chem Res Toxicol* **19**, 1492–8.
- Wu, J., Liu, W., Xue, C., Zhou, S., Lan, F., Bi, L., Xu, H., Yang, X., and Zeng, F. D. (2009). Toxicity and penetration of TiO<sub>2</sub> nanoparticles in hairless mice and porcine skin after subchronic dermal exposure. *Toxicol Lett* **191**, 1–8.
- Wu, M., Gordon, R. E., Herbert, R., Padilla, M., Moline, J., Mendelson, D., Little, V., Travis, W. D., and Gil, J. (2010). Case report: lung disease in World Trade Center responders exposed to dust and smoke: carbon nanotubes found in the lungs of World Trade Center patients and dust samples. *Environ Health Perspect* **118**, 499–504.
- Wu, Y., Zhou, Q., Li, H., Liu, W., Wang, T., and Jiang, G. (2010). Effects of silver nanoparticles on the development and histopathology biomarkers of Japanese medaka (*Oryzias latipes*) using the partial-life test. *Aquat Toxicol* **100**, 160–67.
- Wu, Z. X., Barker, J. S., Batchelor, T. P., and Dey, R. D. (2008). Interleukin (IL)-1 regulates ozone-enhanced tracheal smooth muscle responsiveness by increasing substance P (SP) production in intrinsic airway neurons of ferret. *Respir Physiol Neurobiol* **164**, 300–11.
- Yamago, S., Tokuyama, H., Nakamura, E., Kikuchi, K., Kananishi, S., Sueki, K., Nakahara, H., Enomoto, S., and Ambe, F. (1995). In vivo biological behavior of a water-miscible fullerene: <sup>14</sup>C labeling, absorption, distribution, excretion and acute toxicity. *Chem Biol* **2**, 385–9.
- Yegles, M., Janson, X., Dong, H. Y., Renier, A., and Jaurand, M. C. (1995). Role of fibre characteristics on cytotoxicity and induction of anaphase/telophase aberrations in rat pleural mesothelial cells in vitro: correlations with in vivo animal findings. *Carcinogenesis* **16**, 2751–8.
- Yu, M. F., Lourie, O., Dyer, M. J., Moloni, K., Kelly, T. F., and Ruoff, R. S. (2000). Strength and breaking mechanism of multiwalled carbon nanotubes under tensile load. *Science* **287**, 637–40.

---

For reprints and permissions queries, please visit SAGE's Web site at <http://www.sagepub.com/journalsPermissions.nav>.