



NOV 26 1971
 CDC
 ATLANTA, GA.

Morbidity and Mortality

U.S. DEPARTMENT OF HEALTH, EDUCATION, AND WELFARE / PUBLIC HEALTH SERVICE HEALTH SERVICES AND MENTAL HEALTH ADMINISTRATION

DATE OF RELEASE: NOVEMBER 26, 1971 - ATLANTA, GEORGIA 30333

CURRENT TRENDS
 INFLUENZA

United States

On Nov. 17 and 18, 1971, the first influenza telephone survey of all state health departments was conducted by the Viral Diseases Branch, Epidemiology Program, CDC, as part of its routine influenza surveillance activities. No evidence of significant influenza activity was found, although a few states reported slight increases in influenza-like illness and laboratory evidence of influenza activity in sporadic cases.

Connecticut recorded one isolation of influenza A virus. The District of Columbia reported laboratory evidence of infection with influenza B in one patient in a survey of 200 routine admissions to a pediatric hospital in October. Georgia, Kentucky, Hawaii, Kansas, Montana, and South Carolina noted some increase in influenza-like illness; there has been no specific laboratory confirmation in those states.

Europe

The World Health Organization has been notified of widespread influenza activity in Eastern Europe. Influenza-

CONTENTS

Current Trends
 Influenza 419
 Epidemiologic Notes and Reports
 Respiratory Illness - Trust Territory
 of the Pacific Islands 420
 Surveillance Summary
 Rubella - United States, 1970-71 420
 Summary of Reported Cases of Infectious Syphilis 426

like illness was noted in Romania in mid-September, and markedly increased incidence of influenza has been observed there since mid-October. Widespread disease with moderate absenteeism in schools and factories has been reported, and 24 strains of A2 virus similar to A2/Hong Kong/68 have been isolated. Epidemic influenza in Bulgaria was noted in early October in Sofia, and 55 strains of A2/Hong Kong/68 were isolated during October. Widespread disease was recognized
(Continued on page 420)

TABLE I. CASES OF SPECIFIED NOTIFIABLE DISEASES: UNITED STATES
 (Cumulative totals include revised and delayed reports through previous weeks)

DISEASE	46th WEEK ENDED		MEDIAN 1966 - 1970	CUMULATIVE, FIRST 46 WEEKS		
	November 20, 1971	November 21, 1970		1971	1970	MEDIAN 1966 - 1970
Aseptic meningitis	81	131	79	4,683	5,554	3,168
Brucellosis	5	3	3	147	190	208
Diphtheria	9	7	7	167	395	172
Encephalitis, primary:						
Arthropod-borne & unspecified	28	28	28	1,369	1,424	1,424
Encephalitis, post-infectious	4	5	5	306	351	432
Hepatitis, serum	207	173	78	7,728	6,501	4,038
Hepatitis, infectious	1,205	1,241	902	53,699	50,119	40,168
Malaria	25	112	65	2,680	3,065	2,108
Measles (rubeola)	462	393	310	72,424	42,450	42,450
Meningococcal infections, total	17	52	38	1,995	2,181	2,270
Civilian	16	30	37	1,783	1,929	2,079
Military	1	22	2	212	252	211
Mumps	1,979	2,263	---	110,276	88,472	---
Poliomyelitis, total	—	—	2	11	26	38
Paralytic	—	—	—	8	26	29
Rubella (German measles)	302	482	319	41,372	52,711	46,405
Tetanus	1	5	4	98	120	151
Tularemia	1	5	4	168	138	150
Typhoid fever	6	7	7	374	309	345
Typhus, tick-borne (Rky. Mt. spotted fever)	3	2	1	397	332	293
Rabies in animals	66	48	53	3,541	2,698	3,038

TABLE II. NOTIFIABLE DISEASES OF LOW FREQUENCY

	Cum.		Cum.
Anthrax	4	Psittacosis	35
Botulism	15	Rabies in Man	1
Leprosy	108	Rubella congenital syndrome: Calif.-1, Tex.-3	53
Leptospirosis: Tex.-7	35	Trichinosis: Calif.-1, N.J.-1	88
Plague	1	Typhus, murine: Tex.-1	22

INFLUENZA — (Continued from front page)

in early November in Hungary, both in Budapest and in counties in the southwest and northeast of the country; one strain of A2/Hong Kong/68 virus had been isolated by November 9.

In Western Europe, influenza has been recognized in the Netherlands and Spain. Sporadic cases of influenza-like illness have been noted in the Western District of the Netherlands since late October, and five strains of A2/Hong Kong/68 virus and two strains of influenza B virus have been isolated. Sporadic cases of influenza-like illness were noted in northwestern Spain in mid-October, and four strains of A2/Hong Kong/68 virus had been isolated by the end of October.

Western Hemisphere

A2/Hong Kong/68 influenza was documented in Trini-

dad and Tobago in early October, but this epidemic was reported on October 28 as being on the decline.

(Reported by the Viral Diseases Branch, Epidemiology Program, CDC; and the World Health Organization: Weekly Epidemiological Record, Vol. 46, No. 41, 43-46, 1971.)

Editorial Note**United States**

Since very little influenza A was recognized country-wide during the 1970-71 season, it appears probable that influenza A will occur in the United States this fall and winter. Although the location and extent of outbreaks are difficult to foresee, regional influenza outbreaks appear more likely than nationwide involvement.

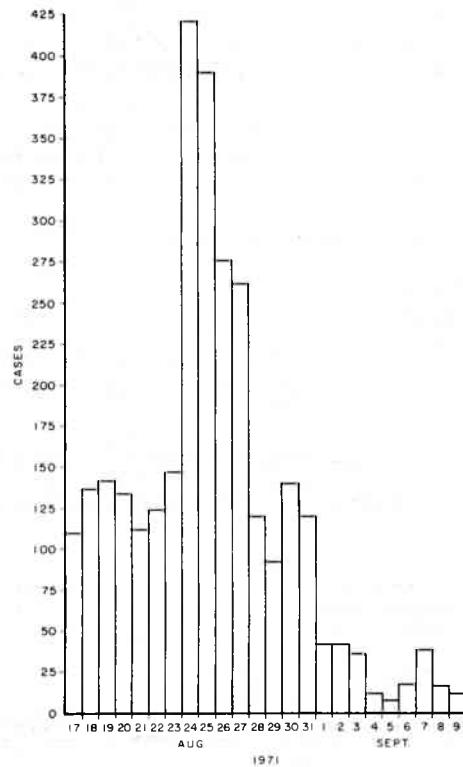
EPIDEMIOLOGIC NOTES AND REPORTS**RESPIRATORY ILLNESS — Trust Territory of the Pacific Islands**

In mid-July, an outbreak of febrile, respiratory illness on Saipan, Trust Territory of the Pacific Islands, was reported. In the following 2 months, a similar disease was noted in all six districts of the Trust Territory; approximately 15,000 cases were identified. The most common symptoms were fever, cough, rhinorrhea, and malaise. Inhabitants of the island of Ebeye, Marshall Islands, also reported diarrhea, nausea, and vomiting. Throughout the Trust Territory, children appeared to have been more frequently affected than adults. Attack rates on individual islands were as high as 60 percent. An influenza B strain similar to B/Mass/3/66 was isolated from specimens from three patients, and unpaired sera compared by geometric mean titer were compatible with recent influenza B infection.

A review of the outpatient records on Ebeye (population approximately 5,000) showed 3,075 cases of respiratory illness with onset between Aug. 17 and Sept. 9, 1971 (Figure 1). Pneumonia was confirmed by roentgenogram in 36 patients and was suspected in 10 others. Among the pneumonia patients, there were five deaths in persons over 45 years of age with known cardio-respiratory disease and three deaths in children under 5 years of age. One of these children suffered from severe malnutrition. Encephalopathy was diagnosed in four children; two of them had continued neurologic deficits. SGOT elevations were noted in all four children, suggesting Reye's syndrome.

(Reported by James Chandler, M.D., Medical Officer, Ebeye, Marshall Islands, John H. Schaffer, M.D., Medical Officer, Kwajalein Island, William Peck, M.D., High Commissioner for Health, Kevin Murphy, Public Health Aid, Trust Territory of the Pacific Islands; and an EIS Officer.)

Figure 1
CASES OF RESPIRATORY ILLNESS BY ONSET
EBEYE, MARSHALL ISLANDS, AUG. 17-SEPT 19, 1971

**SURVEILLANCE SUMMARY****RUBELLA — United States, 1970-71**

In the rubella epidemiologic year (EY)* 1970-71, 44,050 cases of rubella were reported in the United States, a 20.4 percent decrease from the total reported for EY 1969-70, and a 9.6 percent drop from the average reported for the 3 epidemiologic years before rubella vaccine was licensed, in 1969. This represents the first decrease since rubella was added to the list of notifiable diseases in January 1966 (Table 1).

*The rubella epidemiologic year begins with calendar week 41 and ends with week 40 of the following year.

Voluntary reporting by some states prior to 1966 suggested a cyclical pattern of high rubella activity every 6-9 years. Since the last epidemic occurred in 1964-65, another peak is expected in the early 1970's. To date, no such rise has occurred (Figure 2). The seasonal pattern of rubella, with the majority of cases occurring in the spring, remains unchanged. In addition, none of the nine regions have had a major change in rubella activity since 1968 (Figure 3).

Between June 1, 1969, and Aug. 31, 1971, a total of 32,413,055 doses of rubella vaccine were distributed in the

Table 1
Rubella Cases and Case Rate,
by Epidemiologic Year, 1966-71 - United States*

Epidemiologic Year	Number of Cases	Cases/100,000 Population**
1966-67	43,928	21.6
1967-68	48,369	24.8
1968-69	53,799	26.5
1969-70	55,344	27.2
1970-71	44,050	21.7

*Data from MMWR.

**1970 Census data.

United States. Of this total, 23,492,108 doses were administered in public programs, reaching 38.9 percent of children aged 1-4 and 67.5 percent of those aged 5-9. Approximately 50 percent of the entire target population, children age 1-12, have been vaccinated.

Because of incompleteness and inaccuracy in reporting, as well as normal cyclical changes in the incidence of rubella, surveillance data must be interpreted with caution. Nevertheless, preliminary data suggest that the incidence of rubella has been markedly reduced in areas that conducted effective vaccination programs compared with areas where vaccine usage has been less comprehensive.

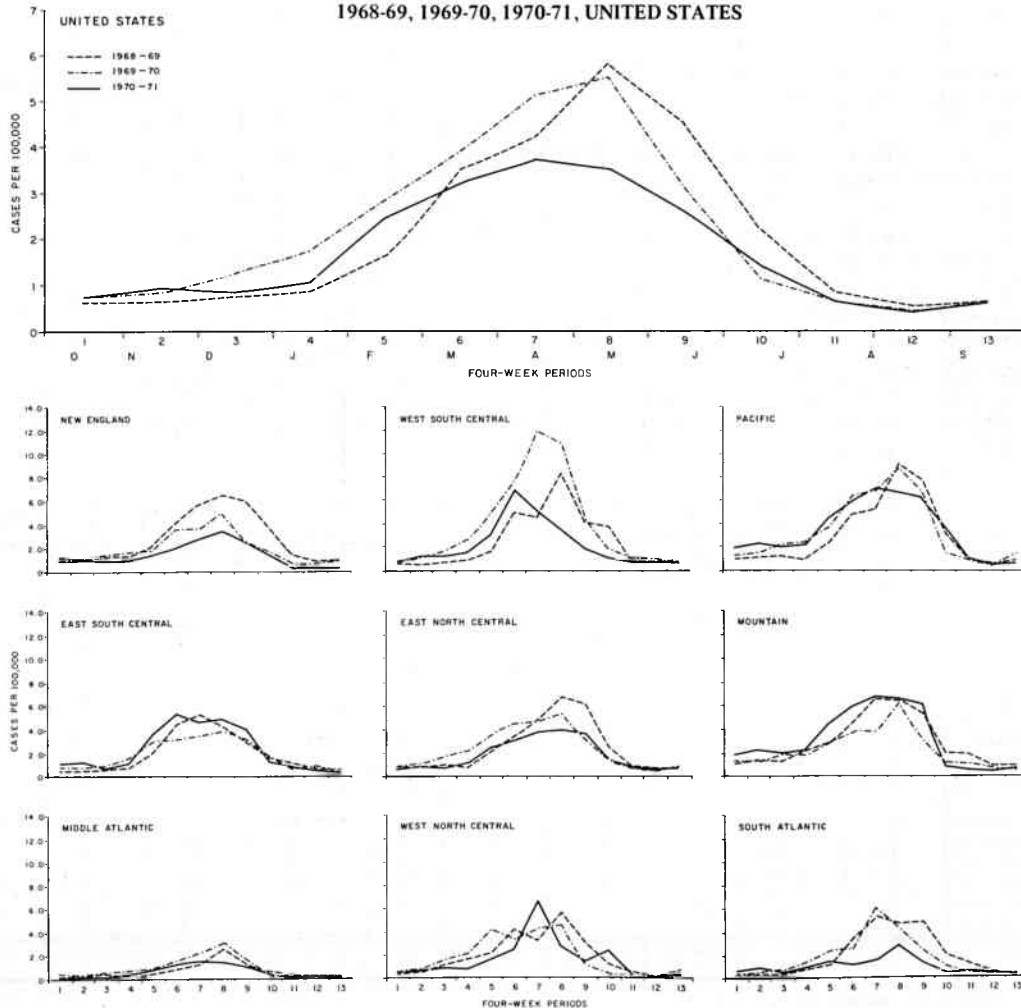
(Reported by the Investigations and Evaluation Section, Field Services Branch, Epidemiology Program, CDC.)

Figure 2
RUBELLA INCIDENCE - TEN SELECTED AREAS,*
UNITED STATES, 1928-1970



The Rubella Surveillance Report published in October 1971 describes in detail rubella activity and vaccine use in 1970-71. A copy of this report is available on request from
 Center for Disease Control
 Attn: Chief, Vaccine Evaluation and Investigation Section
 Field Services Branch
 Epidemiology Program
 Atlanta, Georgia 30333

Figure 3
RUBELLA CASE RATES, BY 4-WEEK PERIODS, EPIDEMIOLOGIC YEARS
1968-69, 1969-70, 1970-71, UNITED STATES



Morbidity and Mortality Weekly Report

TABLE III. CASES OF SPECIFIED NOTIFIABLE DISEASES: UNITED STATES

FOR WEEKS ENDED

NOVEMBER 20, 1971 AND NOVEMBER 21, 1970 (46th WEEK)

AREA	ASEPTIC MENIN- GITIS	BRUCEL- LOSIS	DIPH- THERIA	ENCEPHALITIS			HEPATITIS			MALARIA	
				Primary including unsp. cases		Post In- fectious	Serum	Infectious		1971	Cum. 1971
				1971	1970	1971		1971	1970		
UNITED STATES.....	81	5	9	28	28	4	207	1,205	1,241	25	2,680
NEW ENGLAND.....	1	-	-	1	-	-	1	95	95	3	81
Maine.*.....	-	-	-	-	-	-	-	10	12	-	5
New Hampshire.....	-	-	-	-	-	-	-	4	2	-	-
Vermont.....	-	-	-	-	-	-	-	6	6	-	1
Massachusetts.....	1	-	-	1	-	-	-	54	46	3	57
Rhode Island.....	-	-	-	-	-	-	-	9	9	-	8
Connecticut.....	-	-	-	-	-	-	1	12	20	-	10
MIDDLE ATLANTIC.....	6	-	-	3	6	-	81	265	265	2	265
New York City.....	-	-	-	-	2	-	38	47	72	-	24
New York, Up-State...	6	-	-	2	2	-	8	62	66	-	72
New Jersey.*.....	-	-	-	-	1	-	26	58	60	2	113
Pennsylvania.....	-	-	-	1	1	-	9	98	67	-	56
EAST NORTH CENTRAL.....	17	-	-	9	12	1	44	132	195	2	173
Ohio.....	5	-	-	4	5	1	1	46	56	-	22
Indiana.....	3	-	-	4	1	-	-	5	16	-	14
Illinois.....	3	-	-	-	3	-	16	60	26	-	52
Michigan.....	3	-	-	-	2	-	25	9	85	2	55
Wisconsin.....	3	-	-	1	1	-	2	12	12	-	30
WEST NORTH CENTRAL.....	1	-	3	5	2	-	6	35	71	4	246
Minnesota.....	-	-	-	1	-	-	1	3	6	-	36
Iowa.....	1	-	-	-	1	-	-	4	7	-	26
Missouri.....	-	-	-	3	-	-	1	9	43	-	27
North Dakota.....	-	-	-	-	-	-	-	-	3	-	3
South Dakota.....	-	-	3	-	-	-	-	11	-	-	2
Nebraska.....	-	-	-	-	-	-	-	2	2	-	14
Kansas.....	-	-	-	1	1	-	4	6	10	4	138
SOUTH ATLANTIC.....	15	2	-	2	2	2	28	158	112	5	400
Delaware.....	-	-	-	-	-	-	-	1	3	-	2
Maryland.....	-	-	-	-	1	-	2	23	14	-	52
Dist. of Columbia...	-	-	-	-	-	-	1	1	1	-	4
Virginia.....	4	2	-	-	1	-	5	27	30	1	67
West Virginia.....	-	-	-	-	-	-	-	11	13	-	7
North Carolina.....	-	-	-	1	-	-	5	24	19	2	137
South Carolina.....	-	-	-	-	-	-	-	8	3	-	20
Georgia.....	-	-	-	-	-	-	-	7	6	1	68
Florida.....	11	-	-	1	-	2	15	56	23	1	43
EAST SOUTH CENTRAL.....	8	1	-	1	1	-	2	63	42	-	289
Kentucky.....	4	-	-	-	-	-	-	36	16	-	259
Tennessee.....	3	-	-	-	-	-	-	18	18	-	-
Alabama.....	-	-	-	-	-	-	2	5	4	-	21
Mississippi.....	1	1	-	1	1	-	-	4	4	-	9
WEST SOUTH CENTRAL.....	6	-	3	1	1	-	5	101	78	-	523
Arkansas.....	1	-	-	-	-	-	-	1	3	-	20
Louisiana.....	2	-	1	-	-	-	2	8	13	-	38
Oklahoma.....	-	-	-	-	1	-	1	16	5	-	71
Texas.....	3	-	2	1	-	-	2	76	57	-	394
MOUNTAIN.....	1	-	1	-	-	-	5	55	82	1	152
Montana.....	-	-	-	-	-	-	-	8	8	-	1
Idaho.....	-	-	-	-	-	-	-	2	11	-	5
Wyoming.....	-	-	-	-	-	-	-	2	-	-	3
Colorado.....	-	-	-	-	-	-	-	10	33	-	117
New Mexico.....	-	-	-	-	-	-	2	10	5	-	11
Arizona.....	1	-	1	-	-	-	1	14	13	1	10
Utah.....	-	-	-	-	-	-	2	9	10	-	3
Nevada.....	-	-	-	-	-	-	-	-	2	-	2
PACIFIC.....	26	2	2	6	4	1	35	301	301	8	551
Washington.....	1	-	1	1	-	-	1	55	94	-	2
Oregon.....	1	-	-	-	-	1	2	37	15	-	20
California.....	24	2	1	5	4	-	32	205	187	7	467
Alaska.....	-	-	-	-	-	-	-	2	2	-	6
Hawaii.....	-	-	-	-	-	-	-	2	3	1	56
Puerto Rico.*.....	-	-	-	-	-	-	-	-	25	-	23
Virgin Islands.....	-	-	-	-	-	-	-	-	-	-	-

*Delayed reports: Hepatitis, serum: Me. 2, P.R. 5
Hepatitis, infectious: Me. 2, N.J. delete 5, P.R. 13

TABLE III. CASES OF SPECIFIED NOTIFIABLE DISEASES: UNITED STATES
FOR WEEKS ENDED
NOVEMBER 20, 1971 AND NOVEMBER 21, 1970 (46th WEEK) - CONTINUED

AREA	MEASLES (Rubeola)			MENINGOCOCCAL INFECTIONS, TOTAL			MUMPS		POLIOMYELITIS		
	1971	Cumulative		1971	Cumulative		1971	Cum. 1971	Total	Paralytic	
		1971	1970		1971	1970			1971	1971	1971
UNITED STATES.....	462	72,424	42,450	17	1,995	2,181	1,979	110,276	-	-	8
NEW ENGLAND.....	5	3,486	964	3	94	96	94	6,612	-	-	-
Maine.....*	3	1,476	261	1	9	5	-	1,232	-	-	-
New Hampshire.....*	-	211	61	1	19	9	-	667	-	-	-
Vermont.....	-	118	8	-	-	8	7	433	-	-	-
Massachusetts.....	1	255	413	1	35	39	30	1,635	-	-	-
Rhode Island.....	-	238	120	-	3	6	19	1,249	-	-	-
Connecticut.....	1	1,188	101	-	28	29	38	1,396	-	-	-
MIDDLE ATLANTIC.....	36	7,671	5,090	-	268	404	40	6,535	-	-	-
New York City.....	3	3,793	991	-	55	87	26	1,912	-	-	-
New York, Up-State...	2	696	356	-	81	77	NN	NN	-	-	-
New Jersey.....	29	1,254	1,719	-	60	165	3	1,723	-	-	-
Pennsylvania.....	2	1,928	2,024	-	72	75	11	2,900	-	-	-
EAST NORTH CENTRAL.....	261	16,223	10,149	2	233	253	653	43,720	-	-	-
Ohio.....	12	4,046	3,871	1	75	92	167	8,234	-	-	-
Indiana.....*	85	2,857	274	-	18	22	31	5,277	-	-	-
Illinois.....	91	3,179	3,136	-	66	65	67	4,724	-	-	-
Michigan.....	46	2,505	1,810	1	59	62	97	10,055	-	-	-
Wisconsin.....	27	3,636	1,058	-	15	12	291	15,430	-	-	-
WEST NORTH CENTRAL.....	38	7,085	3,907	-	142	112	291	8,337	-	-	-
Minnesota.....	2	57	40	-	26	19	30	1,274	-	-	-
Iowa.....	35	2,500	1,169	-	12	13	191	4,334	-	-	-
Missouri.....	1	2,606	1,276	-	49	59	32	1,073	-	-	-
North Dakota.....	-	238	320	-	6	5	5	365	-	-	-
South Dakota.....	-	221	96	-	6	1	4	257	-	-	-
Nebraska.....	-	69	937	-	15	8	29	191	-	-	-
Kansas.....	-	1,394	69	-	28	7	-	843	-	-	-
SOUTH ATLANTIC.....	30	8,708	7,381	3	349	428	188	8,001	-	-	1
Delaware.....	-	42	267	-	2	3	1	181	-	-	-
Maryland.....	1	554	1,381	1	51	43	16	730	-	-	-
Dist. of Columbia.....*	-	15	345	-	13	3	-	95	-	-	-
Virginia.....	6	1,611	2,044	2	42	46	18	1,026	-	-	-
West Virginia.....	9	547	325	-	11	12	108	2,287	-	-	-
North Carolina.....	6	1,955	900	-	59	93	NN	NN	-	-	-
South Carolina.....	1	920	608	-	20	46	12	898	-	-	-
Georgia.....	-	1,133	17	-	24	37	-	11	-	-	1
Florida.....	7	1,931	1,494	-	127	145	33	2,773	-	-	-
EAST SOUTH CENTRAL.....	4	8,416	1,592	-	181	159	62	8,264	-	-	-
Kentucky.....	2	3,964	898	-	53	58	8	2,435	-	-	-
Tennessee.....	-	1,025	422	-	71	66	52	4,719	-	-	-
Alabama.....	-	1,954	171	-	31	24	-	957	-	-	-
Mississippi.....	2	1,473	101	-	26	11	2	153	-	-	-
WEST SOUTH CENTRAL.....	15	12,643	8,500	5	178	274	160	8,994	-	-	3
Arkansas.....	-	778	30	-	5	23	36	150	-	-	-
Louisiana.....	-	1,701	174	3	67	67	-	144	-	-	-
Oklahoma.....	-	757	731	-	10	21	2	186	-	-	-
Texas.....	15	9,407	7,565	2	96	163	122	8,514	-	-	3
MOUNTAIN.....	7	3,422	1,707	-	60	51	92	4,472	-	-	2
Montana.....	-	925	101	-	7	1	1	412	-	-	-
Idaho.....	2	274	105	-	11	7	3	149	-	-	-
Wyoming.....	-	85	11	-	2	2	37	353	-	-	-
Colorado.....	3	839	189	-	7	17	35	1,498	-	-	1
New Mexico.....	1	400	257	-	5	2	7	699	-	-	-
Arizona.....	1	556	987	-	8	16	9	1,190	-	-	-
Utah.....	-	336	36	-	17	5	-	171	-	-	-
Nevada.....	-	7	21	-	3	1	-	-	-	-	1
PACIFIC.....	66	4,770	3,160	4	490	404	399	15,341	-	-	2
Washington.....	21	1,091	645	1	31	46	201	6,214	-	-	1
Oregon.....	-	377	389	-	39	30	40	1,545	-	-	1
California.....	20	2,740	1,796	3	410	325	150	6,572	-	-	-
Alaska.....	7	63	141	-	1	-	5	99	-	-	-
Hawaii.....	18	499	189	-	9	3	3	911	-	-	-
Puerto Rico.....*	-	581	968	-	10	5	-	1,147	-	-	-
Virgin Islands.....	-	17	8	-	-	3	1	75	-	-	-

*Delayed reports: Measles: Me. 3, P.R. 5
Meningococcal infections: N.H. delete 4, Ind. delete 1
Mumps: D.C. 1, P.R. 18

Morbidity and Mortality Weekly Report

TABLE III. CASES OF SPECIFIED NOTIFIABLE DISEASES: UNITED STATES
FOR WEEKS ENDED
NOVEMBER 20, 1971 AND NOVEMBER 21, 1970 (46th WEEK) - CONTINUED

AREA	RUBELLA		TETANUS		TULAREMIA		TYPHOID FEVER		TYPHUS FEVER TICK-BORNE (Rky. Mt. Spotted)		RABIES IN ANIMALS	
	1971	Cum. 1971	1971	Cum. 1971	1971	Cum. 1971	1971	Cum. 1971	1971	Cum. 1971	1971	Cum. 1971
UNITED STATES.....	302	41,372	1	98	1	168	6	374	3	397	66	3,541
NEW ENGLAND.....	5	1,799	-	6	-	1	1	17	-	5	5	207
Maine, ♯.....	-	271	-	-	-	-	-	1	-	-	2	180
New Hampshire.....	-	46	-	2	-	-	-	-	-	-	-	3
Vermont.....	-	102	-	-	-	-	-	-	-	-	3	15
Massachusetts.....	1	846	-	1	-	-	1	12	-	3	-	8
Rhode Island.....	1	103	-	-	-	-	-	-	-	2	-	1
Connecticut.....	3	431	-	3	-	1	-	4	-	-	-	-
MIDDLE ATLANTIC.....	34	2,660	-	8	-	-	1	91	-	37	3	149
New York City.....	7	591	-	5	-	-	1	22	-	1	-	-
New York, Up-State..	-	431	-	1	-	-	-	14	-	17	2	128
New Jersey.....	22	615	-	1	-	-	-	8	-	9	-	-
Pennsylvania, ♯.....	5	1,023	-	1	-	-	-	47	-	10	1	21
EAST NORTH CENTRAL....	102	9,005	-	13	1	6	1	52	1	20	11	371
Ohio.....	7	1,018	-	2	-	1	-	20	1	15	1	108
Indiana.....	29	2,155	-	2	-	-	-	6	-	-	2	79
Illinois.....	9	1,331	-	6	1	2	-	13	-	3	-	68
Michigan.....	32	2,817	-	3	-	1	-	7	-	2	1	46
Wisconsin.....	25	1,684	-	-	-	2	1	6	-	-	7	70
WEST NORTH CENTRAL....	6	3,276	-	6	-	19	-	4	-	8	16	987
Minnesota.....	-	280	-	3	-	-	-	-	-	-	6	228
Iowa.....	5	718	-	1	-	-	-	-	-	2	3	216
Missouri.....	-	1,369	-	2	-	15	-	4	-	4	3	141
North Dakota.....	-	96	-	-	-	-	-	-	-	-	3	170
South Dakota.....	1	99	-	-	-	1	-	-	-	-	-	120
Nebraska.....	-	93	-	-	-	-	-	-	-	-	-	6
Kansas.....	-	621	-	-	-	3	-	-	-	2	1	106
SOUTH ATLANTIC.....	29	3,273	1	24	-	23	-	51	-	205	6	390
Delaware.....	-	50	-	-	-	-	-	1	-	2	-	-
Maryland.....	2	164	-	1	-	4	-	4	-	31	-	1
Dist. of Columbia, ♯.	-	8	-	3	-	-	-	4	-	-	-	-
Virginia.....	1	221	-	3	-	9	-	15	-	35	2	74
West Virginia.....	3	704	-	-	-	-	-	4	-	4	2	120
North Carolina.....	-	49	1	2	-	4	-	4	-	106	-	7
South Carolina.....	11	450	-	1	-	-	-	2	-	14	-	-
Georgia.....	-	1	-	2	-	4	-	2	-	13	1	134
Florida.....	12	1,626	-	12	-	2	-	15	-	-	1	54
EAST SOUTH CENTRAL....	14	3,942	-	14	-	12	-	45	-	63	9	325
Kentucky.....	6	1,730	-	2	-	2	-	11	-	13	3	164
Tennessee.....	6	1,926	-	7	-	7	-	25	-	34	2	101
Alabama.....	-	211	-	4	-	2	-	8	-	9	4	56
Mississippi.....	2	75	-	1	-	1	-	1	-	7	-	4
WEST SOUTH CENTRAL....	30	4,936	-	16	-	62	-	35	2	47	7	695
Arkansas.....	1	338	-	1	-	25	-	11	-	5	1	93
Louisiana.....	1	288	-	3	-	8	-	6	-	1	2	39
Oklahoma.....	1	75	-	2	-	17	-	3	-	28	-	267
Texas.....	27	4,235	-	10	-	12	-	15	2	13	4	296
MOUNTAIN.....	18	2,018	-	2	-	40	-	9	-	12	3	72
Montana.....	-	116	-	-	-	2	-	-	-	3	-	-
Idaho.....	3	43	-	1	-	1	-	-	-	4	-	-
Wyoming.....	-	860	-	-	-	-	-	-	-	-	1	12
Colorado.....	3	306	-	-	-	-	-	2	-	2	-	11
New Mexico.....	4	239	-	-	-	-	-	5	-	1	-	9
Arizona.....	8	372	-	1	-	-	-	2	-	-	1	25
Utah.....	-	67	-	-	-	37	-	-	-	1	-	10
Nevada.....	-	15	-	-	-	-	-	-	-	1	1	5
PACIFIC.....	64	10,463	-	9	-	5	3	70	-	-	6	345
Washington.....	8	1,452	-	1	-	-	-	1	-	-	-	-
Oregon.....	4	780	-	1	-	3	-	-	-	-	-	9
California.....	51	8,007	-	7	-	2	3	64	-	-	6	302
Alaska.....	-	50	-	-	-	-	-	1	-	-	-	34
Hawaii.....	1	174	-	-	-	-	-	4	-	-	-	-
Puerto Rico.....	-	62	-	7	-	-	-	3	-	-	-	69
Virgin Islands.....	-	1	-	-	-	-	-	-	-	-	-	-

*Delayed reports: Rubella: Me. 1
Tetanus: D.C. 1
Typhoid fever: Pa. delete 1, D.C. 1

Week No.
46

TABLE IV. DEATHS IN 122 UNITED STATES CITIES FOR WEEK ENDED NOVEMBER 20, 1971

(By place of occurrence and week of filing certificate. Excludes fetal deaths)

Area	All Causes		Pneumonia and Influenza All Ages	Under 1 year All Causes	Area	All Causes		Pneumonia and Influenza All Ages	Under 1 year All Causes
	All Ages	65 years and over				All Ages	65 years and over		
NEW ENGLAND:	739	455	38	34	SOUTH ATLANTIC:	1,174	631	53	51
Boston, Mass.-----	244	128	8	12	Atlanta, Ga.-----	152	67	5	6
Bridgeport, Conn.-----	32	17	2	—	Baltimore, Md.-----	255	148	5	12
Cambridge, Mass.-----	31	20	8	2	Charlotte, N. C.-----	35	18	1	2
Fall River, Mass.-----	29	22	1	1	Jacksonville, Fla.-----	91	43	5	—
Hartford, Conn.-----	49	31	—	1	Miami, Fla.-----	99	53	1	4
Lowell, Mass.-----	29	17	2	3	Norfolk, Va.-----	53	24	6	2
Lynn, Mass.-----	16	15	—	—	Richmond, Va.-----	86	44	6	10
New Bedford, Mass.-----	23	17	—	—	Savannah, Ga.-----	39	18	2	2
New Haven, Conn.-----	54	34	1	2	St. Petersburg, Fla.-----	95	82	1	2
Providence, R. I.-----	69	42	9	7	Tampa, Fla.-----	93	50	12	2
Somerville, Mass.-----	6	4	—	1	Washington, D. C.-----	132	62	8	8
Springfield, Mass.-----	66	46	5	2	Wilmington, Del.-----	44	22	1	1
Waterbury, Conn.-----	31	24	1	1	EAST SOUTH CENTRAL:	669	372	36	26
Worcester, Mass.-----	60	38	1	2	Birmingham, Ala.-----	95	46	3	6
MIDDLE ATLANTIC:	3,429	2,066	133	101	Chattanooga, Tenn.-----	57	30	9	5
Albany, N. Y.-----	50	27	4	1	Knoxville, Tenn.-----	46	29	2	1
Allentown, Pa.-----	30	21	2	1	Louisville, Ky.-----	121	67	11	4
Buffalo, N. Y.-----	145	85	4	4	Memphis, Tenn.-----	158	93	5	3
Camden, N. J.-----	38	22	5	2	Mobile, Ala.-----	48	25	1	1
Elizabeth, N. J.-----	40	22	1	1	Montgomery, Ala.-----	30	19	3	—
Erie, Pa.-----	43	25	4	1	Nashville, Tenn.-----	114	63	2	6
Jersey City, N. J.-----	59	34	3	1	WEST SOUTH CENTRAL:	1,179	595	31	57
Newark, N. J.-----	77	42	3	3	Austin, Tex.-----	40	25	2	1
New York City, N. Y.†	1,697	1,026	62	48	Baton Rouge, La.-----	34	17	3	3
Paterson, N. J.-----	33	27	2	—	Corpus Christi, Tex.-----	23	7	—	—
Philadelphia, Pa.-----	608	341	9	24	Dallas, Tex.-----	171	81	1	7
Pittsburgh, Pa.-----	184	104	10	3	El Paso, Tex.-----	48	23	2	7
Reading, Pa.-----	38	27	1	1	Fort Worth, Tex.-----	97	52	3	4
Rochester, N. Y.-----	116	90	6	1	Houston, Tex.-----	253	116	1	1
Schenectady, N. Y.-----	25	20	2	—	Little Rock, Ark.-----	34	20	2	—
Scranton, Pa.-----	43	28	5	—	New Orleans, La.-----	151	80	4	6
Syracuse, N. Y.-----	82	54	2	6	Oklahoma City, Okla.-----	89	47	2	11
Trenton, N. J.-----	55	28	1	3	San Antonio, Tex.-----	129	68	1	9
Utica, N. Y.-----	35	23	4	—	Shreveport, La.-----	44	17	2	4
Yonkers, N. Y.-----	31	20	3	1	Tulsa, Okla.-----	66	42	8	4
EAST NORTH CENTRAL:	2,719	1,546	83	138	MOUNTAIN:	472	276	19	15
Akron, Ohio-----	72	35	1	6	Albuquerque, N. Mex.-----	52	28	4	2
Canton, Ohio-----	35	22	2	2	Colorado Springs, Colo.-----	39	23	3	2
Chicago, Ill.-----	761	450	16	38	Denver, Colo.-----	112	64	—	4
Cincinnati, Ohio-----	122	68	4	6	Ogden, Utah-----	14	11	2	1
Cleveland, Ohio-----	187	87	4	17	Phoenix, Ariz.-----	111	62	1	5
Columbus, Ohio-----	133	61	—	5	Pueblo, Colo.-----	28	20	6	—
Dayton, Ohio-----	118	67	3	4	Salt Lake City, Utah-----	60	33	1	1
Detroit, Mich.-----	393	207	7	16	Tucson, Ariz.-----	56	35	2	—
Evansville, Ind.-----	38	21	—	2	PACIFIC:	1,644	1,022	37	53
Flint, Mich.-----	57	33	1	3	Berkeley, Calif.-----	14	10	—	—
Fort Wayne, Ind.-----	48	32	5	3	Fresno, Calif.-----	35	22	1	2
Gary, Ind.-----	35	18	3	4	Glendale, Calif.-----	39	27	—	—
Grand Rapids, Mich.-----	58	42	8	4	Honolulu, Hawaii-----	54	23	4	4
Indianapolis, Ind.-----	173	93	4	10	Long Beach, Calif.-----	99	57	2	2
Madison, Wis.-----	39	21	6	3	Los Angeles, Calif.-----	536	347	9	13
Milwaukee, Wis.-----	138	94	2	5	Oakland, Calif.-----	67	50	—	—
Peoria, Ill.-----	35	17	1	2	Pasadena, Calif.-----	37	24	—	—
Rockford, Ill.-----	35	26	9	—	Portland, Oreg.-----	160	102	1	8
South Bend, Ind.-----	56	37	3	2	Sacramento, Calif.-----	60	31	1	5
Toledo, Ohio-----	109	71	4	3	San Diego, Calif.-----	95	51	—	7
Youngstown, Ohio-----	77	44	—	3	San Francisco, Calif.-----	167	102	5	3
WEST NORTH CENTRAL:	804	505	18	39	San Jose, Calif.-----	43	25	—	1
Des Moines, Iowa-----	61	40	1	2	Seattle, Wash.-----	143	93	5	1
Duluth, Minn.-----	26	16	—	3	Spokane, Wash.-----	52	34	7	6
Kansas City, Kans.-----	35	14	1	3	Tacoma, Wash.-----	43	24	2	1
Kansas City, Mo.-----	134	83	4	3	Total	12,829	7,468	448	514
Lincoln, Nebr.-----	26	18	3	1	Expected Number	12,804	7,352	467	580
Minneapolis, Minn.-----	93	61	1	7	Cumulative Total (includes reported corrections for previous weeks)	585,518	335,884	21,118	26,260
Omaha, Nebr.-----	96	67	—	3	Las Vegas, Nev.*	---	---	---	---
St. Louis, Mo.-----	213	127	5	13					
St. Paul, Minn.-----	84	54	2	4					
Wichita, Kans.-----	36	25	1	—					

*Mortality data are being collected from Las Vegas, Nev., for possible inclusion in this table, however, for statistical reasons, these data will be listed only and not included in the total, expected number, or cumulative total, until 5 years of data are collected.

SUMMARY OF REPORTED CASES OF INFECTIOUS SYPHILIS

CASES OF PRIMARY AND SECONDARY SYPHILIS: By Reporting Areas October 1970 and October 1971 - Provisional Data

Reporting Area	October		Cumulative Jan. - Oct.		Reporting Area	October		Cumulative Jan. - Oct.	
	1971	1970	1971	1970		1971	1970	1971	1970
NEW ENGLAND.....	50	44	495	453	EAST SOUTH CENTRAL.....	151	71	1,062	653
Maine.....	3	1	12	12	Kentucky.....	34	25	279	181
New Hampshire.....	2	-	5	3	Tennessee.....	35	21	310	154
Vermont.....	-	-	5	2	Alabama.....	24	12	142	130
Massachusetts.....	21	31	251	249	Mississippi.....	58	13	331	188
Rhode Island.....	1	-	32	47	WEST SOUTH CENTRAL.....	297	381	3,039	3,338
Connecticut.....	23	12	190	140	Arkansas.....	14	33	205	250
MIDDLE ATLANTIC.....	459	515	4,799	4,620	Louisiana.....	71	77	630	646
Upstate New York.....	29	42	380	336	Oklahoma.....	8	17	85	95
New York City.....	346	341	3,283	3,264	Texas.....	204	254	2,119	2,347
Pa. (Excl. Phila.).....	16	16	123	131	MOUNTAIN.....	56	63	497	505
Philadelphia.....	13	16	186	170	Montana.....	-	-	-	6
New Jersey.....	55	100	827	719	Idaho.....	4	-	12	1
EAST NORTH CENTRAL.....	229	222	2,248	2,047	Wyoming.....	1	1	3	4
Ohio.....	30	33	397	303	Colorado.....	1	7	52	39
Indiana.....	33	36	285	360	New Mexico.....	19	20	132	107
Downstate Illinois.....	22	20	129	111	Arizona.....	21	12	186	191
Chicago.....	63	71	702	703	Utah.....	-	2	15	21
Michigan.....	77	55	684	493	Nevada.....	10	21	97	136
Wisconsin.....	4	7	51	77	PACIFIC.....	271	211	2,735	2,170
WEST NORTH CENTRAL.....	25	56	349	442	Washington.....	15	5	127	42
Minnesota.....	4	5	53	67	Oregon.....	1	1	12	23
Iowa.....	-	2	17	11	California.....	255	204	2,558	2,084
Missouri.....	16	41	102	249	Alaska.....	-	-	22	11
North Dakota.....	-	-	5	4	Hawaii.....	-	1	16	10
South Dakota.....	1	2	8	15	U. S. TOTAL.....	2,072	2,046	19,997	18,428
Nebraska.....	2	3	22	19	TERRITORIES.....	81	80	733	800
Kansas.....	2	3	42	77	Puerto Rico.....	79	75	707	771
SOUTH ATLANTIC.....	534	483	4,773	4,200	Virgin Islands.....	2	5	26	29
Delaware.....	5	13	31	103					
Maryland.....	50	31	502	350					
District of Columbia.....	54	67	512	486					
Virginia.....	21	44	283	241					
West Virginia.....	2	5	27	25					
North Carolina.....	36	21	359	377					
South Carolina.....	45	24	309	297					
Georgia.....	162	123	1,332	1,155					
Florida.....	159	155	1,418	1,166					

Note: Cumulative Totals include revised and delayed reports through previous months.

The Morbidity and Mortality Weekly Report, circulation 25,500, is published by the Center for Disease Control, Atlanta, Ga.

Director, Center for Disease Control
Director, Epidemiology Program, CDC
Editor, MMWR
Managing Editor

David J. Sencer, M.D.
Philip S. Brachman, M.D.
Michael B. Gregg, M.D.
Susan J. Dillon

The data in this report are provisional, based on weekly telegraphs to CDC by state health departments. The reporting week concludes at close of business on Friday; compiled data on a national basis are officially released to the public on the succeeding Friday.

In addition to the established procedures for reporting morbidity and mortality, the editor welcomes accounts of interesting outbreaks or case investigations of current interest to health officials.

Address all correspondence to: Center for Disease Control
Attn: Editor
Morbidity and Mortality Weekly Report
Atlanta, Georgia 30333

DHEW Publication No. (HSM) 72-8017

U.S. DEPARTMENT OF HEALTH, EDUCATION, AND WELFARE
PUBLIC HEALTH SERVICE
HEALTH SERVICES AND MENTAL HEALTH ADMINISTRATION
CENTER FOR DISEASE CONTROL
ATLANTA, GEORGIA 30333

OFFICIAL BUSINESS

POSTAGE AND FEES PAID
U.S. DEPARTMENT OF HEW



3-G-19-08
Mrs Mary F Jackson, Library
Center for Disease Control