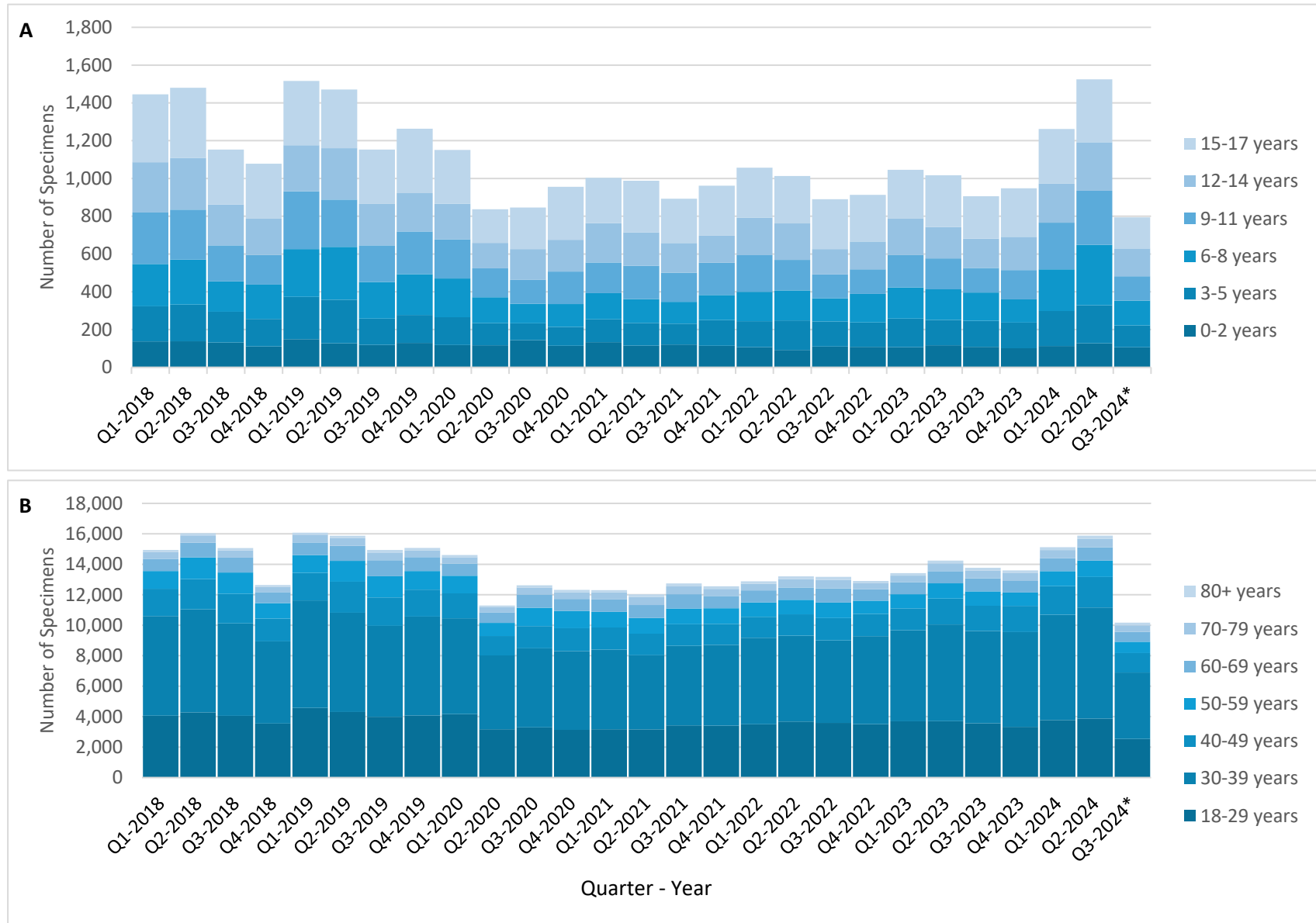


SUPPLEMENTARY FIGURE 1. Quarterly number of serum parvovirus B19 IgM tests performed\* in children and adolescents aged <18 years (A) and adults aged ≥18 years (B), by age group and quarter† — United States, 2018–2024§



**Abbreviation:** Q = quarter

\* Note: scales on y-axis are different in Panel A and Panel B

†Q1 = January–March; Q2 = April–June; Q3 = July–September; Q4 = October–December.

§Data for 2024 are through August 31.