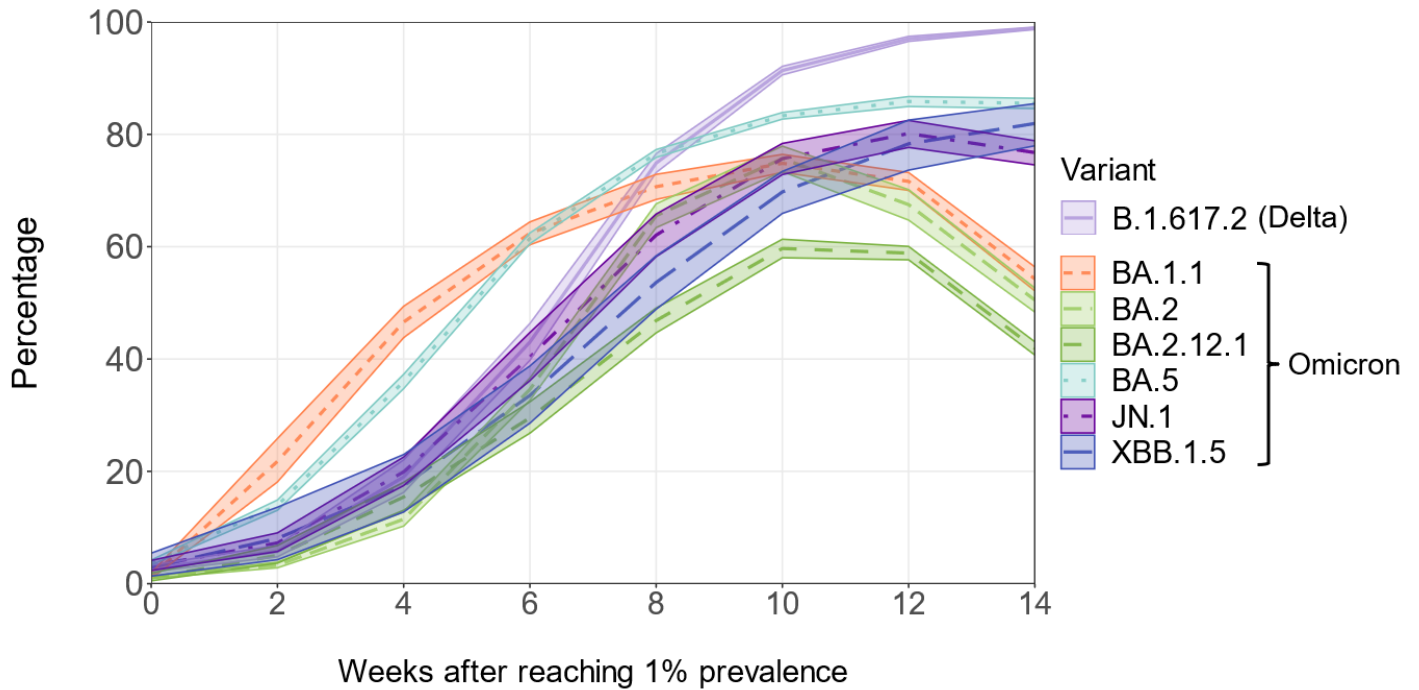


SUPPLEMENTARY FIGURE 3. Estimated variant proportions with 95% confidence intervals* during the first 14 weeks of each variant’s emergence (from the time of exceeding 1% of national circulating viruses) for SARS-CoV-2 variants reaching predominance (>50% prevalence)[†] — United States, June 2021–September 2024



Abbreviations: NS3 = National SARS-CoV-2 Strain Surveillance program; PANGO = Phylogenetic Assignment of Named Global Outbreak.

* 95% CIs for estimates are shown by shaded areas. Sequences are reported to CDC through NS3, contract laboratories, public health laboratories, and other U.S. institutions. The methods for estimating variant proportions and 95% CIs use a complex survey design and statistical weights to account for the probability that a specimen is sequenced.

[†] SARS-CoV-2 PANGO lineages reaching predominance during this time frame included B.1.617.2 (Delta), BA.1.1, BA.2, BA.2.12.1, BA.5, XBB.1.5, and JN.1.