

NORTH CAROLINA

Heart Disease and Federally Qualified Health Centers BY CONGRESSIONAL DISTRICT & COUNTY

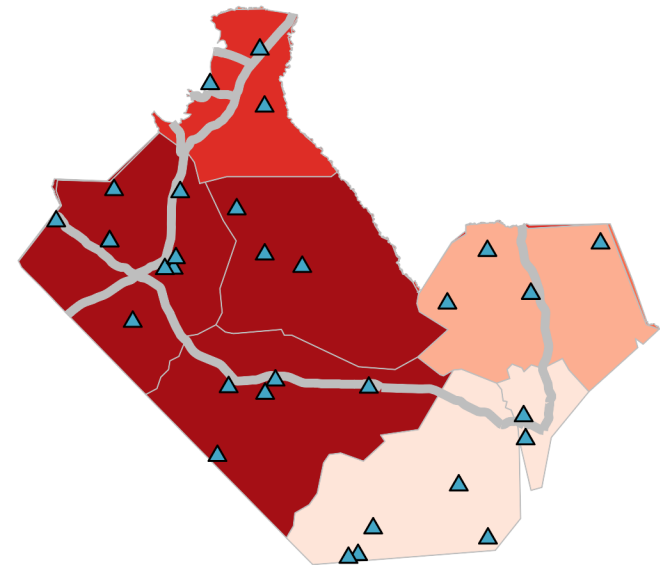
Heart disease death rates can differ considerably within a congressional district.

These maps highlight the disparities in county-level heart disease death rates within your congressional district.

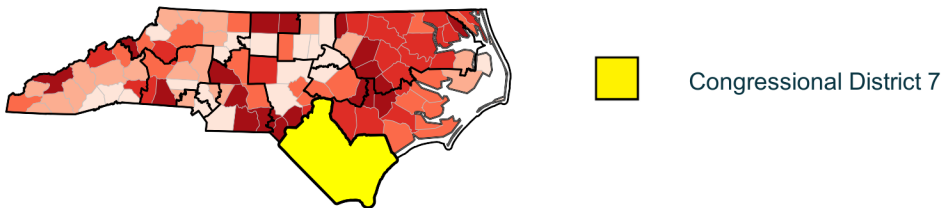
DISTRICT 7

Heart Disease Death Rate

By county, per 100,000 persons
Ages 35 years and older, 2019 - 2021



Heart Disease Death Rate | North Carolina
343 per 100,000 persons



*Congressional district boundaries do not align with county boundaries. Therefore, some counties may be partially included in this district.



FOR MORE MAPS
Visit CDC's Atlas of
Heart Disease and Stroke



NORTH CAROLINA

Frequently Asked Questions
**Map of Heart Disease and
Federally Qualified Health Centers**
BY CONGRESSIONAL DISTRICT & COUNTY

Congressional Districts

Which congressional boundaries are used to define the Congressional Districts on the map?

The Congressional Districts represent the 118th Congress of the United States. These congressional boundaries are in effect from January 2023 until the new congress begins.

Federally Qualified Health Centers (FQHCs)

Community-based outpatient clinics providing access to health and wellness services to areas or populations that lack access to primary care.

Where did we obtain FQHC data?

We accessed FQHC data from the Health Resource and Service Administration (HRSA). We included FQHCs that met the following criteria: a) Service delivery site = 'Hospital' or 'All Other Clinic Types', b) Active status as of the date data were downloaded, c) Location = 'Permanent', d) Health center type = 'Service Delivery Site' or Administrative/Service Delivery Site'.

Heart Disease and Stroke Death Rates

What is the geographic unit for Heart Disease and Stroke death rates on this map?

Death rates are mapped for the counties within each congressional district. When county boundaries overlap congressional districts, any portion outside the boundary of the congressional district is not displayed.

How are the Heart Disease and Stroke death rates calculated?

For each county, death rates are calculated per 100,000 adults, ages 35 and older, averaged over 3 years (2018-2020) and displayed by quintile. For more details, see CDC's Atlas of Heart Disease and Stroke

Map Description: North Carolina Congressional District 7

The map for Congressional District 7 in North Carolina shows that heart disease death rates (ages 35+, 2019 - 2021) for counties (or partial counties) in the district range from 251.2 - 465.6 per 100,000. For North Carolina and the United States, heart disease death rates are 343 and 364 per 100,000, respectively. There are a total of 32 Federally Qualified Health Centers in District 7.

