

# MARYLAND

## Heart Disease and Federally Qualified Health Centers BY CONGRESSIONAL DISTRICT & COUNTY

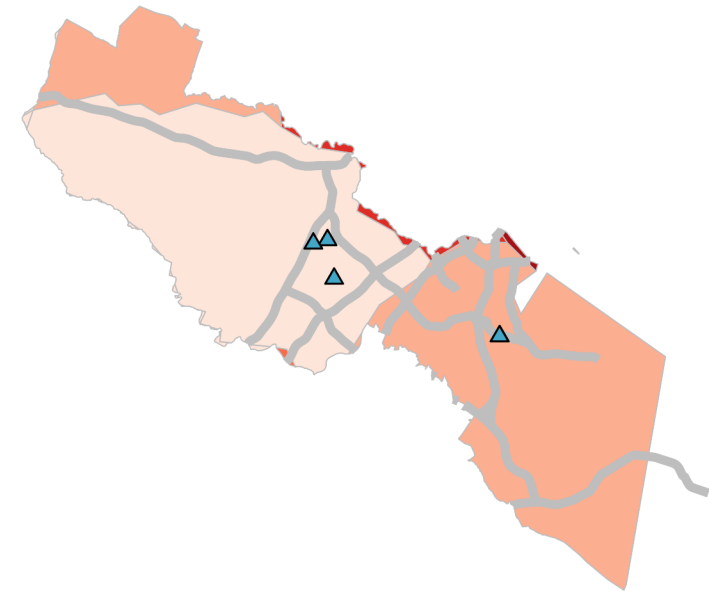
Heart disease death rates can differ considerably within a congressional district.

These maps highlight the disparities in county-level heart disease death rates within your congressional district.

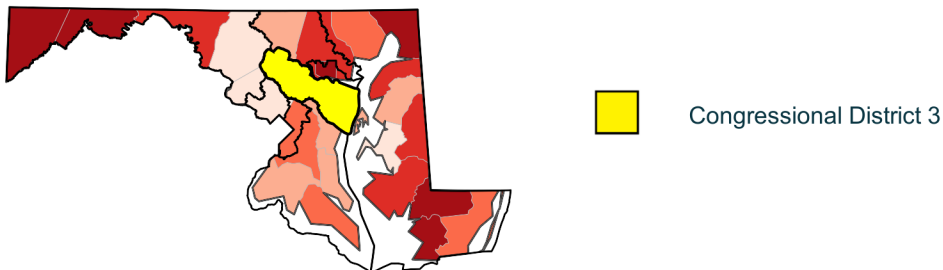
### DISTRICT 3

#### Heart Disease Death Rate

By county, per 100,000 persons  
Ages 35 years and older, 2019 - 2021



#### Heart Disease Death Rate | Maryland 357 per 100,000 persons



\*Congressional district boundaries do not align with county boundaries. Therefore, some counties may be partially included in this district.



**FOR MORE MAPS**  
Visit CDC's Atlas of Heart Disease and Stroke



# MARYLAND

## Frequently Asked Questions Map of Heart Disease and Federally Qualified Health Centers BY CONGRESSIONAL DISTRICT & COUNTY

### Congressional Districts

#### Which congressional boundaries are used to define the Congressional Districts on the map?

The Congressional Districts represent the 118th Congress of the United States. These congressional boundaries are in effect from January 2023 until the new congress begins.

### Federally Qualified Health Centers (FQHCs)

Community-based outpatient clinics providing access to health and wellness services to areas or populations that lack access to primary care.

#### Where did we obtain FQHC data?

We accessed FQHC data from the Health Resource and Service Administration (HRSA). We included FQHCs that met the following criteria: a) Service delivery site = 'Hospital' or 'All Other Clinic Types', b) Active status as of the date data were downloaded, c) Location = 'Permanent', d) Health center type = 'Service Delivery Site' or Administrative/Service Delivery Site'.

### Heart Disease and Stroke Death Rates

#### What is the geographic unit for Heart Disease and Stroke death rates on this map?

Death rates are mapped for the counties within each congressional district. When county boundaries overlap congressional districts, any portion outside the boundary of the congressional district is not displayed.

#### How are the Heart Disease and Stroke death rates calculated?

For each county, death rates are calculated per 100,000 adults, ages 35 and older, averaged over 3 years (2018-2020) and displayed by quintile. For more details, see CDC's Atlas of Heart Disease and Stroke

---

### Map Description: Maryland Congressional District 3

The map for Congressional District 3 in Maryland shows that heart disease death rates (ages 35+, 2019 - 2021) for counties (or partial counties) in the district range from 189.7 - 452.3 per 100,000. For Maryland and the United States, heart disease death rates are 357 and 364 per 100,000, respectively. There are a total of 5 Federally Qualified Health Centers in District 3.

