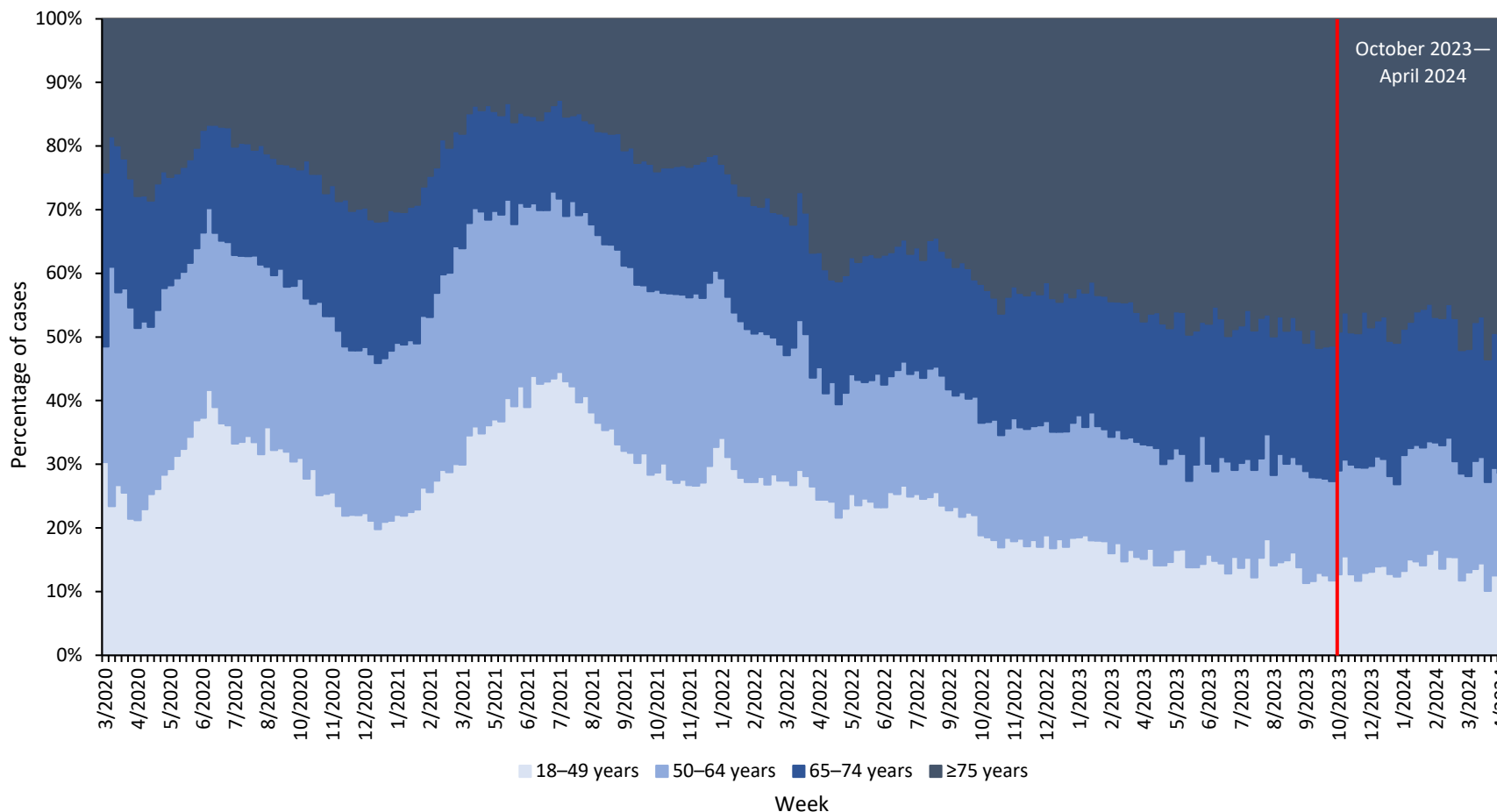


SUPPLEMENTARY FIGURE 1. Percentage of COVID-19–associated hospitalizations* among adults aged ≥18 years, by week and age group — COVID-NET, 12 states, † March 1, 2020–April 27, 2024

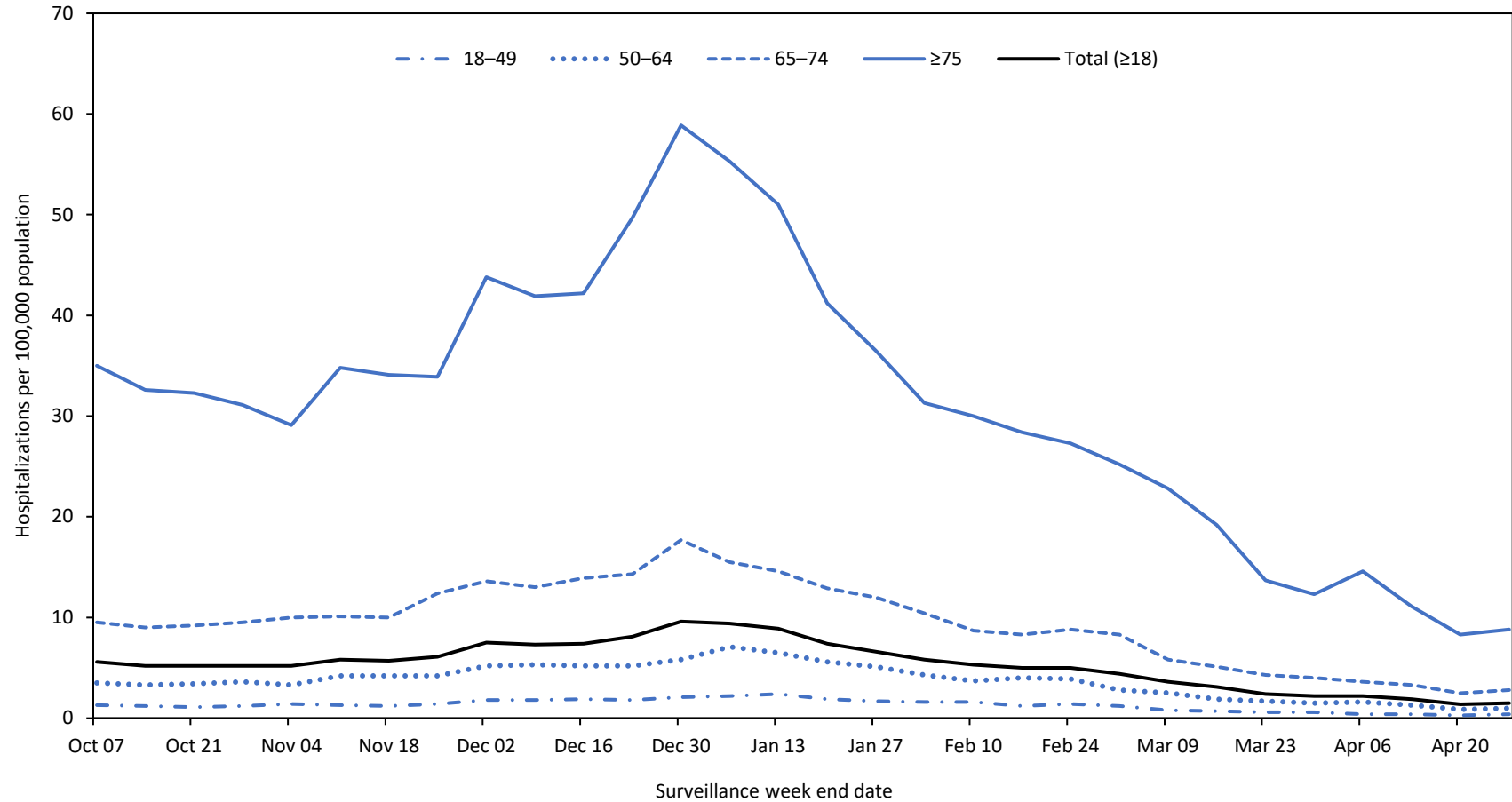


Abbreviation: COVID-NET = COVID-19–Associated Hospitalization Surveillance Network.

* COVID-19–associated hospitalizations among patients who received a positive SARS-CoV-2 test result during hospitalization or ≤14 days before admission.

† Selected counties in California, Colorado, Connecticut, Georgia, Maryland, Michigan, Minnesota, New Mexico, New York, Oregon, Tennessee, and Utah.

SUPPLEMENTARY FIGURE 2. Weekly COVID-19–associated hospitalization* rates among adults aged ≥18 years, by age group — COVID-19–Associated Hospitalization Surveillance Network, 12 states,† October 1, 2023–April 27, 2024



Abbreviation: COVID-NET = COVID-19–Associated Hospitalization Surveillance Network.

* COVID-19–associated hospitalizations among patients who received a positive SARS-CoV-2 test result during hospitalization or ≤14 days before admission.

† Selected counties in California, Colorado, Connecticut, Georgia, Maryland, Michigan, Minnesota, New Mexico, New York, Oregon, Tennessee, and Utah.