



Published in final edited form as:

*J Occup Environ Med.* 2024 September 01; 66(9): e418–e422. doi:10.1097/JOM.0000000000003172.

## Wildland firefighter work history and clinical indicators of cardiovascular health

Md. Zahid Hasan, MS<sup>1</sup>, Erin O. Semmens, PhD<sup>1</sup>, Kathleen Navarro DuBose, PhD<sup>2</sup>, L. Kaili McCray, PhD<sup>2</sup>, Curtis W. Noonan, PhD<sup>1,\*</sup>

<sup>1</sup>Center for Population Health Research, School of Public and Community Health Sciences  
University of Montana, Missoula, MT, USA

<sup>2</sup>Office of Wildland Fire, Department of the Interior, Boise, ID, USA

### Abstract

**Objective:** To determine the association between the occupational history as a wildland firefighter (WFF) and clinical indicators of cardiovascular health.

**Methods:** Among 2,862 WFFs we evaluated associations between the number of total days assigned on fire and high-risk categories of three clinically measured cardiovascular indicators.

**Results:** Almost one-third (32%) of WFFs had one or more clinical measures that would place them in high-risk categories for BMI, blood pressure, and total cholesterol. WFF work history was associated with some of these measures: odds ratio (and 95% confidence interval) for highest versus lowest tertile of days on fire were 1.4 (1.2, 1.8) and 1.2 (1.0, 1.5) for high-risk categories of BMI and cholesterol, respectively.

**Conclusion:** More frequent screening and targeted health promotion programs for WFFs are warranted to increase awareness of cardiovascular risk and prevention strategies.

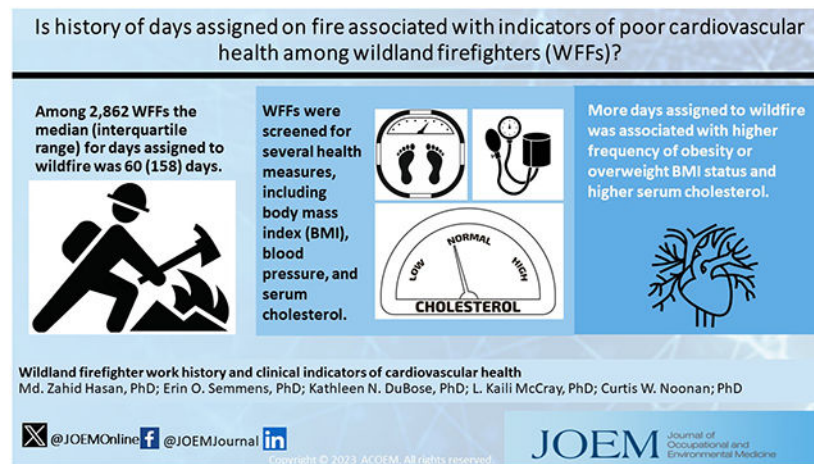
### Graphical Abstract

\*Corresponding author: Curtis W. Noonan, Center for Population Health Research, University of Montana, Missoula, MT 59812; [curtis.noonan@umontana.edu](mailto:curtis.noonan@umontana.edu).

**Conflict of interest:** None declared

**Disclaimer:** The findings and conclusions in this report are those of the author(s) and should not be construed to represent any official Department of the Interior or US Government determination or policy.

**Ethical Considerations:** This study was approved by the University of Montana IRB (#132-17).



## Keywords

Wildland firefighters (WFFs); body mass index (BMI); cholesterol; blood pressure; occupational history

## INTRODUCTION

In 2021, wildland firefighters (WFFs) were deployed to wildfires that burned approximately 10 million acres of land across the United States (US) to perform fire suppression duties.<sup>1</sup> Work conditions are often arduous, requiring that WFFs be physically fit, strong, and in good cardiovascular health.<sup>2-3</sup> These work conditions involve exposure to different environmental factors such as ambient temperature, toxic gases that negatively impact cardiorespiratory health of WFFs.<sup>4-7</sup> The increasing trend of very large wildfires and longer fire seasons across the United States<sup>8</sup> implies that WFFs will continue to face exposure to health hazards on the job.

Through work tasks regularly performed on wildfires, WFFs are directly exposed to health hazards such as smoke exposure, heat exposure, and high demand of physical labor or arduous duty. Each of these factors could acutely (i.e., during or shortly after the wildfire event) increase risk of a cardiovascular event, among the leading cause of WFF fatalities.<sup>29</sup> In contrast, an occupation with high physical demand such as wildland firefighting should translate to lower risk of lifetime cardiovascular disease.<sup>9,17</sup> Several studies have documented specific air pollutant exposures among WFFs actively engaged in fire suppression activities, including fine particulate matter (PM<sub>2.5</sub>),<sup>10</sup> polycyclic aromatic hydrocarbons (PAH),<sup>11</sup> carbon monoxide (CO),<sup>12</sup> and volatile organic compounds.<sup>13</sup> Although WFF smoke exposure is known to be hazardous, the impact of long-term, repeated exposures on WFF health is not well studied. Recent research by Navarro et al.<sup>14</sup> estimated increased risk of lung cancer and lifetime cardiovascular disease mortality among WFFs based on cumulative PM<sub>2.5</sub> exposure estimates across working years and relative risk estimates from population-based epidemiological studies. However, very few studies with direct clinical measures have explored the long-term cardiovascular health impacts of wildland firefighting.

Notably, while many of the respiratory health risks to WFFs have been documented cross-sectionally, the relationship between the length of a WFF's career fighting fires and impacts on cardiovascular health have not been well-studied. To understand the possible effect of time spent as a WFF and cardiovascular health we evaluated associations between the number of total days assigned on fire and three clinically measured cardiovascular indicators (body mass index (BMI), total cholesterol, and systolic and diastolic blood pressure). Here, we hypothesize that greater number of days assigned to a wildfire will be associated with greater cardiovascular risk.

## METHODS

### Study population and study design.

This cross-sectional study followed the Strengthening the Reporting of Observational Studies in Epidemiology (STROBE) reporting guidelines (Supplemental Digital Content). There are two main data sources for this study: The Department of Interior Medical Standards Program (DOI MSP), and the Incident Qualification and Certification System (IQCS). One of the purposes of DOI MSP is to ensure that arduous duty WFFs (i.e., performing work in difficult environmental conditions over long shifts) are medically fit to perform their work.<sup>15</sup> Therefore, DOI MSP conducts a comprehensive medical screening of WFFs at entry and afterwards at three-year intervals. The DOI MSP exam includes tests for hearing, cardiovascular measures, vision, respiratory function, endocrine measures, some infectious diseases such as tuberculosis, and other important aspects of physical health. A standard protocol is followed at health facilities across the US contracted to conduct the DOI MSP screening examinations. Concurrent with these clinical assessments, the exam also records demographic characteristics such as age, sex, race, health history, and health behaviors such as smoking history.<sup>15</sup> We include here data from 11,051 WFFs between the ages of 17 and 65 years who had a DOI MSP screening examination conducted between 2014 and 2018.

Worker history was captured from the Incident Qualifications and Certification System (IQCS), an interagency information system that tracks responder incident qualifications for the federal partners of the National Wildfire Coordinating Group.<sup>16</sup> IQCS retains the occupational history of active WFFs including types of events to which WFFs are deployed, types of fuels of the events, qualification of WFFs (arduous duty or non-arduous duty positions), and operational period, or days assigned to those fire events.<sup>16</sup> We queried the IQCS system on December 1, 2020 for matches to WFFs that were part of the 2014-2018 MSP program. As the IQCS system only retains active WFFs, we only captured DOI MSP participants that were still active at the query date. From those data, for each WFF we calculated the number of total days assigned on fire for arduous duty (n=3,901; Figure 1). The IQCS occupational history records start in 2002, and each WFF's IQCS record was right-censored at the time of their MSP DOI exam. Among the 3901 WFFs, 1039 did not have working history before DOI MSP or were out of age range 17-65 years (Figure 1). After merging the two datasets 2,862 WFFs were retained for analysis.

### Health measures of interest.

There are eight commonly measured cardiovascular health indicators: BMI, total serum cholesterol, systolic and diastolic blood pressure, glucose level, diet, physical activity, nicotine exposure, and sleep health.<sup>17</sup> Diet, sleep health, and physical activity were not captured in the DOI MSP medical screening examinations. We present self-reported smoking exposure, but the primary measures of interest for this study were the objective clinical measures of body mass index (BMI), total serum cholesterol, and systolic and diastolic blood pressure as DOI MSP. High risk categories of BMI, cholesterol, and blood pressure are associated with decreased life-expectancy, and cardiovascular disease mortality and morbidity.<sup>18-20</sup> BMI was calculated from recorded height and weight of WFFs. Total cholesterol and blood pressure (systolic blood pressure (SBP), and diastolic blood pressure (DBP)) are clinically measured following laboratory procedures.<sup>15</sup> Data were screened for out of range values following Center for Disease Control and Prevention (CDC) guidelines.<sup>21-23</sup> The continuous clinical measures were also grouped into clinically relevant categories: obese ( $\geq 30 \text{ kg/m}^2$ ), overweight ( $25 \text{ to } 29.9 \text{ kg/m}^2$ ), and normal weight ( $< 25 \text{ kg/m}^2$ ) for BMI, hypercholesterolemia ( $\geq 240 \text{ mg/dL}$ ), borderline high ( $200\text{--}239 \text{ mg/dL}$ ), and normal cholesterol ( $< 200 \text{ mg/dL}$ ) based on cholesterol level, and hypertension (SBP  $\geq 140 \text{ mmHg}$  OR DBP  $\geq 90 \text{ mmHg}$ ), prehypertension (SBP  $120\text{--}139 \text{ mmHg}$  and/or DBP  $80\text{--}89 \text{ mmHg}$ ), normal blood pressure (SBP  $< 120 \text{ mmHg}$  and DBP  $< 80$ ) based on SBP, and DBP.<sup>24</sup>

### Statistical Analyses.

In descriptive analyses, we evaluated the distribution of age, sex, race, days on fire, and cardiovascular risk factors in the study sample. We evaluated the association between work history (days assigned on fire) and measures of cardiovascular health using linear regression for continuous outcomes and logistic regression for categorical outcomes. Continuous outcomes included BMI, total cholesterol, and blood pressure measures. Categorical outcomes were generated from these continuous measures as described above. We selected covariates for inclusion in analyses that were hypothesized to be related to both worker history and cardiovascular health. All data were analyzed using R Studio 4.1.0 and STATA 15.1 statistical software.

## RESULTS

We excluded out of range data according to Center for Disease Control and Prevention (CDC) guidelines (Laboratory Procedure Manual: Cholesterol, 2017; Anthropometry Procedures Manual, 2016; Blood Pressure Procedure Manual, 2019).<sup>21-23</sup> The acceptable ranges for height and weight were more than 0 to 107.1 inches (higher than 0 to 2.7 meter), 32-790 pounds (14.5-358.3 kg), respectively. The acceptable range for cholesterol was 5-1000 mg/dl. We accepted systolic blood pressure (SBP) where diastolic blood pressure (DBP) is available, or vice-versa, SBP is higher than DBP, both of the measures are more than 0, and SBP is less than or equal to 300. We also removed observations for both SBP and DBP when DBP was recorded as less than 40. Following these data cleaning steps, we retained 2680 BMI, 2790 cholesterol, 2778 SBP and 2778 DBP measures. Table 1 summarizes demographic characteristics for the 2862 WFFs with occupational history. The

majority of the WFFs were Non-Hispanic Caucasian (67%) with the second largest group reporting more than one race, Other (20.6%). The majority of WFFs were male (87%) and 17-29 years old (48.2%).

Table 2 shows that the median (IQR) BMI was 26.7 kg/m<sup>2</sup> (10 kg/m<sup>2</sup>). The median (IQR) cholesterol for WFFs was 180 mg/dl (46 mg/dl) which lies in the normal range of cholesterol. The median (IQR) systolic and diastolic blood pressure are 122 mmHg (16 mmHg), and 78 mmHg (12 mmHg) respectively. Table 2 also represents the numbers of WFFs (and corresponding percentages) that fall into clinical categories according to measures of BMI, cholesterol, and blood pressure. Approximately 65%, 29%, and 67% of WFFs were outside the normal range for BMI, total cholesterol, and blood pressure, respectively. When we consider the three clinical measures for obesity, hypercholesterolemia, and hypertension, 32% of WFFs had at-least one of the three cardiovascular risks (27.3% with one, 4.3% with two, and 0.5% with all three high risk measures). Tobacco smoking was reported by 18% of WFFs. However, we did not have the information of nicotine pouches and chew of smoking history among this worker population.

Table 3 shows the crude and adjusted odd ratios (OR) and 95% confidence intervals (95% CI) by tertile (T) of days on fire for non-normal versus normal categories of BMI, cholesterol, and blood pressure. The 2<sup>nd</sup> tertile (T2: OR = 1.3; 95% CI: 1.1, 1.7) and 3<sup>rd</sup> tertile (T3: OR = 1.4; 95% CI: 1.2, 1.8) relative to 1<sup>st</sup> tertile (T1) of days assigned to fire were associated with significantly increased odds of being obese or overweight. WFFs in the 3<sup>rd</sup> tertile of days assigned to fire relative to the 1<sup>st</sup> tertile were 1.2 (95% CI: 1.0, 1.5) times more likely to have hypercholesterolemia or borderline high cholesterol. We also conducted the linear regression analyses for cholesterol, which shows that the days assigned on fire of WFFs is significantly associated with cholesterol level. In analyses adjusted for age category, sex, and race, the cholesterol level increases 0.016 mg/dl (95% CI: 0.006, 0.026 mg/dl) per day increase of assigned on fire. Although the ORs were in the expected direction, logistic regression analyses of hypertension and prehypertension compared to normal blood pressure did not show significant associations with tertile of days assigned to fire.

## DISCUSSION

Demands on WFFs are intense and growing, yet the long-term impact of wildland firefighting on worker health is unclear. Although many studies explore the acute health effects of wildland firefighting (such as the effect of PM<sub>2.5</sub> exposure and impacts on acute respiratory health), very few studies explore the effect of WFF days assigned to arduous work over multiple years on cardiovascular health. The study conducted by Navarro et al.<sup>14</sup> was among the first attempt to explore the effect of long-term PM<sub>2.5</sub> exposure on WFF cardiovascular health, projecting cumulative risk using an exposure-response relationship from the epidemiological literature. In our previous study, we investigated the status of subclinical measures of cardiovascular health of WFFs by comparing those measures with the US general population. We found that there were higher frequencies of WFFs with indication of hypertensive and prehypertensive status compared to the US general population.<sup>25</sup> To further investigate this association, we explored the association between

WFF days assigned on fire for arduous work and clinical measures related to cardiovascular health. We hypothesized that cumulative days in arduous duty work would be associated with markers of cardiovascular health. Our analysis shows that some, but not all, indicators of cardiovascular risk were associated with WFF worker history. BMI and cholesterol level of WFFs were significantly associated with WFF days assigned on fire, adjusting for age, sex, and race. Hypertension and prehypertension are not associated with days assigned on fire for WFFs.

Our finding, that cholesterol level of WFFs is significantly associated with days assigned on fire is supported by prior studies that found WFF's cholesterol levels were significantly higher after wildfire season due to deterioration of lipid metabolism.<sup>26, 27</sup> When deterioration of lipid metabolism occurs, it accelerates the restoration of lipids in the body, resulting in increased storage of fat in the body. Investigators noted that WFF total body fat increased after wildfire season.<sup>26</sup> Notably, BMI does not distinguish between percentage of muscle, fat and other body components, and it is possible that fat increases without gains in total body weight due to loss in mass of other components. Prospective investigation of changes in fat and body composition would help to clarify if this association between WFF history and BMI translates to cardiovascular risk.

Prior work by Semmens et al.<sup>28</sup> suggests that more years of experience as a WFF are associated with higher odds of self-reported hypertension and arrhythmia among WFFs. We did not see similar associations in our sample. However, although blood pressure was not associated with WFF arduous duty days assigned to fire, we did observe a high frequency of workers with indication of hypertension or prehypertension (67%).

Previous studies have demonstrated that the intensity of WFF seasonal work may affect their cardiovascular health, particularly that arduous work conditions may lead to elevated occurrence of cardiac arrest and stroke among WFFs when they are on-duty.<sup>29</sup> Heart attacks account for approximately 26% of WFF fatalities during or shortly after a wildfire event.<sup>29</sup> For longer-term outcomes we would anticipate that occupations with high physical activity demands align with guidance for protecting against adverse cardiovascular outcomes,<sup>17</sup> although some studies suggest that years-long engagement in physically demanding work may result in greater risk of developing coronary heart disease.<sup>30</sup> Other factors beyond physically intense work may influence WFF cardiovascular health and contribute to elevated rates of cardiac arrest and stroke. During the peak wildfire season, WFFs often engage in work at night and frequently have shift work which is associated with sleep disturbances, disruptions to the biological clock, less physical exercise, and higher body mass index.<sup>31</sup> Shift work and frequent calls from duty are also responsible for alteration of timing of eating behavior, meal skipping, and eating faster, possible factors that could impact overall diet and, subsequently, cardiovascular health.<sup>33-35</sup> A large portion of WFF's diet when on duty consists of fatty foods to fill the caloric demand of the physical work, thereby increasing cholesterol levels and cardiovascular risk.<sup>36</sup> In addition to these impacts on WFF work patterns and diet, WFFs are exposed to a variety of factors that have relevance to cardiovascular health. For example, wildfire smoke can be characterized by exposure to PM<sub>2.5</sub>, CO, and PAH that are known to be associated with a variety of effects



that impact cardiovascular risk, including inflammation, oxidative stress, dysrhythmia, and atherosclerosis.<sup>37-39</sup>

There are several limitations in this study. First, we do not have information of potentially important confounders, mediators, or effect modifiers, including diet, exercise, marital status, education, and household income. Second, we do not have any information on prescription or utilization of medications specific to cardiovascular disease or control of blood pressure or cholesterol. Third, we use days assigned to fire as indication of arduous duty activity, but we do not have access to actual job tasks that can vary considerably when engaging in firefighting duty. Fourth, we are not able to account for work experience prior to employment with DOI. These WFFs could have been employed by another agency prior to employment with DOI.

## CONCLUSION

Wildland firefighting is a highly demanding job that requires WFFs to be physically fit and in good cardiovascular health. In this study, we found significant associations between days assigned on fire for arduous duty and total cholesterol and obese/overweight status. Although we did observe an association between WFF work history and hypertension, we did observe high rates of hypertension and pre-hypertension among WFFs. This worker population could benefit from further monitoring of cardiovascular risk as well as programs to mitigate these risks. In addition, prospective studies of WFF cohorts would help to further elucidate modifiable individual- and workplace-level factors that influence cardiovascular risk.

## Supplementary Material

Refer to Web version on PubMed Central for supplementary material.

## Acknowledgments:

1. This study was supported by the federal grants noted above. 2. All authors contributed to manuscript writing. Study design was led by E.O.S., C.W.N. and M.Z.H. Primary data analysis was conducted by M.Z.H. 3. The data underlying this article will be shared on reasonable request to the corresponding author. 4. Reporting follows STROBE guidelines.

## Source of funding:

Support provided by the National Institute for Occupational Safety and Health (R21OH011385 to ES and CN) and National Institutes of Health, National Institute for General Medical Sciences (P20GM130418 to CN).

## REFERENCES

1. National Interagency Fire Center (2023). Total Wildland Fires and Acres. <https://www.nifc.gov/fire-information/statistics/wildfires>. Accessed February 14, 2024
2. Ruby BC, Shriver TC, Zderic TW, Sharkey BJ, Burks C, & Tysk S (2002). Total energy expenditure during arduous wildfire suppression. *Medicine and science in sports and exercise*, 34(6), 1048–1054. 10.1097/00005768-200206000-00023 [PubMed: 12048336]
3. Lovelace BA (2012). Evaluation of Physical Fitness Tests and the Usefulness of an Internal Crew Questionnaire to Predict Job Readiness in Hotshots Let us know how access to this document benefits you. Graduate Student Theses,

Dissertations, & Professional Papers. 400. <https://scholarworks.umt.edu/cgi/viewcontent.cgi?referer=&httpsredir=1&article=1419&context=etd>. Accessed February 13, 2024

4. Brook RD, Rajagopalan S Iii, P. CA, Brook JR, Bhatnagar A, Diez-roux AV, Holguin F, Hong Y, Luepker RV, Mittleman MA, Peters A, Siscovick D, Smith SC, Whitsel L, & Kaufman JD (2010). Particulate Matter Air Pollution and Cardiovascular Disease An Update to the Scientific Statement From the American. American Heart Association. 10.1161/CIR.0b013e3181dbee1
5. Pope C. Arden, Dockery DW (2012). Health Effects of Fine Particulate Air Pollution : Lines that Connect. Journal of the Air & Waste Management Association, 2247. 10.1080/10473289.2006.10464485
6. Ruby BC, Coker RH, Sol JA, Quindry JC, Montain SJ (2023). Physiology of the Wildland Firefighter : Managing Extreme Energy Demands in Physiology of the Wildland Firefighter : Managing Extreme Energy Demands in Hostile , Smoky , Mountainous Environments. Comprehensive Physiology, March. 10.1002/cphy.c220016
7. Rahn M, Broyles G, Mchale T, Brown C, Edwards T, & Hale K (2016). Wildland Firefighter Exposure Study: Evaluating Core Temperature, Heart Rate, and Hydration. Wildfire Research Report 5 – Summer 2016. <https://wildfirescience.org/wp-content/uploads/2018/09/2017WildlandResearchReport.pdf>. Accessed February 26, 2024
8. Salguero J, Li J, Farahmand A, & Reager JT (2020). Wildfire Trend Analysis over the Contiguous United States Using Remote Sensing Observations. Remote Sensing, 1–16. 10.3390/rs12162565
9. Myers J. (2003). Exercise and cardiovascular health. Circulation, 107(1), e2–e5. 10.1161/01.CIR.0000048890.59383.8D [PubMed: 12515760]
10. Adetona O, Reinhardt TE, Domitrovich J, Adetona AM, Kleinman MT, Ottmar RD, Luke P, Adetona O, Reinhardt TE, Domitrovich J, Broyles G, Adetona AM, Kleinman MT, Ottmar RD, & Naeher LP (2016). Review of the health effects of wildland fire smoke on wildland firefighters and the public Review of the health effects of wildland fire smoke on wildland firefighters and the public. Inhalation Toxicology, 8378. 10.3109/08958378.2016.1145771
11. Navarro KM, Cisneros R, Noth EM, Balmes JR, & Hammond SK (2017). Occupational Exposure to Polycyclic Aromatic Hydrocarbon of Wildland Fire fi ghters at Prescribed and Wildland Fires. Environmental Science and Technology. 10.1021/acs.est.7b00950
12. Semmens EO, Leary CS, West MR, Noonan CW, Navarro KM, & Domitrovich JW (2021). Carbon monoxide exposures in wildland firefighters in the United States and targets for exposure reduction. Journal of Exposure Science and Environmental Epidemiology, 31(5), 923–929. 10.1038/s41370-021-00371-z [PubMed: 34285366]
13. Navarro KM, West MR, Dell KO, Sen P, Chen I, Fischer EV, Hornbrook RS, Apel EC, Hills AJ, Jarrot A, Demott P, & Domitrovich JW (2021). Exposure to Particulate Matter and Estimation of Volatile Organic Compounds across Wildland Fire fi ghter Job Tasks. Environmental Science and Technology. 10.1021/acs.est.1c00847
14. Navarro KM, Kleinman MT, Mackay CE, Reinhardt TE, Balmes JR, Broyles GA, Ottmar RD, Naher LP, & Domitrovich JW (2019). Wildland firefighter smoke exposure and risk of lung cancer and cardiovascular disease mortality. Environmental Research, 173(November 2018), 462–468. 10.1016/j.envres.2019.03.060 [PubMed: 30981117]
15. U.S. Department of the Interior (2023). Federal Interagency Wildland Firefighters Medical Standard: Arduous Duty Wildland Firefighter. <https://www.doi.gov/sites/doi.gov/files/federal-interagency-wildland-firefighter-medical-standards-20150112.pdf>. Accessed October 30, 2023
16. Incident Qualification and Certification System. <https://iqcsweb.nwcg.gov/>. Accessed October 30, 2023
17. Lloyd-Jones DM, Allen NB, Anderson CAM, Black T, Brewer LC, Foraker RE, Grandner MA, Lavretsky H, Perak AM, Sharma G, & Rosamond W (2022). Life’s Essential 8: Updating and Enhancing the American Heart Association’s Construct of Cardiovascular Health: A Presidential Advisory from the American Heart Association. Circulation, 146(5), E18–E43. 10.1161/CIR.0000000000001078 [PubMed: 35766027]
18. Khan SS, Ning H, Wilkins JT, Allen N, Carnethon M, Berry JD, Sweis RN, & Lloyd-Jones DM (2018). Association of Body Mass Index With Lifetime Risk of Cardiovascular Disease and Compression of Morbidity. JAMA Cardiology, 3(4), 280–287. 10.1001/jamacardio.2018.0022 [PubMed: 29490333]



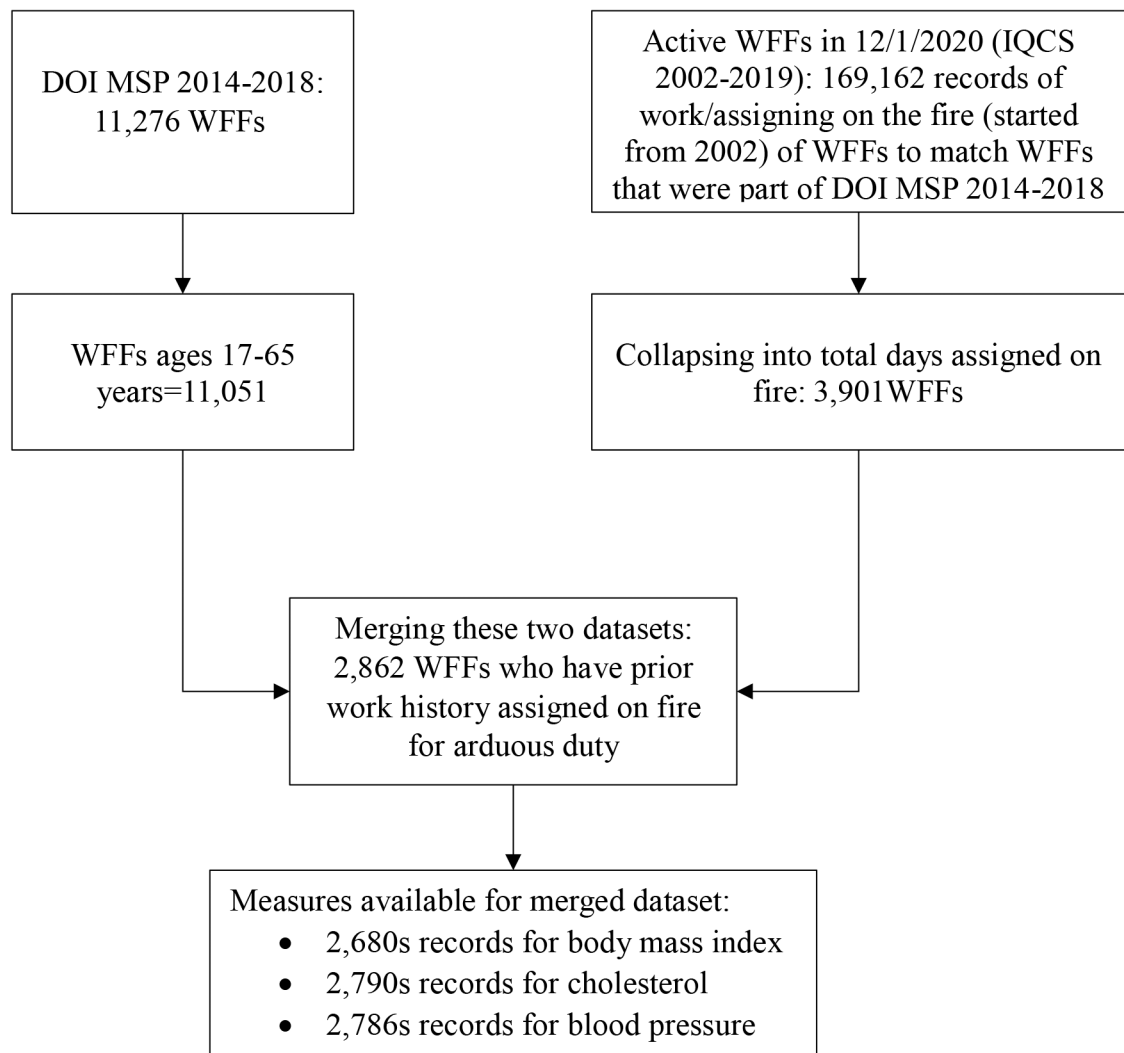
19. Jung E, Kong SY, Ro YS, Ryu HH, & Shin S. Do. (2022). Serum Cholesterol Levels and Risk of Cardiovascular Death: A Systematic Review and a Dose-Response Meta-Analysis of Prospective Cohort Studies. *International Journal of Environmental Research and Public Health*, 19(14). 10.3390/ijerph19148272
20. Fuchs FD, & Whelton PK (2020). High Blood Pressure and Cardiovascular Disease. *Hypertension* (Dallas, Tex. : 1979), 75(2), 285–292. 10.1161/HYPERTENSIONAHA.119.14240 [PubMed: 31865786]
21. Center for Disease Control and Prevention (2017). Laboratory Procedure Manual: Cholesterol. [https://wwwn.cdc.gov/nchs/data/nhanes/2015-2016/labmethods/BIOPRO\\_I\\_MET\\_CHOLESTEROL\\_DXC800and660i.pdf](https://wwwn.cdc.gov/nchs/data/nhanes/2015-2016/labmethods/BIOPRO_I_MET_CHOLESTEROL_DXC800and660i.pdf). Accessed July 21, 2023
22. Center for Disease Control and Prevention (2016). National Health and Nutrition Examination Survey (NHANES): Anthropometry Procedures Manual. [https://wwwn.cdc.gov/nchs/data/nhanes/2015-2016/manuals/2016\\_Anthropometry\\_Procedures\\_Manual.pdf](https://wwwn.cdc.gov/nchs/data/nhanes/2015-2016/manuals/2016_Anthropometry_Procedures_Manual.pdf). Accessed July 21, 2023
23. Center for Disease Control and Prevention (2019). National Health and Nutrition Examination Survey (NHANES): Blood Pressure Procedures Manual. June 2019. <https://wwwn.cdc.gov/nchs/data/nhanes/2019-2020/manuals/2019-Blood-Pressure-Procedures-Manual-508.pdf>
24. Lloyd-Jones DM, Hong Y, Labarthe D, Mozaffarian D, Appel LJ, Van Horn L, Greenlund K, Daniels S, Nichol G, Tomaselli GF, Arnett DK, Fonarow GC, Ho PM, Lauer MS, Masoudi FA, Robertson RM, Roger V, Schwamm LH, Sorlie P, ... Rosamond WD (2010). Defining and setting national goals for cardiovascular health promotion and disease reduction: The American heart association's strategic impact goal through 2020 and beyond. *American Heart Association*, 121(4), 586–613. 10.1161/CIRCULATIONAHA.109.192703
25. Hasan MZ, Semmens EO, Dubose KN, Mccray LK, Noonan CW, & Sciences CH (2024). Subclinical measures of cardiovascular health among wildland firefighters. *Journal of Occupational and Environmental Medicine*. 10.1097/JOM.0000000000003041
26. Coker RH, Murphy CJ, Johannsen M, Galvin G, & Ruby BC (2019). Wildland Firefighting: Adverse Influence on Indices of Metabolic and Cardiovascular Health. *Journal of Occupational and Environmental Medicine*, 61(3), E91–E94. 10.1097/JOM.0000000000001535 [PubMed: 30640843]
27. Rosales AM, Dodds PS, Hailes WS, Sol JA, Coker RH, Quindry JC, & Ruby BC (2022). Deterioration of Lipid Metabolism Despite Fitness Improvements in Wildland Firefighters. 64(5), 385–389. 10.1097/JOM.0000000000002446
28. Semmens EO, Domitrovich J, Conway K, & Noonan CW (2016). A cross-sectional survey of occupational history as a wildland firefighter and health. *American Journal of Industrial Medicine*, 59(4), 330–335. 10.1002/ajim.22566 [PubMed: 26792645]
29. Butler C, Marsh S, Domitrovich JW, & Helmkamp J (2017). Wildland firefighter deaths in the United States: A comparison of existing surveillance systems. *Journal of Occupational and Environmental Hygiene*, 14(4), 258–270. 10.1080/15459624.2016.1250004 [PubMed: 27754819]
30. Ilmarinen J. (1989). Work and cardiovascular health: Viewpoint of occupational physiology. *Annals of Medicine*, 21(3), 209–214. 10.3109/07853898909149935 [PubMed: 2788439]
31. Vincent GE, Aisbett B, Wolkow A, Jay SM, Ridgers ND, & Ferguson SA (2018). Sleep in wildland firefighters: What do we know and why does it matter? *International Journal of Wildland Fire*, 27(2), 73–84. 10.1071/WF17109
32. Atkinson G, Fullick S, Grindley C, & Maclaren D (2008). Exercise, energy balance and the shift worker. *Sports Medicine*, 38(8), 671–685. 10.2165/00007256-200838080-00005 [PubMed: 18620467]
33. Chen H, Zhang B, Ge Y, Shi H, Song S, Xue W, Li J, Fu K, chen X, Teng W, & Tian L (2020). Association between skipping breakfast and risk of cardiovascular disease and all cause mortality: A meta-analysis. *Clinical Nutrition*, 39(10), 2982–2988. 10.1016/j.clnu.2020.02.004 [PubMed: 32085933]
34. Copertaro A, & Bracci M (2019). Working against the biological clock: A review for the occupational physician. *Industrial Health*, 57(5), 557–569. 10.2486/indhealth.2018-0173 [PubMed: 30799323]

35. Dobson M, Choi B, Schnall PL, Wigger E, Garcia-Rivas J, Israel L, & Baker DB (2013). Exploring Occupational and Health Behavioral Causes of Firefighter Obesity: A Qualitative Study. *American Journal of Industrial Medicine*, 56(7), 776–790. 10.1002/ajim.22151 [PubMed: 23335437]
36. Marks AN, Sol JA, Domitrovich JW, West MR, & Ruby BC (2020). Total Energy Intake and Self-Selected Macronutrient Distribution During Wildland Fire Suppression. *Wilderness & Environmental Medicine*, 31(2), 188–196. 10.1016/j.wem.2020.01.009 [PubMed: 32359881]
37. Donaldson K, Mills N, MacNee W, Robinson S, & Newby D (2005). Role of inflammation in cardiopulmonary health effects of PM. *Toxicology and Applied Pharmacology*, 207(2 SUPPL.), 483–488. 10.1016/j.taap.2005.02.020 [PubMed: 15979665]
38. Van Eeden SF, & Sin DD (2008). Chronic obstructive pulmonary disease: a chronic systemic inflammatory disease. *Respiration; international review of thoracic diseases*, 75(2), 224–238. 10.1159/000111820 [PubMed: 18042978]
39. Zeigler Z, Sol J, Greer P, Verduzco L, Zeigler Z, Sol J, Greer P, & Verduzco L (2022). Archives of Environmental & Occupational Health Impact of wildland firefighting on arterial stiffness and cardiorespiratory fitness. *Archives of Environmental & Occupational Health*, 77(5), 415–422. 10.1080/19338244.2021.1917497 [PubMed: 33939591]

**Learning outcomes:**

After reading this article, the audience will be able to:

- Describe the prevalence of risk factors such as hypertension, hypercholesteremia, and obesity among wildland firefighters (WFFs).
- Evaluate the association between history of WFF days assigned to fire and clinical indicators of cardiovascular health.
- Understand the potential for cardiovascular health monitoring programs among WFFs to protect long-term health.



**Figure 1. Flow chart showing merge of datasets and final analytical sample.**

WFF = wildland firefighter; DOI MSP = US Department of Interior Medical Standards Program; IQCS = Incident Qualifications and Certification System (IQCS).

**Table 1:**

DOI WFF demographic characteristics and work history (N = 2,862).

Demographic characteristics	WFFs (n, %)
<b>Race</b>	
Non-Hispanic African	28 (1.0%)
Asian	20 (0.7%)
Non-Hispanic Caucasian	1,918 (67.0%)
Hispanic	151 (5.3%)
Not Recorded	157 (5.5%)
Others	588 (20.6%)
Total	2862 (100%)
<b>Sex</b>	
Female	172 (6.0%)
Male	2469 (86.3%)
Not Recorded	221 (7.7%)
Total	2862 (100%)
<b>Age</b>	
17-29 years	1,378 (48.2%)
30-39 years	1,087 (37.0%)
40-49 years	279 (9.8%)
50-64 years	118 (4.1%)
<b>Work History</b>	
Days on fire, median (IQR)	59.5 (158)
<b>Total</b>	2862 (100%)

**Table 2:**

WFF measures and cardiovascular-risk categories (N = 2,862).

Cardiovascular-risk categories	2,862 (%)	Minimum, Maximum
<b>BMI, median (IQR)</b>	26.7 kg/m <sup>2</sup> (10 kg/m <sup>2</sup> )	19.2, 48.5
Normal weight	935 (34.9)	
Overweight	1,085 (40.5)	
Obese	660 (24.6)	
<b>Cholesterol, median (IQR)</b>	180 mg/dl (46 mg/dl)	112, 486
Normal cholesterol	1,980 (71.0)	
Borderline high cholesterol	596 (21.3)	
Hypercholesterolemia	214 (7.7)	
<b>Blood Pressure</b>		
Systolic blood pressure, median (IQR)	122 mmHg (16 mmHg)	80, 201
Diastolic blood pressure, median (IQR)	78 mmHg (12 mmHg)	40, 149
Normal blood pressure	920 (33.1)	
Prehypertension	1,717 (61.8)	
Hypertension	141 (5.1)	
<b>Combined risk factors *</b>		
High risk category for one or more of the measures	819 (32.0)	
One high risk category	698 (27.2)	
Two high risk categories	109 (4.3)	
All three high risk categories	12 (0.5)	
<b>Self-reported smoking history</b>	260 (18.1)	

\* combinations of obesity, hypercholesterolemia, and/or hypertension.



**Table 3:**

Adjusted (by age category, sex, and race) ORs for high-risk categories of cardiovascular measures by tertile of occupational history.

	Adjusted OR with 95% CI
<b>BMI: obesity and overweight v normal weight</b>	
0 – 28 days assigned on fire (1 <sup>st</sup> tertile)	Ref.
29 – 122 days assigned on fire (2 <sup>nd</sup> tertile)	1.3 (1.3, 1.7)
123 + days assigned on fire (3 <sup>rd</sup> tertile)	1.4 (1.2, 1.8)
<b>Cholesterol: hypercholesterolemia and borderline high v normal cholesterol</b>	
Days assigned on fire (1 <sup>st</sup> tertile)	Ref.
Days assigned on fire (2 <sup>nd</sup> tertile)	1.1 (0.9, 1.3)
Days assigned on fire (3 <sup>rd</sup> tertile)	1.2 (1.0, 1.5)
<b>Blood Pressure: hypertension and prehypertension v normotensive</b>	
Days assigned on fire (1 <sup>st</sup> tertile)	Ref.
Days assigned on fire (2 <sup>nd</sup> tertile)	1.2 (1.0, 1.5)
Days assigned on fire (3 <sup>rd</sup> tertile)	1.1 (0.9, 1.3)