

Table of Contents: Supplemental Forest plots of meta-analyses on the associations between exposure to parental substance use and ADHD

Figure S1. Prenatal cannabis exposure and ADHD overall, continuous outcomes 3

Figure S2. Prenatal cannabis exposure and inattention, continuous outcomes..... 4

Figure S3. Prenatal cocaine exposure and ADHD overall, dichotomous outcomes 5

Figure S4. Prenatal cocaine exposure and ADHD overall, continuous outcomes 6

Figure S5. Prenatal cocaine exposure and inattention, continuous outcomes..... 7

Figure S6. Prenatal cocaine exposure and hyperactivity/impulsivity, continuous outcomes..... 8

Figure S7. Prenatal heroin exposure and ADHD overall, continuous outcomes 9

Figure S8. Prenatal general substance use exposure and ADHD overall, dichotomous outcomes 10

Figure S9. Prenatal general substance use exposure and ADHD diagnosis only, dichotomous outcomes 11

Figure S10. Prenatal alcohol exposure and ADHD overall, dichotomous outcomes..... .12

Figure S11. Prenatal alcohol exposure and ADHD diagnosis only, dichotomous outcomes..... 13

Figure S12. Prenatal alcohol exposure and inattention, dichotomous outcomes 14

Figure S13. Prenatal alcohol exposure and hyperactivity/impulsivity, dichotomous outcomes 15

Figure S14. Prenatal alcohol exposure and ADHD overall, continuous outcomes..... 16

Figure S15. Prenatal alcohol exposure and inattention, continuous outcomes 17

Figure S16. Prenatal alcohol exposure and hyperactivity/impulsivity, continuous outcomes 18

Figure S17. Prenatal tobacco exposure and ADHD overall, dichotomous outcomes 19

Figure S18. Prenatal tobacco exposure and ADHD diagnosis only, dichotomous outcomes..... 20

Figure S19. Prenatal tobacco exposure and ADHD overall, continuous outcomes..... 21

Figure S20. Prenatal tobacco exposure and hyperactivity/impulsivity, continuous outcomes 22

Figure S21. Postnatal tobacco exposure and ADHD overall, dichotomous outcomes 23

Figure S22. Postnatal tobacco exposure and ADHD diagnosis only, dichotomous outcomes 24

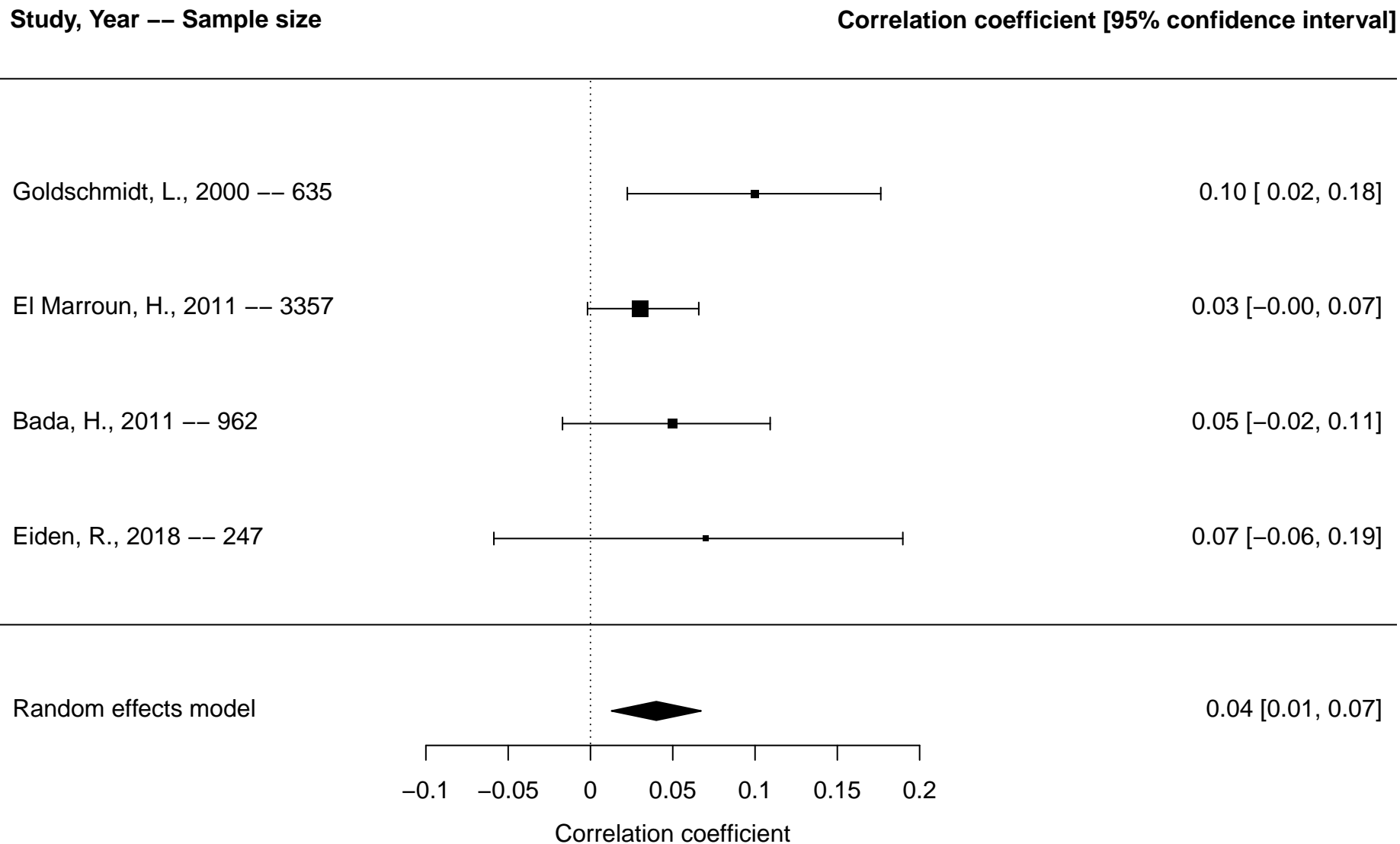
Figure S23. Postnatal tobacco exposure and ADHD overall, continuous outcomes 25

Figure S24. Postnatal tobacco exposure and inattention, continuous outcomes 26

Figure S25. Parental substance use disorders and ADHD overall, dichotomous outcomes 27

Figure S26. Parental substance use disorders and ADHD diagnosis only, dichotomous outcomes 28

Figure S1. Forest plot of prenatal cannabis exposure and attention-deficit/hyperactivity disorder (ADHD) overall* based on studies reporting continuous outcomes



*Overall includes studies reporting on any included ADHD outcomes (diagnosis, ADHD symptoms, inattention, hyperactivity/impulsivity)

Figure S2. Forest plot of prenatal cannabis exposure and inattention based on studies reporting continuous outcomes

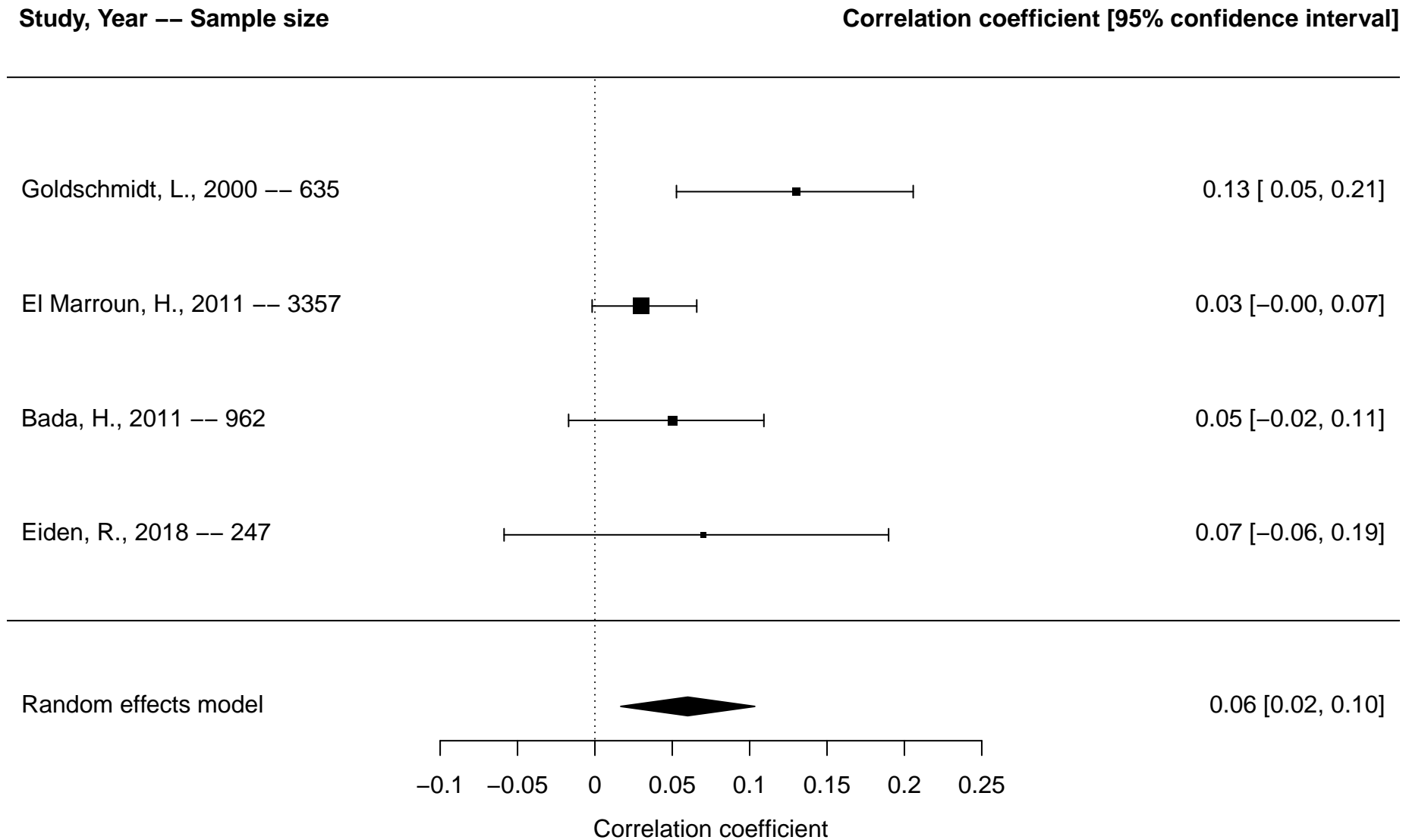
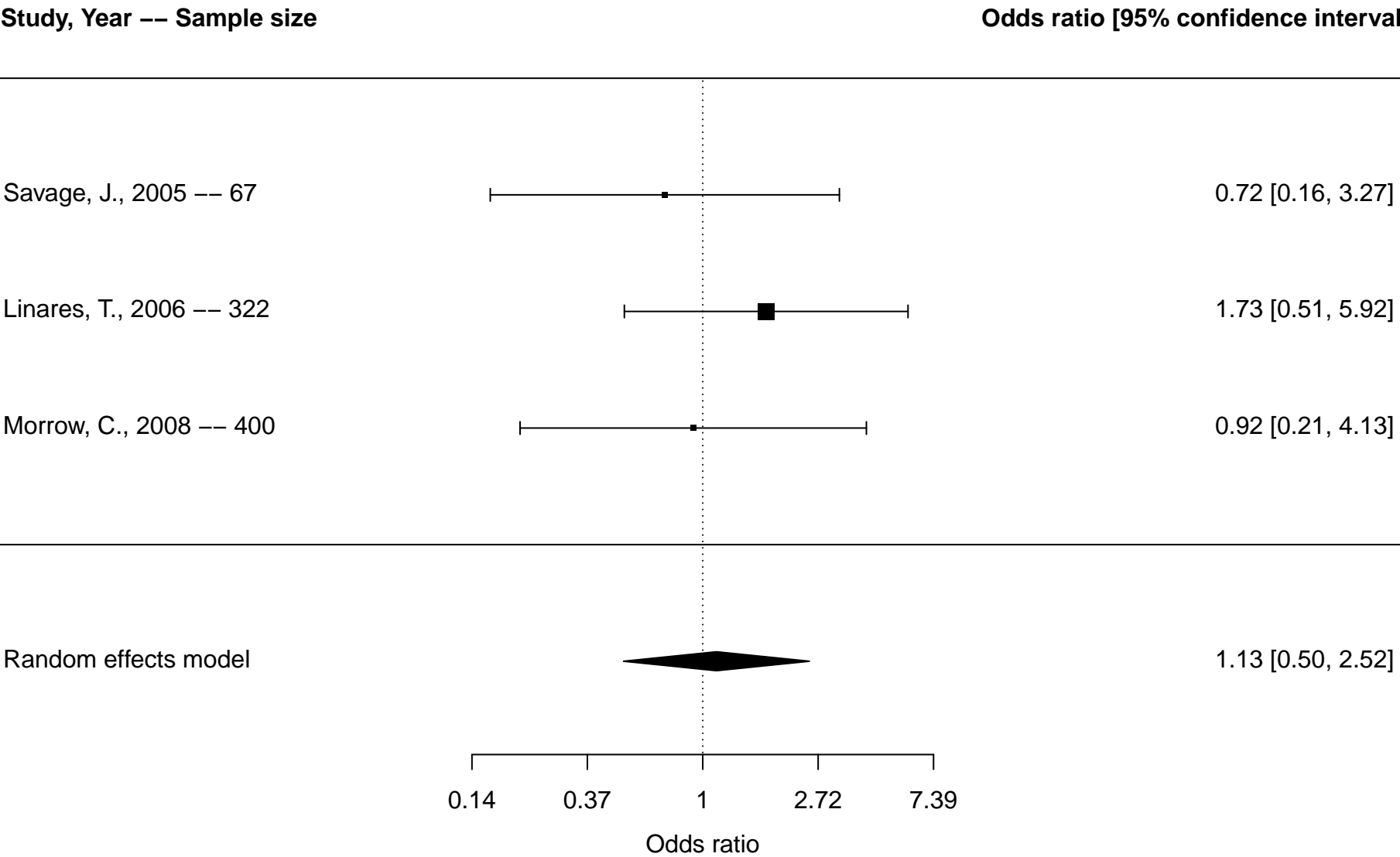
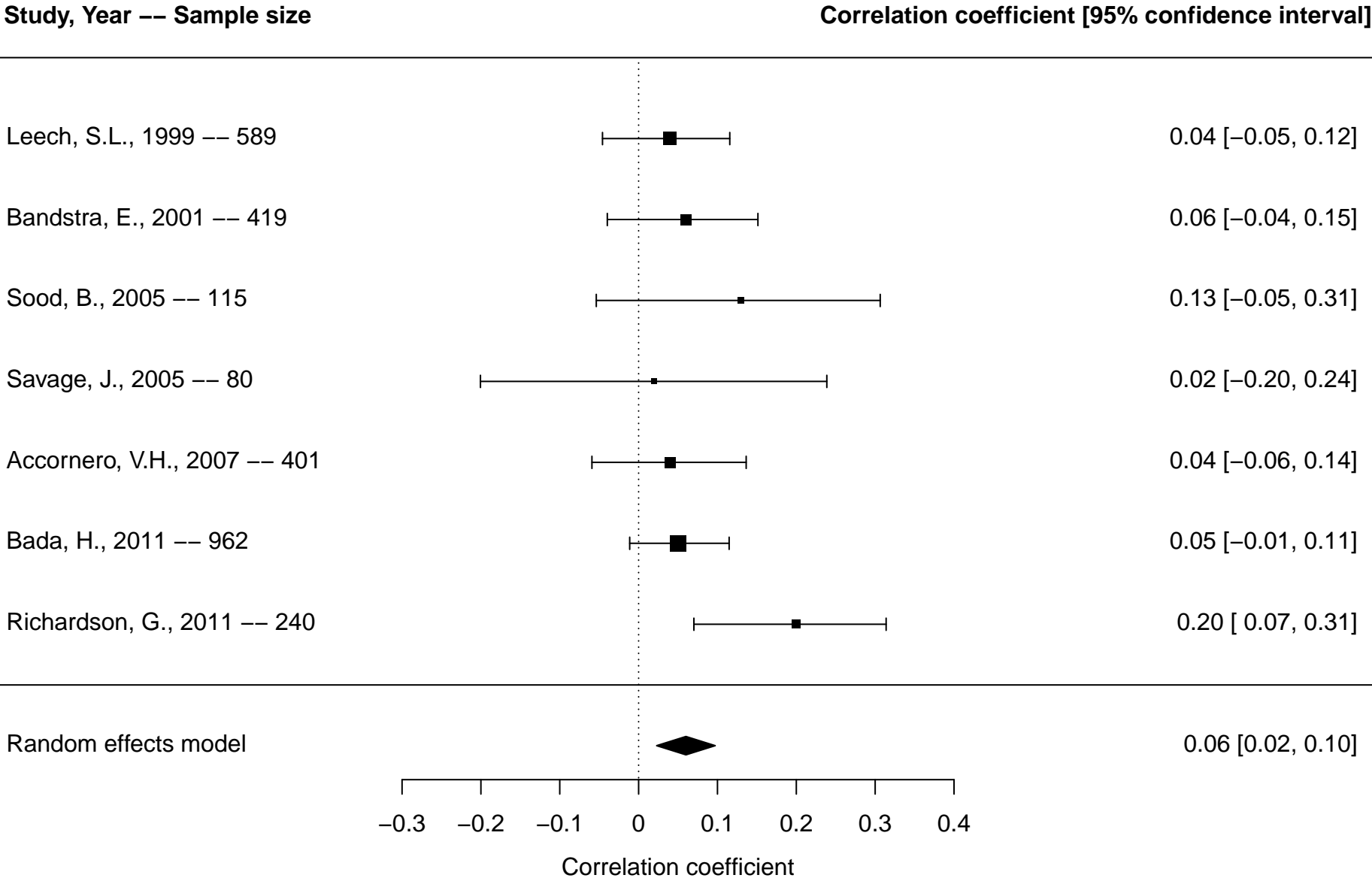


Figure S3. Forest plot of prenatal cocaine exposure and attention-deficit/hyperactivity disorder (ADHD) overall* based on studies reporting dichotomous outcome



*Overall includes studies reporting on any included ADHD outcomes (diagnosis, ADHD symptoms, inattention, hyperactivity/impulsivity)

Figure S4. Forest plot of prenatal cocaine exposure and attention-deficit/hyperactivity disorder (ADHD) overall* based on studies reporting continuous outcomes



*Overall includes studies reporting on any included ADHD outcomes (diagnosis, ADHD symptoms, inattention, hyperactivity/impulsivity)

Figure S5. Forest plot of prenatal cocaine exposure and inattention based on studies reporting continuous outcomes

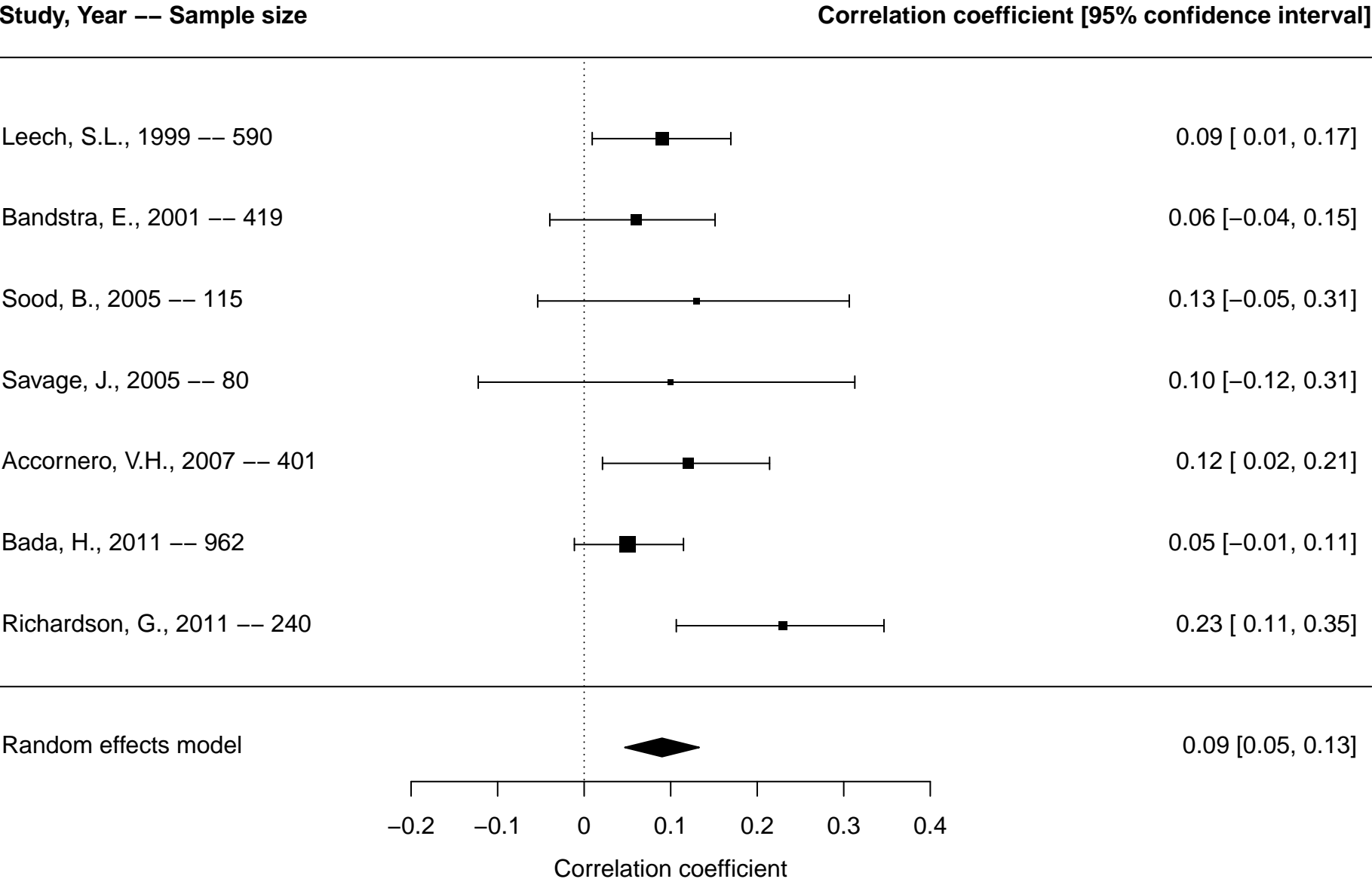


Figure S6. Forest plot of prenatal cocaine exposure and hyperactivity/impulsivity based on studies reporting continuous outcomes

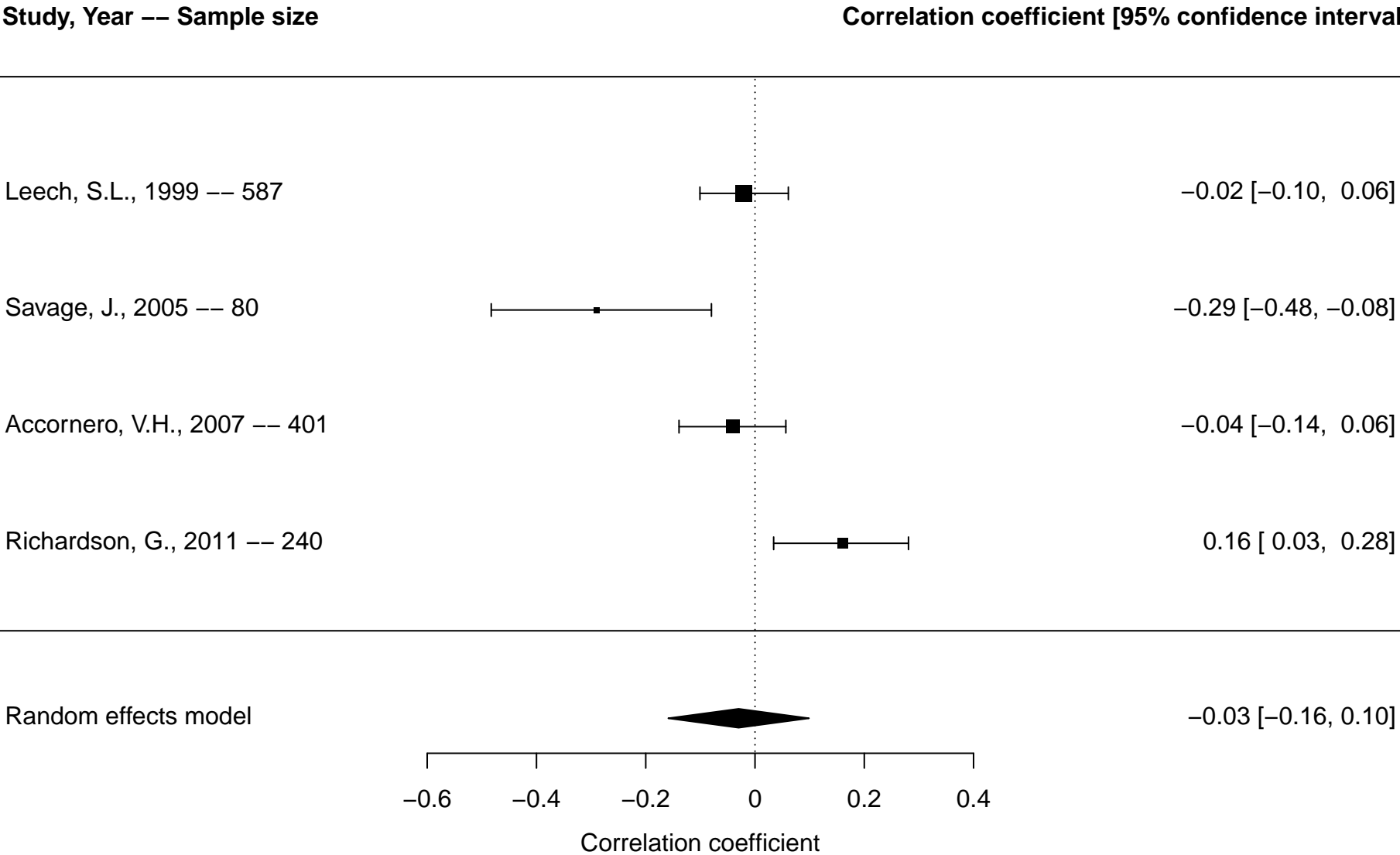
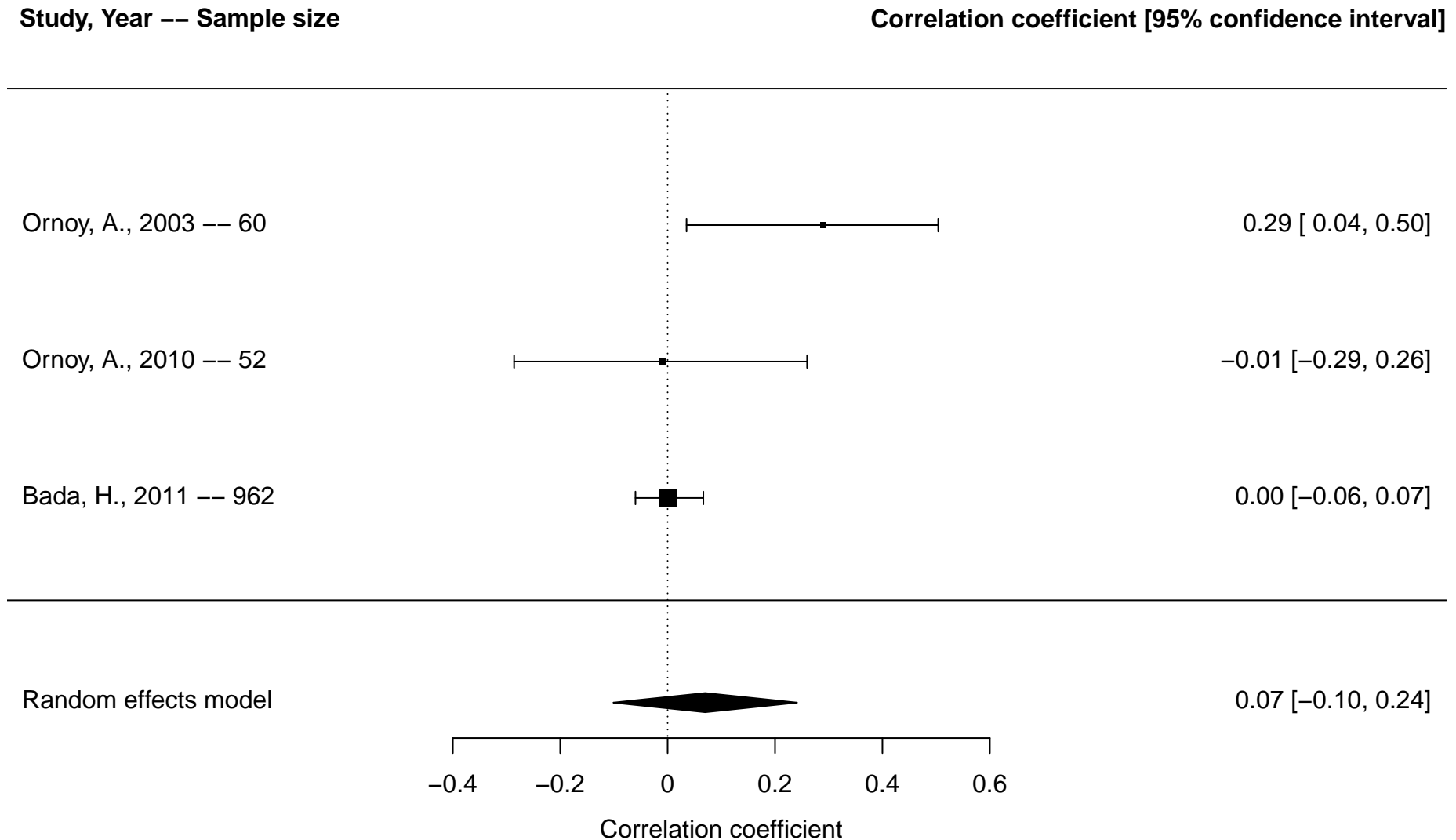
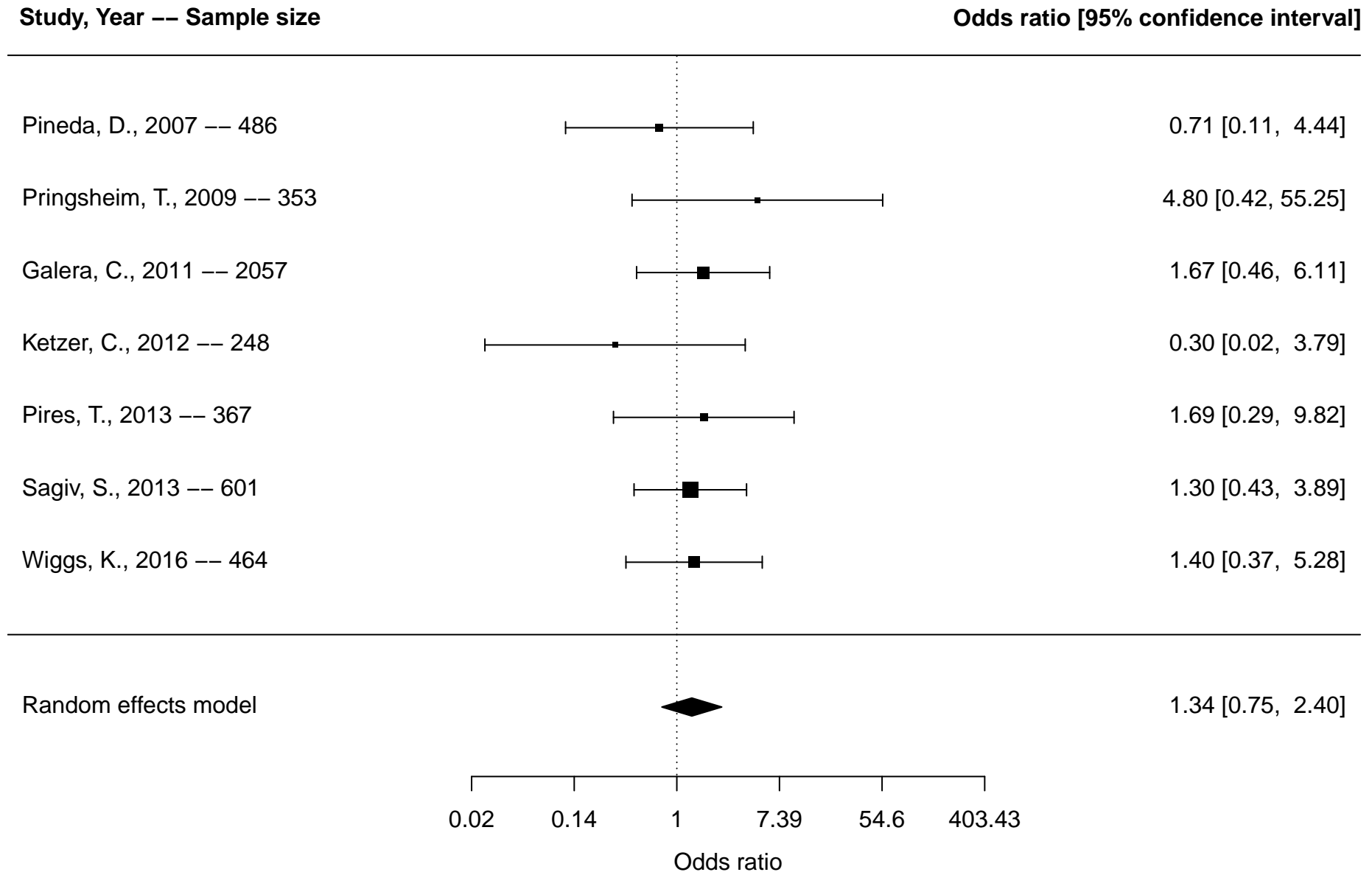


Figure S7. Forest plot of prenatal heroin exposure and attention-deficit/hyperactivity disorder (ADHD) overall* based on studies reporting continuous outcomes



*Overall includes studies reporting on any included ADHD outcomes (diagnosis, ADHD symptoms, inattention, hyperactivity/impulsivity)

Figure S8. Forest plot of prenatal general substance use exposure and attention-deficit/hyperactivity disorder (ADHD) overall* based on studies reporting dichotomous outcomes



*Overall includes studies reporting on any included ADHD outcomes (diagnosis, ADHD symptoms, inattention, hyperactivity/impulsivity)

Figure S9. Forest plot of prenatal general substance use exposure and ADHD diagnosis only based on studies reporting dichotomous outcomes

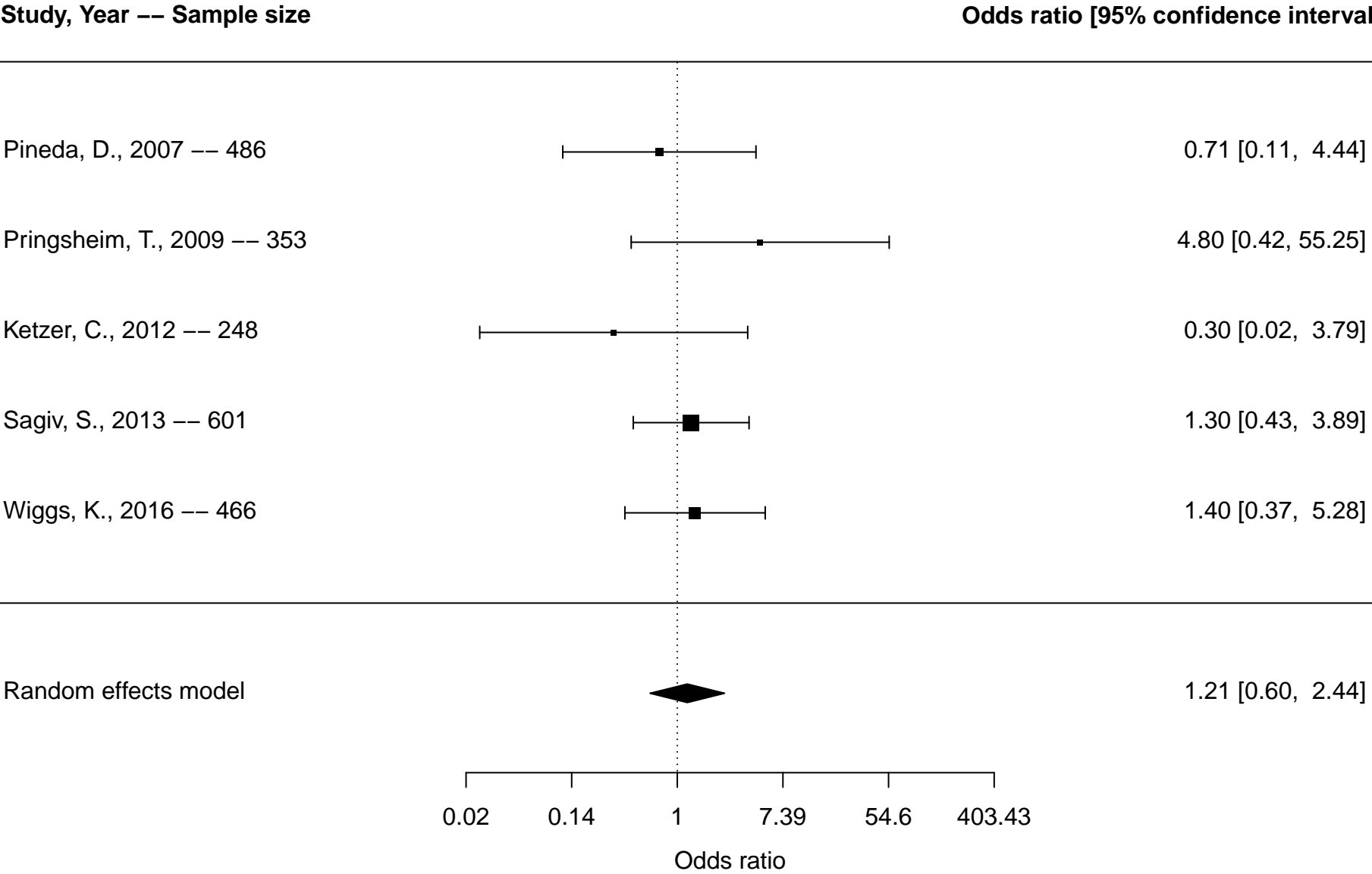
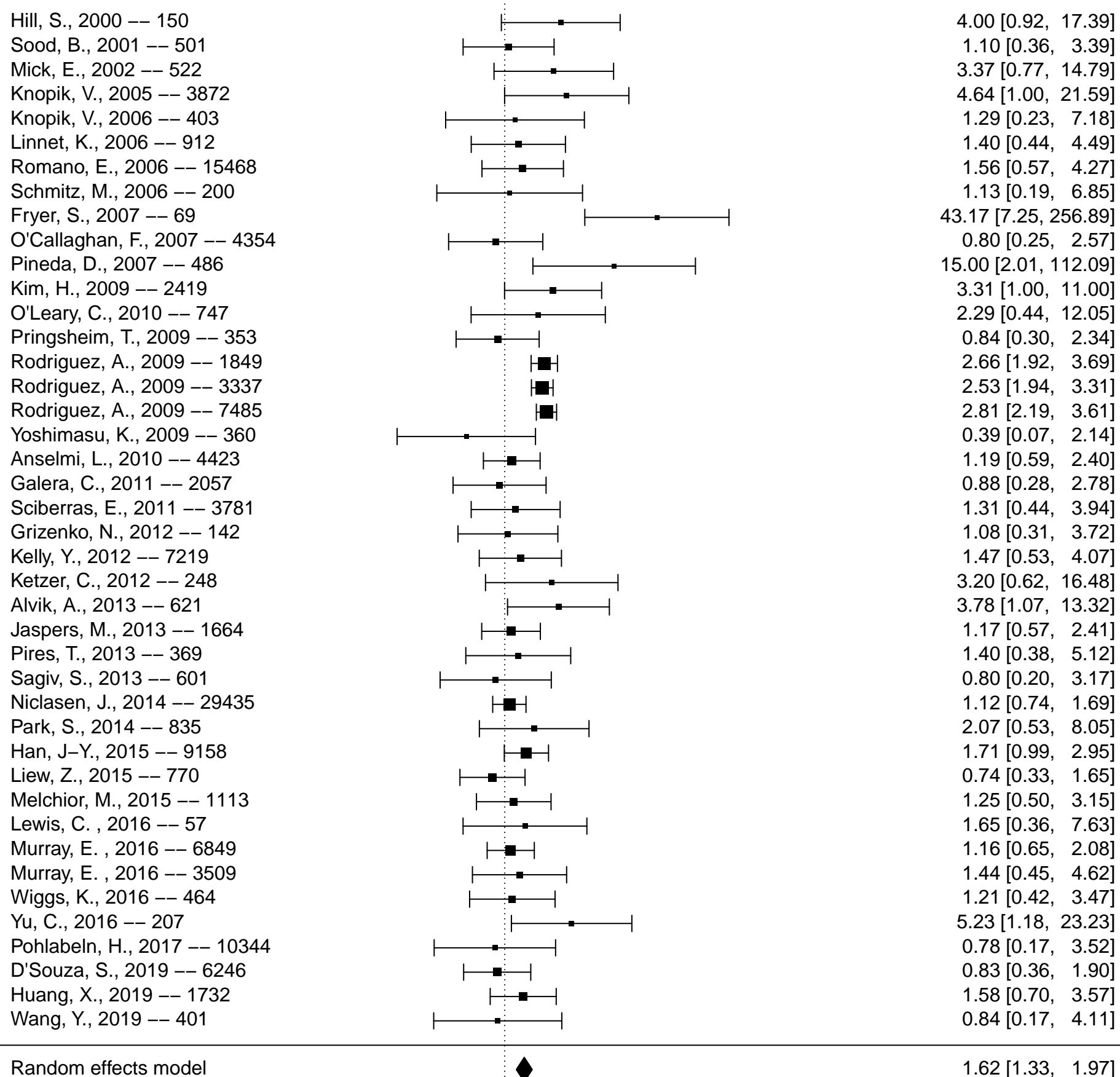


Figure S10. Forest plot of prenatal alcohol exposure and attention-deficit/hyperactivity disorder (ADHD) overall* based on studies reporting, dichotomous outcomes

Study, Year -- Sample size

Odds ratio [95% confidence interval]



0.02 0.14 1 7.39 54.6 403.43
Odds ratio

*Overall includes studies reporting on any included ADHD outcomes (diagnosis, ADHD symptoms, inattention, hyperactivity/impulsivity)

Figure S11. Forest plot of prenatal alcohol exposure and ADHD diagnosis only based on studies reporting dichotomous outcomes

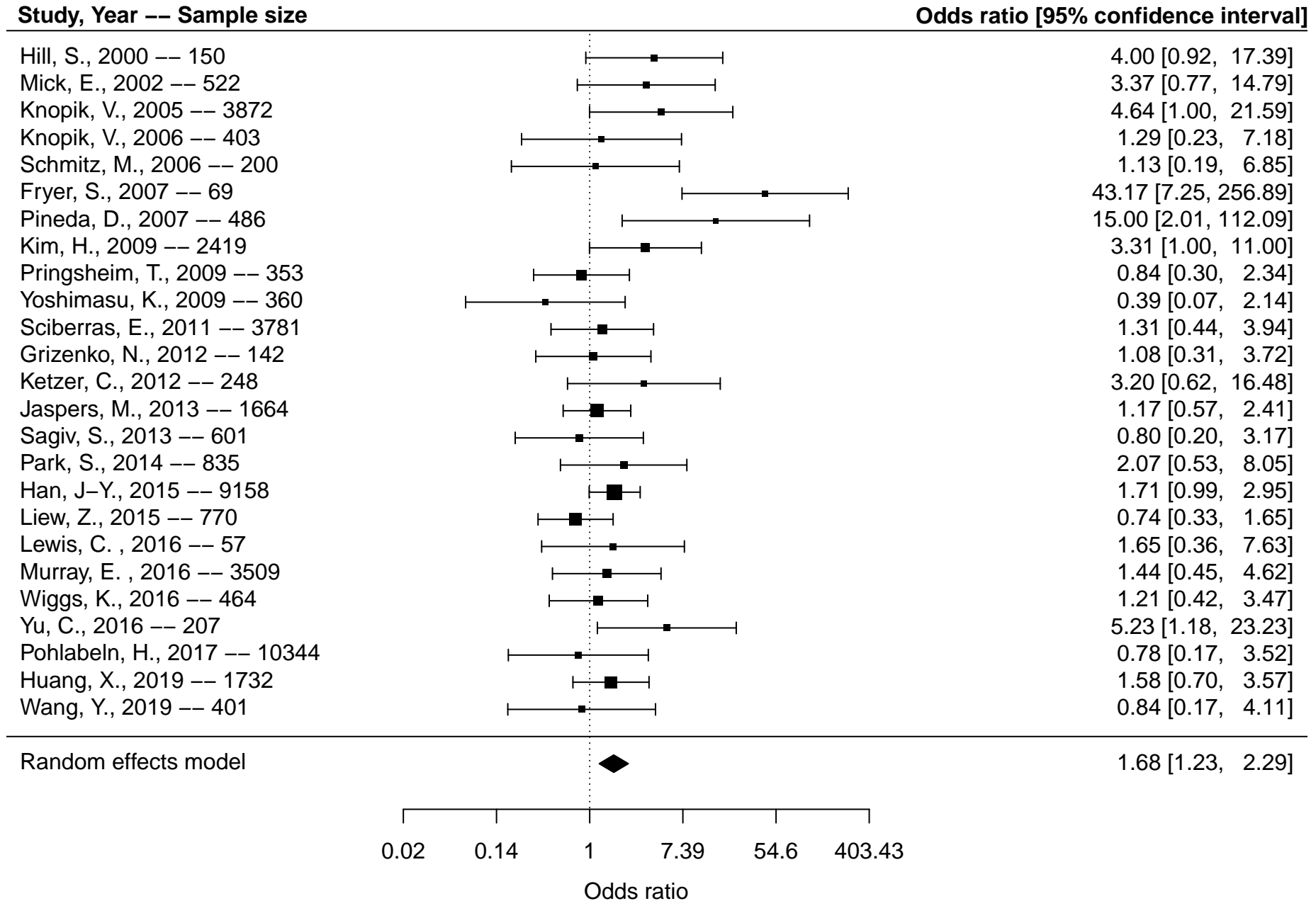


Figure S12. Forest plot of prenatal alcohol exposure and inattention based on studies reporting dichotomous outcomes

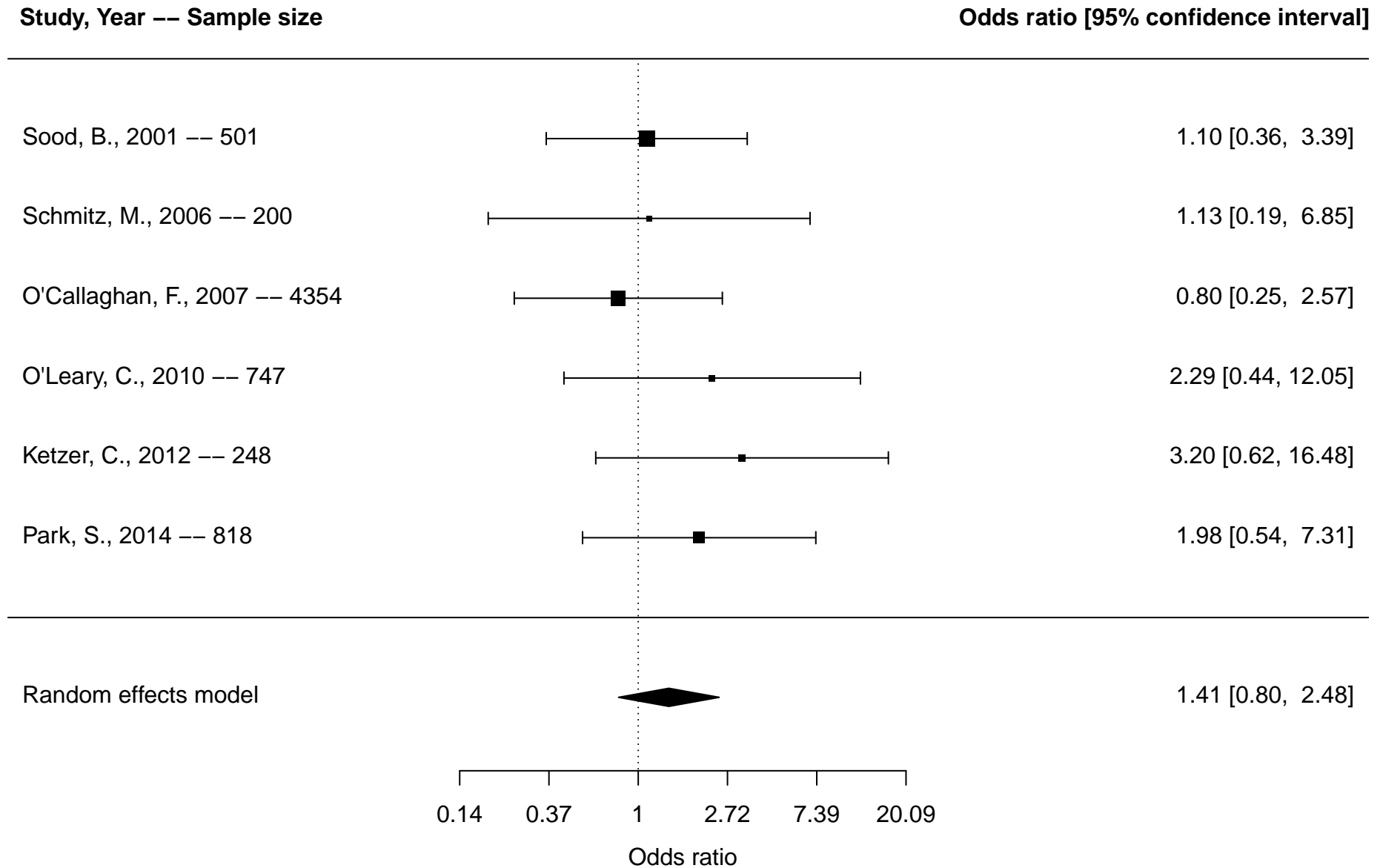


Figure S13. Forest plot of prenatal alcohol exposure and hyperactivity/impulsivity based on studies reporting dichotomous outcomes

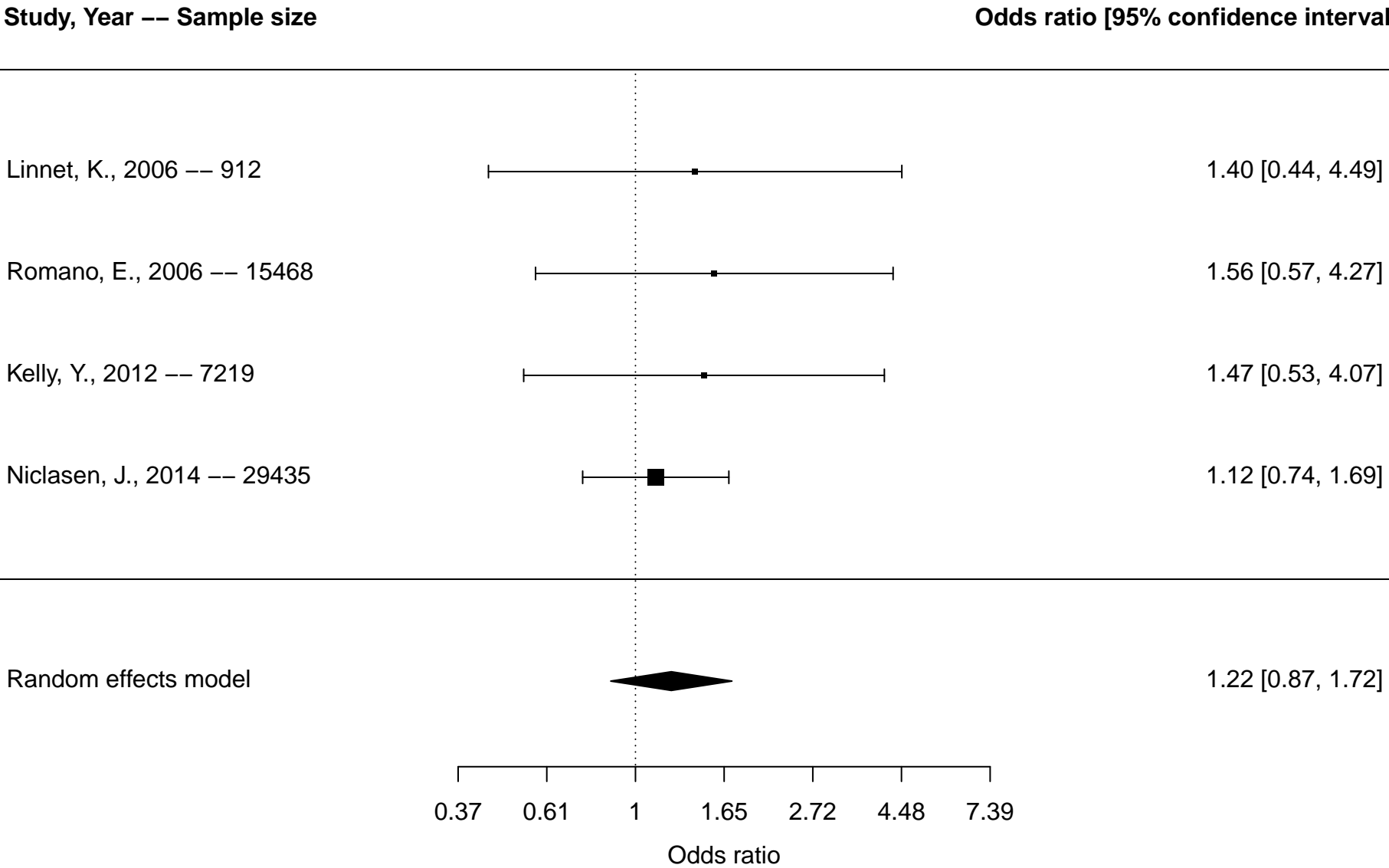
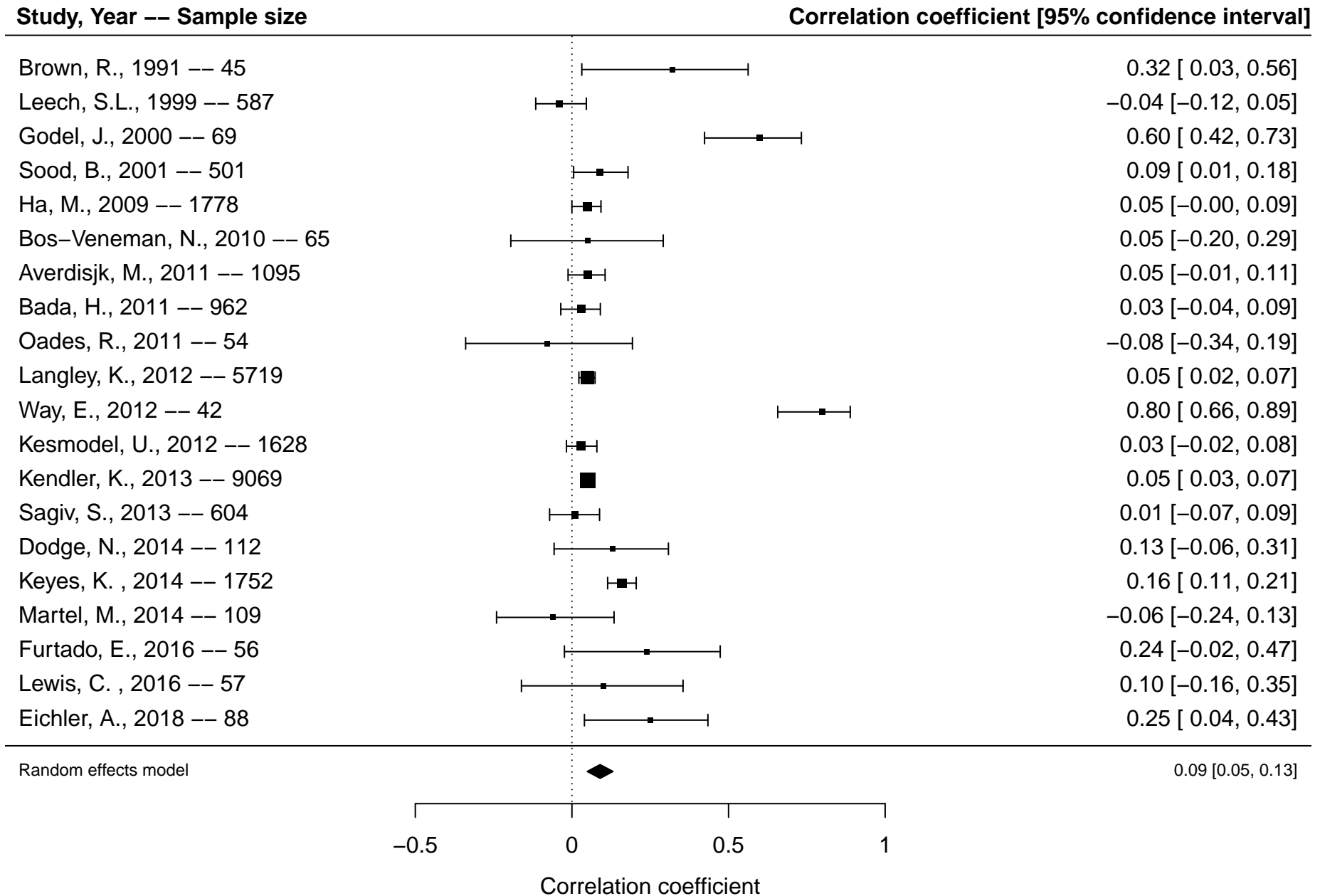


Figure S14. Forest plot of prenatal alcohol exposure and attention-deficit/hyperactivity disorder (ADHD) overall* based on studies reporting continuous outcomes



*Overall includes studies reporting on any included ADHD outcomes (diagnosis, ADHD symptoms, inattention, hyperactivity/impulsivity)

Figure S15. Forest plot of prenatal alcohol exposure and inattention based on studies reporting continuous outcomes

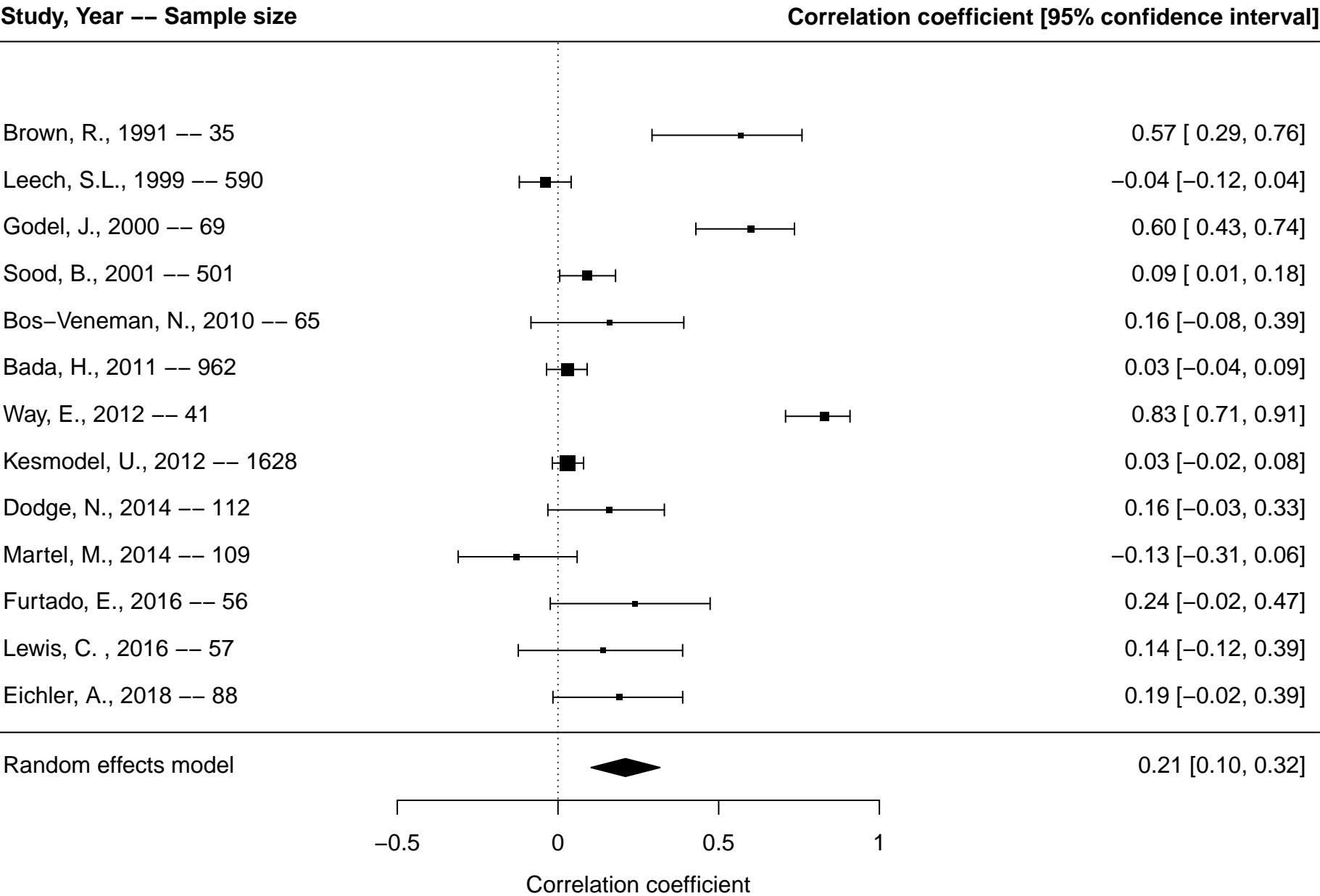


Figure S16. Forest plot of prenatal alcohol exposure and hyperactivity/impulsivity based on studies reporting continuous outcomes

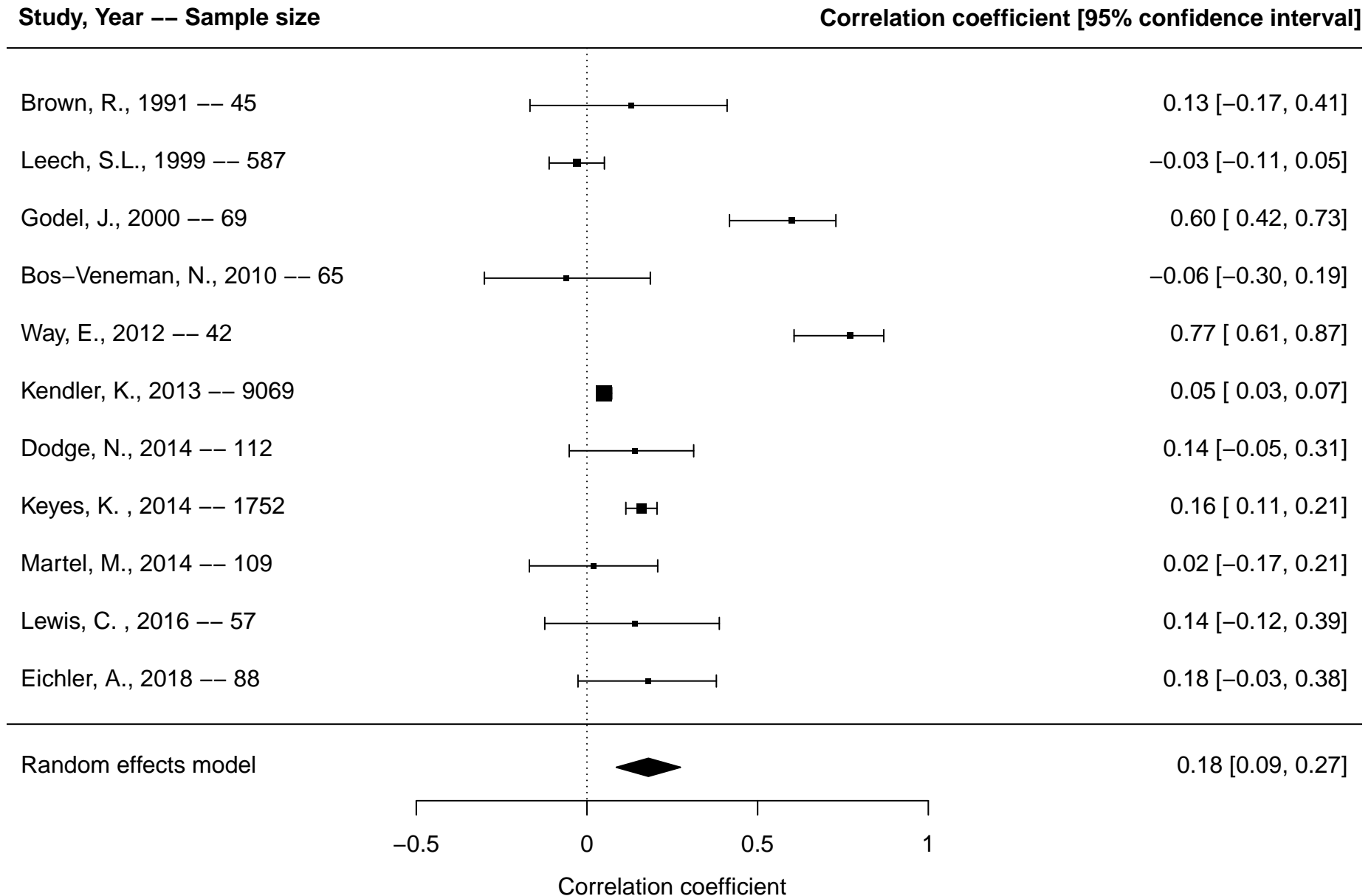
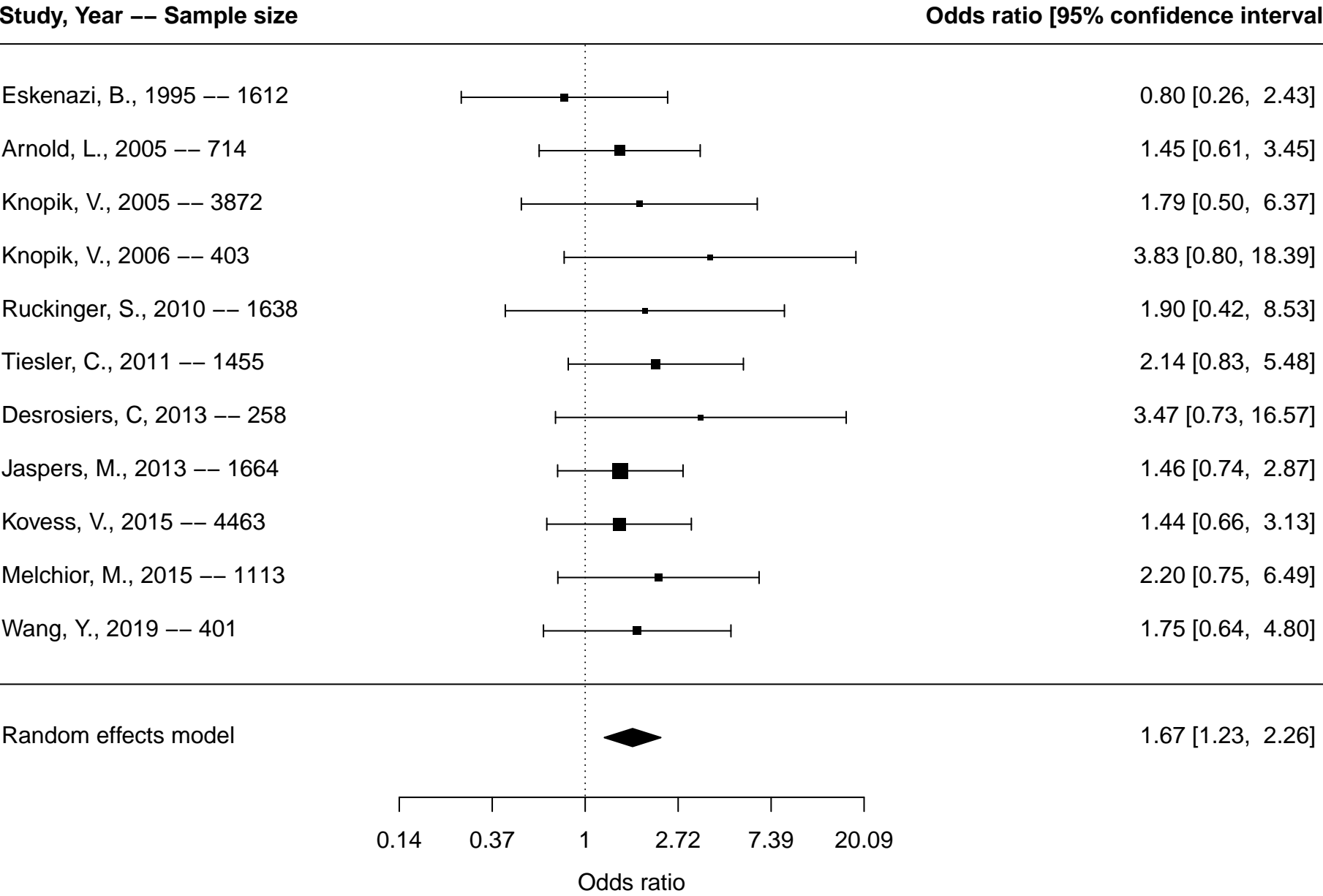


Figure S17. Forest plot of prenatal tobacco exposure and attention-deficit/hyperactivity disorder (ADHD) overall* based on studies reporting dichotomous outcomes



*Overall includes studies reporting on any included ADHD outcomes (diagnosis, ADHD symptoms, inattention, hyperactivity/impulsivity)

Figure S18. Forest plot of prenatal tobacco exposure and ADHD diagnosis only based on studies reporting dichotomous outcomes

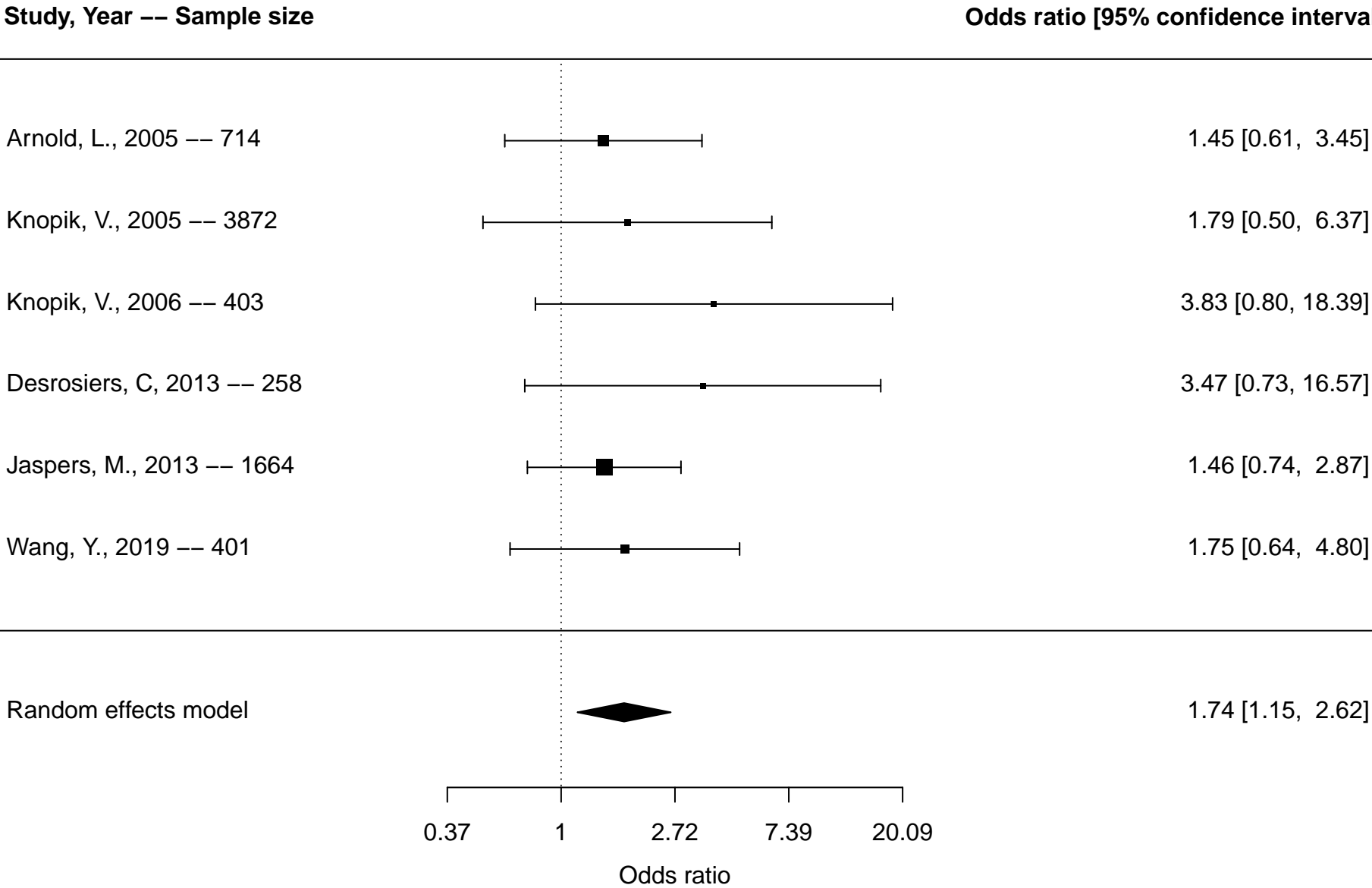
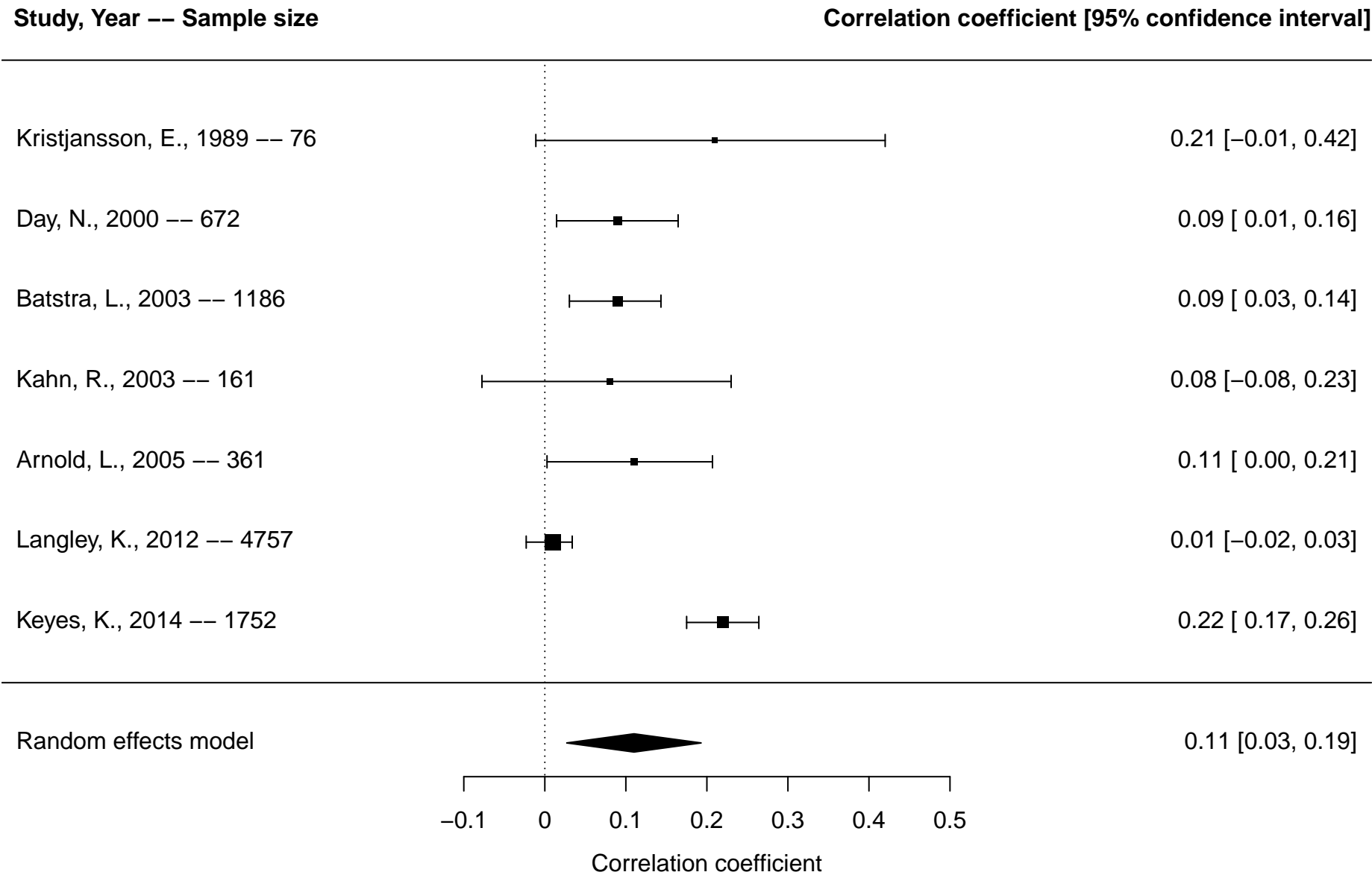


Figure S19. Forest plot of prenatal tobacco exposure and attention-deficit/hyperactivity disorder (ADHD) overall* based on studies reporting continuous outcomes



*Overall includes studies reporting on any included ADHD outcomes (diagnosis, ADHD symptoms, inattention, hyperactivity/impulsivity)

Figure S20. Forest plot of prenatal tobacco exposure and hyperactivity/impulsivity based on studies reporting continuous outcomes

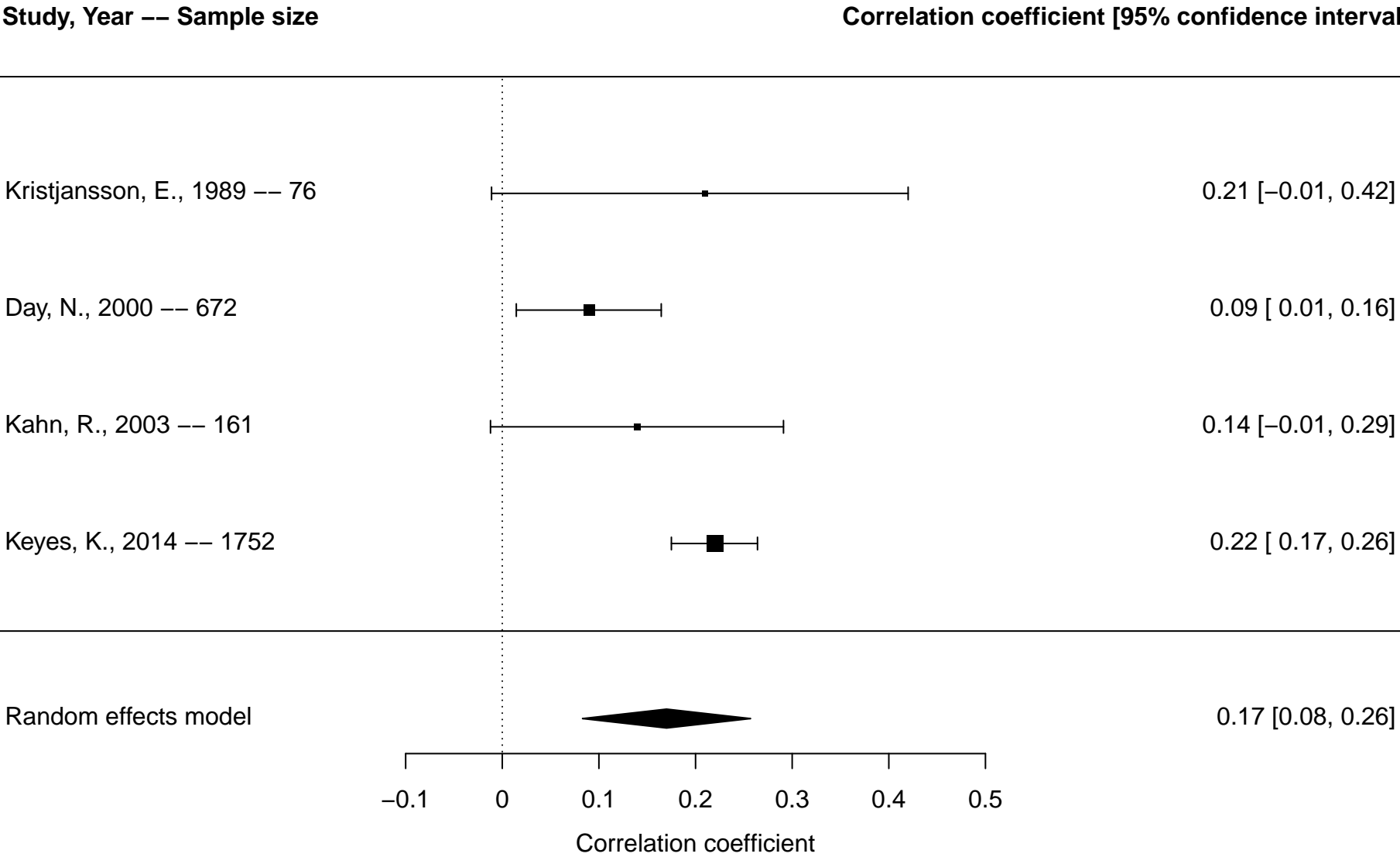
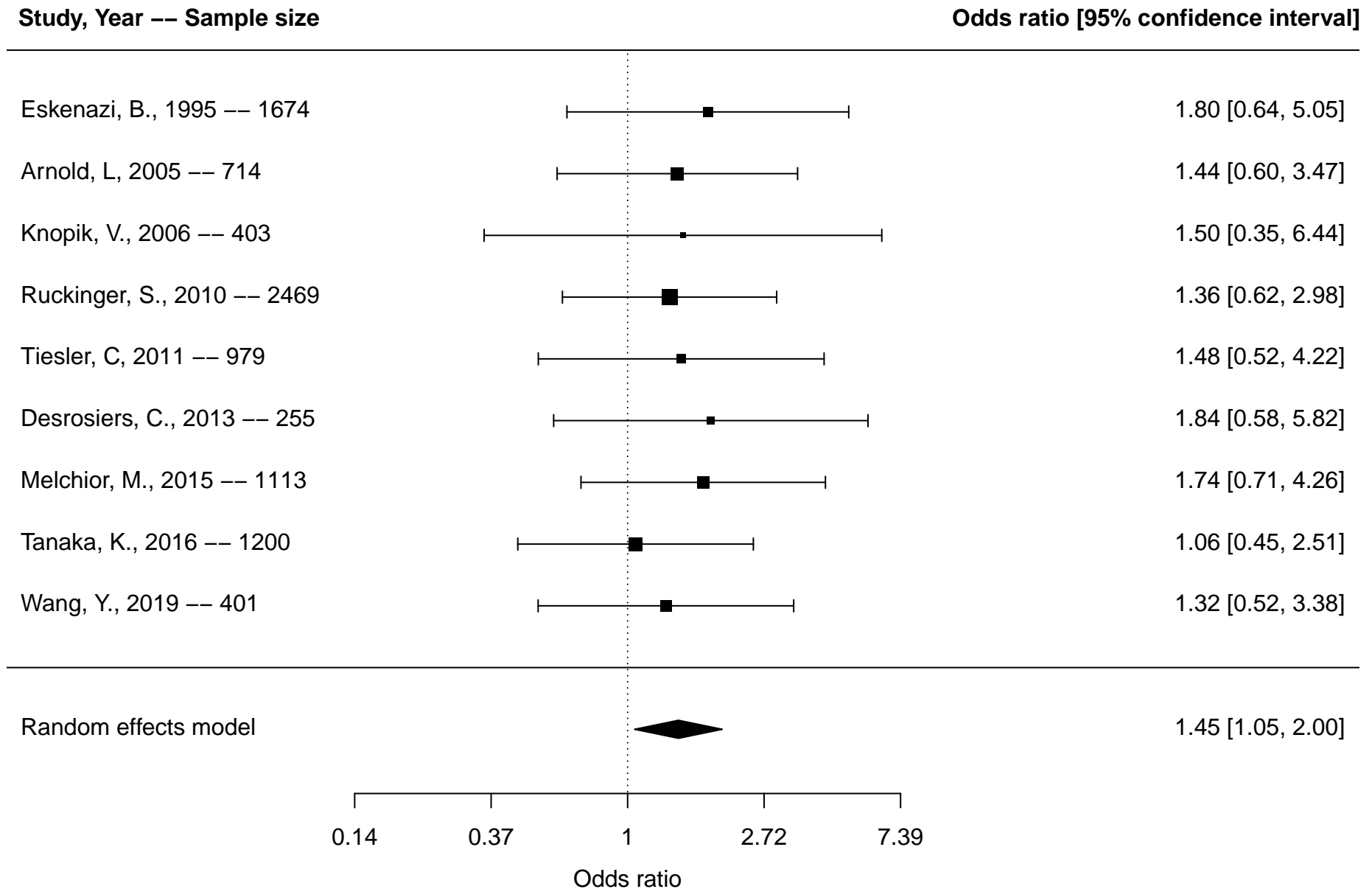


Figure S21. Forest plot of postnatal tobacco exposure and attention-deficit/hyperactivity disorder (ADHD) overall* based on studies reporting dichotomous outcomes



*Overall includes studies reporting on any included ADHD outcomes (diagnosis, ADHD symptoms, inattention, hyperactivity/impulsivity)

Figure S22. Forest plot of postnatal tobacco exposure and ADHD diagnosis only based on studies reporting dichotomous outcomes

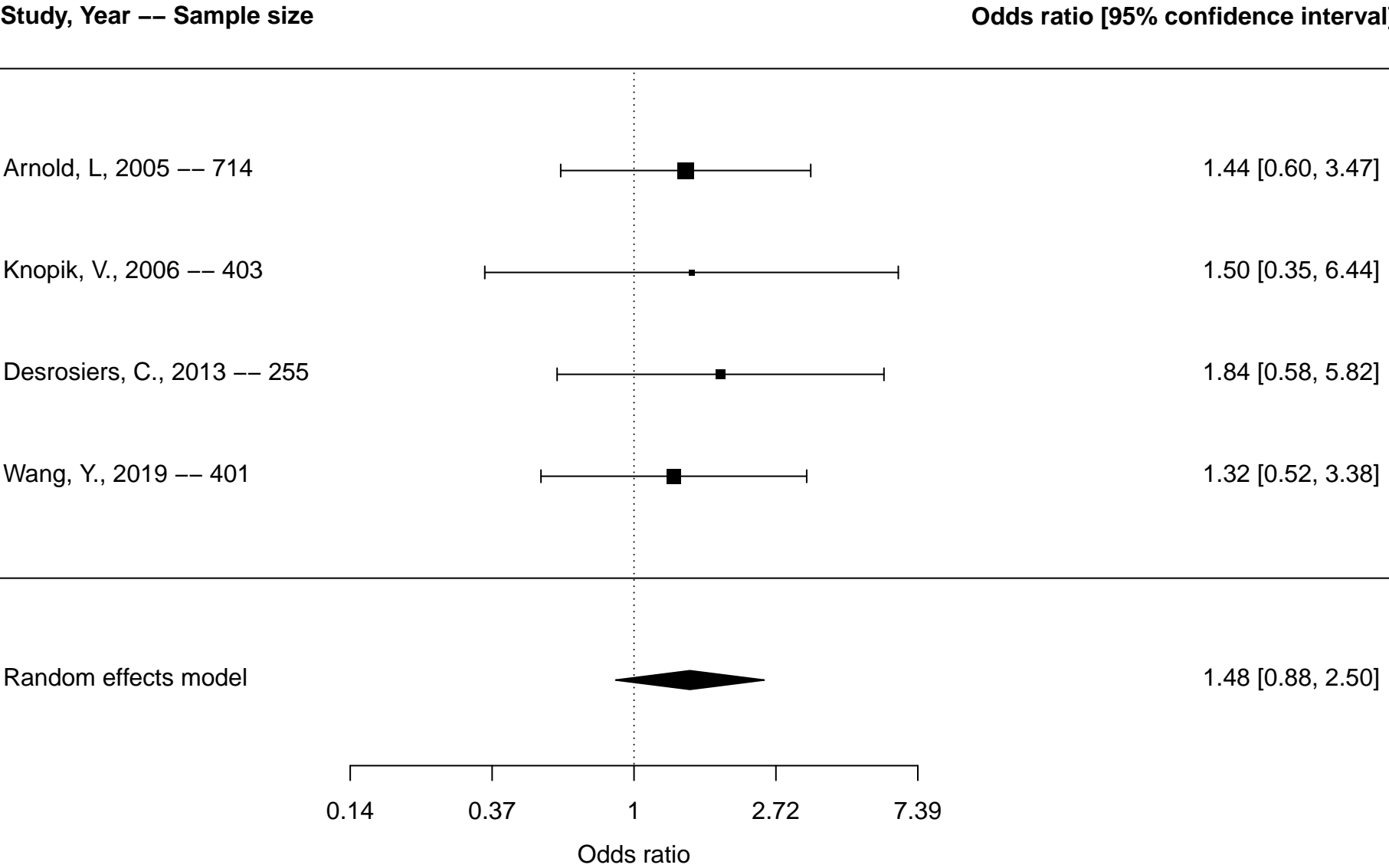
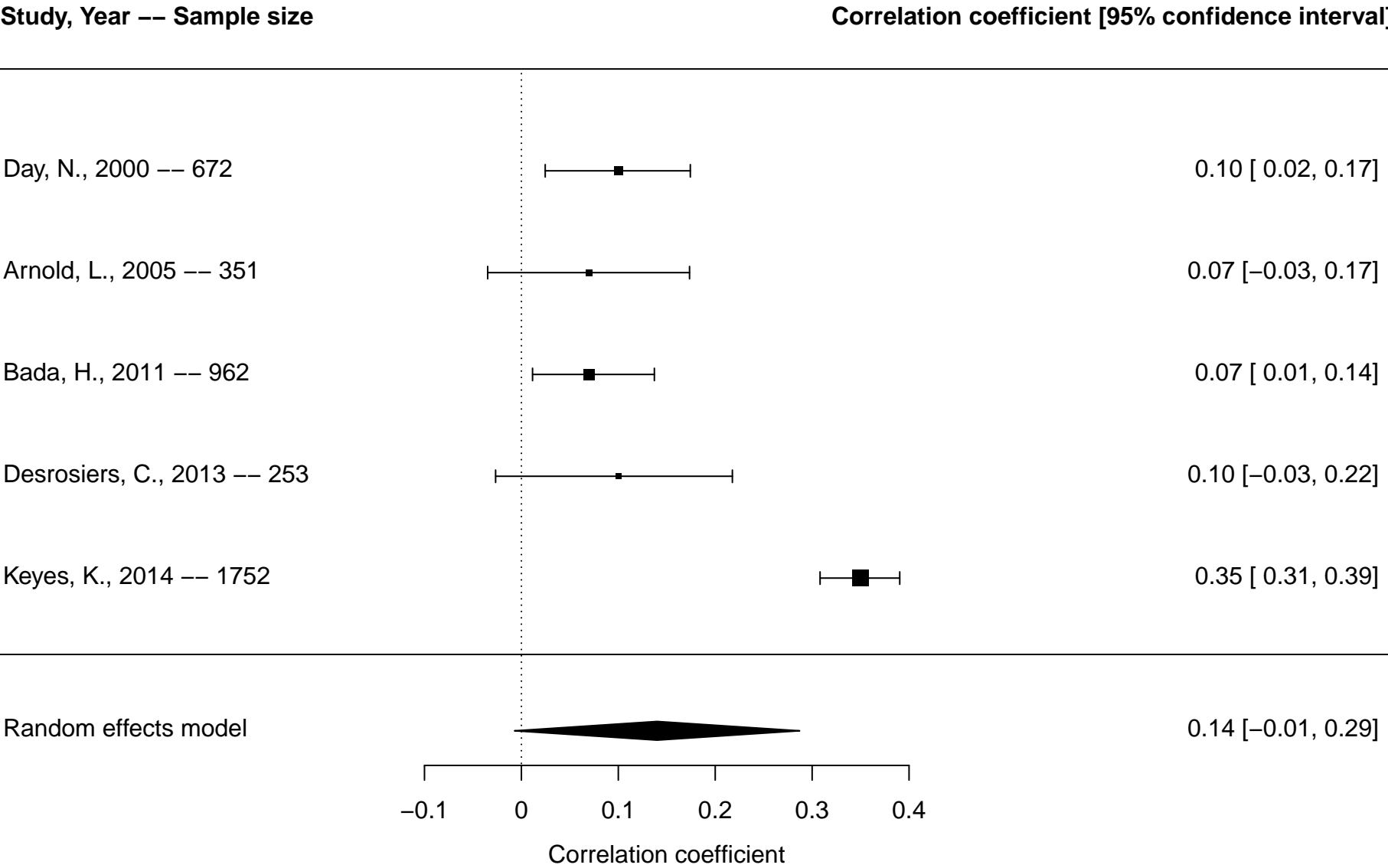


Figure S23. Forest plot of postnatal tobacco exposure and attention-deficit/hyperactivity disorder (ADHD) overall* based on studies reporting continuous outcomes



*Overall includes studies reporting on any included ADHD outcomes (diagnosis, ADHD symptoms, inattention, hyperactivity/impulsivity)

Figure S24. Forest plot of postnatal tobacco exposure and inattention based on studies reporting continuous outcomes

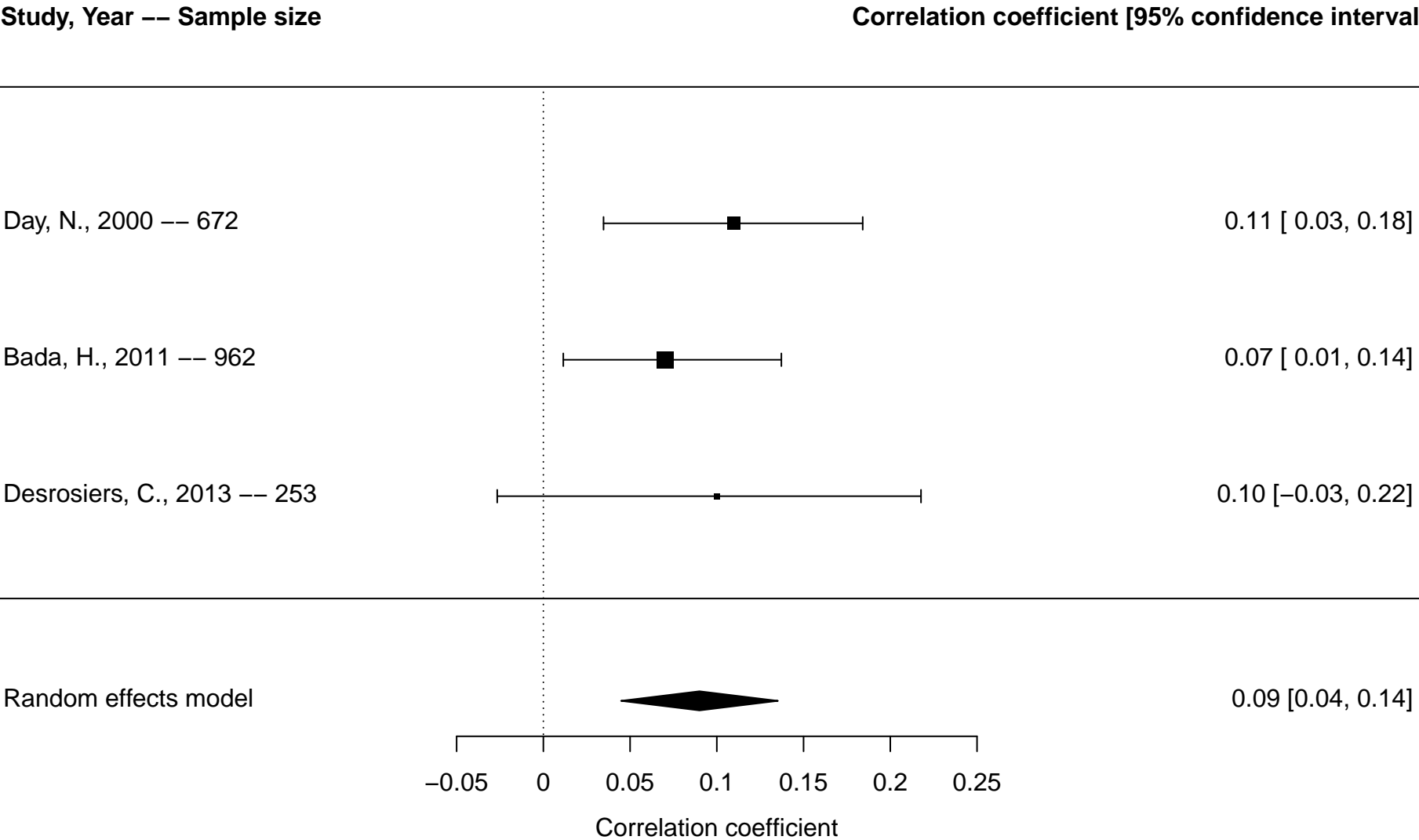
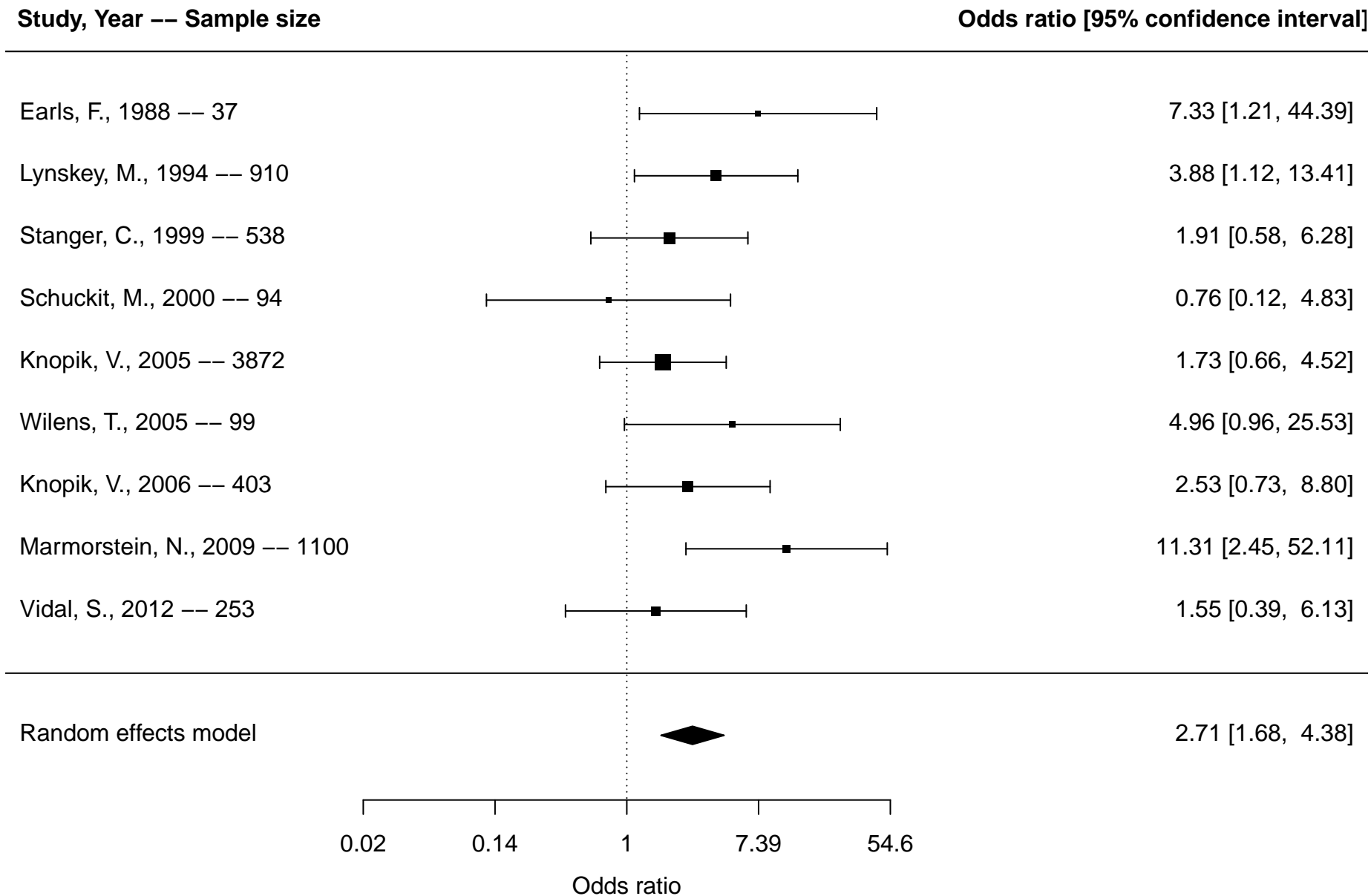


Figure S25. Forest plot of parental substance use disorders and attention-deficit/hyperactivity disorder (ADHD) overall* based on studies reporting dichotomous outcomes



*Overall includes studies reporting on any included ADHD outcomes (diagnosis, ADHD symptoms, inattention, hyperactivity/impulsivity)

Figure S26. Forest plot of parental substance use disorders and ADHD diagnosis only based on studies reporting dichotomous outcomes

